

This blank area falls outside the coverage of the relevant aerial photograph
有關鳥瞰照片並不覆蓋本空白範圍

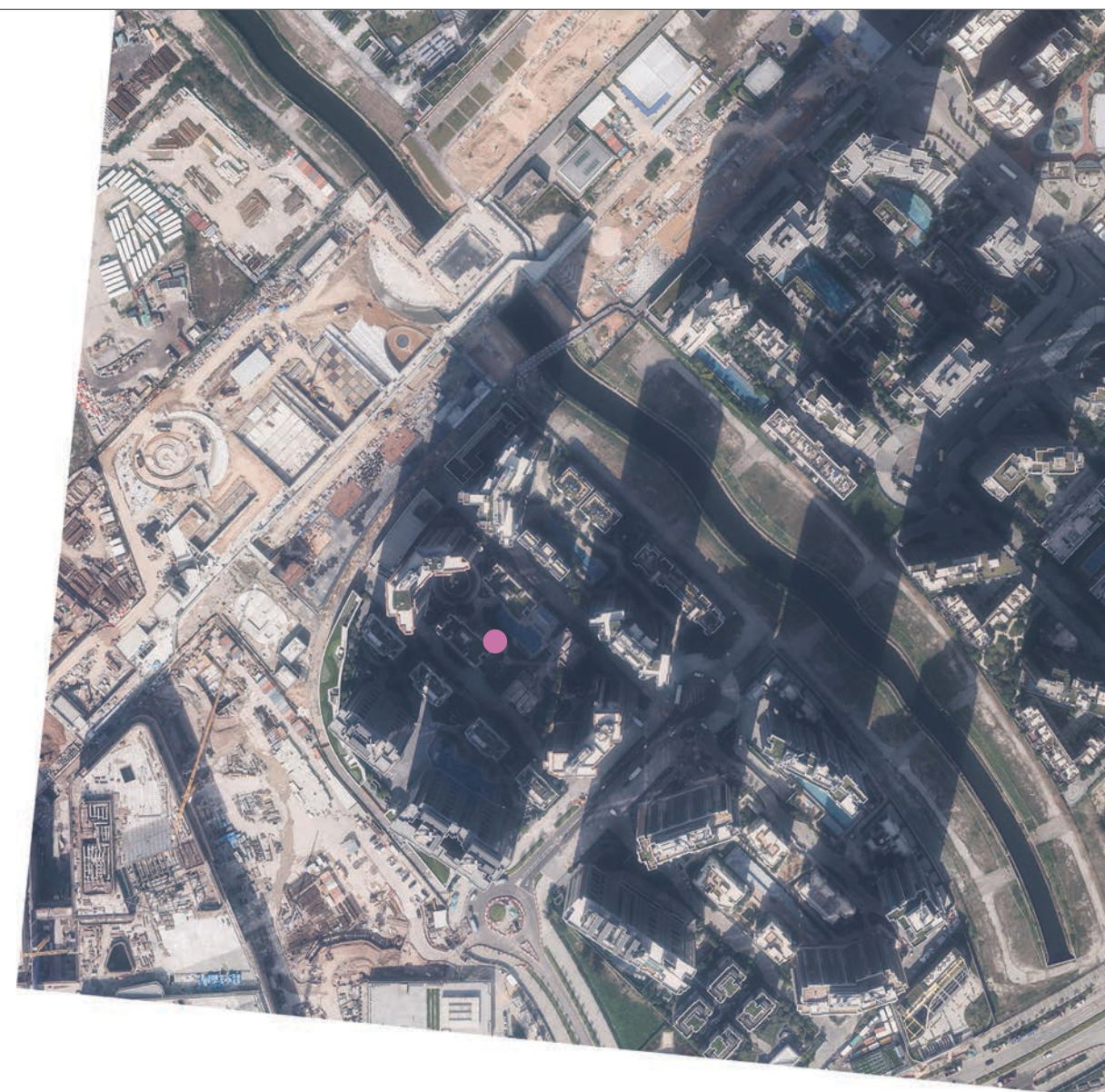
● Location of the Development
發展項目的位置

Adopted from part of the Aerial Photograph taken by the Survey and Mapping Office of Lands Department at a flying height of 6,900 feet, photo No. E167052C dated 8 December 2022.

摘錄自地政總署測繪處於2022年12月8日在6,900呎飛行高度拍攝之鳥瞰照片，照片編號E167052C。

Notes:

1. The copies of the Aerial Photographs of the Development are available for free inspection at the sales office during opening hours.
2. Due to technical reasons, the Aerial Photographs have shown more than the area required under the Residential Properties (First-hand Sales) Ordinance.
3. Survey and Mapping Office, Lands Department, The Government of HKSAR © Copyright reserved - reproduction by permission only.



This blank area falls outside the coverage of the relevant aerial photograph
有關鳥瞰照片並不覆蓋本空白範圍

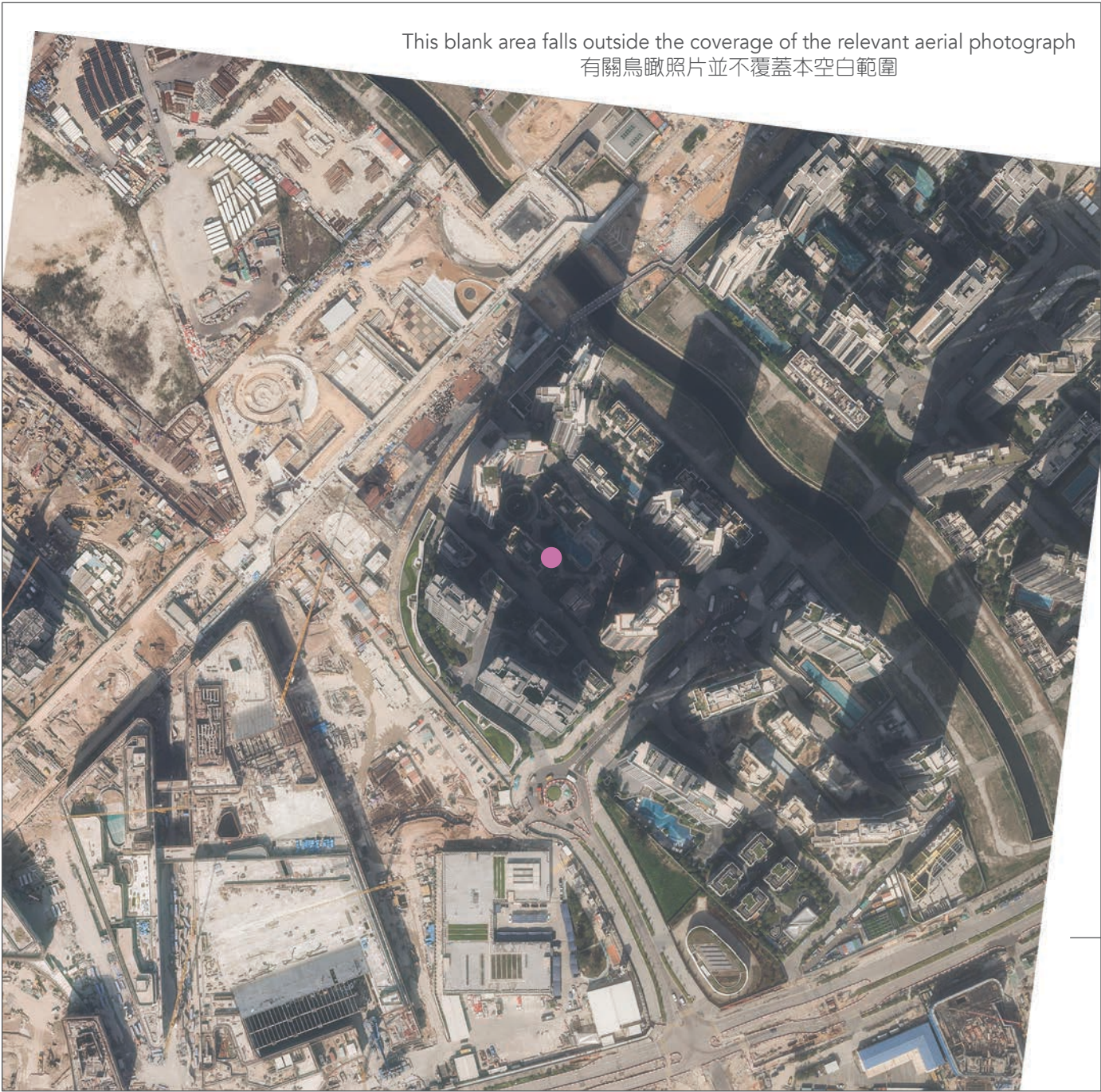
● Location of the Development
發展項目的位置

Adopted from part of the Aerial Photograph taken by the Survey and Mapping Office of Lands Department at a flying height of 6,900 feet, photo No. E167051C dated 8 December 2022.

摘錄自地政總署測繪處於2022年12月8日在6,900呎飛行高度拍攝之鳥瞰照片，照片編號E167051C。

註：

1. 發展項目的鳥瞰照片之副本可於售樓處開放時間內免費查閱。
2. 因技術原因，鳥瞰照片所顯示之範圍多於《一手住宅物業銷售條例》所要求者。
3. 香港特別行政區政府地政總署測繪處版權所有，未經許可，不得複製。



This blank area falls outside the coverage of the relevant aerial photograph
有關鳥瞰照片並不覆蓋本空白範圍

This blank area falls outside the coverage of the relevant aerial photograph
有關鳥瞰照片並不覆蓋本空白範圍

● Location of the Development
發展項目的位置

Adopted from part of the Aerial Photograph taken by the Survey and Mapping Office of Lands Department at a flying height of 6,900 feet, photo No. E167196C dated 8 December 2022.
摘錄自地政總署測繪處於2022年12月8日在6,900呎飛行高度拍攝之鳥瞰照片，照片編號E167196C。

Notes:

1. The copy of the Aerial Photograph of the Development is available for free inspection at the sales office during opening hours.
2. Due to technical reasons, the Aerial Photograph has shown more than the area required under the Residential Properties (First-hand Sales) Ordinance.
3. Survey and Mapping Office, Lands Department, The Government of HKSAR © Copyright reserved - reproduction by permission only.

註：

1. 發展項目的鳥瞰照片之副本可於售樓處開放時間內免費查閱。
2. 因技術原因，鳥瞰照片所顯示之範圍多於《一手住宅物業銷售條例》所要求者。
3. 香港特別行政區政府地政總署測繪處版權所有，未經許可，不得複製。



This blank area falls outside the coverage of the relevant aerial photograph
有關鳥瞰照片並不覆蓋本空白範圍

This blank area falls outside the coverage of the relevant aerial photograph
有關鳥瞰照片並不覆蓋本空白範圍

● Location of the Development
發展項目的位置

Adopted from part of the Aerial Photograph taken by the Survey and Mapping Office of Lands Department at a flying height of 6,900 feet, photo No. E167195C dated 8 December 2022.

摘錄自地政總署測繪處於2022年12月8日在6,900呎飛行高度拍攝之鳥瞰照片，照片編號E167195C。

Notes:

1. The copy of the Aerial Photograph of the Development is available for free inspection at the sales office during opening hours.
2. Due to technical reasons, the Aerial Photograph has shown more than the area required under the Residential Properties (First-hand Sales) Ordinance.
3. Survey and Mapping Office, Lands Department, The Government of HKSAR © Copyright reserved - reproduction by permission only.

註：

1. 發展項目的鳥瞰照片之副本可於售樓處開放時間內免費查閱。
2. 因技術原因，鳥瞰照片所顯示之範圍多於《一手住宅物業銷售條例》所要求者。
3. 香港特別行政區政府地政總署測繪處版權所有，未經許可，不得複製。