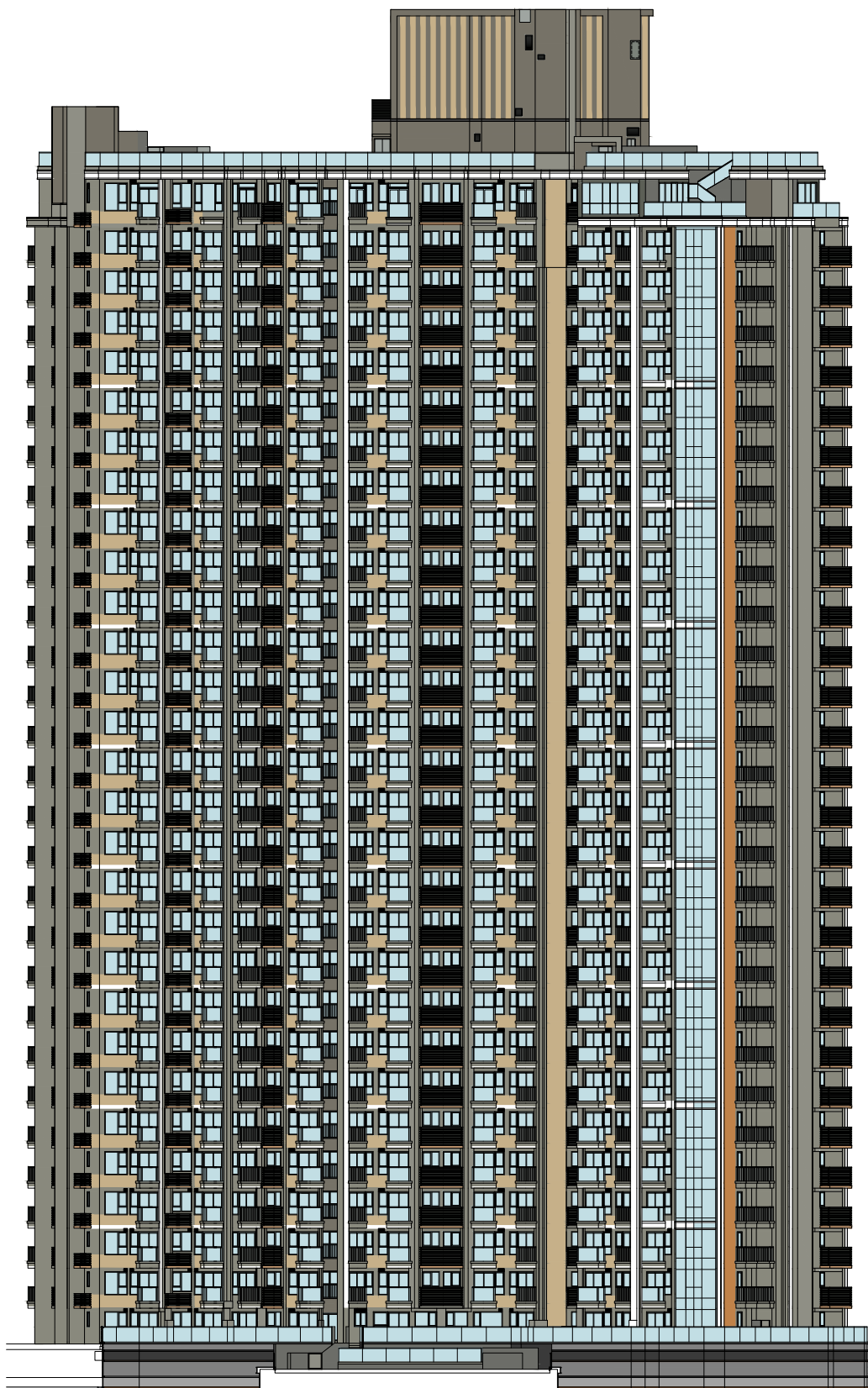


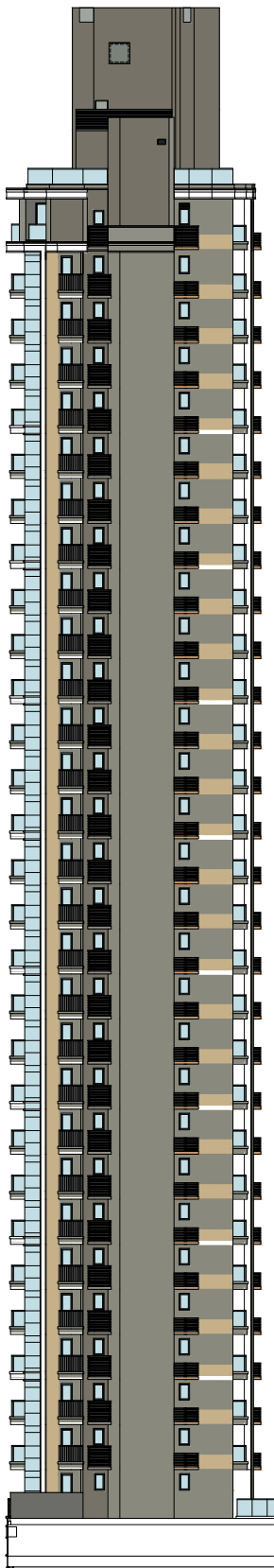
ELEVATION PLAN 立面圖

ARRESO TOWER 1 (1A&1B)
ARRESO第1座 (1A及1B)

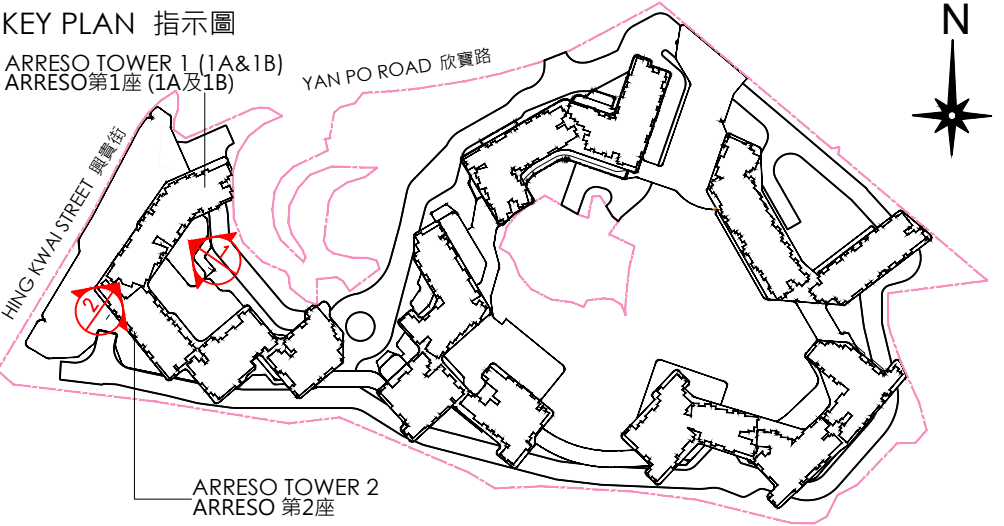


ELEVATION PLAN 1 立面圖 1

ARRESO TOWER 1 (1A&1B)
ARRESO第1座 (1A及1B)



ELEVATION PLAN 2 立面圖 2



Boundary of the Development
發展項目的界線

Authorized Person for the Phase
certified that the elevations shown on
this plan:

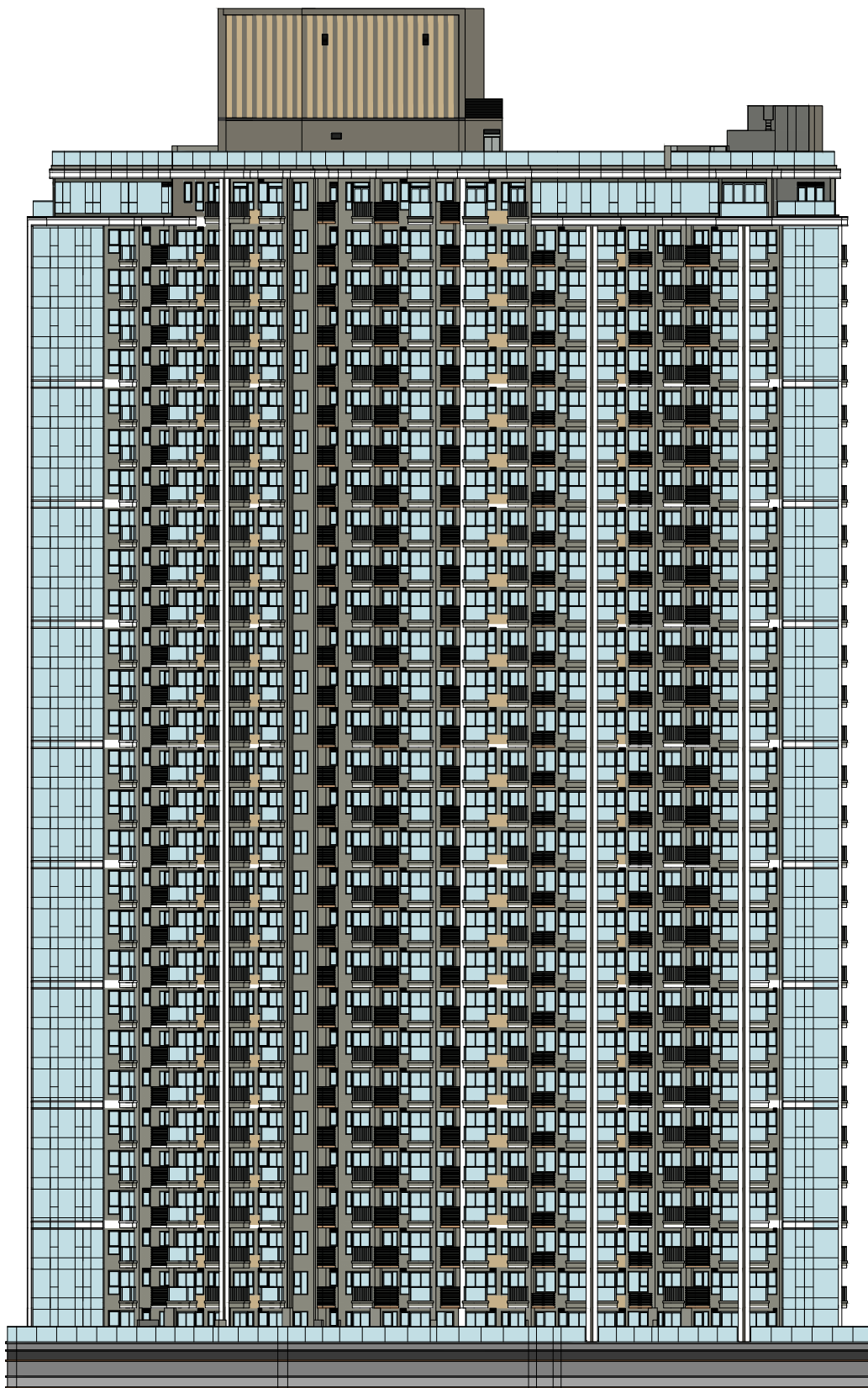
- a. are prepared on the basis of the
approved building plans for the
Phase as of 10 July 2023 and
7 December 2023 ; and
- b. are in general accordance with
the outward appearance of the
Phase.

期數的認可人士證明本圖顯示的立面:

- a. 以2023年7月10日及2023年12月7日
的情況為準的期數的經批准的建築圖
則為基礎擬備;及
- b. 大致上與期數的外觀一致。

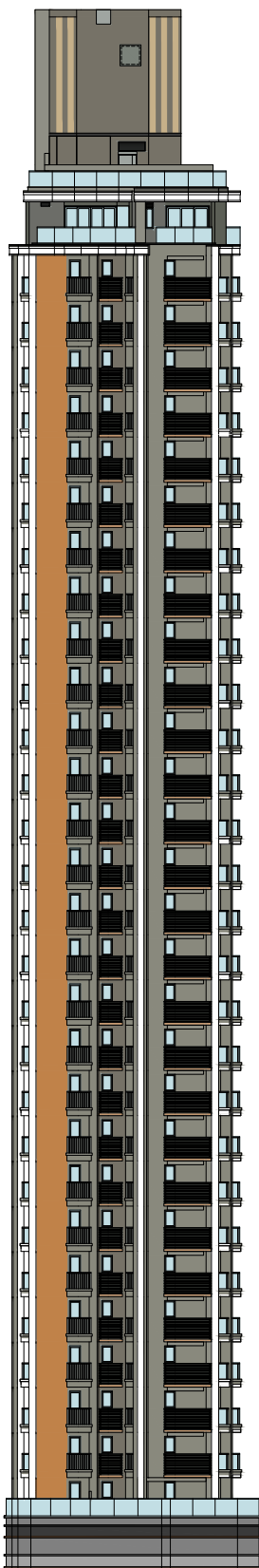
ELEVATION PLAN 立面圖

ARRESO TOWER 1 (1A&1B)
ARRESO第1座 (1A及1B)

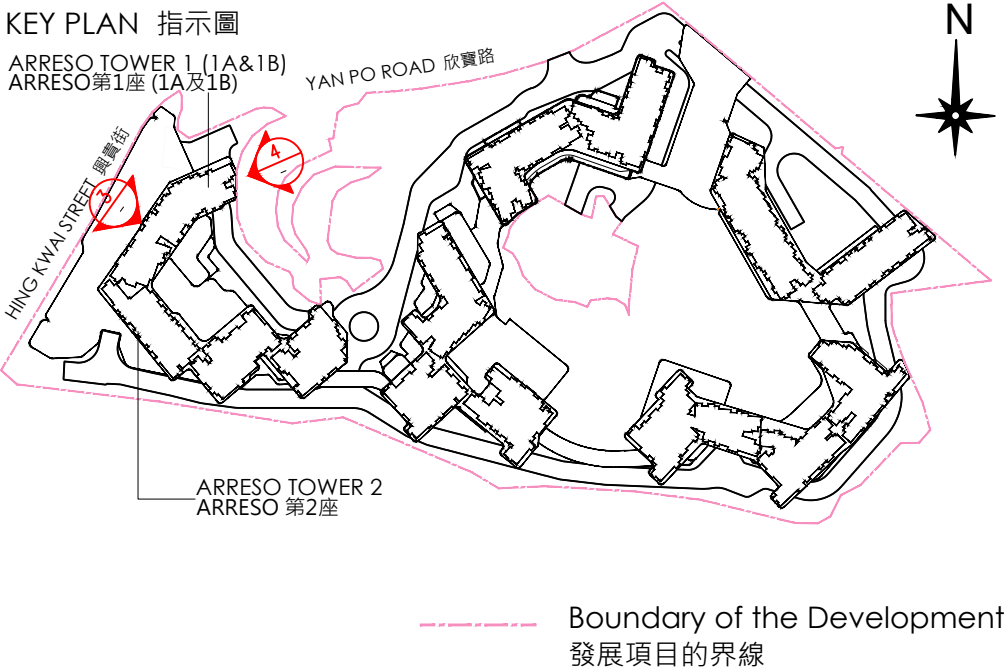


ELEVATION PLAN 3 立面圖 3

ARRESO TOWER 1 (1A&1B)
ARRESO第1座 (1A及1B)



ELEVATION PLAN 4 立面圖 4



Authorized Person for the Phase
certified that the elevations shown on
this plan:

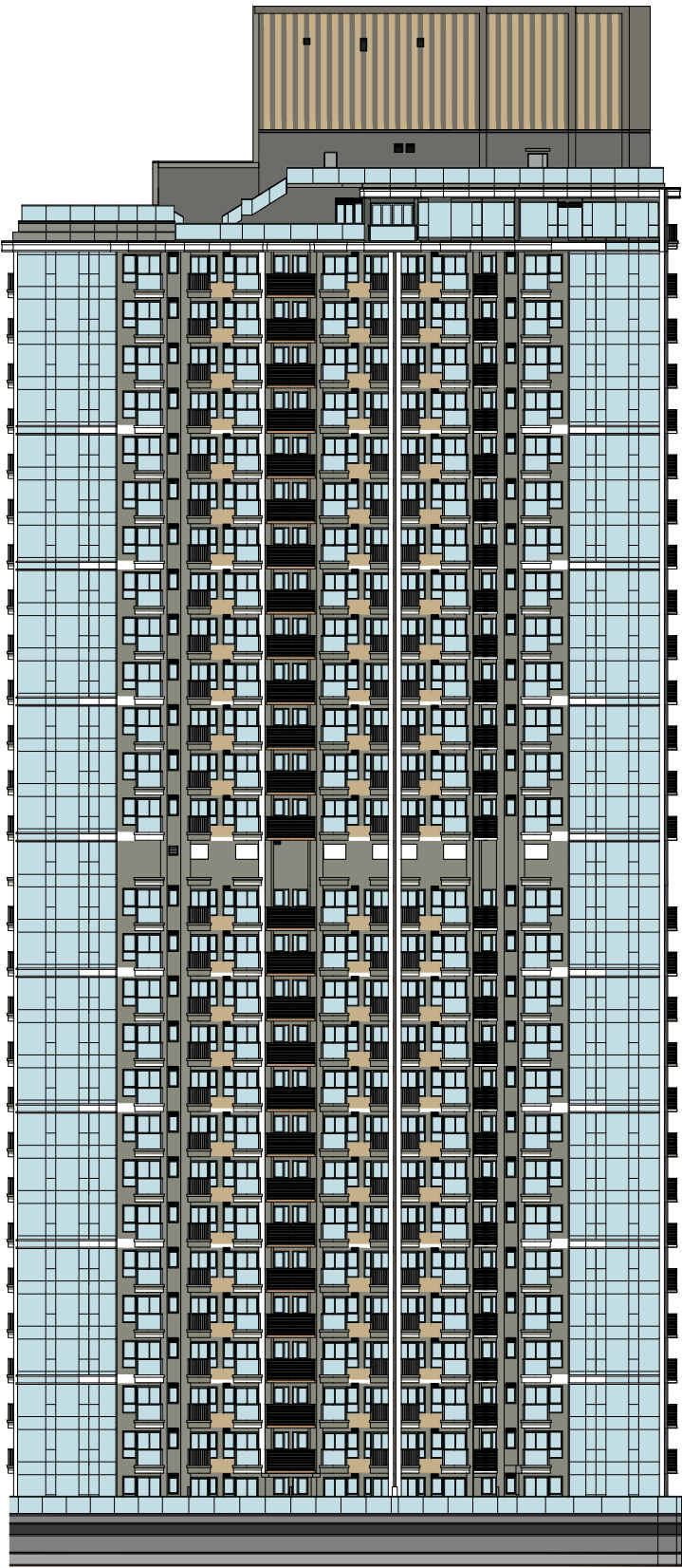
- a. are prepared on the basis of the
approved building plans for the
Phase as of 10 July 2023 and
7 December 2023 ; and
- b. are in general accordance with
the outward appearance of the
Phase.

期數的認可人士證明本圖顯示的立面:

- a. 以2023年7月10日及2023年12月7日
的情況為準的期數的經批准的建築圖
則為基礎擬備;及
- b. 大致上與期數的外觀一致。

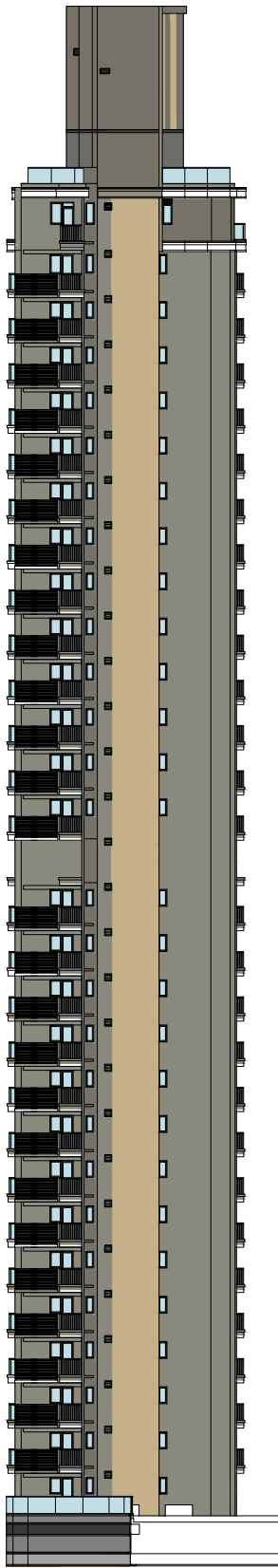
ELEVATION PLAN 立面圖

ARRESO TOWER 2
ARRESO 第2座



ELEVATION PLAN 1 立面圖 1

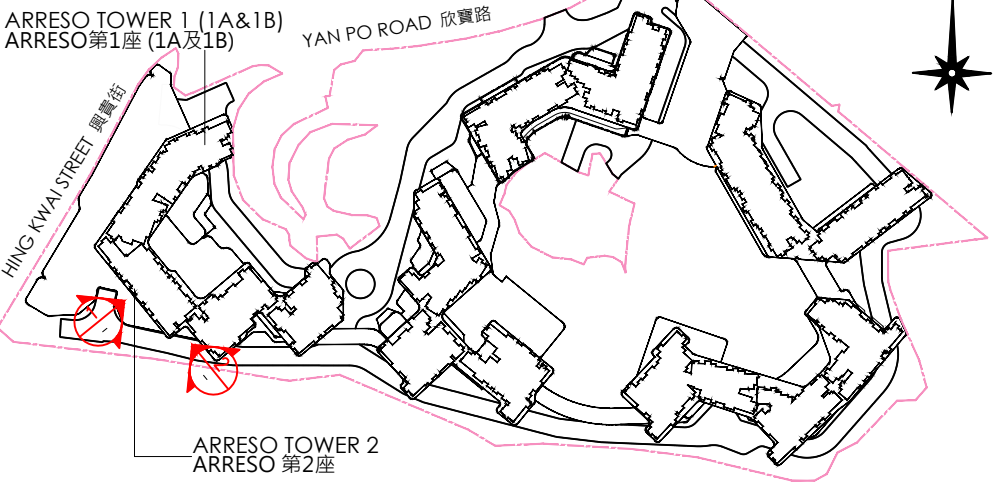
ARRESO TOWER 2
ARRESO 第2座



ELEVATION PLAN 2 立面圖 2

KEY PLAN 指示圖

ARRESO TOWER 1 (1A&1B)
ARRESO第1座 (1A及1B)



----- Boundary of the Development
發展項目的界線

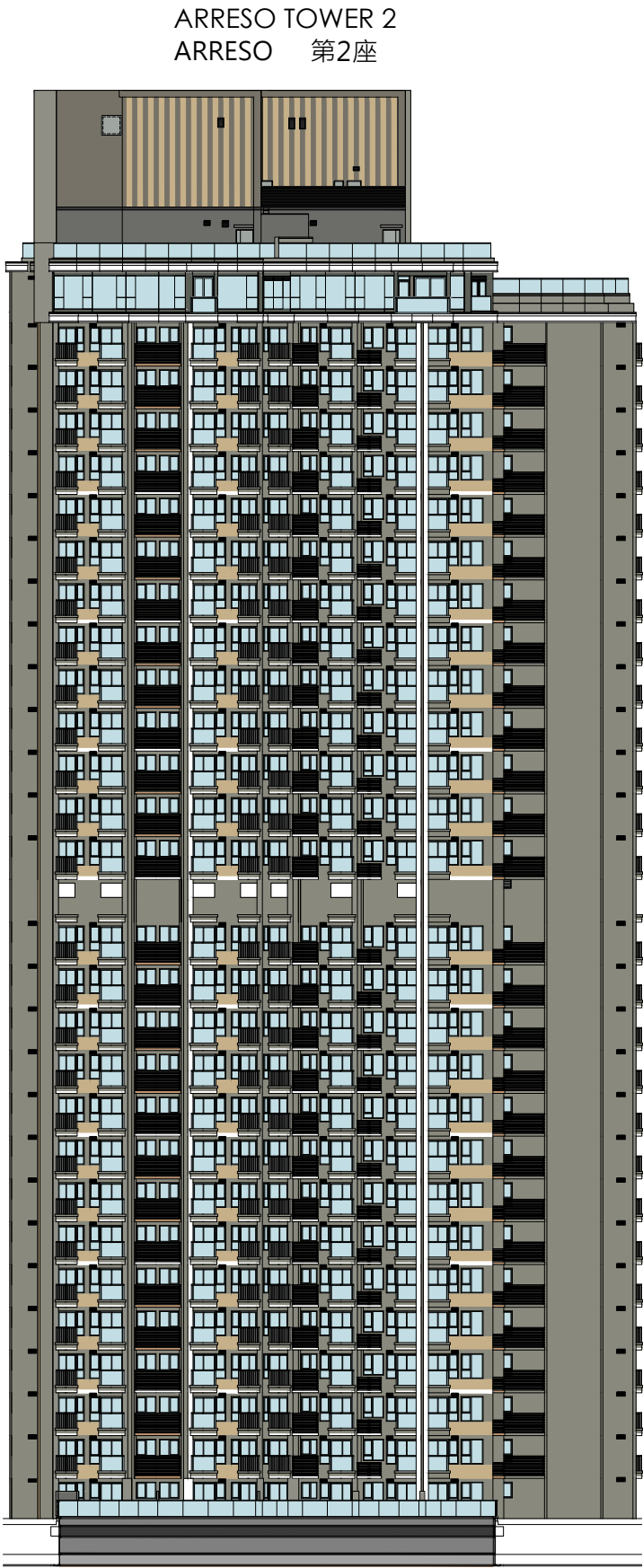
Authorized Person for the Phase
certified that the elevations shown on
this plan:

- a. are prepared on the basis of the
approved building plans for the
Phase as of 10 July 2023 and
7 December 2023 ; and
- b. are in general accordance with
the outward appearance of the
Phase.

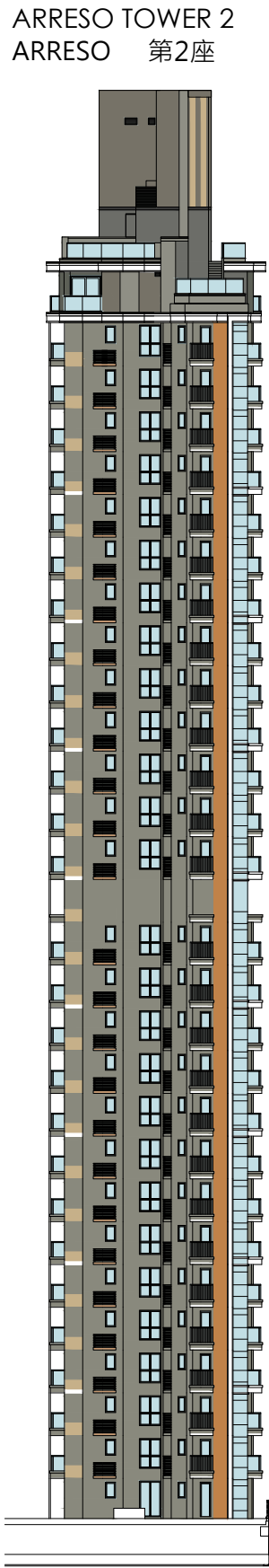
期數的認可人士證明本圖顯示的立面:

- a. 以2023年7月10日及2023年12月7日
的情況為準的期數的經批准的建築圖
則為基礎擬備;及
- b. 大致上與期數的外觀一致。

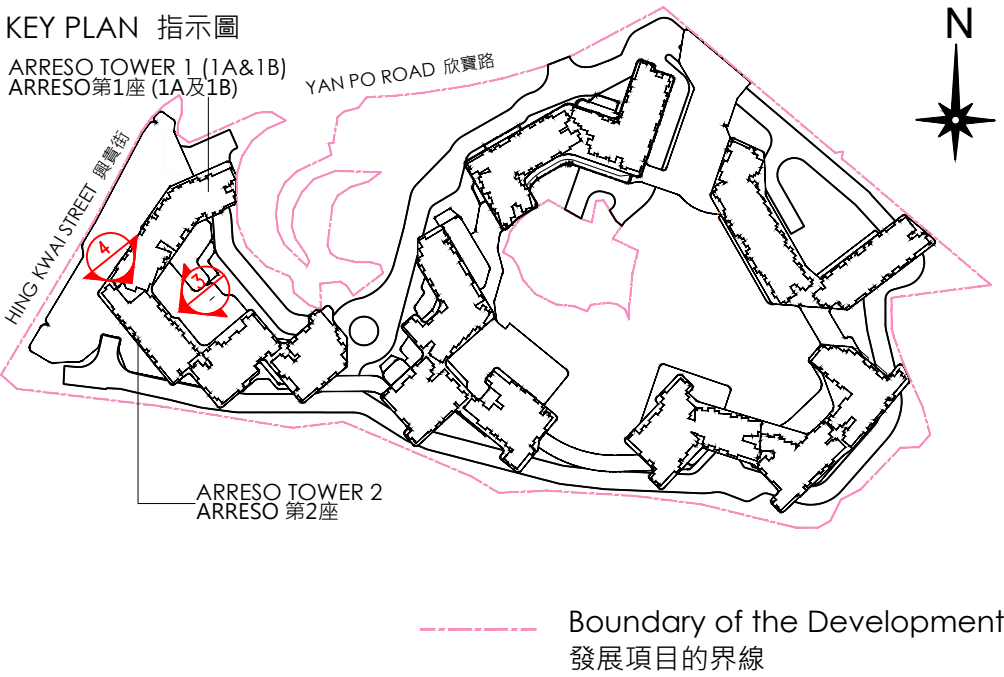
ELEVATION PLAN 立面圖



ELEVATION PLAN 3 立面圖 3



ELEVATION PLAN 4 立面圖 4



Authorized Person for the Phase
certified that the elevations shown on
this plan:

- a. are prepared on the basis of the
approved building plans for the
Phase as of 10 July 2023 and
7 December 2023 ; and
- b. are in general accordance with
the outward appearance of the
Phase.

期數的認可人士證明本圖顯示的立面:

- a. 以2023年7月10日及2023年12月7日
的情況為準的期數的經批准的建築圖
則為基礎擬備;及
- b. 大致上與期數的外觀一致。