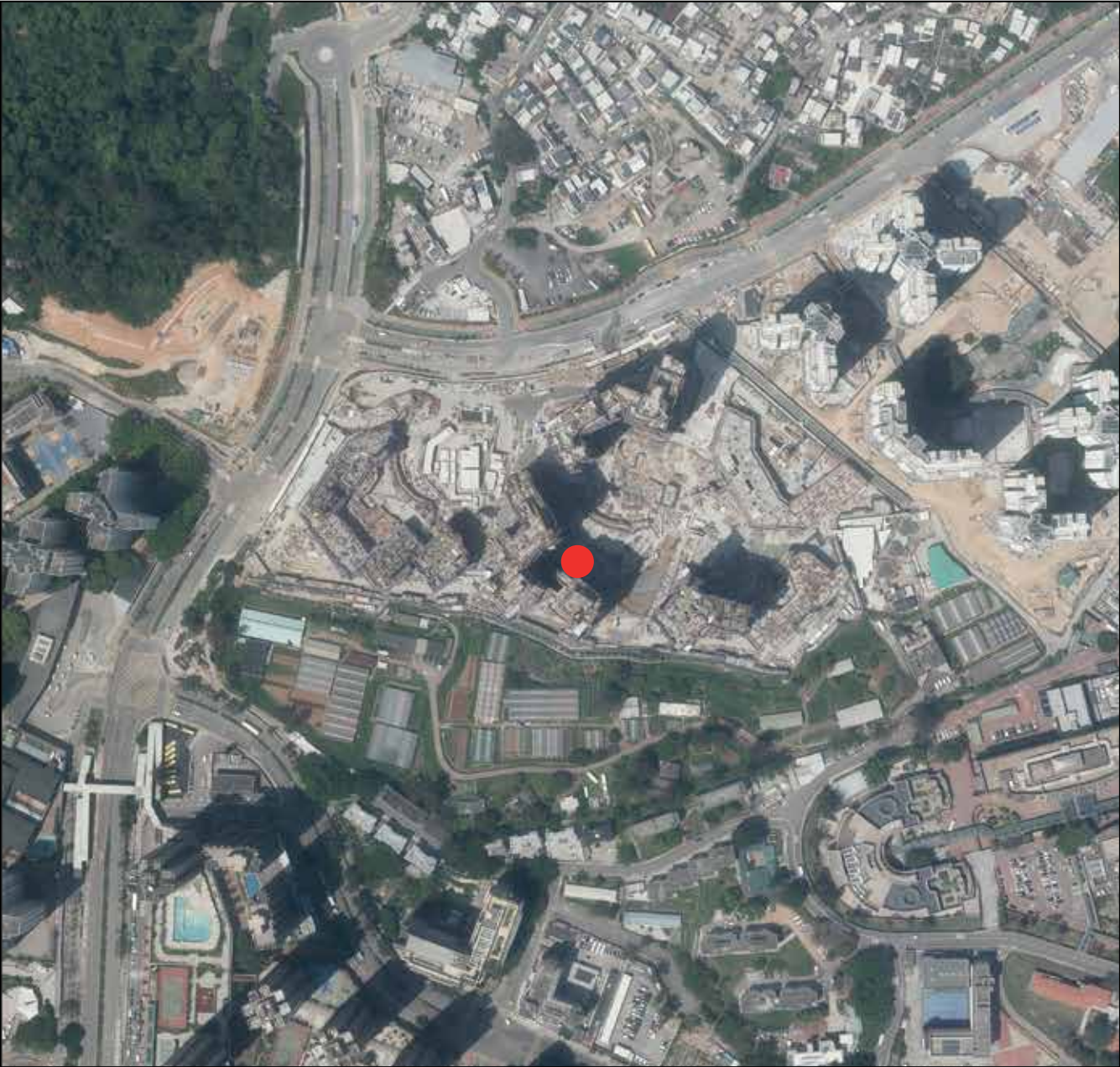


AERIAL PHOTOGRAPH OF THE PHASE 期數的鳥瞰照片



● Location of the Phase  
期數的位置

Survey and Mapping Office, Lands Department, The Government of HKSAR © Copyright reserved - reproduction by permission only  
香港特別行政區政府地政總署測繪處版權所有，未經許可，不得複製。

- Notes :
- 1. Copy of the aerial photograph of the Phase is available for inspection at the sales office during opening hours.
  - 2. The aerial photograph may show more than the area required under the Residential Properties (First-hand Sales) Ordinance due to technical reason that the boundary of the Phase is irregular.

備註：

- 1. 期數的鳥瞰照片之副本可於售樓處開放時間內免費查閱。
- 2. 由於期數的邊界不規則的技術原因，此鳥瞰照片所顯示的範圍可能超過《一手住宅物業銷售條例》所規定的範圍。

Adopted from part of the aerial photograph taken by the Survey and Mapping Office of Lands Department as follow:  
摘錄自地政總署測繪處之以下鳥瞰照片：

Photo No. 照片編號	Flying Height 飛行高度	Flight Date 飛行日期
E161883C	6,900 feet 6,900呎	8 April 2022 2022年4月8日



AERIAL PHOTOGRAPH OF THE PHASE 期數的鳥瞰照片



Adopted from part of the aerial photograph taken by the Survey and Mapping Office of Lands Department as follow:  
摘錄自地政總署測繪處之以下鳥瞰照片：

Photo No. 照片編號	Flying Height 飛行高度	Flight Date 飛行日期
E207168C	6,900 feet 6,900呎	20 September 2023 2023年9月20日

Location of the Phase  
期數的位置

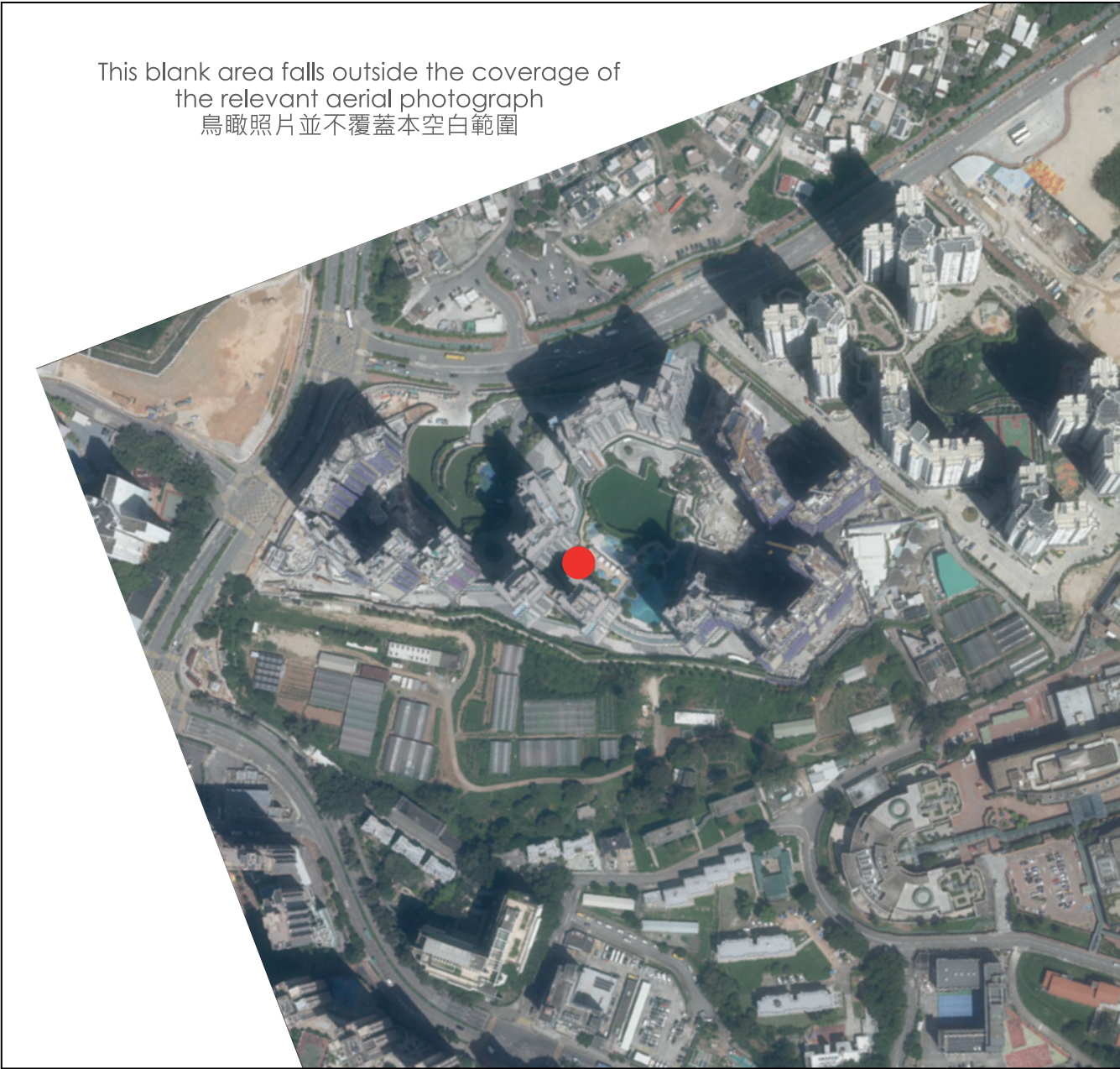
Survey and Mapping Office, Lands Department, The Government of HKSAR © Copyright reserved - reproduction by permission only  
香港特別行政區政府地政總署測繪處版權所有，未經許可，不得複製。

- Notes :
- 1. Copy of the aerial photograph of the Phase is available for inspection at the sales office during opening hours.
  - 2. The aerial photograph may show more than the area required under the Residential Properties (First-hand Sales) Ordinance due to technical reason that the boundary of the Phase is irregular.

- 備註：
- 1. 期數的鳥瞰照片之副本可於售樓處開放時間內免費查閱。
  - 2. 由於期數的邊界不規則的技術原因，此鳥瞰照片所顯示的範圍可能超過《一手住宅物業銷售條例》所規定的範圍。



AERIAL PHOTOGRAPH OF THE PHASE 期數的鳥瞰照片



● Location of the Phase  
期數的位置

Survey and Mapping Office, Lands Department, The Government of HKSAR © Copyright reserved - reproduction by permission only  
香港特別行政區政府地政總署測繪處版權所有，未經許可，不得複製。

Notes :

- 1. Copy of the aerial photograph of the Phase is available for inspection at the sales office during opening hours.
- 2. The aerial photograph may show more than the area required under the Residential Properties (First-hand Sales) Ordinance due to technical reason that the boundary of the Phase is irregular.

備註：

- 1. 期數的鳥瞰照片之副本可於售樓處開放時間內免費查閱。
- 2. 由於期數的邊界不規則的技術原因，此鳥瞰照片所顯示的範圍可能超過《一手住宅物業銷售條例》所規定的範圍。

Adopted from part of the aerial photograph taken by the Survey and Mapping Office of Lands Department as follow:  
摘錄自地政總署測繪處之以下鳥瞰照片：

Photo No. 照片編號	Flying Height 飛行高度	Flight Date 飛行日期
E207058C	6,900 feet 6,900呎	20 September 2023 2023年9月20日



AERIAL PHOTOGRAPH OF THE PHASE 期數的鳥瞰照片



This blank area falls outside the coverage of the relevant aerial photograph  
鳥瞰照片並不覆蓋本空白範圍

Location of the Phase  
期數的位置

Survey and Mapping Office, Lands Department, The Government of HKSAR © Copyright reserved - reproduction by permission only  
香港特別行政區政府地政總署測繪處版權所有，未經許可，不得複製。

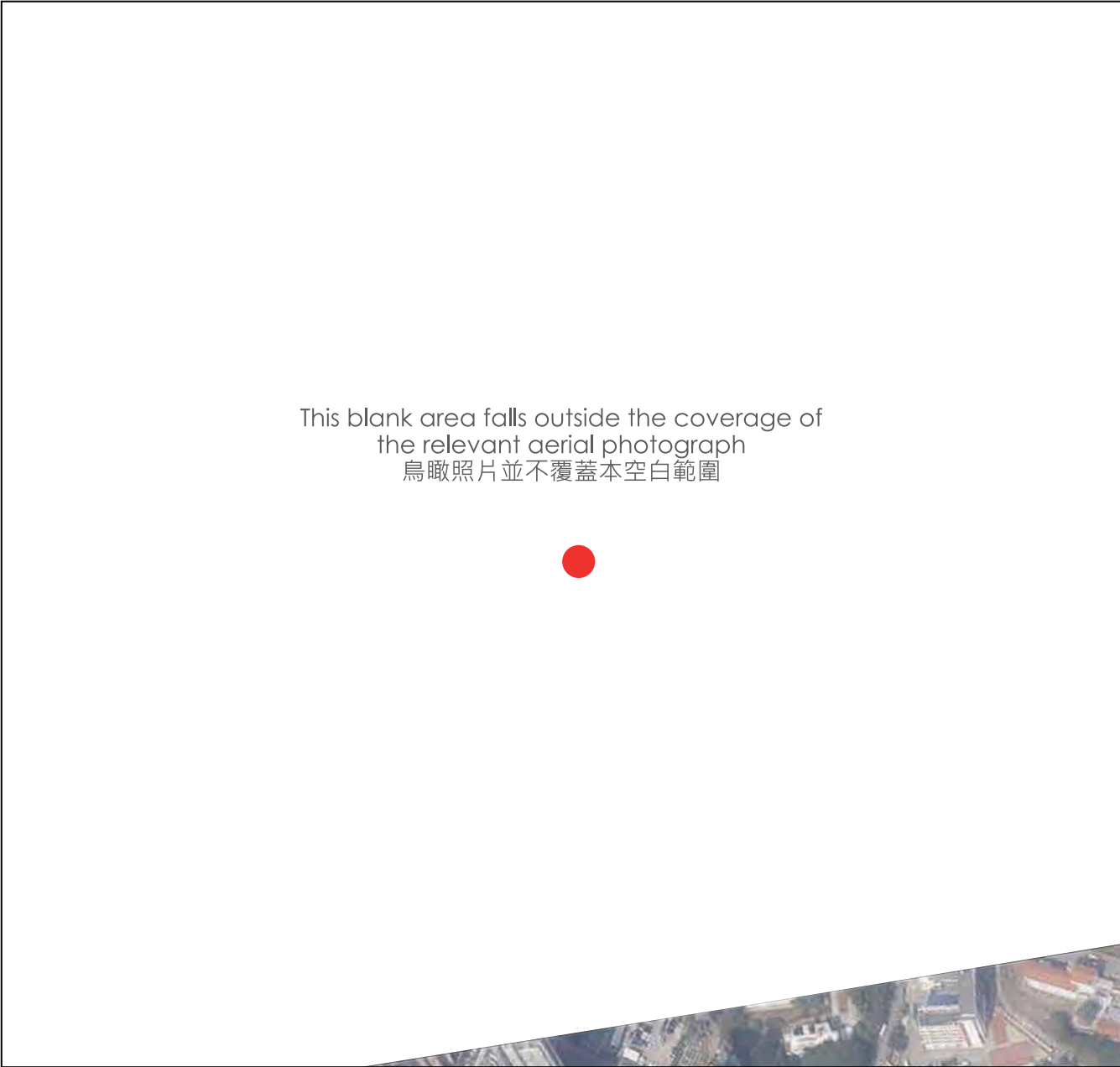
- Notes :
- 1. Copy of the aerial photograph of the Phase is available for inspection at the sales office during opening hours.
  - 2. The aerial photograph may show more than the area required under the Residential Properties (First-hand Sales) Ordinance due to technical reason that the boundary of the Phase is irregular.

- 備註：
- 1. 期數的鳥瞰照片之副本可於售樓處開放時間內免費查閱。
  - 2. 由於期數的邊界不規則的技術原因，此鳥瞰照片所顯示的範圍可能超過《一手住宅物業銷售條例》所規定的範圍。

Adopted from part of the aerial photograph taken by the Survey and Mapping Office of Lands Department as follow:  
摘錄自地政總署測繪處之以下鳥瞰照片：

Photo No. 照片編號	Flying Height 飛行高度	Flight Date 飛行日期
E207057C	6,900 feet 6,900呎	20 September 2023 2023年9月20日

AERIAL PHOTOGRAPH OF THE PHASE 期數的鳥瞰照片



Location of the Phase  
期數的位置

Survey and Mapping Office, Lands Department, The Government of HKSAR © Copyright reserved - reproduction by permission only  
香港特別行政區政府地政總署測繪處版權所有，未經許可，不得複製。

Notes :

- 1. Copy of the aerial photograph of the Phase is available for inspection at the sales office during opening hours.
- 2. The aerial photograph may show more than the area required under the Residential Properties (First-hand Sales) Ordinance due to technical reason that the boundary of the Phase is irregular.

備註：

- 1. 期數的鳥瞰照片之副本可於售樓處開放時間內免費查閱。
- 2. 由於期數的邊界不規則的技術原因，此鳥瞰照片所顯示的範圍可能超過《一手住宅物業銷售條例》所規定的範圍。

Adopted from part of the aerial photograph taken by the Survey and Mapping Office of Lands Department as follow:  
摘錄自地政總署測繪處之以下鳥瞰照片：

Photo No. 照片編號	Flying Height 飛行高度	Flight Date 飛行日期
E213554C	6,900 feet 6,900呎	28 November 2023 2023年11月28日