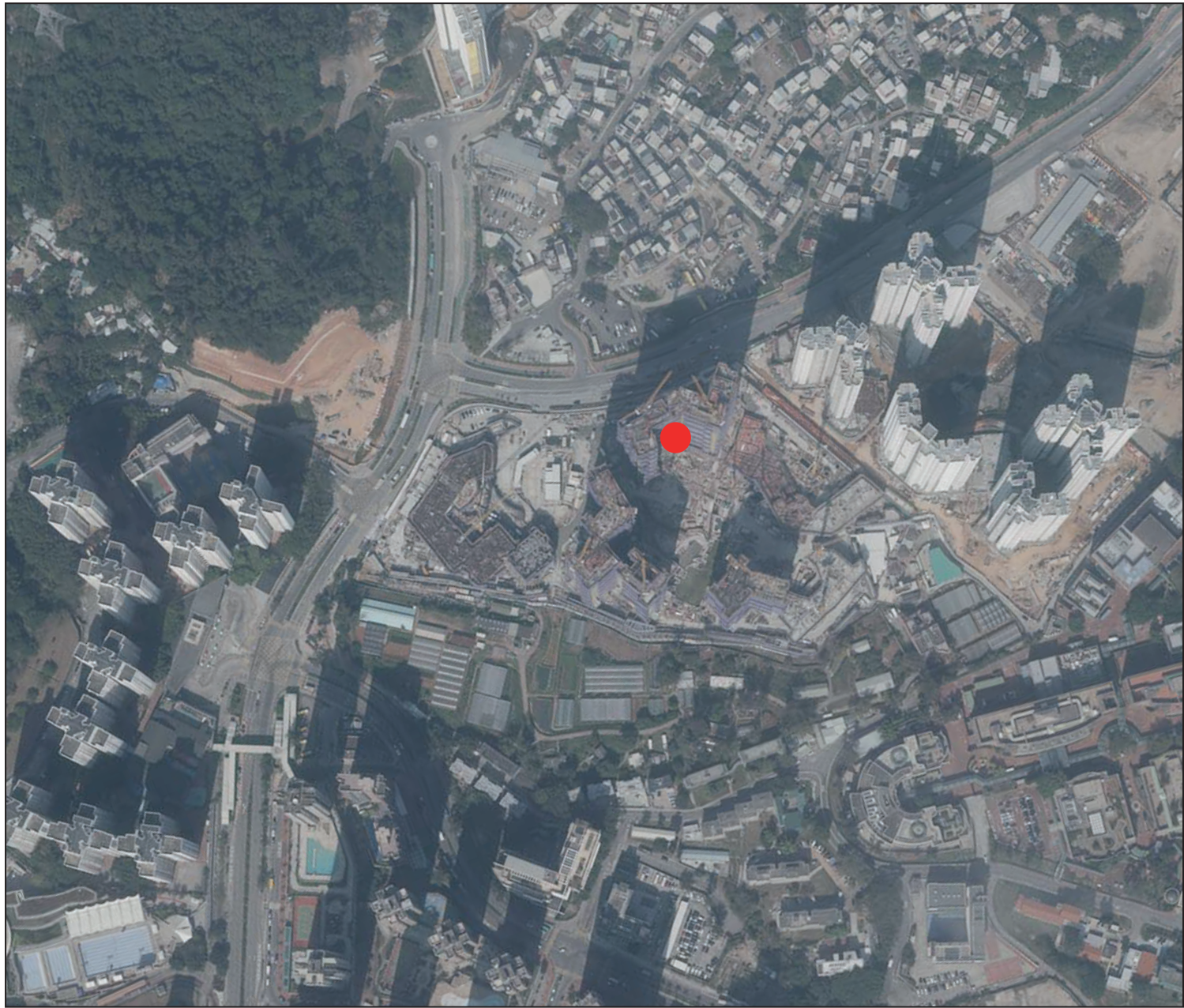


AERIAL PHOTOGRAPH OF THE PHASE 期數的鳥瞰照片



Adopted from part of the aerial photograph taken by the Survey and Mapping Office of Lands Department at a flying height of 6,900 feet, photo No. E146583C, date of flight : 19 January 2022.  
摘錄自地政總署測繪處在6,900呎的飛行高度拍攝之鳥瞰照片，照片編號E146583C，飛行日期：2022年1月19日。

Location of the Phase  
期數的位置

Survey and Mapping Office, Lands Department, The Government of HKSAR © Copyright reserved - reproduction by permission only  
香港特別行政區政府地政總署測繪處版權所有，未經許可，不得複製。

Notes :

- 1. Copy of the aerial photograph of the Phase is available for inspection at the sales office during opening hours.
- 2. The aerial photograph may show more than the area required under the Residential Properties (First-hand Sales) Ordinance due to technical reason that the boundary of the Phase is irregular.

備註：

- 1. 期數的鳥瞰照片之副本可於售樓處開放時間內免費查閱。
- 2. 由於期數的邊界不規則的技術原因，此鳥瞰照片所顯示的範圍可能超過《一手住宅物業銷售條例》所規定的範圍。



AERIAL PHOTOGRAPH OF THE PHASE 期數的鳥瞰照片



This blank area falls outside the coverage of the relevant aerial photograph  
鳥瞰照片並不覆蓋本空白範圍

Adopted from part of the aerial photograph taken by the Survey and Mapping Office of Lands Department at a flying height of 6,900 feet, photo No. E175593C, date of flight : 19 December 2022.  
摘錄自地政總署測繪處在6,900呎的飛行高度拍攝之鳥瞰照片，照片編號E175593C，飛行日期：2022年12月19日。

Location of the Phase  
期數的位置

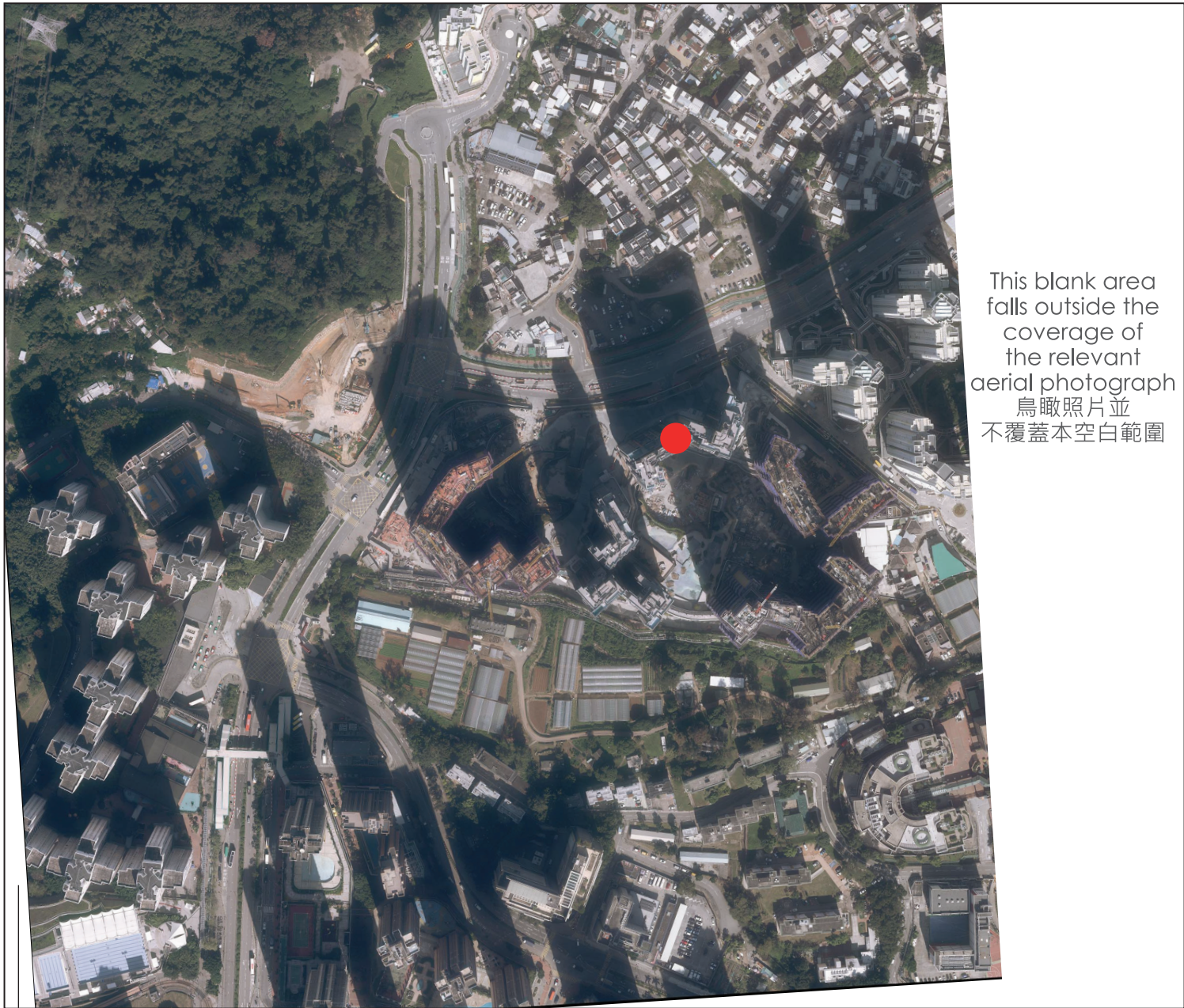
Survey and Mapping Office, Lands Department, The Government of HKSAR © Copyright reserved - reproduction by permission only  
香港特別行政區政府地政總署測繪處版權所有，未經許可，不得複製。

- Notes :
- 1. Copy of the aerial photograph of the Phase is available for inspection at the sales office during opening hours.
  - 2. The aerial photograph may show more than the area required under the Residential Properties (First-hand Sales) Ordinance due to technical reason that the boundary of the Phase is irregular.

- 備註：
- 1. 期數的鳥瞰照片之副本可於售樓處開放時間內免費查閱。
  - 2. 由於期數的邊界不規則的技術原因，此鳥瞰照片所顯示的範圍可能超過《一手住宅物業銷售條例》所規定的範圍。



AERIAL PHOTOGRAPH OF THE PHASE 期數的鳥瞰照片



Adopted from part of the aerial photograph taken by the Survey and Mapping Office of Lands Department at a flying height of 6,900 feet, photo No. E175595C, date of flight : 19 December 2022.  
摘錄自地政總署測繪處在6,900呎的飛行高度拍攝之鳥瞰照片，照片編號E175595C，飛行日期：2022年12月19日。

This blank area falls outside the coverage of the relevant aerial photograph  
鳥瞰照片並不覆蓋本空白範圍

Location of the Phase 期數的位置  
This blank area falls outside the coverage of the relevant aerial photograph  
鳥瞰照片並不覆蓋本空白範圍

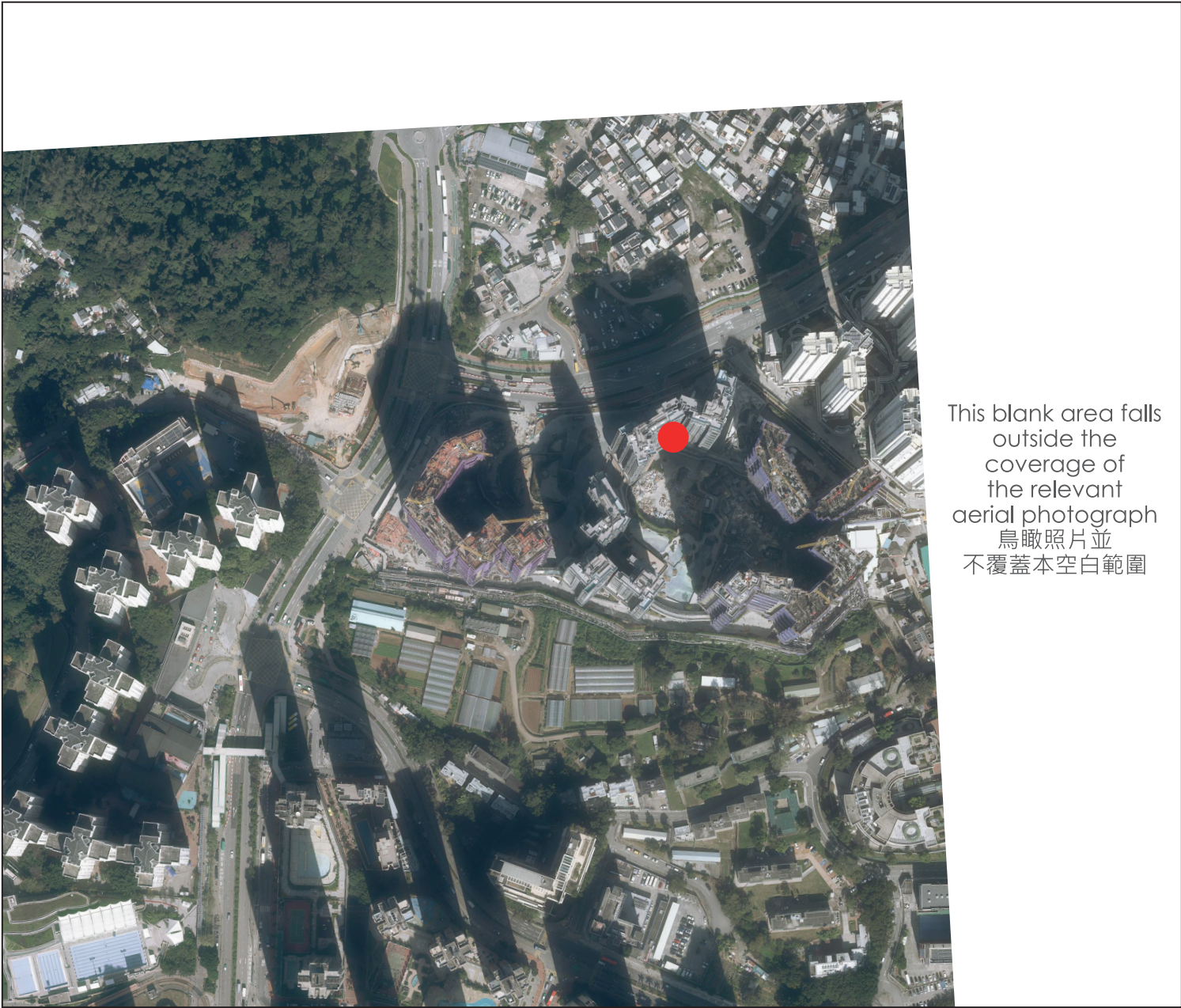
Survey and Mapping Office, Lands Department, The Government of HKSAR © Copyright reserved - reproduction by permission only  
香港特別行政區政府地政總署測繪處版權所有，未經許可，不得複製。

- Notes :
- 1. Copy of the aerial photograph of the Phase is available for inspection at the sales office during opening hours.
  - 2. The aerial photograph may show more than the area required under the Residential Properties (First-hand Sales) Ordinance due to technical reason that the boundary of the Phase is irregular.

- 備註：
- 1. 期數的鳥瞰照片之副本可於售樓處開放時間內免費查閱。
  - 2. 由於期數的邊界不規則的技術原因，此鳥瞰照片所顯示的範圍可能超過《一手住宅物業銷售條例》所規定的範圍。



AERIAL PHOTOGRAPH OF THE PHASE 期數的鳥瞰照片



Adopted from part of the aerial photograph taken by the Survey and Mapping Office of Lands Department at a flying height of 6,900 feet, photo No. E175717C, date of flight : 19 December 2022.  
摘錄自地政總署測繪處在6,900呎的飛行高度拍攝之鳥瞰照片，  
照片編號E175717C，飛行日期：2022年12月19日。

This blank area falls outside the coverage of the relevant aerial photograph  
鳥瞰照片並不覆蓋本空白範圍

Location of the Phase  
期數的位置

Survey and Mapping Office, Lands Department, The Government of HKSAR © Copyright reserved - reproduction by permission only  
香港特別行政區政府地政總署測繪處版權所有，未經許可，不得複製。

- Notes :
- 1. Copy of the aerial photograph of the Phase is available for inspection at the sales office during opening hours.
  - 2. The aerial photograph may show more than the area required under the Residential Properties (First-hand Sales) Ordinance due to technical reason that the boundary of the Phase is irregular.

- 備註：
- 1. 期數的鳥瞰照片之副本可於售樓處開放時間內免費查閱。
  - 2. 由於期數的邊界不規則的技術原因，此鳥瞰照片所顯示的範圍可能超過《一手住宅物業銷售條例》所規定的範圍。