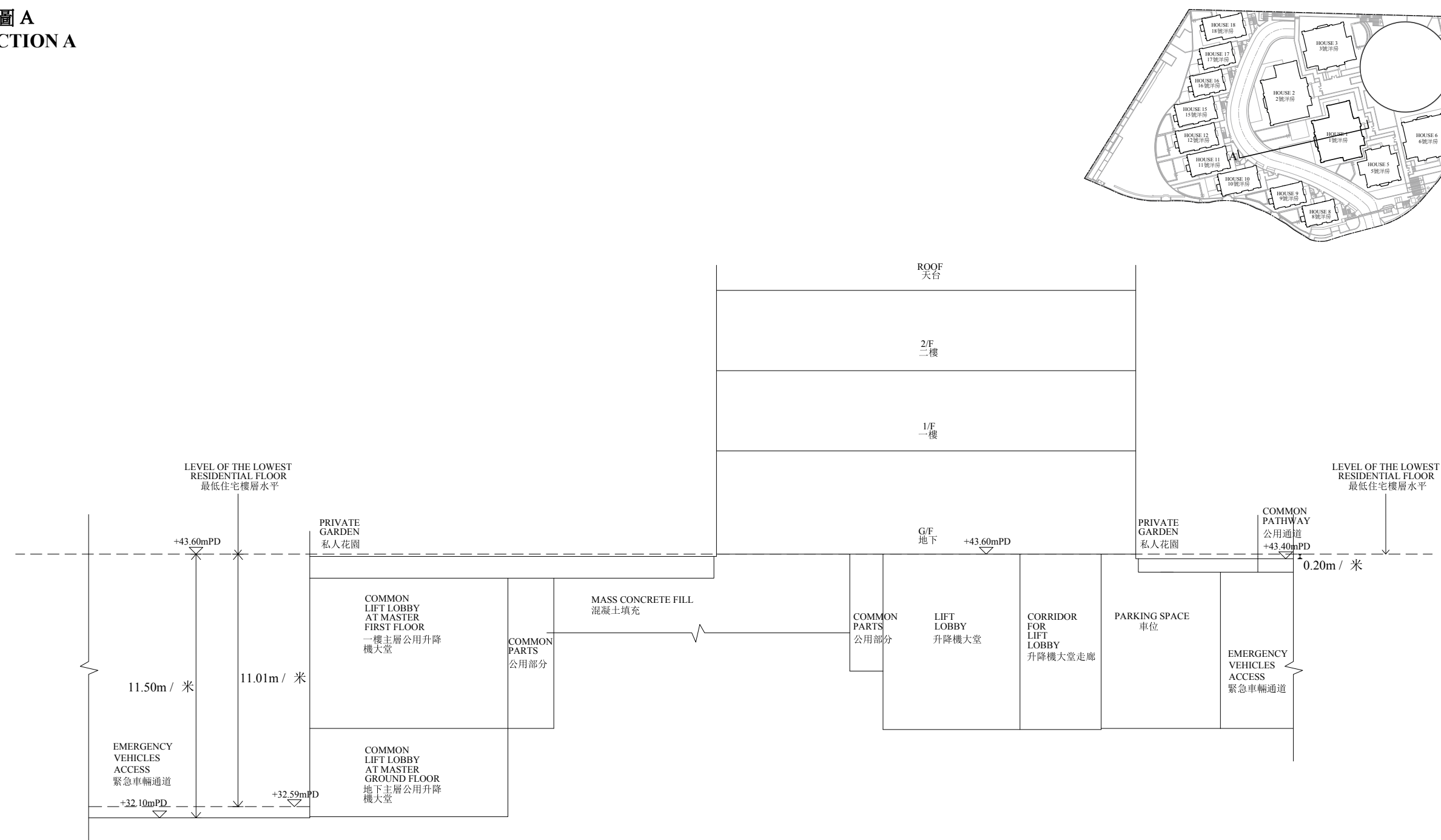


1 號洋房截面圖 A
HOUSE 1 SECTION A

----- 虛線為最低住宅樓層水平
Dotted line denotes the level of the lowest residential floor

—— ——— 土地界線
Boundary Line

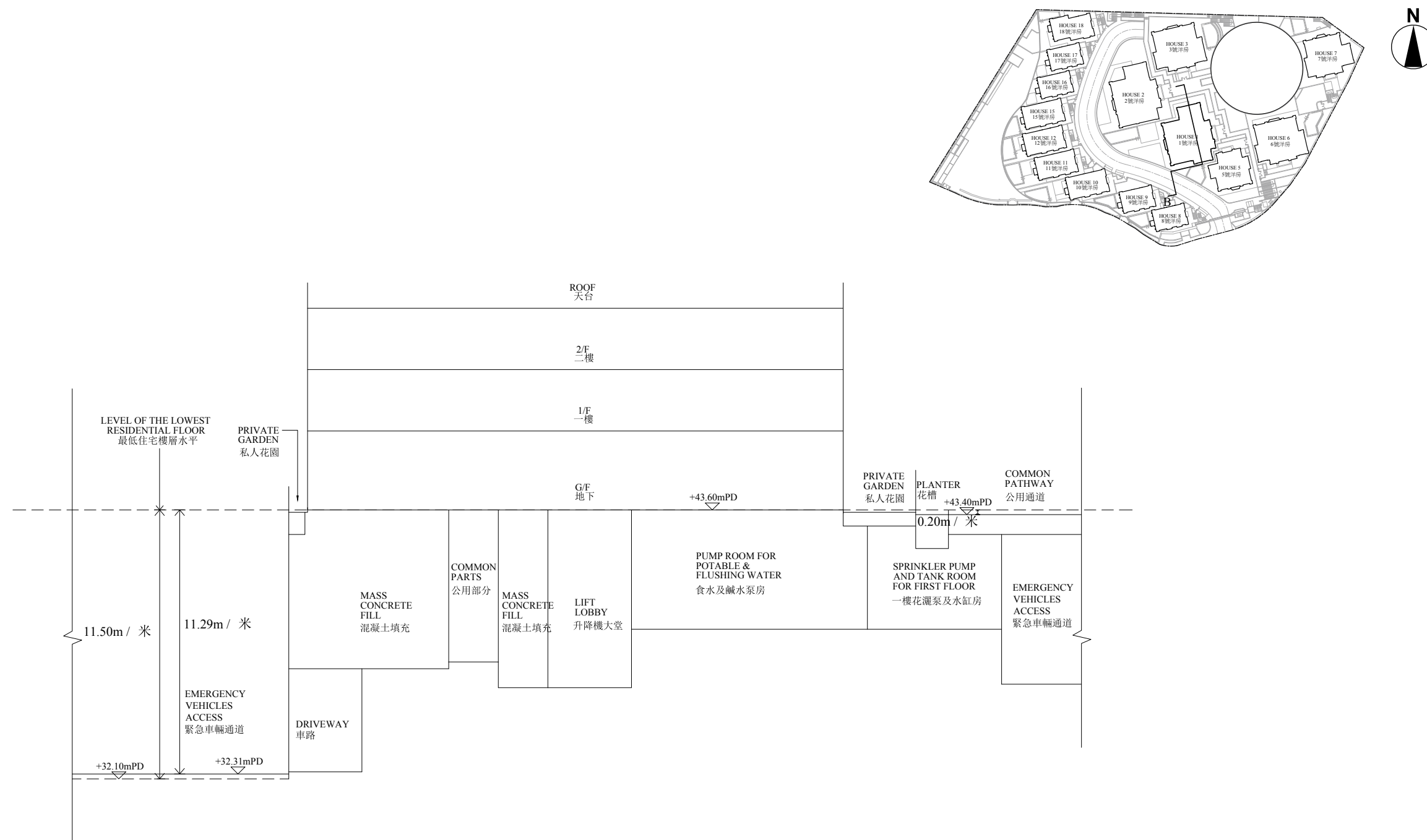
▽ 香港主水平基準以上高度 (米)
Height in metres above Hong Kong Principal Datum (HKPD)

毗連建築物的一段緊急車輛通道為香港主水平基準以上 32.10 至 32.59 米。

毗連建築物的一段公用通道為香港主水平基準以上 43.40 米。

The part of Emergency Vehicular Access adjacent to the building is 32.10 to 32.59 metres above the Hong Kong Principal Datum.

The part of common pathway adjacent to the building is 43.40 metres above the Hong Kong Principal Datum.

1 號洋房截面圖 B
HOUSE 1 SECTION B

----- 虛線為最低住宅樓層水平
Dotted line denotes the level of the lowest residential floor

—— ——— 土地界線
Boundary Line

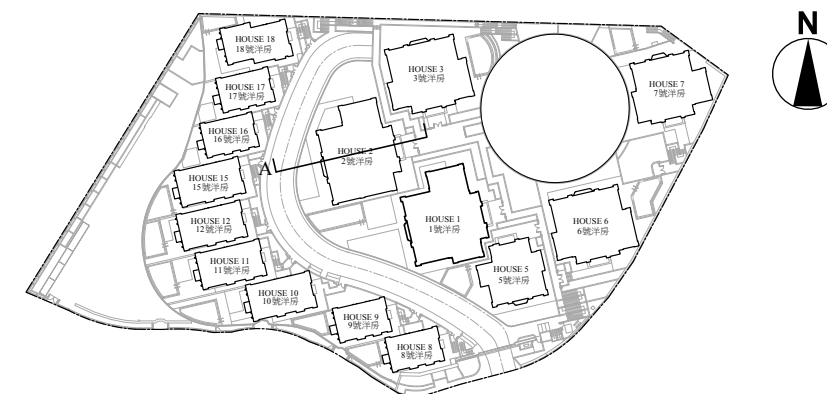
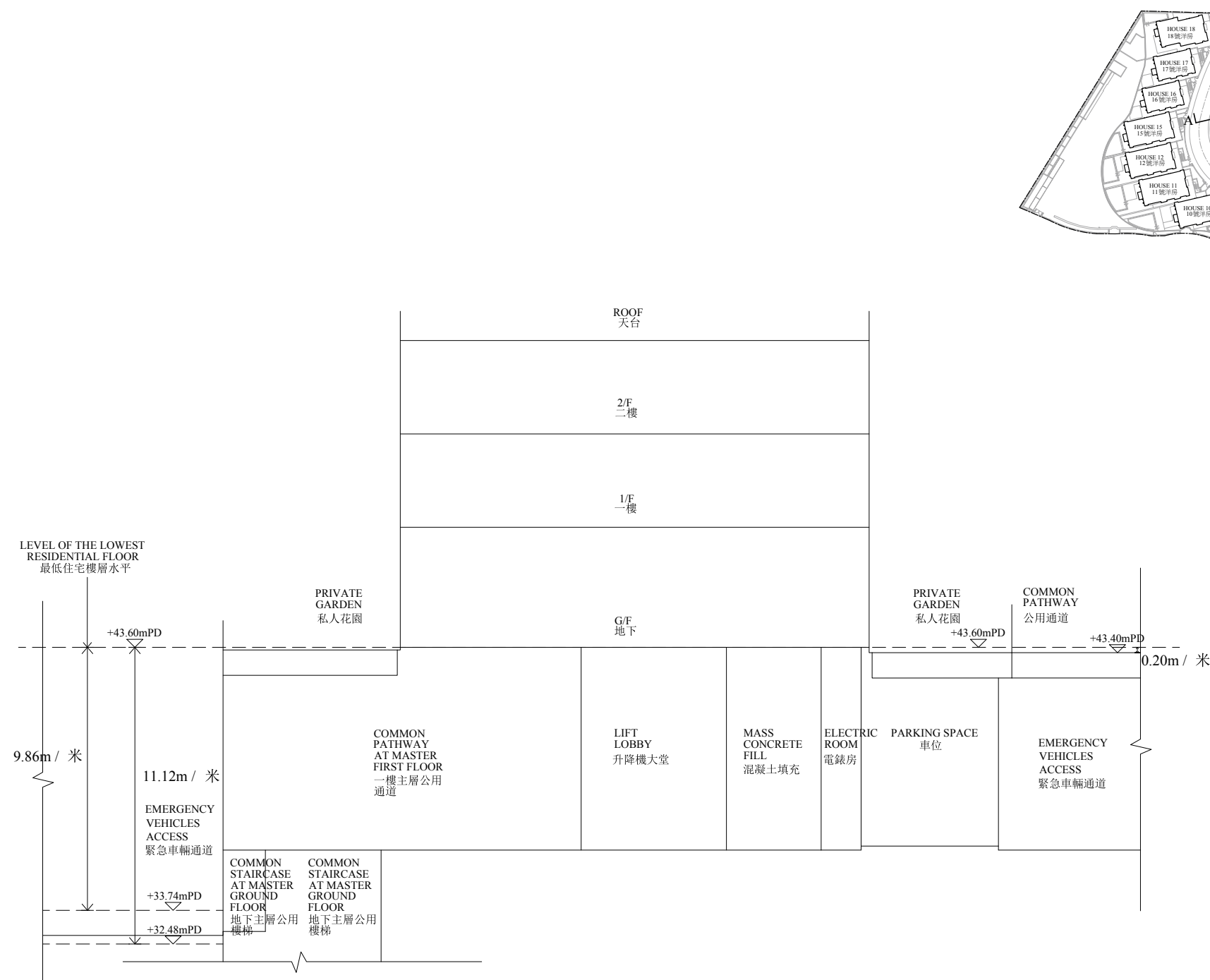
▽ 香港主水平基準以上高度 (米)
Height in metres above Hong Kong Principal Datum (HKPD)

毗連建築物的一段緊急車輛通道為香港主水平基準以上 32.10 至 32.31 米。

毗連建築物的一段公用通道為香港主水平基準以上 43.40 米。

The part of Emergency Vehicular Access adjacent to the building is 32.10 to 32.31 metres above the Hong Kong Principal Datum.

The part of common pathway adjacent to the building is 43.40 metres above the Hong Kong Principal Datum.

2 號洋房截面圖 A
HOUSE 2 SECTION A

----- 虛線為最低住宅樓層水平
Dotted line denotes the level of the lowest residential floor

——— 土地界線
Boundary Line

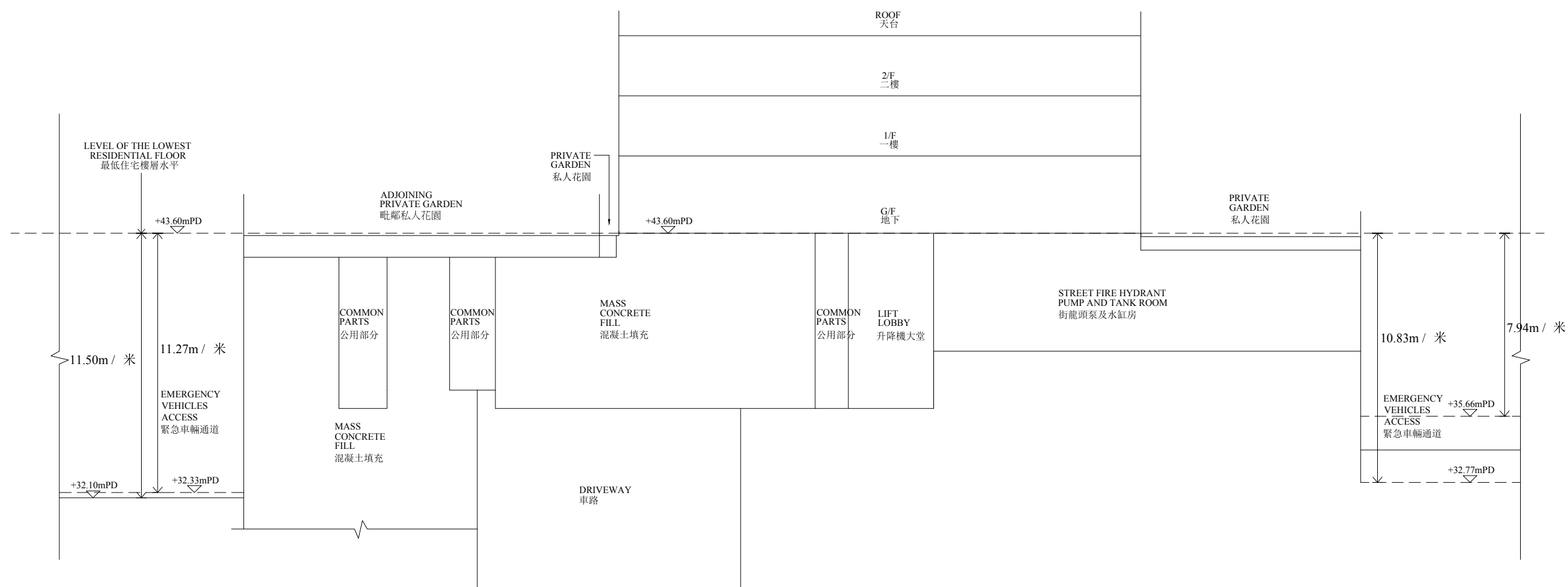
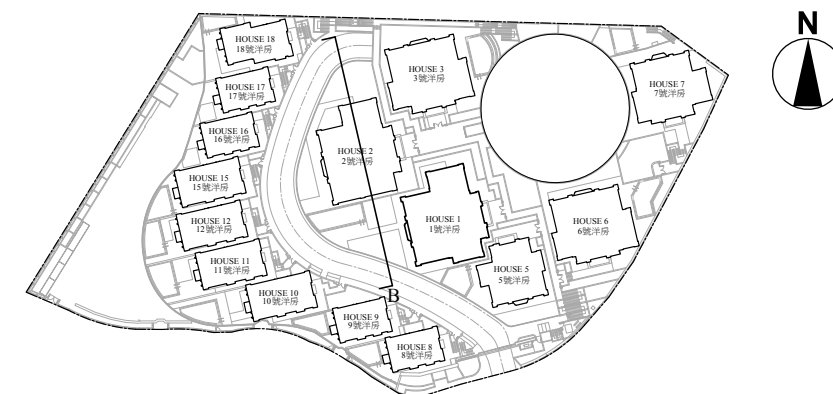
▽ 香港主水平基準以上高度 (米)
Height in metres above Hong Kong Principal Datum (HKPD)

毗連建築物的一段緊急車輛通道為香港主水平基準以上 32.48 至 33.74 米。

毗連建築物的一段公用通道為香港主水平基準以上 43.40 米。

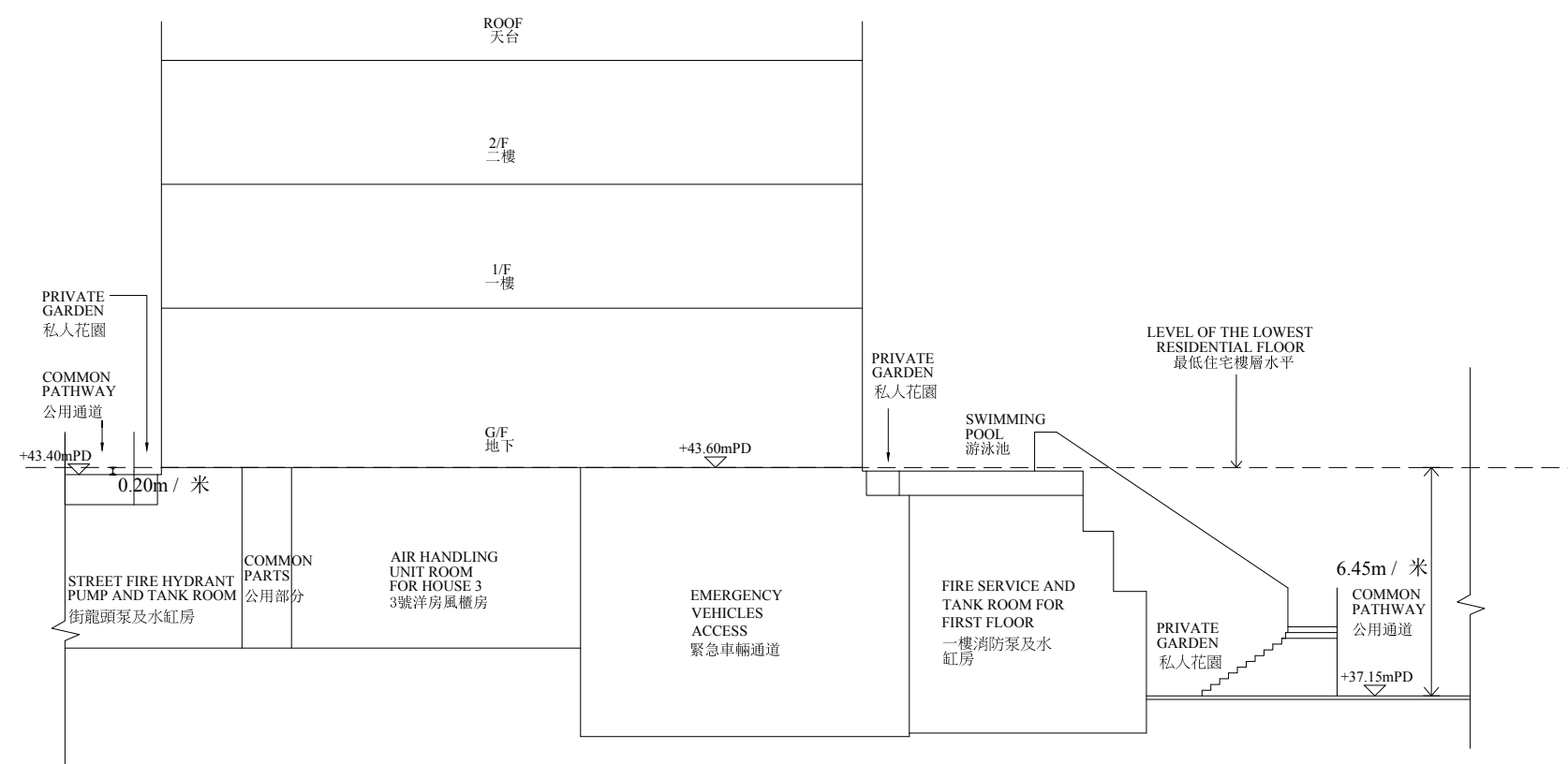
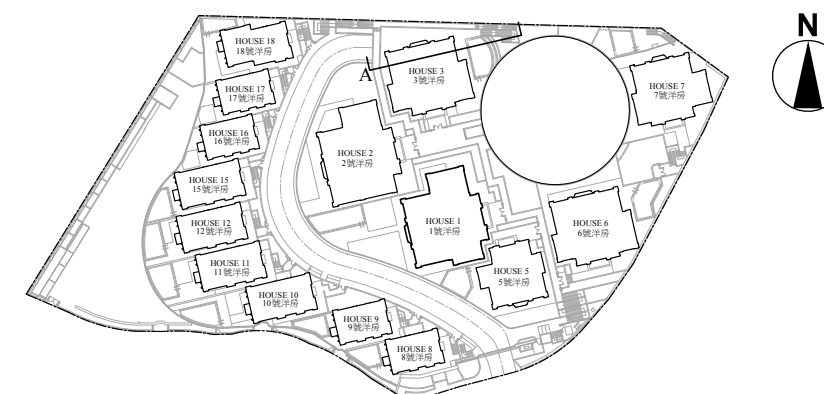
The part of Emergency Vehicular Access adjacent to the building is 32.48 to 33.74 metres above the Hong Kong Principal Datum.

The part of common pathway adjacent to the building is 43.40 metres above the Hong Kong Principal Datum.

2 號洋房截面圖 B
HOUSE 2 SECTION B

- 虛線為最低住宅樓層水平
Dotted line denotes the level of the lowest residential floor
- ——— 土地界線
Boundary Line
- ▽ 香港主水平基準以上高度（米）
Height in metres above Hong Kong Principal Datum (HKPD)

毗連建築物的一段緊急車輛通道為香港主水平基準以上 32.10 至 32.33 米。
毗連建築物的一段緊急車輛通道為香港主水平基準以上 32.77 至 35.66 米。
The part of Emergency Vehicular Access adjacent to the building is 32.10 to 32.33 metres above the Hong Kong Principal Datum.
The part of Emergency Vehicular Access adjacent to the building is 32.77 to 35.66 metres above the Hong Kong Principal Datum.

3 號洋房截面圖 A
HOUSE 3 SECTION A

----- 虛線為最低住宅樓層水平
Dotted line denotes the level of the lowest residential floor

—— ——— 土地界線
Boundary Line

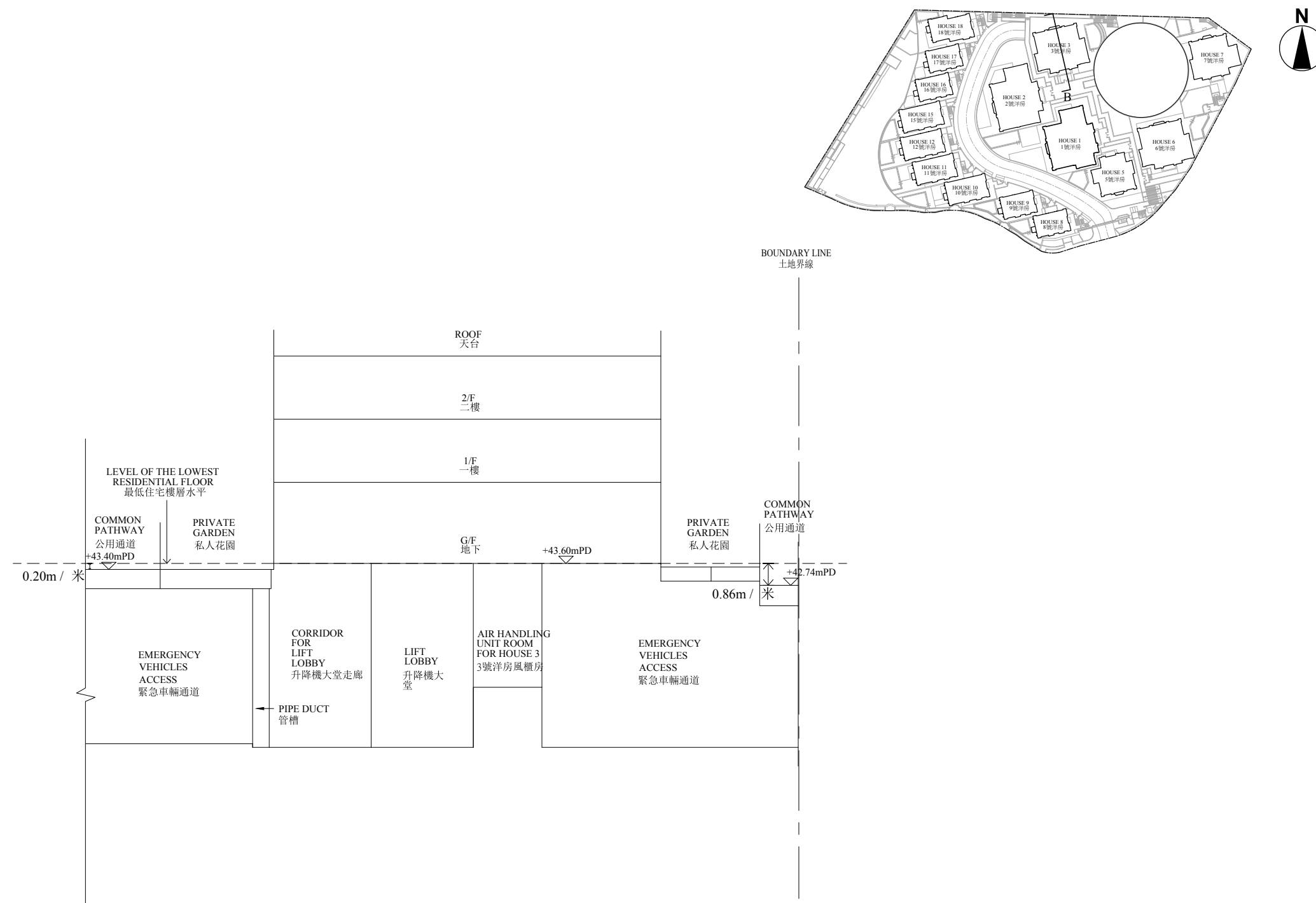
▽ 香港主水平基準以上高度 (米)
Height in metres above Hong Kong Principal Datum (HKPD)

毗連建築物的一段公用通道為香港主水平基準以上 43.40 米。

毗連建築物的一段公用通道為香港主水平基準以上 37.15 米。

The part of common pathway adjacent to the building is 43.40 metres above the Hong Kong Principal Datum.

The part of common pathway adjacent to the building is 37.15 metres above the Hong Kong Principal Datum.

3 號洋房截面圖 B
HOUSE 3 SECTION B

----- 虛線為最低住宅樓層水平
Dotted line denotes the level of the lowest residential floor

—— ——— 土地界線
Boundary Line

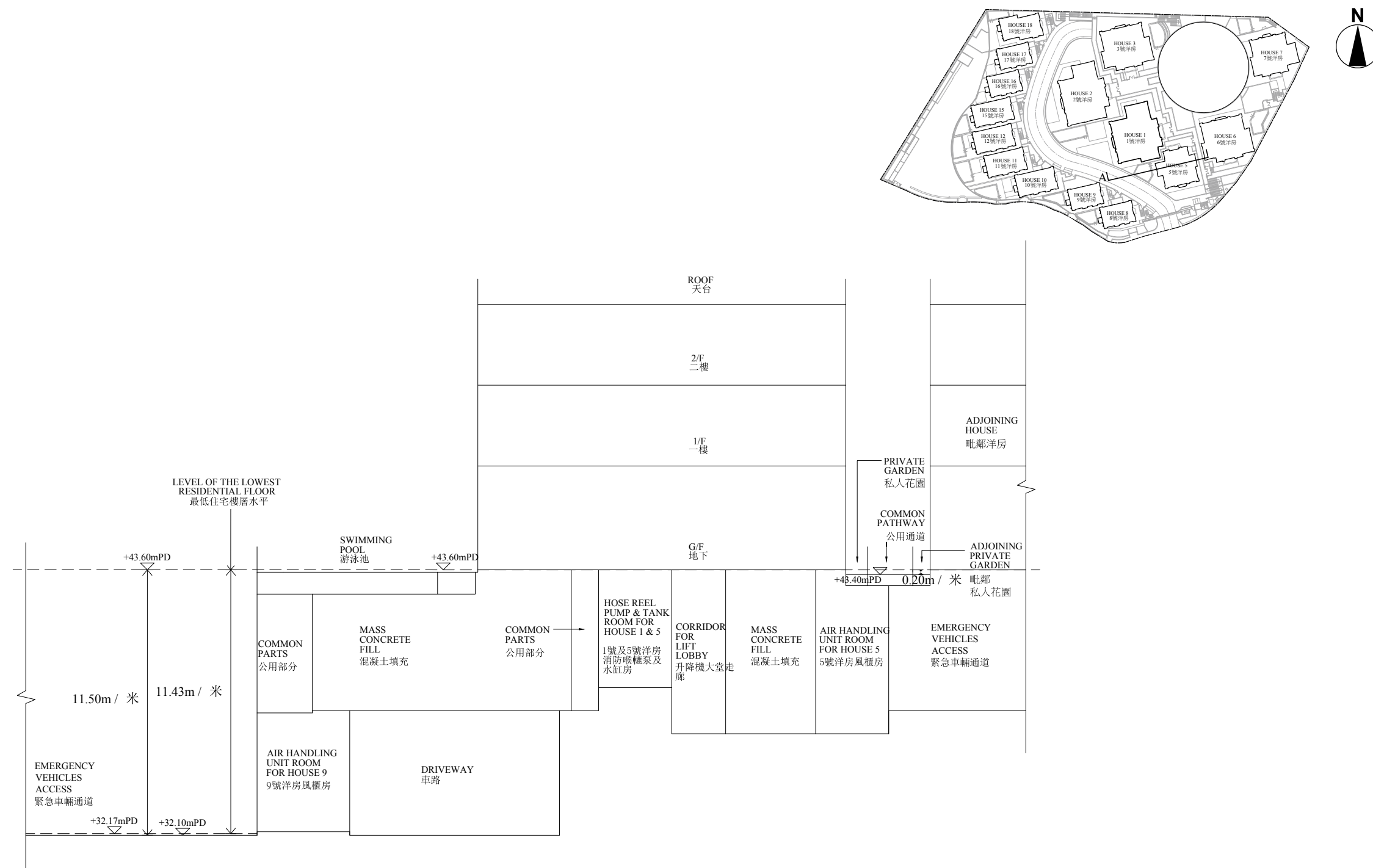
▽ 香港主水平基準以上高度（米）
Height in metres above Hong Kong Principal Datum (HKPD)

毗連建築物的一段公用通道為香港主水平基準以上 43.40 米。

毗連建築物的一段公用通道為香港主水平基準以上 42.74 米。

The part of common pathway adjacent to the building is 43.40 metres above the Hong Kong Principal Datum.

The part of common pathway adjacent to the building is 42.74 metres above the Hong Kong Principal Datum.

5 號洋房截面圖 A
HOUSE 5 SECTION A

----- 虛線為最低住宅樓層水平
Dotted line denotes the level of the lowest residential floor

—— ——— 土地界線
Boundary Line

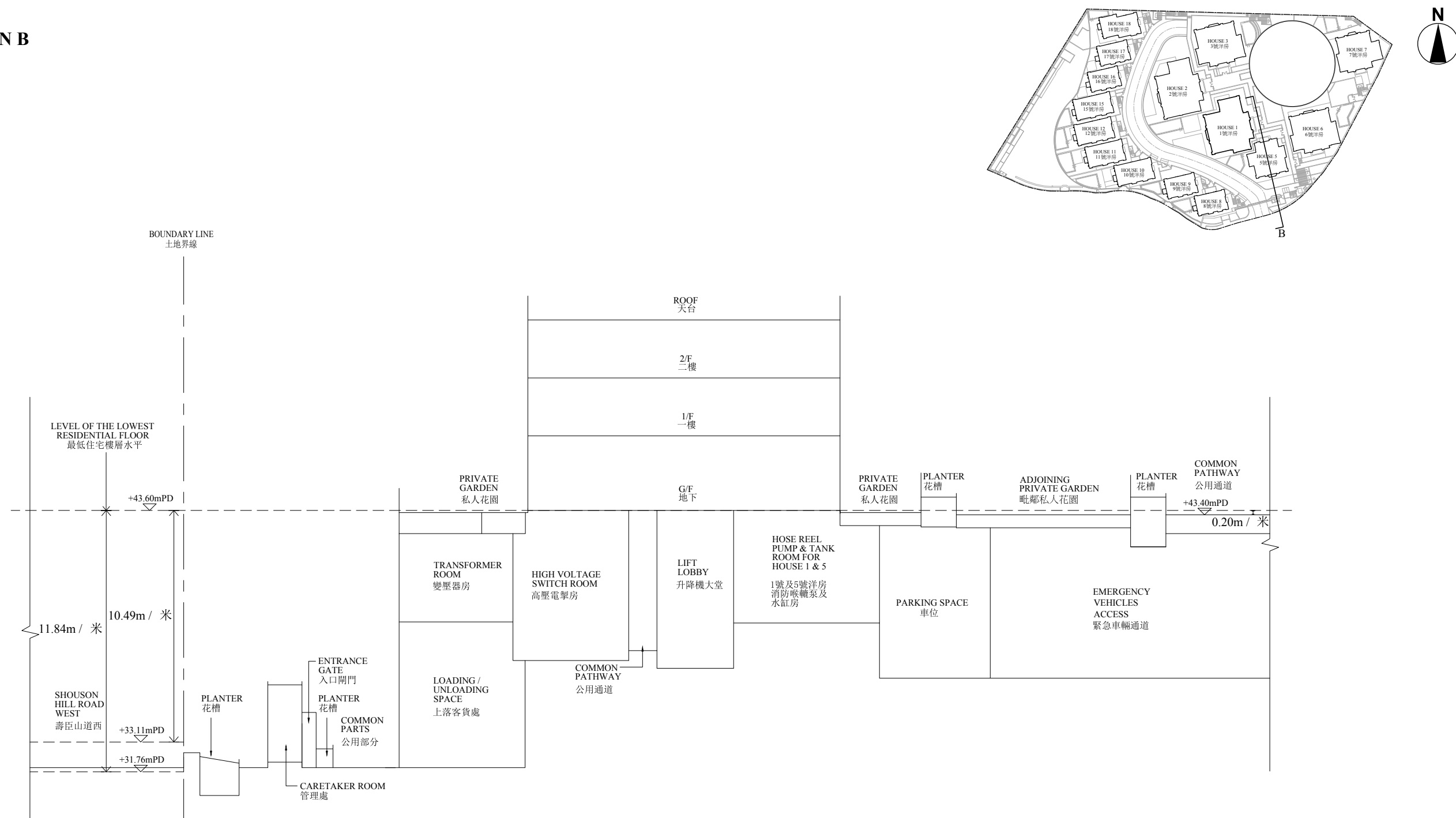
▽ 香港主水平基準以上高度（米）
Height in metres above Hong Kong Principal Datum (HKPD)

毗連建築物的一段緊急車輛通道為香港主水平基準以上 32.10 至 32.17 米。

毗連建築物的一段公用通道為香港主水平基準以上 43.40 米。

The part of Emergency Vehicular Access adjacent to the building is 32.10 to 32.17 metres above the Hong Kong Principal Datum.

The part of common pathway adjacent to the building is 43.40 metres above the Hong Kong Principal Datum.

5 號洋房截面圖 B
HOUSE 5 SECTION B

虛線為最低住宅樓層水平
Dotted line denotes the level of the lowest residential floor

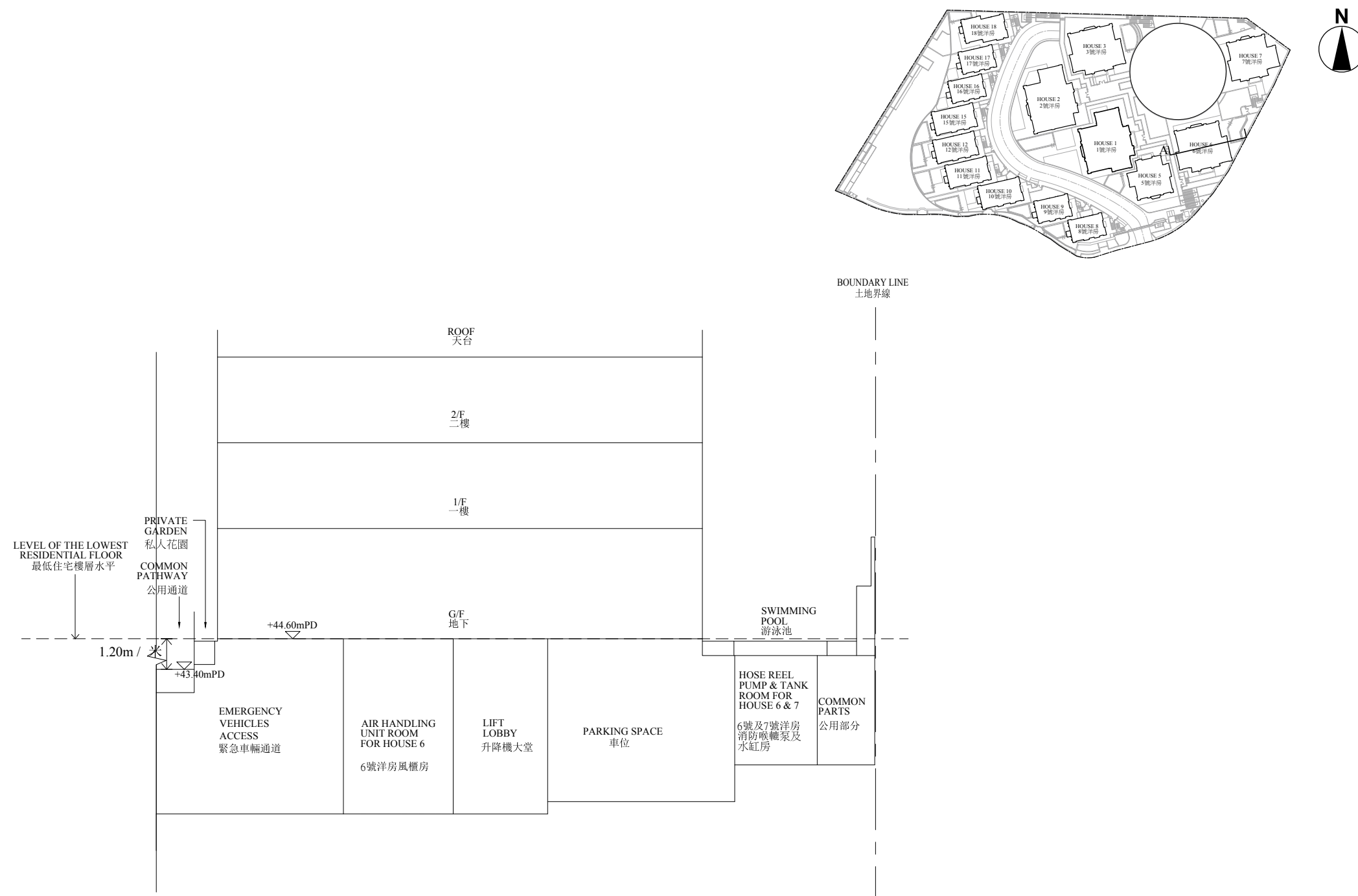
土地界線
Boundary Line

香港主水平基準以上高度（米）
Height in metres above Hong Kong Principal Datum (HKPD)

毗連建築物的一段壽臣山道西為香港主水平基準以上 31.76 至 33.11 米。

毗連建築物的一段公用通道為香港主水平基準以上 43.40 米。

The part of Shouson Hill Road West adjacent to the building is 31.76 to 33.11 metres above the Hong Kong Principal Datum.
The part of common pathway adjacent to the building is 43.40 metres above the Hong Kong Principal Datum.

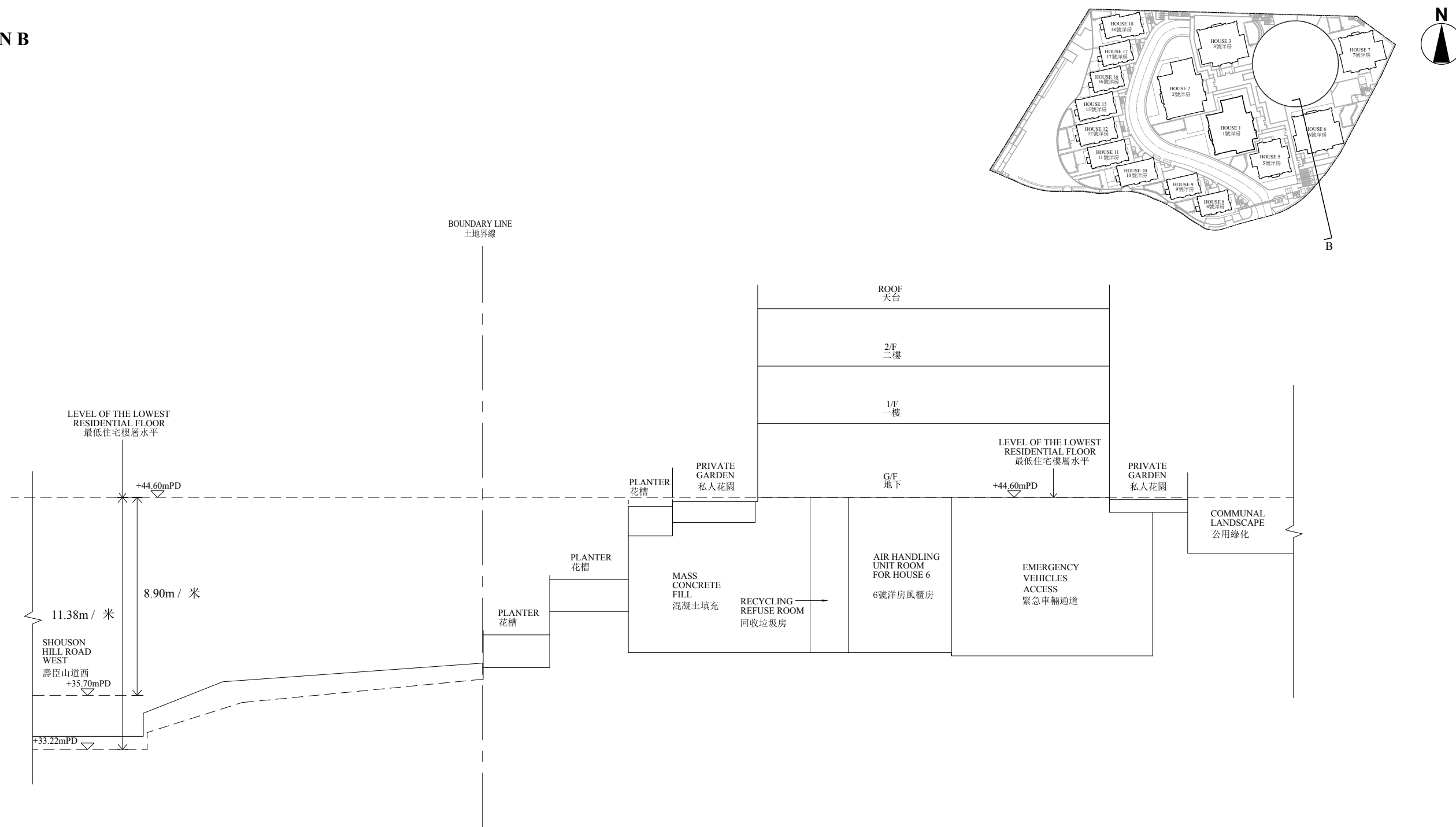
6 號洋房截面圖 A
HOUSE 6 SECTION A

----- 虛線為最低住宅樓層水平
Dotted line denotes the level of the lowest residential floor

—— ——— 土地界線
Boundary Line

▽ 香港主水平基準以上高度（米）
Height in metres above Hong Kong Principal Datum (HKPD)

毗連建築物的一段公用通道為香港主水平基準以上 43.40 米。
The part of common pathway adjacent to the building is 43.40 metres above the Hong Kong Principal Datum.

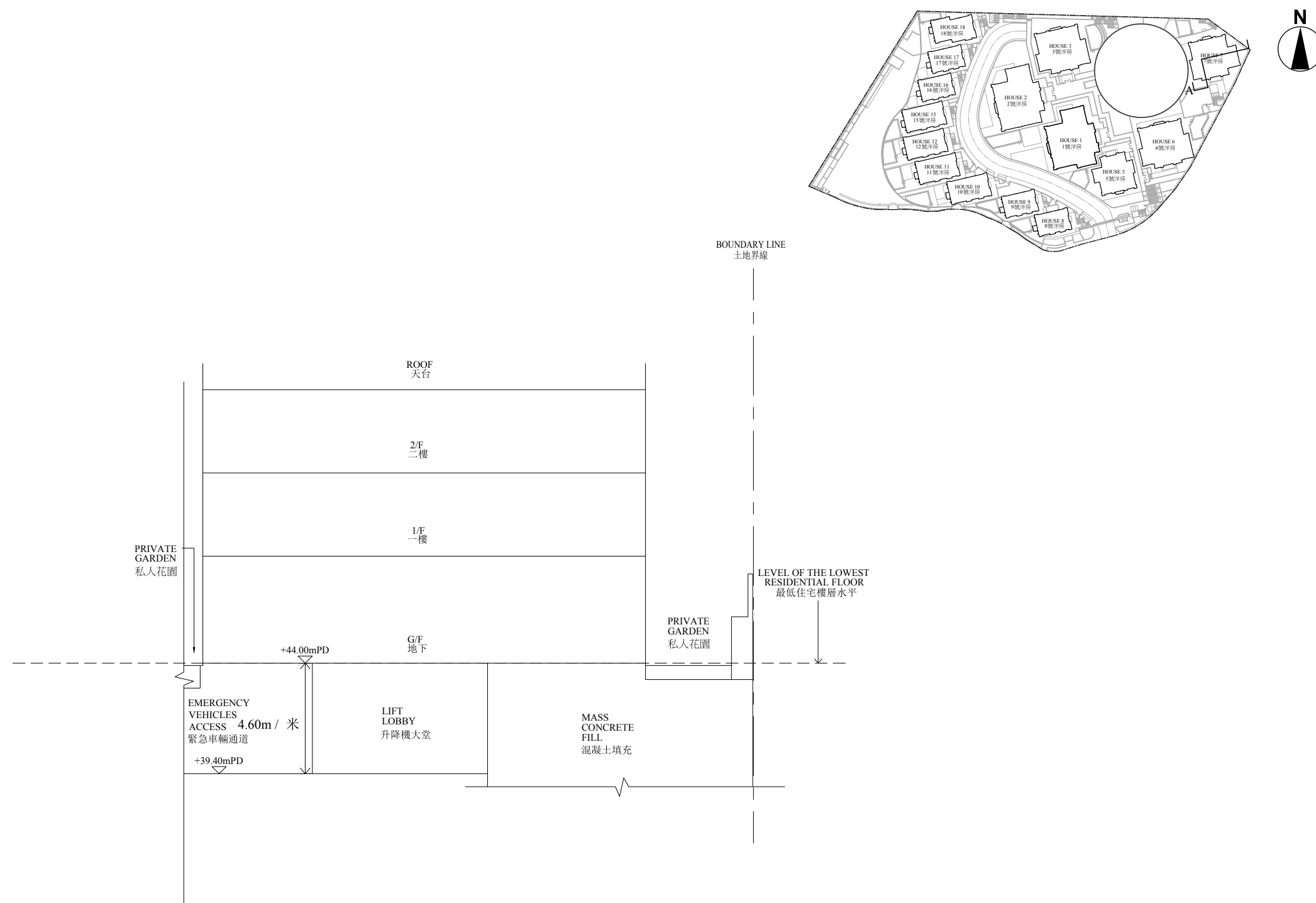
6 號洋房截面圖 B
HOUSE 6 SECTION B

----- 虛線為最低住宅樓層水平
Dotted line denotes the level of the lowest residential floor

——— 土地界線
Boundary Line

▽ 香港主水平基準以上高度（米）
Height in metres above Hong Kong Principal Datum (HKPD)

毗連建築物的一段壽臣山道西為香港主水平基準以上 33.22 至 35.70 米。
The part of Shouson Hill Road West adjacent to the building is 33.22 to 35.70 metres above the Hong Kong Principal Datum.

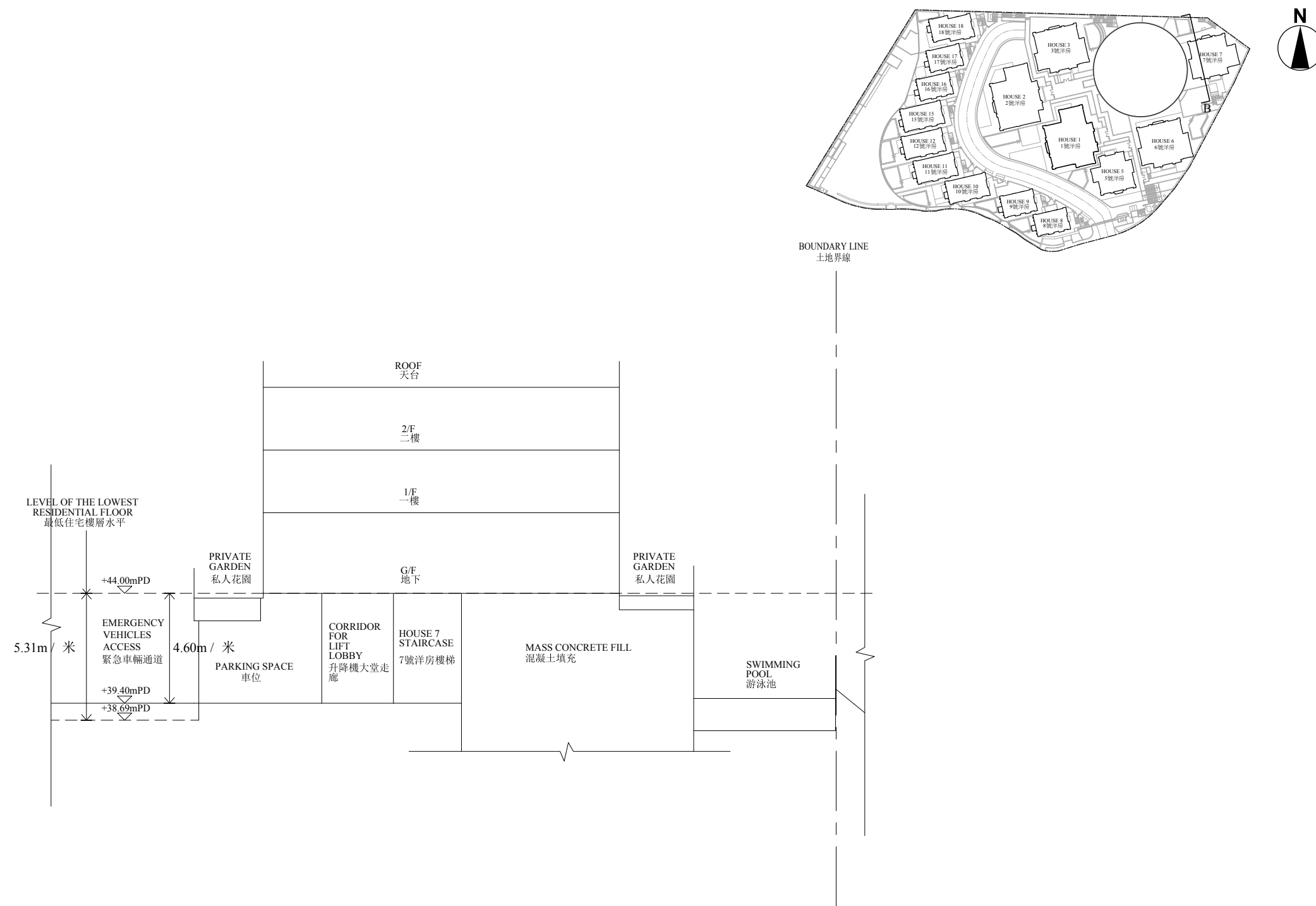
7 號洋房截面圖 A
HOUSE 7 SECTION A

----- 虛線為最低住宅樓層水平
Dotted line denotes the level of the lowest residential floor

—— ——— 土地界線
Boundary Line

▽ 香港主水平基準以上高度 (米)
Height in metres above Hong Kong Principal Datum (HKPD)

毗連建築物的一段緊急車輛通道為香港主水平基準以上 39.40 米。
The part of Emergency Vehicular Access adjacent to the building is 39.40 metres above the Hong Kong Principal Datum.

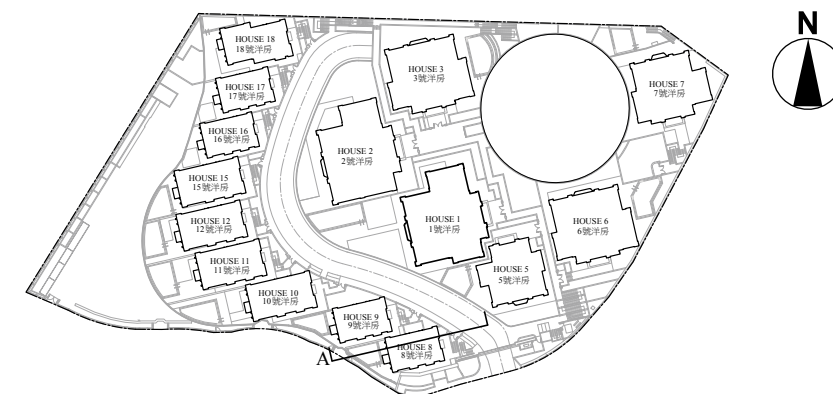
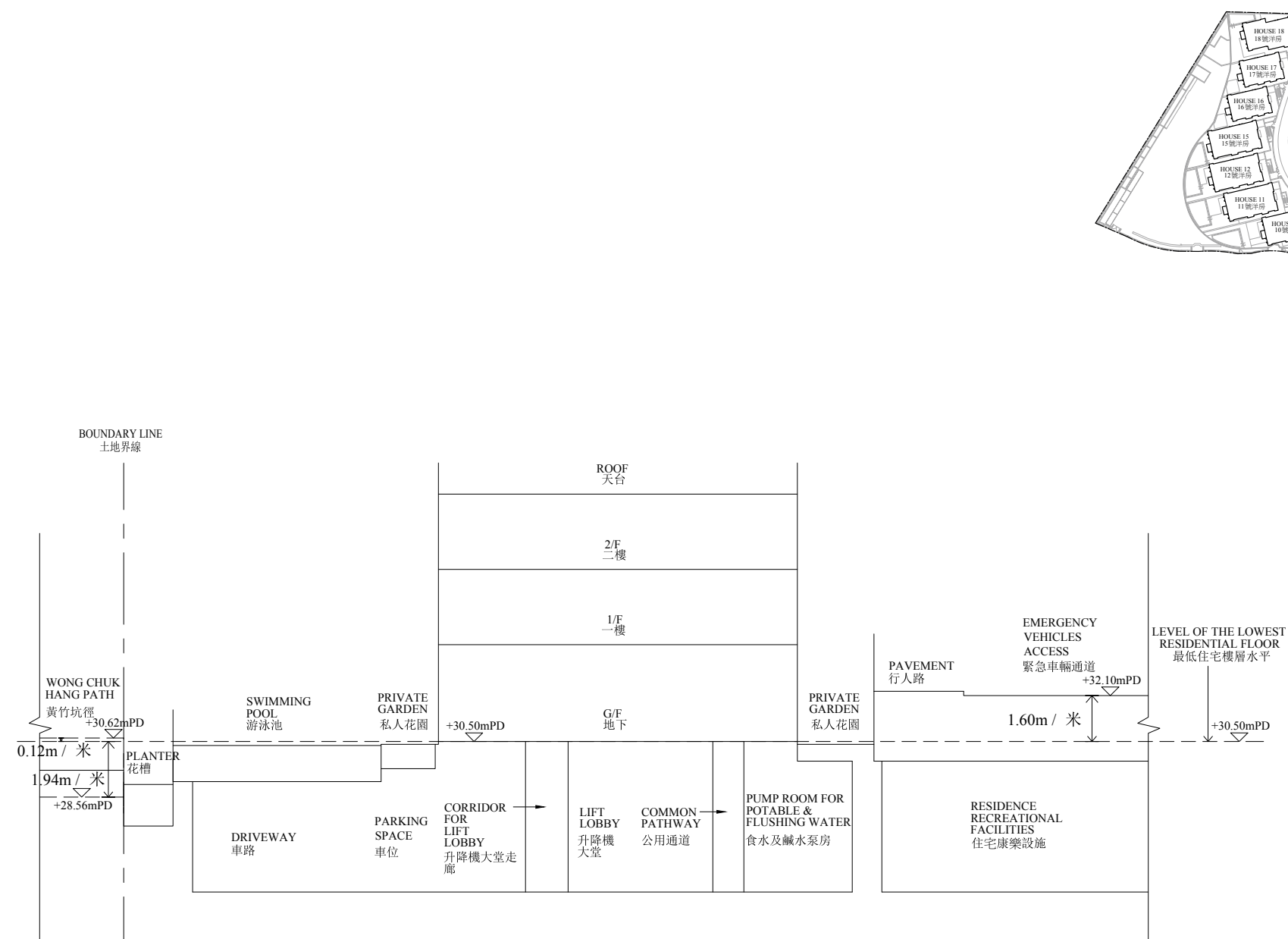
7 號洋房截面圖 B
HOUSE 7 SECTION B

----- 虛線為最低住宅樓層水平
Dotted line denotes the level of the lowest residential floor

—— ——— 土地界線
Boundary Line

▽ 香港主水平基準以上高度（米）
Height in metres above Hong Kong Principal Datum (HKPD)

毗連建築物的一段緊急車輛通道為香港主水平基準以上 38.69 至 39.40 米。
The part of Emergency Vehicular Access adjacent to the building is 38.69 to 39.40 metres above the Hong Kong Principal Datum.

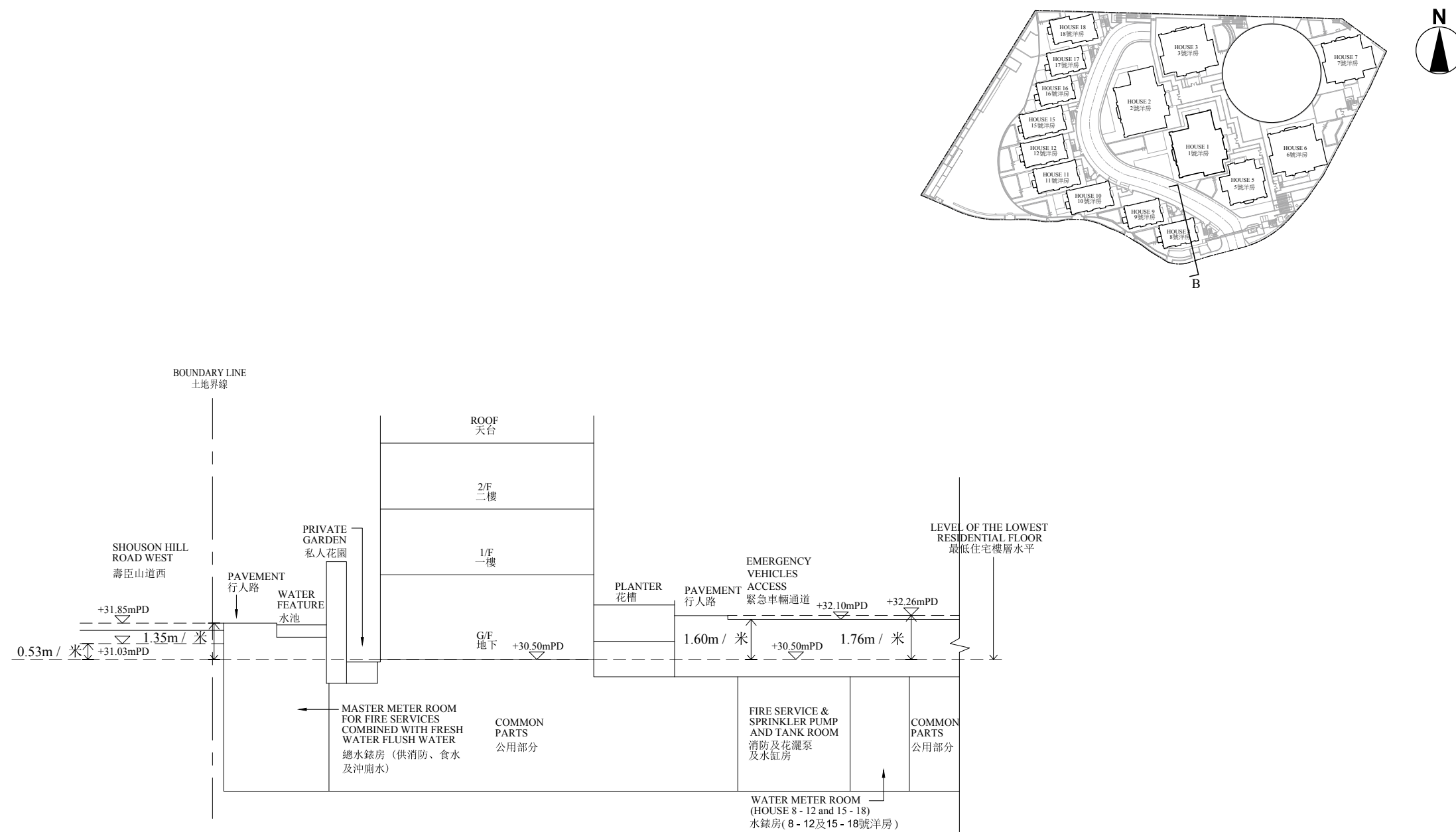
8 號洋房截面圖 A
HOUSE 8 SECTION A

虛線為最低住宅樓層水平
Dotted line denotes the level of the lowest residential floor

—— ———
土地界線
Boundary Line

▽
香港主水平基準以上高度（米）
Height in metres above Hong Kong Principal Datum (HKPD)

毗連建築物的一段緊急車輛通道為香港主水平基準以上 32.10 米。
毗連建築物的一段黃竹坑徑為香港主水平基準以上 28.56 至 30.62 米。
The part of Emergency Vehicular Access adjacent to the building is 32.10 metres above the Hong Kong Principal Datum.
The part of Wong Chuk Hang Path adjacent to the building is 28.56 to 30.62 metres above the Hong Kong Principal Datum.

8 號洋房截面圖 B
HOUSE 8 SECTION B

----- 虛線為最低住宅樓層水平
Dotted line denotes the level of the lowest residential floor

——— 土地界線
Boundary Line

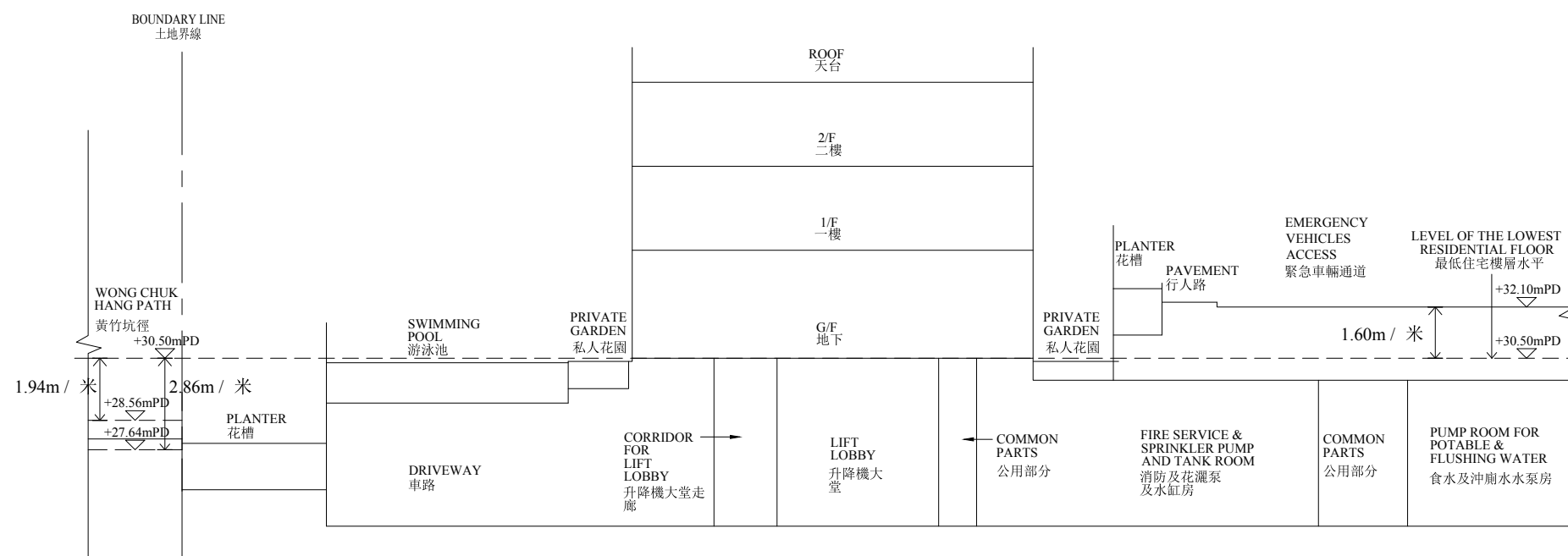
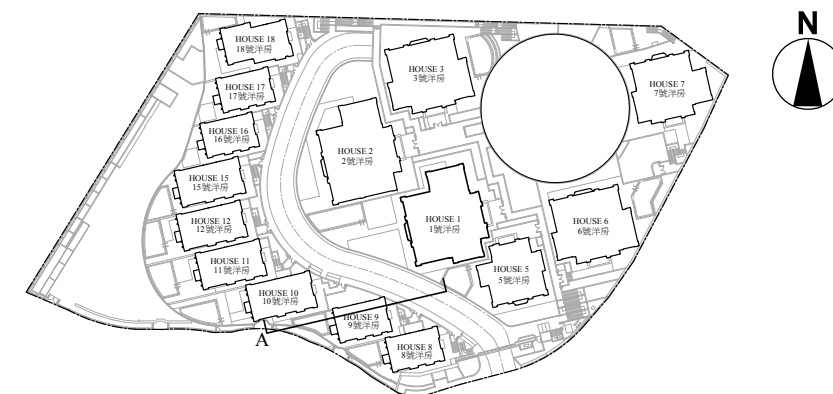
▽ 香港主水平基準以上高度（米）
Height in metres above Hong Kong Principal Datum (HKPD)

毗連建築物的一段緊急車輛通道為香港主水平基準以上 32.10 至 32.26 米。

毗連建築物的一段壽臣山道西為香港主水平基準以上 31.03 至 31.85 米。

The part of Emergency Vehicular Access adjacent to the building is 32.10 to 32.26 metres above the Hong Kong Principal Datum.

The part of Shouson Hill Road West adjacent to the building is 31.03 to 31.85 metres above the Hong Kong Principal Datum.

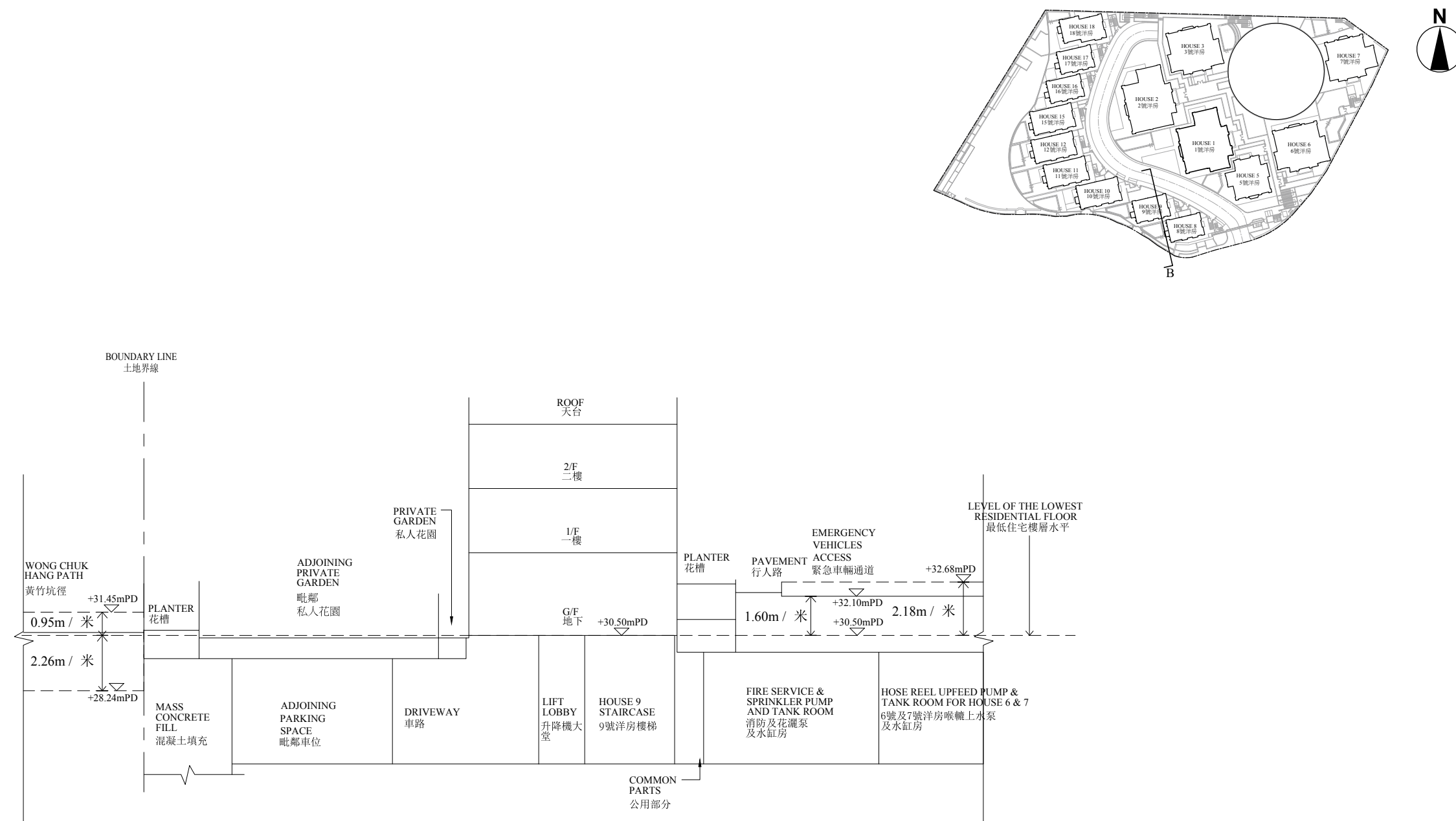
9 號洋房截面圖 A
HOUSE 9 SECTION A

----- 虛線為最低住宅樓層水平
Dotted line denotes the level of the lowest residential floor

——— 土地界線
Boundary Line

▽ 香港主水平基準以上高度（米）
Height in metres above Hong Kong Principal Datum (HKPD)

毗連建築物的一段緊急車輛通道為香港主水平基準以上 32.10 米。
毗連建築物的一段黃竹坑徑為香港主水平基準以上 27.64 至 28.56 米。
The part of Emergency Vehicular Access adjacent to the building is 32.10 metres above the Hong Kong Principal Datum.
The part of Wong Chuk Hang Path adjacent to the building is 27.64 to 28.56 metres above the Hong Kong Principal Datum.

9 號洋房截面圖 B
HOUSE 9 SECTION B

----- 虛線為最低住宅樓層水平
Dotted line denotes the level of the lowest residential floor

——— 土地界線
Boundary Line

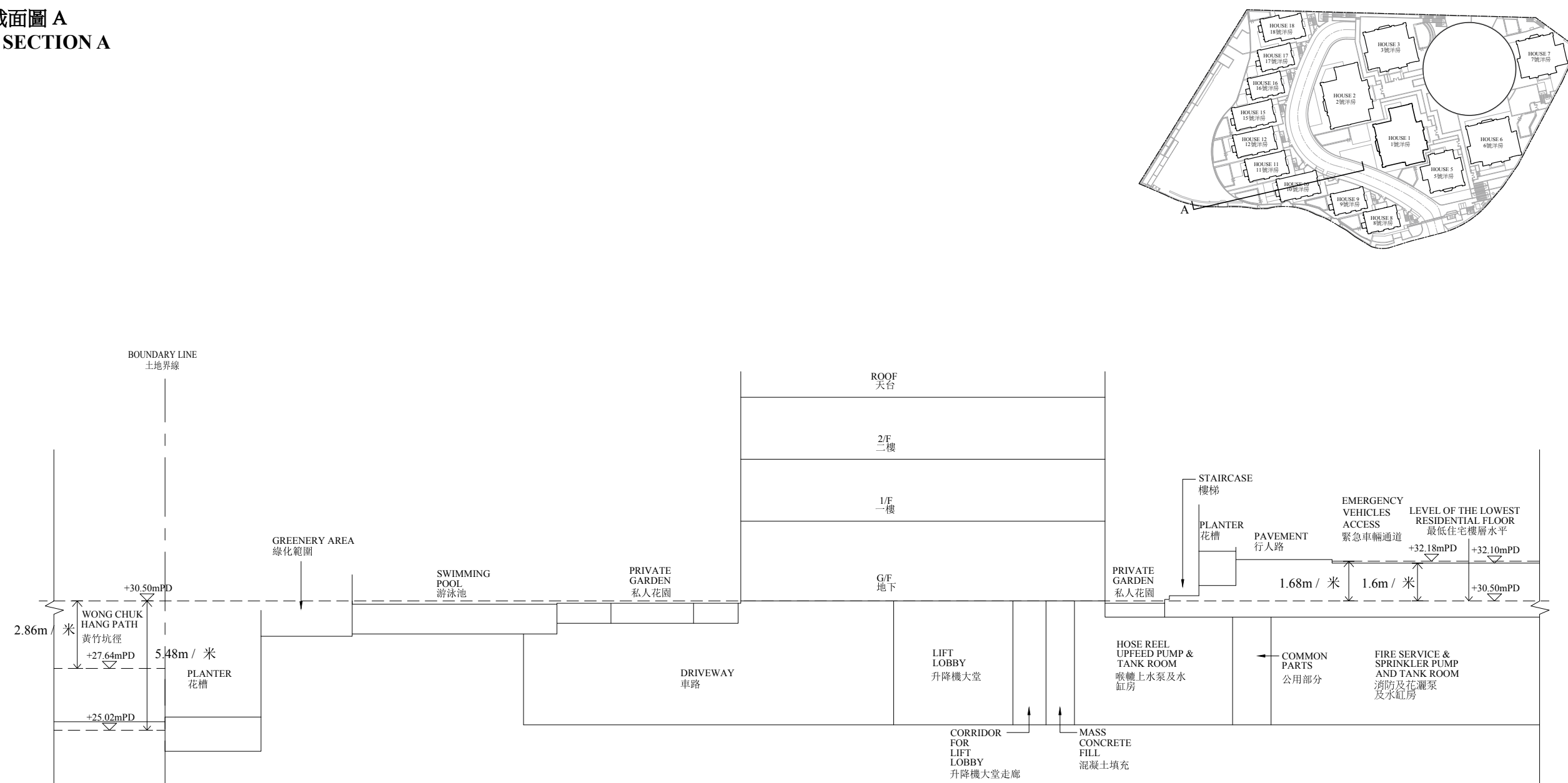
▽ 香港主水平基準以上高度 (米)
Height in metres above Hong Kong Principal Datum (HKPD)

毗連建築物的一段緊急車輛通道為香港主水平基準以上 32.10 至 32.68 米。

毗連建築物的一段黃竹坑徑為香港主水平基準以上 28.24 至 31.45 米。

The part of Emergency Vehicular Access adjacent to the building is 32.10 to 32.68 metres above the Hong Kong Principal Datum.

The part of Wong Chuk Hang Path adjacent to the building is 28.24 to 31.45 metres above the Hong Kong Principal Datum.

10 號洋房截面圖 A
HOUSE 10 SECTION A

----- 虛線為最低住宅樓層水平
Dotted line denotes the level of the lowest residential floor

—— ——— 土地界線
Boundary Line

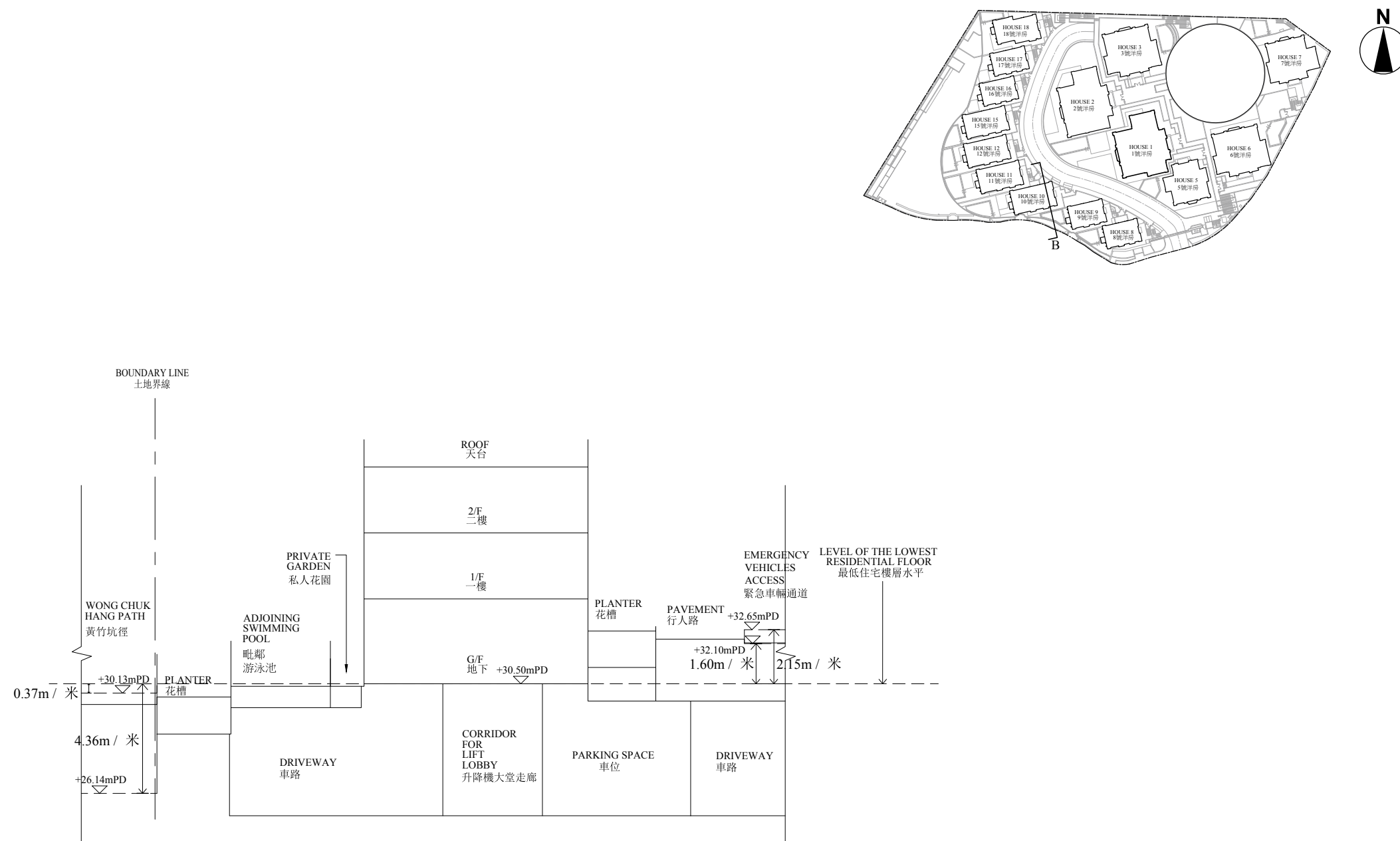
▽ 香港主水平基準以上高度 (米)
Height in metres above Hong Kong Principal Datum (HKPD)

毗連建築物的一段緊急車輛通道為香港主水平基準以上 32.10 至 32.18 米。

毗連建築物的一段黃竹坑徑為香港主水平基準以上 25.02 至 27.64 米。

The part of Emergency Vehicular Access adjacent to the building is 32.10 to 32.18 metres above the Hong Kong Principal Datum.

The part of Wong Chuk Hang Path adjacent to the building is 25.02 to 27.64 metres above the Hong Kong Principal Datum.

10 號洋房截面圖 B
HOUSE 10 SECTION B

----- 虛線為最低住宅樓層水平
Dotted line denotes the level of the lowest residential floor

—— ——— 土地界線
Boundary Line

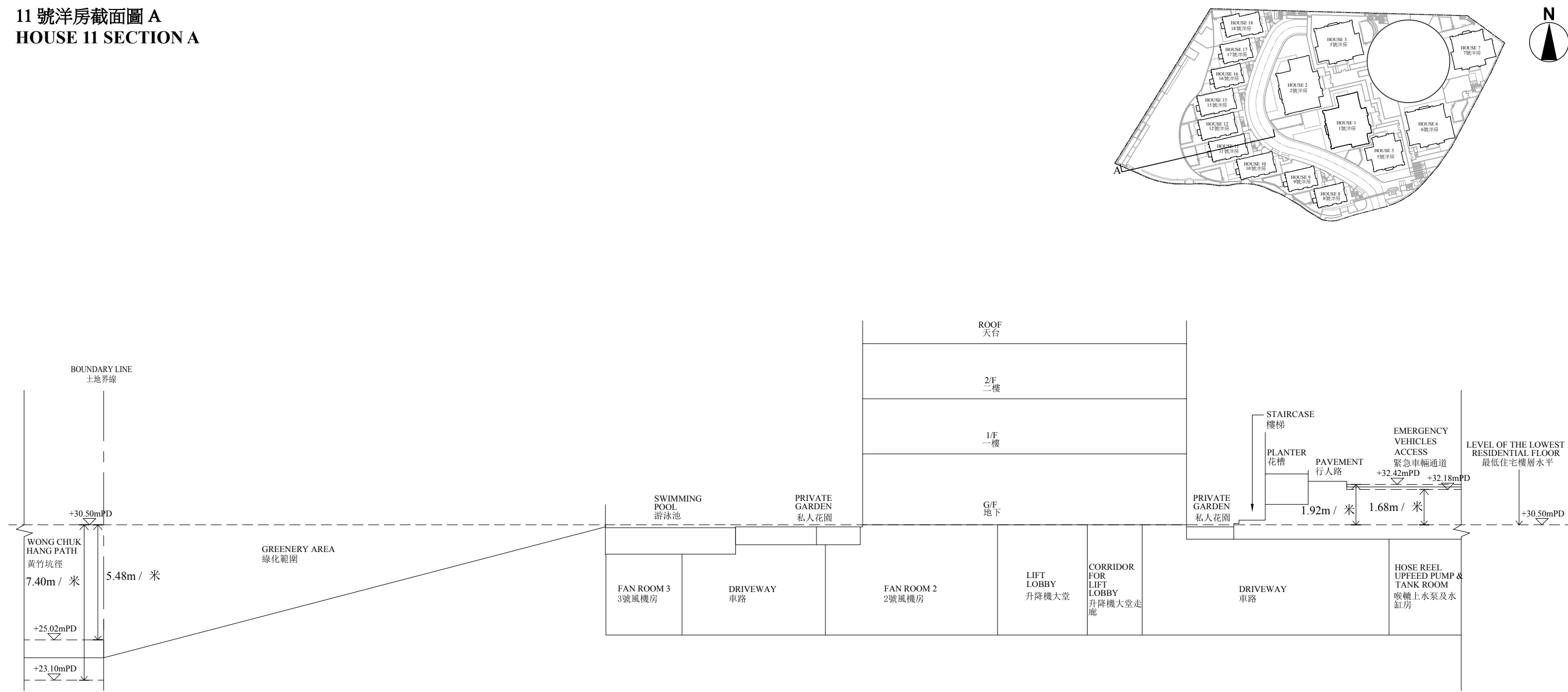
▽ 香港主水平基準以上高度 (米)
Height in metres above Hong Kong Principal Datum (HKPD)

毗連建築物的一段緊急車輛通道為香港主水平基準以上 32.10 至 32.65 米。

毗連建築物的一段黃竹坑徑為香港主水平基準以上 26.14 至 30.13 米。

The part of Emergency Vehicular Access adjacent to the building is 32.10 to 32.65 metres above the Hong Kong Principal Datum.

The part of Wong Chuk Hang Path adjacent to the building is 26.14 to 30.13 metres above the Hong Kong Principal Datum.

11 號洋房截面圖 A
HOUSE 11 SECTION A

----- 虛線為最低住宅樓層水平
Dotted line denotes the level of the lowest residential floor

——— 土地界線
Boundary Line

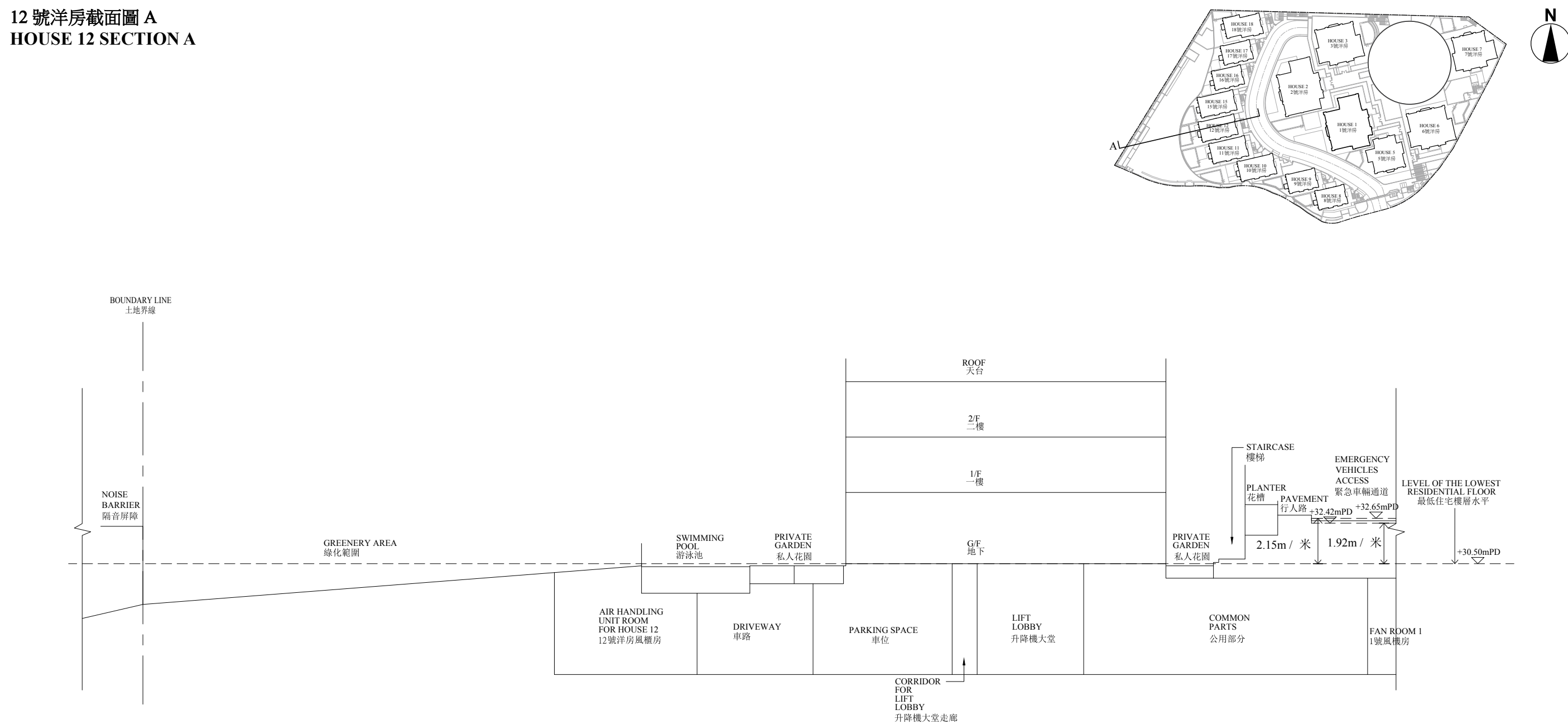
▽ 香港主水平基準以上高度 (米)
Height in metres above Hong Kong Principal Datum (HKPD)

毗連建築物的一段緊急車輛通道為香港主水平基準以上 32.18 至 32.42 米。

毗連建築物的一段黃竹坑徑為香港主水平基準以上 23.10 至 25.02 米。

The part of Emergency Vehicular Access adjacent to the building is 32.18 to 32.42 metres above the Hong Kong Principal Datum.

The part of Wong Chuk Hang Path adjacent to the building is 23.10 to 25.02 metres above the Hong Kong Principal Datum.

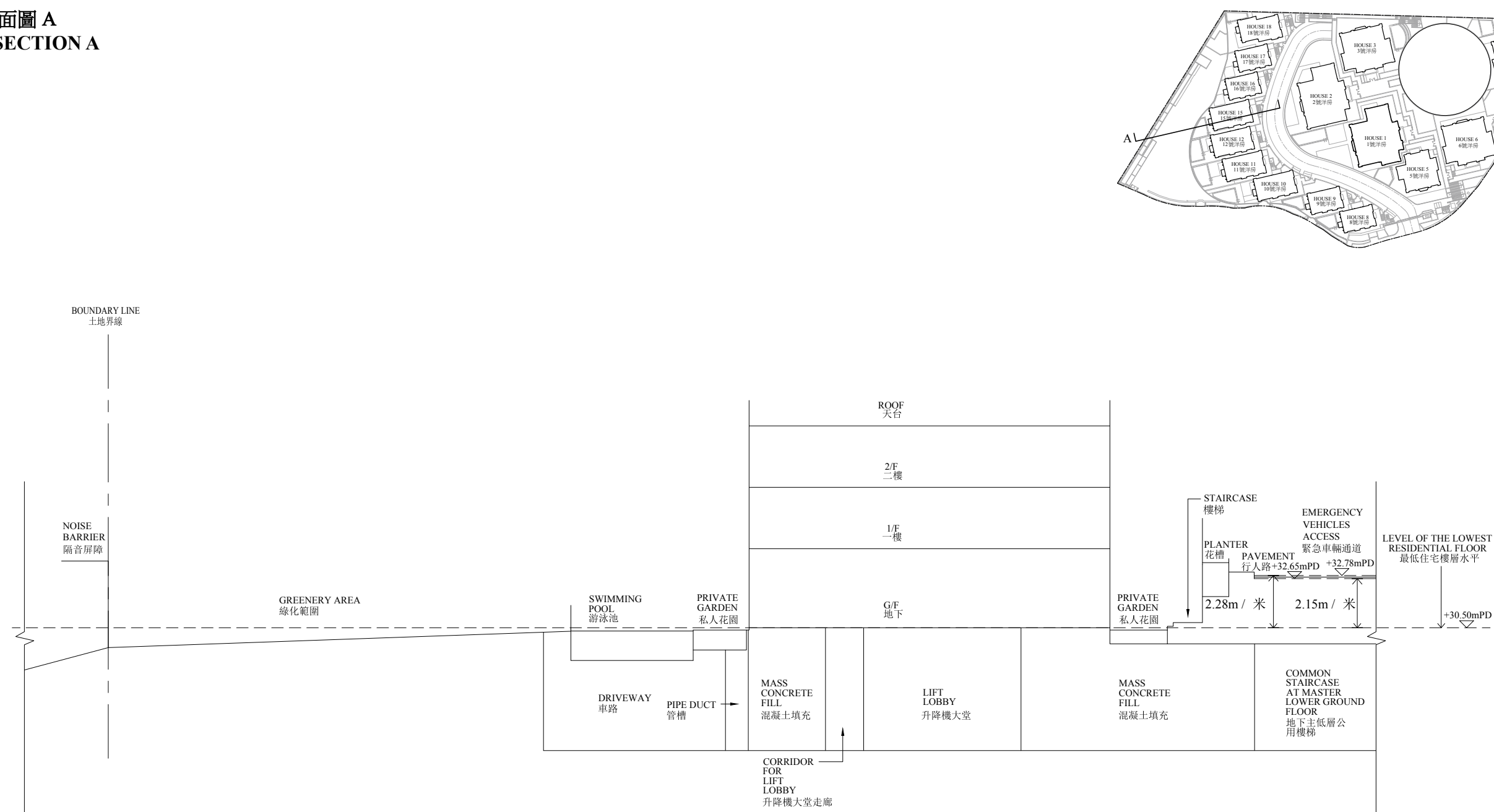
12 號洋房截面圖 A
HOUSE 12 SECTION A

----- 虛線為最低住宅樓層水平
Dotted line denotes the level of the lowest residential floor

——— 土地界線
Boundary Line

▽ 香港主水平基準以上高度 (米)
Height in metres above Hong Kong Principal Datum (HKPD)

毗連建築物的一段緊急車輛通道為香港主水平基準以上 32.42 至 32.65 米。
The part of Emergency Vehicular Access adjacent to the building is 32.42 to 32.65 metres above the Hong Kong Principal Datum.

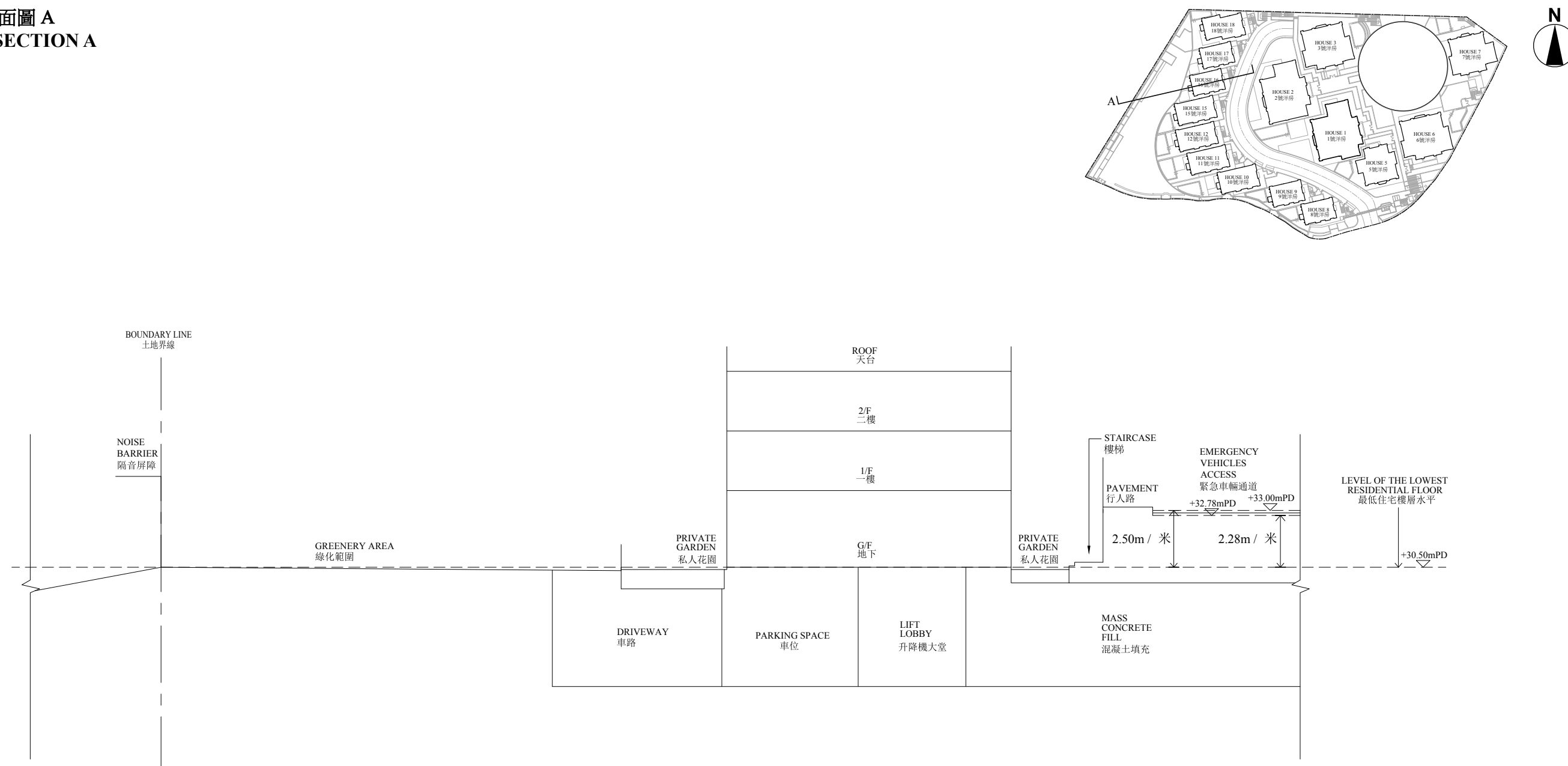
15 號洋房截面圖 A
HOUSE 15 SECTION A

----- 虛線為最低住宅樓層水平
Dotted line denotes the level of the lowest residential floor

—— ——— 土地界線
Boundary Line

▽ 香港主水平基準以上高度 (米)
Height in metres above Hong Kong Principal Datum (HKPD)

毗連建築物的一段緊急車輛通道為香港主水平基準以上 32.65 至 32.78 米。
The part of Emergency Vehicular Access adjacent to the building is 32.65 to 32.78 metres above the Hong Kong Principal Datum.

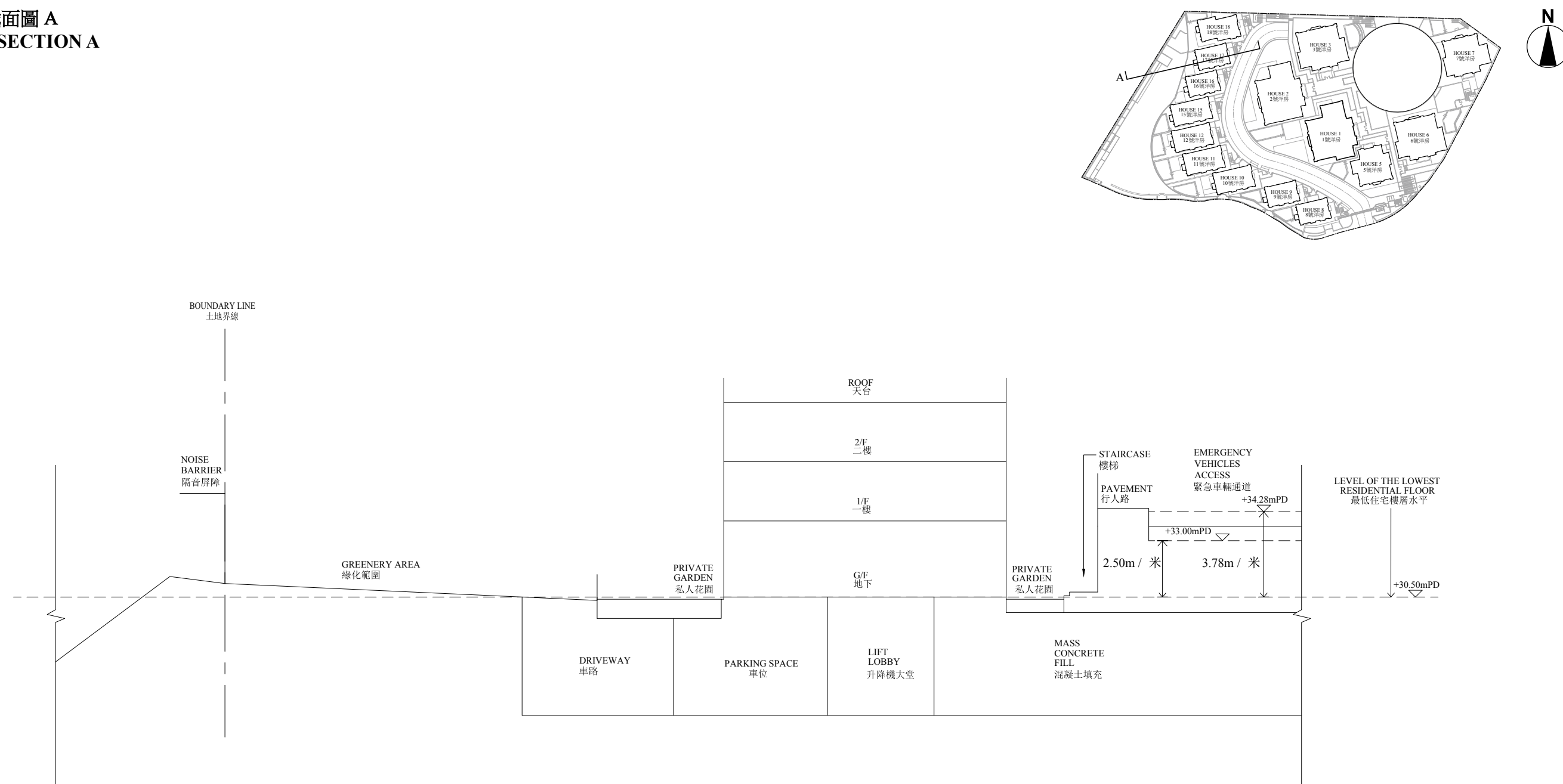
16 號洋房截面圖 A
HOUSE 16 SECTION A

----- 虛線為最低住宅樓層水平
Dotted line denotes the level of the lowest residential floor

—— ——— 土地界線
Boundary Line

▽ 香港主水平基準以上高度（米）
Height in metres above Hong Kong Principal Datum (HKPD)

毗連建築物的一段緊急車輛通道為香港主水平基準以上 32.78 至 33.00 米。
The part of Emergency Vehicular Access adjacent to the building is 32.78 to 33.00 metres above the Hong Kong Principal Datum.

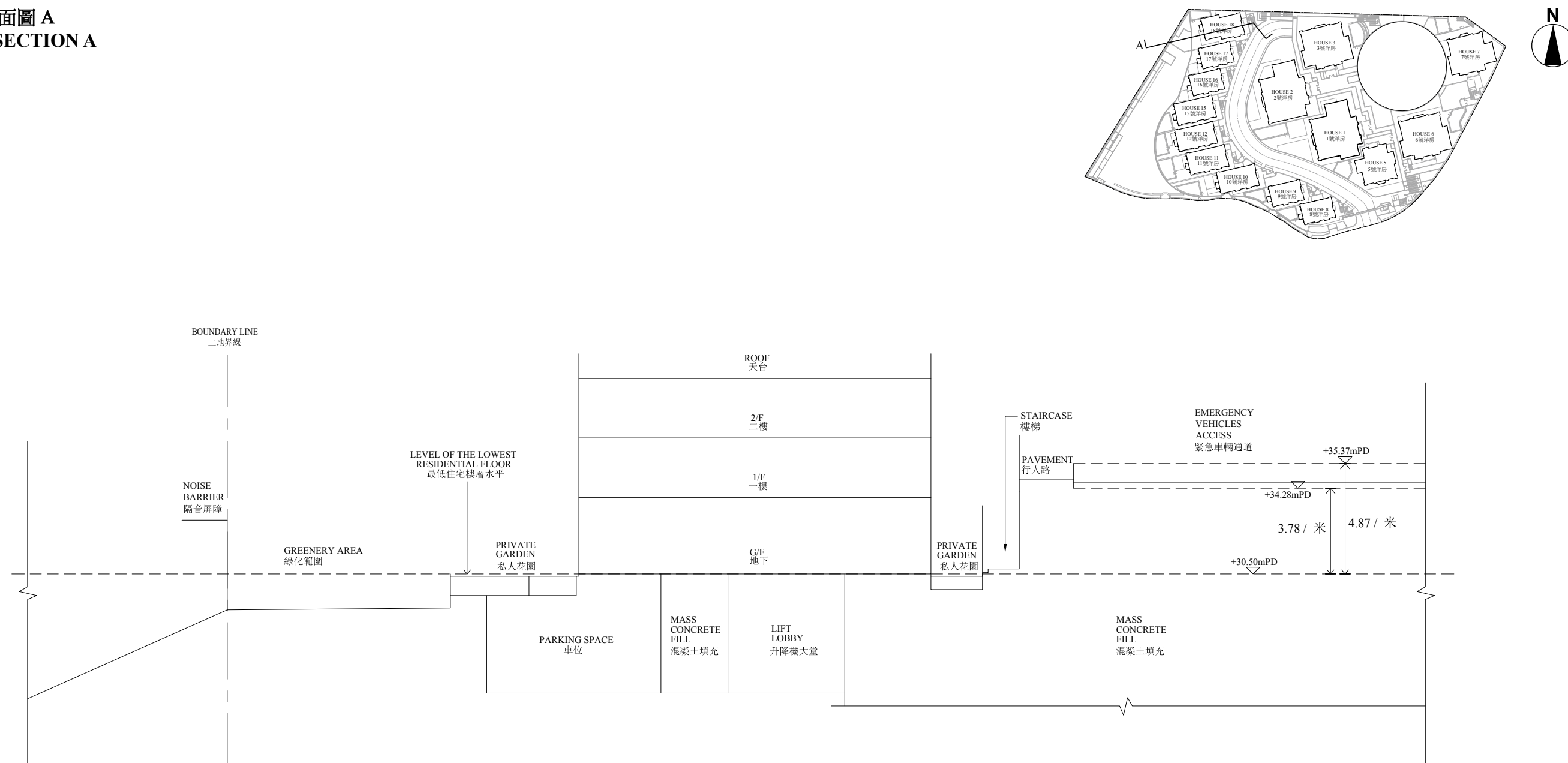
17 號洋房截面圖 A
HOUSE 17 SECTION A

----- 虛線為最低住宅樓層水平
Dotted line denotes the level of the lowest residential floor

—— ——— 土地界線
Boundary Line

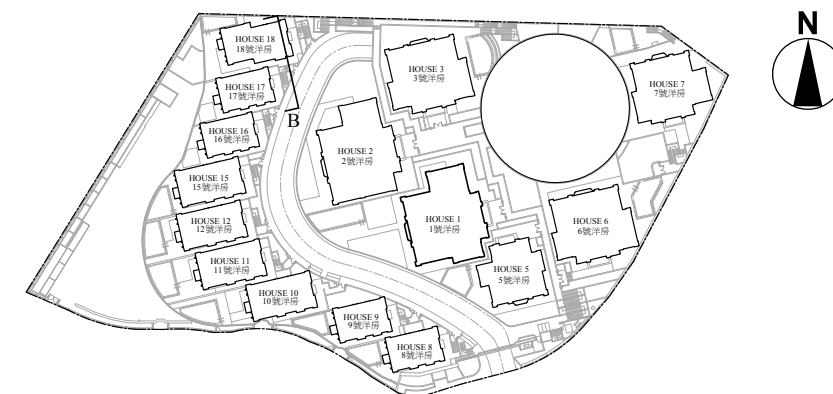
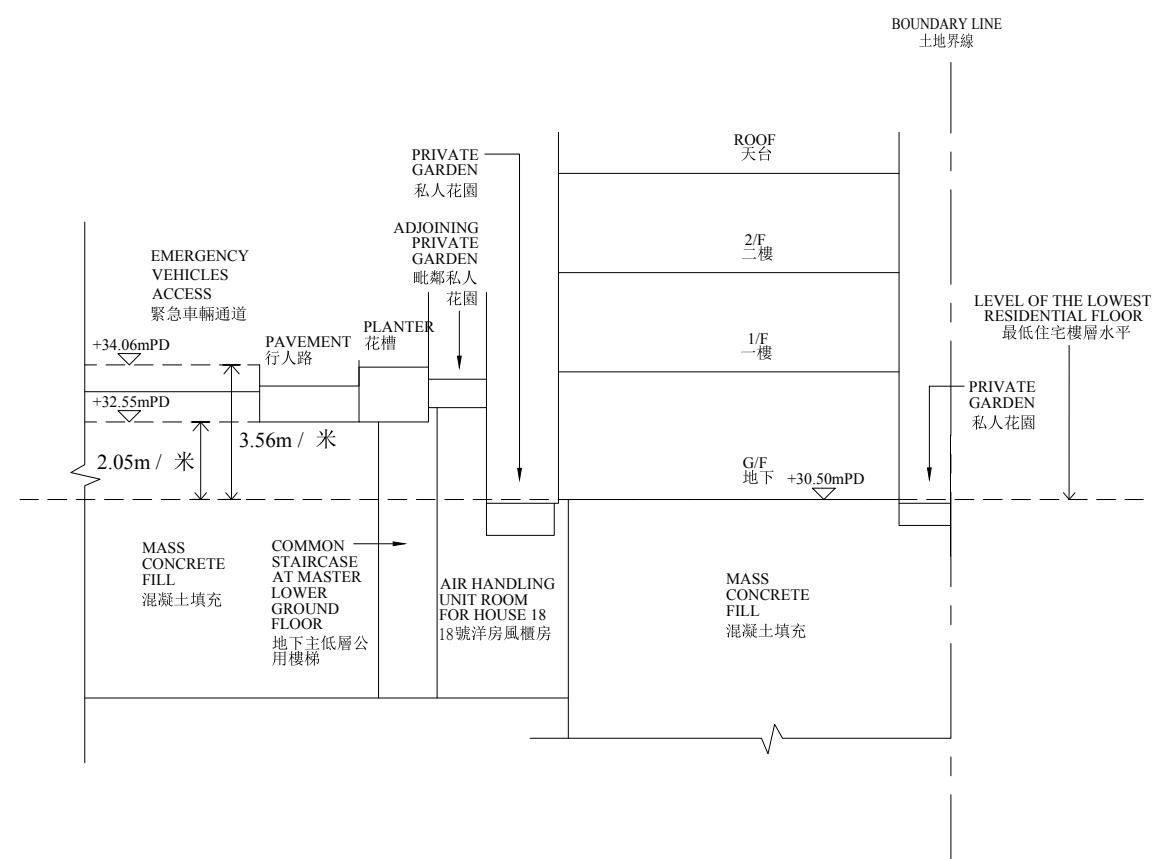
▽ 香港主水平基準以上高度 (米)
Height in metres above Hong Kong Principal Datum (HKPD)

毗連建築物的一段緊急車輛通道為香港主水平基準以上 33.00 至 34.28 米。
The part of Emergency Vehicular Access adjacent to the building is 33.00 to 34.28 metres above the Hong Kong Principal Datum.

18 號洋房截面圖 A
HOUSE 18 SECTION A

- 虛線為最低住宅樓層水平
Dotted line denotes the level of the lowest residential floor
- ——— 土地界線
Boundary Line
- ▽ 香港主水平基準以上高度（米）
Height in metres above Hong Kong Principal Datum (HKPD)

毗連建築物的一段緊急車輛通道為香港主水平基準以上 34.28 至 35.37 米。
The part of Emergency Vehicular Access adjacent to the building is 34.28 to 35.37 metres above the Hong Kong Principal Datum.

18 號洋房截面圖 B
HOUSE 18 SECTION B

----- 虛線為最低住宅樓層水平
Dotted line denotes the level of the lowest residential floor

—— ——— 土地界線
Boundary Line

▽ 香港主水平基準以上高度（米）
Height in metres above Hong Kong Principal Datum (HKPD)

毗連建築物的一段緊急車輛通道為香港主水平基準以上 32.55 至 34.06 米。
The part of Emergency Vehicular Access adjacent to the building is 32.55 to 34.06 metres above the Hong Kong Principal Datum.