

LEGEND OF TERMS AND ABBREVIATIONS USED ON FLOOR PLANS

樓面平面圖中所使用名詞及簡稱之圖例

A/C = Air-conditioner Platform = 冷氣機平台

A.D. = Air Duct = 通風槽

A.F. = Architectural Feature = 建築裝飾

A.F. AT H./L. = Architectural Feature at high level = 建築裝飾在高位

A.F. AT TRANSFER PLATE = Architectural Feature at Transfer Plate = 建築裝飾於結構轉換層

A.F. FOR VENT PIPE = Architectural Feature for Vent Pipe = 通氣喉之建築裝飾

BAL. = Balcony = 露台

BAL. COVER = Balcony cover = 露台頂蓋

BATH = Bathroom = 浴室

B.R. = Bedroom = 睡房

B.R.1 = Bedroom 1 = 睡房 1

B.R.2 = Bedroom 2 = 睡房 2

B.R.3 = Bedroom 3 = 睡房 3

DIN. = Dining Room = 飯廳

DN = Down = 落

E.D. = Electrical Duct = 電管槽

ELV = Extra Low Voltage Room = 弱電房

E.M.R = Electrical Meter Room = 電錶房

FLAT ROOF AT TRANSFER PLATE = FLAT ROOF AT TRANSFER PLATE LEVEL = 平台於結構轉換層

FLUSHING WATER PUMP ROOM (DOMESTIC) = 沖洗水泵房(家用)

Remarks:

1. There may be architectural features and/or exposed common pipes on external walls of some floors.
2. There may be communal pipes and/or mechanical and electrical services within balconies, utility platforms, air-conditioner platforms and roofs of some residential units.
3. Some residential units have ceiling bulkheads and/or sunken slab at living/dining room, bedrooms, bathrooms, corridor and kitchen for air-conditioning system and/or other mechanical and electrical services.
4. Symbols of fittings and fitments shown on the floor plans, such as sink, water closets, shower, sink counter, etc. are architectural symbols retrieved from the latest approved general building plans and for general indication only.
5. Balconies, utility platforms and air-conditioner platforms are non-enclosed areas.

H.R. = Hose Reel = 消防喉轆

LIFT = 升降機

LIFT LOBBY = 升降機大堂

LIFT MACHINE ROOM = 升降機機房

LIFT OVERRUN = 升降機機廂槽

LIV. = Living Room = 客廳

LIFT VENT = 升降機通風槽

M.B.R. = Master Bedroom = 主人睡房

M.L. AT H/L = Metal Louvre at High Level = 金屬百葉於高位

O.KIT. = Open Kitchen = 開放式廚房

P.D. = Pipe Duct = 管道槽

PRIVATE ROOF = 私人天台

RS & MRR = Refuse Storage and Material Recovery Room = 垃圾及物料回收房

ST-1 = Staircase 1 = 樓梯 1

ST-2 = Staircase 2 = 樓梯 2

UP = 上

U.P. = Utility Platform = 工作平台

U.P. COVER = Utility Platform cover = 工作平台頂蓋

W.M.C. = Water Meter Cabinet = 水錶櫃

備註：

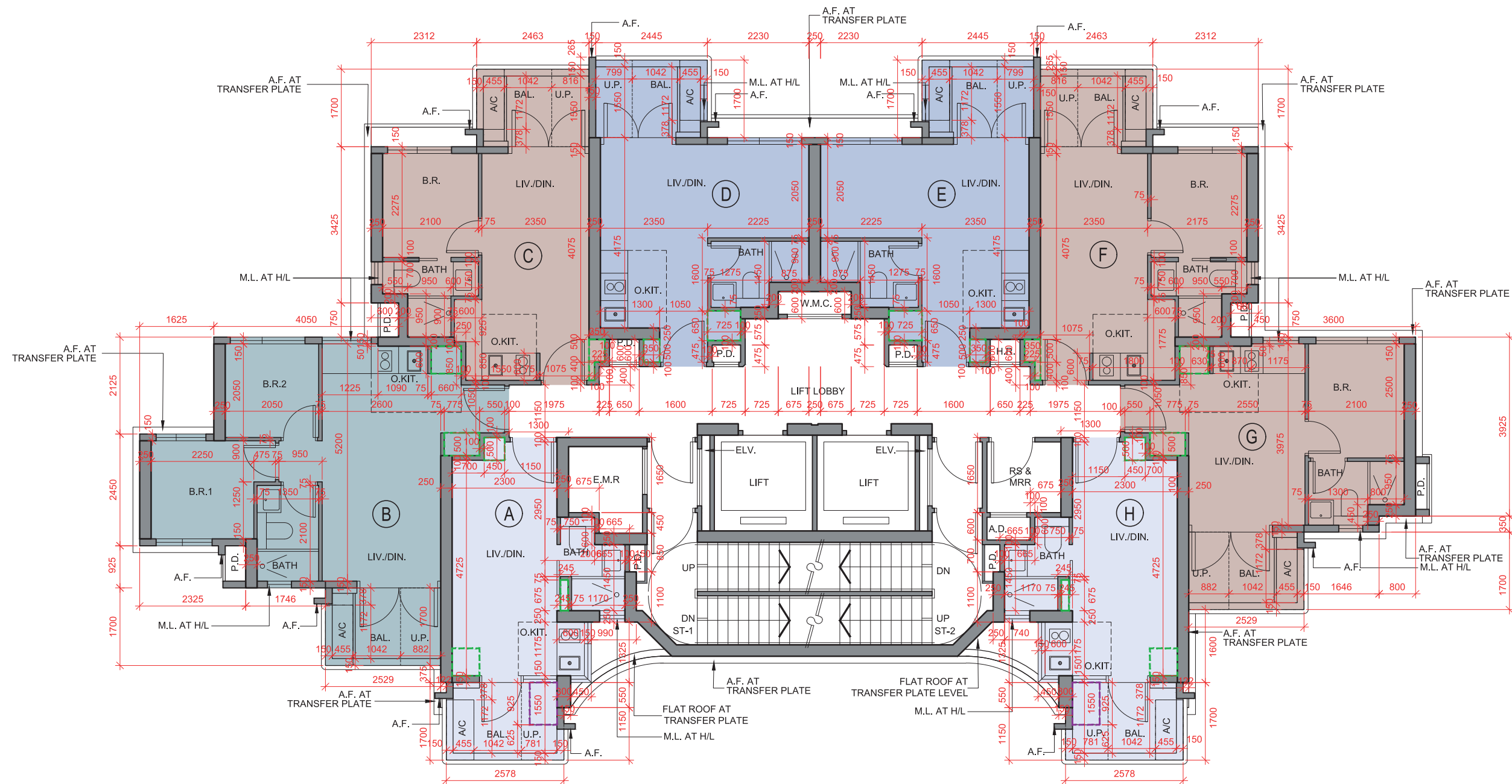
1. 部份樓層外牆或設有建築裝飾及/或外露喉管。
2. 部分住宅單位之露台、工作平台、冷氣機平台及天台內或裝有公用喉管及/或機電設備。
3. 部分住宅單位的客廳/飯廳、睡房、浴室、走廊及廚房之天花有假天花及/或跌級樓板，用以安裝空調及/或其他機電設備。
4. 平面圖上所顯示的形象裝置符號，例如洗滌盆、坐廁、花灑、洗滌盆櫃等乃摘自最新的經批准的建築圖則，只作一般性標誌。
5. 露台、工作平台及冷氣機平台為不可封閉的地方。

11 FLOOR PLANS OF RESIDENTIAL PROPERTIES IN THE DEVELOPMENT

發展項目的住宅物業的樓面平面圖

5/F - 12/F, 15/F - 23/F & 25/F - 26/F

5樓至12樓、15樓至23樓及25樓至26樓



Scale 比例 : 0 1 2 3 4 5M/米

Description of Residential Property 物業描述	Floor 樓層	Units 單位									
		A	B	C	D	E	F	G	H		
The thickness of the floor slabs (excluding plaster) of each residential property (mm) 每個住宅物業的樓板(不包括灰泥)的厚度(毫米)	5/F 5樓	150, 200	150, 175	175	150, 175		175	150, 175	150, 200		
	6/F-12/F, 15/F-23/F & 25/F 6樓至12樓、15樓至23樓及25樓										
	26/F 26樓	150, 250	150		175, 250			150	150, 250		
The floor-to-floor height (refers to the height between the top surface of the structural slab of a floor and the top surface of the structural slab of its immediate upper floor) of each residential property (mm) 每個住宅物業的層與層之間的高度(指該樓層之石屎地台面與上一層石屎地台面之高度距離)(毫米)	5/F 5樓	3500									
	6/F-12/F, 15/F-23/F & 25/F 6樓至12樓、15樓至23樓及25樓	3500									
	26/F 26樓	3500, 3800, 3850	3500, 3750	3500, 3550, 3750, 3800	3500, 3550, 3575, 3750, 3800		3500, 3550, 3750, 3800	3500, 3750	3500, 3800, 3850		

The internal areas of the residential properties on the upper floors will generally be slightly larger than those on the lower floors because of the reducing thickness of the structural walls on the upper floors.
因住宅物業的較高樓層的結構牆的厚度遞減，較高樓層的內部面積，一般比較低樓層的內部面積稍大。

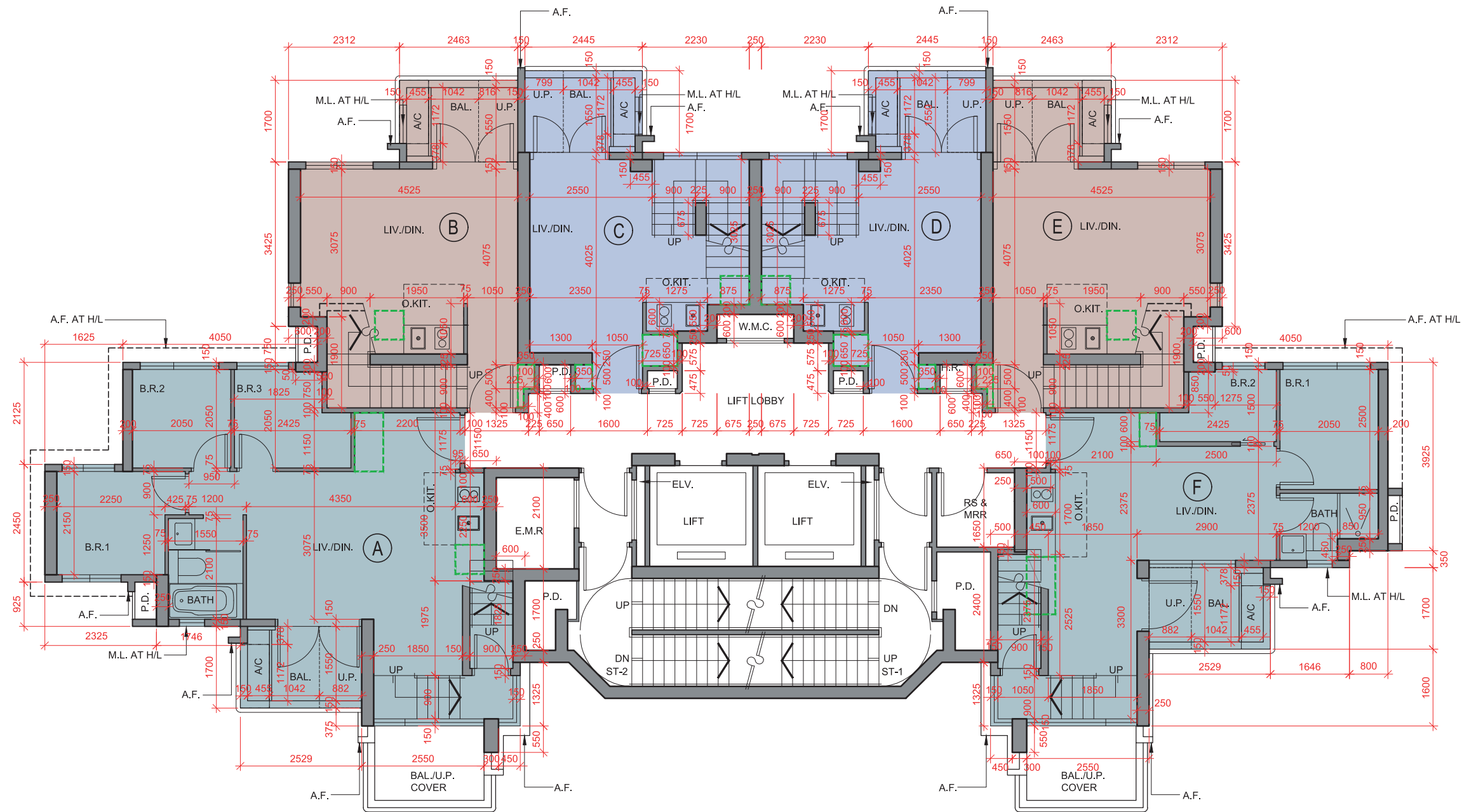
- Notes:
- The dimensions in the floor plans are all structural dimension in millimeter.
 - Please refer to page 21 of this sales brochure for legend of the terms and abbreviations shown in the floor plan above and the explanatory notes that are applicable thereto.
 - There may be architectural features on external walls of some residential properties. For details, please refer to the latest approved building plans.
 - The (- - - -) green dotted line within the unit indicates the approximate location of built-in full height cabinet to be provided with the residential property.
 - The (- - - -) purple dotted line within the unit indicates the approximate location of washer dryer to be provided with the residential property. (Applicable to Unit A & H only. For the location of washer dryer of Unit B, C, D, E, F & G, please refer to the "Fittings, Finishes and Appliances" section of this Sales Brochure.)
 - There will be no grille between the air-conditioner platform and the balcony/utility platform in Unit A and Unit H.

- 備註：
- 樓面平面圖所列之尺寸為以毫米標示之建築結構尺寸。
 - 以上平面圖中顯示之名詞、簡稱及其適用的附註，請參閱本售樓說明書第21頁。
 - 部分住宅物業外牆可能設有建築裝飾。詳情請參考最新批准之建築圖則。
 - 單位內的(- - - -)綠色虛線顯示隨住宅物業提供的嵌入式全高櫃的大約位置。
 - 單位內的(- - - -)紫色虛線顯示隨住宅物業提供的洗衣乾衣機的大約位置。(只適用於A及H單位。B、C、D、E、F及G單位的洗衣乾衣機的位置，請參閱本售樓說明書「裝置、裝修物料及設備」一節。)
 - A單位及H單位的冷氣機平台與露台 / 工作平台之間將不設圍欄。

11 FLOOR PLANS OF RESIDENTIAL PROPERTIES IN THE DEVELOPMENT

發展項目的住宅物業的樓面平面圖

27/F
27樓



Scale 比例 : 0 1 2 3 4 5M/米

Description of Residential Property 物業描述	Floor 樓層	Units 單位					
		A	B	C	D	E	F
The thickness of the floor slabs (excluding plaster) of each residential property (mm) 每個住宅物業的樓板(不包括灰泥)的厚度(毫米)	27/F 27樓	150, 175		150, 175, 250		150, 175	
The floor-to-floor height (refers to the height between the top surface of the structural slab of a floor and the top surface of the structural slab of its immediate upper floor) of each residential property (mm) 每個住宅物業的層與層之間的高度(指該樓層之石屎地台面與上一層石屎地台面之高度距離)(毫米)	27/F 27樓	3500, 3575, 3800	3425, 3500, 3750	3200, 3250, 3425, 3500, 3750		3425, 3500, 3750	3500, 3575, 3750, 3800

The internal areas of the residential properties on the upper floors will generally be slightly larger than those on the lower floors because of the reducing thickness of the structural walls on the upper floors.
因住宅物業的較高樓層的結構牆的厚度遞減，較高樓層的內部面積，一般比較低樓層的內部面積稍大。

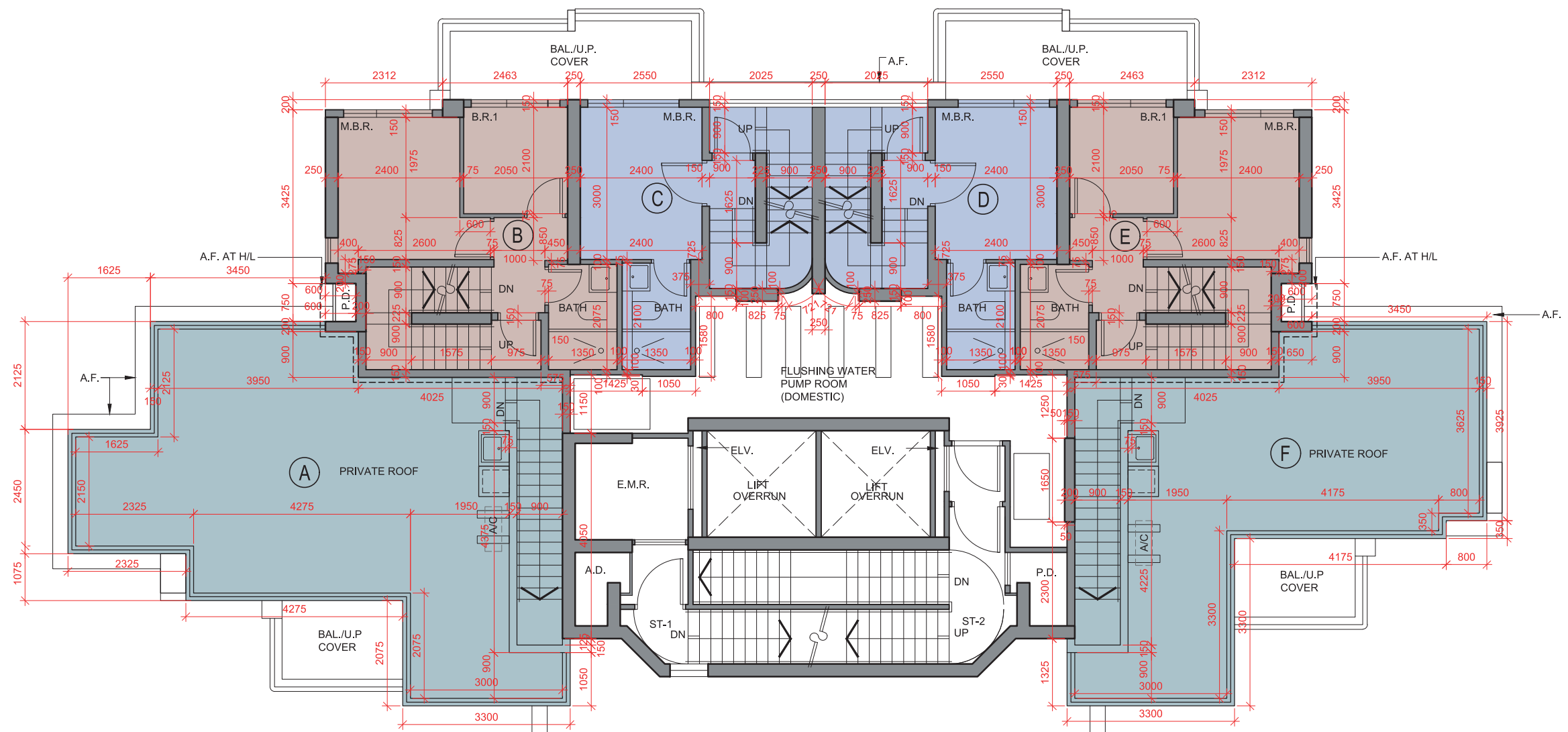
- Notes:
- The dimensions in the floor plans are all structural dimension in millimeter.
 - Please refer to page 21 of this sales brochure for legend of the terms and abbreviations shown in the floor plan above and the explanatory notes that are applicable thereto.
 - There may be architechtrual features on external walls of some residential properties. For details, please refer to the latest approved building plans.
 - The (- - -) green dotted line within the unit indicates the approximate location of built-in full height cabinet to be provided with the residential property.

- 備註：
- 樓面平面圖所列之尺寸為以毫米標示之建築結構尺寸。
 - 以上平面圖中顯示之名詞、簡稱及其適用的附註，請參閱本售樓說明書第21頁。
 - 部分住宅物業外牆可能設有建築裝飾。詳情請參考最新批准之建築圖則。
 - 單位內的(- - -)綠色虛線顯示隨住宅物業提供的嵌入式全高櫃的大約位置。

11 FLOOR PLANS OF RESIDENTIAL PROPERTIES IN THE DEVELOPMENT

發展項目的住宅物業的樓面平面圖

28/F
28樓



Scale 比例 : 0 1 2 3 4 5M/米

Description of Residential Property 物業描述	Floor 樓層	Units 單位					
		A	B	C	D	E	F
The thickness of the floor slabs (excluding plaster) of each residential property (mm) 每個住宅物業的樓板(不包括灰泥)的厚度(毫米)	28/F 28樓	Not Applicable 不適用	150, 175	150, 250, 350		150, 175	Not Applicable 不適用
The floor-to-floor height (refers to the height between the top surface of the structural slab of a floor and the top surface of the structural slab of its immediate upper floor) of each residential property (mm) 每個住宅物業的層與層之間的高度(指該樓層之石屎地台面與上一層石屎地台面之高度距離)(毫米)	28/F 28樓		3500, 3575, 3750, 3800				

The internal areas of the residential properties on the upper floors will generally be slightly larger than those on the lower floors because of the reducing thickness of the structural walls on the upper floors.
因住宅物業的較高樓層的結構牆的厚度遞減，較高樓層的內部面積，一般比較低樓層的內部面積稍大。

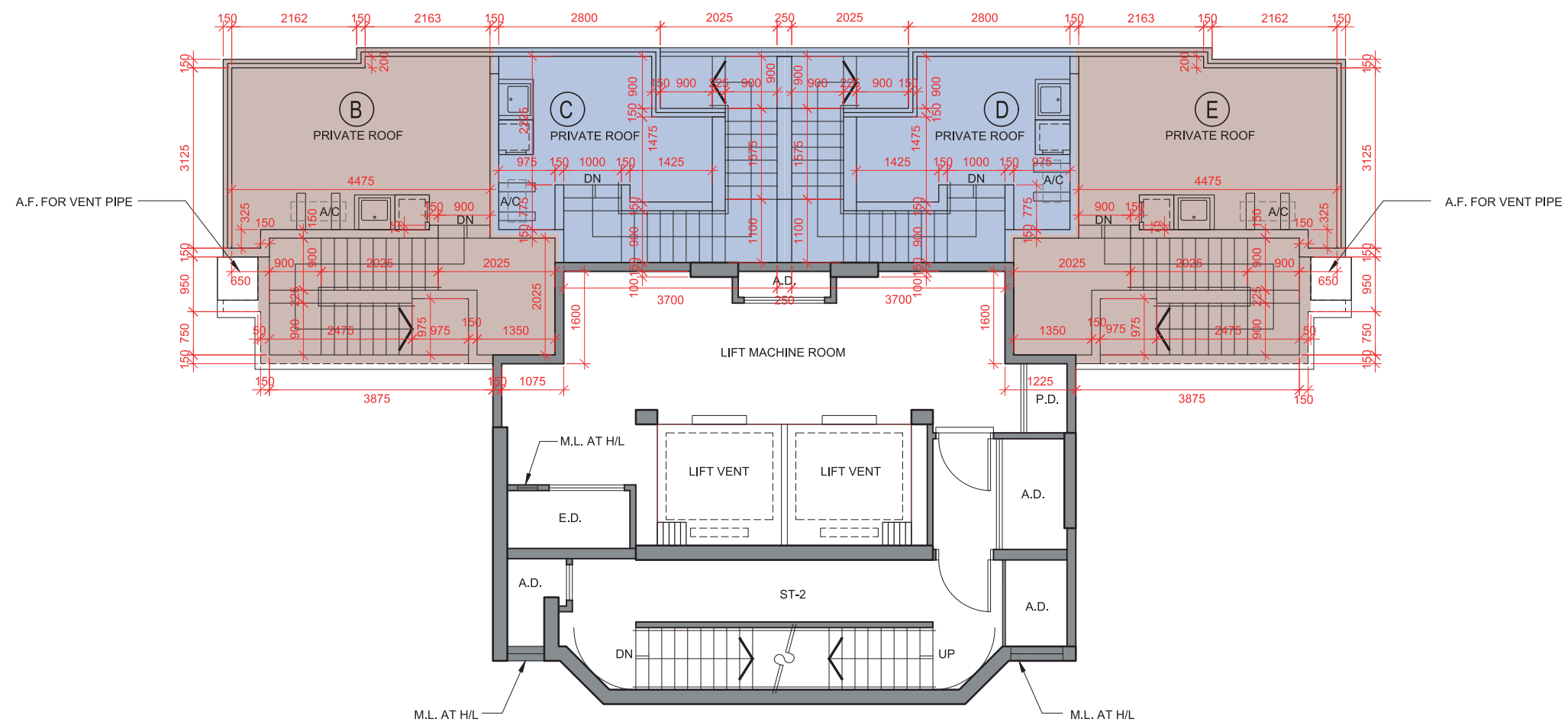
- Notes:
- The dimensions in the floor plans are all structural dimension in millimeter.
 - Please refer to page 21 of this sales brochure for legend of the terms and abbreviations shown in the floor plan above and the explanatory notes that are applicable thereto.
 - There may be architechtrual features on external walls of some residential properties. For details, please refer to the latest approved building plans.

- 備註：
- 樓面平面圖所列之尺寸為以毫米標示之建築結構尺寸。
 - 以上平面圖中顯示之名詞、簡稱及其適用的附註，請參閱本售樓說明書第21頁。
 - 部分住宅物業外牆可能設有建築裝飾。詳情請參考最新批准之建築圖則。

11 FLOOR PLANS OF RESIDENTIAL PROPERTIES IN THE DEVELOPMENT

發展項目的住宅物業的樓面平面圖

Roof Floor
天台



Scale 比例 : 0 1 2 3 4 5M/米

Description of Residential Property 物業描述	Floor 樓層	Units 單位			
		B	C	D	E
The thickness of the floor slabs (excluding plaster) of each residential property (mm) 每個住宅物業的樓板(不包括灰泥)的厚度(毫米)	Roof Floor 天台	Not Applicable 不適用			
The floor-to-floor height (refers to the height between the top surface of the structural slab of a floor and the top surface of the structural slab of its immediate upper floor) of each residential property (mm) 每個住宅物業的層與層之間的高度(指該樓層之石屎地台面與上一層石屎地台面之高度距離)(毫米)		Not Applicable 不適用			

The internal areas of the residential properties on the upper floors will generally be slightly larger than those on the lower floors because of the reducing thickness of the structural walls on the upper floors.
因住宅物業的較高樓層的結構牆的厚度遞減，較高樓層的內部面積，一般比較低樓層的內部面積稍大。

- Notes:
- The dimensions in the floor plans are all structural dimension in millimeter.
 - Please refer to page 21 of this sales brochure for legend of the terms and abbreviations shown in the floor plan above and the explanatory notes that are applicable thereto.
 - There may be architechtrual features on external walls of some residential properties. For details, please refer to the latest approved building plans.

- 備註：
- 樓面平面圖所列之尺寸為以毫米標示之建築結構尺寸。
 - 以上平面圖中顯示之名詞、簡稱及其適用的附註，請參閱本售樓說明書第21頁。
 - 部分住宅物業外牆可能設有建築裝飾。詳情請參考最新批准之建築圖則。