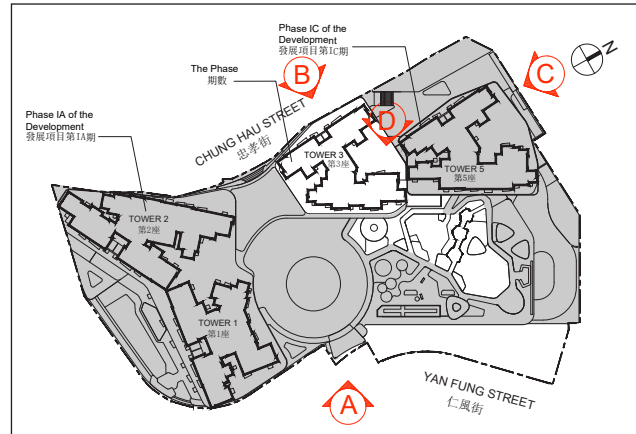


Key Plan 索引圖



Authorized Person for the Phase has certified that the elevations shown on these plans:-

- (1) are prepared on the basis of the approved building plans for the Phase as of 2 August 2024 and the approved phasing plans for the Phase as of 24 April 2024; and
- (2) are in general accordance with the outward appearance of the Phase.

期數的認可人士證明本圖所顯示的立面：

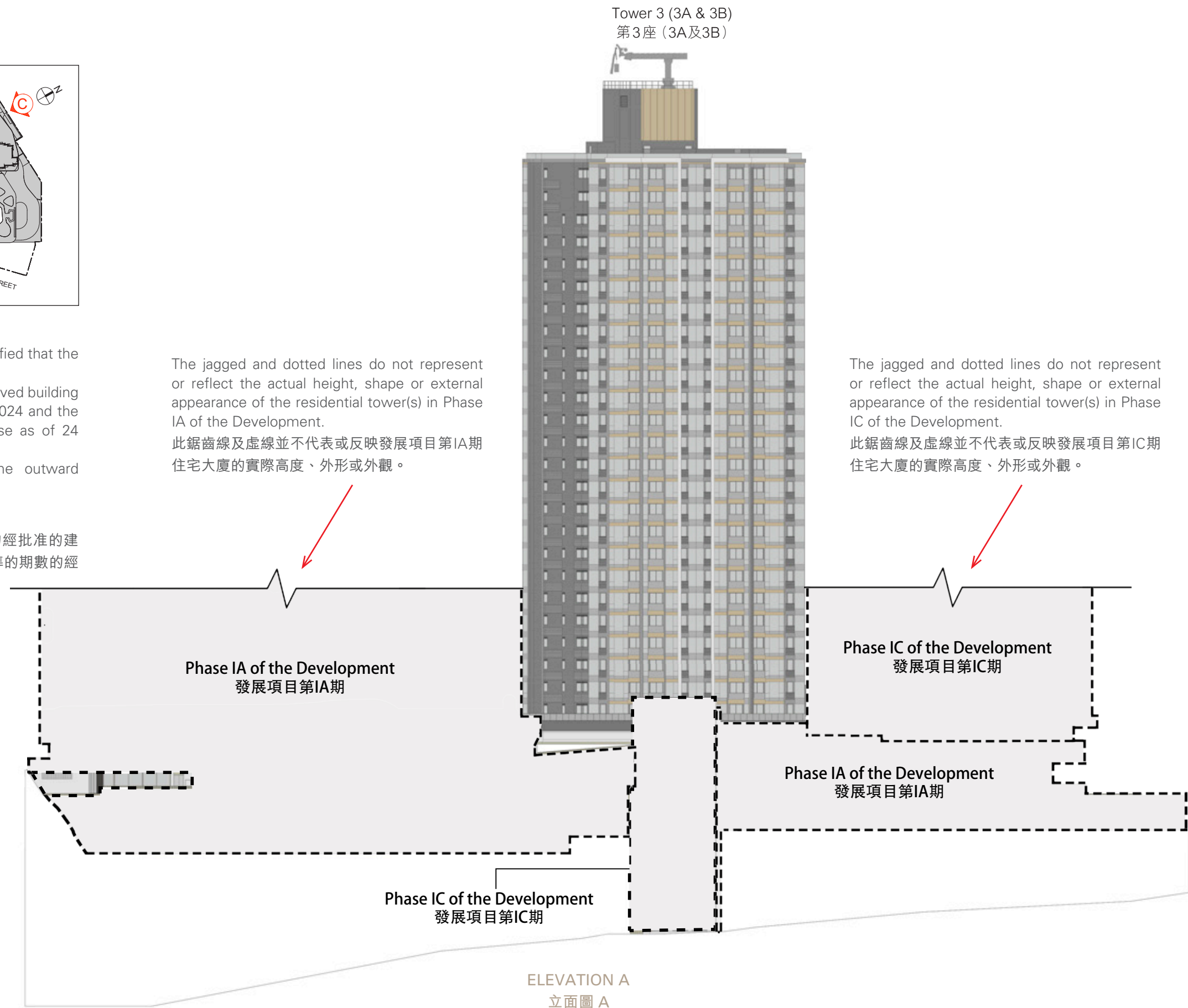
- (1) 以2024年8月2日的情況為準的期數的經批准的建築圖則及以2024年4月24日的情況為準的期數的經批准的期數圖則為基礎擬備；及
- (2) 大致上與期數的外觀一致。

The jagged and dotted lines do not represent or reflect the actual height, shape or external appearance of the residential tower(s) in Phase IA of the Development.

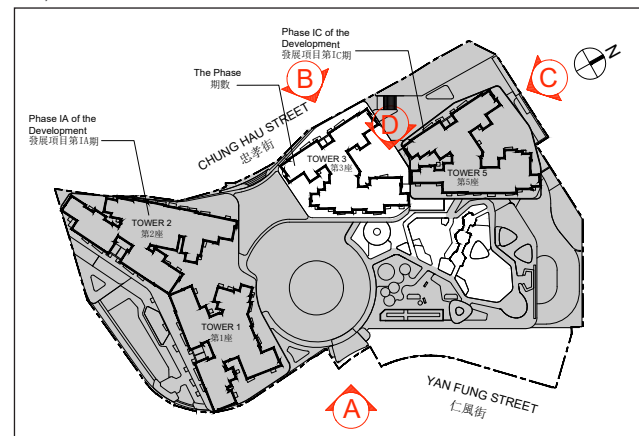
此鋸齒線及虛線並不代表或反映發展項目第IA期住宅大廈的實際高度、外形或外觀。

The jagged and dotted lines do not represent or reflect the actual height, shape or external appearance of the residential tower(s) in Phase IC of the Development.

此鋸齒線及虛線並不代表或反映發展項目第IC期住宅大廈的實際高度、外形或外觀。



Key Plan 索引圖



Authorized Person for the Phase has certified that the elevations shown on these plans:-

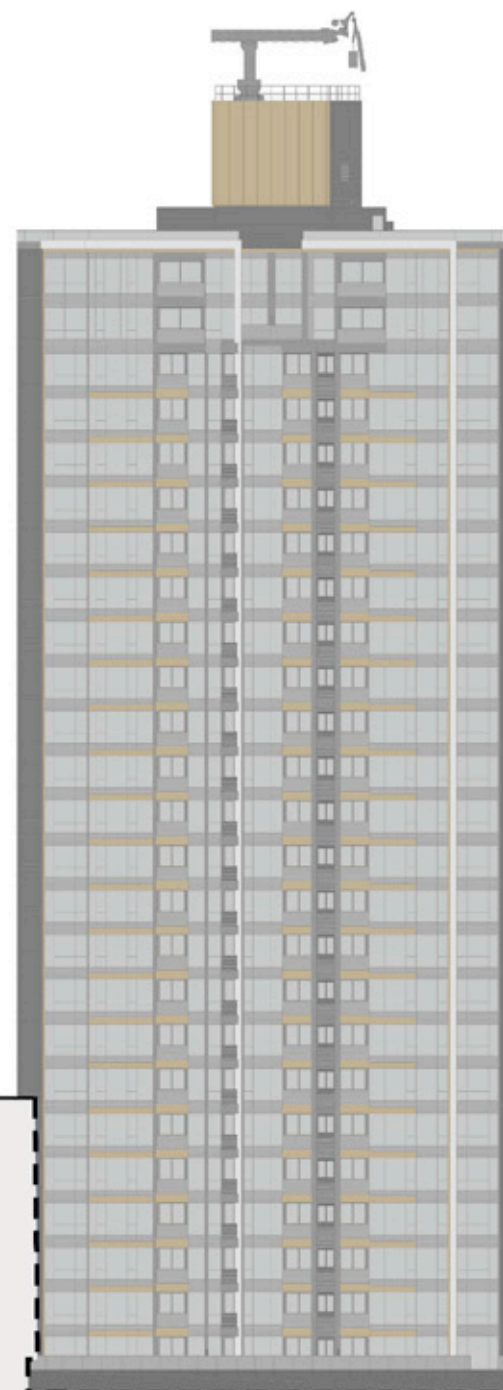
- (1) are prepared on the basis of the approved building plans for the Phase as of 2 August 2024 and the approved phasing plans for the Phase as of 24 April 2024; and
- (2) are in general accordance with the outward appearance of the Phase.

期數的認可人士證明本圖所顯示的立面：

- (1) 以2024年8月2日的情況為準的期數的經批准的建築圖則及以2024年4月24日的情況為準的期數的經批准的期數圖則為基礎擬備；及
- (2) 大致上與期數的外觀一致。

The jagged and dotted lines do not represent or reflect the actual height, shape or external appearance of the residential tower(s) in Phase IC of the Development.
此鋸齒線及虛線並不代表或反映發展項目第IC期住宅大廈的實際高度、外形或外觀。

Tower 3 (3A & 3B)
第3座 (3A及3B)



The jagged and dotted lines do not represent or reflect the actual height, shape or external appearance of the residential tower(s) in Phase IA of the Development.

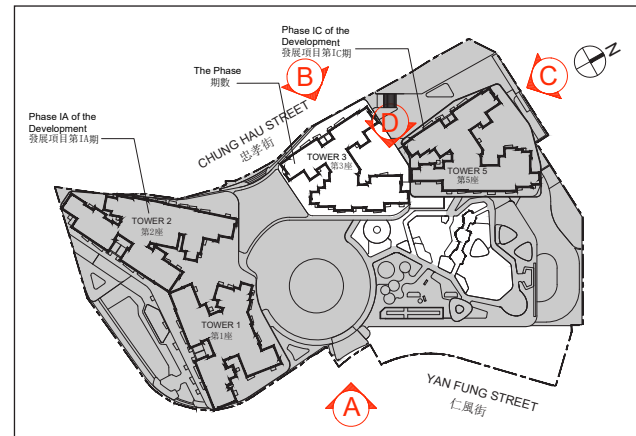
此鋸齒線及虛線並不代表或反映發展項目第IA期住宅大廈的實際高度、外形或外觀。

Phase IC of the Development
發展項目第IC期

Phase IA of the Development
發展項目第IA期

ELEVATION B
立面圖 B

Key Plan 索引圖



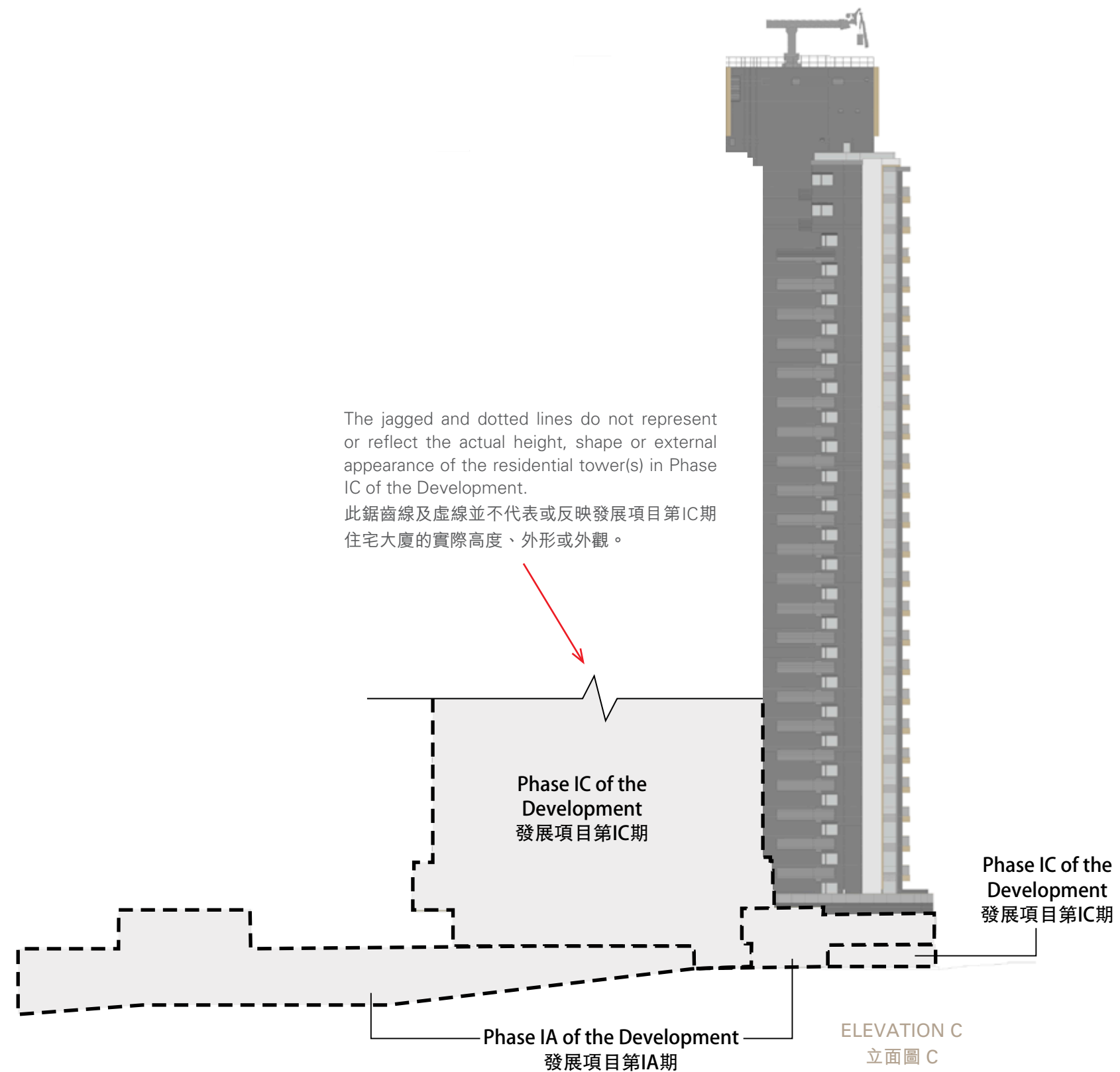
Authorized Person for the Phase has certified that the elevations shown on these plans:-

- (1) are prepared on the basis of the approved building plans for the Phase as of 2 August 2024 and the approved phasing plans for the Phase as of 24 April 2024; and
- (2) are in general accordance with the outward appearance of the Phase.

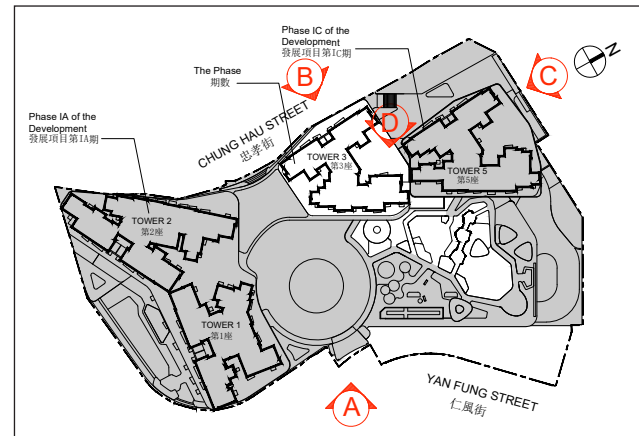
期數的認可人士證明本圖所顯示的立面：

- (1) 以2024年8月2日的情況為準的期數的經批准的建築圖則及以2024年4月24日的情況為準的期數的經批准的期數圖則為基礎擬備；及
- (2) 大致上與期數的外觀一致。

Tower 3 (3A & 3B)
第3座 (3A及3B)



Key Plan 索引圖



Authorized Person for the Phase has certified that the elevations shown on these plans:-

- (1) are prepared on the basis of the approved building plans for the Phase as of 20 November 2023 and the approved phasing plans for the Phase as of 24 April 2024; and
- (2) are in general accordance with the outward appearance of the Phase.

期數的認可人士證明本圖所顯示的立面：

- (1) 以2023年11月20日的情況為準的期數的經批准的建築圖則及以2024年4月24日的情況為準的期數的經批准的期數圖則為基礎擬備；及
- (2) 大致上與期數的外觀一致。

Tower 3 (3A & 3B)
第3座 (3A及3B)



ELEVATION D
立面圖 D