

11 FLOOR PLANS OF RESIDENTIAL PROPERTIES IN THE PHASE 期數的住宅物業的樓面平面圖

Reference of the legend shown on the floor plan: 平面圖上圖例之參考：

A/C P. = Air-conditioning Platform = 冷氣機平台

A/C P. ABOVE. = Air-conditioning Platform above = 冷氣機平台置上

A.D. = Air Duct = 通風槽

A.F. = Architectural Feature = 建築裝飾

A.W. = Acoustic Window (baffle type) = 減音窗戶(擋音式)^

BAL. = Balcony = 露台

BAL.* = Enhanced Acoustic Balcony (baffle type) = 強效減音露台(擋音式)^

BAL. ABOVE = Balcony above = 露台置上

BAL. COVER = Balcony cover = 露台頂蓋

BATH = Bathroom = 浴室

B.R. = Bedroom = 睡房

BUILDING LINE ABOVE = 建築線置上

CAT LADDER = 豎梯

C.D. = Cable Duct = 電管槽

COMMON FLAT ROOF = 公用平台

COMMON ROOF = 公用天台

COMMON GREEN ROOF = 公用綠化平台

DIN. = Dining Room = 飯廳

DN = Down = 落

DOG HOUSE = 喉管罩室

ELV. = Extra Low Voltage Room = 特低壓電房

ELECT. DUCT = Electric Duct = 電管槽

E.M.R. = Electrical Meter Room = 電錶房

FAN ROOM = 風扇房

F.H. = Fire Hydrant = 消防龍頭

FIREMAN'S LIFT LOBBY = 消防員升降機大堂

FLAT = 單位

F.S. Water Tank Room = Fire Services Water Tank Room = 消防水缸房

F.S.P.D. = Fire Service Pipe Duct = 消防管槽

H.R. = Hose Reel = 消防喉轆

KIT. = Kitchen = 廚房

LAV. = Lavatory = 洗手間

LIFT = 升降機

LIFT 'ACC' 'A' = Fireman's and Accessible Lift = 消防員及傷健人士升降機

LIV. = Living Room = 客廳

LOBBY = Lift Lobby = 升降機大堂

L.W. = Light Well = 天井

M. BATH = Master Bathroom = 主人浴室

M.B.R. = Master Bedroom = 主人睡房

M.W. = Fixed Glazing (with or without Maintenance Window) = 固定玻璃窗戶(配有或不配有維修用窗)^

OPEN KIT. = Open Kitchen = 開放式廚房

OVERRUN = Lift Overrun = 升降機機廂槽

POTABLE WATER PUMP ROOM = 食水泵房

P.D. = Pipe Duct = 管道槽

PRIVATE FLAT ROOF = 私人平台

PRIVATE ROOF = 私人天台

RS & MRR = Refuse Storage and Material Recovery Room = 垃圾及物料回收房

ROOF OF STAIRHOOD = 梯屋天台

SINK = 洗滌槽

STORE = Storeroom = 儲物室

T.R.S. = Temporary Refuge Space = 臨時庇護處

TIE BEAM (for 3/F, 6/F, 8/F, 10/F, 12/F & 16/F only) = 繫樑(只適用於3樓、6樓、8樓、10樓、12樓及16樓)

TOWER *(*)= 第*座(*)

UP = Up = 上

U.P. = Utility Platform = 工作平台

U.P.* = Utility Platform with Auto-Closing Door = 工作平台連自行關閉式門^

U.P. ABOVE = Utility Platform above = 工作平台置上

U.P. COVER = Utility Platform cover = 工作平台頂蓋

W.M.C. = Water Meter Cabinet = 水錶櫃

☐☐☐ = Outdoor Unit of Air-conditioner (Single Deck) = 冷氣機之室外機(單層)

☐☐☐ = Outdoor Unit of Air-conditioner (Double Deck) = 冷氣機之室外機(雙層)

☐☐☐☐ = AREA DESIGNATED AS COMMON AREA IN DMC PLAN = Area designated as common area in deed of mutual covenant plan = 公契圖則內訂明之公用地方

Notes applicable to floor plans of residential properties in the Phase:

適用於期數的住宅物業樓面平面圖之備註：

- 1) The dimensions of the floor plans are all structural dimensions in millimetre.
樓面平面圖之尺寸所列數字為以毫米標示之建築結構尺寸。
- 2) Balconies and utility platforms are non-enclosed area.
露台及工作平台為不可封閉之地方。
- 3) There may be architectural features and / or exposed pipes on external walls, flat roofs and common flat roofs of some floors.
部份樓層外牆、平台及公用平台設有建築裝飾及/或外露喉管。
- 4) There may be ceiling bulkheads or suspended ceiling at living room, dining room, bedroom, corridor, bathroom, store, open kitchen and/ or kitchen of some residential properties for the air-conditioning system and / or conduits and / or Mechanical and Electrical services.
部分住宅物業客廳、飯廳、睡房、走廊、浴室、儲物室、開放式廚房及/或廚房之裝飾橫樑或假天花內裝置冷氣系統及/或喉管及/或其他機電設備。
- 5) There are curtain walls and/or non-structural prefabricated external walls in some/all the residential properties. The saleable area of a residential property has included the area of curtain walls and/or non-structural prefabricated external walls and is measured from the exterior of such curtain walls and/or non-structural prefabricated external walls.
部份/全部住宅物業有幕牆及/或非結構的預製外牆。住宅物業之實用面積之計算包括幕牆及/或非結構的預製外牆之面積，並由幕牆及/或非結構的預製外牆之外圍起計。
- 6) The ceiling height of some residential properties may vary due to structural, architectural and /or decoration design variations.
部分住宅物業之天花高度將會因應結構、建築設計及/或裝修設計上的需要有差異。

- 7) The indications of fittings such as sinks, bathtubs, water closet and wash basins, etc. shown on the floor plans are indications of approximate locations only and not indications of their actual size, design or shapes.
樓面平面圖所展示之裝置如洗滌盤、浴缸、坐廁及洗面盆等只供展示其大概位置而非展示其實際大小、設計或形狀。

- 8) During the necessary maintenance of the external walls of towers arranged by the Manager of the Phase, gondola and lifting platforms will be operating in the airspace outside windows of the residential properties and above flat roof / roof of such towers.
在期數管理人安排於大廈外牆之必要維修進行期間，吊船及升降平台將在該等大廈的住宅物業之窗戶外及平台/天台上之空間運作。

- 9) For some residential properties, the air-conditioning platform(s) outside the residential unit will be placed with one or more outdoor air-conditioner unit(s) belonging to such residential property and/ or other residential properties. Such air-conditioner unit(s) may emit heat and / or sounds.
部份住宅物業外的冷氣機平台將會放置屬於此住宅物業及/或其他住宅物業的一部或多部冷氣戶外機。該等冷氣機可能發出熱力及/或聲音。

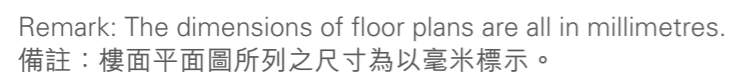
Fixed glazing (with or without maintainence window) as indicated in the floor plans of the Phase are provided for noise mitigation.

固定玻璃窗戶(配有或不配有維修用窗)已在期數的樓面平面圖中顯示之位置提供以緩解噪音。

^ Acoustic Window (baffle type), Enhanced Acoustic Balcony (baffle type) and Private Flat Roof and Utility Platform with Auto-Closing Door indicated on the floor plans of the Phase are provided for noise mitigation.

^ 減音窗戶(擋音式)、強效減音露台(擋音式)及設於私人平台及工作平台的自行關閉式門已在期數的樓面平面圖中顯示之位置提供以緩解噪音。

Tower 3 (3A & 3B)
第3座 (3A及3B)



Tower 3 (3A & 3B)
第3座 (3A及3B)

1/F FLOOR PLAN
1樓樓面平面圖

	Tower 座數	Floor 樓層	Flat 單位			
			A	B	C	D
The thickness of the floor slabs (excluding plaster) (mm) of each residential property 每個住宅物業的樓板(不包括灰泥)的厚度(毫米)	Tower 3 (3A) 第3座 (3A)	1/F 1樓	150			/
	Tower 3 (3B) 第3座 (3B)		150			
The floor-to-floor height (mm) of each residential property 每個住宅物業的層與層之間的高度(毫米)	Tower 3 (3A) 第3座 (3A)		3195, 3225			/
	Tower 3 (3B) 第3座 (3B)		3195, 3225			

The internal areas of the residential properties on the upper floors will generally be slightly larger than those on the lower floors because of the reducing thickness of the structural walls on the upper floors.

Notes:

1. The internal ceiling height within residential properties may vary due to structural, architectural and/or decoration design variations.
2. Please refer to page 24 of this sales brochure for legend of the terms and abbreviations in studying the floor plans.
3. For details of the noise mitigation measures, please refer to the Relevant Information section in this sales brochure.

因住宅物業的較高樓層的結構牆的厚度遞減，較高樓層的內部面積，一般比較低樓層的內部面積稍大。

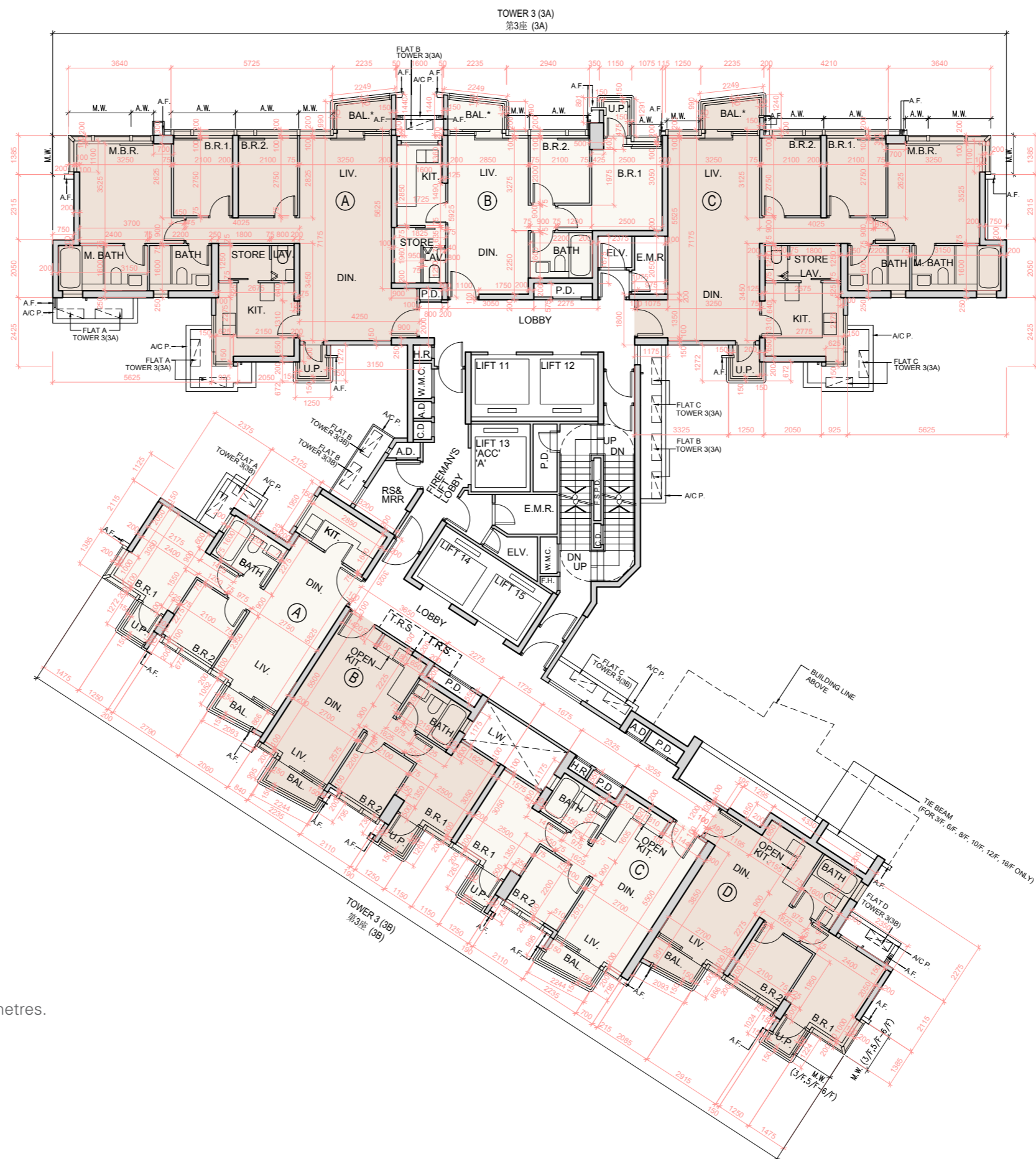
備註：

1. 住宅物業之天花高度將會因應其結構、建築及/或裝修設計上的差異而有所不同。
2. 請參閱本售樓說明書第24頁之圖例以協助閱讀樓面平面圖之名稱和簡稱。
3. 有關噪音緩解措施之詳情，請參閱本售樓說明書的有關資料章節。

11 FLOOR PLANS OF RESIDENTIAL PROPERTIES IN THE PHASE 期數的住宅物業的樓面平面圖

Tower 3 (3A & 3B) 第3座 (3A及3B)

2/F - 3/F, 5/F - 12/F &
15/F - 18/F FLOOR PLAN
2樓至3樓、5樓至12樓及
15樓至18樓樓面平面圖



Remark: The dimensions of floor plans are all in millimetres.
備註：樓面平面圖所列之尺寸為以毫米標示。

Scale 比例：



Tower 3 (3A & 3B)
第3座 (3A及3B)

2/F - 3/F, 5/F - 12/F &
15/F - 18/F FLOOR PLAN
2樓至3樓、5樓至12樓及
15樓至18樓樓面平面圖

	Tower 座數	Floor 樓層	Flat 單位			
			A	B	C	D
The thickness of the floor slabs (excluding plaster) (mm) of each residential property 每個住宅物業的樓板 (不包括灰泥) 的厚度 (毫米)	Tower 3 (3A) 第3座 (3A)	2/F - 3/F, 5/F - 12/F & 15/F - 18/F 2樓至3樓、 5樓至12樓及15樓至18樓	150			/
	Tower 3 (3B) 第3座 (3B)		150			
The floor-to-floor height (mm) of each residential property 每個住宅物業的層與層之間的高度 (毫米)	Tower 3 (3A) 第3座 (3A)		3225			/
	Tower 3 (3B) 第3座 (3B)		3225			

The internal areas of the residential properties on the upper floors will generally be slightly larger than those on the lower floors because of the reducing thickness of the structural walls on the upper floors.

- Notes:
- The internal ceiling height within residential properties may vary due to structural, architectural and/or decoration design variations.
 - Please refer to page 24 of this sales brochure for legend of the terms and abbreviations in studying the floor plans.
 - For details of the noise mitigation measures, please refer to the Relevant Information section in this sales brochure.
 - 4/F, 13/F, 14/F and 24/F are omitted.

因住宅物業的較高樓層的結構牆的厚度遞減，較高樓層的內部面積，一般比較低樓層的內部面積稍大。

- 備註：
- 住宅物業之天花高度將會因應其結構、建築及/或裝修設計上的差異而有所不同。
 - 請參閱本售樓說明書第24頁之圖例以協助閱讀樓面平面圖之名稱和簡稱。
 - 有關噪音緩解措施之詳情，請參閱本售樓說明書的有關資料章節。
 - 不設4樓、13樓、14樓及24樓。

11 FLOOR PLANS OF RESIDENTIAL PROPERTIES IN THE PHASE 期數的住宅物業的樓面平面圖

Tower 3 (3A & 3B) 第3座 (3A及3B)

19/F - 23/F & 25/F - 27/F
FLOOR PLAN
19樓至23樓及25樓至27樓
樓面平面圖



Remark: The dimensions of floor plans are all in millimetres.
備註：樓面平面圖所列之尺寸為以毫米標示。

Scale 比例：



Tower 3 (3A & 3B)

第3座 (3A及3B)

19/F - 23/F & 25/F - 27/F

FLOOR PLAN

19樓至23樓及25樓至27樓

樓面平面圖

	Tower 座數	Floor 樓層	Flat 單位				
			A	B	C	D	E
The thickness of the floor slabs (excluding plaster) (mm) of each residential property 每個住宅物業的樓板 (不包括灰泥) 的厚度 (毫米)	Tower 3 (3A) 第3座 (3A)	19/F - 23/F & 25/F - 26/F 19樓至23樓及25樓至26樓	150			/	/
		27/F 27樓					
	Tower 3 (3B) 第3座 (3B)	19/F - 23/F & 25/F - 27/F 19樓至23樓及25樓至27樓	150				
The floor-to-floor height (mm) of each residential property 每個住宅物業的層與層之間的高度 (毫米)	Tower 3 (3A) 第3座 (3A)	19/F - 23/F & 25/F - 26/F 19樓至23樓及25樓至26樓	3325			/	/
		27/F 27樓	2975, 3025, 3275, 3325, 3375, 3625, 3675	3075, 3175, 3325, 3375, 3675	2975, 3025, 3275, 3325, 3375, 3675		
	Tower 3 (3B) 第3座 (3B)	19/F - 23/F & 25/F - 27/F 19樓至23樓及25樓至27樓	3325				

The internal areas of the residential properties on the upper floors will generally be slightly larger than those on the lower floors because of the reducing thickness of the structural walls on the upper floors.

- Notes:
- The internal ceiling height within residential properties may vary due to structural, architectural and/or decoration design variations.
 - Please refer to page 24 of this sales brochure for legend of the terms and abbreviations in studying the floor plans.
 - For details of the noise mitigation measures, please refer to the Relevant Information section in this sales brochure.
 - 4/F, 13/F, 14/F and 24/F are omitted.

因住宅物業的較高樓層的結構牆的厚度遞減，較高樓層的內部面積，一般比較低樓層的內部面積稍大。

- 備註：
- 住宅物業之天花高度將會因應其結構、建築及/或裝修設計上的差異而有所不同。
 - 請參閱本售樓說明書第24頁之圖例以協助閱讀樓面平面圖之名稱和簡稱。
 - 有關噪音緩解措施之詳情，請參閱本售樓說明書的有關資料章節。
 - 不設4樓、13樓、14樓及24樓。

1 FLOOR PLANS OF RESIDENTIAL PROPERTIES IN THE PHASE 期數的住宅物業的樓面平面圖

Tower 3 (3A & 3B) 第3座 (3A及3B)

28/F FLOOR PLAN 28樓樓面平面圖



Remark: The dimensions of floor plans are all in millimetres.
備註：樓面平面圖所列之尺寸為以毫米標示。

Scale 比例：



Tower 3 (3A & 3B)
第3座 (3A及3B)

28/F FLOOR PLAN
28樓樓面平面圖

	Tower 座數	Floor 樓層	Flat 單位				
			A	B	C	D	E
The thickness of the floor slabs (excluding plaster) (mm) of each residential property 每個住宅物業的樓板(不包括灰泥)的厚度(毫米)	Tower 3 (3A) 第3座 (3A)	28/F 28樓	150		/	/	/
	Tower 3 (3B) 第3座 (3B)		150				
The floor-to-floor height (mm) of each residential property 每個住宅物業的層與層之間的高度(毫米)	Tower 3 (3A) 第3座 (3A)		2975, 3275, 3325, 3375, 3675	2975, 3325, 3375, 3675	/	/	/
	Tower 3 (3B) 第3座 (3B)		3325				

The internal areas of the residential properties on the upper floors will generally be slightly larger than those on the lower floors because of the reducing thickness of the structural walls on the upper floors.

Notes:

1. The internal ceiling height within residential properties may vary due to structural, architectural and/or decoration design variations.
2. Please refer to page 24 of this sales brochure for legend of the terms and abbreviations in studying the floor plans.
3. For details of the noise mitigation measures, please refer to the Relevant Information section in this sales brochure.

因住宅物業的較高樓層的結構牆的厚度遞減，較高樓層的內部面積，一般比較低樓層的內部面積稍大。

備註：

1. 住宅物業之天花高度將會因應其結構、建築及/或裝修設計上的差異而有所不同。
2. 請參閱本售樓說明書第24頁之圖例以協助閱讀樓面平面圖之名稱和簡稱。
3. 有關噪音緩解措施之詳情，請參閱本售樓說明書的有關資料章節。

11 FLOOR PLANS OF RESIDENTIAL PROPERTIES IN THE PHASE 期數的住宅物業的樓面平面圖

Tower 3 (3A & 3B) 第3座 (3A及3B)

29/F FLOOR PLAN 29樓樓面平面圖



Remark: The dimensions of floor plans are all in millimetres.
備註：樓面平面圖所列之尺寸為以毫米標示。

Scale 比例：



Tower 3 (3A & 3B)
第3座 (3A及3B)

29/F FLOOR PLAN
29樓樓面平面圖

	Tower 座數	Floor 樓層	Flat 單位				
			A	B	C	D	E
The thickness of the floor slabs (excluding plaster) (mm) of each residential property 每個住宅物業的樓板(不包括灰泥)的厚度(毫米)	Tower 3 (3A) 第3座 (3A)	29/F 29樓	150, 200		/	/	/
	Tower 3 (3B) 第3座 (3B)		200				
The floor-to-floor height (mm) of each residential property 每個住宅物業的層與層之間的高度(毫米)	Tower 3 (3A) 第3座 (3A)		3500, 3550, 3850		/	/	/
	Tower 3 (3B) 第3座 (3B)		3500, 3850				

The internal areas of the residential properties on the upper floors will generally be slightly larger than those on the lower floors because of the reducing thickness of the structural walls on the upper floors.

Notes:

1. The internal ceiling height within residential properties may vary due to structural, architectural and/or decoration design variations.
2. Please refer to page 24 of this sales brochure for legend of the terms and abbreviations in studying the floor plans.
3. For details of the noise mitigation measures, please refer to the Relevant Information section in this sales brochure.

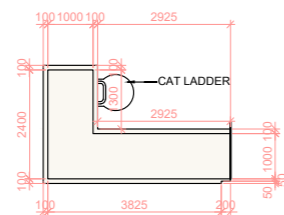
因住宅物業的較高樓層的結構牆的厚度遞減，較高樓層的內部面積，一般比較低樓層的內部面積稍大。

備註：

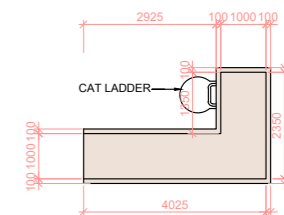
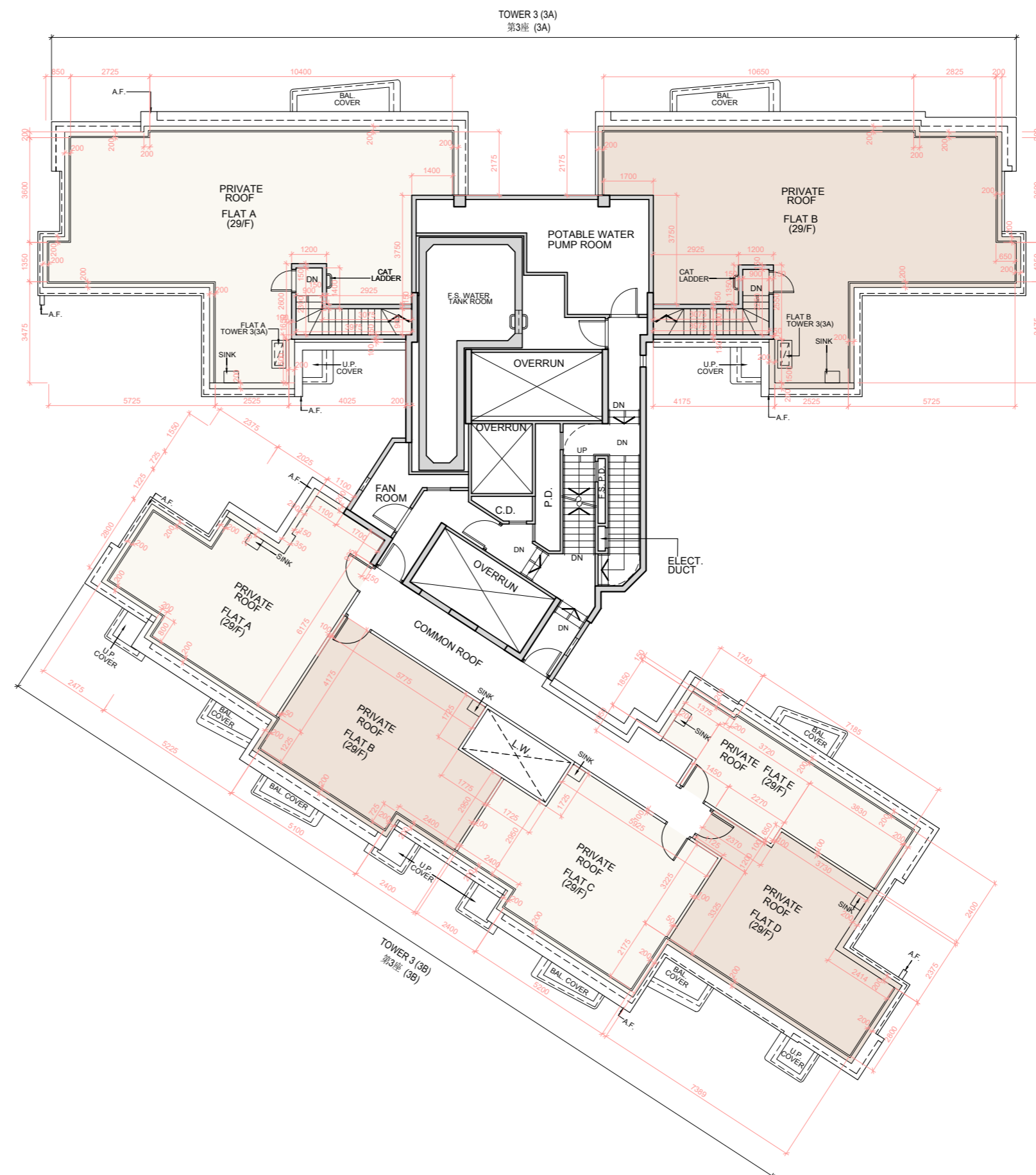
1. 住宅物業之天花高度將會因應其結構、建築及/或裝修設計上的差異而有所不同。
2. 請參閱本售樓說明書第24頁之圖例以協助閱讀樓面平面圖之名稱和簡稱。
3. 有關噪音緩解措施之詳情，請參閱本售樓說明書的有關資料章節。

Tower 3 (3A & 3B) 第3座 (3A及3B)

ROOF FLOOR PLAN 天台樓面平面圖



ROOF OF STAIRHOOD FOR FLAT A
FOR TOWER 3 (3A)



ROOF OF STAIRHOOD FOR FLAT B
FOR TOWER 3 (3A)

Remark: The dimensions of floor plans are all in millimetres.
備註：樓面平面圖所列之尺寸為以毫米標示。

Scale 比例：



Tower 3 (3A & 3B)
第3座 (3A及3B)

ROOF FLOOR PLAN
天台樓面平面圖

	Tower 座數	Floor 樓層	Flat 單位				
			A	B	C	D	E
The thickness of the floor slabs (excluding plaster) (mm) of each residential property 每個住宅物業的樓板(不包括灰泥)的厚度(毫米)	Tower 3 (3A) 第3座 (3A)	Roof 天台	150		/	/	/
	Tower 3 (3B) 第3座 (3B)		/				
The floor-to-floor height (mm) of each residential property 每個住宅物業的層與層之間的高度(毫米)	Tower 3 (3A) 第3座 (3A)		3000		/	/	/
	Tower 3 (3B) 第3座 (3B)		/				

The internal areas of the residential properties on the upper floors will generally be slightly larger than those on the lower floors because of the reducing thickness of the structural walls on the upper floors.

Notes:

1. The internal ceiling height within residential properties may vary due to structural, architectural and/or decoration design variations.
2. Please refer to page 24 of this sales brochure for legend of the terms and abbreviations in studying the floor plans.
3. For details of the noise mitigation measures, please refer to the Relevant Information section in this sales brochure.

因住宅物業的較高樓層的結構牆的厚度遞減，較高樓層的內部面積，一般比較低樓層的內部面積稍大。

備註：

1. 住宅物業之天花高度將會因應其結構、建築及/或裝修設計上的差異而有所不同。
2. 請參閱本售樓說明書第24頁之圖例以協助閱讀樓面平面圖之名稱和簡稱。
3. 有關噪音緩解措施之詳情，請參閱本售樓說明書的有關資料章節。