

11 FLOOR PLANS OF RESIDENTIAL PROPERTIES IN THE DEVELOPMENT

發展項目的住宅物業的樓面平面圖

LEGEND FOR FLOOR PLAN 平面圖圖例

A/C PLATFORM	= AIR CONDITIONER PLATFORM	= 空調機平台
ARCH. FEATURE	= ARCHITECTURAL FEATURE	= 建築裝飾
ARCH. FEATURE ABOVE	= ARCHITECTURAL FEATURE ABOVE	= 建築裝飾在上
B.	= BATHROOM	= 浴室
BAL. & U.P.	= BALCONY AND UTILITY PLATFORM	= 露台及工作平台
BAL. & U.P. COVER	= COVER OF BALCONY AND UTILITY PLATFORM	= 露台及工作平台上蓋
DN	= DOWN	= 落
E.M.C.	= ELECTRICAL METER CABINET	= 電錶櫃
H.R. AT H/L	= HOSE REEL AT HIGH LEVEL	= 消防喉轆在高位
LIV / DIN	= LIVING ROOM / DINING ROOM	= 客廳 / 飯廳
P.D.	= PIPE DUCT	= 管道
W.M.C.	= WATER METER CABINET	= 水錶櫃

Notes applicable to the floor plans of this section:

1. Exposed common pipes are located at / adjacent to the balcony and / or utility platform and / or flat roof and / or air conditioner platform and / or external wall of some residential properties. For details, please refer to the latest approved building plans and / or approved drainage plans.
2. There may be sunken slabs and / or bulkheads and / or false ceilings for the installation of mechanical and electrical services at some of the residential properties.
3. The dimensions on the floor plans are all structural dimensions in millimeter.
4. The indications of fittings such as windows, door leafs, kitchen cabinets, drain points, shower cubicles and the door leafs thereof, sinks, water closets, washbasins etc. shown on the floor plans are indications of their approximate locations only and not indications of their actual sizes, locations, designs and shapes.

適用於本節各樓面平面圖之備註：

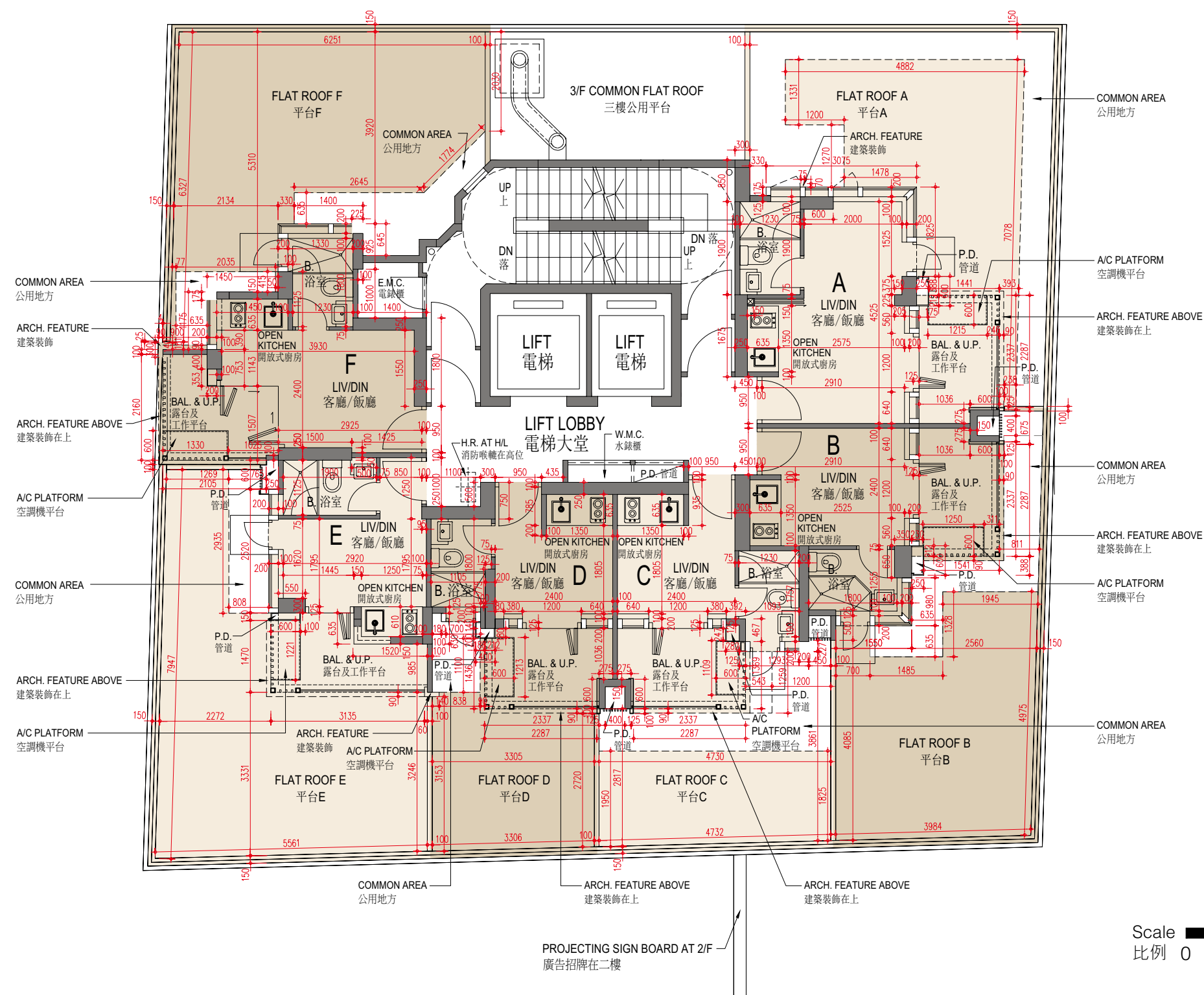
1. 部份住宅物業的露台及 / 或工作平台及 / 或平台及 / 或空調機平台及 / 或外牆上 / 附近設有外露公用喉管。請查閱最新之批准建築圖則及 / 或批准排水圖則以了解詳情。
2. 部份住宅物業有跌級樓板及 / 或裝飾橫樑及 / 或假天花，以安裝機電設備。
3. 樓面平面圖所列之尺寸為以毫米標示之建築結構尺寸。
4. 樓面平面圖所示之裝置如窗、門葉、廚櫃、去水位、淋浴間及其門葉、洗滌盆、座廁、面盆等只供展示其大約位置而非展示其實際大小、位置、設計及形狀。

11 FLOOR PLANS OF RESIDENTIAL PROPERTIES IN THE DEVELOPMENT

發展項目的住宅物業的樓面平面圖

3/F FLOOR PLAN

三樓平面圖



Notes:

1. Please refer to the first page of the section "Floor Plans of Residential Properties in the Development" of this sales brochure for the legend of the terms and abbreviations for the floor plans and notes that are applicable thereto.
2. The dimensions of floor plans are all structural dimensions in millimetre.

備註：

1. 以上樓面平面圖中顯示之名稱及簡稱之圖例及其適用的備註，請參閱本售樓說明書「發展項目的住宅物業的樓面平面圖」一節首頁之說明。
2. 樓面平面圖所列之尺寸數字為以毫米標示的建築結構尺寸。

11 FLOOR PLANS OF RESIDENTIAL PROPERTIES IN THE DEVELOPMENT

發展項目的住宅物業的樓面平面圖

3/F 三樓	Flat 單位					
	A	B	C	D	E	F
Thickness of Floor Slabs (excluding plaster) of each residential property (mm) 每個住宅物業的樓板 (不包括灰泥) 的厚度 (毫米)	120	120	120	120	120	120
Floor-to-Floor Height (note: refers to the height between the top surface of the structural slab of a floor and the top surface of the structural slab of its immediate upper floor) of each residential property (mm) 每個住宅物業的層與層之間的高度 (註：指該樓層之石屎地台面與上一層石屎地台面之高度距離) (毫米)	2650, 3150	2650, 3150	2650, 3150	2650, 3150	2650, 3150	2650, 3150

The internal areas of the residential properties on the upper floors will generally be slightly larger than those on the lower floors because of the reducing thickness of the structural walls on the upper floors.

Remarks :

1. Please refer to the first page of the section "Floor Plans of Residential Properties in the Development" of this sales brochure for the legend of the terms and abbreviations for the floor plans.
2. The dimensions of floor plans are all structural dimensions in millimetre.

因住宅物業的較高樓層的結構牆的厚度遞減，較高樓層的內部面積，一般比較低樓層的內部面積稍大。

備註：

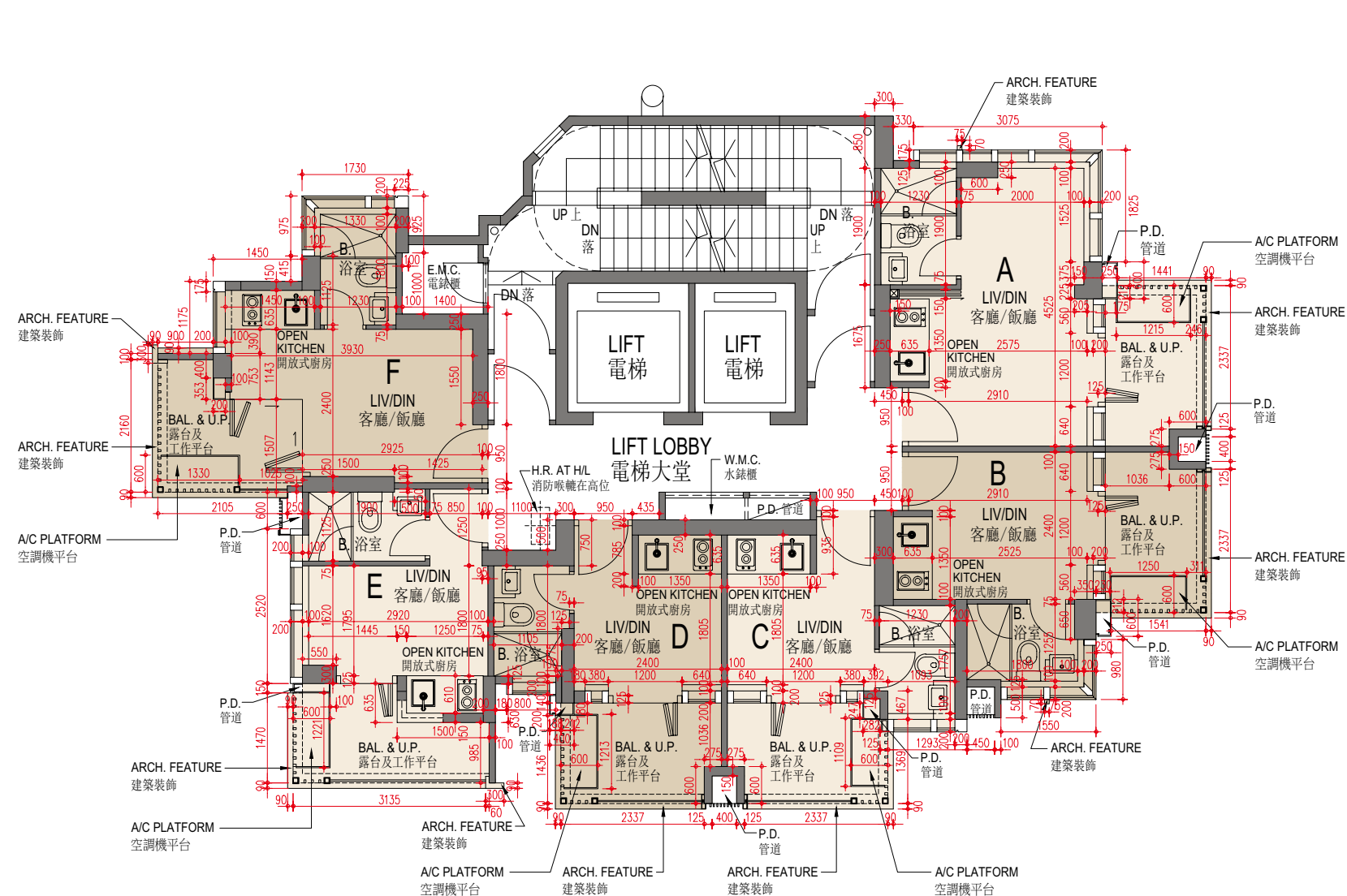
1. 以上樓面平面圖中顯示之名詞及簡稱之圖例，請參閱本售樓說明書「發展項目的住宅物業的樓面平面圖」一節首頁之說明。
2. 樓面平面圖所列之尺寸數字為以毫米標示的建築結構尺寸。

1 FLOOR PLANS OF RESIDENTIAL PROPERTIES IN THE DEVELOPMENT

發展項目的住宅物業的樓面平面圖

5/F - 12/F, 15/F - 23/F and 25/F - 26/F FLOOR PLAN

五樓至十二樓、十五樓至二十三樓及二十五樓至二十六樓平面圖



Scale 0 5M(米)
比例 0 5M(米)

Notes:

- Please refer to the first page of the section "Floor Plans of Residential Properties in the Development" of this sales brochure for the legend of the terms and abbreviations for the floor plans and notes that are applicable thereto.
- The dimensions of floor plans are all structural dimensions in millimetre.

備註：

- 以上樓面平面圖中顯示之名稱及簡稱之圖例及其適用的備註，請參閱本售樓說明書「發展項目的住宅物業的樓面平面圖」一節首頁之說明。
- 樓面平面圖所列之尺寸數字為以毫米標示的建築結構尺寸。

11 FLOOR PLANS OF RESIDENTIAL PROPERTIES IN THE DEVELOPMENT

發展項目的住宅物業的樓面平面圖

5/F - 12/F, 15/F - 23/F and 25/F 五樓至十二樓、十五樓至二十三樓及二十五樓	Flat 單位					
	A	B	C	D	E	F
Thickness of Floor Slabs (excluding plaster) of each residential property (mm) 每個住宅物業的樓板 (不包括灰泥) 的厚度 (毫米)	120	120	120	120	120	120
Floor-to-Floor Height (note: refers to the height between the top surface of the structural slab of a floor and the top surface of the structural slab of its immediate upper floor) of each residential property (mm) 每個住宅物業的層與層之間的高度 (註：指該樓層之石屎地台面與上一層石屎地台面之高度距離) (毫米)	3150	3150	3150	3150	3150	3150
26/F 二十六樓	Flat 單位					
	A	B	C	D	E	F
Thickness of Floor Slabs (excluding plaster) of each residential property (mm) 每個住宅物業的樓板 (不包括灰泥) 的厚度 (毫米)	150	150	150	150	150	150
Floor-to-Floor Height (note: refers to the height between the top surface of the structural slab of a floor and the top surface of the structural slab of its immediate upper floor) of each residential property (mm) 每個住宅物業的層與層之間的高度 (註：指該樓層之石屎地台面與上一層石屎地台面之高度距離) (毫米)	3150	3150	3150	3150	3150	3150

The internal areas of the residential properties on the upper floors will generally be slightly larger than those on the lower floors because of the reducing thickness of the structural walls on the upper floors.

Remarks:

- Please refer to the first page of the section "Floor Plans of Residential Properties in the Development" of this sales brochure for the legend of the terms and abbreviations for the floor plans.
- The dimensions of floor plans are all structural dimensions in millimetre.

因住宅物業的較高樓層的結構牆的厚度遞減，較高樓層的內部面積，一般比較低樓層的內部面積稍大。

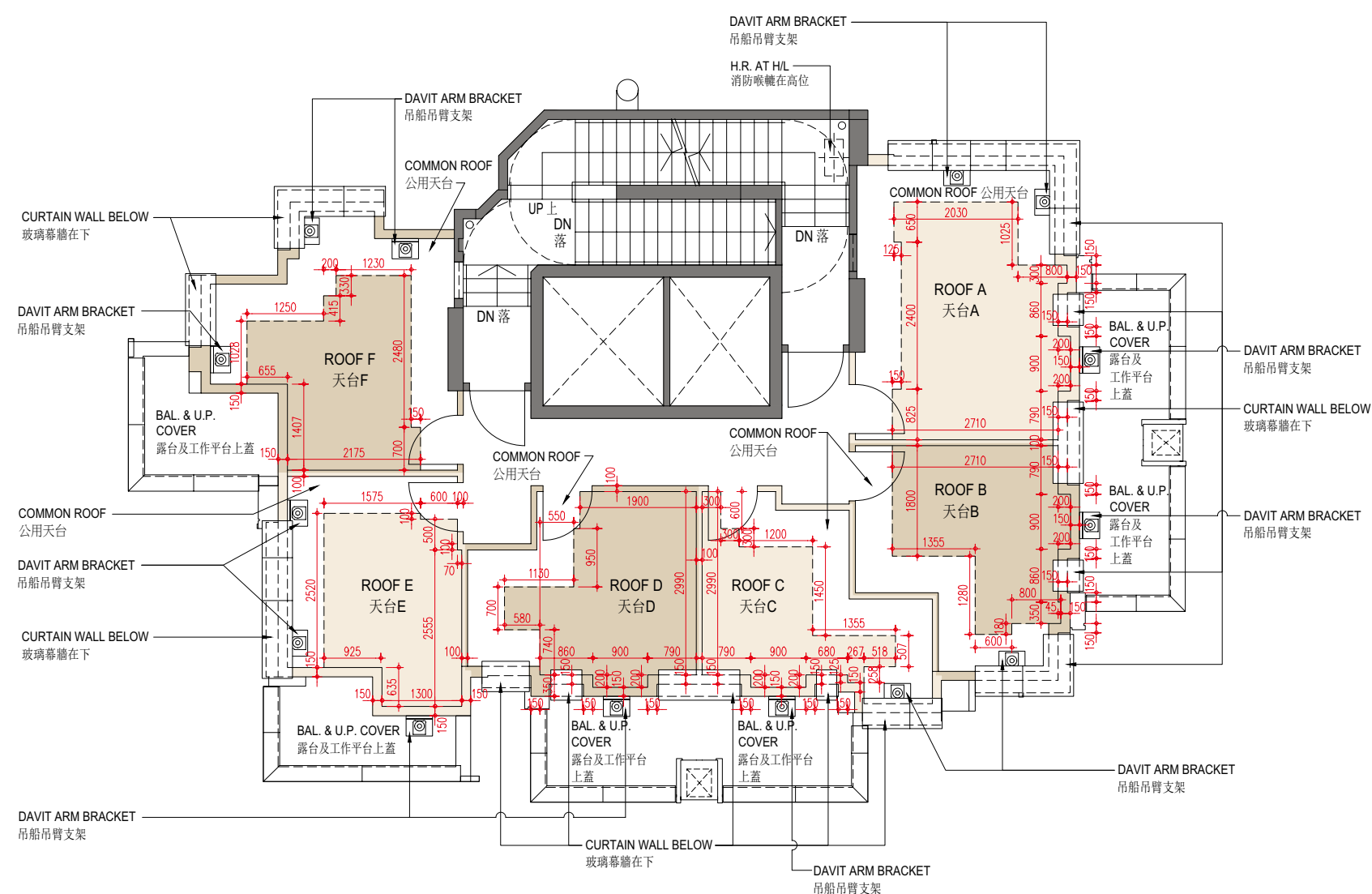
備註：

- 以上樓面平面圖中顯示之名詞及簡稱之圖例，請參閱本售樓說明書「發展項目的住宅物業的樓面平面圖」一節首頁之說明。
- 樓面平面圖所列之尺寸數字為以毫米標示的建築結構尺寸。

11 FLOOR PLANS OF RESIDENTIAL PROPERTIES IN THE DEVELOPMENT

發展項目的住宅物業的樓面平面圖

ROOF FLOOR PLAN 天台平面圖



Scale 0 5M(米)
比例 0 5M(米)

Notes:

1. Please refer to the first page of the section "Floor Plans of Residential Properties in the Development" of this sales brochure for the legend of the terms and abbreviations for the floor plans and notes that are applicable thereto.
2. The dimensions of floor plans are all structural dimensions in millimetre.
3. For the location of the roof, it was specified as flat roof in the general building plans of the Development approved by the Building Authority. In practice, it is a roof and its area is calculated under the roof.

備註：

1. 以上樓面平面圖中顯示之名詞及簡稱之圖例及其適用的備註，請參閱本售樓說明書「發展項目的住宅物業的樓面平面圖」一節首頁之說明。
2. 樓面平面圖所列之尺寸數字為以毫米標示的建築結構尺寸。
3. 有關天台的位置在該發展項目經建築事務監督批准的建築圖則上列為平台，實際上其用途為天台，其面積將以天台計算。

11 FLOOR PLANS OF RESIDENTIAL PROPERTIES IN THE DEVELOPMENT

發展項目的住宅物業的樓面平面圖

Roof 天台	Flat 單位					
	A	B	C	D	E	F
Thickness of Floor Slabs (excluding plaster) of each residential property (mm) 每個住宅物業的樓板 (不包括灰泥) 的厚度 (毫米)	N/A 不適用	N/A 不適用	N/A 不適用	N/A 不適用	N/A 不適用	N/A 不適用
Floor-to-Floor Height (note: refers to the height between the top surface of the structural slab of a floor and the top surface of the structural slab of its immediate upper floor) of each residential property (mm) 每個住宅物業的層與層之間的高度 (註：指該樓層之石屎地台面與上一層石屎地台面之高度距離) (毫米)	N/A 不適用	N/A 不適用	N/A 不適用	N/A 不適用	N/A 不適用	N/A 不適用

The internal areas of the residential properties on the upper floors will generally be slightly larger than those on the lower floors because of the reducing thickness of the structural walls on the upper floors.

Remarks:

- Please refer to the first page of the section "Floor Plans of Residential Properties in the Development" of this sales brochure for the legend of the terms and abbreviations for the floor plans.
- The dimensions of floor plans are all structural dimensions in millimetre.

因住宅物業的較高樓層的結構牆的厚度遞減，較高樓層的內部面積，一般比較低樓層的內部面積稍大。

備註：

- 以上樓面平面圖中顯示之名詞及簡稱之圖例，請參閱本售樓說明書「發展項目的住宅物業的樓面平面圖」一節首頁之說明。
- 樓面平面圖所列之尺寸數字為以毫米標示的建築結構尺寸。