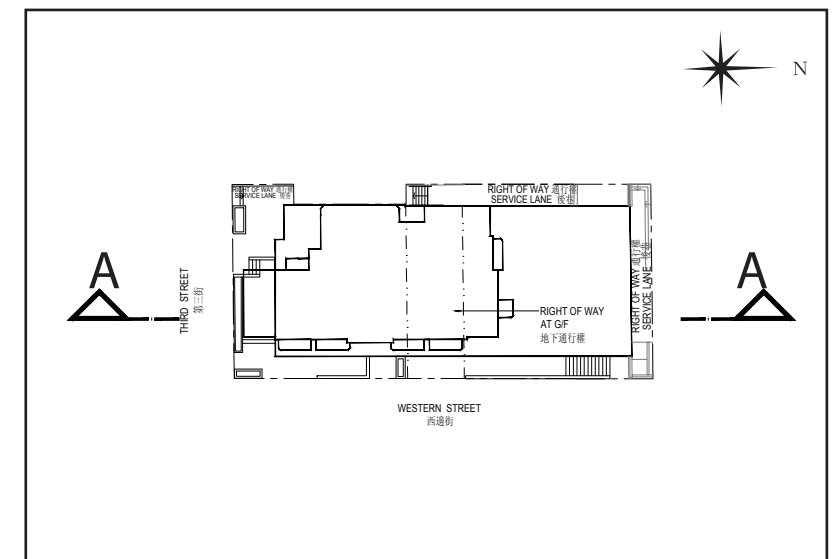
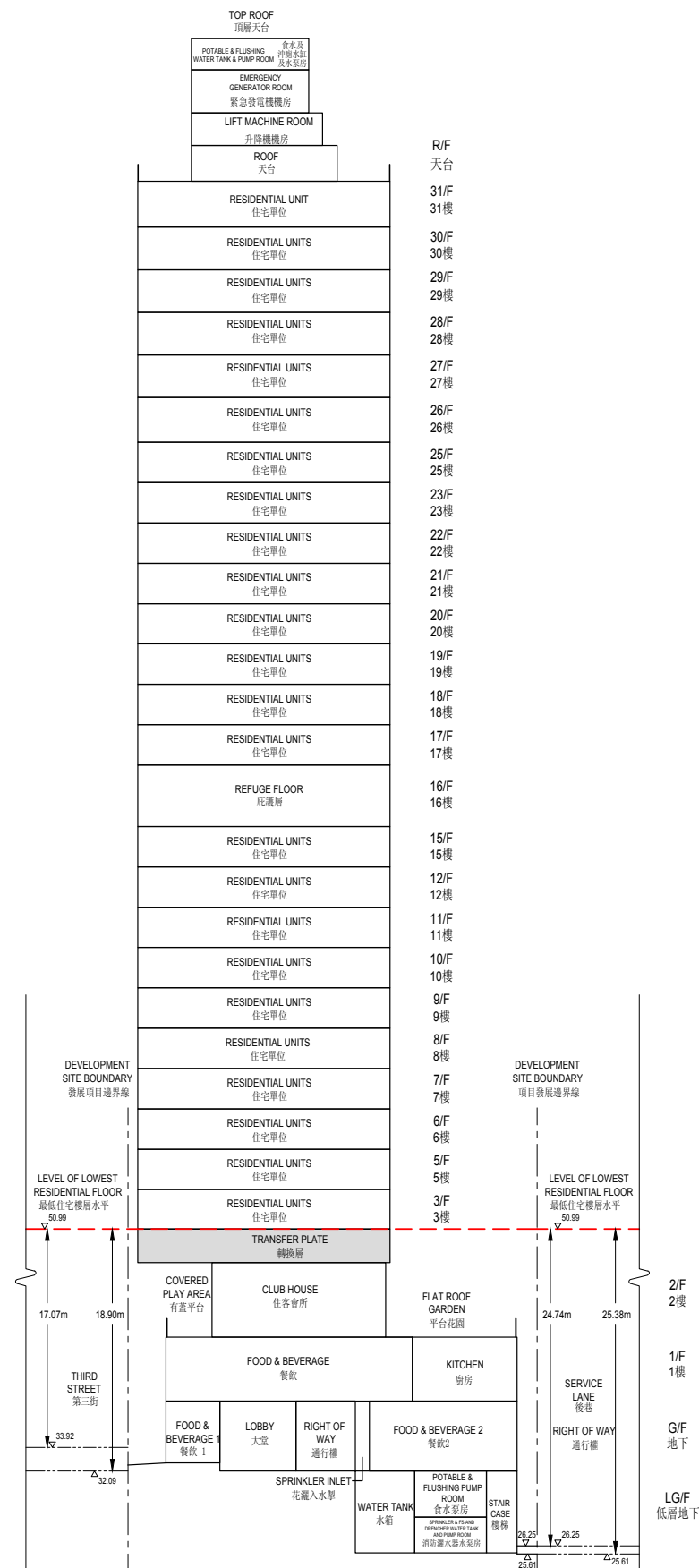


Cross-section Plan A-A
橫截面圖 A-A

圖例 LEGEND

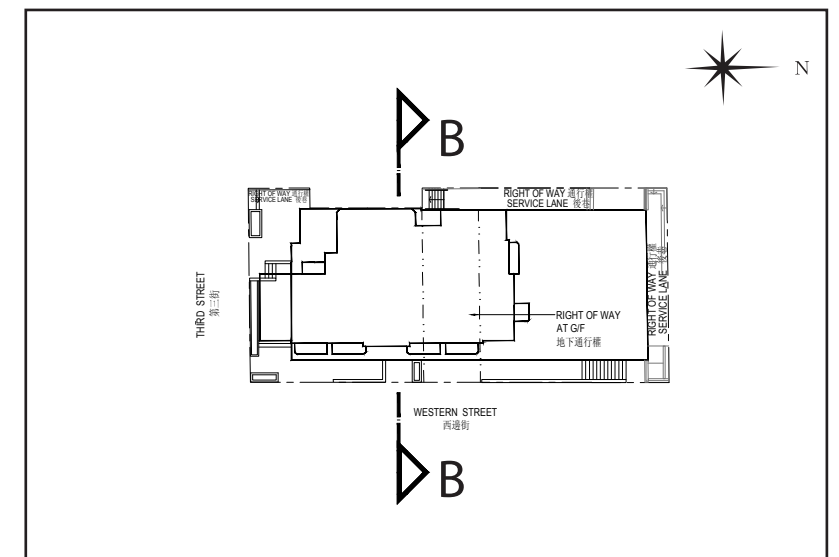
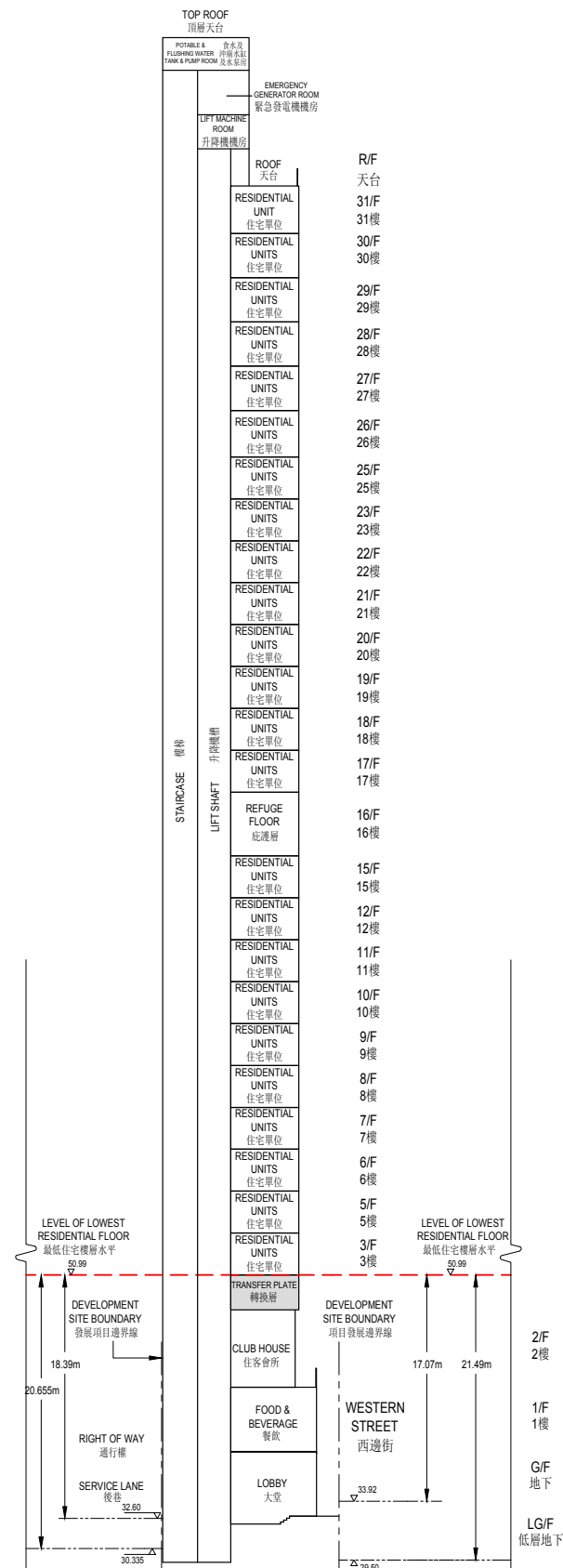
Key Plan 指示圖

- ——— DEVELOPMENT SITE BOUNDARY
發展項目邊界線
- ——— BOUNDARY LINE OF RIGHT OF WAY AT G/F
地下通行權界線

- Note: 1. (▽) denotes height (in metres) above the Hong Kong Principal Datum.
2. (---) Dotted line denotes the level of the lowest residential floor.
3. The level of lowest residential floor of the Development is 50.99 metres above Hong Kong Principal Datum (HKPD).
4. The part of service lane adjacent to the north side of the Development is 25.61 to 26.25 metres above Hong Kong Principal Datum (HKPD).
5. The part of Third Street adjacent to the south side of the Development is 32.09 to 33.92 metres above Hong Kong Principal Datum (HKPD).
6. The cross section plan is prepared according to the latest approved general building plans.

- 備註：1. (▽) 代表香港主水平基準以上的高度(米)。
2. (---) 虛線代表最低住宅樓層水平。
3. 發展項目之最低層住宅為香港主水平基準以上50.99米。
4. 毗鄰建築物的北面現有後巷一段為香港主水平基準以上約25.61米至26.25米。
5. 毗鄰建築物的南面第三街一段為香港主水平基準以上約32.09米至33.92米。
6. 本橫截面圖根據最新的核准圖則制作。

Cross-section Plan B-B 橫截面圖 B-B



圖例 LEGEND

Key Plan 指示圖

- DEVELOPMENT SITE BOUNDARY
發展項目邊界線
- BOUNDARY LINE OF RIGHT OF WAY AT G/F
地下通行權界線

- Note:
- (▽) denotes height (in metres) above the Hong Kong Principal Datum.
 - (---) Dotted line denotes the level of the lowest residential floor.
 - The level of lowest residential floor of the Development is 50.99 metres above Hong Kong Principal Datum (HKPD).
 - The part of service lane adjacent to the west side of the Development is 30.335 to 32.60 metres above Hong Kong Principal Datum (HKPD).
 - The part of Western Street adjacent to the east side of the Development is 29.50 to 33.92 metres above Hong Kong Principal Datum (HKPD).
 - The cross section plan is prepared according to the latest approved general building plans.

- 備註:
- (▽) 代表香港主水平基準以上的高度(米)。
 - (---) 虛線代表最低住宅樓層水平。
 - 發展項目之最低層住宅為香港主水平基準以上 50.99 米。
 - 毗鄰建築物的西面現有後巷一段為香港主水平基準以上約 30.335 米至 32.60 米。
 - 毗鄰建築物的東面西邊街一段為香港主水平基準以上約 29.50 米至 33.92 米。
 - 本橫截面圖根據最新的核准圖則制作。