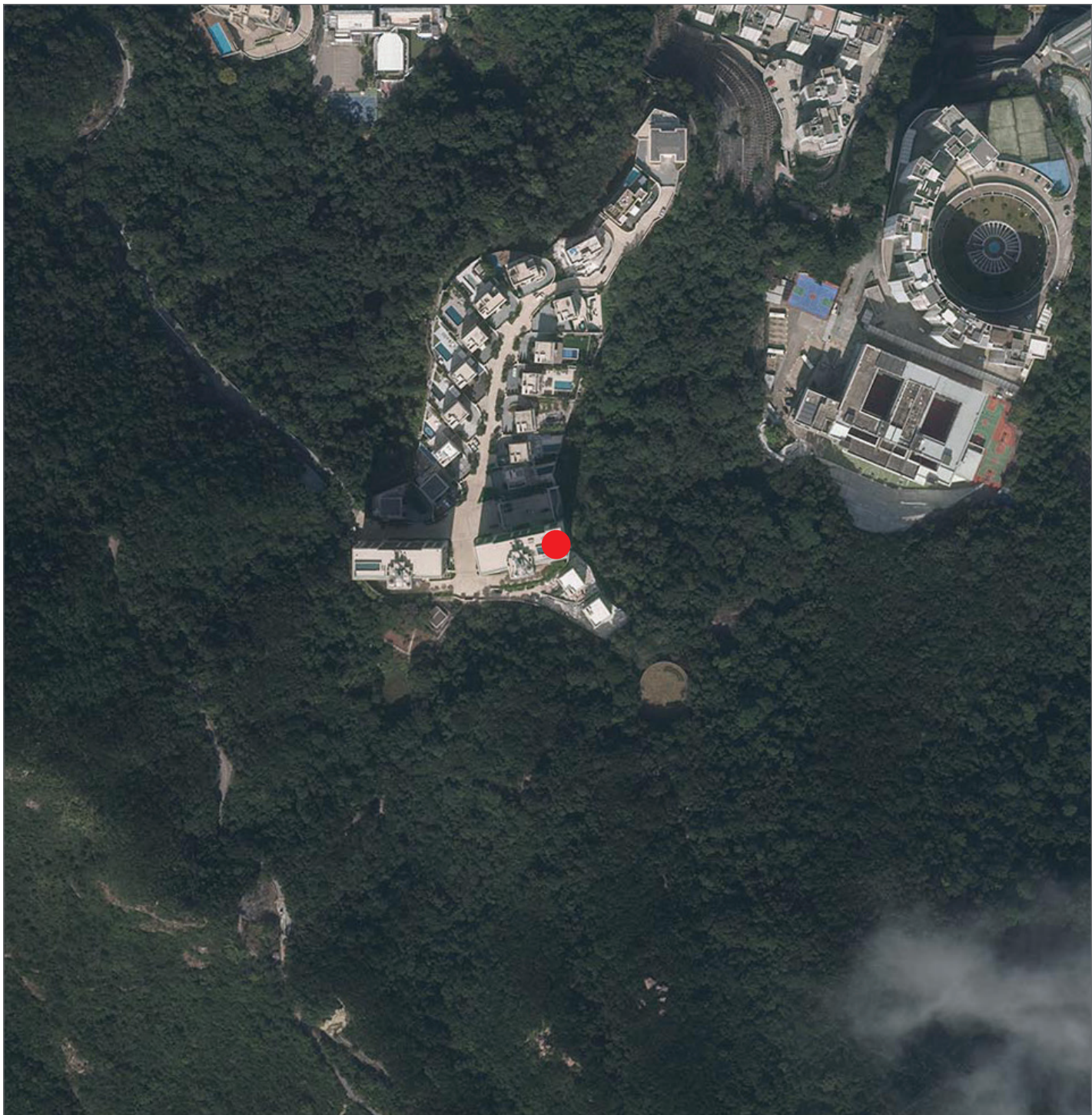


AERIAL PHOTOGRAPH OF THE PHASE
期數的鳥瞰照片



● Location of the Phase 期數的位置

Survey and Mapping Office, Lands Department, The Government of HKSAR © Copyright reserved - reproduction by permission only.
香港特別行政區政府地政總署測繪處©版權所有，未經許可，不得複製。

Adopted from part of the aerial photograph taken by the Survey and Mapping Office of Lands Department at a flying height of 6,000 feet, photo No. E212818C, dated 22 November 2023.
摘錄自地政總署測繪處於2023年11月22日在6,000呎飛行高度拍攝之鳥瞰照片，編號為E212818C。

Notes:

- 1. The aerial photograph is available for free inspection during normal office hours at the sales office.
- 2. Due to technical reasons (such as the shape of the Phase), the aerial photograph may show more than the area required under the “Residential Properties (First-hand Sales) Ordinance”.

備註：

- 1. 該鳥瞰照片存於售樓處，於正常辦公時間內供免費查閱。
- 2. 因技術原因(例如期數之形狀)，鳥瞰照片所顯示的範圍可能多於《一手住宅物業銷售條例》所要求。



This blank area falls outside the coverage of the relevant aerial photograph
鳥瞰照片並不覆蓋本空白範圍



● Location of the Phase 期數的位置

Survey and Mapping Office, Lands Department, The Government of HKSAR © Copyright reserved - reproduction by permission only.
香港特別行政區政府地政總署測繪處©版權所有，未經許可，不得複製。

Adopted from part of the aerial photograph taken by the Survey and Mapping Office of Lands Department at a flying height of 6,000 feet,
photo No. E224651C, dated 7 August 2024.

摘錄自地政總署測繪處於2024年8月7日在6,000呎飛行高度拍攝之鳥瞰照片，編號為E224651C。

Notes:

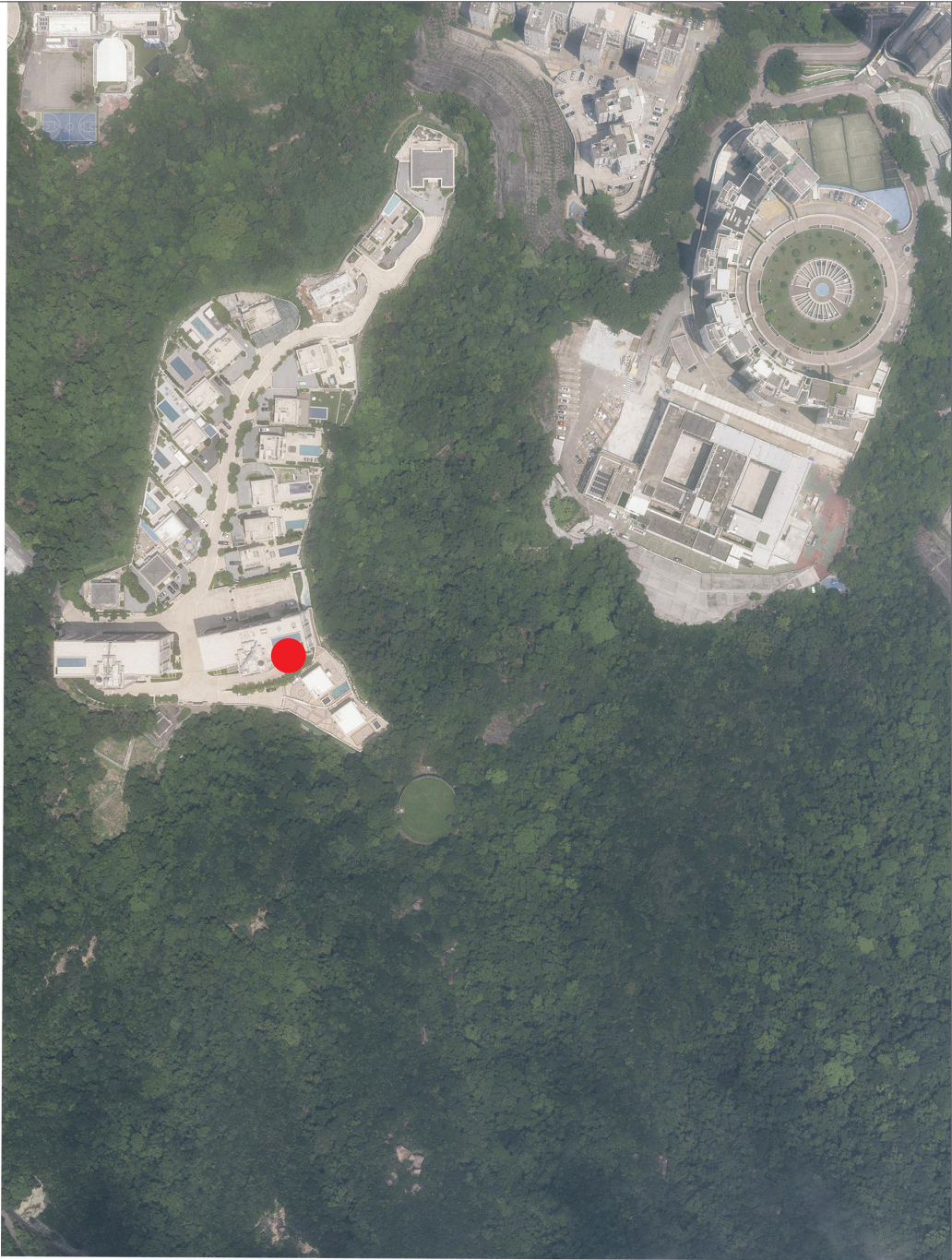
1. The aerial photograph is available for free inspection during normal office hours at the sales office.
2. Due to technical reasons (such as the shape of the Phase), the aerial photograph may show more than the area required under the “Residential Properties (First-hand Sales) Ordinance”.

備註：

1. 該鳥瞰照片存於售樓處，於正常辦公時間內供免費查閱。
2. 因技術原因(例如期數之形狀)，鳥瞰照片所顯示的範圍可能多於《一手住宅物業銷售條例》所要求。

AERIAL PHOTOGRAPH OF THE PHASE
期數的鳥瞰照片

This blank area falls outside the coverage of the relevant aerial photograph
鳥瞰照片並不覆蓋本空白範圍



● Location of the Phase 期數的位置

Survey and Mapping Office, Lands Department, The Government of HKSAR © Copyright reserved - reproduction by permission only.
香港特別行政區政府地政總署測繪處©版權所有，未經許可，不得複製。

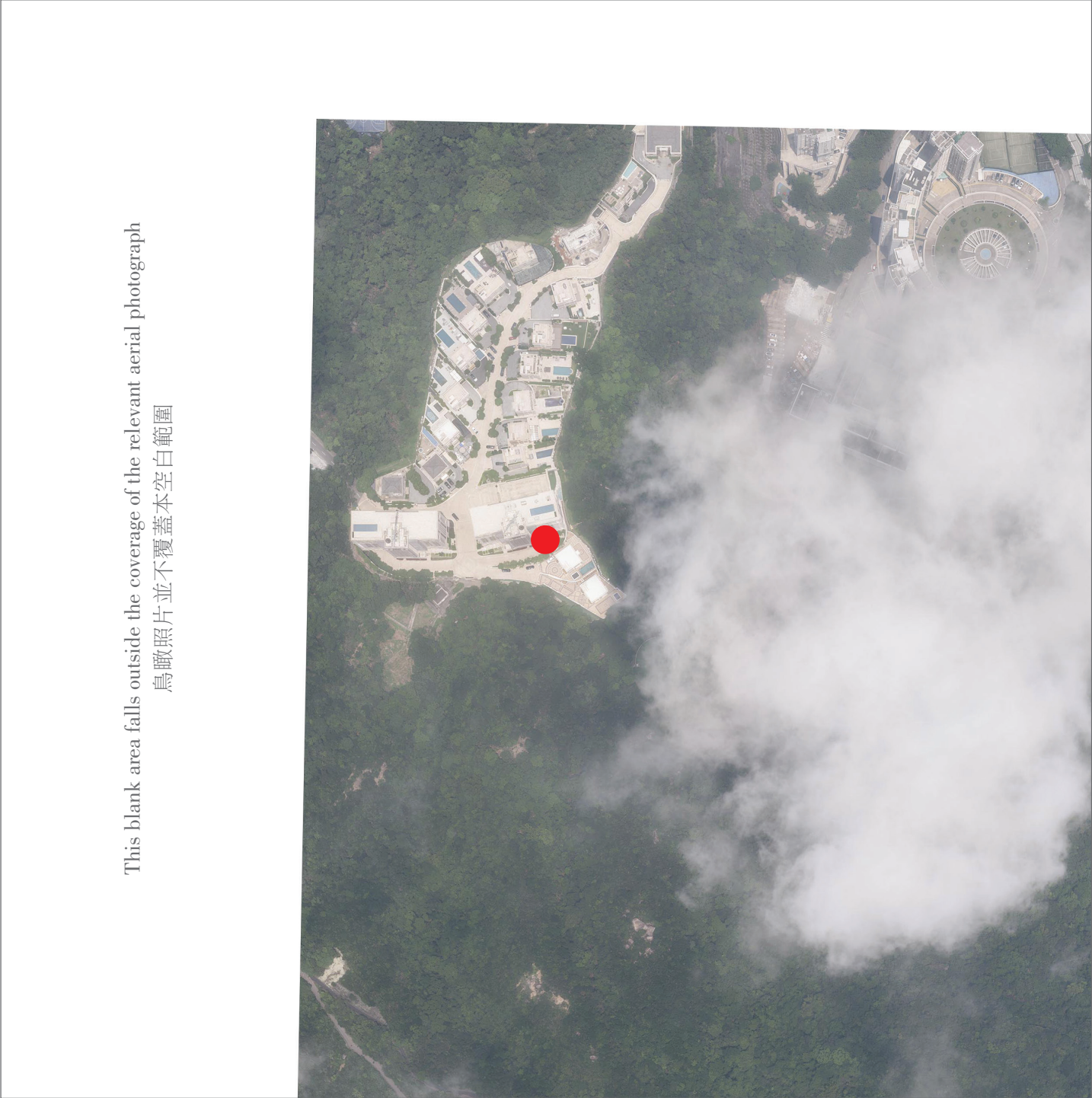
Adopted from part of the aerial photograph taken by the Survey and Mapping Office of Lands Department at a flying height of 6,000 feet,
photo No. E224653C, dated 7 August 2024.
摘錄自地政總署測繪處於2024年8月7日在6,000呎飛行高度拍攝之鳥瞰照片，編號為E224653C。

Notes:

- 1. The aerial photograph is available for free inspection during normal office hours at the sales office.
- 2. Due to technical reasons (such as the shape of the Phase), the aerial photograph may show more than the area required under the “Residential Properties (First-hand Sales) Ordinance”.

備註：

- 1. 該鳥瞰照片存於售樓處，於正常辦公時間內供免費查閱。
- 2. 因技術原因(例如期數之形狀)，鳥瞰照片所顯示的範圍可能多於《一手住宅物業銷售條例》所要求。



● Location of the Phase 期數的位置

Survey and Mapping Office, Lands Department, The Government of HKSAR © Copyright reserved - reproduction by permission only.
香港特別行政區政府地政總署測繪處©版權所有，未經許可，不得複製。

Adopted from part of the aerial photograph taken by the Survey and Mapping Office of Lands Department at a flying height of 6,000 feet,
photo No. E224847C, dated 7 August 2024.
摘錄自地政總署測繪處於2024年8月7日在6,000呎飛行高度拍攝之鳥瞰照片，編號為E224847C。

Notes:

1. The aerial photograph is available for free inspection during normal office hours at the sales office.
2. Due to technical reasons (such as the shape of the Phase), the aerial photograph may show more than the area required under the “Residential Properties (First-hand Sales) Ordinance”.

備註：

1. 該鳥瞰照片存於售樓處，於正常辦公時間內供免費查閱。
2. 因技術原因(例如期數之形狀)，鳥瞰照片所顯示的範圍可能多於《一手住宅物業銷售條例》所要求。