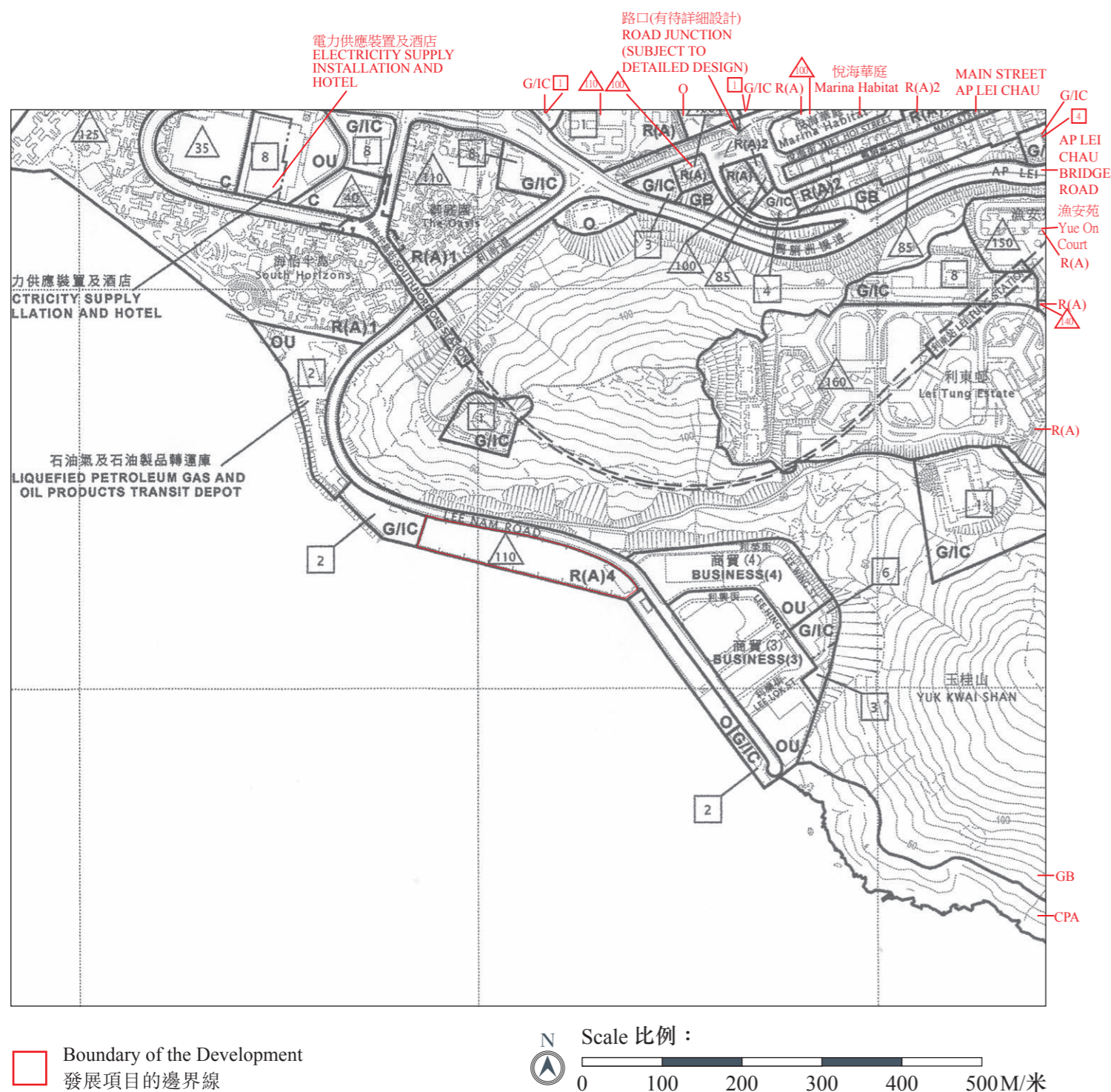


# 9 OUTLINE ZONING PLAN ETC. RELATING TO THE DEVELOPMENT

## 關乎發展項目的分區計劃大綱圖等



Adopted from part of the Approved Aberdeen & Ap Lei Chau Outline Zoning Plan, Plan No.S/H15/33, gazetted on 31 August 2018, with adjustments where necessary as shown in red.

摘錄自2018年8月31日刊憲之香港仔及鴨脷洲分區計劃大綱核准圖，圖則編號為 S/H15/33，有需要處經修正處理，以紅色表示。

### NOTATION 圖例

ZONES 地帶		COMMUNICATIONS 交通	
R(A)	Residential (Group A) 住宅(甲類)		Railway and Station (Underground) 鐵路及車站(地下)
C	Commercial 商業		Major Road and Junction 主要道路及路口
G/IC	Government, Institution or Community 政府、機構或社區		
O	Open Space 休憩用地		
OU	Other Specified Uses 其他指定用途		
GB	Green Belt 綠化地帶		
CPA	Coastal Protection Area 海岸保護區		Maximum Building Height (in Metres above Principal Datum) 最高建築物高度 (在主水平基準上若干米)
			Maximum Building Height (in Number of Storeys) 最高建築物高度(樓層數目)

#### Notes:

- The last updated outline zoning plan and the attached schedule as at the date of printing of the sales brochure are available for free inspection at the sales office during opening hours.
- The Vendor advises prospective purchasers to conduct an on-site visit for a better understanding of the Development site, its surrounding environment and the public facilities nearby.
- The outline zoning plan may show more than the area required under the Residential Properties (First-hand Sales) Ordinance due to the technical reason that the boundary of the Development is irregular.

#### 備註：

- 在印刷售樓說明書當日所適用的最近期分區計劃大綱圖及其附表，可於售樓處開放時間內免費查閱。
- 賣方建議準買方到有關發展地盤作實地考察，以對該發展地盤、其周邊地區環境及附近的公共設施有較佳了解。
- 由於發展項目的邊界線不規則的技術原因，此分區計劃大綱圖所顯示的範圍可能超過《一手住宅物業銷售條例》所規定的範圍。

The plan, prepared by the Planning Department under the direction of the Town Planning Board, is reproduced with the permission of the Director of Lands. © The Government of Hong Kong SAR.

地圖為規劃署遵照城市規劃委員會指示擬備，版權屬香港特別行政區政府，經地政總署准許複印。