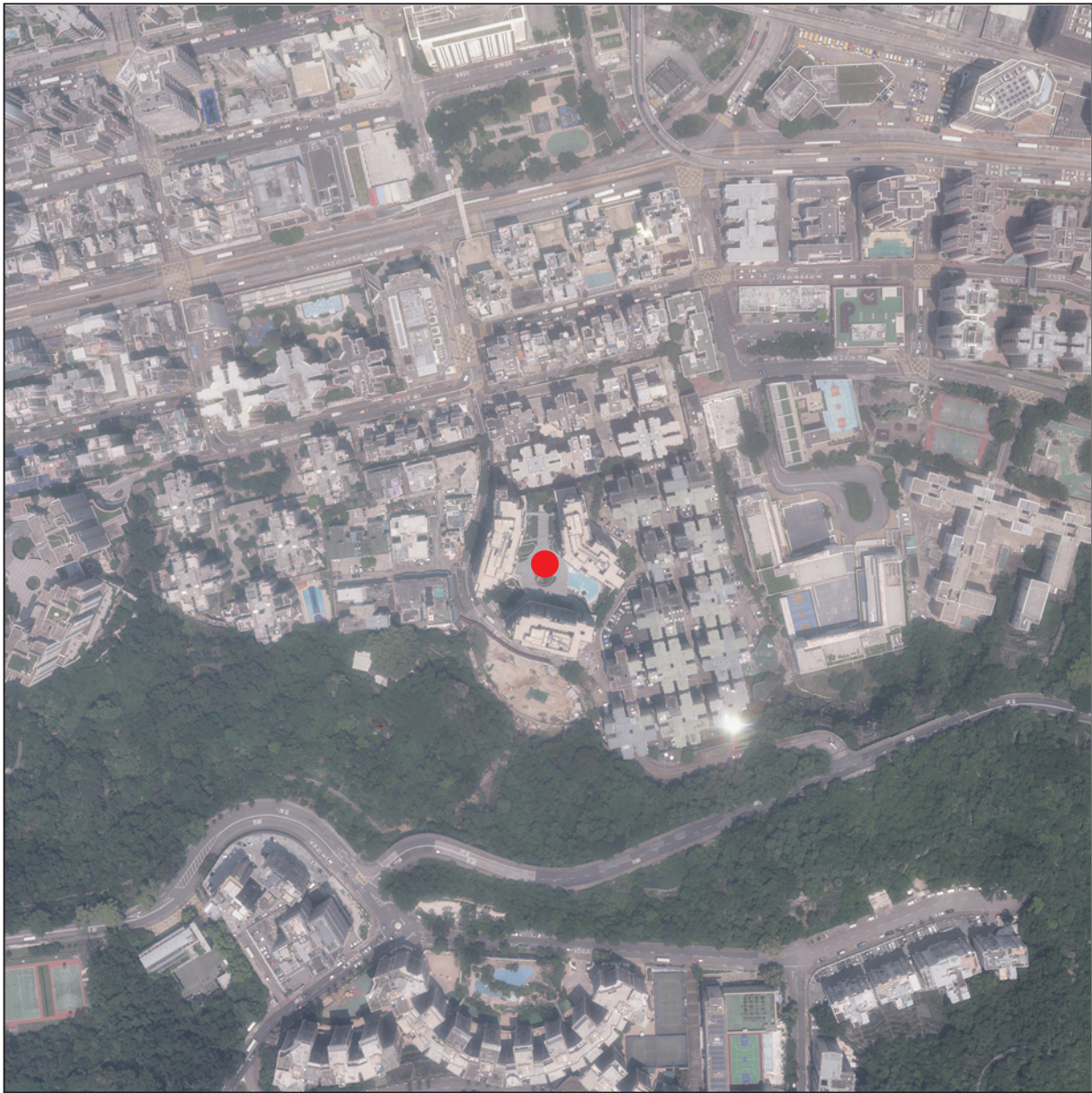


# Aerial photograph of the development 發展項目的鳥瞰照片

Adopted from part of the aerial photograph taken by the Survey and Mapping Office of Lands Department at a flying height of 6,000 feet, photo No. E224969C, dated 7 August 2024.  
摘錄自地政總署測繪處於2024年8月7日在6,000呎飛行高度拍攝之鳥瞰照片，編號為E224969C。



● Location of the Development  
發展項目的位置

Survey and Mapping Office, Lands Departments, The Govement of the HKSAR©Copyright reserved - reproduction by permission only.  
香港特別行政區政府地政總署測繪處©版權所有，未經許可，不得複製。

- Remarks :
1. The aerial photograph is available for free inspection during normal office hours at the sales office.
  2. Due to technical reasons as a result of the irregular boundary of the Development, the aerial photograph has shown more than the area required under the Residential Properties (First-hand Sales) Ordinance.
- 備註：
1. 該鳥瞰照片存於售樓處，於正常辦公時間內供免費查閱。
  2. 因發展項目的不規則界線引致的技術原因，鳥瞰照片所顯示的範圍多於《一手住宅物業銷售條例》所要求。