

FLOOR PLANS OF RESIDENTIAL PROPERTIES IN THE DEVELOPMENT 發展項目的住宅物業的樓面平面圖

Notes

- The dimensions of the floor plans are all structural dimensions in millimeter.
- There are ceiling bulkheads and/or sunken slabs in the houses for the air-conditioning system and mechanical and electrical services.
- There may be architectural features and exposed pipes on some external walls of the houses.
- Floor-to-floor height refers to the height between the top surface of the structural slab of a floor and the top surface of the structural slab of its immediate upper floor.
- Symbols of fittings and fitments shown on the floor plans, such as bathtubs, sink, water closets, hydropa, shower, sink counter, etc. are architectural symbols retrieved from the latest approved general building plans and for general indication only.
- Please refer to the Cross-section Plans on pages XIX - 1 to XIX - 7 and the Trees Location Plan on page XXVII - 2 of this sales brochure to have a better understanding of the houses.

備註

- 平面圖所列之尺寸數字為以毫米標示之建築結構尺寸。
- 洋房有假天花及 / 或跌級樓板以內藏冷氣系統及機電設備。
- 洋房部份外牆設有建築裝飾及外露喉管。
- 層與層之間的高度指該樓層之石屎地台面與上一層石屎地台面之高度距離。
- 平面圖上所顯示的形象裝置符號，例如浴缸、洗滌盤、坐廁、按摩浴池、花灑、洗滌盤櫃等乃擇自最新的經批准的建築圖則，只作一般性標誌。
- 為較佳了解各洋房，請參閱本售樓說明書第 XIX - 1 至 XIX - 7 頁之橫截面圖及第 XXVII - 2 頁之樹木位置圖。

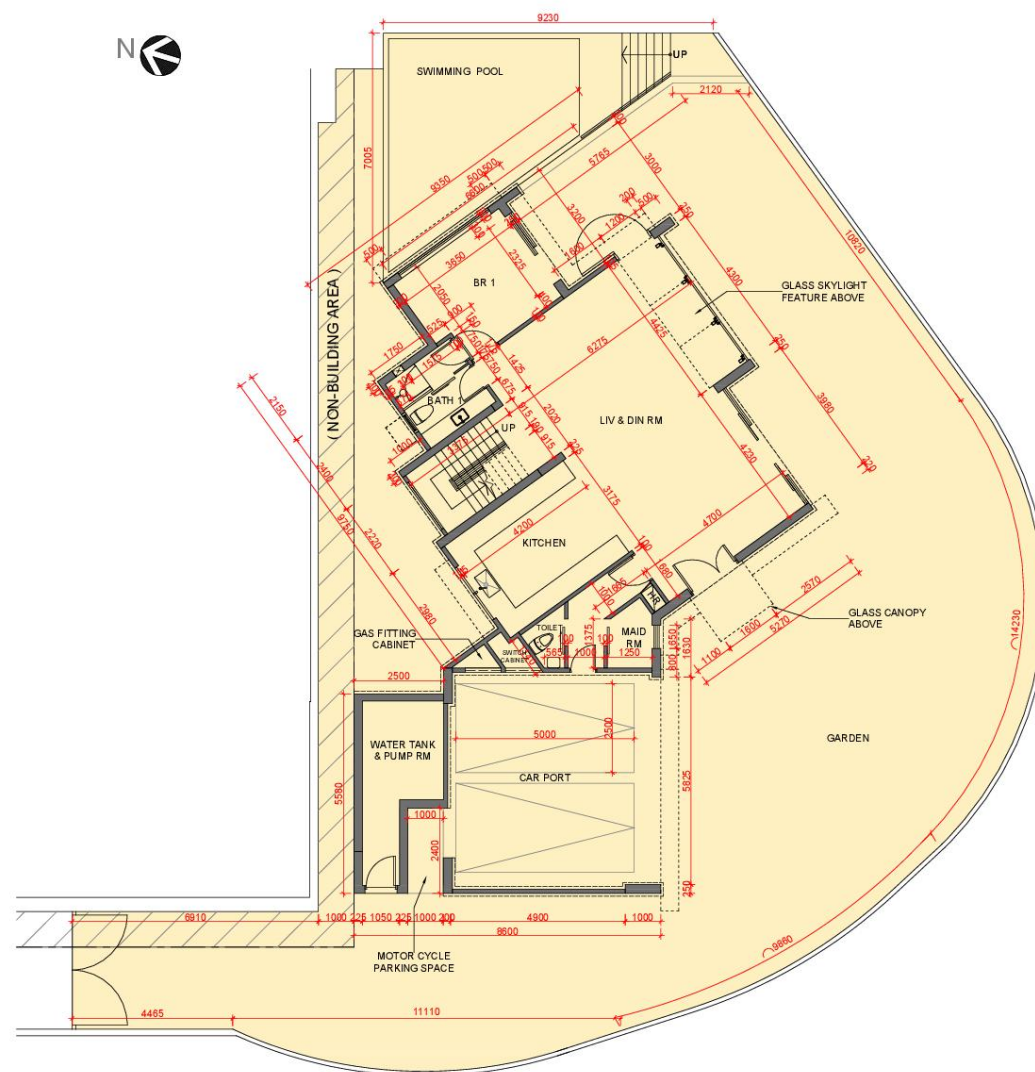
Legend of terms and abbreviations used on floor plans 平面圖中所使用名詞及簡稱之圖例

BATH	Bathroom 浴室
BR	Bedroom 睡房
CARPORT	Carport 車房
DN	Down 向下
FS PUMP RM	Fire Services Water Tank & Pump Room 消防水缸及水泵房
FILTRATION PLANT RM	Filtration Plant Room 濾水機房
FLAT ROOF	Flat Roof 平台
GARDEN	Garden 花園
GAS FITTING CABINET	Gas Fitting Cabinet 氣體裝置櫃
GLASS CANOPY	Glass Canopy 玻璃簷篷
GLASS CANOPY ABOVE	Glass Canopy Above 玻璃簷篷覆蓋之部份
GLASS SKYLIGHT	Glass Skylight 玻璃天窗
GLASS SKYLIGHT ABOVE	Glass Skylight Above 玻璃天窗覆蓋之部份
GLASS SKYLIGHT FEATURE	Glass Skylight Feature 玻璃天窗組合
GLASS SKYLIGHT FEATURE ABOVE	Glass Skylight Feature Above 玻璃天窗組合覆蓋之部份
HR	Hose Reel 消防喉轆
HYDROSPA	Hydrospa 按摩浴池

KITCHEN	Kitchen 廚房
LIV & DIN RM	Living and Dining Room 客飯廳
MAID RM	Maid Room 工人房
MASTER BATH	Master Bathroom 主人浴室
MASTER BR	Master Bedroom 主人睡房
MOTOR CYCLE PARKING SPACE	Motor Cycle Parking Space 電單車停車位
NON-BUILDING AREA	Non-Building Area 非建築用地
PD	Pipe Duct 管道槽
PLANTER	Planter 花槽
POWDER RM	Powder Room 化妝間
ROOF	Roof 天台
STAIRHOOD	Stairhood 梯屋
SWIMMING POOL	Swimming Pool 游泳池
SWITCH RM	Switch Room 電掣房
TOILET	Toilet 廁所
UP	Up 向上
WATER TANK & PUMP RM	Potable & Flushing Water Tank & Pump Room 食用及沖廁水缸及水泵房

FLOOR PLANS OF RESIDENTIAL PROPERTIES IN THE DEVELOPMENT 發展項目的住宅物業的樓面平面圖

VILLAA 洋房 A



The thickness of the floor slabs (excluding plaster) (mm) :
樓板 (不包括灰泥) 的厚度 (毫米) :

G/F
地面層 150

1/F
1 樓 150, 160, 180

Roof
天台 150, 160, 200

The floor-to-floor height of each floor (mm) :
每個樓層的層與層之間的高度 (毫米) :

G/F
地面層 3,050

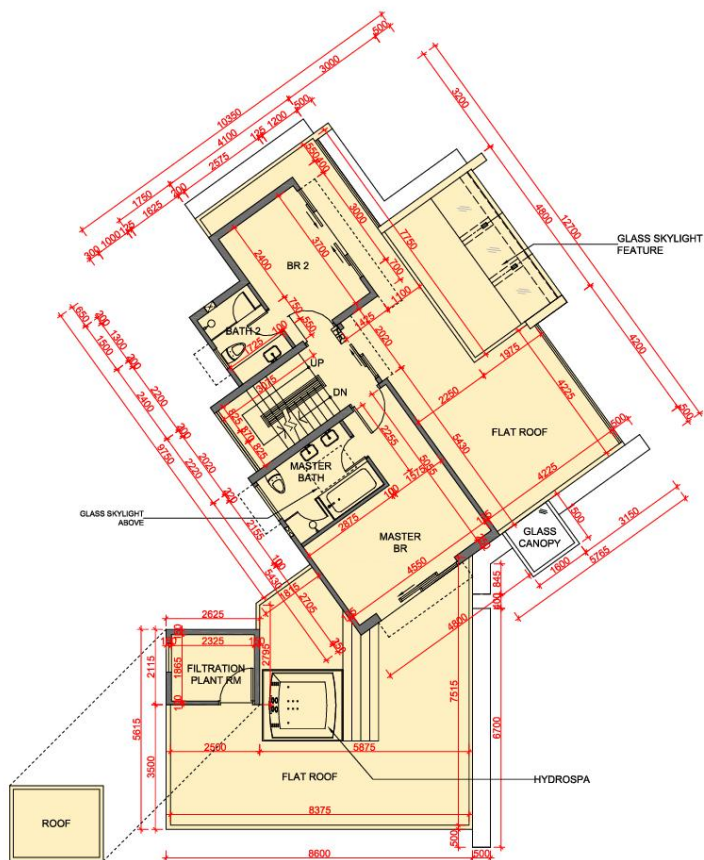
1/F
1 樓 2,800

- Note :
- (1) The internal areas of the house on the upper floors will generally be slightly larger than those on the lower floors because of the reducing thickness of the structural walls on the upper floors.
 - (2) Please refer to page XI - 1 of this sales brochure for legend of the terms and abbreviations shown on the floor plans.

- 備註 :
- (1) 因住宅洋房的較高樓層的結構牆的厚度遞減, 較高樓層的內部面積, 一般比較低樓層的內部面積稍大。
 - (2) 平面圖中顯示之名稱及簡稱請參閱本售樓說明書第 XI - 1 頁。

FLOOR PLANS OF RESIDENTIAL PROPERTIES IN THE DEVELOPMENT 發展項目的住宅物業的樓面平面圖

VILLAA 洋房 A



FIRST FLOOR PLAN
1樓平面圖



The thickness of the floor slabs (excluding plaster) (mm) :
樓板 (不包括灰泥) 的厚度 (毫米) :

G/F 地面層	150
1/F 1 樓	150, 160, 180
Roof 天台	150, 160, 200

The floor-to-floor height of each floor (mm) :
每個樓層的層與層之間的高度 (毫米) :

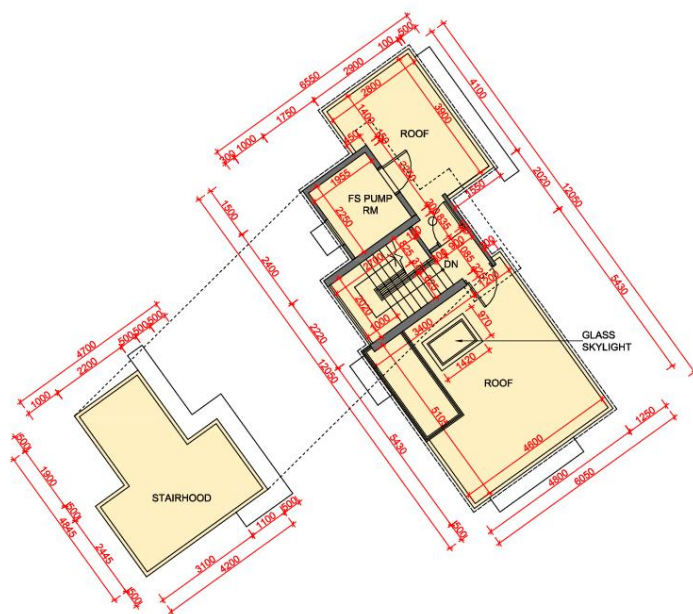
G/F 地面層	3,050
1/F 1 樓	2,800

- Note :
- (1) The internal areas of the house on the upper floors will generally be slightly larger than those on the lower floors because of the reducing thickness of the structural walls on the upper floors.
 - (2) Please refer to page XI - 1 of this sales brochure for legend of the terms and abbreviations shown on the floor plans.

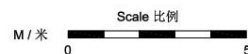
- 備註 :
- (1) 因住宅洋房的較高樓層的結構牆的厚度遞減, 較高樓層的內部面積, 一般比較低樓層的內部面積稍大。
 - (2) 平面圖中顯示之名稱及簡稱請參閱本售樓說明書第 XI - 1 頁。

FLOOR PLANS OF RESIDENTIAL PROPERTIES IN THE DEVELOPMENT 發展項目的住宅物業的樓面平面圖

VILLAA 洋房 A



ROOF PLAN
天台平面圖



The thickness of the floor slabs (excluding plaster) (mm) :
樓板 (不包括灰泥) 的厚度 (毫米) :

G/F 地面層	150
1/F 1 樓	150, 160, 180
Roof 天台	150, 160, 200

The floor-to-floor height of each floor (mm) :
每個樓層的層與層之間的高度 (毫米) :

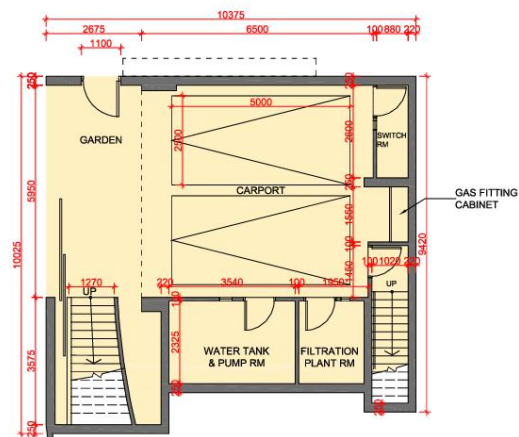
G/F 地面層	3,050
1/F 1 樓	2,800

- Note :
- (1) The internal areas of the house on the upper floors will generally be slightly larger than those on the lower floors because of the reducing thickness of the structural walls on the upper floors.
 - (2) Please refer to page XI - 1 of this sales brochure for legend of the terms and abbreviations shown on the floor plans.

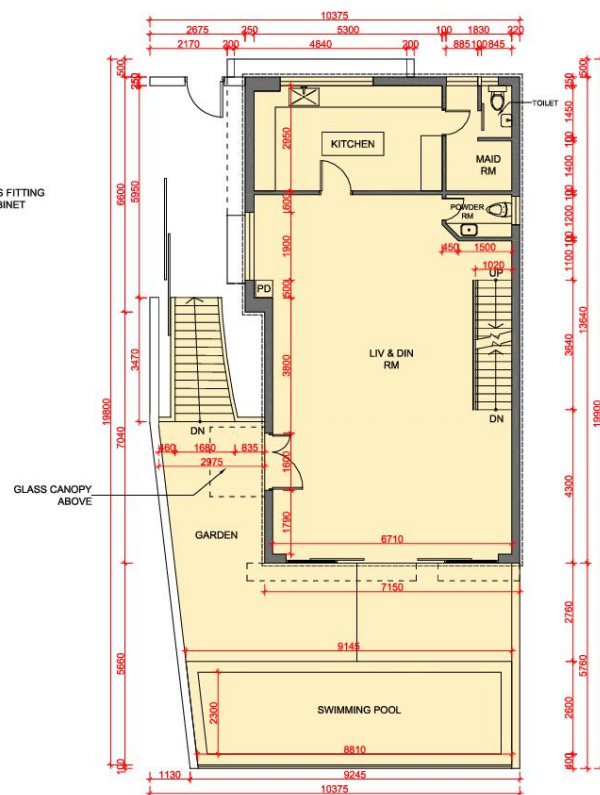
- 備註 :
- (1) 因住宅洋房的較高樓層的結構牆的厚度遞減, 較高樓層的內部面積, 一般比較低樓層的內部面積稍大。
 - (2) 平面圖中顯示之名詞及簡稱請參閱本售樓說明書第 XI - 1 頁。

FLOOR PLANS OF RESIDENTIAL PROPERTIES IN THE DEVELOPMENT 發展項目的住宅物業的樓面平面圖

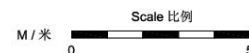
VILLA B 洋房 B



GROUND FLOOR PLAN
地面層平面圖



FIRST FLOOR PLAN
1樓平面圖



The thickness of the floor slabs (excluding plaster) (mm) :
樓板 (不包括灰泥) 的厚度 (毫米) :

G/F 地面層	150
1/F 1 樓	150, 160, 175, 200
2/F 2 樓	150, 200
Roof 天台	150, 200

The floor-to-floor height of each floor (mm) :
每個樓層的層與層之間的高度 (毫米) :

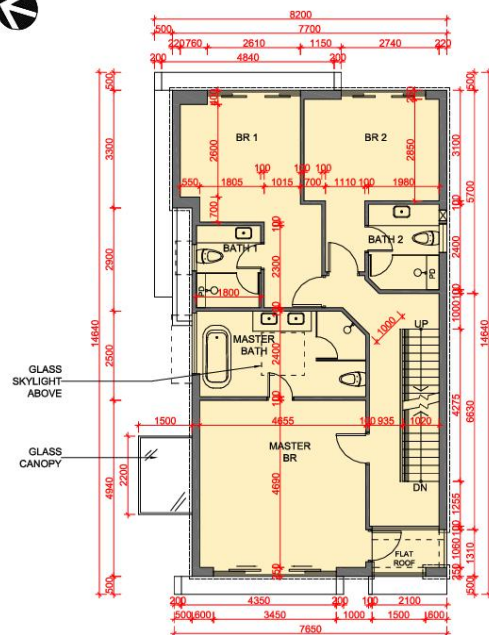
G/F 地面層	2,900
1/F 1 樓	3,300
2/F 2 樓	2,800

- Note :
- (1) The internal areas of the house on the upper floors will generally be slightly larger than those on the lower floors because of the reducing thickness of the structural walls on the upper floors.
 - (2) Please refer to page XI - 1 of this sales brochure for legend of the terms and abbreviations shown on the floor plans.

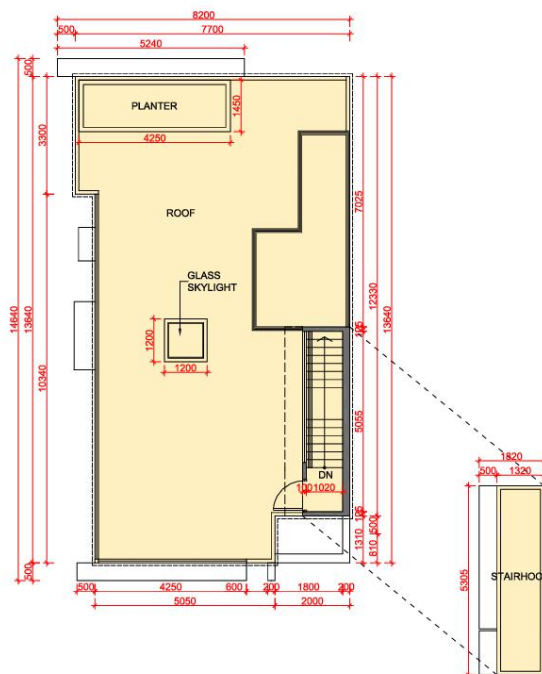
- 備註:
- (1) 因住宅洋房的較高樓層的結構牆的厚度遞減, 較高樓層的內部面積, 一般比較低樓層的內部面積稍大。
 - (2) 平面圖中顯示之名詞及簡稱請參閱本售樓說明書第 XI - 1 頁。

FLOOR PLANS OF RESIDENTIAL PROPERTIES IN THE DEVELOPMENT 發展項目的住宅物業的樓面平面圖

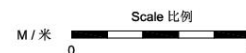
VILLA B 洋房 B



SECOND FLOOR PLAN
2樓平面圖



ROOF PLAN
天台平面圖



The thickness of the floor slabs (excluding plaster) (mm) :
樓板 (不包括灰泥) 的厚度 (毫米) :

G/F 地面層	150
1/F 1 樓	150, 160, 175, 200
2/F 2 樓	150, 200
Roof 天台	150, 200

The floor-to-floor height of each floor (mm) :
每個樓層的層與層之間的高度 (毫米) :

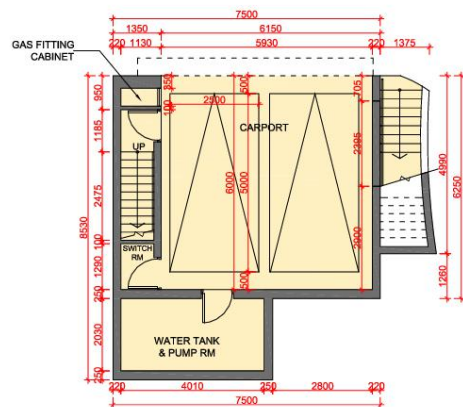
G/F 地面層	2,900
1/F 1 樓	3,300
2/F 2 樓	2,800

- Note :
- (1) The internal areas of the house on the upper floors will generally be slightly larger than those on the lower floors because of the reducing thickness of the structural walls on the upper floors.
 - (2) Please refer to page XI - 1 of this sales brochure for legend of the terms and abbreviations shown on the floor plans.

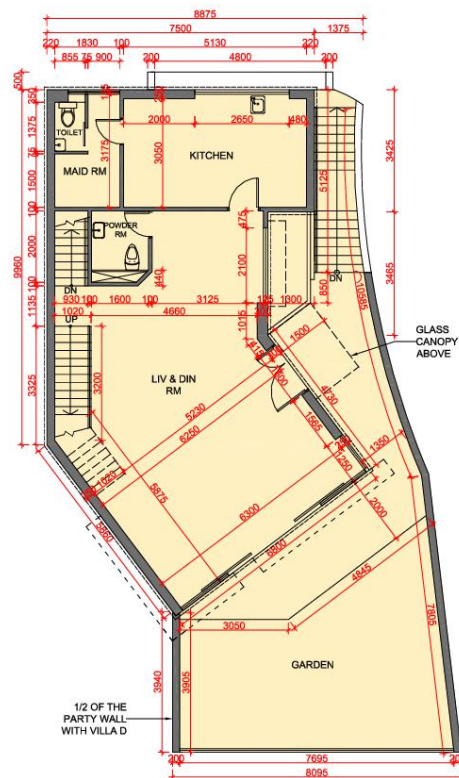
- 備註:
- (1) 因住宅洋房的較高樓層的結構牆的厚度遞減, 較高樓層的內部面積, 一般比較低樓層的內部面積稍大。
 - (2) 平面圖中顯示之名詞及簡稱請參閱本售樓說明書第 XI - 1 頁。

FLOOR PLANS OF RESIDENTIAL PROPERTIES IN THE DEVELOPMENT 發展項目的住宅物業的樓面平面圖

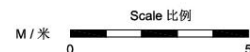
VILLAC 洋房 C



GROUND FLOOR PLAN
地面層平面圖



FIRST FLOOR PLAN
1樓平面圖



The thickness of the floor slabs (excluding plaster) (mm) :
樓板 (不包括灰泥) 的厚度 (毫米) :

G/F 地面層	150
1/F 1 樓	150, 200
2/F 2 樓	150, 200
Roof 天台	150, 180, 200

The floor-to-floor height of each floor (mm) :
每個樓層的層與層之間的高度 (毫米) :

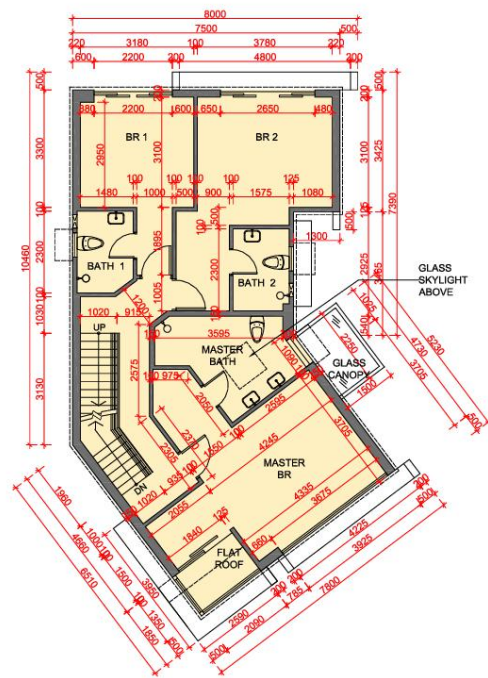
G/F 地面層	2,900
1/F 1 樓	3,300
2/F 2 樓	2,800

- Note :
- (1) The internal areas of the house on the upper floors will generally be slightly larger than those on the lower floors because of the reducing thickness of the structural walls on the upper floors.
 - (2) Please refer to page XI - 1 of this sales brochure for legend of the terms and abbreviations shown on the floor plans.

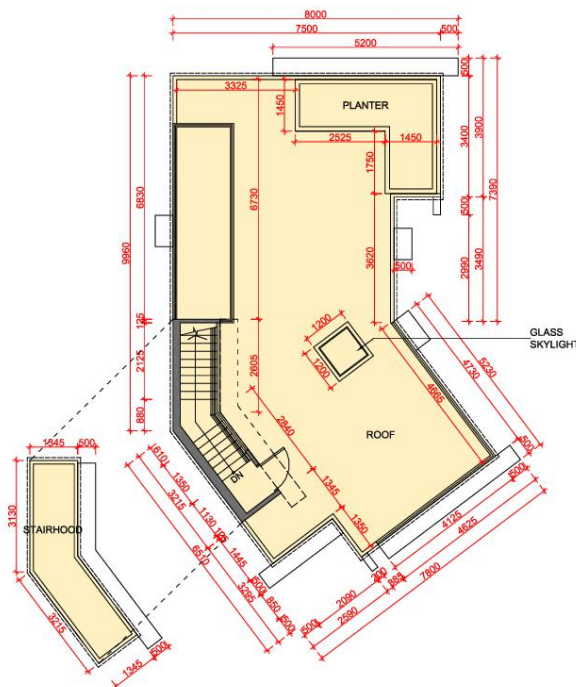
- 備註 :
- (1) 因住宅洋房的較高樓層的結構牆的厚度遞減, 較高樓層的內部面積, 一般比較低樓層的內部面積稍大。
 - (2) 平面圖中顯示之名詞及簡稱請參閱本售樓說明書第 XI - 1 頁。

FLOOR PLANS OF RESIDENTIAL PROPERTIES IN THE DEVELOPMENT 發展項目的住宅物業的樓面平面圖

VILLAC 洋房 C



SECOND FLOOR PLAN
2樓平面圖



ROOF PLAN
天台平面圖



The thickness of the floor slabs (excluding plaster) (mm) :
樓板 (不包括灰泥) 的厚度 (毫米) :

G/F 地面層	150
1/F 1 樓	150, 200
2/F 2 樓	150, 200
Roof 天台	150, 180, 200

The floor-to-floor height of each floor (mm) :
每個樓層的層與層之間的高度 (毫米) :

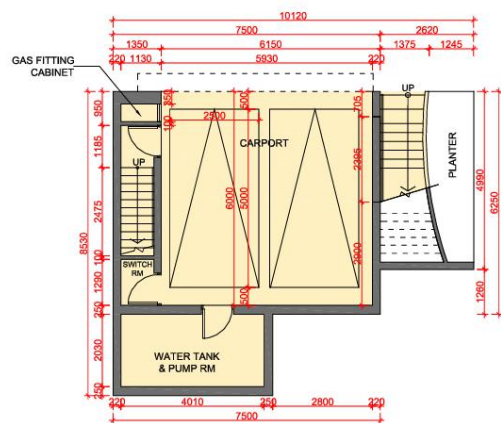
G/F 地面層	2,900
1/F 1 樓	3,300
2/F 2 樓	2,800

- Note :
- (1) The internal areas of the house on the upper floors will generally be slightly larger than those on the lower floors because of the reducing thickness of the structural walls on the upper floors.
 - (2) Please refer to page XI - 1 of this sales brochure for legend of the terms and abbreviations shown on the floor plans.

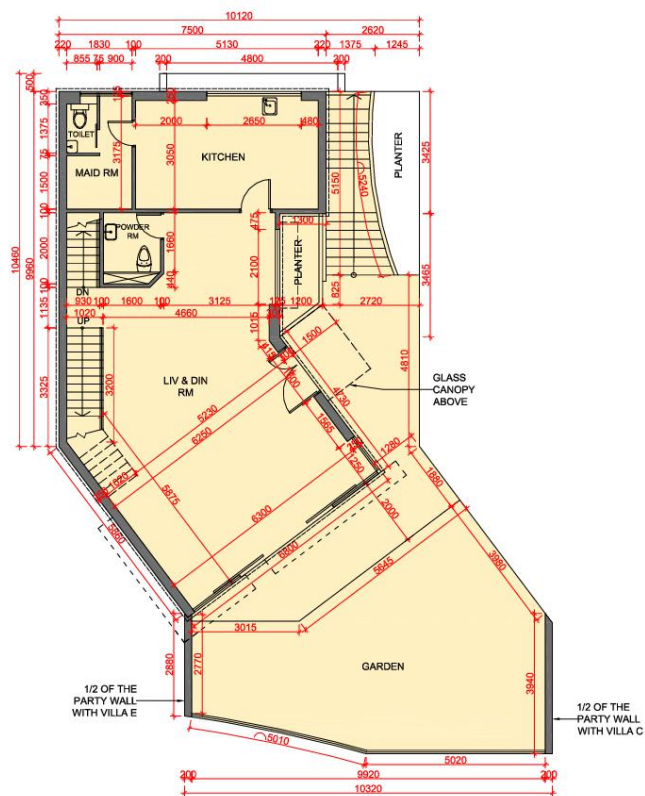
- 備註 :
- (1) 因住宅洋房的較高樓層的結構牆的厚度遞減, 較高樓層的內部面積, 一般比較低樓層的內部面積稍大。
 - (2) 平面圖中顯示之名詞及簡稱請參閱本售樓說明書第 XI - 1 頁。

FLOOR PLANS OF RESIDENTIAL PROPERTIES IN THE DEVELOPMENT 發展項目的住宅物業的樓面平面圖

VILLAD 洋房 D



GROUND FLOOR PLAN
地面層平面圖



FIRST FLOOR PLAN
1樓平面圖

The thickness of the floor slabs (excluding plaster) (mm) :
樓板 (不包括灰泥) 的厚度 (毫米) :

G/F 地面層	150
1/F 1 樓	150, 200
2/F 2 樓	150, 200
Roof 天台	150, 180, 200

The floor-to-floor height of each floor (mm) :
每個樓層的層與層之間的高度 (毫米) :

G/F 地面層	2,900
1/F 1 樓	3,300
2/F 2 樓	2,800

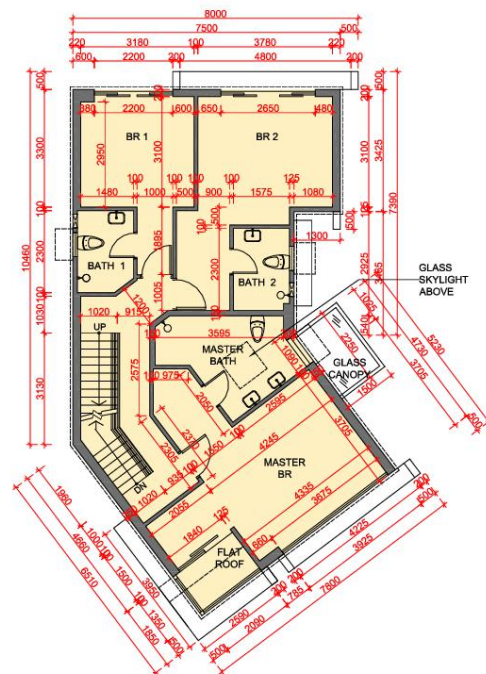
- Note :
- (1) The internal areas of the house on the upper floors will generally be slightly larger than those on the lower floors because of the reducing thickness of the structural walls on the upper floors.
 - (2) Please refer to page XI - 1 of this sales brochure for legend of the terms and abbreviations shown on the floor plans.

- 備註 :
- (1) 因住宅洋房的較高樓層的結構牆的厚度遞減, 較高樓層的內部面積, 一般比較低樓層的內部面積稍大。
 - (2) 平面圖中顯示之名稱及簡稱請參閱本售樓說明書第 XI - 1 頁。

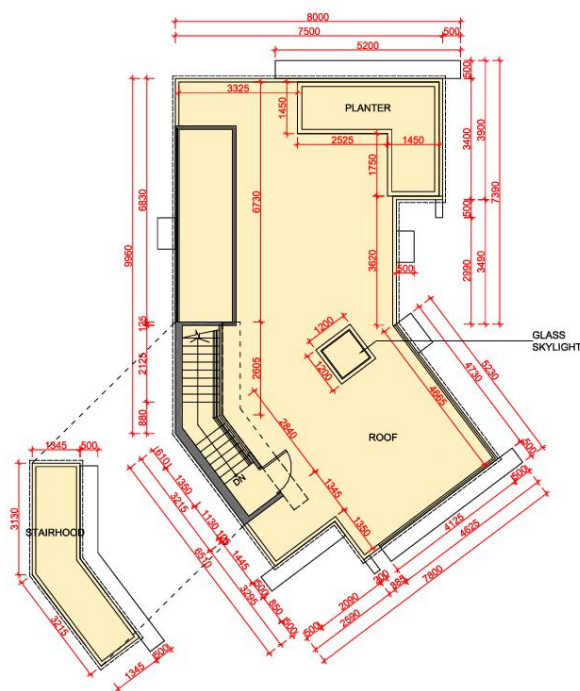


FLOOR PLANS OF RESIDENTIAL PROPERTIES IN THE DEVELOPMENT 發展項目的住宅物業的樓面平面圖

VILLAD 洋房 D



SECOND FLOOR PLAN
2樓平面圖



ROOF PLAN
天台平面圖

The thickness of the floor slabs (excluding plaster) (mm) :
樓板 (不包括灰泥) 的厚度 (毫米) :

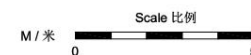
G/F 地面層	150
1/F 1 樓	150, 200
2/F 2 樓	150, 200
Roof 天台	150, 180, 200

The floor-to-floor height of each floor (mm) :
每個樓層的層與層之間的高度 (毫米) :

G/F 地面層	2,900
1/F 1 樓	3,300
2/F 2 樓	2,800

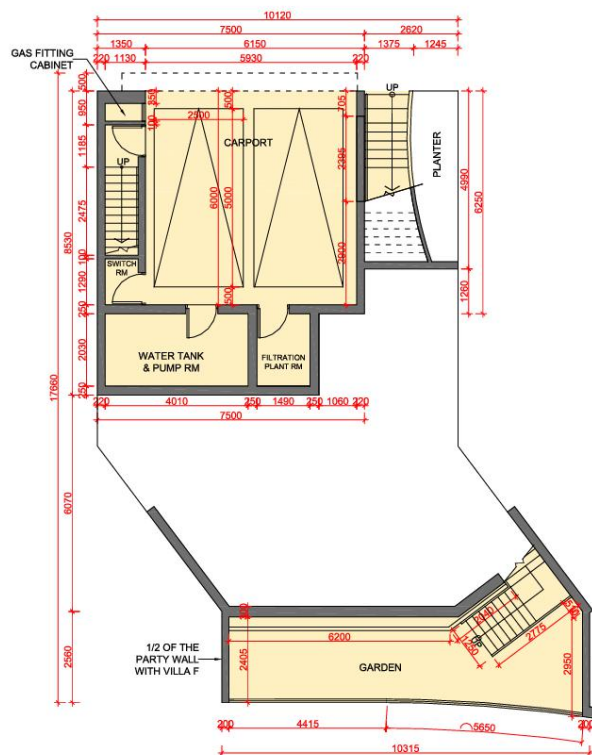
- Note :
- (1) The internal areas of the house on the upper floors will generally be slightly larger than those on the lower floors because of the reducing thickness of the structural walls on the upper floors.
 - (2) Please refer to page XI - 1 of this sales brochure for legend of the terms and abbreviations shown on the floor plans.

- 備註 :
- (1) 因住宅洋房的較高樓層的結構牆的厚度遞減, 較高樓層的內部面積, 一般比較低樓層的內部面積稍大。
 - (2) 平面圖中顯示之名稱及簡稱請參閱本售樓說明書第 XI - 1 頁。

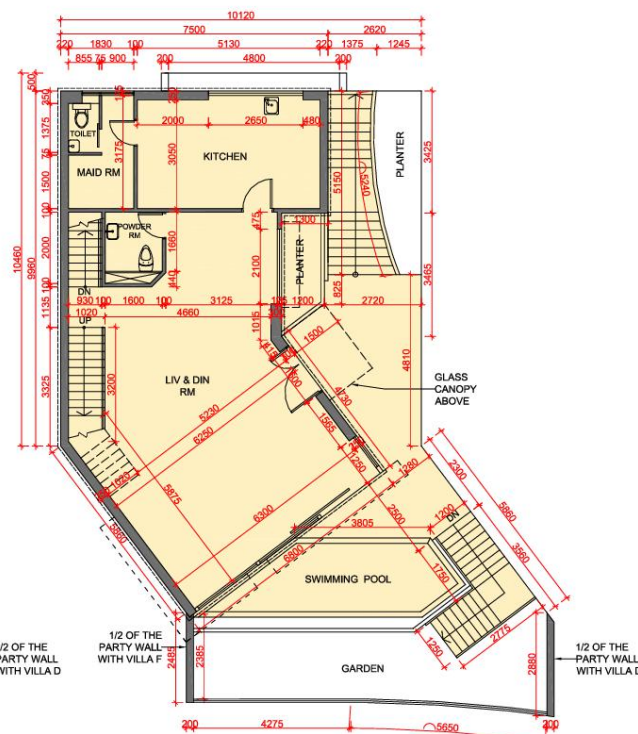


FLOOR PLANS OF RESIDENTIAL PROPERTIES IN THE DEVELOPMENT 發展項目的住宅物業的樓面平面圖

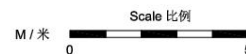
VILLAE 洋房 E



GROUND FLOOR PLAN
地面層平面圖



FIRST FLOOR PLAN
1樓平面圖



The thickness of the floor slabs (excluding plaster) (mm) :
樓板 (不包括灰泥) 的厚度 (毫米) :

G/F 地面層	150
1/F 1 樓	150, 200
2/F 2 樓	150, 200
Roof 天台	150, 180, 200

The floor-to-floor height of each floor (mm) :
每個樓層的層與層之間的高度 (毫米) :

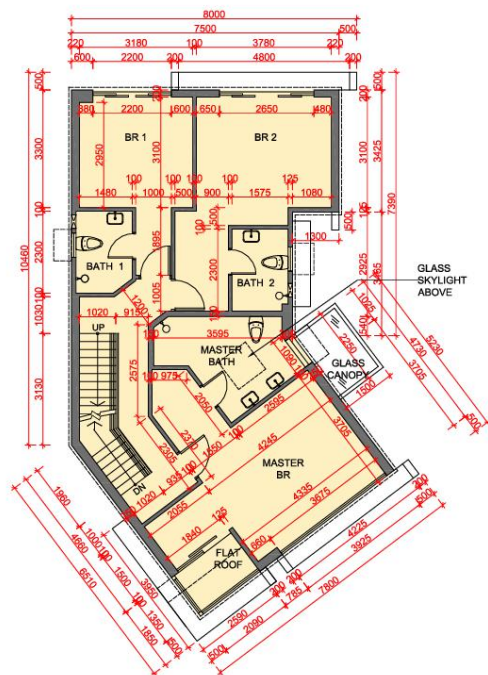
G/F 地面層	2,900
1/F 1 樓	3,300
2/F 2 樓	2,800

- Note :
- (1) The internal areas of the house on the upper floors will generally be slightly larger than those on the lower floors because of the reducing thickness of the structural walls on the upper floors.
 - (2) Please refer to page XI - 1 of this sales brochure for legend of the terms and abbreviations shown on the floor plans.

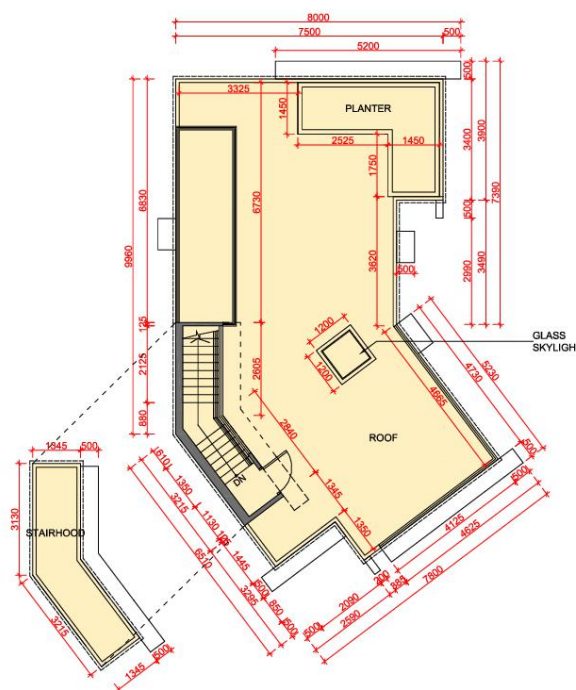
- 備註 :
- (1) 因住宅洋房的較高樓層的結構牆的厚度遞減, 較高樓層的內部面積, 一般比較低樓層的內部面積稍大。
 - (2) 平面圖中顯示之名詞及簡稱請參閱本售樓說明書第 XI - 1 頁。

FLOOR PLANS OF RESIDENTIAL PROPERTIES IN THE DEVELOPMENT 發展項目的住宅物業的樓面平面圖

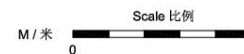
VILLAE 洋房 E



SECOND FLOOR PLAN
2樓平面圖



ROOF PLAN
天台平面圖



The thickness of the floor slabs (excluding plaster) (mm) :
樓板 (不包括灰泥) 的厚度 (毫米) :

G/F 地面層	150
1/F 1 樓	150, 200
2/F 2 樓	150, 200
Roof 天台	150, 180, 200

The floor-to-floor height of each floor (mm) :
每個樓層的層與層之間的高度 (毫米) :

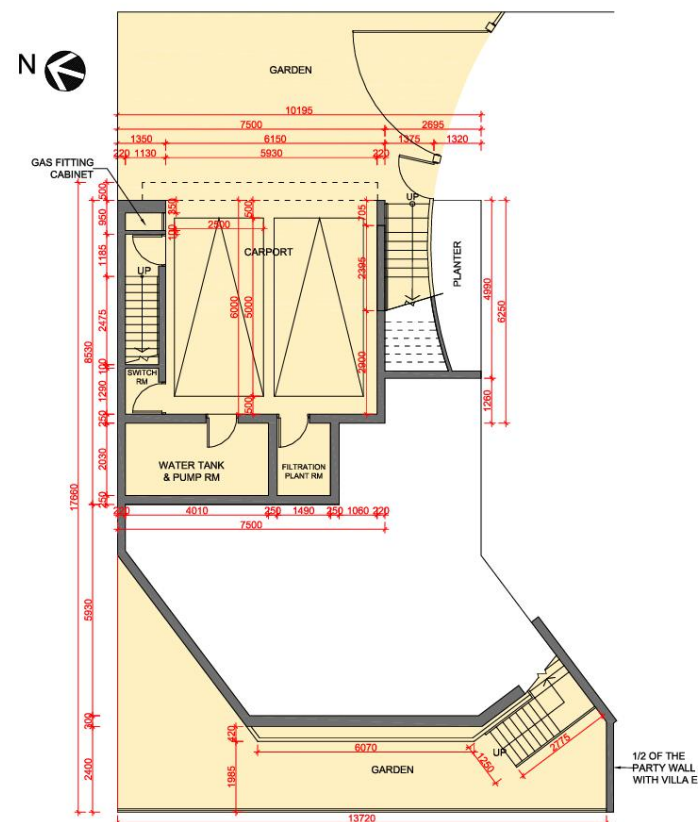
G/F 地面層	2,900
1/F 1 樓	3,300
2/F 2 樓	2,800

- Note :
- (1) The internal areas of the house on the upper floors will generally be slightly larger than those on the lower floors because of the reducing thickness of the structural walls on the upper floors.
 - (2) Please refer to page XI - 1 of this sales brochure for legend of the terms and abbreviations shown on the floor plans.

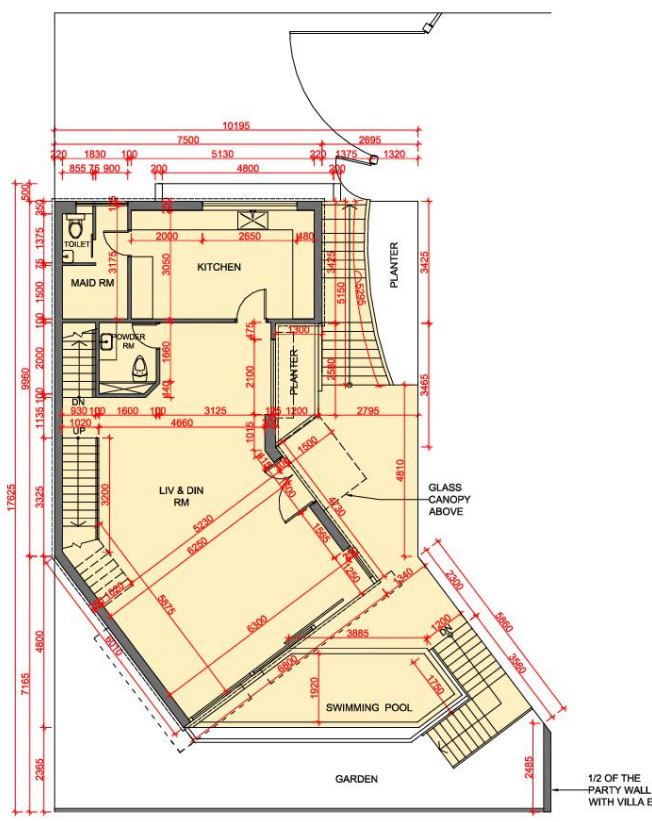
- 備註 :
- (1) 因住宅洋房的較高樓層的結構牆的厚度遞減, 較高樓層的內部面積, 一般比較低樓層的內部面積稍大。
 - (2) 平面圖中顯示之名詞及簡稱請參閱本售樓說明書第 XI - 1 頁。

FLOOR PLANS OF RESIDENTIAL PROPERTIES IN THE DEVELOPMENT 發展項目的住宅物業的樓面平面圖

VILLA F 洋房 F



GROUND FLOOR PLAN
地面層平面圖



FIRST FLOOR PLAN
1樓平面圖

The thickness of the floor slabs (excluding plaster) (mm) :
樓板 (不包括灰泥) 的厚度 (毫米) :

G/F 地面層	150
1/F 1 樓	150, 200
2/F 2 樓	150, 200
Roof 天台	150, 180, 200

The floor-to-floor height of each floor (mm) :
每個樓層的層與層之間的高度 (毫米) :

G/F 地面層	2,900
1/F 1 樓	3,300
2/F 2 樓	2,800

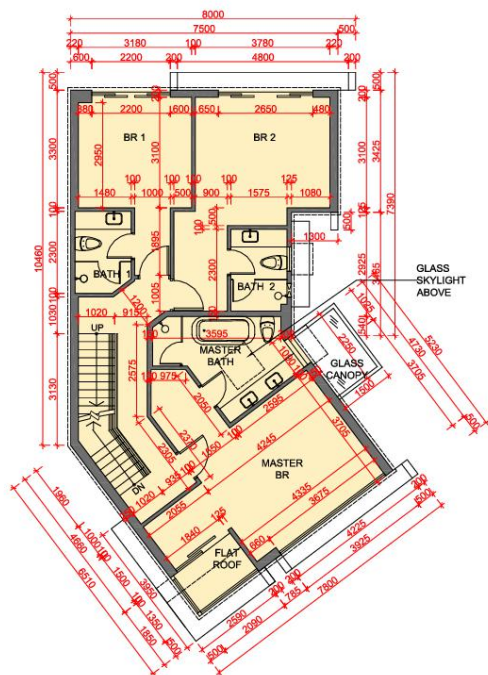
Note : (1) The internal areas of the house on the upper floors will generally be slightly larger than those on the lower floors because of the reducing thickness of the structural walls on the upper floors.
(2) Please refer to page XI - 1 of this sales brochure for legend of the terms and abbreviations shown on the floor plans.

備註 : (1) 因住宅洋房的較高樓層的結構牆的厚度遞減, 較高樓層的內部面積, 一般比較低樓層的內部面積稍大。
(2) 平面圖中顯示之名詞及簡稱請參閱本售樓說明書第 XI - 1 頁。

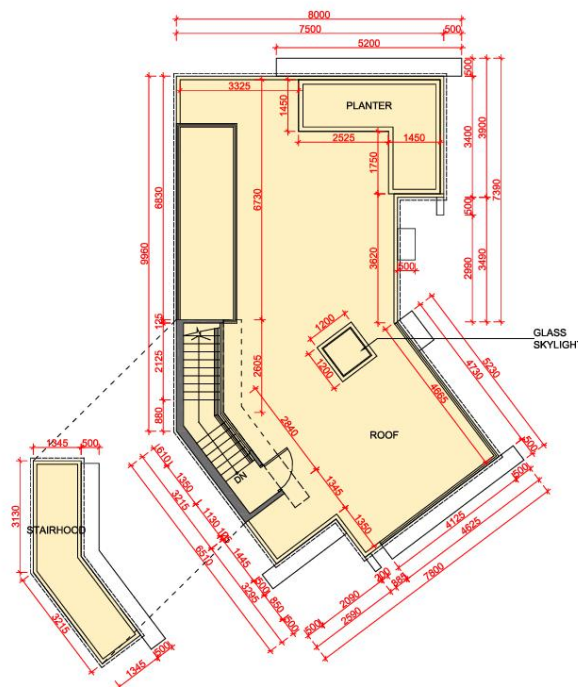
Scale 比例
M / 米
0 5

FLOOR PLANS OF RESIDENTIAL PROPERTIES IN THE DEVELOPMENT 發展項目的住宅物業的樓面平面圖

VILLA F 洋房 F



SECOND FLOOR PLAN
2樓平面圖



ROOF PLAN
天台平面圖

The thickness of the floor slabs (excluding plaster) (mm) :
樓板 (不包括灰泥) 的厚度 (毫米) :

G/F 地面層	150
1/F 1 樓	150, 200
2/F 2 樓	150, 200
Roof 天台	150, 180, 200

The floor-to-floor height of each floor (mm) :
每個樓層的層與層之間的高度 (毫米) :

G/F 地面層	2,900
1/F 1 樓	3,300
2/F 2 樓	2,800

- Note :
- (1) The internal areas of the house on the upper floors will generally be slightly larger than those on the lower floors because of the reducing thickness of the structural walls on the upper floors.
 - (2) Please refer to page XI - 1 of this sales brochure for legend of the terms and abbreviations shown on the floor plans.

- 備註 :
- (1) 因住宅洋房的較高樓層的結構牆的厚度遞減, 較高樓層的內部面積, 一般比較低樓層的內部面積稍大。
 - (2) 平面圖中顯示之名詞及簡稱請參閱本售樓說明書第 XI - 1 頁。

