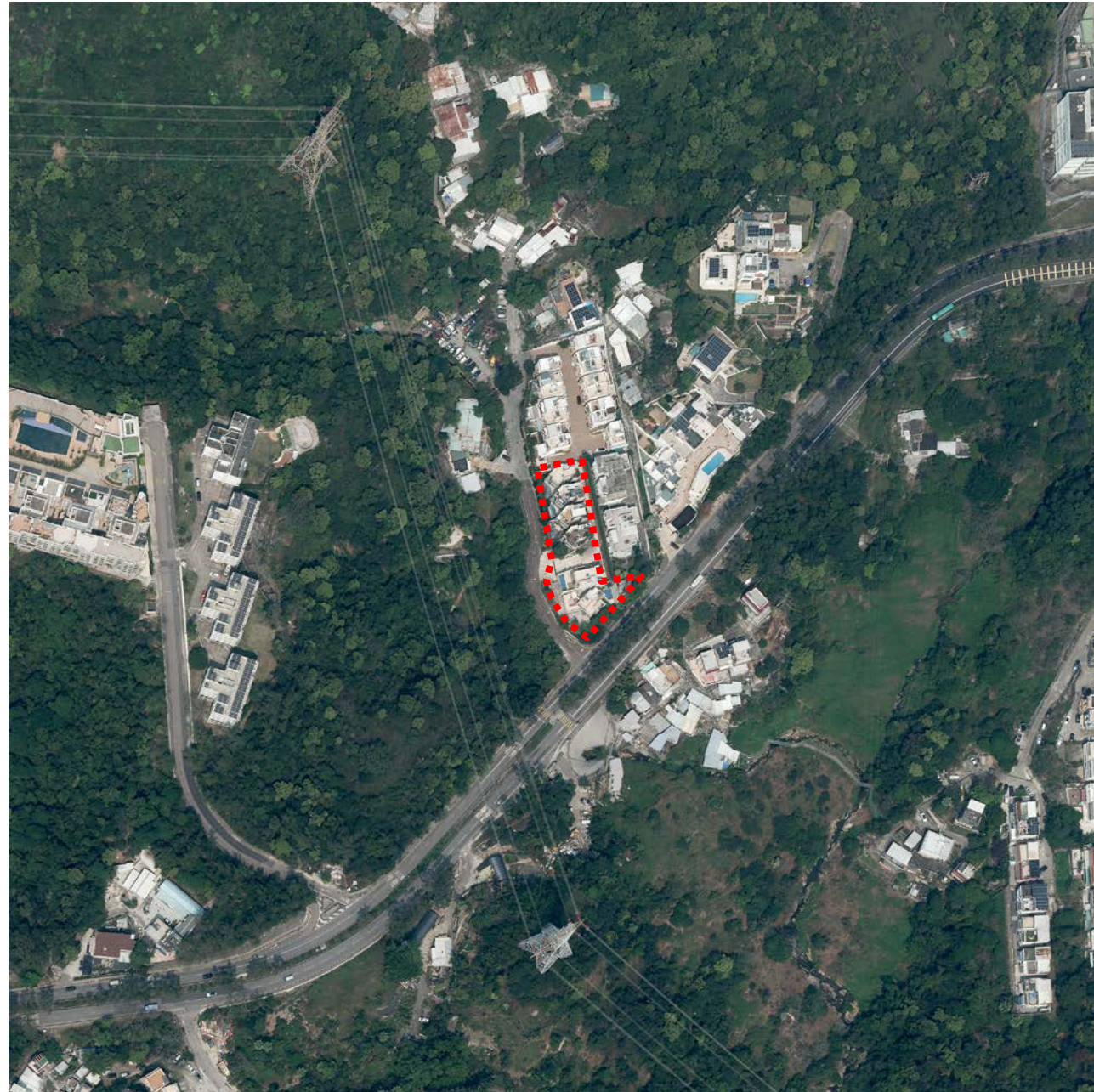


## AERIAL PHOTOGRAPH OF THE DEVELOPMENT 發展項目的鳥瞰照片



Adopted from part of the aerial photograph taken by the Survey and Mapping Office of the Lands Department at a flying height of 6,000 feet, photo No. E218465C, date of flight : 8<sup>th</sup> March 2024.

摘錄自地政總署測繪處在 6,000 呎的飛行高度拍攝之鳥瞰照片，照片編號 E218465C，飛行日期：2024 年 3 月 8 日。

Survey and Mapping Office, Lands Department, The Government of HKSAR © Copyright reserved – reproduction by permission only.

香港特別行政區政府地政總署測繪處©版權所有，未經許可，不得複製。



Location of the Development 發展項目的所在位置

Notes :

備註：

1. The Vendor advises prospective purchasers to conduct an on-site visit for a better understanding of the Development site, its surrounding environment and the public facilities nearby.  
賣方建議準買家到有關發展地盤作實地考察，以對該發展地盤、其周邊地區環境及附近的公共設施有較佳了解。
2. This aerial photograph may show more than required under the Residential Properties (First-hand Sales) Ordinance due to technical reason that the boundary of the Development is irregular.  
由於發展項目的邊界不規則的技術原因，此鳥瞰照片所顯示的範圍可能超過《一手住宅物業銷售條例》所規定的範圍。
3. Copy of the aerial photograph of the Development is available for free inspection at the sales office during opening hours.  
發展項目的鳥瞰照片之副本可於售樓處開放時間內免費查閱。