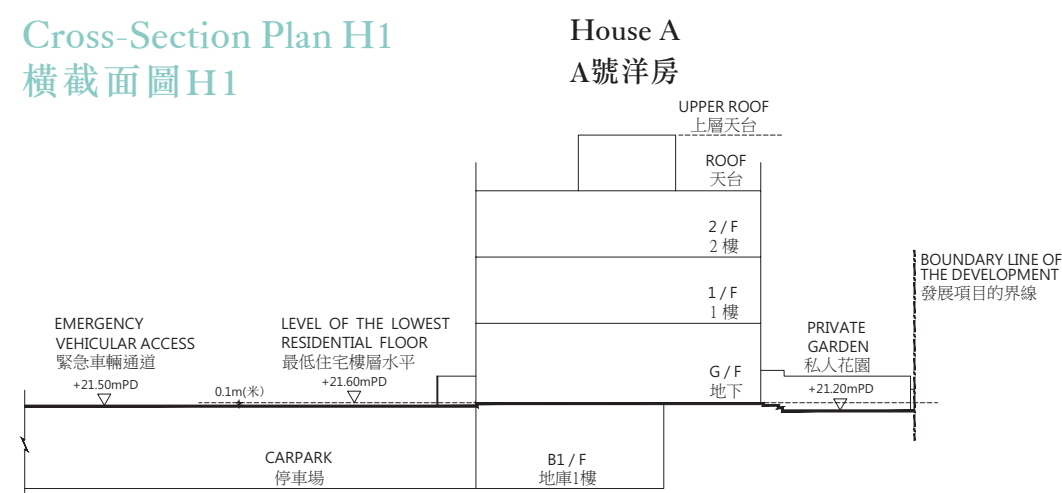
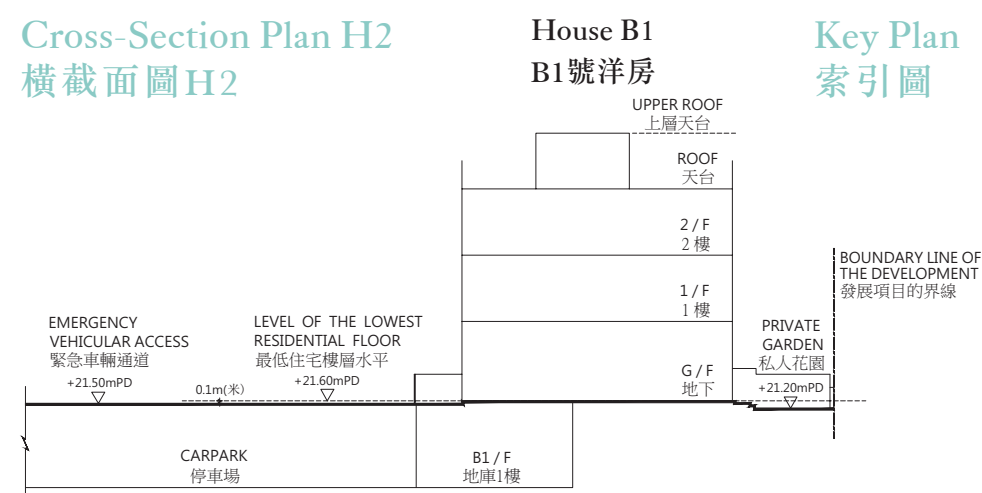
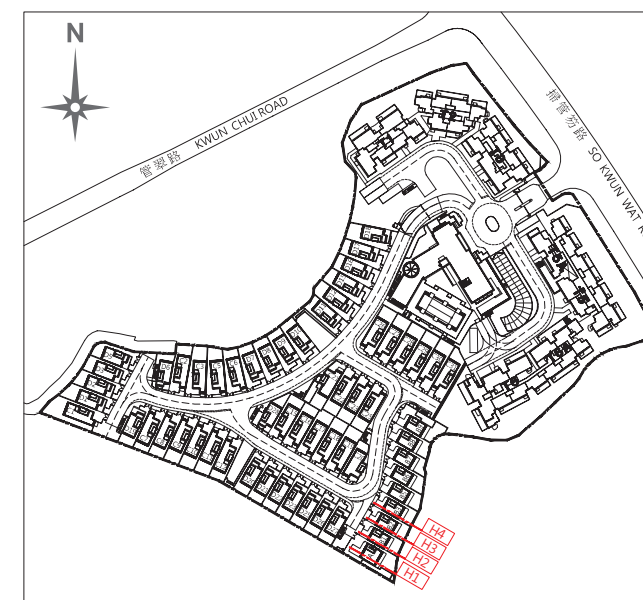


Cross-Section Plan H1  
橫截面圖H1

- The part of the Emergency Vehicular Access adjacent to House A is 21.50 metres above the Hong Kong Principal Datum.  
毗連A號洋房的一段緊急車輛通道為香港主水平基準以上21.50米。
- Dotted line denotes the lowest residential floor.  
虛線為最低住宅樓層水平。

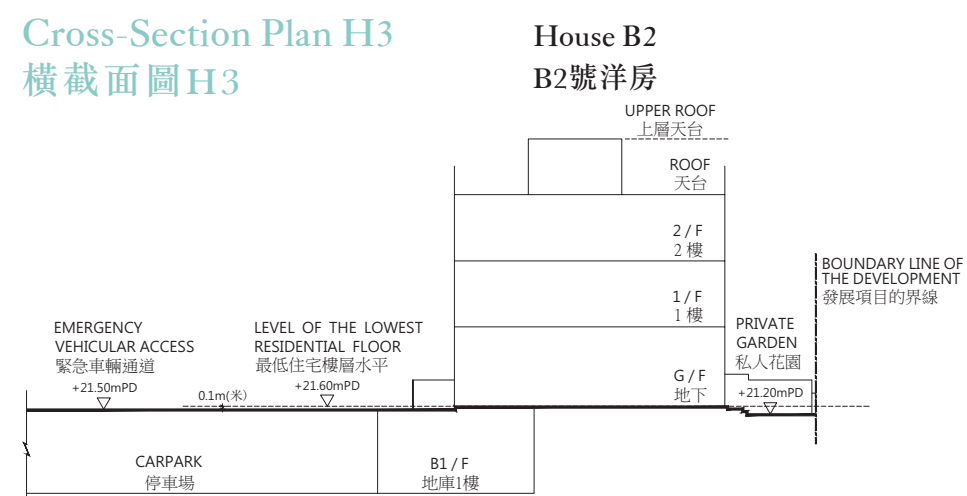
Cross-Section Plan H2  
橫截面圖H2

- The part of the Emergency Vehicular Access adjacent to House B1 is 21.50 metres above the Hong Kong Principal Datum.  
毗連B1號洋房的一段緊急車輛通道為香港主水平基準以上21.50米。
- Dotted line denotes the lowest residential floor.  
虛線為最低住宅樓層水平。

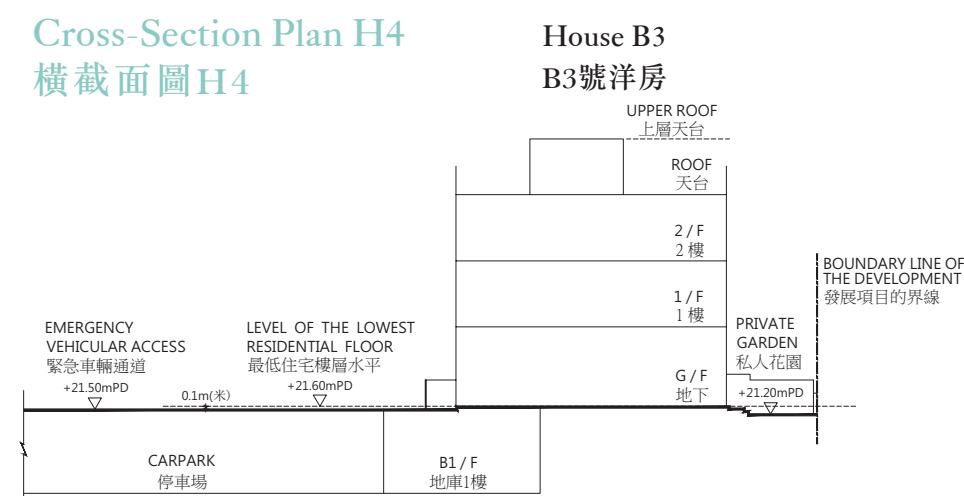
Key Plan  
索引圖

Legend 圖例：

- ▽ Height in metres above Hong Kong Principal Datum (HKPD).  
香港主水平基準以上高度(米)。

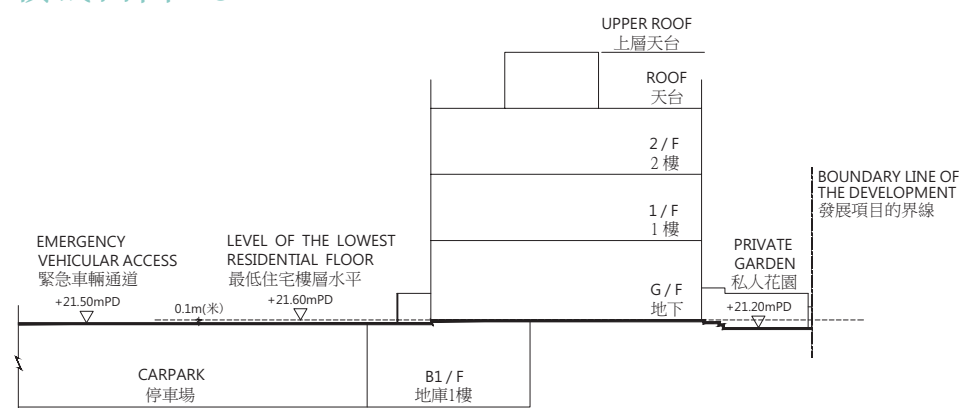
Cross-Section Plan H3  
橫截面圖H3

- The part of the Emergency Vehicular Access adjacent to House B2 is 21.50 metres above the Hong Kong Principal Datum.  
毗連B2號洋房的一段緊急車輛通道為香港主水平基準以上21.50米。
- Dotted line denotes the lowest residential floor.  
虛線為最低住宅樓層水平。

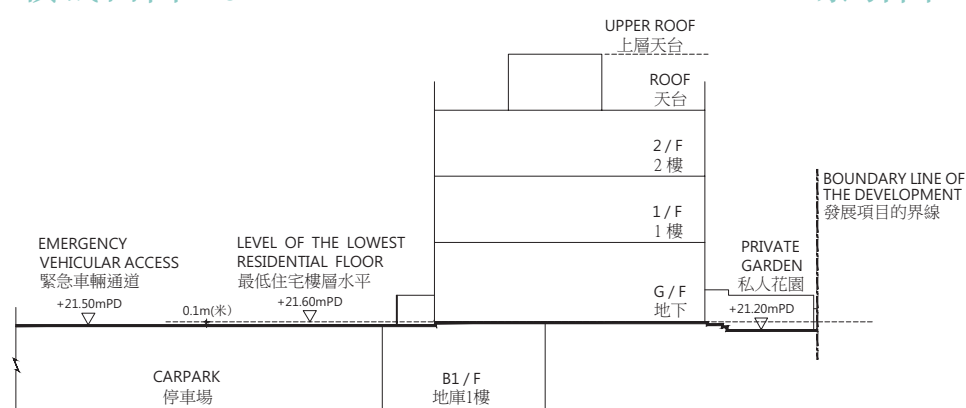
Cross-Section Plan H4  
橫截面圖H4

- The part of the Emergency Vehicular Access adjacent to House B3 is 21.50 metres above the Hong Kong Principal Datum.  
毗連B3號洋房的一段緊急車輛通道為香港主水平基準以上21.50米。
- Dotted line denotes the lowest residential floor.  
虛線為最低住宅樓層水平。

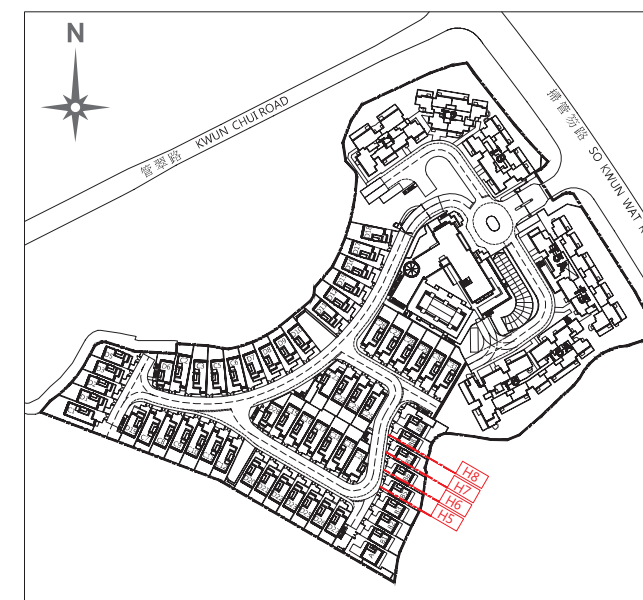
\* The levels are based on the survey as carried out by the chartered land surveyor, Patrick Yuen Land Surveyor Co.Ltd. on 31 May 2016.  
水平基準根據特許土地測量師，阮步臻土地測量師行有限公司於2016年5月31日進行的測量。

Cross-Section Plan H5  
橫截面圖H5House B5  
B5號洋房

- The part of the Emergency Vehicular Access adjacent to House B5 is 21.50 metres above the Hong Kong Principal Datum.  
毗連B5號洋房的一段緊急車輛通道為香港主水平基準以上21.50米。
- Dotted line denotes the lowest residential floor.  
虛線為最低住宅樓層水平。

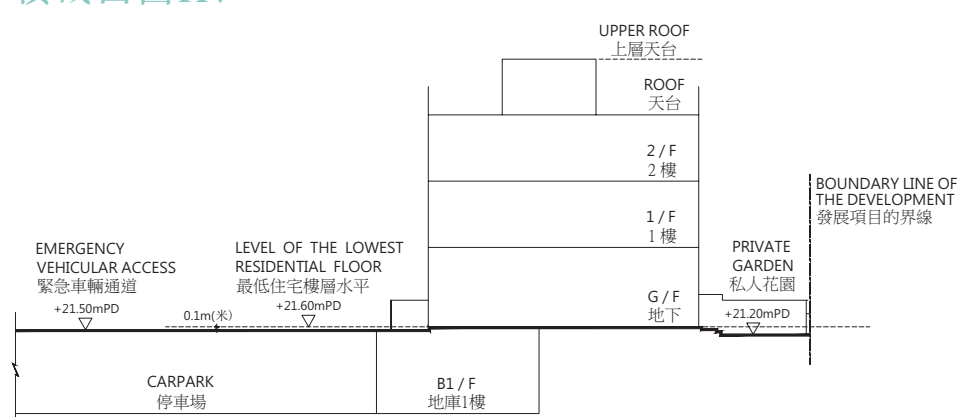
Cross-Section Plan H6  
橫截面圖H6House B6  
B6號洋房

- The part of the Emergency Vehicular Access adjacent to House B6 is 21.50 metres above the Hong Kong Principal Datum.  
毗連B6號洋房的一段緊急車輛通道為香港主水平基準以上21.50米。
- Dotted line denotes the lowest residential floor.  
虛線為最低住宅樓層水平。

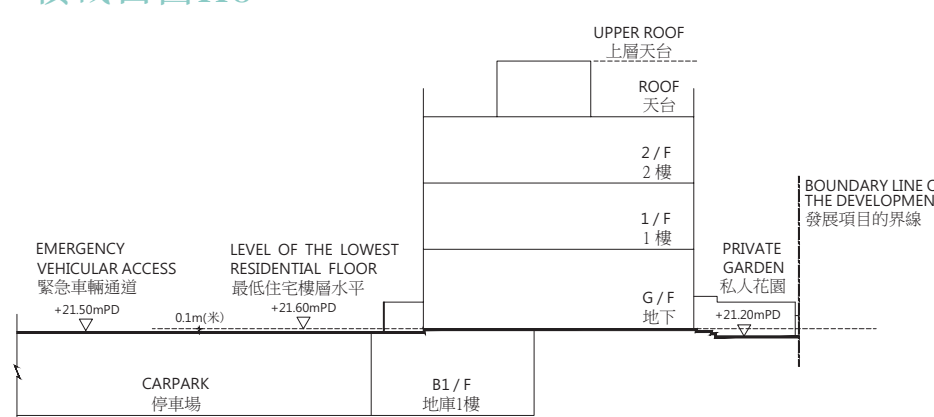
Key Plan  
索引圖

Legend 圖例：

- ▽ Height in metres above Hong Kong Principal Datum (HKPD).  
香港主水平基準以上高度(米)。

Cross-Section Plan H7  
橫截面圖H7House B7  
B7號洋房

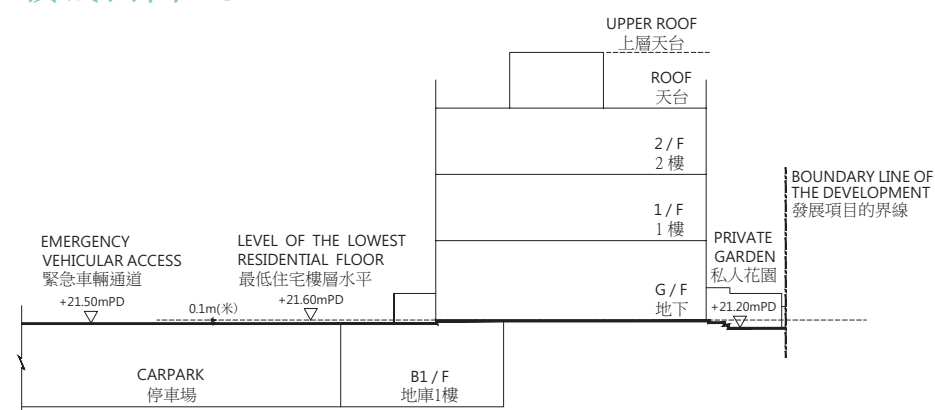
- The part of the Emergency Vehicular Access adjacent to House B7 is 21.50 metres above the Hong Kong Principal Datum.  
毗連B7號洋房的一段緊急車輛通道為香港主水平基準以上21.50米。
- Dotted line denotes the lowest residential floor.  
虛線為最低住宅樓層水平。

Cross-Section Plan H8  
橫截面圖H8House B8  
B8號洋房

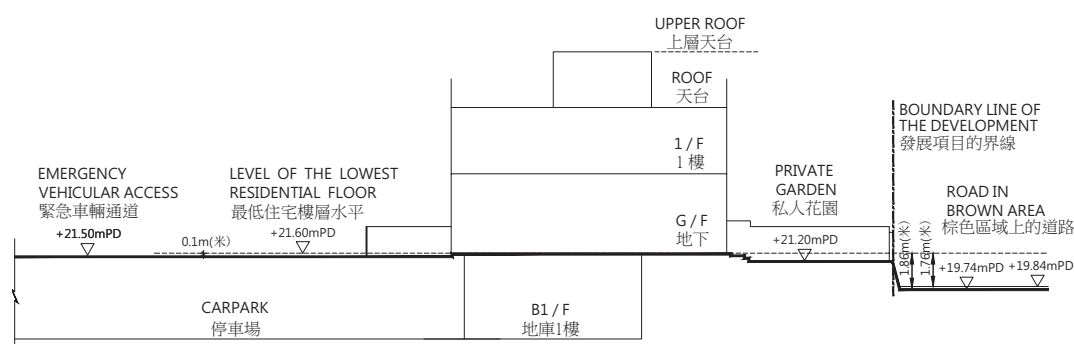
- The part of the Emergency Vehicular Access adjacent to House B8 is 21.50 metres above the Hong Kong Principal Datum.  
毗連B8號洋房的一段緊急車輛通道為香港主水平基準以上21.50米。
- Dotted line denotes the lowest residential floor.  
虛線為最低住宅樓層水平。

\* The levels are based on the survey as carried out by the chartered land surveyor, Patrick Yuen Land Surveyor Co.Ltd. on 31 May 2016.  
水平基準根據特許土地測量師，阮步臻土地測量師行有限公司於2016年5月31日進行的測量。

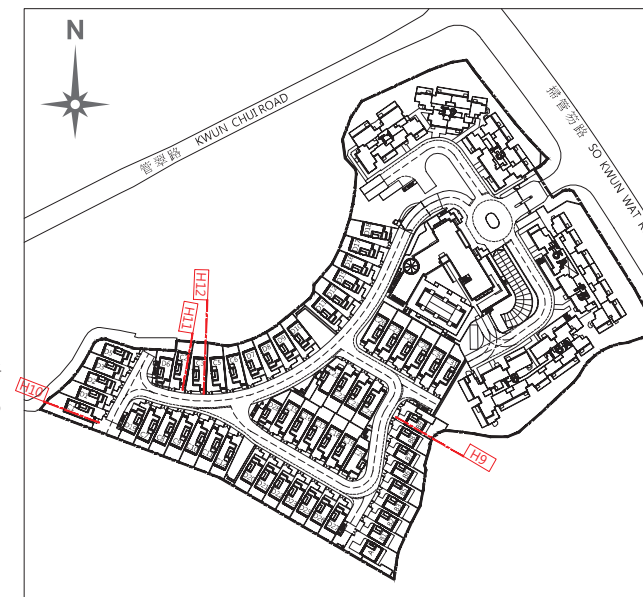


Cross-Section Plan H9  
橫截面圖H9House B9  
B9號洋房

- The part of the Emergency Vehicular Access adjacent to House B9 is 21.50 metres above the Hong Kong Principal Datum.  
毗連B9號洋房的一段緊急車輛通道為香港主水平基準以上21.50米。
- Dotted line denotes the lowest residential floor.  
虛線為最低住宅樓層水平。

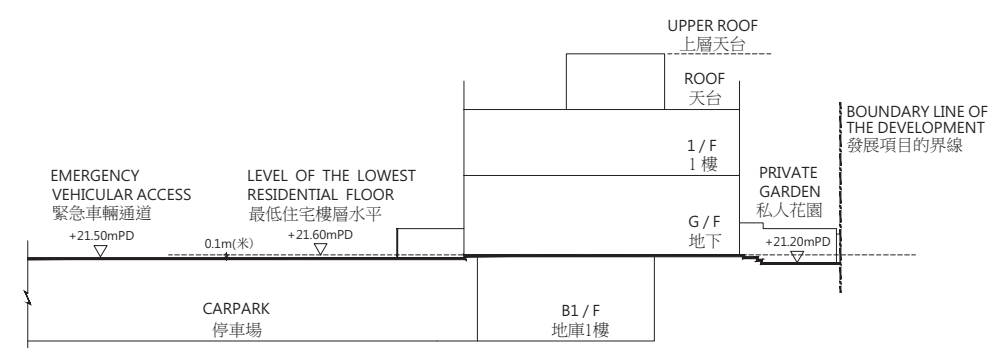
Cross-Section Plan H10  
橫截面圖H10House C1  
C1號洋房

- The part of the Emergency Vehicular Access adjacent to House C1 is 21.50 metres above the Hong Kong Principal Datum.  
毗連C1號洋房的一段緊急車輛通道為香港主水平基準以上21.50米。
- The part of the road in Brown Area (as defined in the Land Grant) adjacent to House C1 is 19.74 to 19.84 metres above the Hong Kong Principal Datum. For details and location of the Brown Area, please refer to the Land Grant.  
毗連C1號洋房的一段棕色區域(定義見批地文件)上的道路為香港主水平基準以上 19.74至19.84米。有關棕色區域的詳情及位置,請參考批地文件。
- Dotted line denotes the lowest residential floor.  
虛線為最低住宅樓層水平。

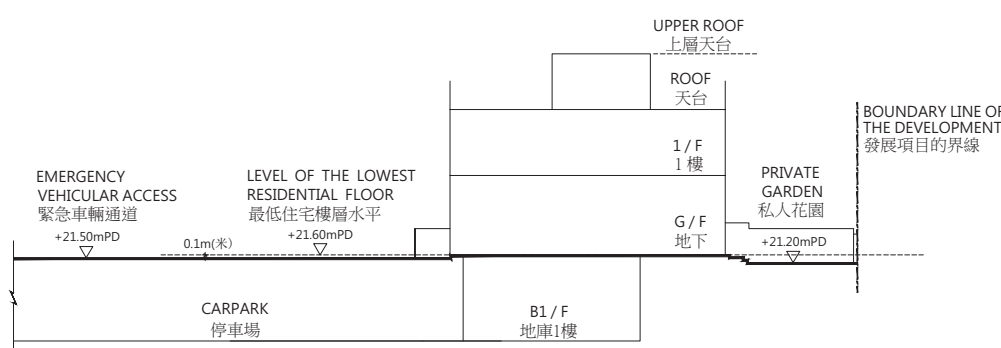
Key Plan  
索引圖

Legend 圖例:

- ▽ Height in metres above Hong Kong Principal Datum (HKPD).  
香港主水平基準以上高度(米)。

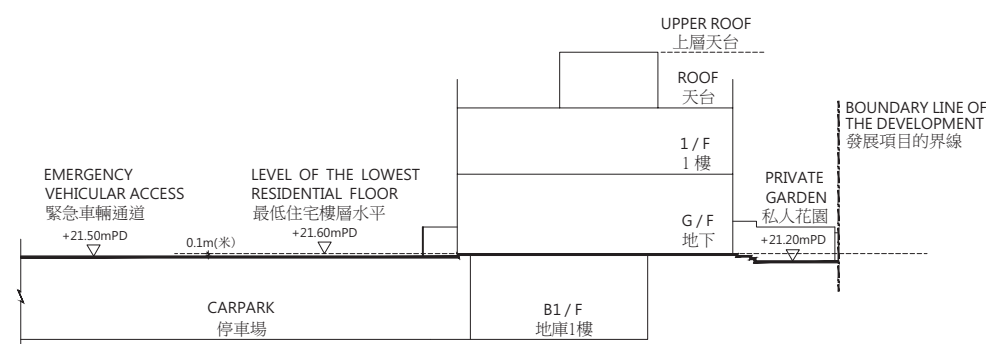
Cross-Section Plan H11  
橫截面圖H11House C2  
C2號洋房

- The part of the Emergency Vehicular Access adjacent to House C2 is 21.50 metres above the Hong Kong Principal Datum.  
毗連C2號洋房的一段緊急車輛通道為香港主水平基準以上21.50米。
- Dotted line denotes the lowest residential floor.  
虛線為最低住宅樓層水平。

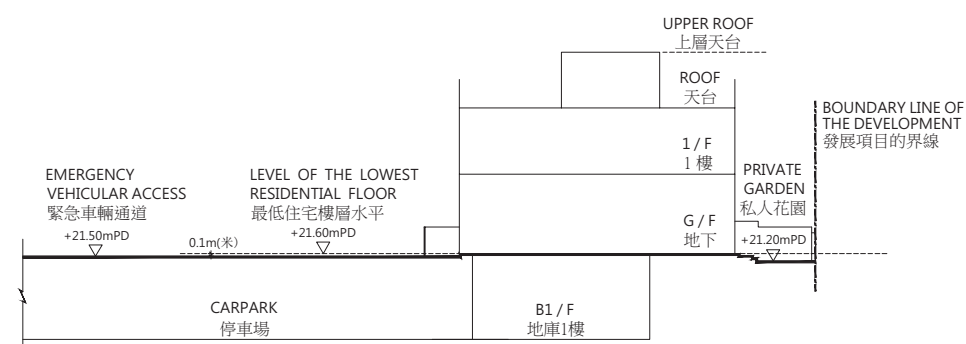
Cross-Section Plan H12  
橫截面圖H12House C3  
C3號洋房

- The part of the Emergency Vehicular Access adjacent to House C3 is 21.50 metres above the Hong Kong Principal Datum.  
毗連C3號洋房的一段緊急車輛通道為香港主水平基準以上21.50米。
- Dotted line denotes the lowest residential floor.  
虛線為最低住宅樓層水平。

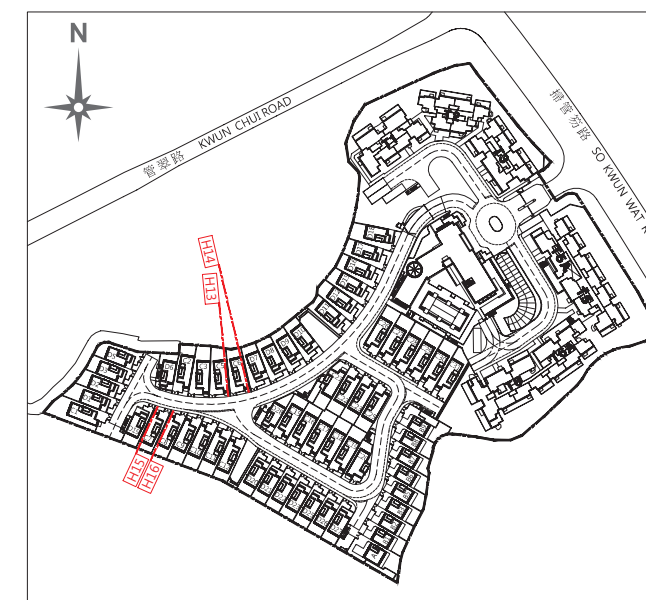
\* The levels are based on the survey as carried out by the chartered land surveyor, Patrick Yuen Land Surveyor Co.Ltd. on 31 May 2016.  
水平基準根據特許土地測量師, 阮步臻土地測量師行有限公司於2016年5月31日進行的測量。

Cross-Section Plan H13  
橫截面圖H13House C5  
C5號洋房

- The part of the Emergency Vehicular Access adjacent to House C5 is 21.50 metres above the Hong Kong Principal Datum.  
毗連C5號洋房的一段緊急車輛通道為香港主水平基準以上21.50米。
- Dotted line denotes the lowest residential floor.  
虛線為最低住宅樓層水平。

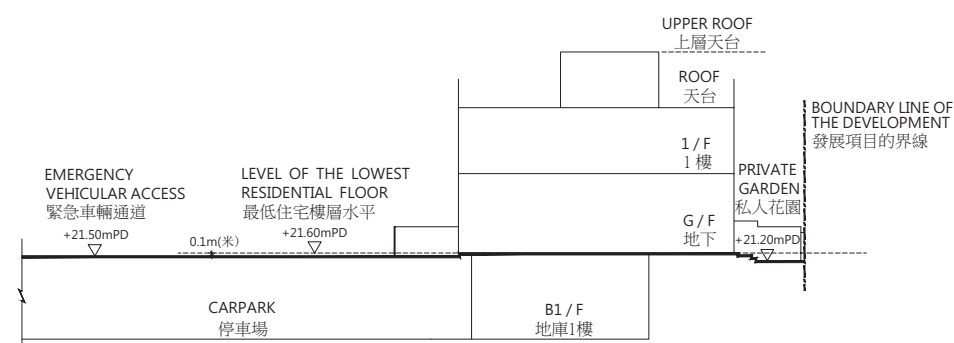
Cross-Section Plan H14  
橫截面圖H14House C6  
C6號洋房

- The part of the Emergency Vehicular Access adjacent to House C6 is 21.50 metres above the Hong Kong Principal Datum.  
毗連C6號洋房的一段緊急車輛通道為香港主水平基準以上21.50米。
- Dotted line denotes the lowest residential floor.  
虛線為最低住宅樓層水平。

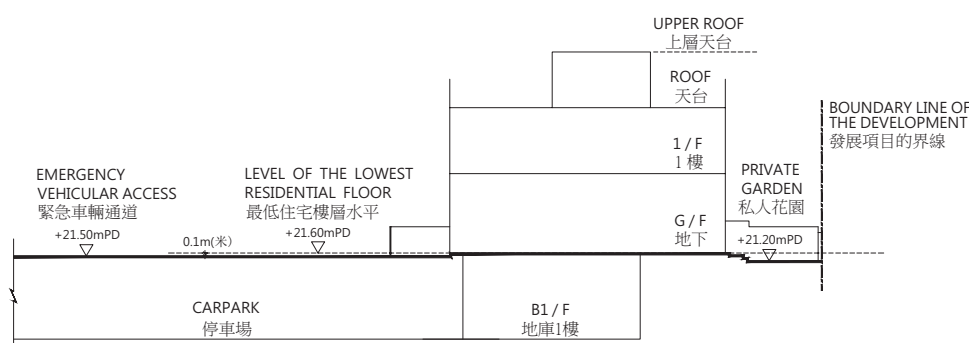
Key Plan  
索引圖

Legend 圖例：

- ▽— Height in metres above Hong Kong Principal Datum (HKPD).  
香港主水平基準以上高度(米)。

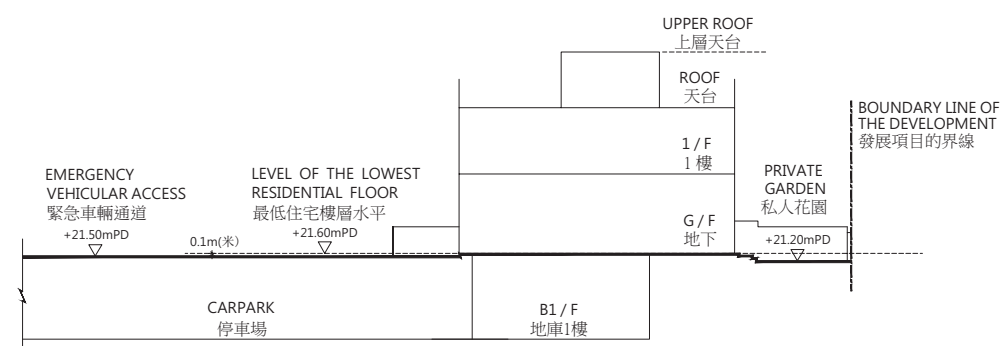
Cross-Section Plan H15  
橫截面圖H15House C7  
C7號洋房

- The part of the Emergency Vehicular Access adjacent to House C7 is 21.50 metres above the Hong Kong Principal Datum.  
毗連C7號洋房的一段緊急車輛通道為香港主水平基準以上21.50米。
- Dotted line denotes the lowest residential floor.  
虛線為最低住宅樓層水平。

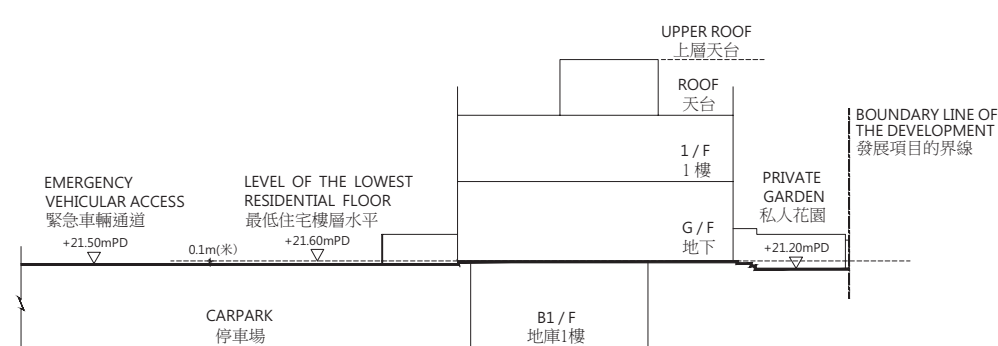
Cross-Section Plan H16  
橫截面圖H16House C8  
C8號洋房

- The part of the Emergency Vehicular Access adjacent to House C8 is 21.50 metres above the Hong Kong Principal Datum.  
毗連C8號洋房的一段緊急車輛通道為香港主水平基準以上21.50米。
- Dotted line denotes the lowest residential floor.  
虛線為最低住宅樓層水平。

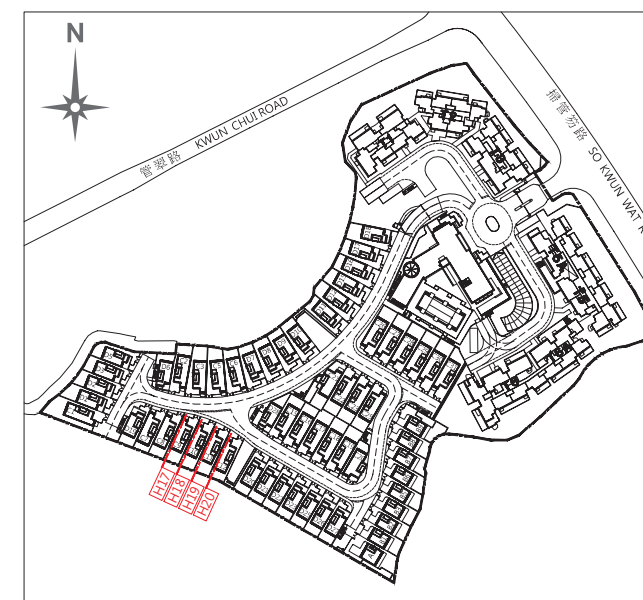
\* The levels are based on the survey as carried out by the chartered land surveyor, Patrick Yuen Land Surveyor Co.Ltd. on 31 May 2016.  
水平基準根據特許土地測量師，阮步臻土地測量師行有限公司於2016年5月31日進行的測量。

Cross-Section Plan H17  
橫截面圖H17House C9  
C9號洋房

- The part of the Emergency Vehicular Access adjacent to House C9 is 21.50 metres above the Hong Kong Principal Datum.  
毗連C9號洋房的一段緊急車輛通道為香港主水平基準以上21.50米。
- Dotted line denotes the lowest residential floor.  
虛線為最低住宅樓層水平。

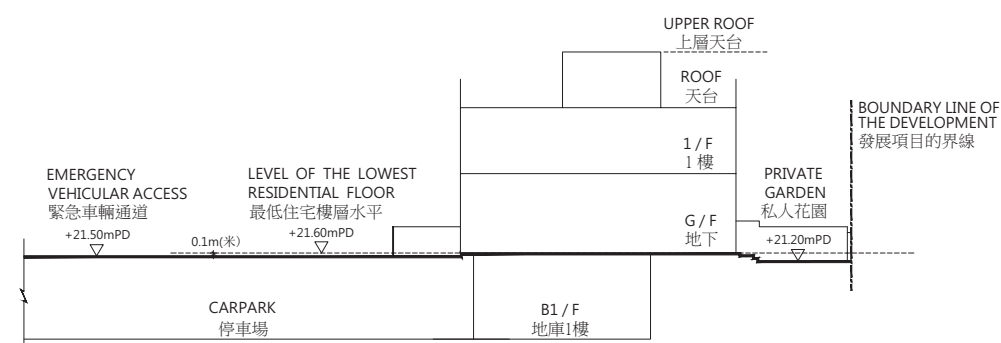
Cross-Section Plan H18  
橫截面圖H18House C10  
C10號洋房

- The part of the Emergency Vehicular Access adjacent to House C10 is 21.50 metres above the Hong Kong Principal Datum.  
毗連C10號洋房的一段緊急車輛通道為香港主水平基準以上21.50米。
- Dotted line denotes the lowest residential floor.  
虛線為最低住宅樓層水平。

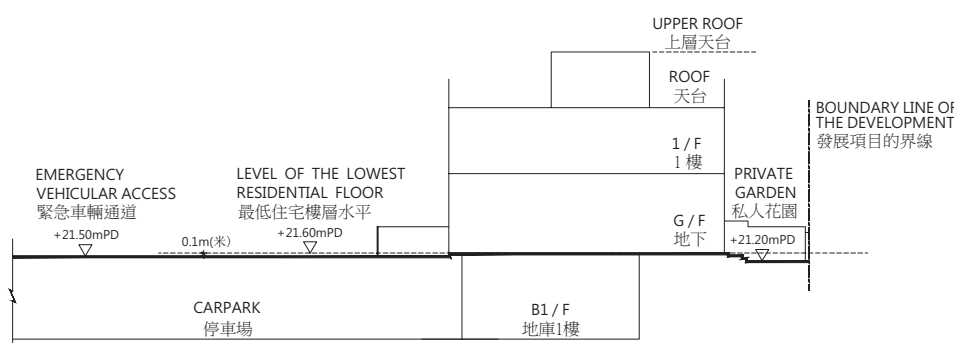
Key Plan  
索引圖

Legend 圖例：

- ▽ Height in metres above Hong Kong Principal Datum (HKPD).  
香港主水平基準以上高度(米)。

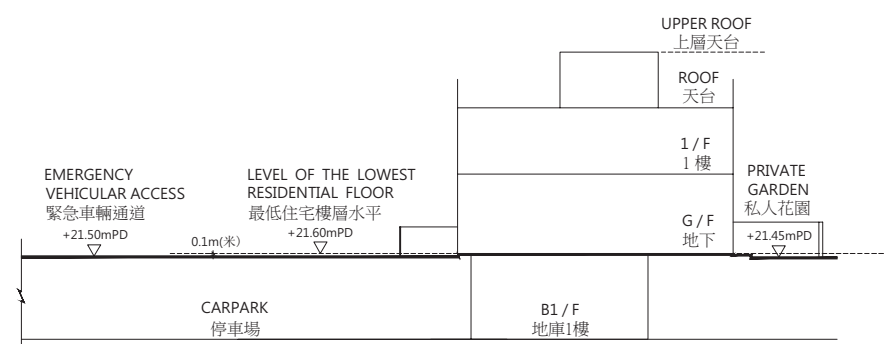
Cross-Section Plan H19  
橫截面圖H19House C11  
C11號洋房

- The part of the Emergency Vehicular Access adjacent to House C11 is 21.50 metres above the Hong Kong Principal Datum.  
毗連C11號洋房的一段緊急車輛通道為香港主水平基準以上21.50米。
- Dotted line denotes the lowest residential floor.  
虛線為最低住宅樓層水平。

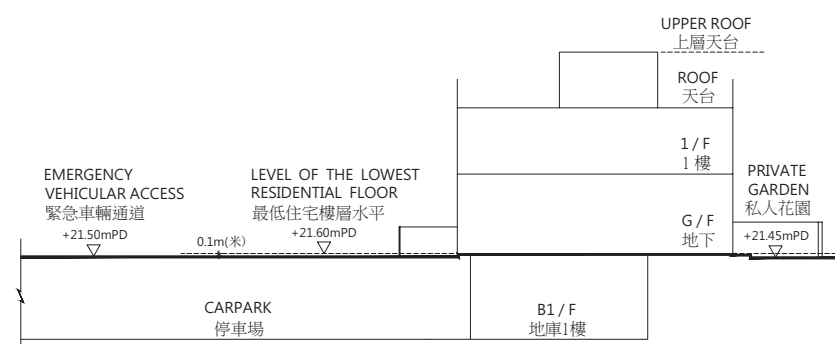
Cross-Section Plan H20  
橫截面圖H20House C12  
C12號洋房

- The part of the Emergency Vehicular Access adjacent to House C12 is 21.50 metres above the Hong Kong Principal Datum.  
毗連C12號洋房的一段緊急車輛通道為香港主水平基準以上21.50米。
- Dotted line denotes the lowest residential floor.  
虛線為最低住宅樓層水平。

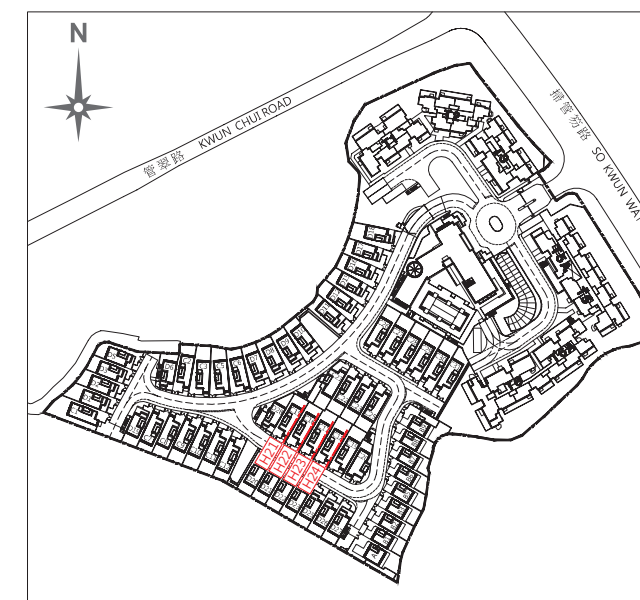
\* The levels are based on the survey as carried out by the chartered land surveyor, Patrick Yuen Land Surveyor Co.Ltd. on 31 May 2016.  
水平基準根據特許土地測量師，阮步臻土地測量師行有限公司於2016年5月31日進行的測量。

Cross-Section Plan H21  
橫截面圖H21House C15  
C15號洋房

- The part of the Emergency Vehicular Access adjacent to House C15 is 21.50 metres above the Hong Kong Principal Datum.  
毗連C15號洋房的一段緊急車輛通道為香港主水平基準以上21.50米。
- Dotted line denotes the lowest residential floor.  
虛線為最低住宅樓層水平。

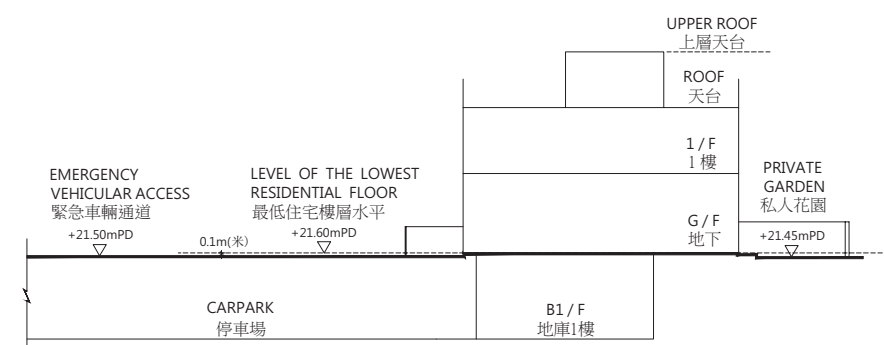
Cross-Section Plan H22  
橫截面圖H22House C16  
C16號洋房

- The part of the Emergency Vehicular Access adjacent to House C16 is 21.50 metres above the Hong Kong Principal Datum.  
毗連C16號洋房的一段緊急車輛通道為香港主水平基準以上21.50米。
- Dotted line denotes the lowest residential floor.  
虛線為最低住宅樓層水平。

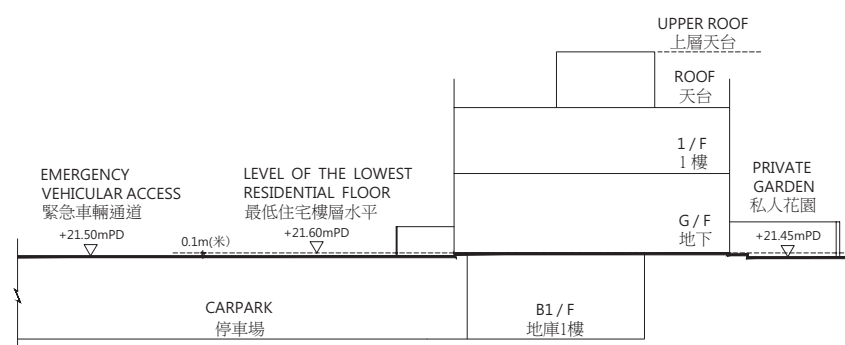
Key Plan  
索引圖

Legend 圖例：

- ▽— Height in metres above Hong Kong Principal Datum (HKPD).  
香港主水平基準以上高度(米)。

Cross-Section Plan H23  
橫截面圖H23House C17  
C17號洋房

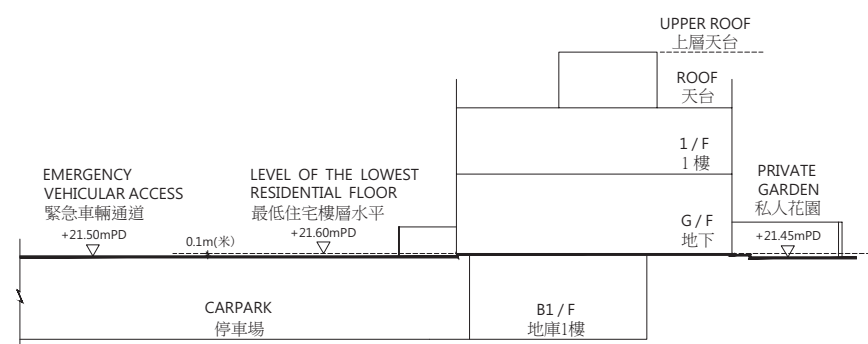
- The part of the Emergency Vehicular Access adjacent to House C17 is 21.50 metres above the Hong Kong Principal Datum.  
毗連C17號洋房的一段緊急車輛通道為香港主水平基準以上21.50米。
- Dotted line denotes the lowest residential floor.  
虛線為最低住宅樓層水平。

Cross-Section Plan H24  
橫截面圖H24House C18  
C18號洋房

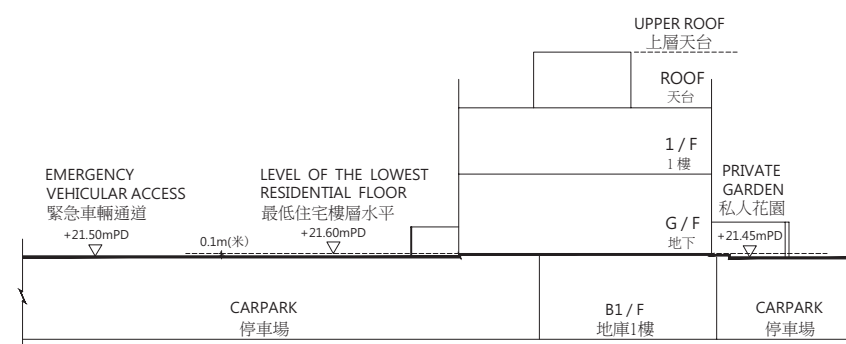
- The part of the Emergency Vehicular Access adjacent to House C18 is 21.50 metres above the Hong Kong Principal Datum.  
毗連C18號洋房的一段緊急車輛通道為香港主水平基準以上21.50米。
- Dotted line denotes the lowest residential floor.  
虛線為最低住宅樓層水平。

\* The levels are based on the survey as carried out by the chartered land surveyor, Patrick Yuen Land Surveyor Co.Ltd. on 31 May 2016.  
水平基準根據特許土地測量師，阮步臻土地測量師行有限公司於2016年5月31日進行的測量。

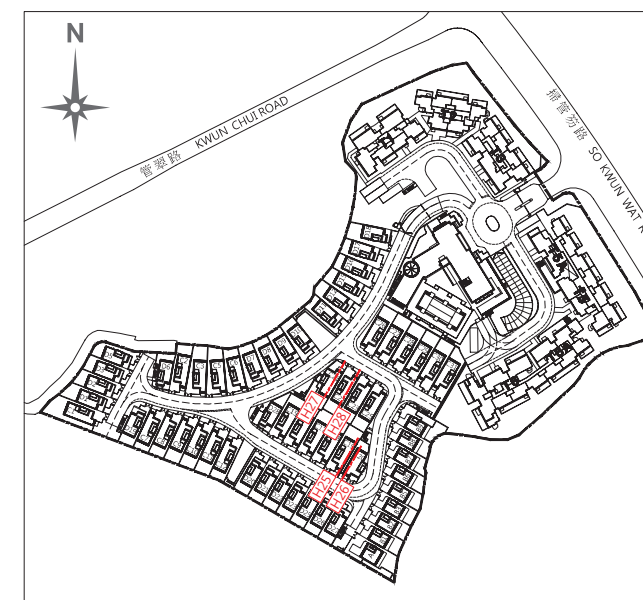


Cross-Section Plan H25  
橫截面圖H25House C19  
C19號洋房

- The part of the Emergency Vehicular Access adjacent to House C19 is 21.50 metres above the Hong Kong Principal Datum.  
毗連C19號洋房的一段緊急車輛通道為香港主水平基準以上21.50米。
- Dotted line denotes the lowest residential floor.  
虛線為最低住宅樓層水平。

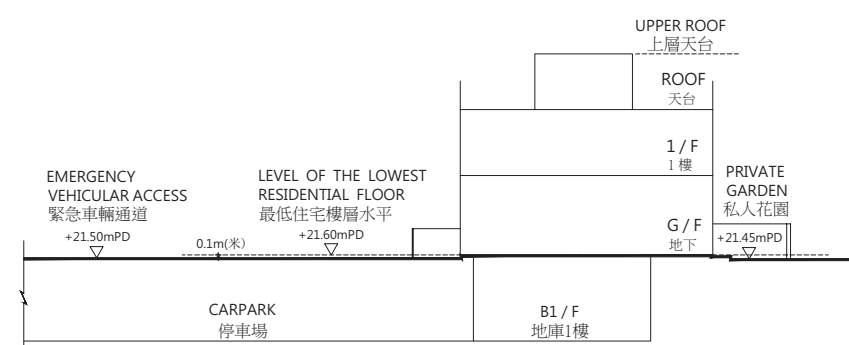
Cross-Section Plan H26  
橫截面圖H26House C20  
C20號洋房

- The part of the Emergency Vehicular Access adjacent to House C20 is 21.50 metres above the Hong Kong Principal Datum.  
毗連C20號洋房的一段緊急車輛通道為香港主水平基準以上21.50米。
- Dotted line denotes the lowest residential floor.  
虛線為最低住宅樓層水平。

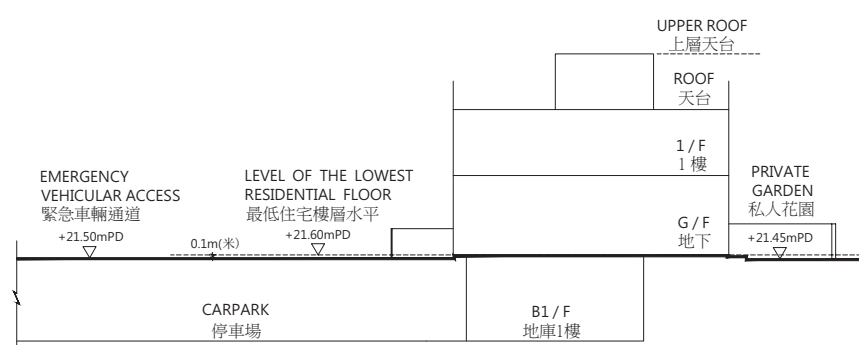
Key Plan  
索引圖

Legend 圖例：

- ▽— Height in metres above Hong Kong Principal Datum (HKPD).  
香港主水平基準以上高度(米)。

Cross-Section Plan H27  
橫截面圖H27House C21  
C21號洋房

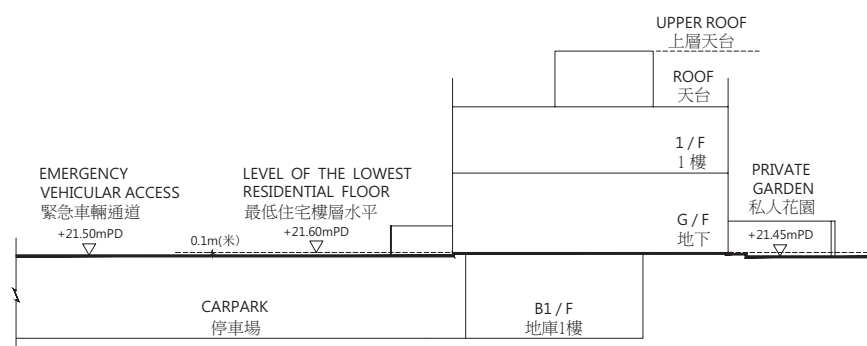
- The part of the Emergency Vehicular Access adjacent to House C21 is 21.50 metres above the Hong Kong Principal Datum.  
毗連C21號洋房的一段緊急車輛通道為香港主水平基準以上21.50米。
- Dotted line denotes the lowest residential floor.  
虛線為最低住宅樓層水平。

Cross-Section Plan H28  
橫截面圖H28House C22  
C22號洋房

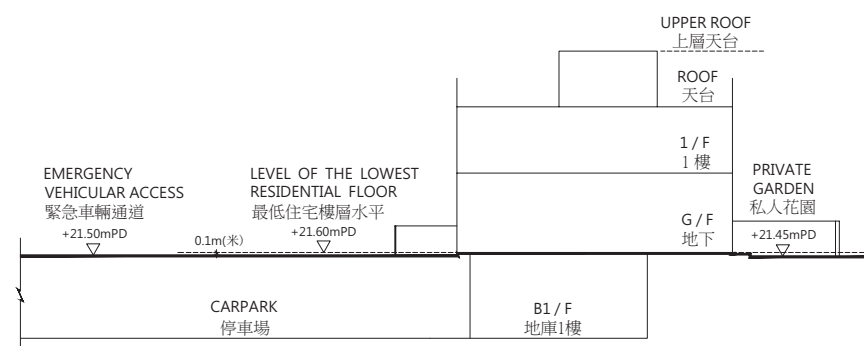
- The part of the Emergency Vehicular Access adjacent to House C22 is 21.50 metres above the Hong Kong Principal Datum.  
毗連C22號洋房的一段緊急車輛通道為香港主水平基準以上21.50米。
- Dotted line denotes the lowest residential floor.  
虛線為最低住宅樓層水平。

\* The levels are based on the survey as carried out by the chartered land surveyor, Patrick Yuen Land Surveyor Co.Ltd. on 31 May 2016.  
水平基準根據特許土地測量師，阮步臻土地測量師行有限公司於2016年5月31日進行的測量。

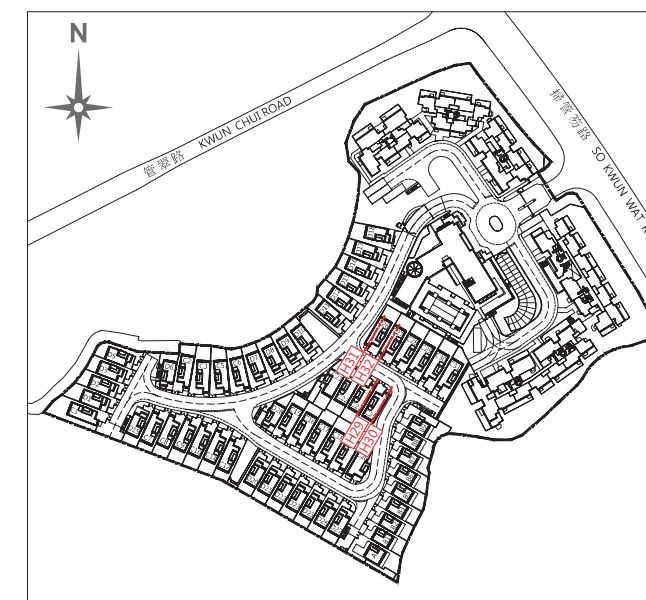


Cross-Section Plan H29  
橫截面圖H29House C23  
C23號洋房

- The part of the Emergency Vehicular Access adjacent to House C23 is 21.50 metres above the Hong Kong Principal Datum.  
毗連C23號洋房的一段緊急車輛通道為香港主水平基準以上21.50米。
- Dotted line denotes the lowest residential floor.  
虛線為最低住宅樓層水平。

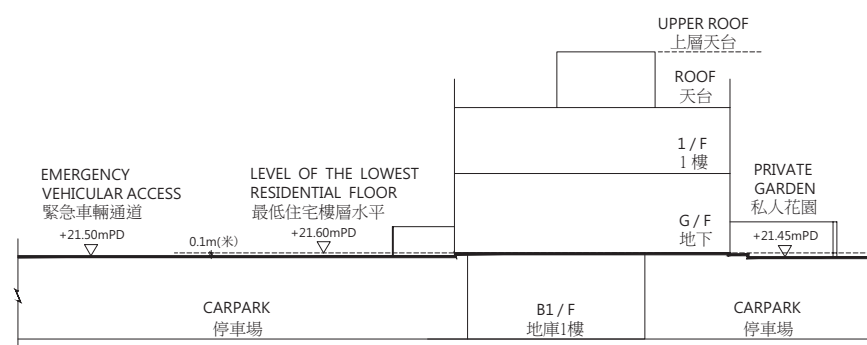
Cross-Section Plan H30  
橫截面圖H30House C25  
C25號洋房

- The part of the Emergency Vehicular Access adjacent to House C25 is 21.50 metres above the Hong Kong Principal Datum.  
毗連C25號洋房的一段緊急車輛通道為香港主水平基準以上21.50米。
- Dotted line denotes the lowest residential floor.  
虛線為最低住宅樓層水平。

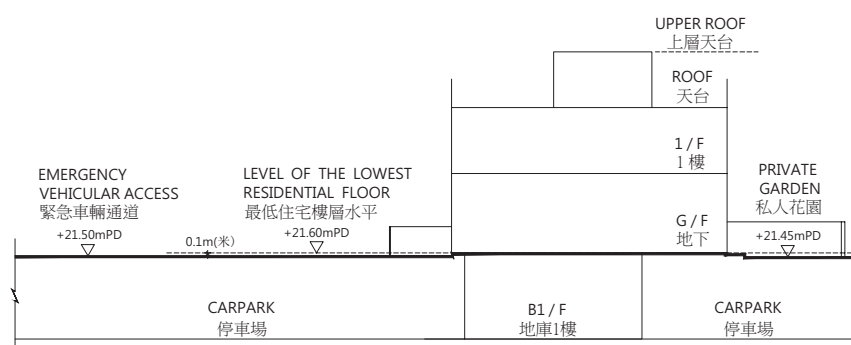
Key Plan  
索引圖

Legend 圖例：

- ▽— Height in metres above Hong Kong Principal Datum (HKPD).  
香港主水平基準以上高度(米)。

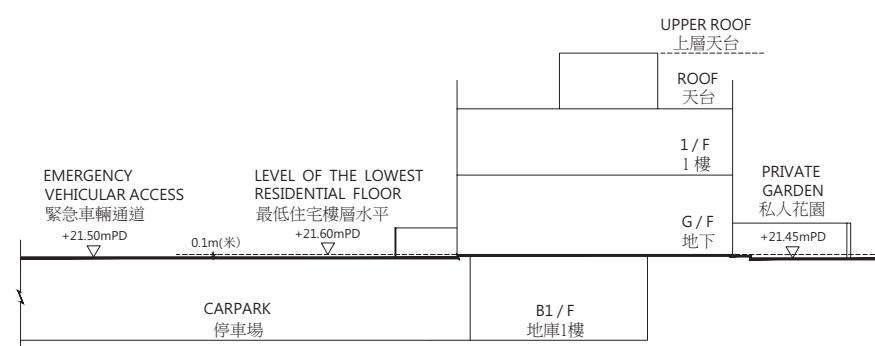
Cross-Section Plan H31  
橫截面圖H31House C26  
C26號洋房

- The part of the Emergency Vehicular Access adjacent to House C26 is 21.50 metres above the Hong Kong Principal Datum.  
毗連C26號洋房的一段緊急車輛通道為香港主水平基準以上21.50米。
- Dotted line denotes the lowest residential floor.  
虛線為最低住宅樓層水平。

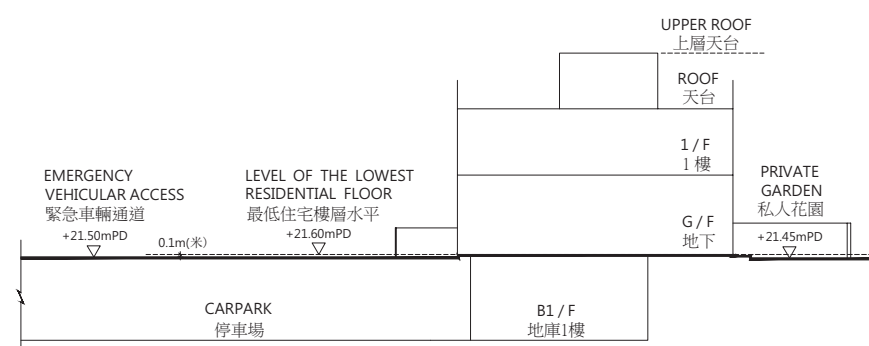
Cross-Section Plan H32  
橫截面圖H32House C27  
C27號洋房

- The part of the Emergency Vehicular Access adjacent to House C27 is 21.50 metres above the Hong Kong Principal Datum.  
毗連C27號洋房的一段緊急車輛通道為香港主水平基準以上21.50米。
- Dotted line denotes the lowest residential floor.  
虛線為最低住宅樓層水平。

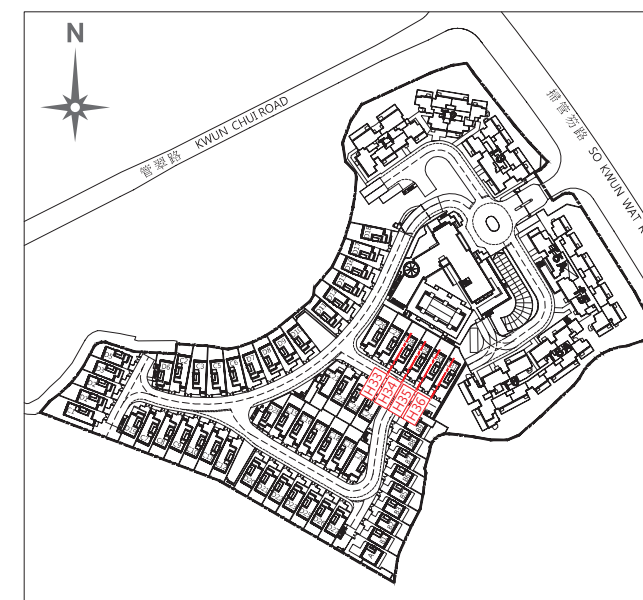
\* The levels are based on the survey as carried out by the chartered land surveyor, Patrick Yuen Land Surveyor Co.Ltd. on 31 May 2016.  
水平基準根據特許土地測量師，阮步臻土地測量師行有限公司於2016年5月31日進行的測量。

Cross-Section Plan H33  
橫截面圖H33House C28  
C28號洋房

- The part of the Emergency Vehicular Access adjacent to House C28 is 21.50 metres above the Hong Kong Principal Datum.  
毗連C28號洋房的一段緊急車輛通道為香港主水平基準以上21.50米。
- Dotted line denotes the lowest residential floor.  
虛線為最低住宅樓層水平。

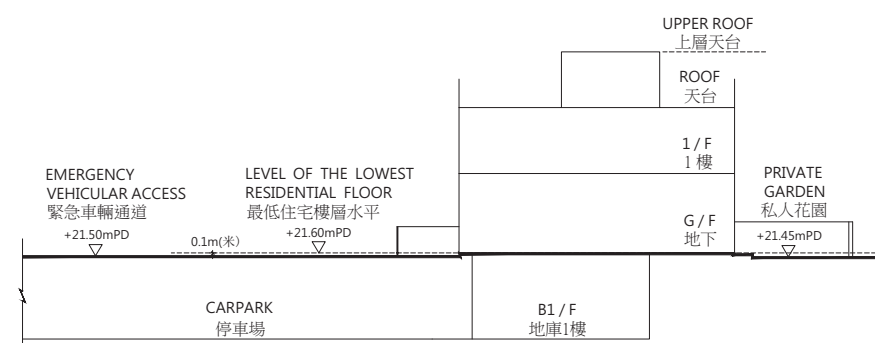
Cross-Section Plan H34  
橫截面圖H34House C29  
C29號洋房

- The part of the Emergency Vehicular Access adjacent to House C29 is 21.50 metres above the Hong Kong Principal Datum.  
毗連C29號洋房的一段緊急車輛通道為香港主水平基準以上21.50米。
- Dotted line denotes the lowest residential floor.  
虛線為最低住宅樓層水平。

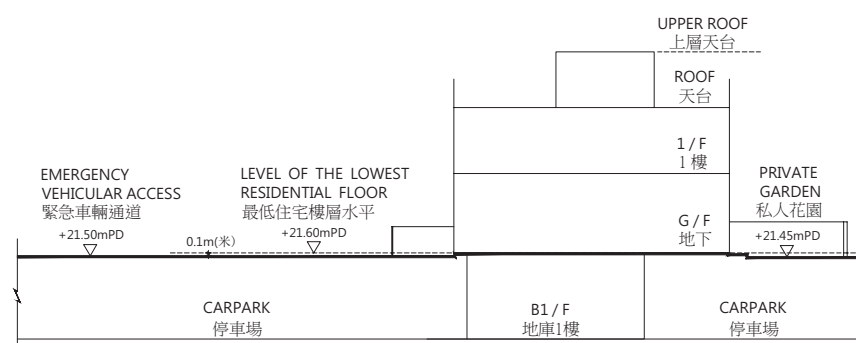
Key Plan  
索引圖

Legend 圖例：

- ▽ Height in metres above Hong Kong Principal Datum (HKPD).  
香港主水平基準以上高度(米)。

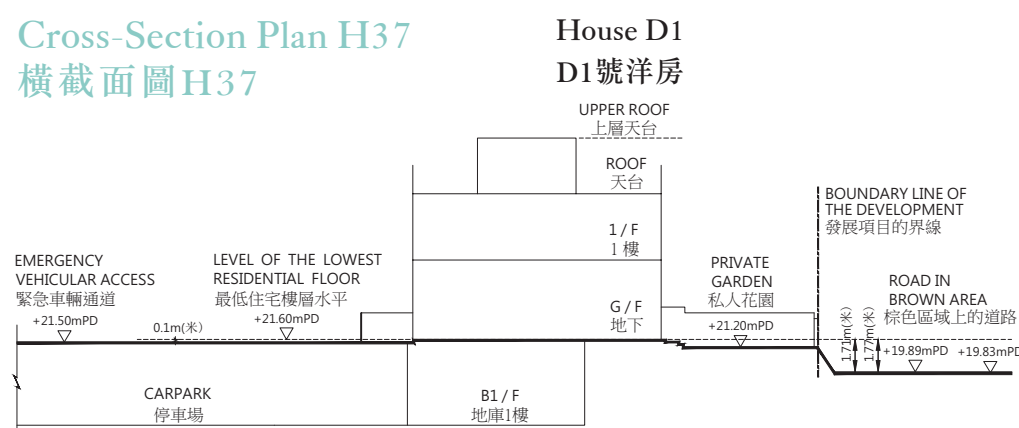
Cross-Section Plan H35  
橫截面圖H35House C30  
C30號洋房

- The part of the Emergency Vehicular Access adjacent to House C30 is 21.50 metres above the Hong Kong Principal Datum.  
毗連C30號洋房的一段緊急車輛通道為香港主水平基準以上21.50米。
- Dotted line denotes the lowest residential floor.  
虛線為最低住宅樓層水平。

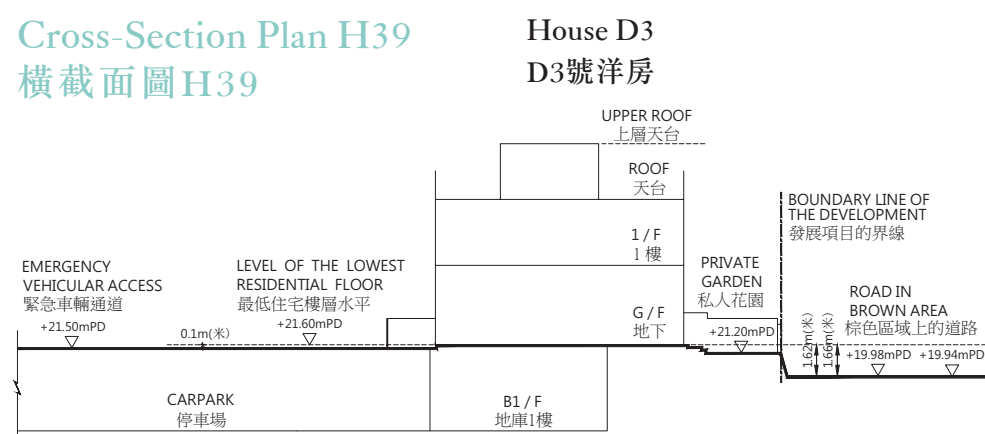
Cross-Section Plan H36  
橫截面圖H36House C31  
C31號洋房

- The part of the Emergency Vehicular Access adjacent to House C31 is 21.50 metres above the Hong Kong Principal Datum.  
毗連C31號洋房的一段緊急車輛通道為香港主水平基準以上21.50米。
- Dotted line denotes the lowest residential floor.  
虛線為最低住宅樓層水平。

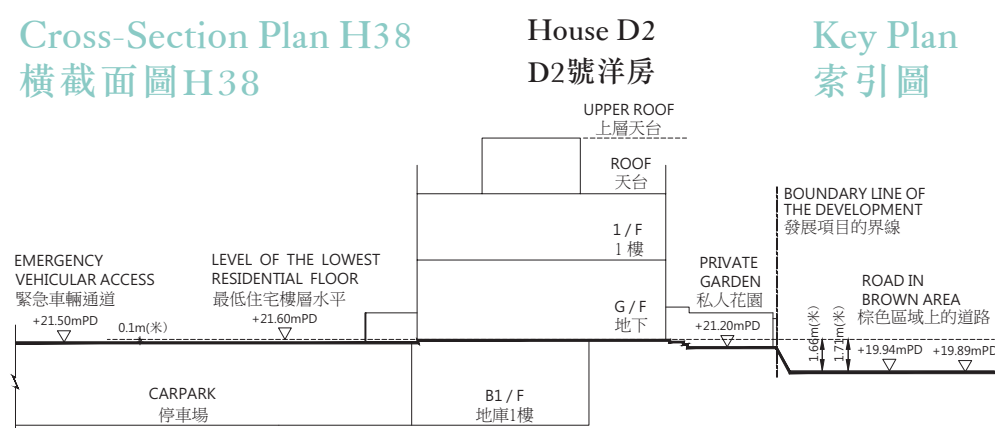
\* The levels are based on the survey as carried out by the chartered land surveyor, Patrick Yuen Land Surveyor Co.Ltd. on 31 May 2016.  
水平基準根據特許土地測量師，阮步臻土地測量師行有限公司於2016年5月31日進行的測量。

Cross-Section Plan H37  
橫截面圖H37

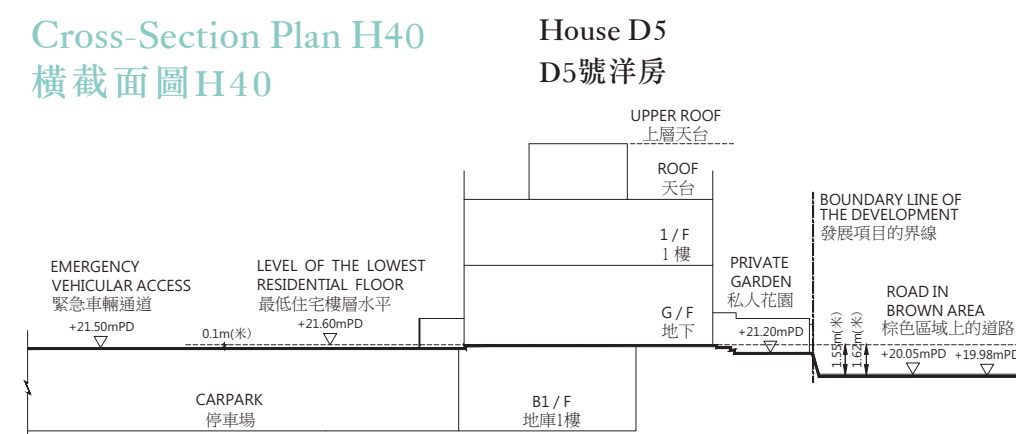
- The part of the Emergency Vehicular Access adjacent to House D1 is 21.50 metres above the Hong Kong Principal Datum.  
毗連D1號洋房的一段緊急車輛通道為香港主水平基準以上21.50米。
- The part of the road in Brown Area (as defined in the Land Grant) adjacent to House D1 is 19.83 to 19.89 metres above the Hong Kong Principal Datum. For details and location of the Brown Area, please refer to the Land Grant.  
毗連D1號洋房的一段棕色區域 (定義見批地文件) 上的道路為香港主水平基準以上 19.83至19.89米。有關棕色區域的詳情及位置，請參考批地文件。
- Dotted line denotes the lowest residential floor.  
虛線為最低住宅樓層水平。

Cross-Section Plan H39  
橫截面圖H39

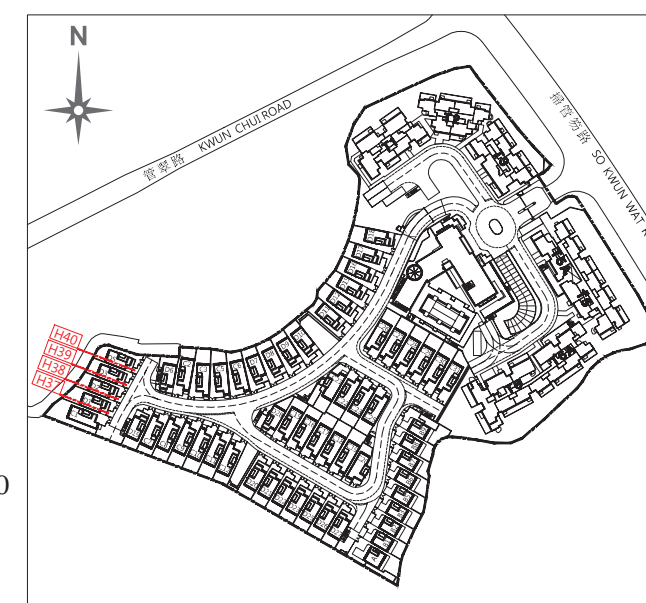
- The part of the Emergency Vehicular Access adjacent to House D3 is 21.50 metres above the Hong Kong Principal Datum.  
毗連D3號洋房的一段緊急車輛通道為香港主水平基準以上21.50米。
- The part of the road in Brown Area (as defined in the Land Grant) adjacent to House D3 is 19.94 to 19.98 metres above the Hong Kong Principal Datum. For details and location of the Brown Area, please refer to the Land Grant.  
毗連D3號洋房的一段棕色區域 (定義見批地文件) 上的道路為香港主水平基準以上 19.94至19.98米。有關棕色區域的詳情及位置，請參考批地文件。
- Dotted line denotes the lowest residential floor.  
虛線為最低住宅樓層水平。

Cross-Section Plan H38  
橫截面圖H38

- The part of the Emergency Vehicular Access adjacent to House D2 is 21.50 metres above the Hong Kong Principal Datum.  
毗連D2號洋房的一段緊急車輛通道為香港主水平基準以上21.50米。
- The part of the road in Brown Area (as defined in the Land Grant) adjacent to House D2 is 19.89 to 19.94 metres above the Hong Kong Principal Datum. For details and location of the Brown Area, please refer to the Land Grant.  
毗連D2號洋房的一段棕色區域 (定義見批地文件) 上的道路為香港主水平基準以上 19.89至19.94米。有關棕色區域的詳情及位置，請參考批地文件。
- Dotted line denotes the lowest residential floor.  
虛線為最低住宅樓層水平。

Cross-Section Plan H40  
橫截面圖H40

- The part of the Emergency Vehicular Access adjacent to House D5 is 21.50 metres above the Hong Kong Principal Datum.  
毗連D5號洋房的一段緊急車輛通道為香港主水平基準以上21.50米。
- The part of the road in Brown Area (as defined in the Land Grant) adjacent to House D5 is 19.98 to 20.05 metres above the Hong Kong Principal Datum. For details and location of the Brown Area, please refer to the Land Grant.  
毗連D5號洋房的一段棕色區域 (定義見批地文件) 上的道路為香港主水平基準以上 19.98至20.05米。有關棕色區域的詳情及位置，請參考批地文件。
- Dotted line denotes the lowest residential floor.  
虛線為最低住宅樓層水平。

Key Plan  
索引圖

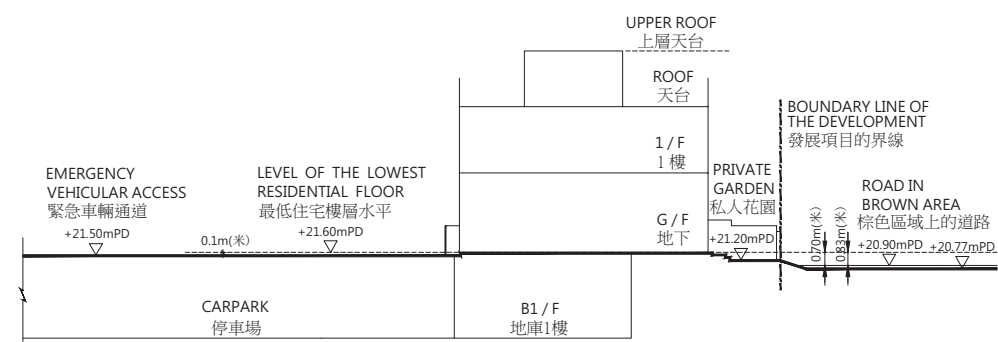
Legend 圖例：

- ▽ Height in metres above Hong Kong Principal Datum (HKPD).  
香港主水平基準以上高度(米)。

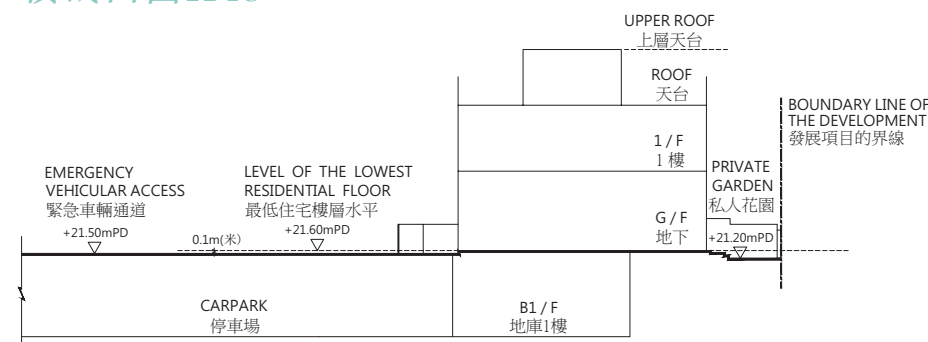
\* The levels are based on the survey as carried out by the chartered land surveyor, Patrick Yuen Land Surveyor Co.Ltd. on 31 May 2016.

水平基準根據特許土地測量師，阮步臻土地測量師行有限公司於2016年5月31日進行的測量。

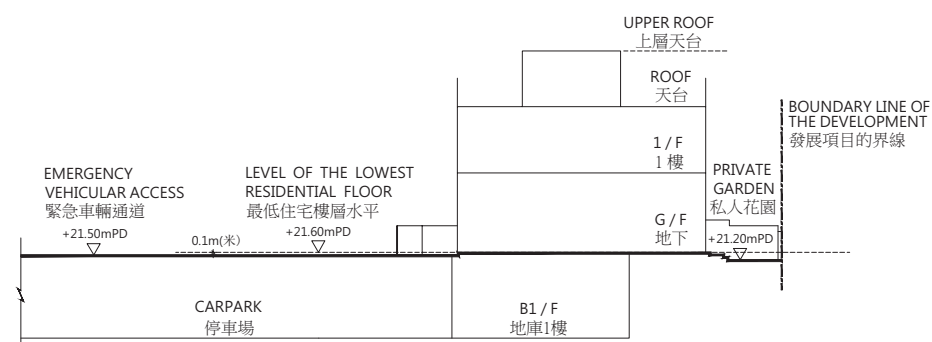


Cross-Section Plan H41  
橫截面圖H41House D6  
D6號洋房

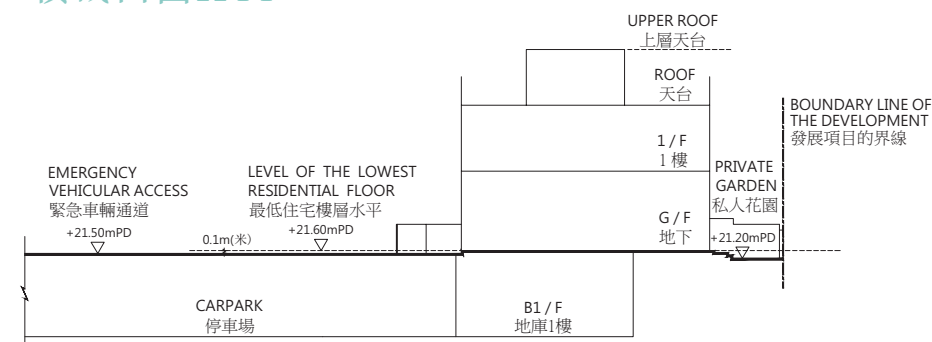
- The part of the Emergency Vehicular Access adjacent to House D6 is 21.50 metres above the Hong Kong Principal Datum.  
毗連D6號洋房的一段緊急車輛通道為香港主水平基準以上21.50米。
- The part of the road in Brown Area (as defined in the Land Grant) adjacent to House D6 is 20.77 to 20.90 metres above the Hong Kong Principal Datum. For details and location of the Brown Area, please refer to the Land Grant.  
毗連D6號洋房的一段棕色區域 (定義見批地文件) 上的道路為香港主水平基準以上 20.77至20.90米。有關棕色區域的詳情及位置, 請參考批地文件。
- Dotted line denotes the lowest residential floor.  
虛線為最低住宅樓層水平。

Cross-Section Plan H43  
橫截面圖H43House D8  
D8號洋房

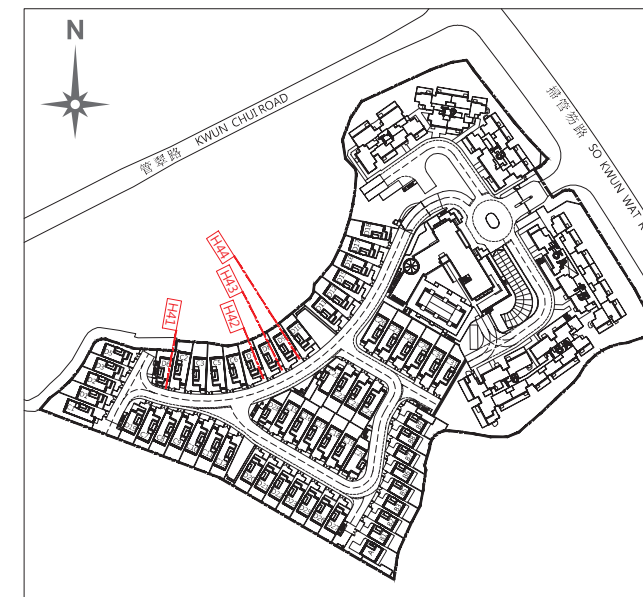
- The part of the Emergency Vehicular Access adjacent to House D8 is 21.50 metres above the Hong Kong Principal Datum.  
毗連D8號洋房的一段緊急車輛通道為香港主水平基準以上21.50米。
- Dotted line denotes the lowest residential floor.  
虛線為最低住宅樓層水平。

Cross-Section Plan H42  
橫截面圖H42House D7  
D7號洋房

- The part of the Emergency Vehicular Access adjacent to House D7 is 21.50 metres above the Hong Kong Principal Datum.  
毗連D7號洋房的一段緊急車輛通道為香港主水平基準以上21.50米。
- Dotted line denotes the lowest residential floor.  
虛線為最低住宅樓層水平。

Cross-Section Plan H44  
橫截面圖H44House D9  
D9號洋房

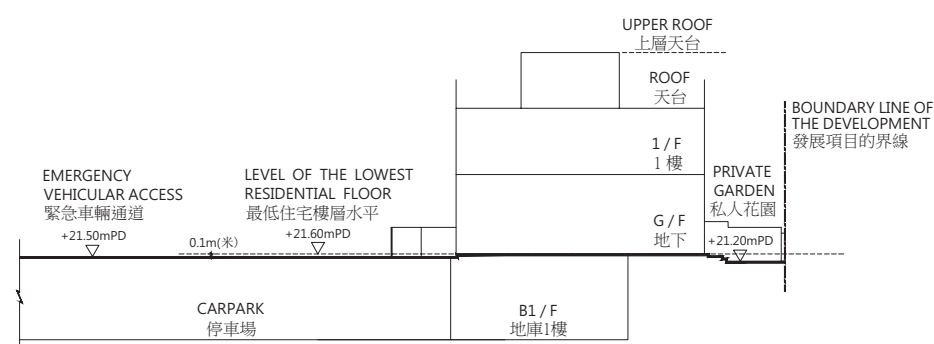
- The part of the Emergency Vehicular Access adjacent to House D9 is 21.50 metres above the Hong Kong Principal Datum.  
毗連D9號洋房的一段緊急車輛通道為香港主水平基準以上21.50米。
- Dotted line denotes the lowest residential floor.  
虛線為最低住宅樓層水平。

Key Plan  
索引圖

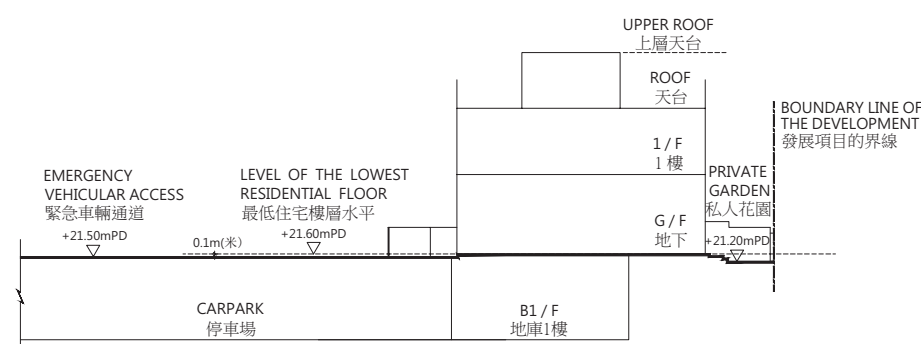
Legend 圖例 :

- ▽ Height in metres above Hong Kong Principal Datum (HKPD).  
香港主水平基準以上高度(米)。

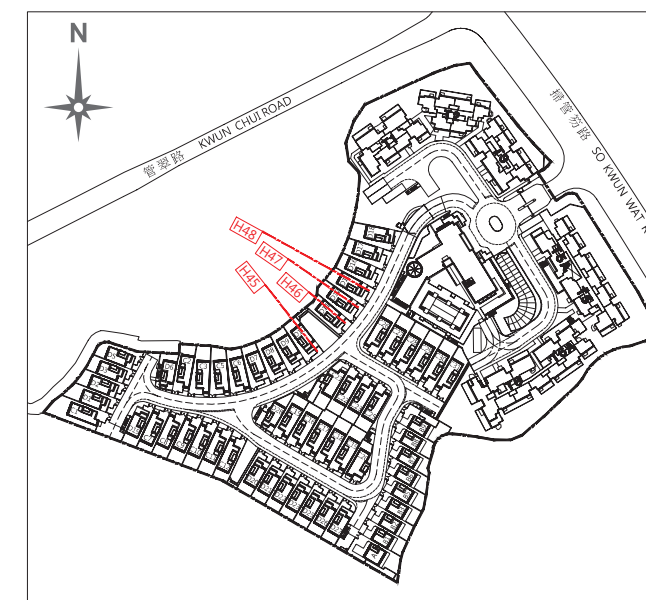
\* The levels are based on the survey as carried out by the chartered land surveyor, Patrick Yuen Land Surveyor Co.Ltd. on 31 May 2016.  
水平基準根據特許土地測量師, 阮步臻土地測量師行有限公司於2016年5月31日進行的測量。

Cross-Section Plan H45  
橫截面圖H45House D10  
D10號洋房

- The part of the Emergency Vehicular Access adjacent to House D10 is 21.50 metres above the Hong Kong Principal Datum.  
毗連D10號洋房的一段緊急車輛通道為香港主水平基準以上21.50米。
- Dotted line denotes the lowest residential floor.  
虛線為最低住宅樓層水平。

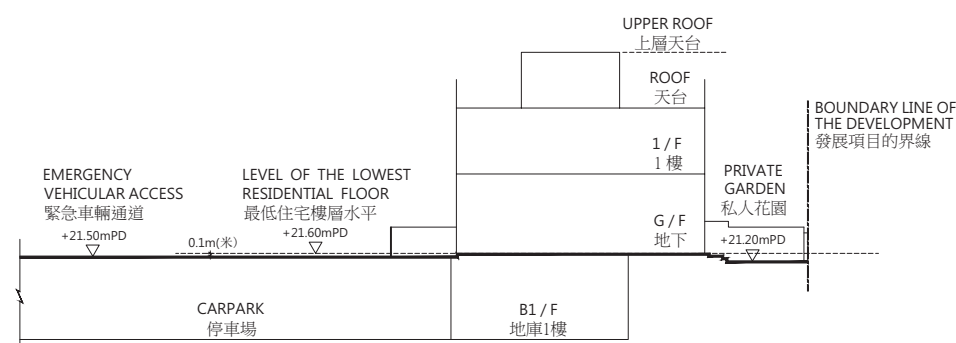
Cross-Section Plan H46  
橫截面圖H46House D11  
D11號洋房

- The part of the Emergency Vehicular Access adjacent to House D11 is 21.50 metres above the Hong Kong Principal Datum.  
毗連D11號洋房的一段緊急車輛通道為香港主水平基準以上21.50米。
- Dotted line denotes the lowest residential floor.  
虛線為最低住宅樓層水平。

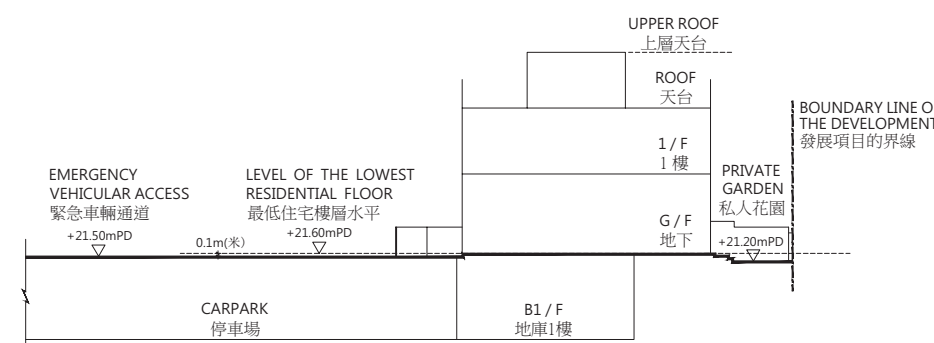
Key Plan  
索引圖

Legend 圖例：

- ▽— Height in metres above Hong Kong Principal Datum (HKPD).  
香港主水平基準以上高度(米)。

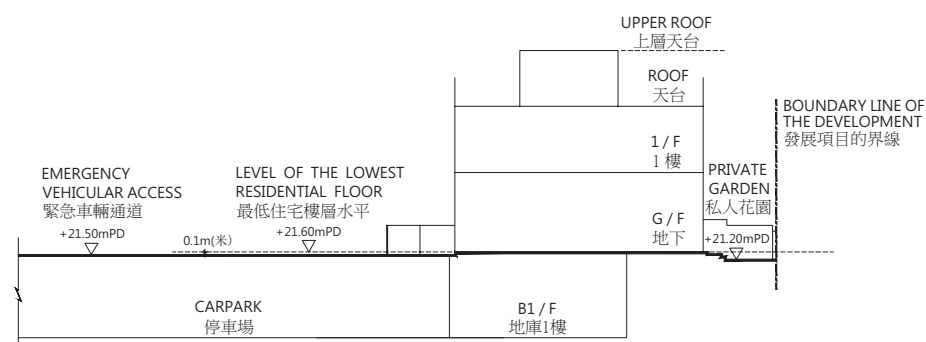
Cross-Section Plan H47  
橫截面圖H47House D12  
D12號洋房

- The part of the Emergency Vehicular Access adjacent to House D12 is 21.50 metres above the Hong Kong Principal Datum.  
毗連D12號洋房的一段緊急車輛通道為香港主水平基準以上21.50米。
- Dotted line denotes the lowest residential floor.  
虛線為最低住宅樓層水平。

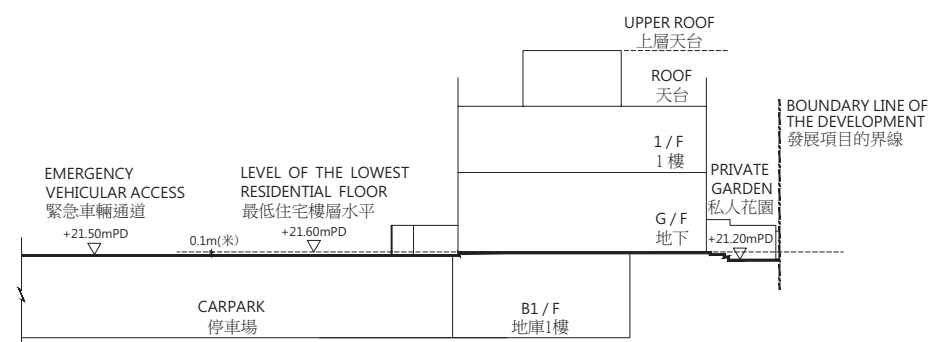
Cross-Section Plan H48  
橫截面圖H48House D15  
D15號洋房

- The part of the Emergency Vehicular Access adjacent to House D15 is 21.50 metres above the Hong Kong Principal Datum.  
毗連D15號洋房的一段緊急車輛通道為香港主水平基準以上21.50米。
- Dotted line denotes the lowest residential floor.  
虛線為最低住宅樓層水平。

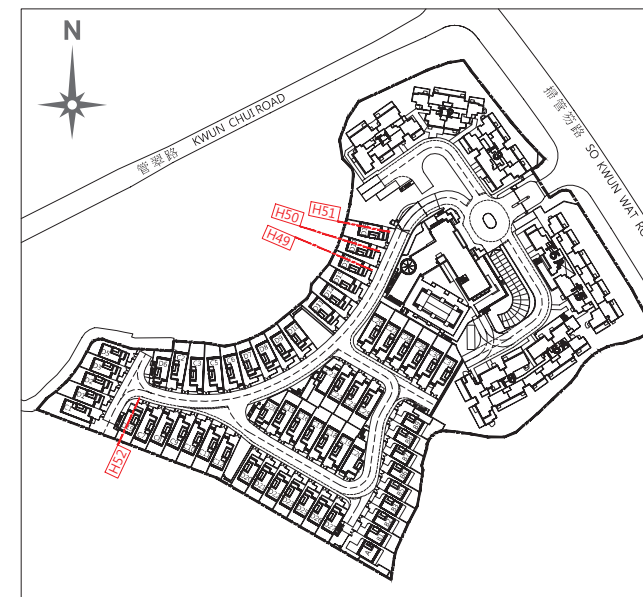
\* The levels are based on the survey as carried out by the chartered land surveyor, Patrick Yuen Land Surveyor Co.Ltd. on 31 May 2016.  
水平基準根據特許土地測量師，阮步臻土地測量師行有限公司於2016年5月31日進行的測量。

Cross-Section Plan H49  
橫截面圖H49House D16  
D16號洋房

- The part of the Emergency Vehicular Access adjacent to House D16 is 21.50 metres above the Hong Kong Principal Datum.  
毗連D16號洋房的一段緊急車輛通道為香港主水平基準以上21.50米。
- Dotted line denotes the lowest residential floor.  
虛線為最低住宅樓層水平。

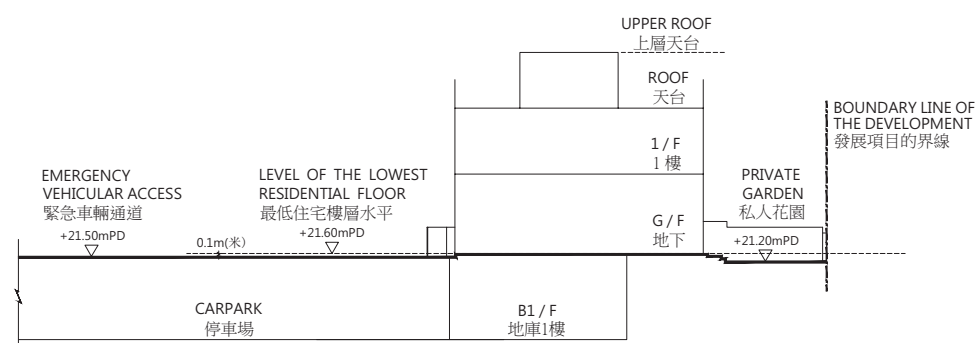
Cross-Section Plan H50  
橫截面圖H50House D17  
D17號洋房

- The part of the Emergency Vehicular Access adjacent to House D17 is 21.50 metres above the Hong Kong Principal Datum.  
毗連D17號洋房的一段緊急車輛通道為香港主水平基準以上21.50米。
- Dotted line denotes the lowest residential floor.  
虛線為最低住宅樓層水平。

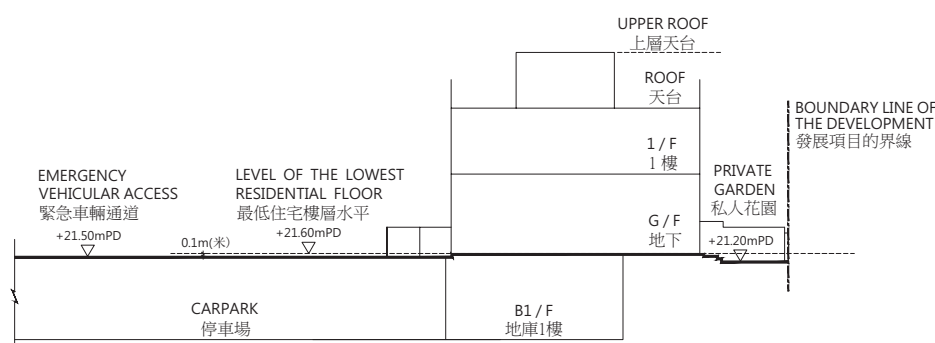
Key Plan  
索引圖

Legend 圖例：

- ▽ Height in metres above Hong Kong Principal Datum (HKPD).  
香港主水平基準以上高度(米)。

Cross-Section Plan H51  
橫截面圖H51House D18  
D18號洋房

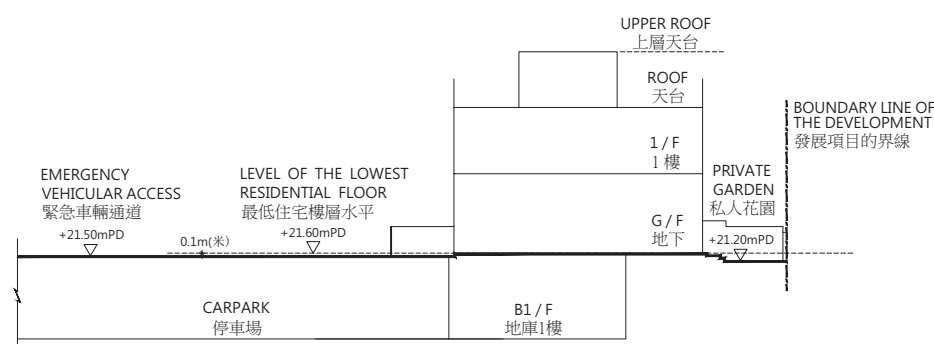
- The part of the Emergency Vehicular Access adjacent to House D18 is 21.50 metres above the Hong Kong Principal Datum.  
毗連D18號洋房的一段緊急車輛通道為香港主水平基準以上21.50米。
- Dotted line denotes the lowest residential floor.  
虛線為最低住宅樓層水平。

Cross-Section Plan H52  
橫截面圖H52House D19  
D19號洋房

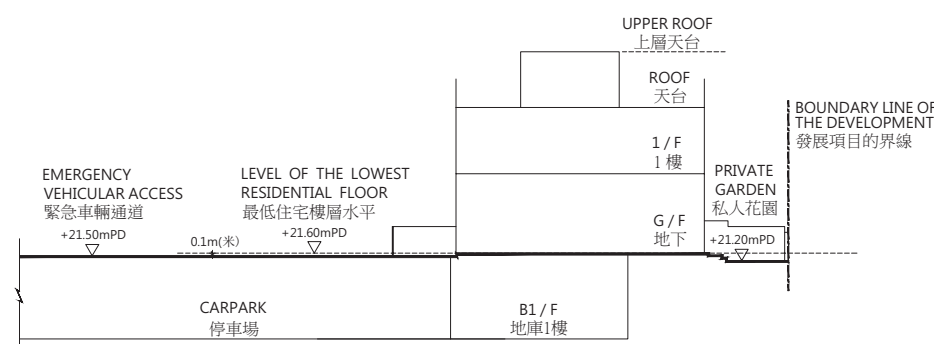
- The part of the Emergency Vehicular Access adjacent to House D19 is 21.50 metres above the Hong Kong Principal Datum.  
毗連D19號洋房的一段緊急車輛通道為香港主水平基準以上21.50米。
- Dotted line denotes the lowest residential floor.  
虛線為最低住宅樓層水平。

\* The levels are based on the survey as carried out by the chartered land surveyor, Patrick Yuen Land Surveyor Co.Ltd. on 31 May 2016.  
水平基準根據特許土地測量師，阮步臻土地測量師行有限公司於2016年5月31日進行的測量。

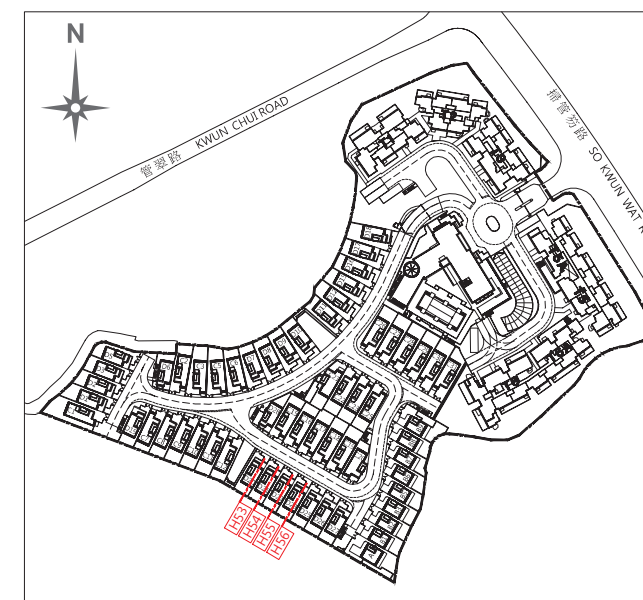


Cross-Section Plan H53  
橫截面圖H53House D20  
D20號洋房

- The part of the Emergency Vehicular Access adjacent to House D20 is 21.50 metres above the Hong Kong Principal Datum.  
毗連D20號洋房的一段緊急車輛通道為香港主水平基準以上21.50米。
- Dotted line denotes the lowest residential floor.  
虛線為最低住宅樓層水平。

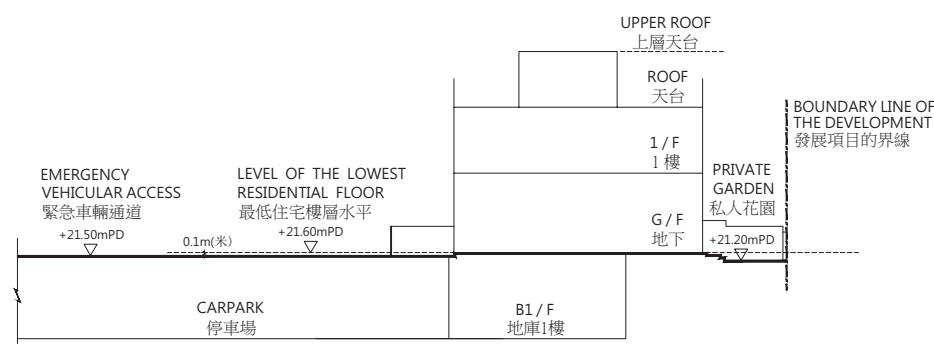
Cross-Section Plan H54  
橫截面圖H54House D21  
D21號洋房

- The part of the Emergency Vehicular Access adjacent to House D21 is 21.50 metres above the Hong Kong Principal Datum.  
毗連D21號洋房的一段緊急車輛通道為香港主水平基準以上21.50米。
- Dotted line denotes the lowest residential floor.  
虛線為最低住宅樓層水平。

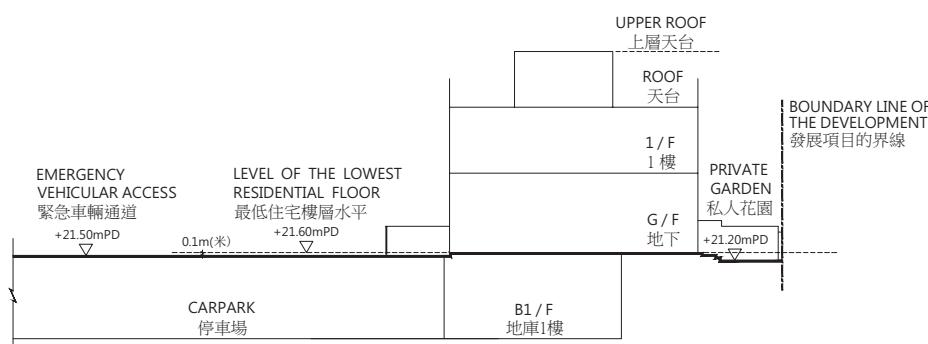
Key Plan  
索引圖

Legend 圖例：

- ▽— Height in metres above Hong Kong Principal Datum (HKPD).  
香港主水平基準以上高度(米)。

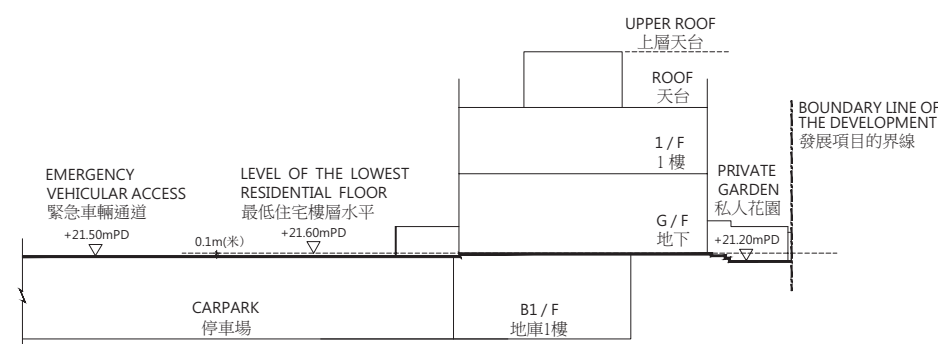
Cross-Section Plan H55  
橫截面圖H55House D22  
D22號洋房

- The part of the Emergency Vehicular Access adjacent to House D22 is 21.50 metres above the Hong Kong Principal Datum.  
毗連D22號洋房的一段緊急車輛通道為香港主水平基準以上21.50米。
- Dotted line denotes the lowest residential floor.  
虛線為最低住宅樓層水平。

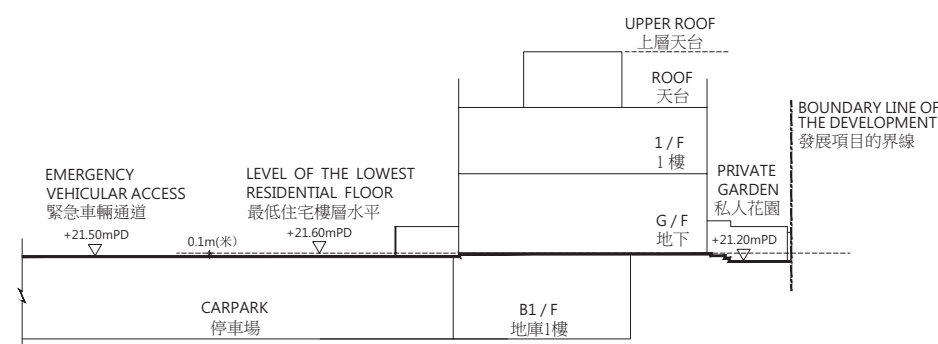
Cross-Section Plan H56  
橫截面圖H56House D23  
D23號洋房

- The part of the Emergency Vehicular Access adjacent to House D23 is 21.50 metres above the Hong Kong Principal Datum.  
毗連D23號洋房的一段緊急車輛通道為香港主水平基準以上21.50米。
- Dotted line denotes the lowest residential floor.  
虛線為最低住宅樓層水平。

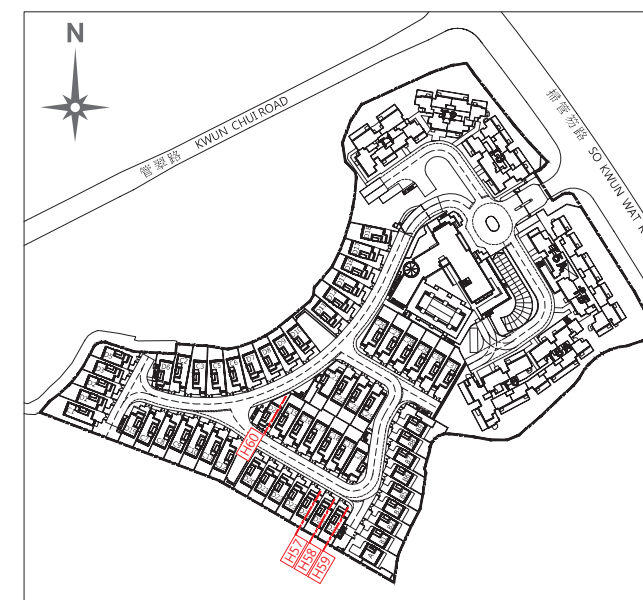
\* The levels are based on the survey as carried out by the chartered land surveyor, Patrick Yuen Land Surveyor Co.Ltd. on 31 May 2016.  
水平基準根據特許土地測量師，阮步臻土地測量師行有限公司於2016年5月31日進行的測量。

Cross-Section Plan H57  
橫截面圖H57House D25  
D25號洋房

- The part of the Emergency Vehicular Access adjacent to House D25 is 21.50 metres above the Hong Kong Principal Datum.  
毗連D25號洋房的一段緊急車輛通道為香港主水平基準以上21.50米。
- Dotted line denotes the lowest residential floor.  
虛線為最低住宅樓層水平。

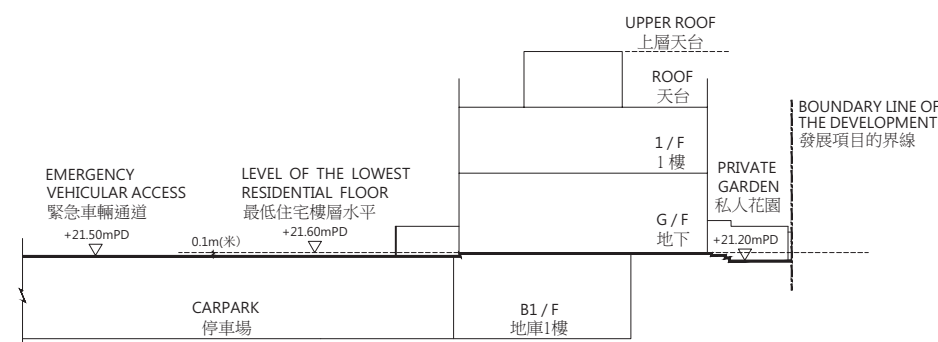
Cross-Section Plan H58  
橫截面圖H58House D26  
D26號洋房

- The part of the Emergency Vehicular Access adjacent to House D26 is 21.50 metres above the Hong Kong Principal Datum.  
毗連D26號洋房的一段緊急車輛通道為香港主水平基準以上21.50米。
- Dotted line denotes the lowest residential floor.  
虛線為最低住宅樓層水平。

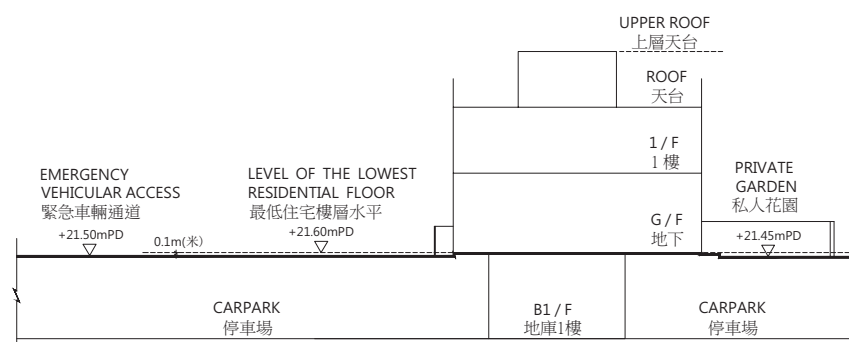
Key Plan  
索引圖

Legend 圖例：

- ▽ Height in metres above Hong Kong Principal Datum (HKPD).  
香港主水平基準以上高度(米)。

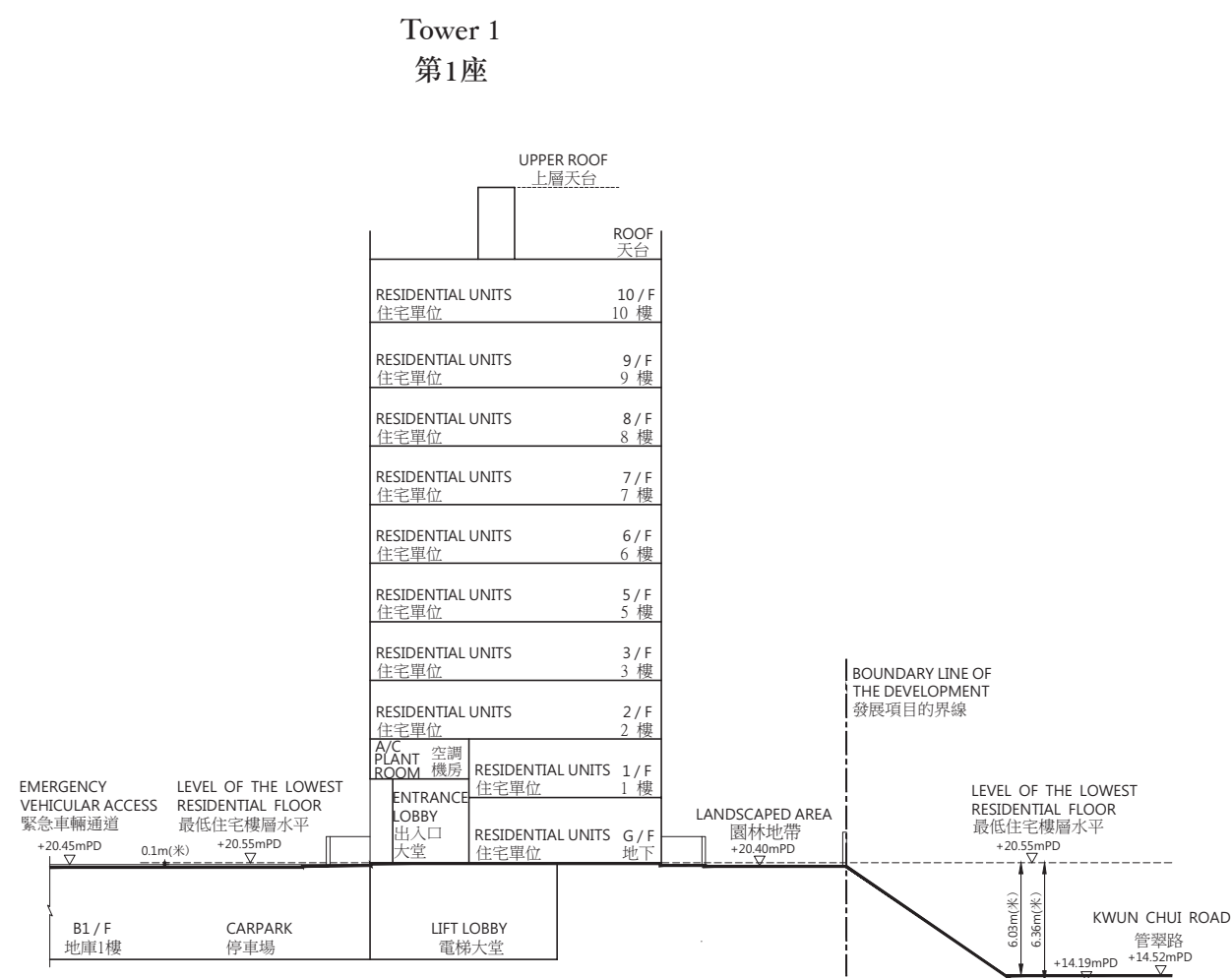
Cross-Section Plan H59  
橫截面圖H59House D27  
D27號洋房

- The part of the Emergency Vehicular Access adjacent to House D27 is 21.50 metres above the Hong Kong Principal Datum.  
毗連D27號洋房的一段緊急車輛通道為香港主水平基準以上21.50米。
- Dotted line denotes the lowest residential floor.  
虛線為最低住宅樓層水平。

Cross-Section Plan H60  
橫截面圖H60House D28  
D28號洋房

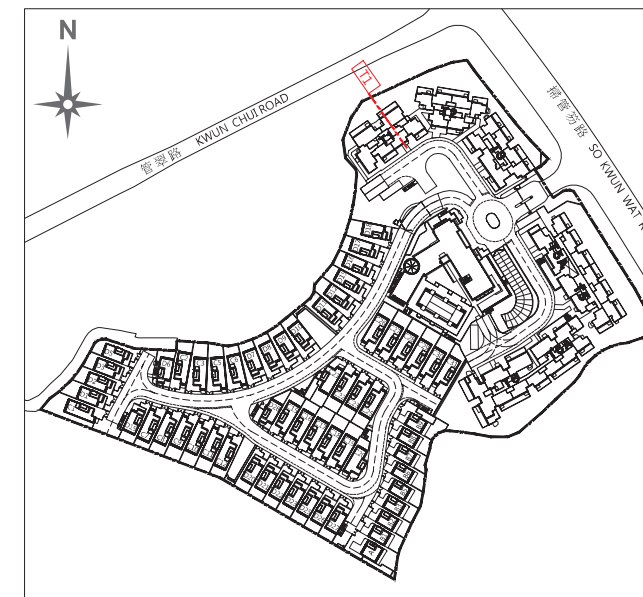
- The part of the Emergency Vehicular Access adjacent to House D28 is 21.50 metres above the Hong Kong Principal Datum.  
毗連D28號洋房的一段緊急車輛通道為香港主水平基準以上21.50米。
- Dotted line denotes the lowest residential floor.  
虛線為最低住宅樓層水平。

\* The levels are based on the survey as carried out by the chartered land surveyor, Patrick Yuen Land Surveyor Co.Ltd. on 31 May 2016.  
水平基準根據特許土地測量師，阮步臻土地測量師行有限公司於2016年5月31日進行的測量。

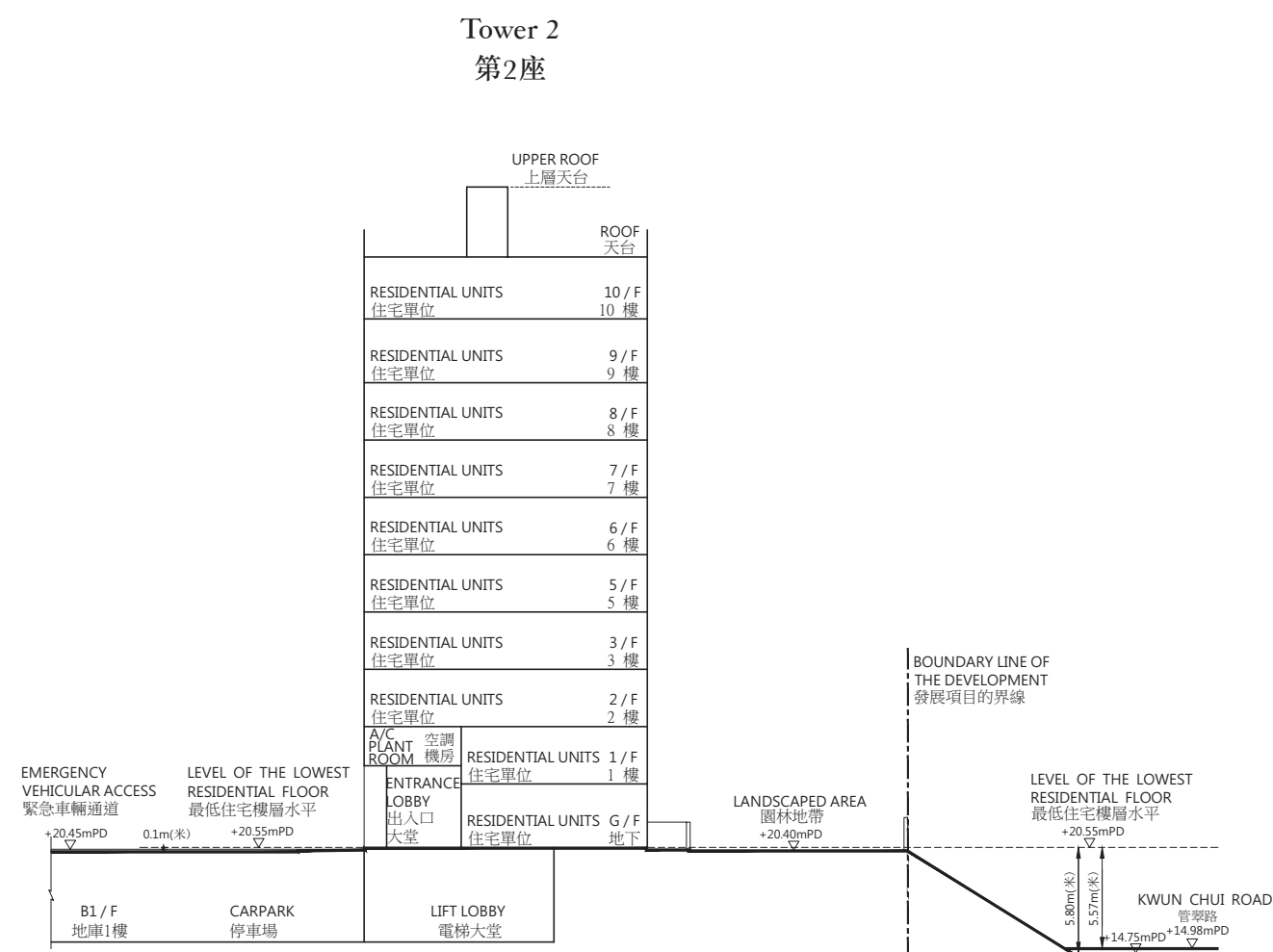
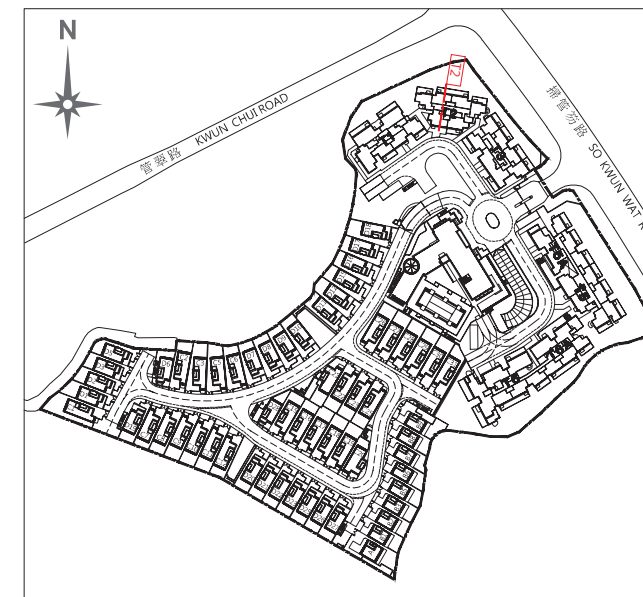
Cross-Section Plan T1  
橫截面圖T1

- The part of the Emergency Vehicular Access adjacent to Tower 1 is 20.45 metres above the Hong Kong Principal Datum.  
毗連第1座的一段緊急車輛通道為香港主水平基準以上20.45米。
- The part of Kwun Chui Road adjacent to Tower 1 is 14.19 to 14.52metres above the Hong Kong Principal Datum.  
毗連第1座的一段管翠路為香港主水平基準以上14.19至14.52米。
- Dotted line denotes the lowest residential floor.  
虛線為最低住宅樓層水平。

\* The levels are based on the survey as carried out by the chartered land surveyor, Patrick Yuen Land Surveyor Co.Ltd. on 31 May 2016.  
水平基準根據特許土地測量師，阮步臻土地測量師行有限公司於2016年5月31日進行的測量。

Key Plan  
索引圖



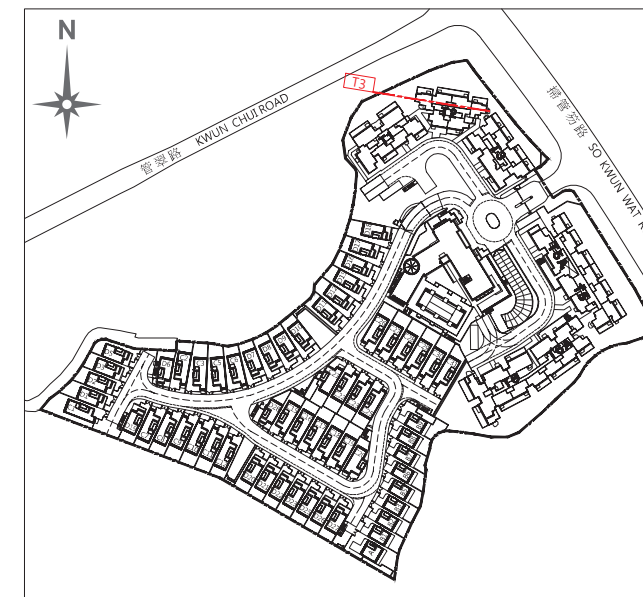
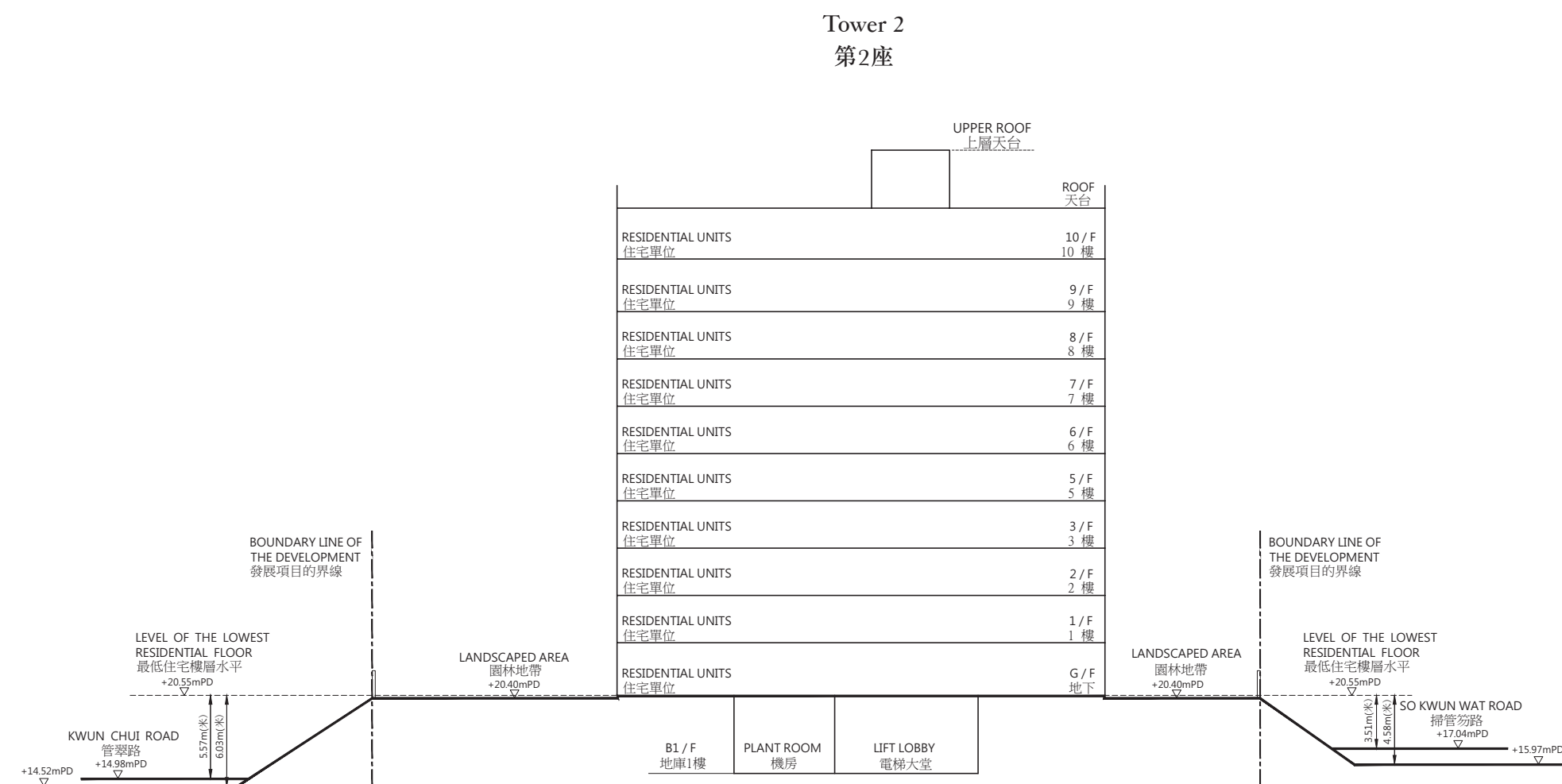
Cross-Section Plan T2  
橫截面圖T2Key Plan  
索引圖

- The part of the Emergency Vehicular Access adjacent to Tower 2 is 20.45 metres above the Hong Kong Principal Datum.  
毗連第2座的一段緊急車輛通道為香港主水平基準以上20.45米。
- The part of Kwun Chui Road adjacent to Tower 2 is 14.75 to 14.98metres above the Hong Kong Principal Datum.  
毗連第2座的一段管翠路為香港主水平基準以上14.75至14.98米。
- Dotted line denotes the lowest residential floor.  
虛線為最低住宅樓層水平。

\* The levels are based on the survey as carried out by the chartered land surveyor, Patrick Yuen Land Surveyor Co.Ltd. on 31 May 2016.  
水平基準根據特許土地測量師，阮步臻土地測量師行有限公司於2016年5月31日進行的測量。

Cross-Section Plan T3  
橫截面圖T3

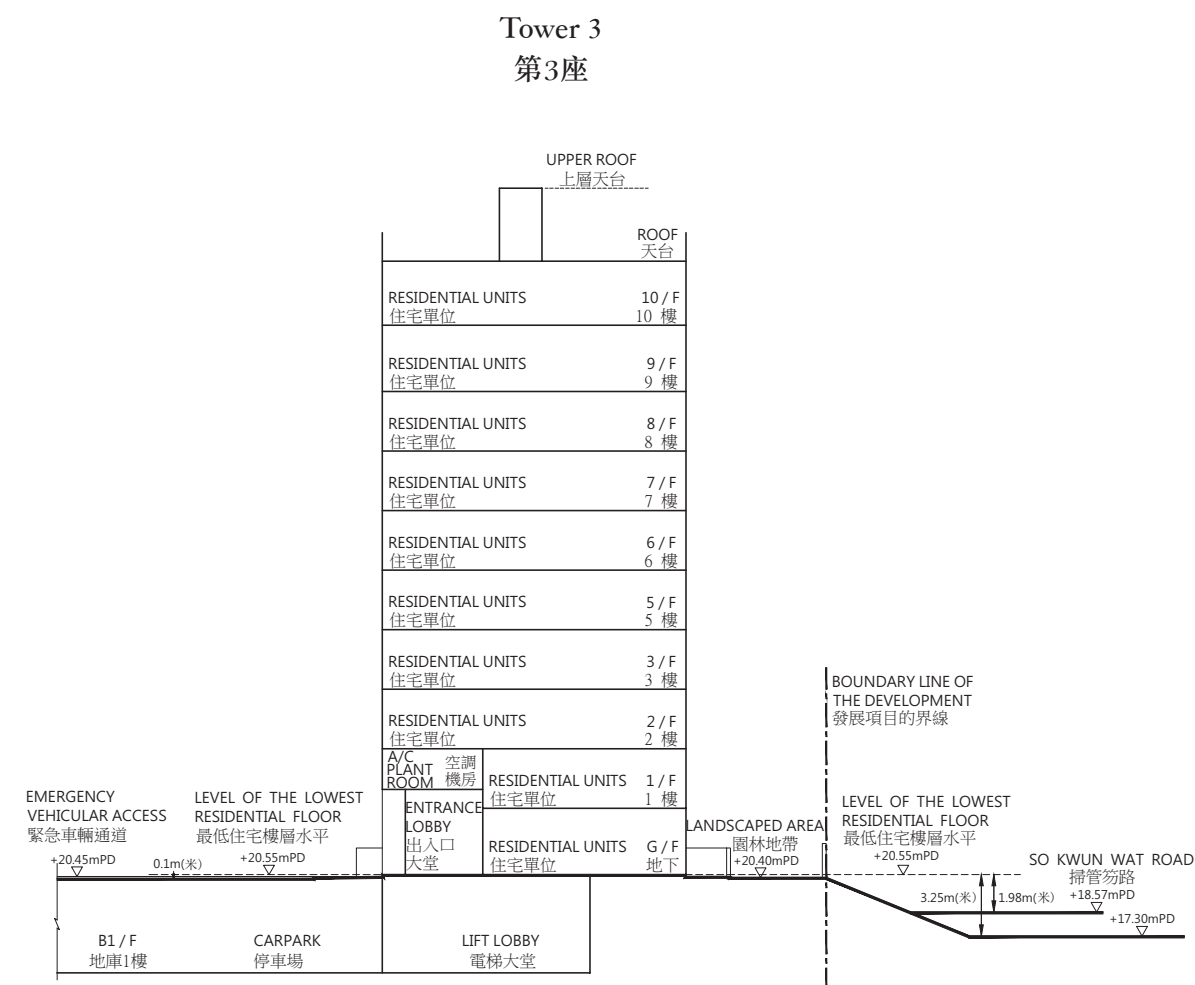
Key Plan  
索引圖



- The part of So Kwun Wat Road adjacent to Tower 2 is 15.97 to 17.04 metres above the Hong Kong Principal Datum.  
毗連第2座的一段掃管笏路為香港主水平基準以上15.97至17.04米。
- The part of Kwun Chui Road adjacent to Tower 2 is 14.52 to 14.98 metres above the Hong Kong Principal Datum.  
毗連第2座的一段管翠路為香港主水平基準以上14. 52至14.98米。
- Dotted line denotes the lowest residential floor.  
虛線為最低住宅樓層水平。

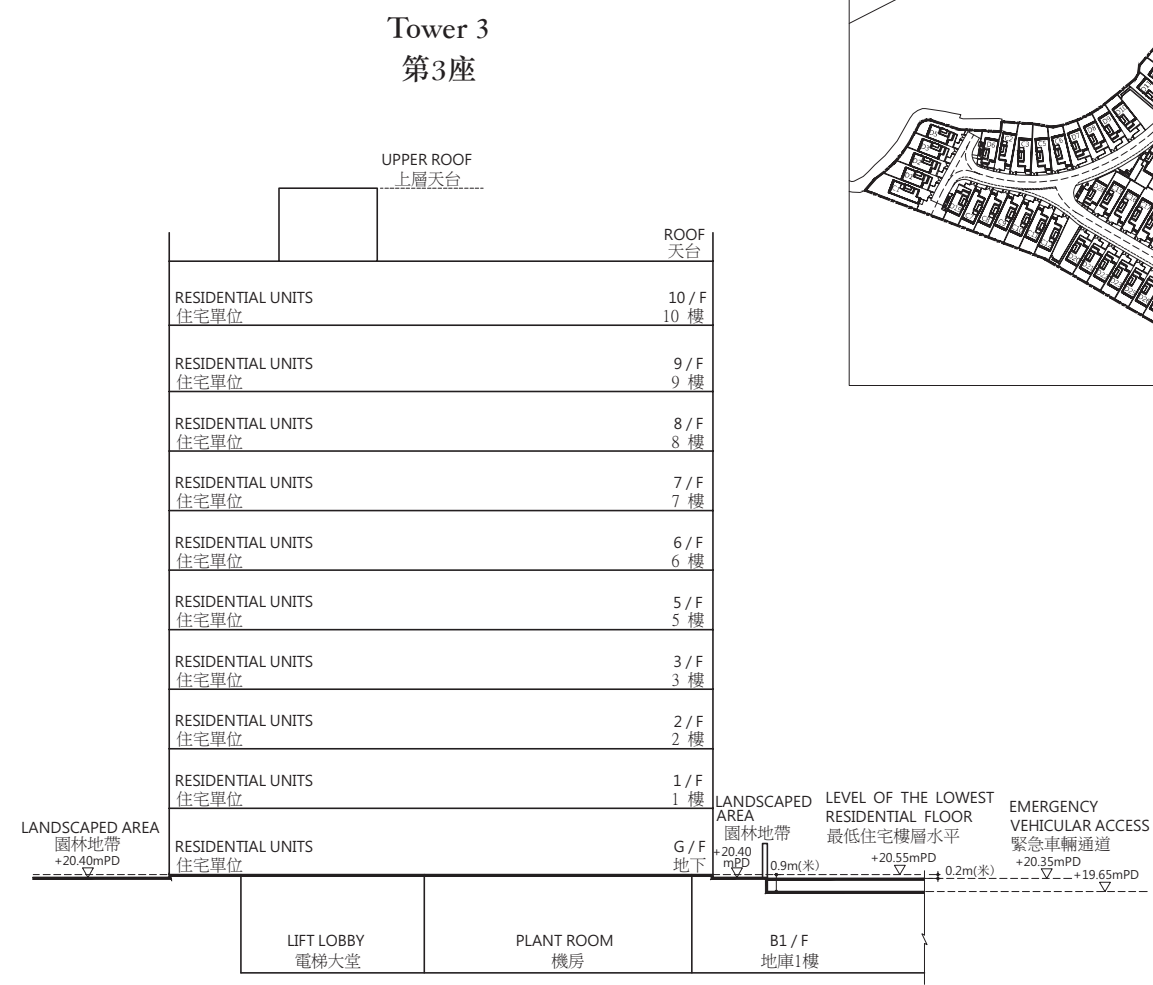
\* The levels are based on the survey as carried out by the chartered land surveyor, Patrick Yuen Land Surveyor Co.Ltd. on 31 May 2016.  
水平基準根據特許土地測量師，阮步臻土地測量師行有限公司於2016年5月31日進行的測量。

### Cross-Section Plan T4 橫截面圖T4



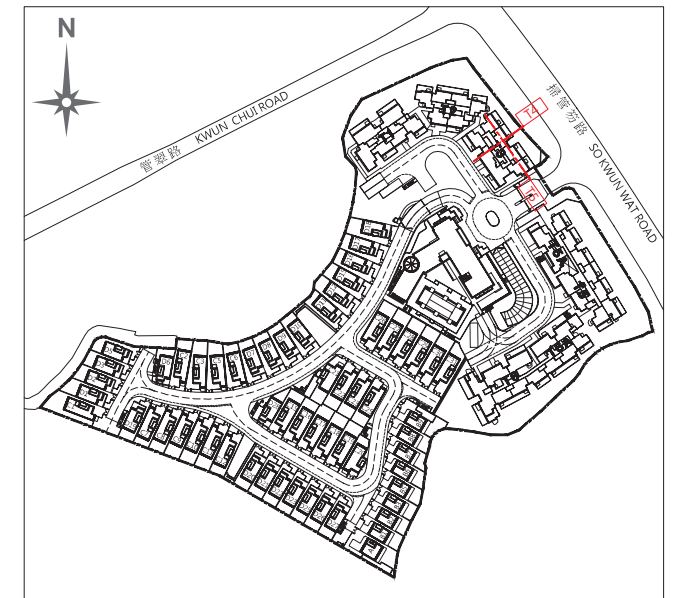
- The part of the Emergency Vehicular Access adjacent to Tower 3 is 20.45 metres above the Hong Kong Principal Datum.  
毗連第3座的一段緊急車輛通道為香港主水平基準以上20.45米。
- The part of So Kwun Wat Road adjacent to Tower 3 is 17.30 to 18.57 metres above the Hong Kong Principal Datum.  
毗連第3座的一段掃管笏路為香港主水平基準以上17.30至18.57米。
- Dotted line denotes the lowest residential floor.  
虛線為最低住宅樓層水平。

### Cross-Section Plan T5 橫截面圖T5



- The part of the Emergency Vehicular Access adjacent to Tower 3 is 19.65 to 20.35 metres above the Hong Kong Principal Datum.  
毗連第3座的一段緊急車輛通道為香港主水平基準以上19.65至20.35米。
- Dotted line denotes the lowest residential floor.  
虛線為最低住宅樓層水平。

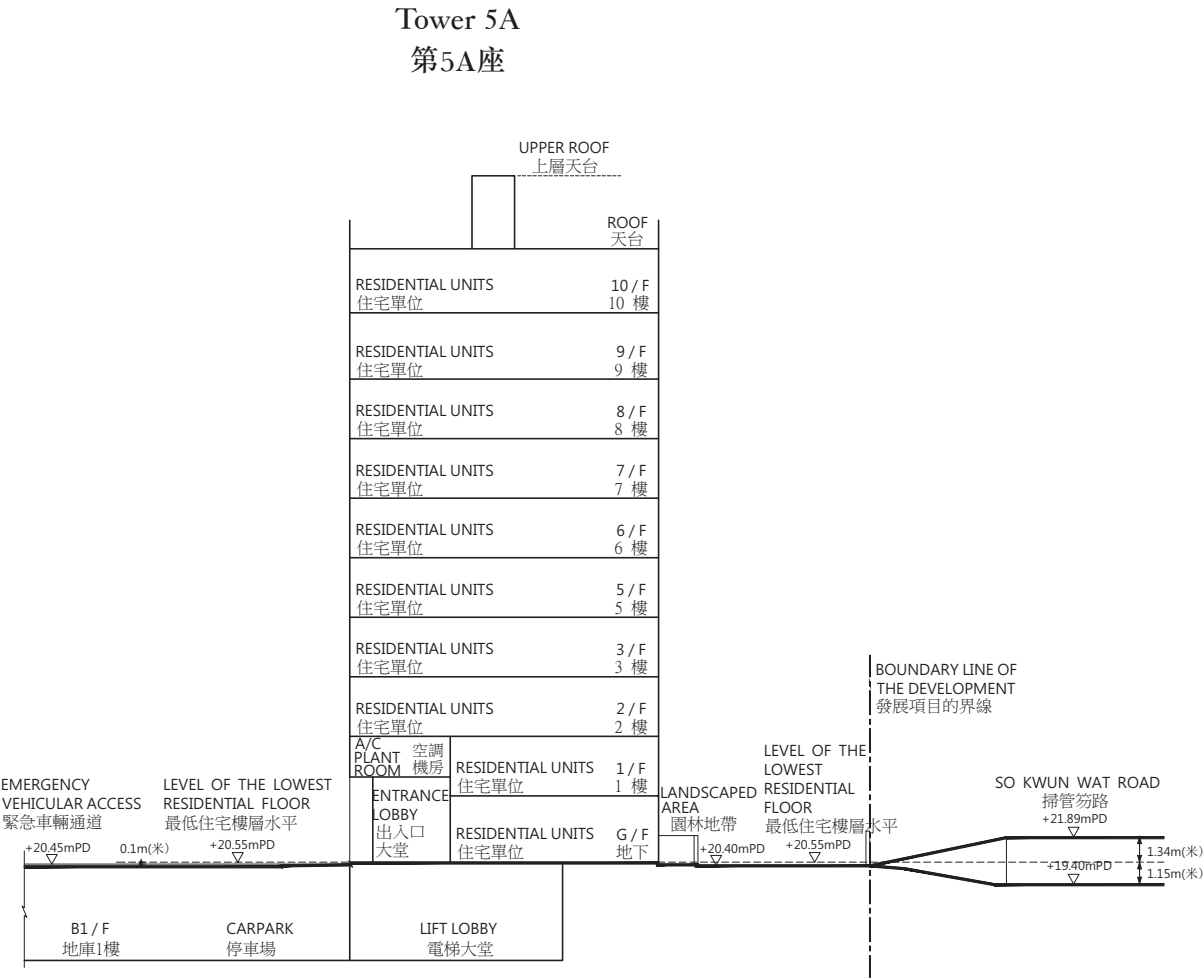
Key Plan  
索引圖

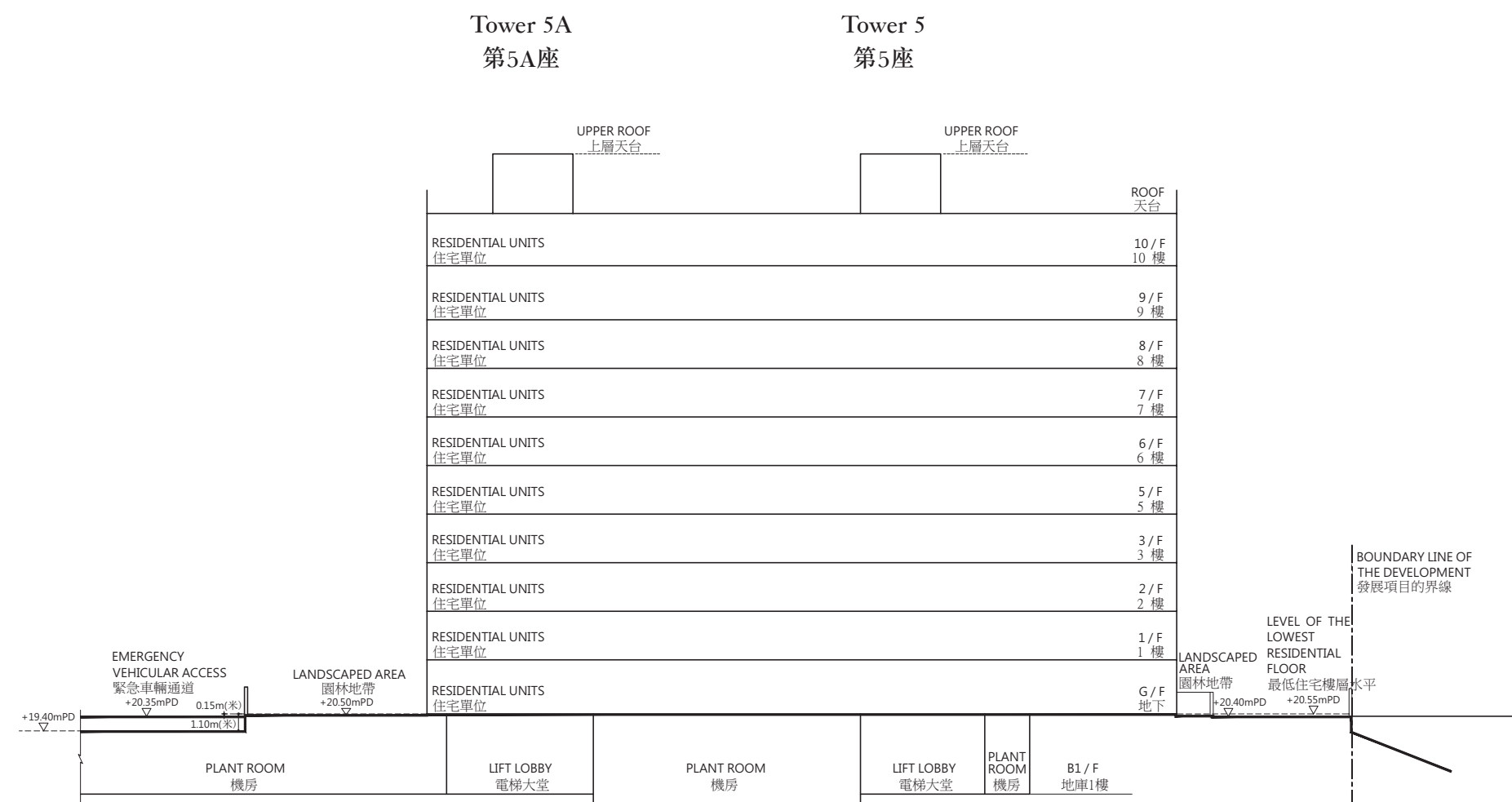


\* The levels are based on the survey as carried out by the chartered land surveyor, Patrick Yuen Land Surveyor Co.Ltd. on 31 May 2016.  
水平基準根據特許土地測量師，阮步臻土地測量師行有限公司於2016年5月31日進行的測量。



Cross-Section Plan T6  
橫截面圖T6



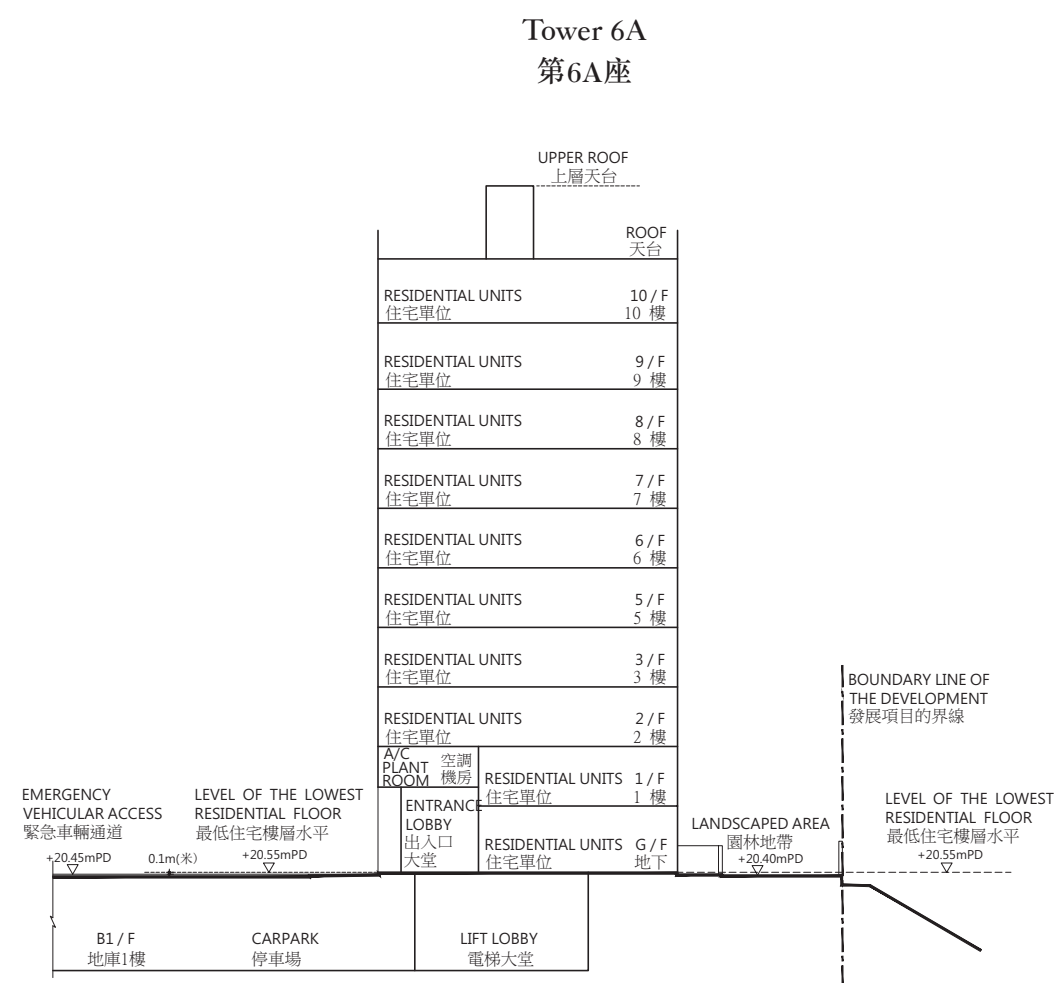
Cross-Section Plan T8  
橫截面圖T8Key Plan  
索引圖

- The part of the Emergency Vehicular Access adjacent to Tower 5A and Tower 5 is 19.40 to 20.35 metres above the Hong Kong Principal Datum.  
毗連第5A座及第5座的一段緊急車輛通道為香港主水平基準以上19.40至20.35米。
- Dotted line denotes the lowest residential floor.  
虛線為最低住宅樓層水平。

\* The levels are based on the survey as carried out by the chartered land surveyor, Patrick Yuen Land Surveyor Co.Ltd. on 31 May 2016.  
水平基準根據特許土地測量師，阮步臻土地測量師行有限公司於2016年5月31日進行的測量。

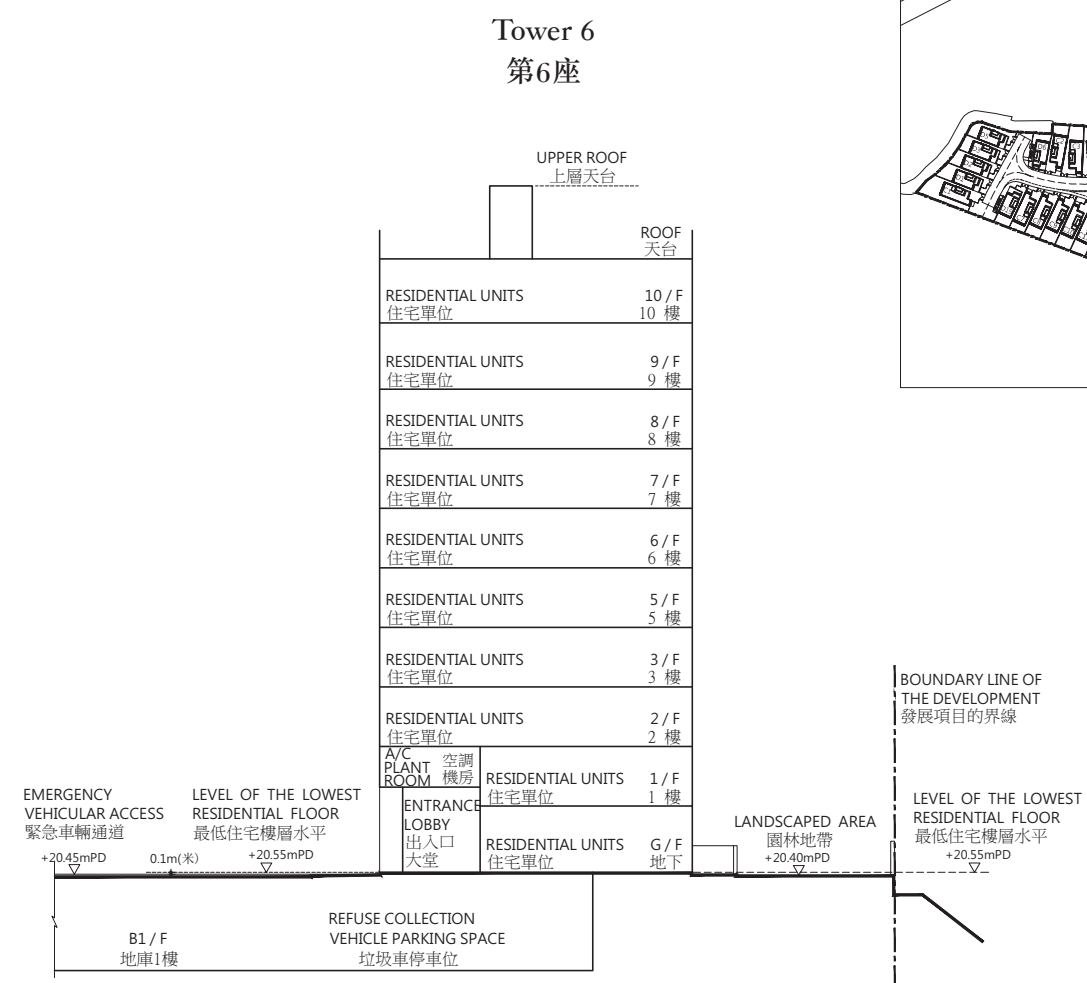


Cross-Section Plan T9  
橫截面圖T9



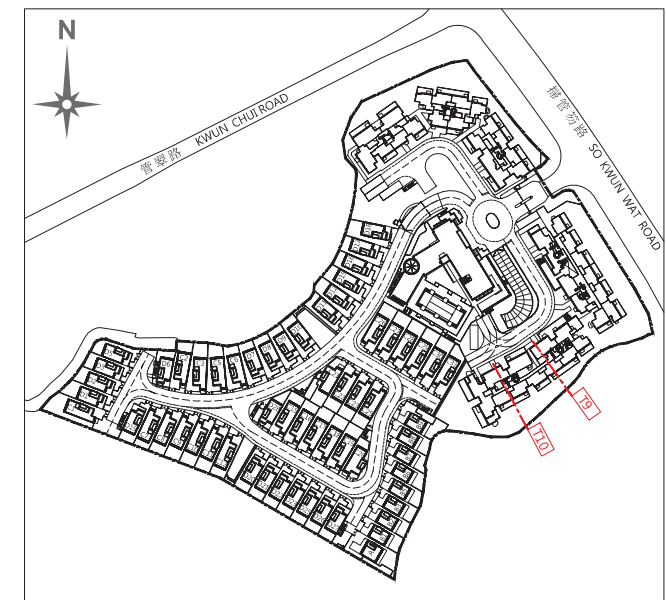
- The part of the Emergency Vehicular Access adjacent to Tower 6A is 20.45 metres above the Hong Kong Principal Datum.  
毗連第6A座的一段緊急車輛通道為香港主水平基準以上20.45米。
- Dotted line denotes the lowest residential floor.  
虛線為最低住宅樓層水平。

Cross-Section Plan T10  
橫截面圖T10



- The part of the Emergency Vehicular Access adjacent to Tower 6 is 20.45 metres above the Hong Kong Principal Datum.  
毗連第6座的一段緊急車輛通道為香港主水平基準以上20.45米。
- Dotted line denotes the lowest residential floor.  
虛線為最低住宅樓層水平。

Key Plan  
索引圖



\* The levels are based on the survey as carried out by the chartered land surveyor, Patrick Yuen Land Surveyor Co.Ltd. on 31 May 2016.  
水平基準根據特許土地測量師，阮步臻土地測量師行有限公司於2016年5月31日進行的測量。