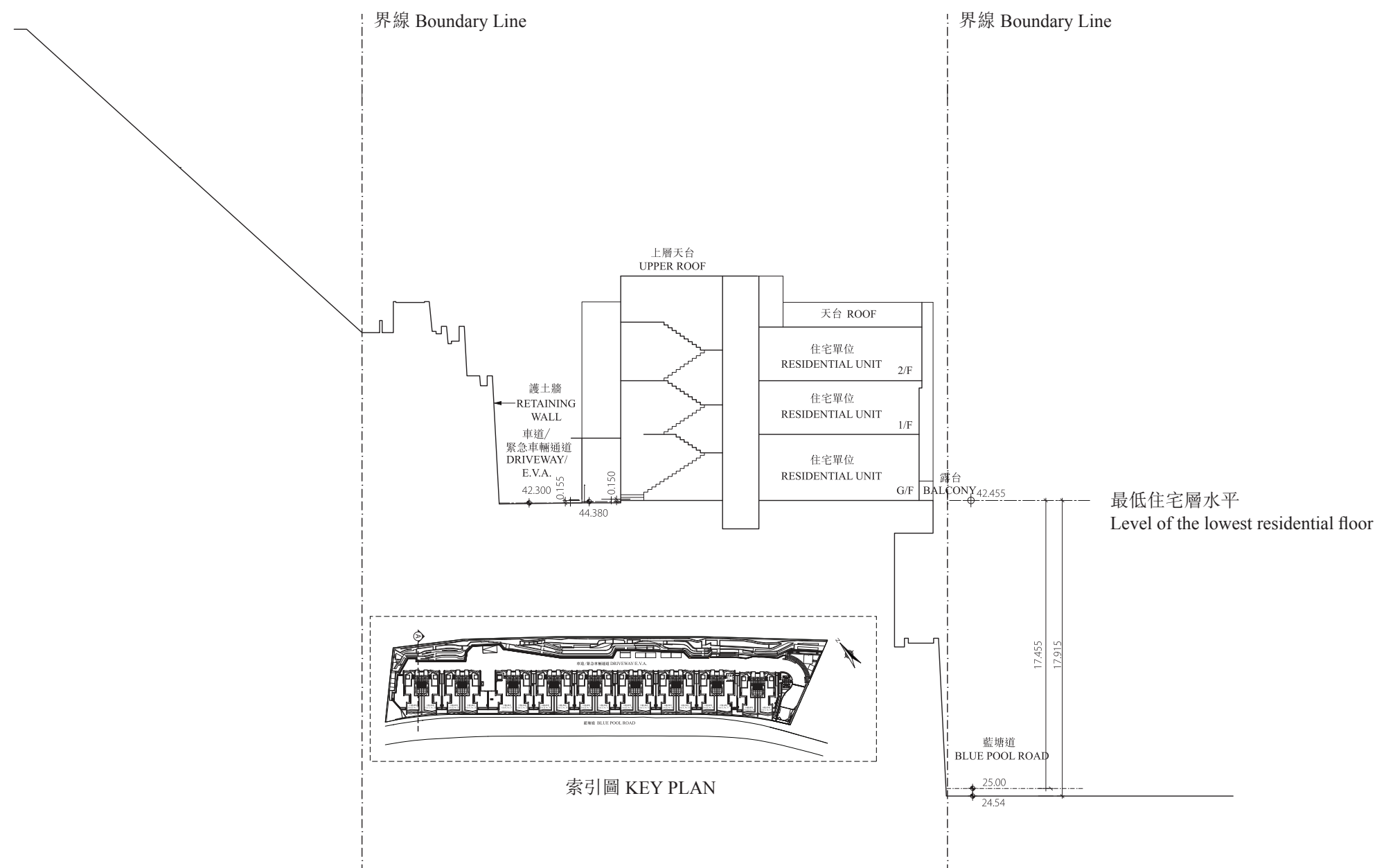


20 | 發展項目中的建築物的橫截面圖

CROSS-SECTION PLAN OF BUILDING IN THE DEVELOPMENT

藍塘道23號* – 橫截面圖 A-A
No. 23 Blue Pool Road* – Cross-Section Plan A-A



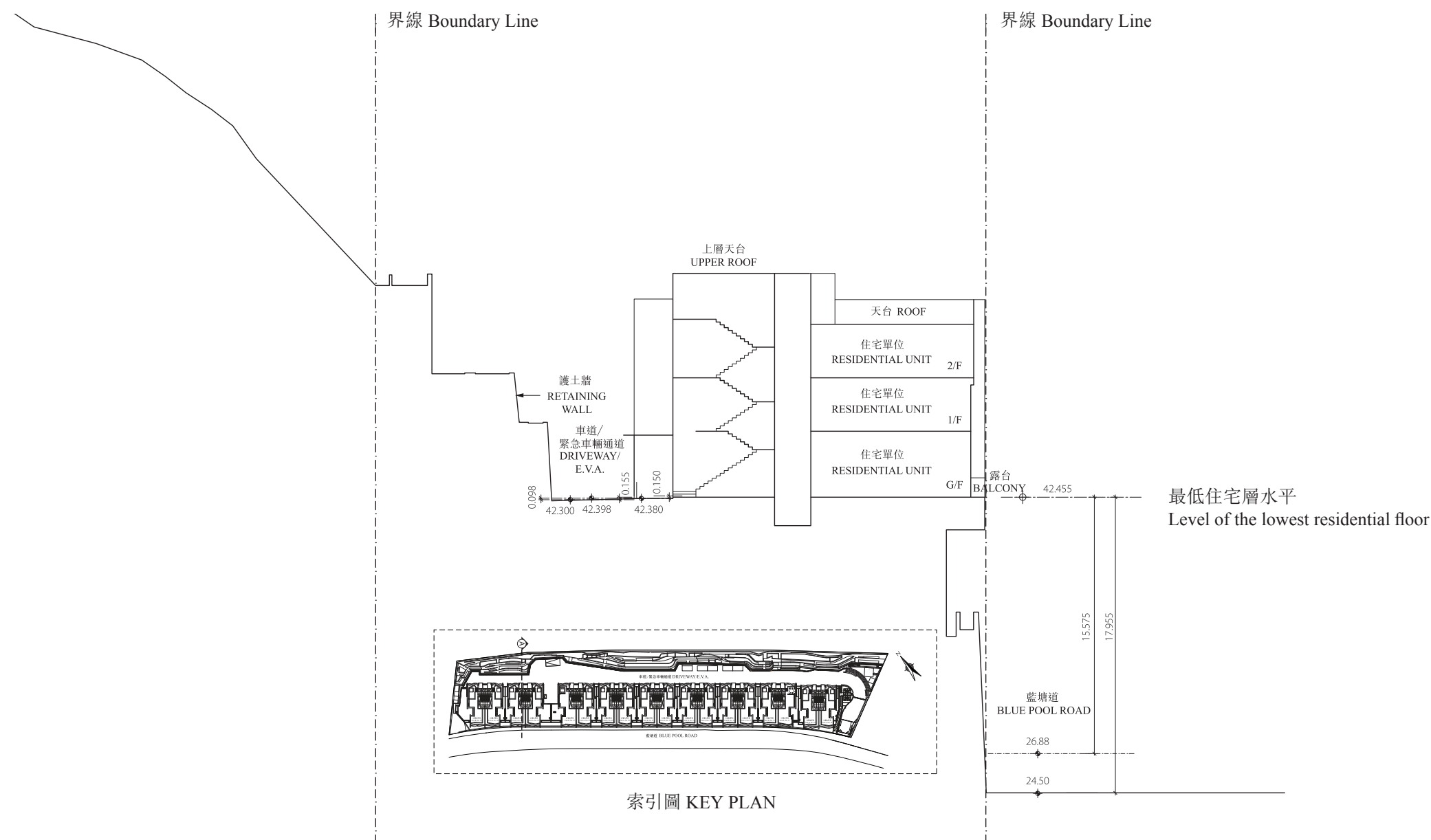
1. 毗連建築物的一段藍塘道為香港主水平基準以上 24.54 至 25.00 米。
The part of Blue Pool Road adjacent to the building is 24.54 to 25.00 metres above the Hong Kong Principal Datum.
2. 毗連建築物的一段車道/緊急車輛通道為香港主水平基準以上 42.300 米。
The part of Driveway/ Emergency Vehicular Access (E.V.A.) adjacent to the building is 42.300 metres above the Hong Kong Principal Datum.
3. 與香港主水平基準相對的水平以米表示。
The levels in relation to Hong Kong Principal Datum are given in metres.

* 亦稱為 10 號屋
also known as House 10

20 | 發展項目中的建築物的橫截面圖

CROSS-SECTION PLAN OF BUILDING IN THE DEVELOPMENT

藍塘道25號* – 橫截面圖 A-A
No. 25 Blue Pool Road* – Cross-Section Plan A-A



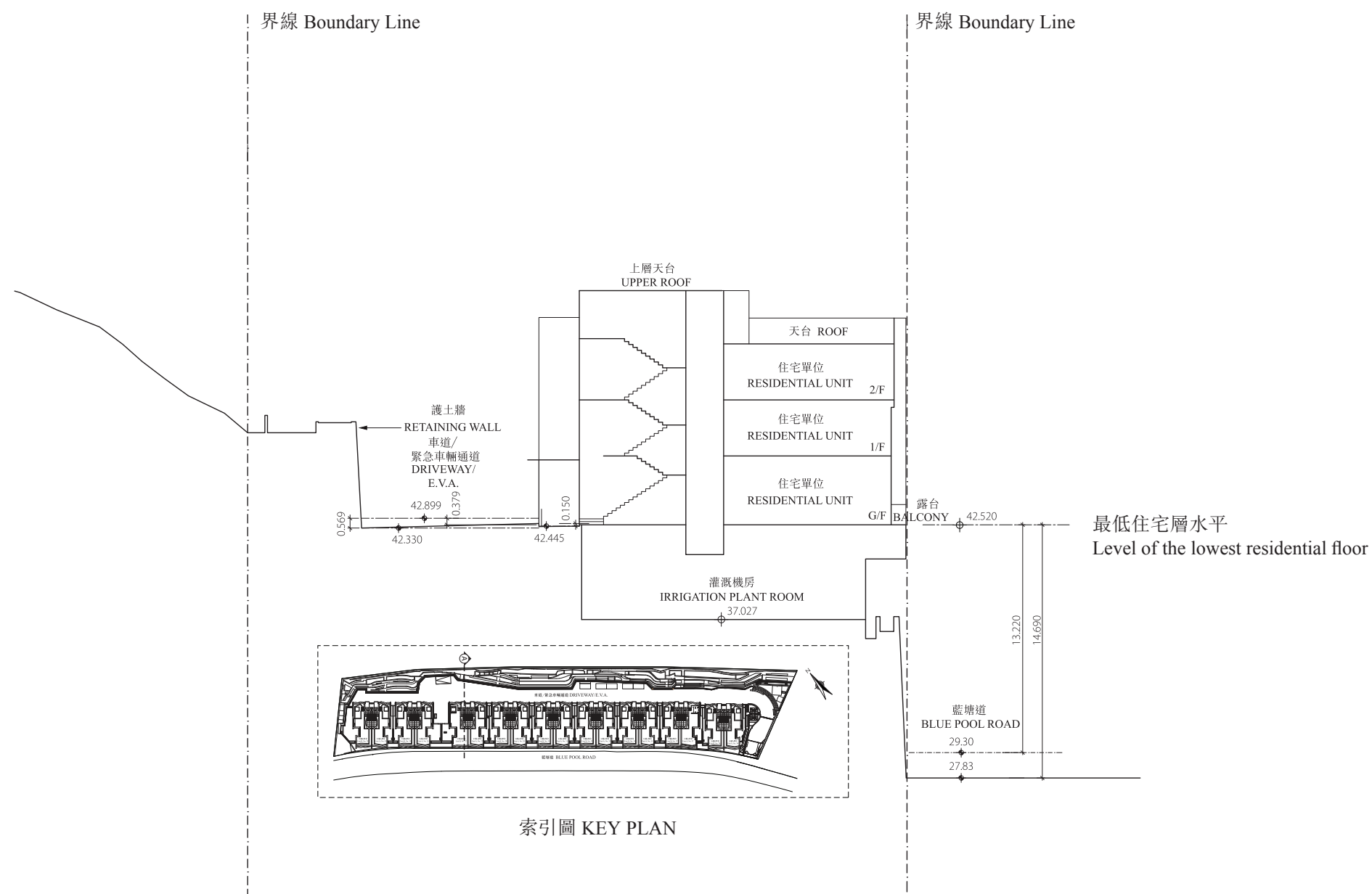
1. 毗連建築物的一段藍塘道為香港主水平基準以上 24.50 至 26.88 米。
The part of Blue Pool Road adjacent to the building is 24.50 to 26.88 metres above the Hong Kong Principal Datum.
2. 毗連建築物的一段車道/緊急車輛通道為香港主水平基準以上 42.300 至 42.398 米。
The part of Driveway/ Emergency Vehicular Access (E.V.A.) adjacent to the building is 42.300 to 42.398 metres above the Hong Kong Principal Datum.
3. 與香港主水平基準相對的水平以米表示。
The levels in relation to Hong Kong Principal Datum are given in metres.

* 亦稱為 9 號屋
also known as House 9

20 | 發展項目中的建築物的橫截面圖

CROSS-SECTION PLAN OF BUILDING IN THE DEVELOPMENT

藍塘道27號* – 橫截面圖 A-A
No. 27 Blue Pool Road* – Cross-Section Plan A-A



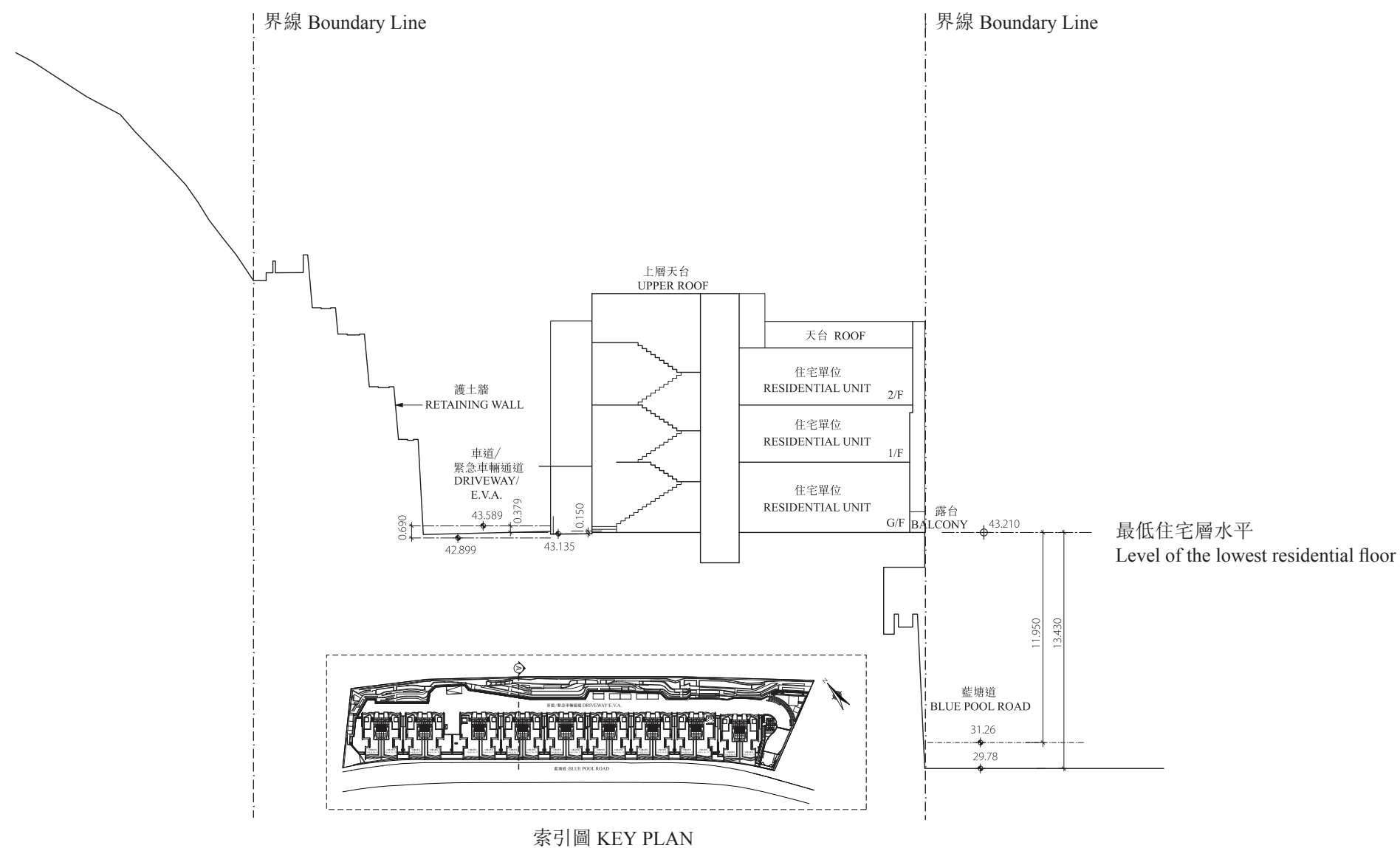
1. 毗連建築物的一段藍塘道為香港主水平基準以上 27.83 至 29.30 米。
The part of Blue Pool Road adjacent to the building is 27.83 to 29.30 metres above the Hong Kong Principal Datum.
2. 毗連建築物的一段車道/緊急車輛通道為香港主水平基準以上 42.330 至 42.899 米。
The part of Driveway/ Emergency Vehicular Access (E.V.A.) adjacent to the building is 42.330 to 42.899 metres above the Hong Kong Principal Datum.
3. 與香港主水平基準相對的水平以米表示。
The levels in relation to Hong Kong Principal Datum are given in metres.

* 亦稱為 8 號屋
also known as House 8

20 | 發展項目中的建築物的橫截面圖

CROSS-SECTION PLAN OF BUILDING IN THE DEVELOPMENT

藍塘道29號* – 橫截面圖 A-A
No. 29 Blue Pool Road* – Cross-Section Plan A-A



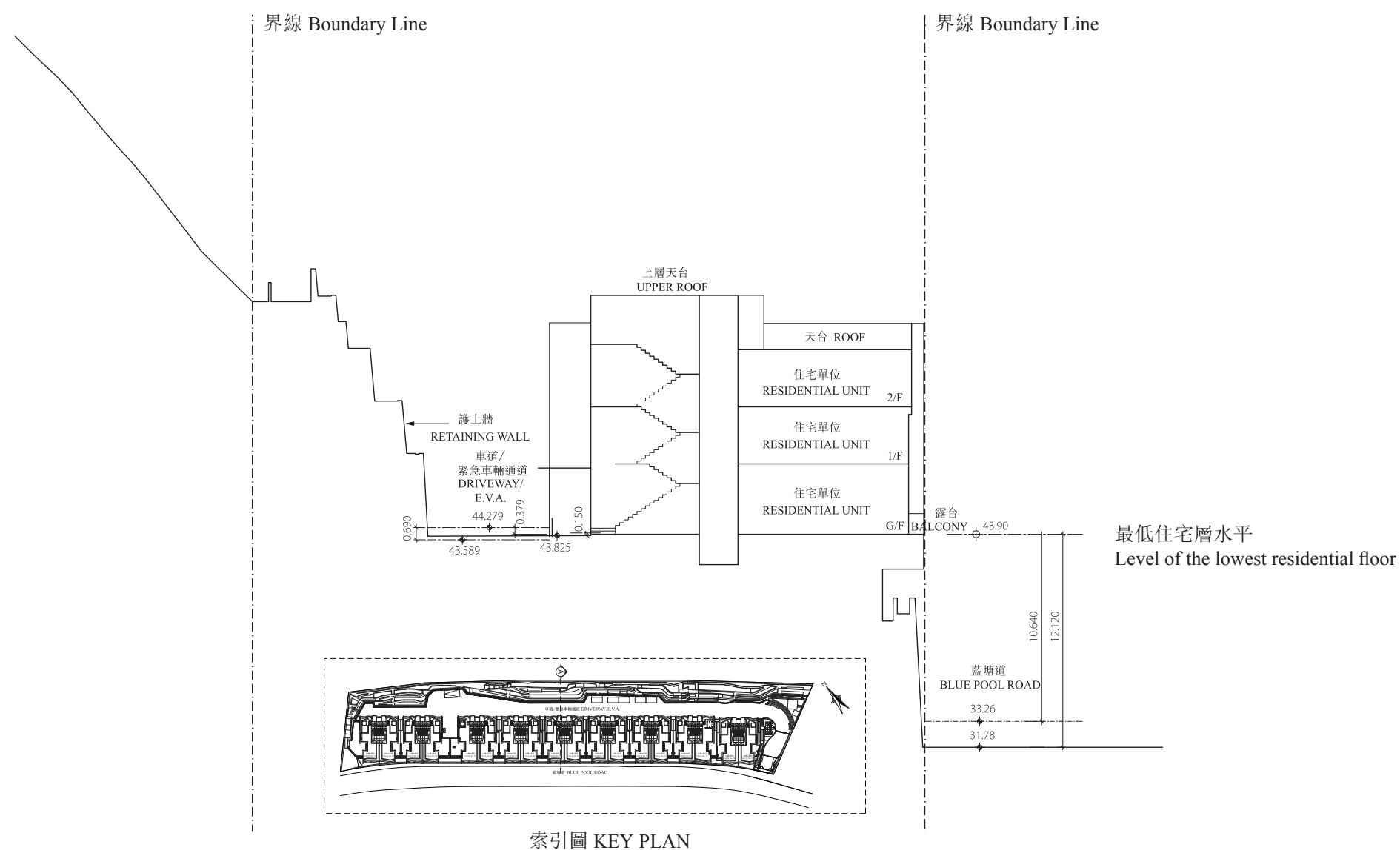
1. 毗連建築物的一段藍塘道為香港主水平基準以上 29.78 至 31.26 米。
The part of Blue Pool Road adjacent to the building is 29.78 to 31.26 metres above the Hong Kong Principal Datum.
2. 毗連建築物的一段車道/緊急車輛通道為香港主水平基準以上 42.899 至 43.589 米。
The part of Driveway/ Emergency Vehicular Access (E.V.A.) adjacent to the building is 42.899 to 43.589 metres above the Hong Kong Principal Datum.
3. 與香港主水平基準相對的水平以米表示。
The levels in relation to Hong Kong Principal Datum are given in metres.

* 亦稱為 7 號屋
also known as House 7

20 | 發展項目中的建築物的橫截面圖

CROSS-SECTION PLAN OF BUILDING IN THE DEVELOPMENT

藍塘道31號* – 橫截面圖 A-A
No. 31 Blue Pool Road* – Cross-Section Plan A-A



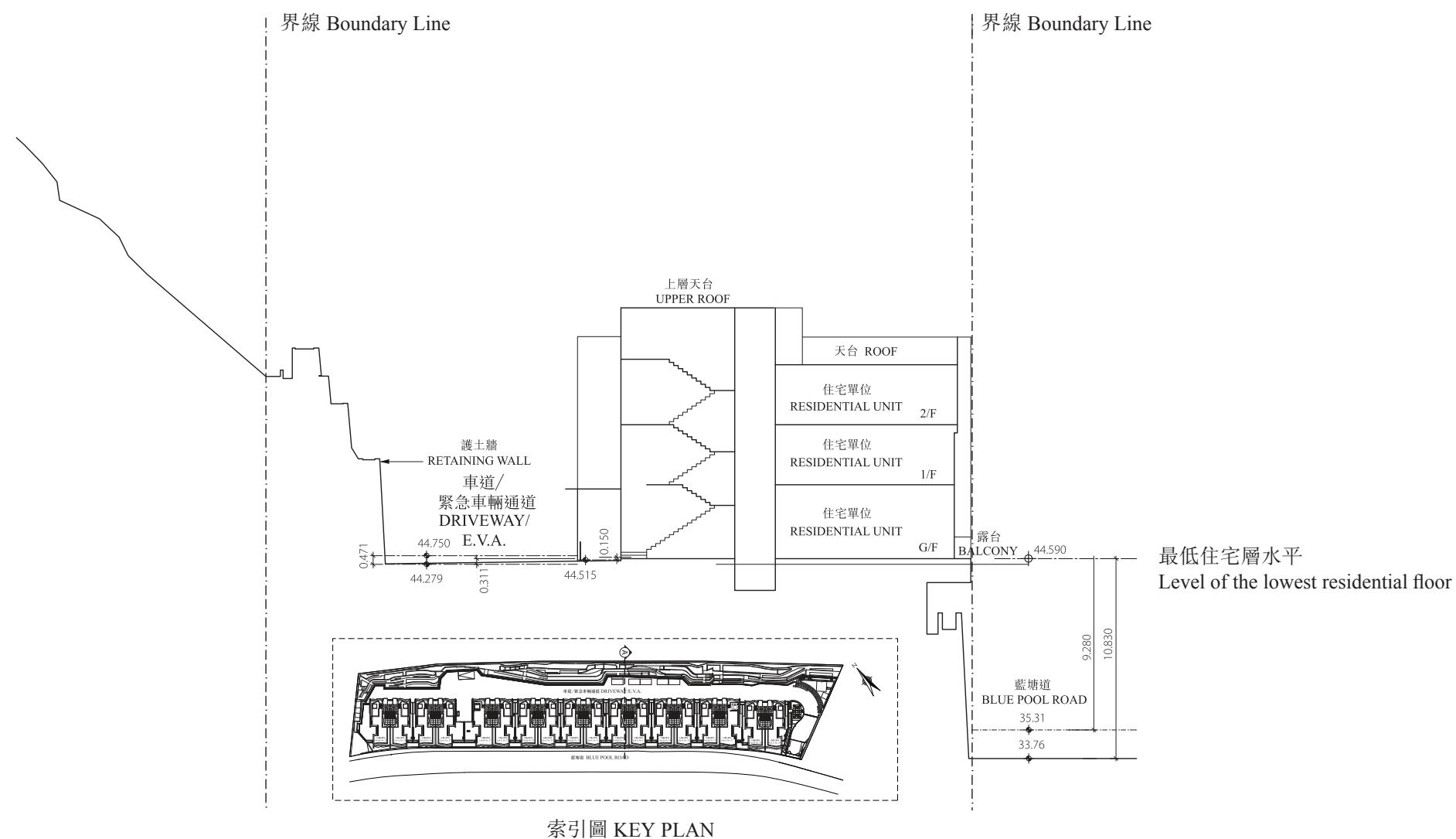
1. 毗連建築物的一段藍塘道為香港主水平基準以上31.78至33.26米。
The part of Blue Pool Road adjacent to the building is 31.78 to 33.26 metres above the Hong Kong Principal Datum.
2. 毗連建築物的一段車道/緊急車輛通道為香港主水平基準以上43.589至44.279米。
The part of Driveway/ Emergency Vehicular Access (E.V.A.) adjacent to the building is 43.589 to 44.279 metres above the Hong Kong Principal Datum.
3. 與香港主水平基準相對的水平以米表示。
The levels in relation to Hong Kong Principal Datum are given in metres.

* 亦稱為6號屋
also known as House 6

20 | 發展項目中的建築物的橫截面圖

CROSS-SECTION PLAN OF BUILDING IN THE DEVELOPMENT

藍塘道33號* – 橫截面圖 A-A
No. 33 Blue Pool Road* – Cross-Section Plan A-A



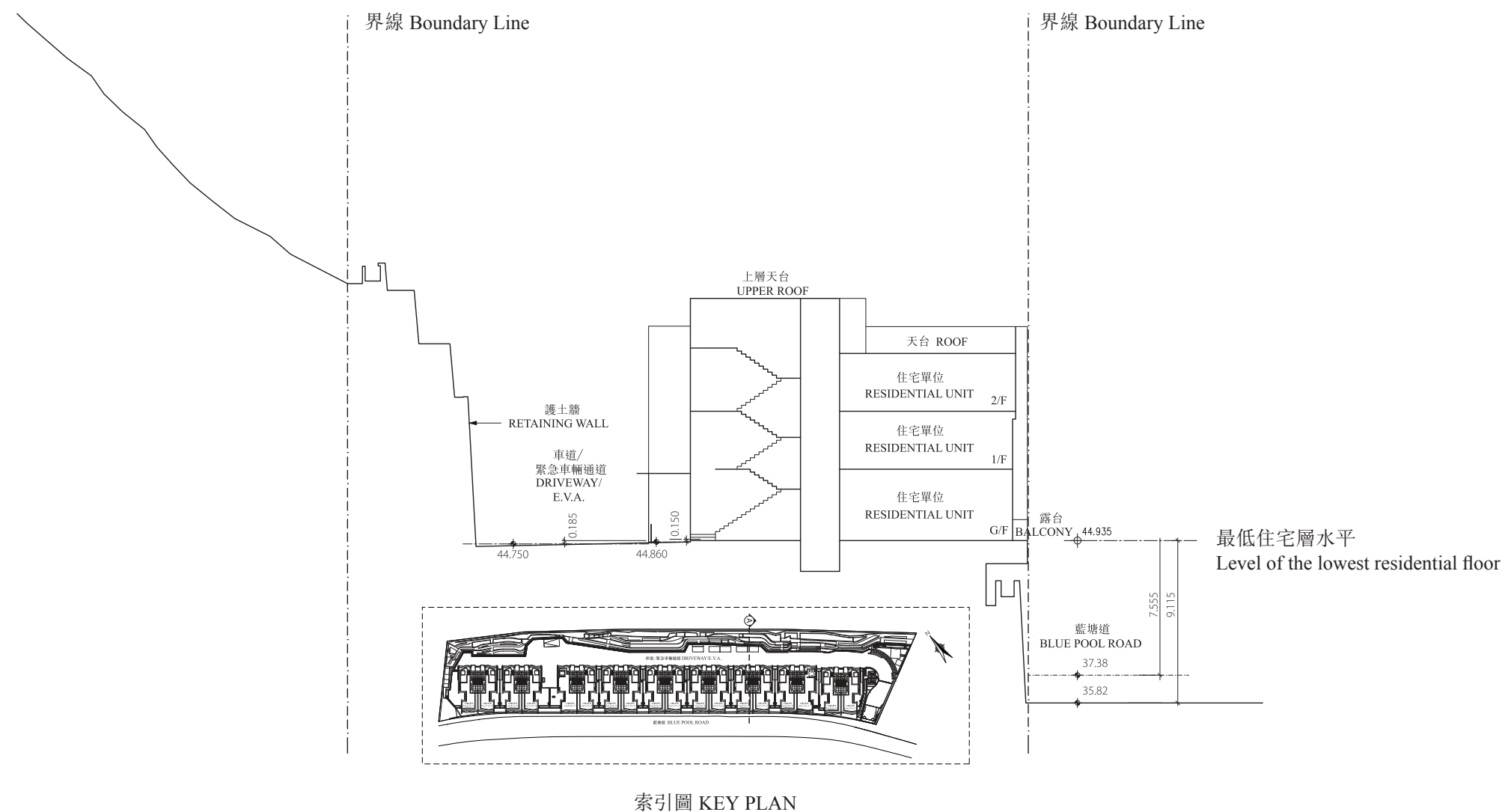
1. 毗連建築物的一段藍塘道為香港主水平基準以上 33.76 至 35.31 米。
The part of Blue Pool Road adjacent to the building is 33.76 to 35.31 metres above the Hong Kong Principal Datum.
2. 毗連建築物的一段車道/緊急車輛通道為香港主水平基準以上 44.279 至 44.750 米。
The part of Driveway/ Emergency Vehicular Access (E.V.A.) adjacent to the building is 44.279 to 44.750 metres above the Hong Kong Principal Datum.
3. 與香港主水平基準相對的水平以米表示。
The levels in relation to Hong Kong Principal Datum are given in metres.

* 亦稱為 5 號屋
also known as House 5

20 | 發展項目中的建築物的橫截面圖

CROSS-SECTION PLAN OF BUILDING IN THE DEVELOPMENT

藍塘道35號* – 橫截面圖 A-A
No. 35 Blue Pool Road* – Cross-Section Plan A-A



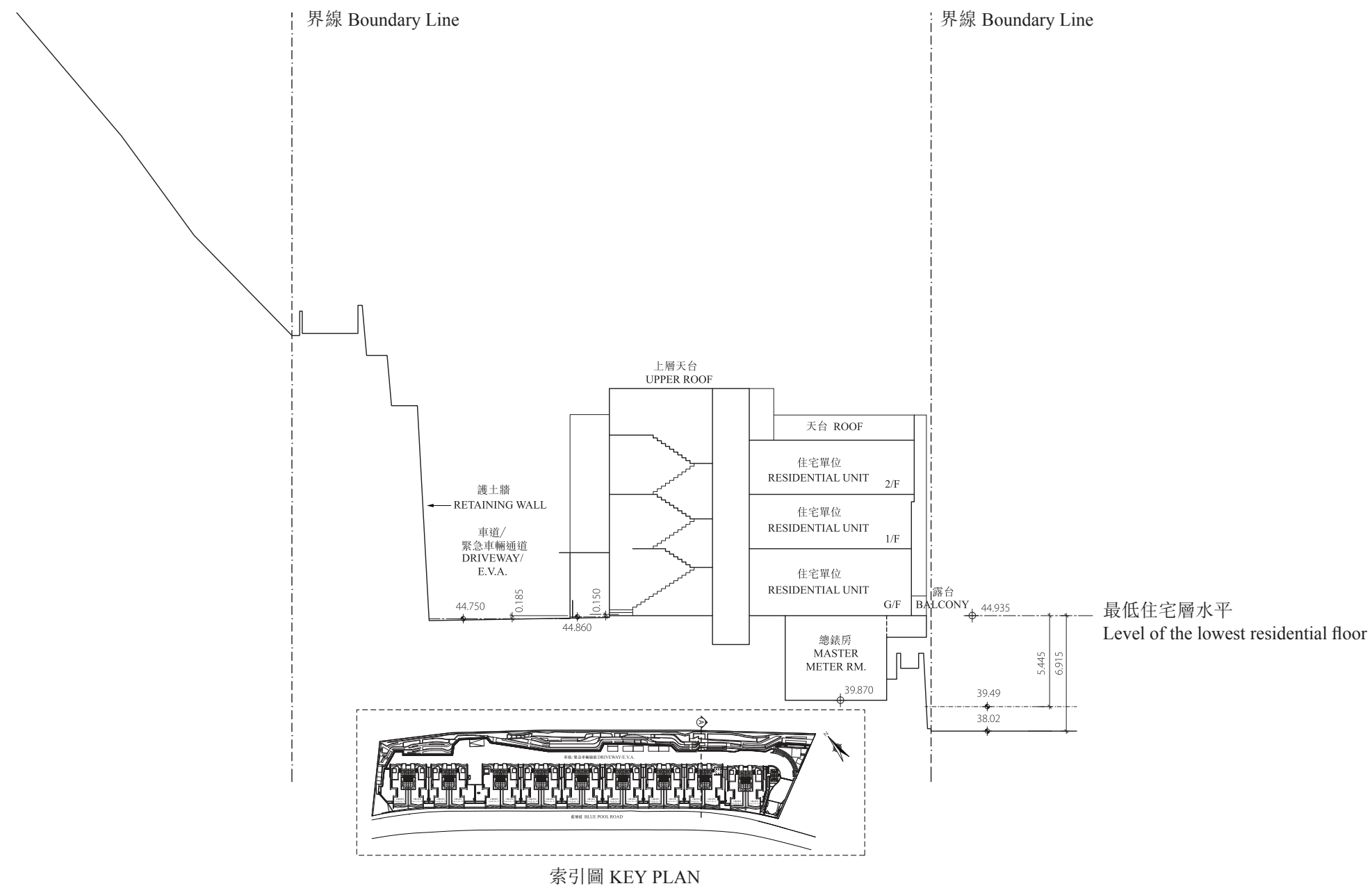
1. 毗連建築物的一段藍塘道為香港主水平基準以上 35.82 至 37.38 米。
The part of Blue Pool Road adjacent to the building is 35.82 to 37.38 metres above the Hong Kong Principal Datum.
2. 毗連建築物的一段車道/緊急車輛通道為香港主水平基準以上 44.750 米。
The part of Driveway/ Emergency Vehicular Access (E.V.A.) adjacent to the building is 44.750 metres above the Hong Kong Principal Datum.
3. 與香港主水平基準相對的水平以米表示。
The levels in relation to Hong Kong Principal Datum are given in metres.

* 亦稱為 3 號屋
also known as House 3

20 | 發展項目中的建築物的橫截面圖

CROSS-SECTION PLAN OF BUILDING IN THE DEVELOPMENT

藍塘道37號* – 橫截面圖 A-A
No. 37 Blue Pool Road* – Cross-Section Plan A-A



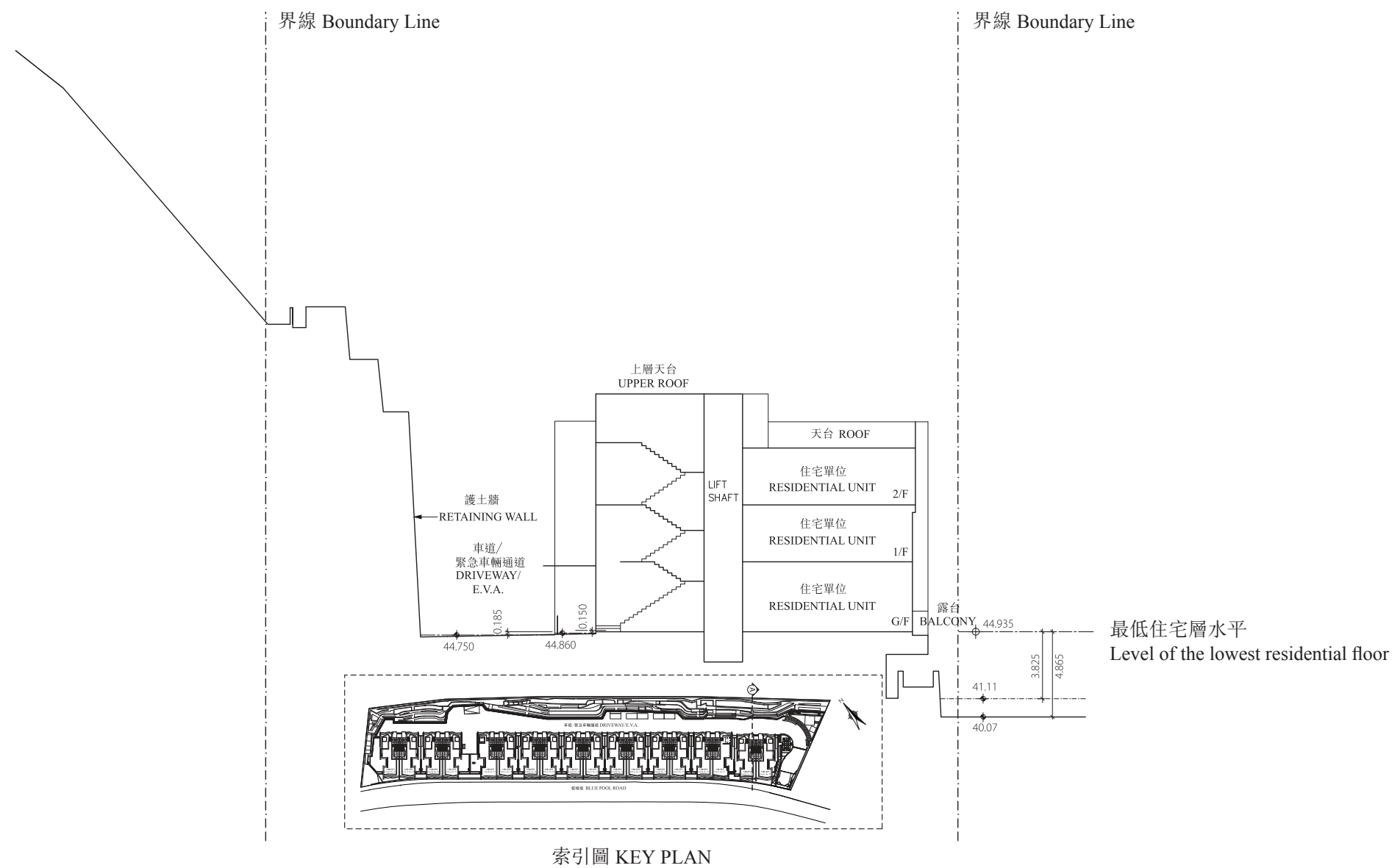
- 毗連建築物的一段藍塘道為香港主水平基準以上 38.02 至 39.49 米。
The part of Blue Pool Road adjacent to the building is 38.02 to 39.49 metres above the Hong Kong Principal Datum.
- 毗連建築物的一段車道/緊急車輛通道為香港主水平基準以上 44.750 米。
The part of Driveway/ Emergency Vehicular Access (E.V.A.) adjacent to the building is 44.750 metres above the Hong Kong Principal Datum.
- 與香港主水平基準相對的水平以米表示。
The levels in relation to Hong Kong Principal Datum are given in metres.

* 亦稱為 2 號屋
also known as House 2

20 | 發展項目中的建築物的橫截面圖

CROSS-SECTION PLAN OF BUILDING IN THE DEVELOPMENT

藍塘道39號* – 橫截面圖 A-A
No. 39 Blue Pool Road* – Cross-Section Plan A-A



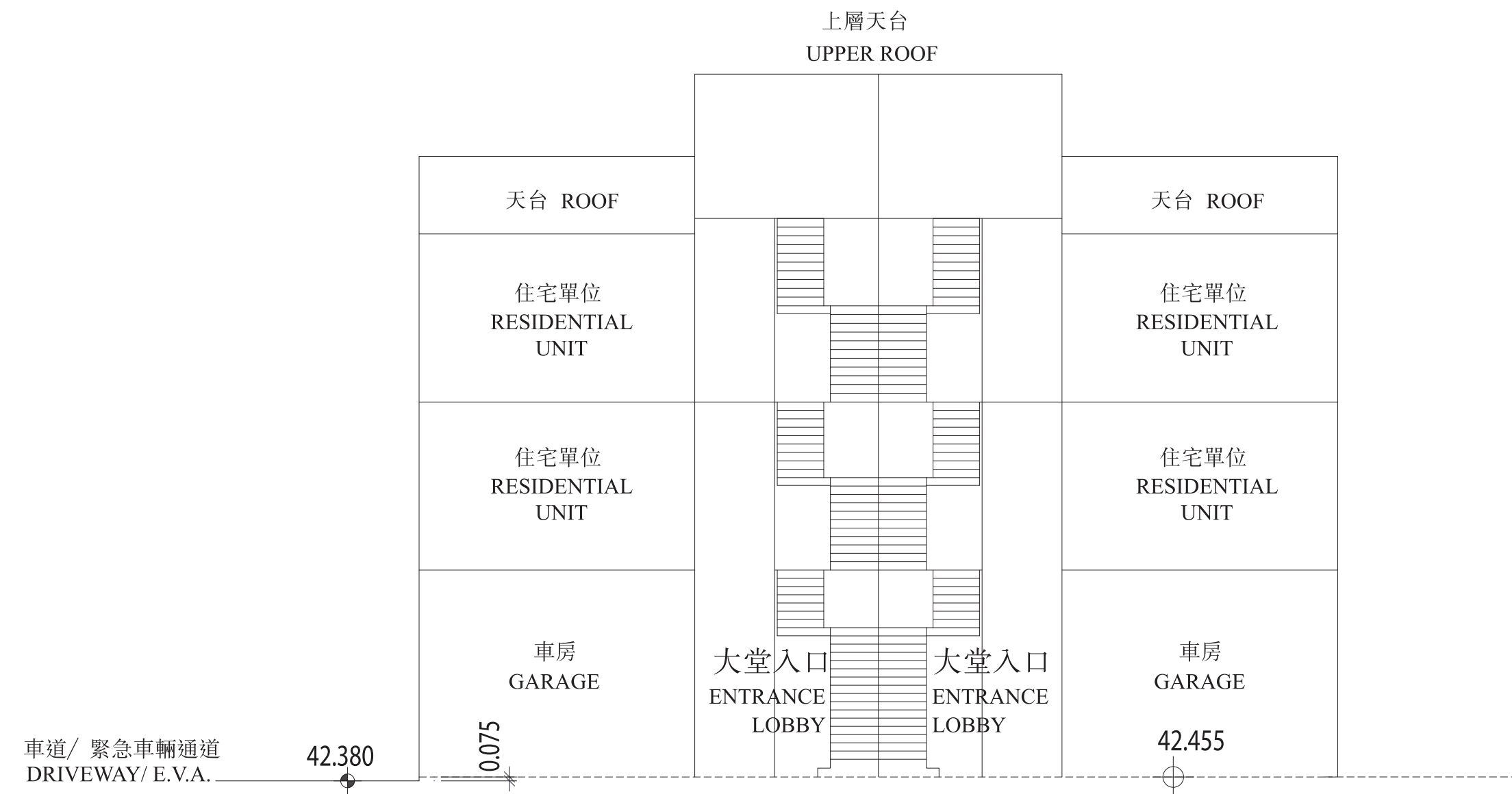
1. 毗連建築物的一段藍塘道為香港主水平基準以上 40.07 至 41.11 米。
The part of Blue Pool Road adjacent to the building is 40.07 to 41.11 metres above the Hong Kong Principal Datum.
2. 毗連建築物的一段車道/緊急車輛通道為香港主水平基準以上 44.750 米。
The part of Driveway/ Emergency Vehicular Access (E.V.A.) adjacent to the building is 44.750 metres above the Hong Kong Principal Datum.
3. 與香港主水平基準相對的水平以米表示。
The levels in relation to Hong Kong Principal Datum are given in metres.

* 亦稱為 1 號屋
also known as House 1

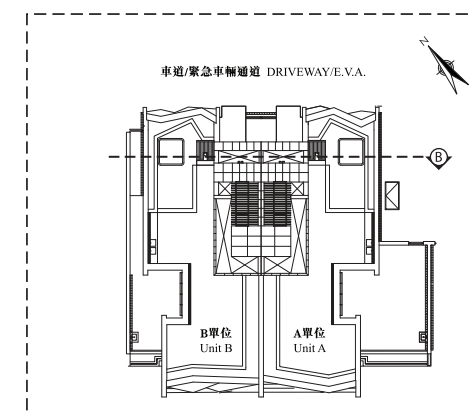
20 | 發展項目中的建築物的橫截面圖

CROSS-SECTION PLAN OF BUILDING IN THE DEVELOPMENT

藍塘道25號* – 橫截面圖 B-B
No. 25 Blue Pool Road* – Cross-Section Plan B-B



索引圖 KEY PLAN



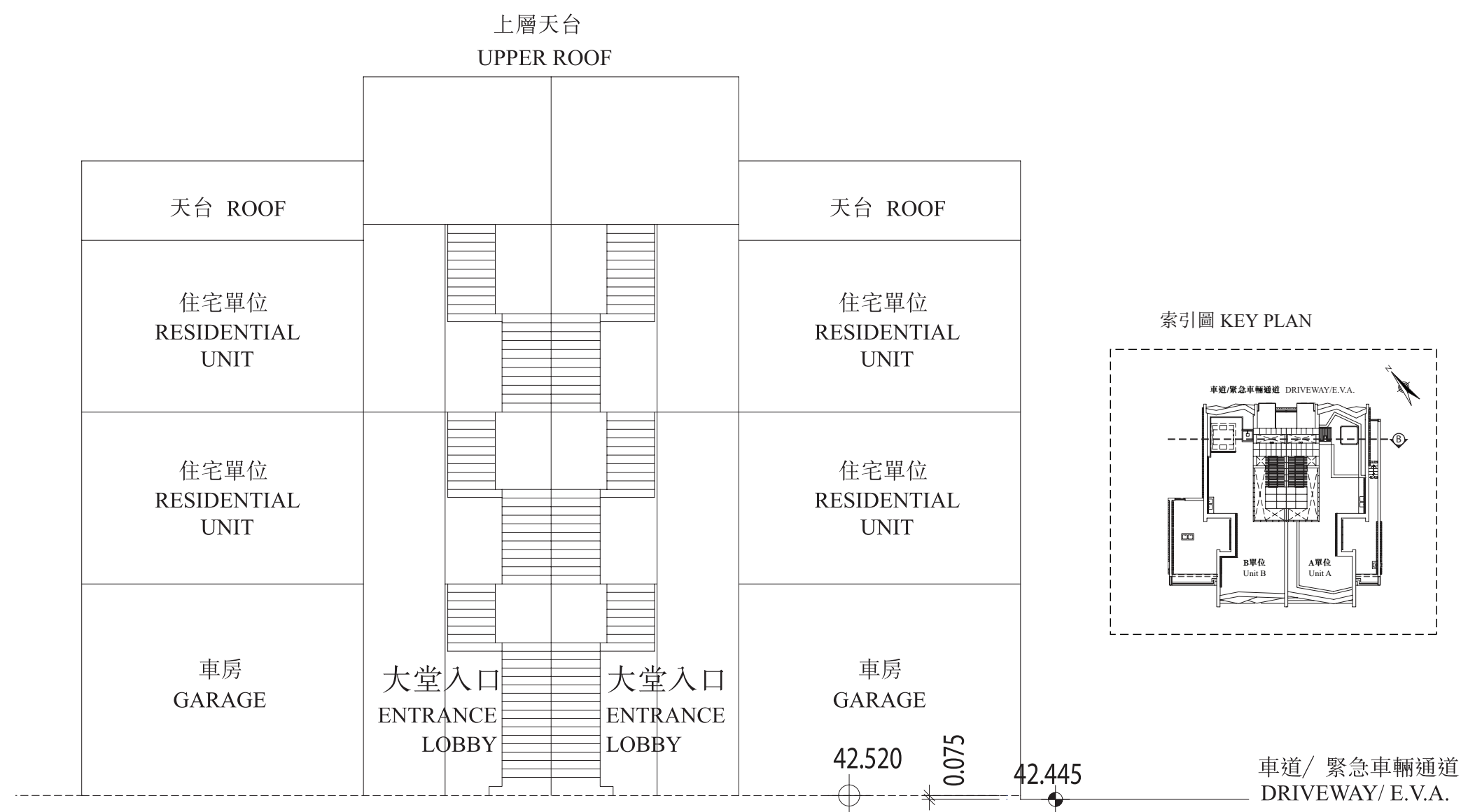
- 毗連建築物的一段車道/緊急車輛通道為香港主水平基準以上 42.380 米。
The part of Driveway/ Emergency Vehicular Access (E.V.A.) adjacent to the building is 42.380 metres above the Hong Kong Principal Datum.
- 虛線為最低住宅樓層水平。
Dotted line denotes the lowest residential floor.
- 與香港主水平基準相對的水平以米表示。
The levels in relation to Hong Kong Principal Datum are given in metres.

* 亦稱為 9 號屋
also known as House 9

20 | 發展項目中的建築物的橫截面圖

CROSS-SECTION PLAN OF BUILDING IN THE DEVELOPMENT

藍塘道27號* – 橫截面圖 B-B
No. 27 Blue Pool Road* – Cross-Section Plan B-B



- 毗連建築物的一段車道/緊急車輛通道為香港主水平基準以上 42.445 米。
The part of Driveway/ Emergency Vehicular Access (E.V.A.) adjacent to the building is 42.445 metres above the Hong Kong Principal Datum.
- 虛線為最低住宅樓層水平。
Dotted line denotes the lowest residential floor.
- 與香港主水平基準相對的水平以米表示。
The levels in relation to Hong Kong Principal Datum are given in metres.

* 亦稱為 8 號屋
also known as House 8