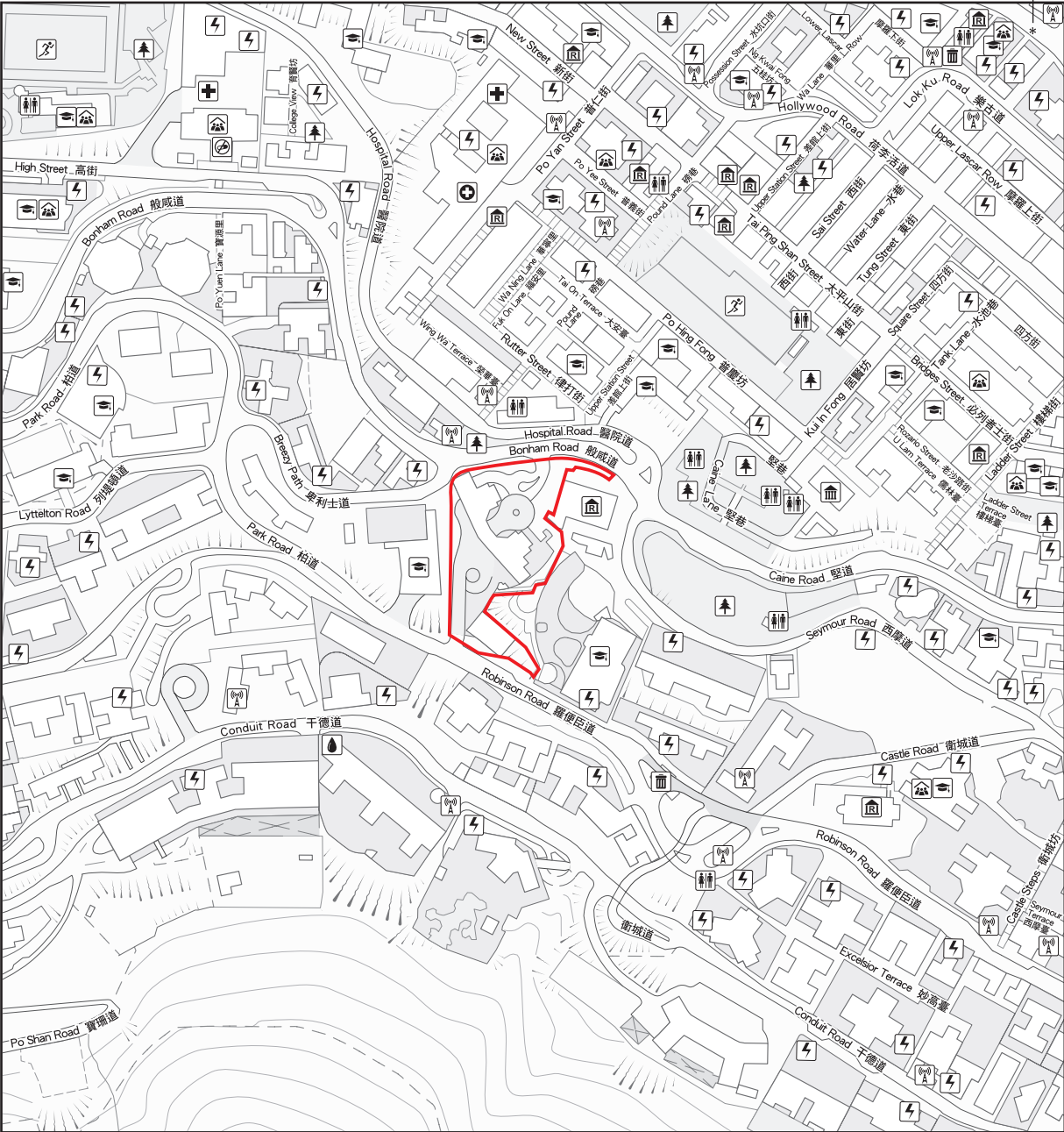
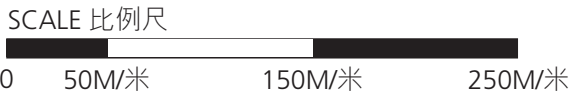


LOCATION PLAN OF THE DEVELOPMENT
發展項目的所在位置圖

*Queen's Road Central 皇后大道中



Boundary Line of the Development
發展項目的邊界



Note 附註:

- Due to technical reasons (such as the shape of the Development), the Location Plan may show more than the area required under the Residential Properties (First-hand Sales) Ordinance.
因技術原因（例如發展項目之形狀），所在位置圖所顯示之範圍可能多於《一手住宅物業銷售條例》所要求者。
- The vendor advises prospective purchasers to conduct an on-site visit for a better understanding of the Development, its surrounding environment and the public facilities nearby.
賣方建議準買家到有關發展項目作實地考察，以對該發展項目、其周邊地區環境及附近的公共設施有較佳了解。

Notation 圖例	
	A museum 博物館
	A power plant (including electricity sub-stations) 發電廠（包括電力分站）
	An addiction treatment centre 戒毒院所
	A clinic 診療所
	A refuse collection point 垃圾收集站
	A hospital 醫院
	A public convenience 公廁
	A public utility installation 公用事業設施裝置
	A religious institution (including a church, a temple and a Tsz Tong) 宗教場所（包括教堂、廟宇及祠堂）
	A school (including a kindergarten) 學校（包括幼稚園）
	Social welfare facilities (including an elderly centre and a home for the mentally disabled) 社會福利設施（包括老人中心及弱智人士護理院）
	Sports facilities (including a sports ground and a swimming pool) 體育設施（包括運動場及游泳池）
	A public park 公園
	An oil depot 油庫

The Location Plan is prepared with reference to the Digital Topographic Map No. T11-SW-A (last updated on 9th October 2024), with adjustment where necessary.
所在位置圖是參考數碼地形圖編號 T11-SW-A（最近更新 2024 年 10 月 9 日）擬備，有需要處經修正處理。
The Map is provided by the CSDI Portal and intellectual property rights are owned by the Government of the HKSAR.
地圖由空間數據共享平台提供，香港特別行政區政府為知識產權擁有人。