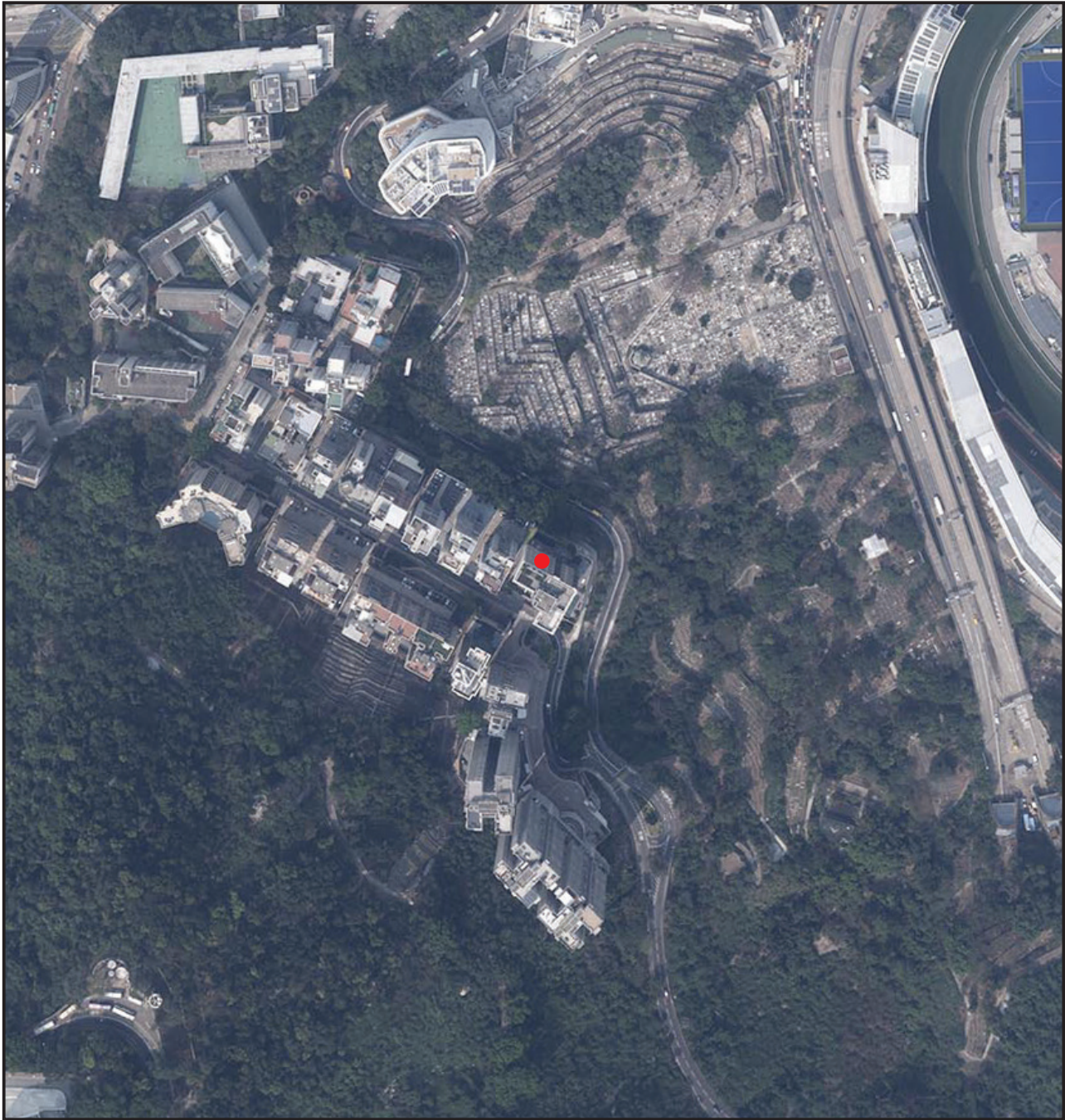


發展項目的鳥瞰照片

AERIAL PHOTOGRAPH OF THE DEVELOPMENT



● 發展項目的位置 Location of the Development

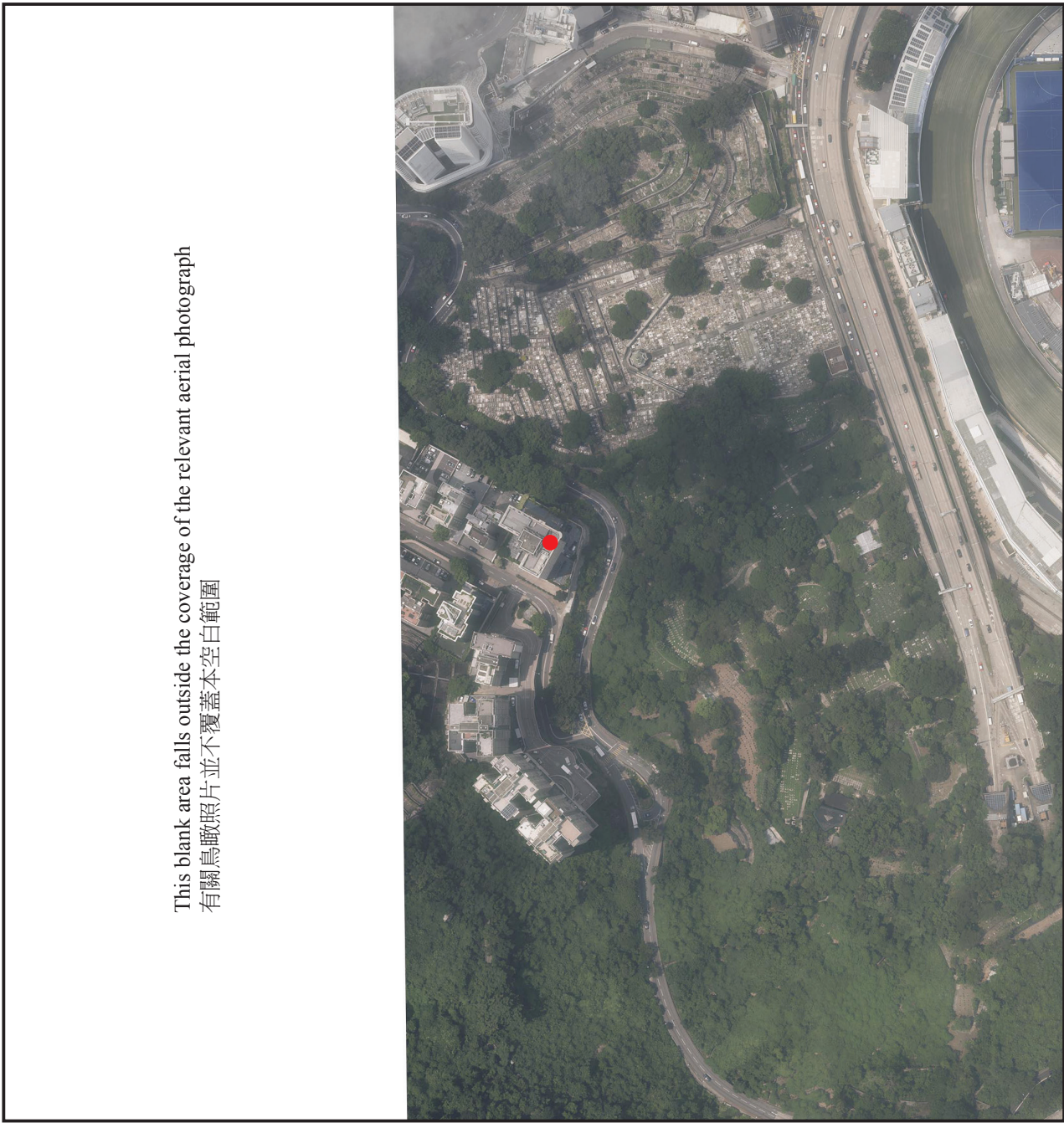
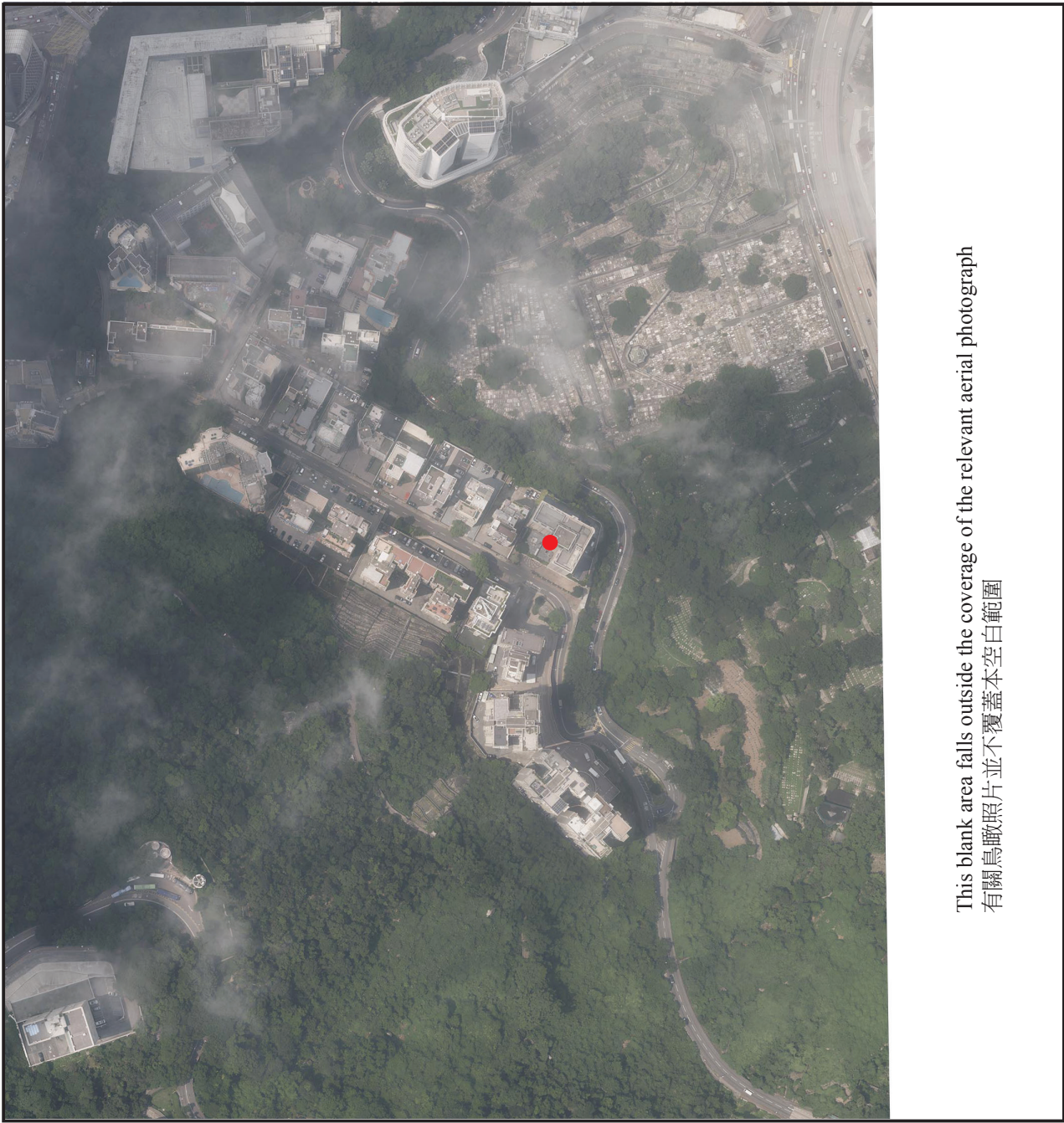
The Aerial Photograph is adopted from part of aerial photograph taken by the Survey and Mapping Office of Lands Department at a flying height of 6,000 feet, photo reference number E219062C dated 08/03/2024.
鳥瞰照片摘錄自於地政總署測繪處於2024年3月8日在6,000呎飛行高度拍攝之鳥瞰照片，編號為E219062C。

Survey and Mapping Office, Lands Department, The Government of HKSAR© Copyright reserved – reproduction by permission only
香港特別行政區政府地政總署測繪處版權所有，未經許可，不得複製。

Explanatory remark:-
The Aerial Photograph may show more than the area required under the Residential Properties (First-hand Sales) Ordinance (Cap.621) due to technical reason that the boundary of the Development is irregular.
備註：
由於發展項目的邊界不規則的技術原因，鳥瞰照片可能顯示多於《一手住宅物業銷售條例》（第621章）所要求顯示的範圍。

發展項目的鳥瞰照片

AERIAL PHOTOGRAPH OF THE DEVELOPMENT



● 發展項目的位置 Location of the Development

● 發展項目的位置 Location of the Development

The Aerial Photograph is adopted from part of aerial photograph taken by the Survey and Mapping Office of Lands Department at a flying height of 6,000 feet, photo reference number E226621C dated 07/08/2024.
鳥瞰照片摘錄自於地政總署測繪處於2024年8月7日在6,000呎飛行高度拍攝之鳥瞰照片，編號為E226621C。

The Aerial Photograph is adopted from part of aerial photograph taken by the Survey and Mapping Office of Lands Department at a flying height of 6,000 feet, photo reference number E226619C dated 07/08/2024.
鳥瞰照片摘錄自於地政總署測繪處於2024年8月7日在6,000呎飛行高度拍攝之鳥瞰照片，編號為E226619C。

Survey and Mapping Office, Lands Department, The Government of HKSAR© Copyright reserved – reproduction by permission only
香港特別行政區政府地政總署測繪處版權所有，未經許可，不得複製。

Explanatory remark:-
The Aerial Photograph may show more than the area required under the Residential Properties (First-hand Sales) Ordinance (Cap.621) due to technical reason that the boundary of the Development is irregular.
備註：
由於發展項目的邊界不規則的技術原因，鳥瞰照片可能顯示多於《一手住宅物業銷售條例》(第621章)所要求顯示的範圍。