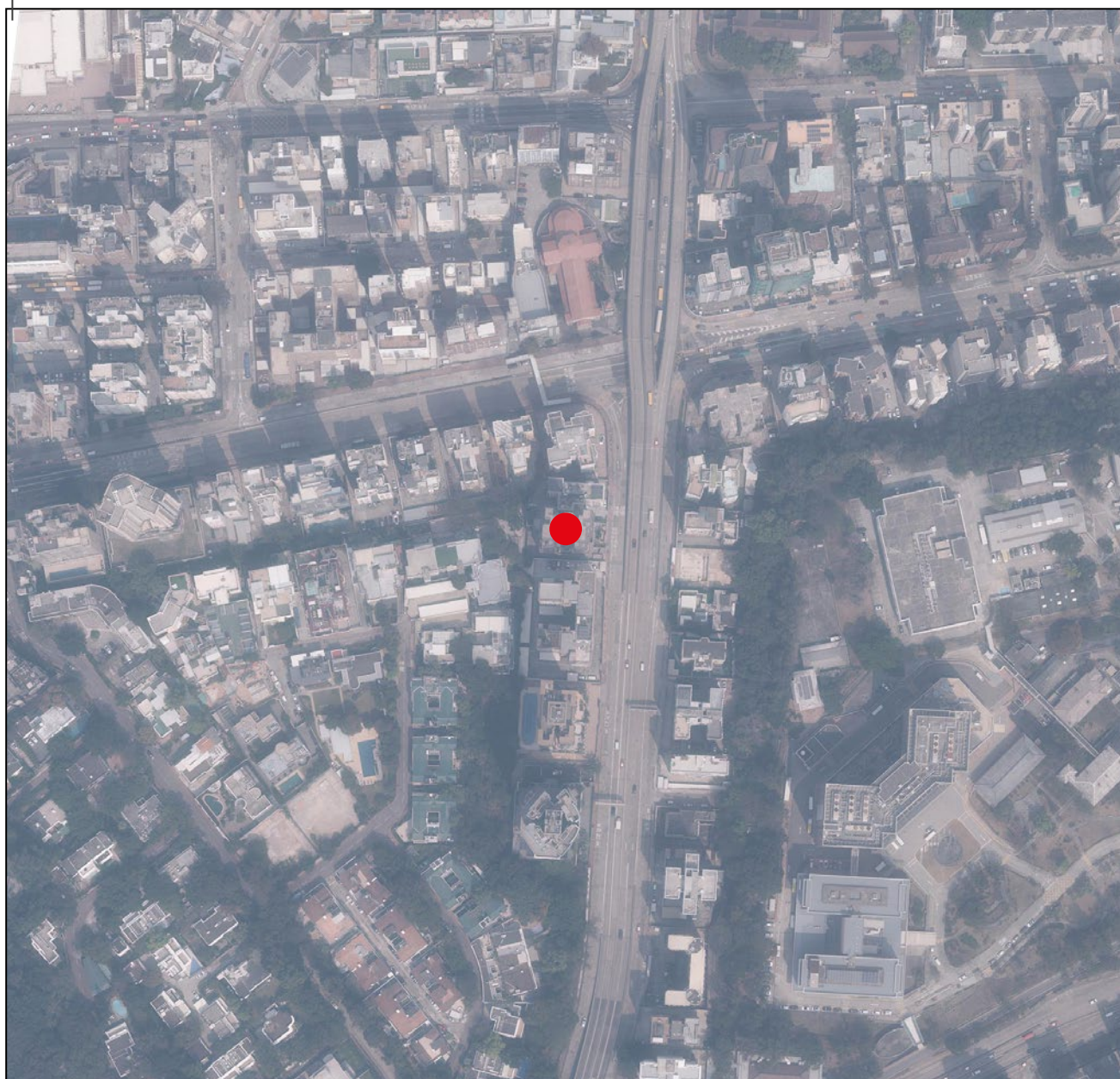


8

發展項目的鳥瞰照片

AERIAL PHOTOGRAPH OF THE DEVELOPMENT

This blank area falls outside the coverage of the aerial photograph and exceeds 250 meters from the boundary of the Development
鳥瞰照片並不覆蓋本空白範圍及超出發展項目邊界250米外



● 發展項目的位置
Location of the Development

香港特別行政區政府地政總署測繪處版權所有，未經許可，不得複製。

Survey and Mapping Office, Lands Department, The Government of HKSAR © Copyright reserved - reproduction by permission only.

摘錄自地政總署測繪處在6,900呎的飛行高度拍攝之鳥瞰照片，照片編號E196135C，飛行日期：2023年3月2日。

Adopted from part of the aerial photograph taken by the Survey and Mapping Office of the Lands Department at a flying height of 6,900 feet, Photo No. E196135C, date of flight: 2 March 2023.

備註：

1. 發展項目的鳥瞰照片的副本可於開放時間內向售樓處免費查閱。
2. 賣方亦建議買方到該發展地盤作實地考察，以獲取對該發展地盤、以及周邊地區環境及附近的公共設施有較佳了解。
3. 因技術原因(例如發展項目之形狀)，鳥瞰照片所顯示之範圍多於《一手住宅物業銷售條例》所要求顯示的範圍。

Notes:

1. Copy of the aerial photograph of the Development is available for free inspection at the sales office(s) during opening hours.
2. The Vendor also advises purchasers to conduct on-site visit for a better understanding of the development site, its surrounding environment and the public facilities nearby.
3. Due to technical reasons (such as the shape of the Development), the aerial photographs has shown area more than that required under the Residential Properties (First-hand Sales) Ordinance.