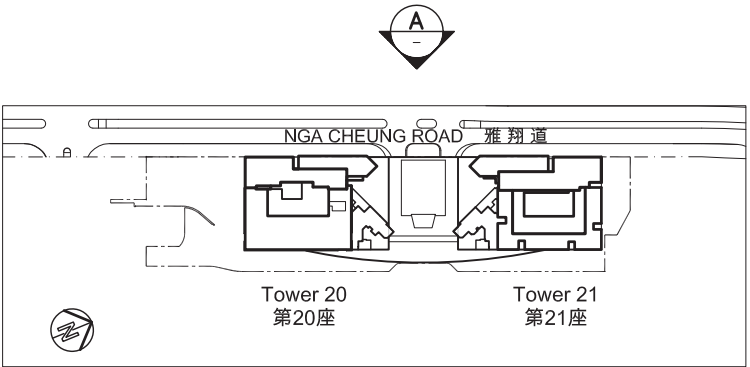
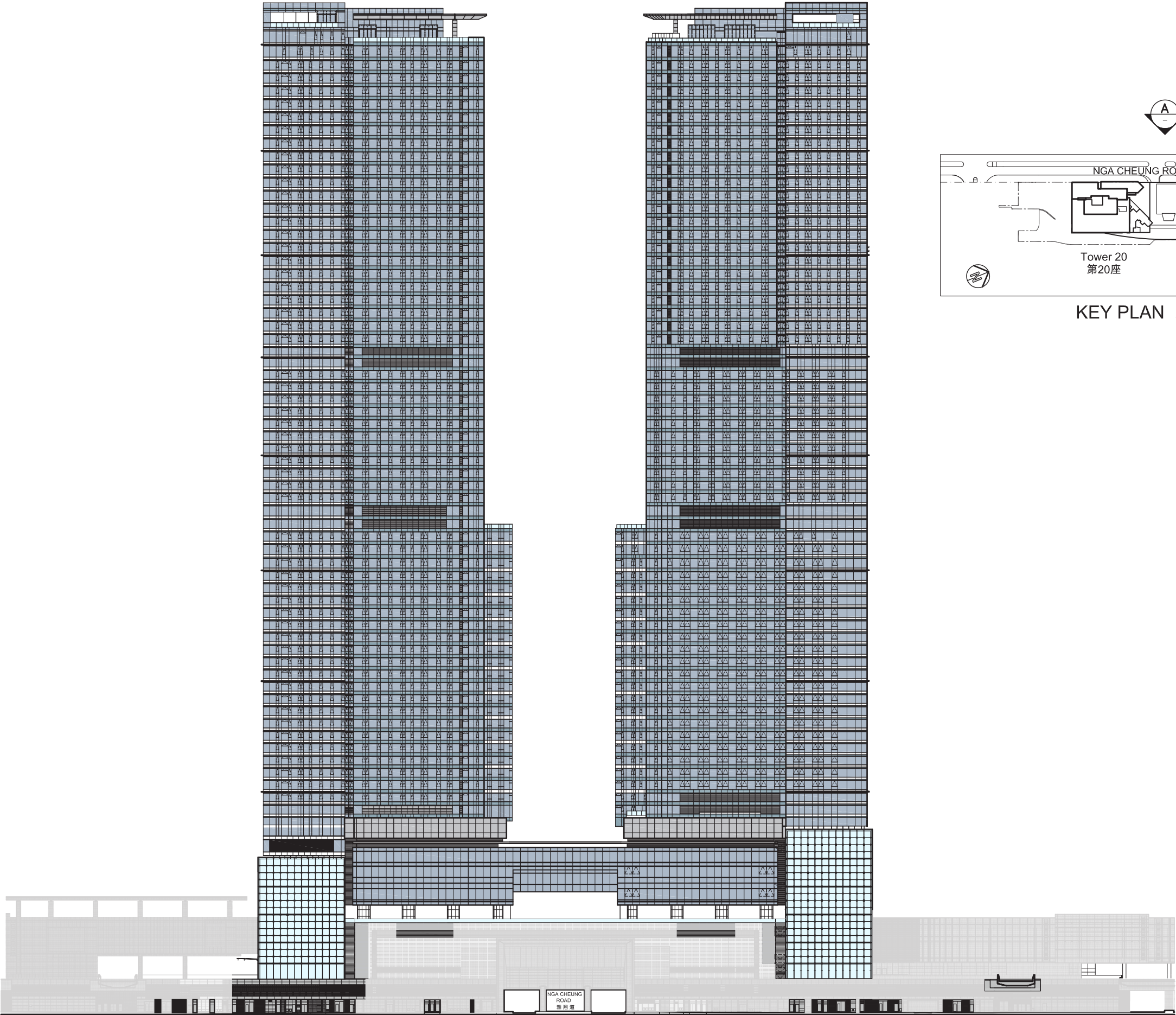


Elevation plan
立面圖

Tower 21 第21座

Tower 20 第20座



KEY PLAN 索引圖

Authorized person for the Phase has certified that the elevations shown on this plan:-

- (a) are prepared on the basis of the approved building plans for the Phase as of 15 March 2007;
- (b) are in general accordance with the outward appearance of the Phase.

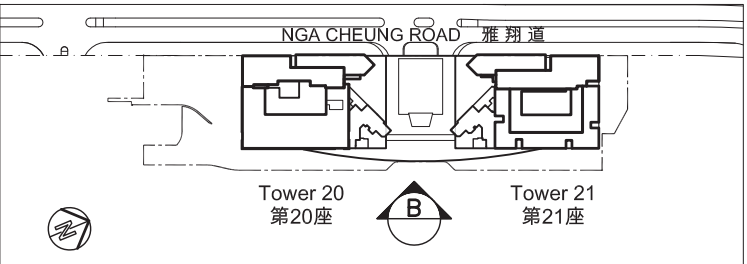
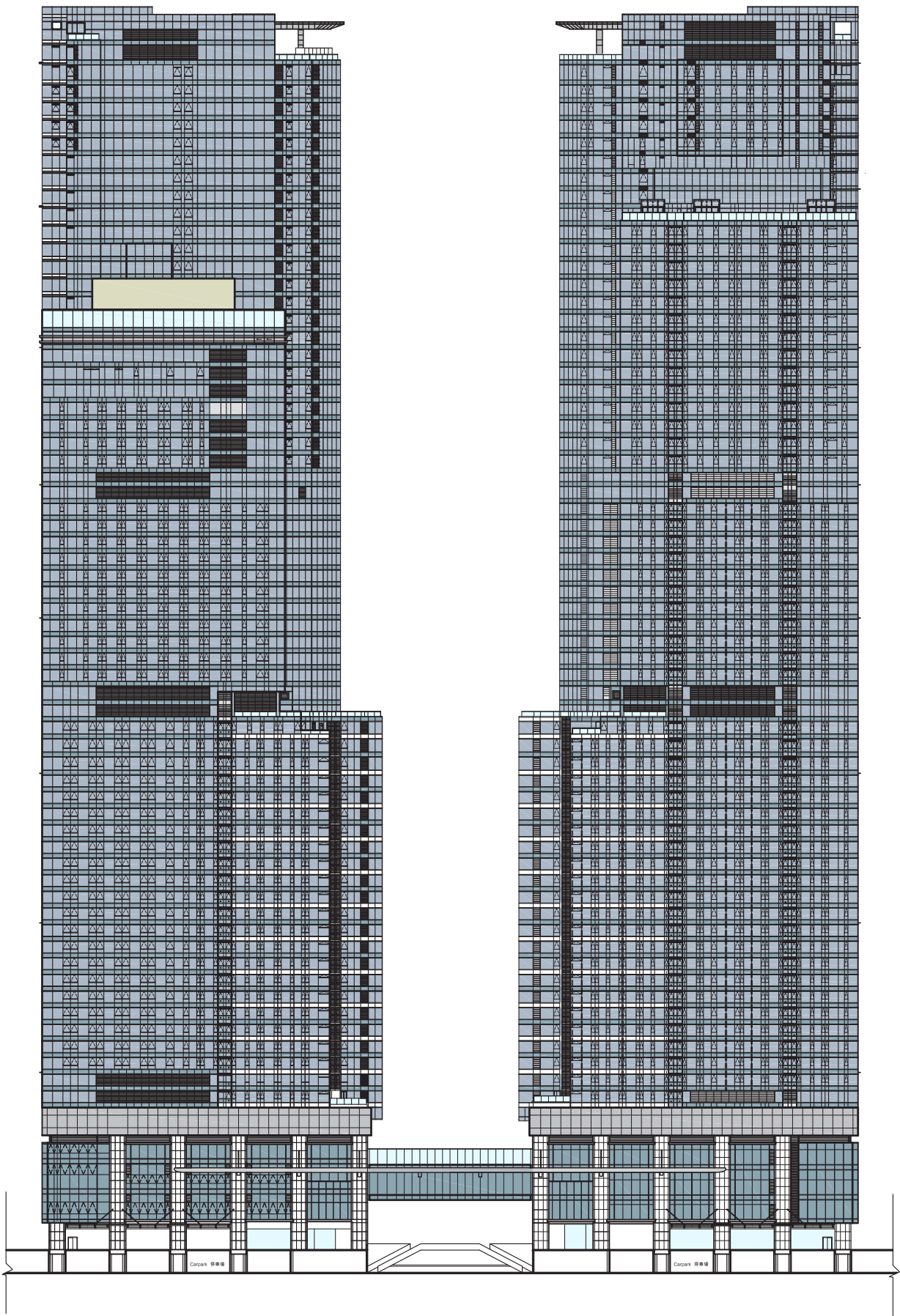
期數的認可人士已證明本圖顯示的立面：

- (a) 以2007年3月15日的情況為準的期數的經批准的建築圖則為基礎擬備；
- (b) 大致上與期數的外觀一致。

Elevation plan
立面圖

Tower 20 第20座

Tower 21 第21座



KEY PLAN 索引圖

Authorized person for the Phase has certified that the elevations shown on this plan:-

- (a) are prepared on the basis of the approved building plans for the Phase as of 15 March 2007;
- (b) are in general accordance with the outward appearance of the Phase.

期數的認可人士已證明本圖顯示的立面：

- (a) 以2007年3月15日的情況為準的期數的經批准的建築圖則為基礎擬備；
- (b) 大致上與期數的外觀一致。

B Elevation 立面圖

Elevation plan
立面圖

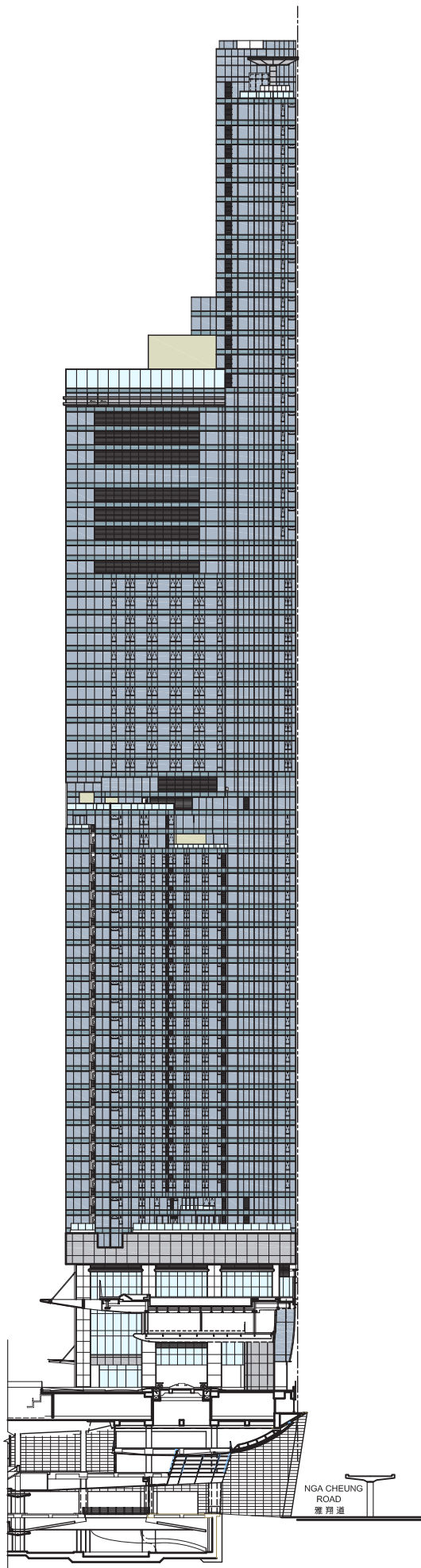
Authorized person for the Phase has certified that the elevations shown on this plan:-

- (a) are prepared on the basis of the approved building plans for the Phase as of 15 March 2007;
- (b) are in general accordance with the outward appearance of the Phase.

期數的認可人士已證明本圖顯示的立面：

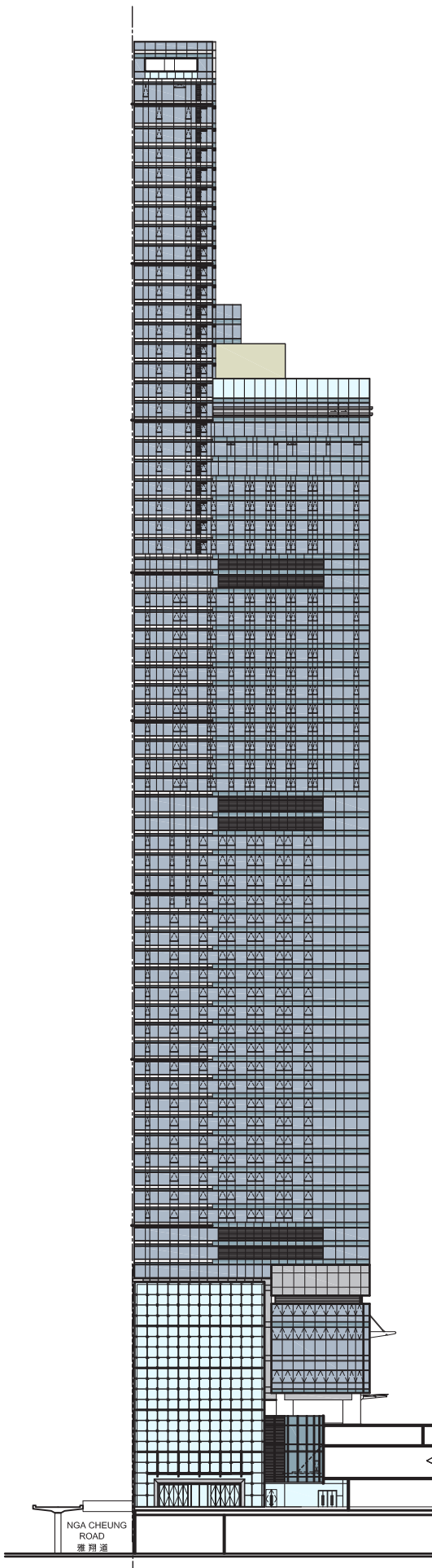
- (a) 以2007年3月15日的情況為準的期數的經批准的建築圖則為基礎擬備；
- (b) 大致上與期數的外觀一致。

Tower 20 第20座

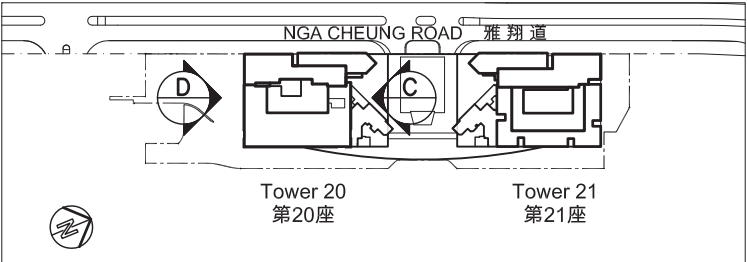


C Elevation 立面圖

Tower 20 第20座



D Elevation 立面圖



KEY PLAN 索引圖

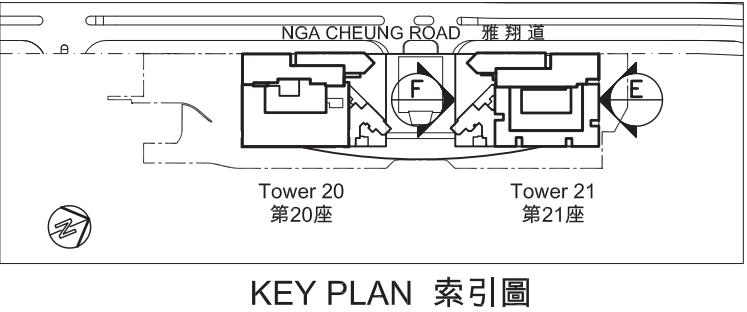
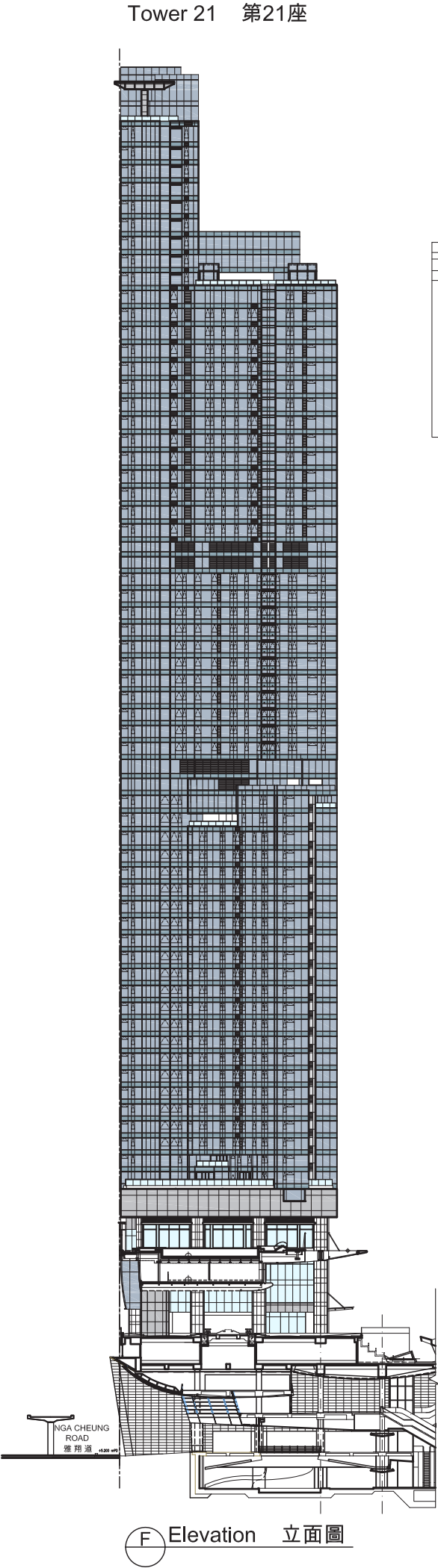
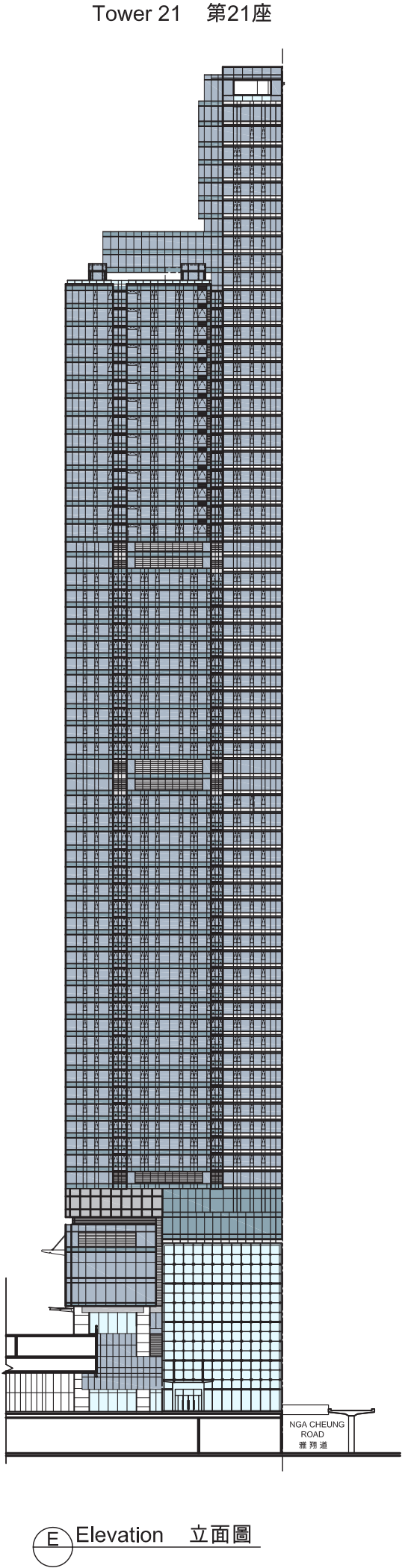
Elevation plan
立面圖

Authorized person for the Phase has certified that the elevations shown on this plan:-

- (a) are prepared on the basis of the approved building plans for the Phase as of 30 November 2007;
- (b) are in general accordance with the outward appearance of the Phase.

期數的認可人士已證明本圖顯示的立面：

- (a) 以2007年11月30日的情況為準的期數的經批准的建築圖則為基礎擬備；
- (b) 大致上與期數的外觀一致。



Information on common facilities in the Phase
期數中的公用設施的資料

		Area 面積		Total Area 總面積	
		square metre 平方米	square feet 平方呎	square metre 平方米	square feet 平方呎
Resident's clubhouse (including any recreational facilities for residents' use) 住客會所 (包括供住客使用的任何康樂設施)	Covered 有上蓋遮蓋	4681.991	50397	5750.046	61894
	Uncovered 無上蓋遮蓋	1068.055	11497		
Communal garden or play area for residents' use on the roof, or on any floor between the roof and the lowest residential floor, of a building in the Phase (whether known as a communal sky garden or otherwise) 位於期數中的建築物的天台或在天台和最低一層住宅樓層之間的任何一層的、供住客使用的公用花園或遊樂地方 (不論是稱為公用空中花園或有其他名稱)	Covered 有上蓋遮蓋	2701.928	29084	2701.928	29084
	Uncovered 無上蓋遮蓋	-	-		
Communal garden or play area for residents' use below the lowest residential floor of a building in the Phase (whether known as a covered and landscaped play area or otherwise) 位於期數中的建築物的最低一層住宅樓層以下的、供住客使用的公用花園或遊樂地方 (不論是稱為有蓋及園景的遊樂場或有其他名稱)	Covered 有上蓋遮蓋	-	-	-	-
	Uncovered 無上蓋遮蓋	-	-		

Remarks 備註：

Area in square metres are converted into square feet at a rate of 1 square metre = 10.764 square feet and rounded off to the nearest integer.

以平方米列出的面積以1平方米＝10.764 平方呎換算至平方呎，並四捨五入至整數。



Inspection of plans and deed of mutual covenant

閱覽圖則及公契

1. A copy of the outline zoning plan relating to the Development is available at www.ozp.tpb.gov.hk.
2. (a) A copy of the following is available for inspection at the place at which the residential property of the Phase is offered to be sold - every deed of mutual covenant in respect of the residential property that has been executed.
(b) The inspection is free of charge.

1. 備有關乎本發展項目的分區計劃大綱圖的文本供閱覽的互聯網網站的網址為 www.ozp.tpb.gov.hk。
2. (a) 以下文件的文本存放在期數的住宅物業的售樓處，以供閱覽－住宅物業每一已簽立的公契。
(b) 無須為閱覽付費。

Fittings, finishes and appliances

裝置、裝修物料及設備

Item	Description
1. Exterior Finishes	
a. External Wall	Tower facade is finished with aluminum claddings, glass louvers, ceramic tiles and curtain wall system.
	Podium facade is finished with crystallized white stone claddings, aluminum claddings, aluminum louvers and curtain wall system.
b. Window	Windows and curtain walls are made up of fluorocarbon-coated aluminum frame with tinted glass.
c. Bay Window	Nil
d. Planter	Planters at Lobby Floor and flat roofs of the following units are finished with natural stone on the external surface: Tower 20 : Flat B of 37/F and Flat C of 38/F of Zone 2 ; Tower 21 : Flat A of 82/F and Flat B of 91/F of Zone 1 ; Tower 21 : Flat A of 81/F, Flat B of 81/F and Flat D of 81/F of Zone 3 ; Tower 21 : Flat A of 12/F, Flat B of 12/F, Flat B of 37/F and Flat C of 38/F of Zone 6. Planters at flat roofs of the following units are finished with stainless steel: Tower 20 : Flat A of 91/F and Flat C of 91/F of Zone 1 ; Tower 20 : Flat D of 91/F of Zone 1 ; Tower 20 : Flat A and Flat B of 12/F of Zone 2 ; Tower 21 : Flat A of 91/F of Zone 1. Planters at flat roof of the following unit is finished with stainless steel and washed granolithic finish: Tower 21 : Flat C of 80/F of Zone 3. Planters at flat roof of the following unit is finished with stainless steel and natural stone: Tower 21 : Flat C of 91/F of Zone 1.
e. Verandah or balcony	Nil
f. Drying facilities for clothing	Nil

2. Interior Finishes		
a. Lobby	Podium Shuttle Lift Lobby	The floor is finished with natural stone. The walls are finished with natural stone, featured glass, mirror and stainless steel feature panels. The false ceiling is finished with gypsum board.
	Tower Main Entrance Lobby	The floor is finished with natural stone. The walls are finished with natural stone, featured glass, mirror and stainless steel feature panels. The false ceiling is finished with gypsum board.
	Typical Lift Lobby	The floor is finished with natural stone. The walls are finished with natural stone, featured glass and mirror. The false ceiling is finished with gypsum board.
b. Internal Wall and Ceiling	The internal walls of living room, dining room and bedroom are finished with emulsion paint ; The ceiling of living room, dining room and bedroom is finished with emulsion paint and partly finished with gypsum board false ceiling except the following units : For Flat A of 67/F - 85/F of Zone 1 of Tower 20: The internal walls of living room, dining room and bedrooms are finished with emulsion paint, except that there are no wall finishes for the glass wall at Bedroom 1; The ceiling of living room, dining room and bedroom is finished with emulsion paint and partly finished with gypsum board false ceiling. For Flat A of 86/F of Zone 1 of Tower 20 : The internal walls of living room and dining room are finished with wall coverings and partly finished with mirror finishes; The internal walls of all bedrooms are finished with wall coverings, except that there are no wall finishes for the glass wall at Bedroom 1; The ceiling of living room, dining room and bedroom is finished with emulsion paint and partly finished with gypsum board false ceiling. For Flat A of 87/F, Flat A of 88/F and Flat A of 89/F of Zone 1 of Tower 20 : The internal walls of living room and dining room are finished with emulsion paint and partly finished with timber veneer; The internal walls of all bedrooms are finished with emulsion paint; The ceiling of living room, dining room and bedroom is finished with emulsion paint and partly finished with timber and gypsum board false ceiling. For Flat A of 90/F of Zone 1 of Tower 20 : The internal walls of living room and dining room are finished with wall coverings and partly finished with timber veneer and mirror finishes, the ceiling of living room and dining room is finished with emulsion paint and partly finished with timber, stainless steel and gypsum board ceiling; The internal walls of all bedrooms are finished with wall coverings, the ceiling of all bedrooms are finished with emulsion paint and partly finished with gypsum board false ceiling.	

Item	Description
	For Flat A of 91/F of Zone 1 of Tower 20 : The internal walls of living room and dining room are finished with emulsion paint and partly finished with metal, timber veneer and natural stone, the ceiling of living room and dining room is finished with emulsion paint and partly finished with gypsum board false ceiling; The internal walls of all bedrooms (except bedroom 4) are finished with emulsion paint and partly finished with timber veneer, the ceiling of all bedrooms are finished with emulsion paint and partly finished with gypsum board false ceiling. The internal walls of bedroom 4 are finished with emulsion paint and partly installed with glass wall. For Flat C of 91/F of Zone 1 of Tower 20 : The internal walls of living room and dining room are finished with emulsion paint and partly finished with timber veneer and natural stone, the ceiling of living room and dining room is finished with emulsion paint and partly finished with gypsum board false ceiling; The internal walls of all bedrooms are finished with emulsion paint and partly finished with timber veneer, the ceiling of all bedrooms are finished with emulsion paint and partly finished with gypsum board false ceiling. For Flat D of 91/F of Zone 1 of Tower 20: The internal walls of living room and dining room are finished with wallpaper, natural stone, wood veneer, mirror, artificial leather, stainless steel frame and glass panel; The internal walls of bedroom 2 are finished with mirror, wood veneer, fabric cushion and artificial leather; The internal walls of bedroom 3 are finished with natural stone, mirror, wood veneer, cushion and mirror with metal frame; The internal walls of bedroom 4 are finished with wallpaper, natural stone, stainless steel frame and acrylic material; The false ceiling of living room and dining room is finished with gypsum board with emulsion paint and metal grid; The false ceiling of bedrooms 2, 3 and 4 are finished with gypsum board with emulsion paint. For Flat C of 79/F of Zone 3 of Tower 21: The internal walls of living room and dining room are finished with wallpaper, natural stone, artificial leather, mirror, stainless steel frame, glass panel and mosaic tile with glass cover; The internal walls of bedroom 1 are finished with wallpaper, artificial leather panel with stainless steel frame, mirror and wood veneer; The internal walls of bedroom 2 are finished with wallpaper, artificial leather panel with stainless steel frame, mirror, wood veneer and mosaic tiles with stainless steel frame; The internal walls of bedroom 4 are finished with wallpaper, glass partition wall with stainless steel frame, stainless steel panel, mirror and wood veneer; The false ceiling of living room, dining room, bedrooms 1, 2 and 4 are finished with gypsum board with emulsion paint. For Flat C of 80/F of Zone 3 of Tower 21: The internal walls of living room and dining room are finished with emulsion paint, wallpaper, natural stone, glass panel wall with stainless steel frame, mirror and wood veneer; The internal walls of bedroom 1 is finished with paint, natural stone, wood veneer, artificial leather, glass panel wall with stainless steel frame and stainless steel; The internal walls of bedroom 2 are finished with wallpaper, mirror and wood veneer; The internal walls of bedroom 3 are finished with wallpaper, mirror, wood veneer and artificial leather; The internal walls of bedroom 4 are finished with wallpaper, glass panel and wood veneer; The internal walls of bedroom 5 are finished with wallpaper, cushion, mirror, wood veneer and fabric; The false ceiling of living room and dining room are finished with wallpaper and gypsum board with emulsion paint; The false ceiling of bedroom 1 is finished with tinted mirror; The false ceiling of bedrooms 2, 3 and 4 are finished with gypsum board with emulsion paint; The false ceiling of bedroom 5 is finished with mirror and gypsum board with emulsion paint. For Flat A of 90/F of Zone 1 of Tower 21: The internal walls of living room and dining room are finished with stainless steel, mirror, wood veneer and glass panel wall; The internal walls of bedroom 1 are finished with wallpaper, mirror and glass panel wall with stainless steel frame; The internal walls of bedroom 2 are finished with wallpaper, mirror and artificial leather; The internal walls of bedroom 3 are finished with mirror, stainless steel frame, wood veneer, artificial leather and glass; The internal walls of bedroom 4 are finished with wallpaper, glass panel, mirror and wood veneer; The false ceiling of living room and dining room are finished with wood panel and gypsum board with emulsion paint; The false ceiling of bedrooms 1, 2, 3 and 4 are finished with gypsum board with emulsion paint. For Flat A of 91/F of Zone 1 of Tower 21: The internal walls of living room and dining room are finished with wallpaper with stainless steel grid, natural stone, metal panel and wood veneer; The internal walls of bedroom 2 are finished with natural stone, fabric and wood veneer; The internal walls of bedroom 3 are finished with natural stone, wood veneer, artificial leather and stainless steel plate; The internal walls of bedroom 4 are finished with natural stone, wood veneer, fabric and stainless steel; The false ceiling of living room, dining room, bedrooms 2, 3 and 4 are finished with gypsum board with emulsion paint. For Flat C of 91/F of Zone 1 of Tower 21: The internal walls of living room and dining room are finished with natural stone, wood veneer with high gloss lacquered finish, mirror, fabric cushion and gypsum moulding; The internal walls of bedroom 1 are finished with wood veneer with high gloss lacquered finish, mirror, fabric cushion and gypsum moulding; The internal walls of bedroom 2 are finished with wallpaper, wood veneer with high gloss lacquered finish, mirror, artificial leather and gypsum moulding; The internal walls of bedroom 3 are finished with wallpaper, fabric cushion, mirror, wood veneer with high gloss lacquered finish and gypsum moulding; The internal walls of bedroom 4 are finished with natural stone, cushion, mirror, wood veneer with high gloss lacquered finish, fabric cushion with stainless steel grid; The false ceiling of living room and dining room are finished with gypsum board with emulsion paint and mirror border; The false ceiling of bedroom 1 is finished with gypsum board with emulsion paint and mirror border; The false ceiling of bedrooms 2, 3 and 4 are finished with gypsum board with emulsion paint.

Fittings, finishes and appliances

裝置、裝修物料及設備

Item	Description
c. Internal Floor	<p>The internal floor of the living room, dining room and bedroom are finished with engineered timber flooring system with timber skirting except the following units :</p> <p>For all Flat A units of Zone 1 of Tower 20 (except Flat A of 91/F): The internal floor of the living room, dining room and bedroom 1 are finished with natural stone flooring with natural stone skirting; All other bedrooms are finished with engineered timber flooring with timber skirting.</p> <p>For Flat A of 91/F of Zone 1 of Tower 20: The internal floor of the living room and dining room are finished with natural stone flooring system with natural stone skirting, stainless steel skirting; The internal floor of all bedrooms are finished with engineered timber flooring with timber skirting.</p> <p>For Flat C of 91/F of Zone 1 of Tower 20: The internal floor of the living room and dining room are finished with natural stone flooring system with natural stone skirting; The internal floor of all bedrooms are finished with engineered timber flooring with timber skirting.</p> <p>For Flat D of 91/F of Zone 1 of Tower 20: The internal floor of living room and dining room are finished with natural stone and stainless steel skirting; The internal floor of bedrooms 2, 3 and 4 are finished with carpet.</p> <p>For Flat A of 12/F of Zone 2 of Tower 20: The internal floor of the living room and dining room are finished with natural stone with natural stone skirting, glass and engineered timber flooring with timber skirting; The internal floor of bedrooms 1, 2, 3 and 4 are finished with engineered timber flooring system with timber skirting.</p> <p>For Flat C of 79/F of Zone 3 of Tower 21: The internal floor of living room and dining room are finished with natural stone and stainless steel skirting; The internal floor of bedrooms 1, 2, and 4 are finished with carpet and stainless steel skirting.</p> <p>For Flat C of 80/F of Zone 3 of Tower 21: The internal floor of living room and dining room are finished with natural stone; The internal floor of bedroom 1 is finished with vinyl sheet and timber skirting; The internal floor of bedroom 2 is finished with carpet and timber skirting; The internal floor of bedrooms 3 and 5 are finished with carpet and timber skirting The internal floor of bedroom 4 is finished with vinyl sheet.</p> <p>For Flat A of 90/F of Zone 1 of Tower 21: The internal floor of living room, dining room and bedroom 1 are finished with natural stone and stainless steel skirting; The internal floor of bedrooms 2 and 4 are finished with engineered timber flooring and stainless steel skirting; The internal floor of bedroom 3 is finished with carpet and stainless steel skirting.</p> <p>For Flat A of 91/F of Zone 1 of Tower 21: The internal floor of living room and dining room are finished with natural stone and engineered timber flooring; The internal floor of bedrooms 2, 3 and 4 are finished with engineered timber flooring.</p> <p>For Flat C of 91/F of Zone 1 of Tower 21: The internal floor of living room and dining room are finished with natural stone with natural stone skirting; The internal floor of bedroom 1 is finished with natural stone with natural stone skirting; The internal floor of bedrooms 2 and 3 are finished with carpet with timber skirting; The internal floor of bedroom 4 is finished with carpet, natural stone with timber skirting in high gloss lacquered finish.</p>
d. Bathroom	<p>The walls of bathroom are finished with natural stone and mirror up to false ceiling level except the following units:</p> <p>For Flat A and Flat C of 91/F of Zone 1 of Tower 20: The wall of bathrooms are finished with timber veneer, metal, natural stone and mirror up to false ceiling level.</p> <p>For Flat D of 91/F of Zone 1 of Tower 20: Bathroom of bedroom 3: The walls of bathroom are finished with natural stone, mirror and wood veneer up to false ceiling level; Bathroom of bedroom 4: The walls of bathroom are finished with natural stone, glass panel and mirror up to false ceiling level; Bathroom of study room and bathroom: The walls of bathroom are finished with natural stone and mirror up to false ceiling level.</p> <p>For Flat C of 79/F of Zone 3 of Tower 21: Bathroom of bedrooms 2 and 4 and bathroom: The walls of bathroom are finished with natural stone and mirror up to false ceiling level.</p>

Item	Description
	<p>For Flat C of 80/F of Zone 3 of Tower 21: Bathroom of bedroom 3: The walls of bathroom are finished with natural stone, mosaic tiles and mirror up to false ceiling level; Bathroom of bedroom 4: The walls of bathroom are finished with natural stone and glass panel up to false ceiling level; Bathroom of bedroom 5: The walls of bathroom are finished with natural stone, glass panel, mirror and wood veneer up to false ceiling level;</p> <p>Bathroom of study room: The walls of bathroom are finished with natural stone, stainless steel panel and mirror up to false ceiling level; Bathroom: The walls of bathroom are finished with natural stone and mirror up to false ceiling level.</p> <p>For Flat A of 90/F of Zone 1 of Tower 21: Bathroom of bedroom 3: The walls of bathroom are finished with natural stone and mirror up to false ceiling level; Bathroom of bedroom 4: The walls of bathroom are finished with natural stone, glass panel with stainless steel frame and mirror up to false ceiling level; Bathroom: The walls of bathroom are finished with natural stone up to false ceiling.</p> <p>For Flat A of 91/F of Zone 1 of Tower 21: Bathroom of bedrooms 3 and 4 and bathroom: The walls of bathroom are finished with natural stone and stainless steel up to false ceiling level; Bathroom of study room: The walls of bathroom are finished with natural stone and glass panel up to false ceiling level.</p> <p>For Flat C of 91/F of Zone 1 of Tower 21: Bathroom, bathroom of bedrooms 3 and 4 (right hand side of bedroom 4) and study room: The walls of bathroom are finished with natural stone up to false ceiling level; Bathroom of bedroom 4 (left hand side of bedroom 4): The walls of bathroom are finished with mirror and natural stone up to false ceiling level.</p> <p>The floor of bathroom is finished with natural stone.</p> <p>The ceiling of bathroom is finished with gypsum board false ceiling except the following units:</p> <p>For Flat A of 91/F of Zone 1 of Tower 20: The ceiling of bathrooms (except bathroom of bedroom 5) are finished with gypsum board false ceiling with emulsion paint. Bathroom of bedroom 5: The ceiling is finished with gypsum board false ceiling with emulsion paint and aluminium false ceiling.</p> <p>For Flat C and Flat D of 91/F of Zone 1 of Tower 20, Flat C of 80/F of Zone 3 (except bathroom of bedrooms 3 and 5) of Tower 21, Flat A of 90/F (except bathroom of bedroom 3), Flat A of 91/F and Flat C of 91/F (except bathroom of bedroom 4 (left hand side of bedroom 4)) of Zone 1 of Tower 21: The ceiling of bathroom is finished with gypsum board false ceiling with emulsion paint.</p> <p>For Flat A of 90/F of Zone 1 of Tower 21: Bathroom of bedroom 3: The ceiling of bathroom is finished with mirror and gypsum board false ceiling with emulsion paint.</p> <p>For Flat C of 79/F of Zone 3 of Tower 21: Bathroom, bathroom of bedrooms 2 and 4: The ceiling of bathroom is finished with gypsum board false ceiling with emulsion paint and aluminium false ceiling.</p> <p>For Flat C of 80/F of Zone 3 of Tower 21: Bathroom of bedroom 3: The ceiling of bathroom is finished with gypsum board false ceiling with emulsion paint and mosaic tiles; Bathroom of bedroom 5: The ceiling of bathroom is finished with steel, gypsum board with emulsion paint.</p> <p>For Flat C of 91/F of Zone 1 of Tower 21: Bathroom of bedroom 4 (left hand side of bedroom 4): The ceiling of bathroom is finished with plastic film light box, stainless steel frame and gypsum board with emulsion paint.</p>
e. Kitchen	<p>The walls of kitchen are finished with white crystallized stone and stainless steel up to false ceiling level except the following units:</p> <p>For Flat A of 91/F of Zone 1 of Tower 20: The walls of kitchen are finished with natural stone, stainless steel panel and timber veneer up to false ceiling level and partly installed with glass wall.</p> <p>For Flat C of 91/F of Zone 1 of Tower 20: The walls of kitchen are finished with natural stone, metal trim, glass and timber veneer up to false ceiling level.</p> <p>For Flat D of 91/F of Zone 1 of Tower 20: The walls of kitchen are finished with natural stone, wood veneer and stainless steel panel up to false ceiling level.</p> <p>For Flat C of 79/F of Zone 3 of Tower 21, Flat C of 91/F of Zone 1 of Tower 21: The walls of kitchen are finished with natural stone and stainless steel panel up to false ceiling level.</p> <p>For Flat C of 80/F of Zone 3 of Tower 21: The walls of kitchen are finished with natural stone, stainless steel panel and glass panel up to false ceiling level.</p> <p>For Flat A of 90/F of Zone 1 of Tower 21: The walls of kitchen are finished with natural stone, stainless steel panel, mirror and wood veneer up to false ceiling level.</p> <p>For Flat A of 91/F of Zone 1 of Tower 21: The walls of kitchen are finished with natural stone, stainless steel panel and wood veneer up to false ceiling level.</p> <p>The floor of kitchen is finished with natural stone.</p> <p>The ceiling of kitchen is finished with metal and gypsum board false ceiling except the following units:</p> <p>For Flat D of 91/F of Zone 1 of Tower 20, Flat C of 80/F of Zone 3 of Tower 21, Flat A of 90/F, Flat A and Flat C of 91/F of Zone 1 of Tower 21: The ceiling of kitchen is finished with gypsum board with emulsion paint.</p> <p>The cooking bench of kitchen is finished with solid surfacing material except the following units: For Flat A and Flat C of 91/F of Zone 1 of Tower 20 The cooking bench of kitchen is finished with reconstituted stone.</p>

Fittings, finishes and appliances

裝置、裝修物料及設備

Item		Description
3. Interior Fittings		
a. Doors	Entrance Door	<p>Solid core timber with wood veneer finish fitted with lockset, door viewer, door stopper and concealed over-head closer except the following units:</p> <p>For Flat A and Flat C of 91/F of Zone1 of Tower 20: Solid core timber entrance door with timber veneer and metal finish, fitted with lockset, door viewer, door stopper and concealed door closer.</p> <p>For Flat D of 91/F of Zone 1 of Tower 20, Flat C of 79/F, Flat C of 80/F of Zone 3 of Tower 21: Solid core timber entrance door with wood veener, fitted with lockset, concealed door closers and door viewer.</p> <p>For Flat C of 91/F of Zone 1 of Tower 21: Solid core timber entrance door with wood veneer, fitted with lockset and concealed door closers.</p>
	Kitchen Door	<p>Solid core timber with wood veneer finish, fitted with metal handle, door stopper, concealed over-head closer and vision glass panel except the following units:</p> <p>For Flat A of 91/F of Zone 1 of Tower 20: Glass door with metal frame, fitted with floor spring.</p> <p>For Flat C of 91/F of Zone 1 of Tower 20: Solid core timber door with timber veneer and metal finish, fitted with handle, door stopper, concealed door closer and vision glass panel.</p> <p>For Flat D of 91/F of Zone 1 of Tower 20: Solid core timber door with stainless steel grid and wood veneer, fitted with door lockset and concealed door closer.</p> <p>For Flat C of 79/F of Zone 3 of Tower 21: Solid core timber door with artificial leather cover, fitted with concealed door closer.</p> <p>For Flat C of 80/F of Zone 3 of Tower 21: Double swing glass door.</p> <p>For Flat A of 90/F of Zone 1 of Tower 21: Solid core timber door with wood veneer, fitted with concealed door closer and door stopper.</p> <p>For Flat A of 91/F of Zone 1 of Tower 21: Solid core timber door with wood veneer, fitted with metal handle, door stopper, self-closing device and glass visual panel.</p> <p>For Flat C of 91/F of Zone 1 of Tower 21: Solid core timber door with wood veneer, fitted with door lockset and concealed door closer.</p>
	Bedroom Door	<p>Hollow core timber door with wood veneer finish fitted with lockset and door stopper except the following units:</p> <p>For all units of Zone 1 of Tower 20 (except Flat A, Flat C and Flat D of 91/F): Solid core timber door with wood veneer finish fitted with metal lockset and door stopper.</p> <p>For all Flat A units of Zone 1 of Tower 20 (except Flat A of 91/F): Bedroom 1: Glass sliding door with metal frame is provided.</p> <p>For Flat A and Flat C of 91/F of Zone 1 of Tower 20: Solid core timber door with wood veneer finish and metal trim, fitted with lockset and door stopper.</p> <p>For Flat A of 91/F of Zone 1 of Tower 20: Bedroom 4: Glass sliding door with metal door frame.</p> <p>For Flat D of 91/F of Zone 1 of Tower 20: Bedroom 2, 3 and 4: wood veneer and metal grid, fitted with door lockset and concealed door closer.</p> <p>For Flat C of 79/F of Zone 3 of Tower 21: Bedrooms 1, 2 and 3: Hollow core timber door with wood veneer, fitted with lockset and door stopper; Exit of bedroom 3: Solid core timber door with mirror, fitted with lockset, concealed door closer and door viewer; Bedroom 4: Glass door with stainless steel frame, fitted with door stopper.</p>

Item	Description	
		<p>For Flat C of 80/F of Zone 3 of Tower 21: Bedrooms 1 and 4: Glass sliding door; Bedrooms 2 and 3: Hollow core timber door with wood veneer, fitted with lockset and door stopper; Bedroom 5: Hollow core timber door with wood veneer, fitted with lockset.</p> <p>For Flat A of 90/F of Zone 1 of Tower 21: Bedroom 1: Glass sliding door with mirror cover; Bedrooms 2, 3 and 4: Hollow core timber door with wood veneer, fitted with lockset and door stopper;</p> <p>For Flat A of 91/F of Zone 1 of Tower 21: Bedrooms 2, 3 and 4: Hollow core timber door with wood veneer, fitted with lockset and door stopper.</p> <p>For Flat C of 91/F of Zone 1 of Tower 21: Bedroom 1: Glass sliding door with timber skirting and stainless steel grid and glass sliding door with timber frame; Bedroom 2: Hollow timber sliding door with wood veneer, fitted with lockset; Bedroom 3: Hollow core timber door with wood veneer,fitted with lockset and door stopper; Bedroom 4: Hollow core timber door with wall cushion panel and wood veneer, fitted with lockset and door stopper.</p>
	Bathroom Door	<p>Hollow core timber door with wood veneer finish, fitted with metal lockset and door stopper except the following units:</p> <p>For all units of Zone 1 of Tower 20 (except Flat A, Flat C and Flat D of 91/F): Solid core timber door with wood veneer finish, fitted with metal lockset and door stopper.</p> <p>For Flat A of 91/F of Zone 1 of Tower 20: Bathroom of bedroom 1 and bathroom of bedroom 5: Solid core timber door with timber veneer and metal trim, fitted with lockset and door stopper. Bathroom and bathroom inside study: Solid core timber door with timber veneer finish and metal trim, fitted with lockset, door stopper and timber veneered louvre.</p> <p>For Flat C of 91/F of Zone 1 of Tower 20: Solid core timber door with timber veneer and metal trim, fitted with lockset, door stopper and timber veneered louvre.</p> <p>For Flat D of 91/F of Zone 1 of Tower 20: Bathroom of bedrooms 3 and 4: Glass door; Bathroom: Hollow core timber door with stainless steel grid and mirror on wood veneer, fitted with door lockset, steel louvre and concealed door closer; Bathroom of study room: Hollow core timber door with stainless steel grid and mirror, fitted with lockset and concealed door closer.</p> <p>For Flat C of 79/F of Zone 3 of Tower 21: Bathroom of bedroom 2: Double swing glass door; Bathroom of bedroom 4: Hollow core timber door with wood veneer, fitted with lockset. Bathroom door is equipped with timber veneered louvre; Bathroom: Hollow core timber door with wood veneer, fitted with lockset. Bathroom door is equipped with timber veneered louvre.</p> <p>For Flat C of 80/F of Zone 3 of Tower 21: Bathroom of bedroom 3: Hollow core timber door with wood veneer, fitted with lockset; Bathroom of bedroom 4: Hollow core timber door with wood veneer, fitted with lockset and door stopper. Bathroom door is equipped with timber veneered louvre; Bathroom of bedroom 5: Hollow core timber sliding door; Bathroom: Hollow core timber door with wood veneer, fitted with lockset. Bathroom door is equipped with timber veneered louvre; Bathroom of study room: Glass sliding door.</p> <p>For Flat A of 90/F of Zone 1 of Tower 21: Bathroom of bedrooms 3 and 4: Glass door fitted with door stopper; Bathroom: Hollow core timber door with wooden veneer, fitted with lockset. Bathroom door is equipped with timber veneered louvre.</p> <p>For Flat A of 91/F of Zone 1 of Tower 21: Bathroom of bedrooms 3 and 4: Glass door; Bathroom of study room: Hollow core timber door with wood veneer, fitted with lockset and door stopper; Bathroom: Hollow core timber door with wood veneer, fitted with lockset and door stopper. Bathroom door is equipped with timber veneered louvre.</p> <p>For Flat C of 91/F of Zone 1 of Tower 21: Bathroom of bedroom 3: Hollow core timber door with wood veneer, fitted with lockset and door stopper; Bathrooms of bedroom 4: Timber sliding door with wood veneer and cushion panel ; Bathroom: Hollow core timber door with wood veneer, fitted with lockset and door stopper. Bathroom door is equipped with timber veneered louvre; Bathroom of study room: Hollow core timber door with wood veneer, fitted with lockset and door stopper.</p>

Fittings, finishes and appliances

裝置、裝修物料及設備

Item	Description	
a. Doors	Back Door	Solid core timber door with timber veneer and metal finish, fitted with lockset, door viewer, door stopper and concealed door closer is provided at the following unit: Tower 20: Bedroom 1 of Flat A of 91/F of Zone 1 Tower 20: Bedroom 3 of Flat C of 91/F of Zone 1 Solid core timber door with timber veneer and metal trim, fitted with lockset, door stopper and concealed door closer is provided at the following unit: Tower 20: Bedroom 5 of Flat A of 91/F of Zone 1
	Toilet inside Living/ Dining Room	Solid core timber door with timber veneer and metal trim, fitted with lockset, door stopper and timber veneered louvre is provided at the following unit: Tower 20: Flat A of 91/F of Zone 1
	Toilet inside Study	Hollow core timber sliding door with timber veneer and metal finish, fitted with lockset and timber veneered louvre is provided at the following unit: Tower 20: Flat C of 91/F of Zone 1
	Store Room Door	Hollow core timber door with wood veneer finish, fitted with metal lockset except the following units: For all units of Zone 1 of Tower 20 (except Flat A, Flat C and Flat D of 91/F): Solid core timber door with wood veneer finish, fitted with metal lockset. For Flat A of 91/F of Zone 1 of Tower 20: Store Room Door (store inside kitchen): Hollow core timber sliding door with timber veneer and metal trim, fitted with lockset. Store Room Door (store inside staircase): Hollow core timber door with timber veneer and metal trim, fitted with lockset and door stopper. For Flat C of 91/F of Zone 1 of Tower 20: Hollow core timber door with timber veneer finish and stainless steel trim, fitted with lockset and door stopper. For Flat D of 91/F of Zone 1 of Tower 20: Hollow core timber door with timber grid on wood veneer, fitted with lockset and concealed door closer. For Flat C of 79/F of Zone 3 of Tower 21: Stainless steel sliding grid partition. For Flat C of 80/F of Zone 3 of Tower 21: Hollow core timber door with wood veneer and mirror, fitted with door stopper. For Flat A of 90/F of Zone 1 of Tower 21: Hollow core timber door with wood veneer, fitted with lockset and door stopper. For Flat A of 91/F of Zone 1 of Tower 21: Hollow core timber sliding door with wood veneer, fitted with lockset. For Flat C of 91/F of Zone 1 of Tower 21: Hollow core timber door with wood veneer, fitted with lockset and door stopper.
	Lavatory Door of Store Room	Frost glass door with metal door frame except the following units: For Flat A and Flat C of 91/F of Zone 1 of Tower 20: Metal folding door with frost glass panel, fitted with lockset and metal louvre. For Flat D of 91/F of Zone 1 of Tower 20: Glass door. For Flat C of 79/F of Zone 3 of Tower 21: Glass sliding door. For Flat C of 80/F of Zone 3 of Tower 21: Hollow core timber door with wood veneer, equipped with wood veneer louvre and fitted with lockset. For Flat A of 90/F of Zone 1 of Tower 21: Hollow core timber door with wood veneer, fitted with locksets and door stopper. For Flat A of 91/F of Zone 1 of Tower 21: Hollow core timber sliding door with stainless steel cover on wood veneer. For Flat C of 91/F of Zone 1 of Tower 21: Metal folding door with glass panel.
	Flat Roof	Sliding glass door with metal door frame and handle, fitted with metal lockset is provided at following units : Tower 20 : Flat A of 91/F, Flat C of 91/F and Flat D of 91/F of Zone 1. Tower 20 : Flat A of 12/F, Flat B of 12/F, Flat B of 37/F and Flat C of 38/F of Zone 2. Tower 21 : Flat A of 82/F, Flat A of 91/F, Flat B of 91/F and Flat C of 91/F of Zone 1. Tower 21 : Flat C of 80/F, Flat A of 81/F, Flat B of 81/F and Flat D of 81/F of Zone 3. Tower 21 : Flat A of 12/F, Flat B of 12/F, Flat B of 37/F and Flat C of 38/F of Zone 6.

Item	Description
b. Bathroom	<p>Bathrooms are fitted with natural stone countertop, chrome-plated wash basin mixer, bath and shower mixer and shower set, vitreous china wash basin, vitreous china water closet with cistern and enameled cast iron bathtub (1500mm long x 700mm width x 420mm high). Other fittings include LCD television, water heater (please refer to Appliances Schedule for the applicable units), concealed ventilation fan, chrome-plated towel bar, towel ring, paper holder and wooden mirror cabinet. Multifunctional dehumidifier is provided in some bathrooms (as indicated under the Mechanical & Electrical Provision Plan). Crystal ceiling light is provided in the bathroom of Bedroom 3 of the following units:</p> <p>Tower 20 : Flat D of 67/F - 90/F of Zone 1; Tower 21 : Flat A of 15/F - 91/F of Zone 1.</p> <p>For Flat A of 91/F of Zone 1 of Tower 20: Bathroom and bathroom of bedroom 1: Fitted with natural stone countertop; brushed black metal wash basin mixer, bath mixer, shower mixer, shower set, towel bar, towel hook, paper holder; vitreous china wash basin and water closet; enameled cast iron bathtub (1400mm length x 730mm width x 410mm depth); wooden mirror cabinet. Bathroom of bedroom 5: Fitted with natural stone countertop; brushed black metal wash basin mixer, bath mixer, shower mixer, shower set, towel bar, towel hook and paper holder; vitreous china wash basin and water closet; enameled cast iron bathtub (1600mm length x 700mm width x 430mm depth). Bathroom inside Study: Fitted with natural stone countertop; brushed black metal wash basin mixer, shower mixer, shower set, towel bar, towel hook and paper holder; vitreous china wash basin and water closet; wooden mirror cabinet.</p> <p>For Flat C of 91/F of Zone 1 of Tower 20: Bathrooms: Fitted with natural stone countertop; brushed black metal wash basin mixer, bath mixer, shower mixer, shower set, towel bar, towel hook and paper holder; vitreous china wash basin and water closet; enameled cast iron bathtub (1400mm length x 730mm width x 410mm depth); wooden mirror cabinet.</p> <p>For Flat D of 91/F of Zone 1 of Tower 20: Bathroom of bedroom 3: Fitted with natural stone countertop, chrome-plated wash basin mixer, bath mixer, shower mixer and shower set, ceramic wash basin and ceramic water closet with concealed cistern and acrylic bathtub (1810mm length x 960mm width x 400mm depth). Other fittings include wooden cabinet; Bathroom of bedroom 4: Fitted with chrome-plated wash basin mixer, shower mixer and shower set, natural stone wash basin with glass and ceramic water closet with cistern. Other fittings include wooden frame mirror; Bathroom of study room: Fitted with natural stone countertop, chrome-plated wash basin mixer, shower mixer and shower set, ceramic wash basin and ceramic water closet with cistern; Bathroom: Fitted with natural stone countertop, chrome-plated wash basin mixer, shower mixer and shower set, natural stone wash basin and ceramic water closet with concealed cistern.</p> <p>For Flat C of 79/F of Zone 3 of Tower 21: Bathroom of bedroom 2: Fitted with natural stone countertop, chrome-plated wash basin mixer, bath mixer, shower mixer and shower set, ceramic wash basin, ceramic water closet with cistern and enameled cast iron bathtub (1670mm length x 770 width x 410mm depth). Other fittings include wooden mirror cabinet with high gloss lacquered finish inside, chrome-plated towel holder, chrome-plated towel bar, chrome-plated paper holder; Bathroom of bedroom 4: Fitted with natural stone countertop, chrome-plated wash basin mixer, shower mixer, shower set, ceramic wash basin and ceramic water closet with cistern. Other fittings include wooden mirror cabinet with high gloss lacquered finish inside, chrome-plated towel holder, chrome-plated towel bar, chrome-plated paper holder; Bathroom: Fitted with natural stone countertop, chrome-plated wash basin mixer, shower mixer, shower set, ceramic wash basin, ceramic water closet with cistern and enameled cast iron bathtub (1450mm length x 730mm width x 410mm depth). Other fittings include wooden mirror cabinet with high gloss lacquered finish inside, chrome-plated towel bar, chrome-plated paper holder.</p> <p>For Flat C of 80/F of Zone 3 of Tower 21: Bathroom of bedroom 3: Fitted with natural stone countertop, chrome-plated wash basin mixer, bath mixer, shower mixer shower set, natural stone wash basin, ceramic water closet with concealed cistern and acrylic bathtub (1500mm length x 700mm width x 440mm depth). Other fittings include glass cabinet with mirror, chrome-plated towel bar, chrome-plated paper holder; Bathroom of bedroom 4: Fitted with natural stone countertop, chrome-plated wash basin mixer, shower mixer and shower set, ceramic wash basin, ceramic water closet with concealed cistern. Other fittings include wooden mirror cabinet, chrome-plated paper holder; Bathroom of bedroom 5: Fitted with natural stone countertop, chrome-plated wash basin mixer, bath mixer, shower mixer and shower set, ceramic wash basin, ceramic water closet with cistern and acrylic bathtub (2035mm length x 995mm width x 370mm depth). Other fittings include wooden cabinet with mirror, chrome-plated paper holder; Bathroom of study room: Fitted with natural stone countertop, chrome-plated wash basin mixer, shower mixer and shower set, ceramic wash basin and ceramic water closet with cistern. Other fittings include chrome-plated paper holder; Bathroom: Fitted with natural stone countertop, chrome-plated wash basin mixer, shower mixer and shower set, acrylic basin and ceramic water closet with cistern. Other fittings include chrome-plated towel bar, chrome-plated paper holder.</p> <p>For Flat A of 90/F of Zone 1 of Tower 21: Bathroom of bedroom 3: Fitted with natural stone countertop, chrome-plated wash basin mixer, bath mixer, shower mixer, shower set, natural stone wash basin and ceramic water closet with concealed cistern and enameled cast iron bathtub (1380 length x 760mm width x 410mm depth). Other fittings include wooden mirror cabinet, chrome-plated towel bar, chrome-plated paper holder; Bathroom of bedroom 4: Fitted with natural stone countertop, chrome-plated wash basin mixer, bath mixer, shower mixer, shower set, ceramic wash basin, ceramic water closet with concealed cistern and enameled cast iron bathtub (1460 length x 700mm width x 440mm depth). Other fittings include wooden mirror cabinet, chrome-plated towel holder, chrome-plated towel bar, chrome-plated paper holder; Bathroom: Fitted with natural stone countertop, chrome-plated wash basin mixer, shower mixer, shower set, ceramic wash basin, ceramic water closet with concealed cistern. Other fittings include wooden mirror cabinet, chrome-plated towel bar, chrome-plated paper holder.</p>

Fittings, finishes and appliances

裝置、裝修物料及設備

Item	Description
b. Bathroom	<p>For Flat A of 91/F of Zone 1 of Tower 21:</p> <p>Bathroom of bedroom 3: Fitted with natural stone countertop, chrome-plated wash basin mixer, bath mixer, shower mixer, shower set, ceramic wash basin, ceramic water closet with cistern and enameled cast iron massage bathtub (1460mm length x 720mm width x 460mm depth). Other fittings include wooden mirror cabinet, chrome-plated towel holder, chrome-plated towel bar, chrome-plated paper holder;</p> <p>Bathroom of bedroom 4: Fitted with natural stone countertop, chrome-plated wash basin mixer, bath mixer, shower mixer, shower set, ceramic wash basin, ceramic water closet with concealed cistern and enameled cast iron bathtub (1350mm length x 650mm width x 420mm depth). Other fittings include wooden mirror cabinet, chrome-plated towel holder, chrome-plated towel bar, chrome-plated paper holder;</p> <p>Bathroom of study room: Chrome-plated wash basin mixer, shower mixer, shower set, stand-alone ceramic wash basin and ceramic wash closet with concealed cistern. Other fittings include wooden mirror cabinet, chrome-plated towel bar, chrome-plated paper holder;</p> <p>Bathroom: Natural stone countertop, chrome-plated wash basin mixer, shower mixer, shower set, ceramic wash basin and ceramic water closet with concealed cistern. Other fittings include wooden mirror cabinet, chrome-plated towel bar, chrome-plated paper holder.</p> <p>For Flat C of 91/F of Zone 1 of Tower 21:</p> <p>Bathroom of bedroom 3: Fitted with natural stone countertop, chrome-plated wash basin mixer, bath mixer, shower mixer, shower set, ceramic wash basin, ceramic water closet with cistern and enameled cast iron bathtub (1600mm length x 740mm width x 435mm depth). Other fittings include mirror cabinet with high gloss lacquered wood veneer finish, wooden cabinet with high gloss lacquered finish, chrome-plated towel bar;</p> <p>Bathroom of bedroom 4 (right hand side of 92/F entrance door): Fitted with natural stone countertop, chrome-plated wash basin mixer, shower mixer, shower set, ceramic wash basin and ceramic water closet with concealed cistern. Other fittings include mirror cabinet with high gloss lacquered wood veneer finish, wooden cabinet with high gloss lacquered finish, chrome-plated towel bar;</p> <p>Bathroom of bedroom 4 (left hand side of 92/F entrance door): Fitted with natural stone countertop, chrome-plated wash basin mixer, bath mixer, shower mixer, shower set, ceramic wash basin, ceramic water closet with concealed cistern and acrylic massage bathtub (2050mm length x 1130mm width x 470mm depth). Other fittings include glass mirror cabinet, wooden cabinet with high gloss lacquered finish and fabric cushion, chrome-plated towel bar;</p> <p>Bathroom of study room: Fitted with chrome-plated wash basin mixer, shower mixer, shower set, stand-alone ceramic wash basin, ceramic wash closet with concealed cistern. Other fittings include glass mirror cabinet, chrome-plated towel bar;</p> <p>Bathroom: Fitted with natural stone countertop, chrome-plated wash basin mixer, shower mixer and shower set, glass wash basin and ceramic water closet with concealed cistern. Other fittings include mirror cabinet with high gloss lacquered wood veneer finish, wooden cabinet with high gloss lacquered finish, chrome-plated towel bar;</p> <p>Shower cubicle (if applicable as shown on the floor plans) is finished with natural stone with tempered glass door and partitions.</p> <p>Indirect feed water supply system is provided. Copper pipes for cold water supply and copper pipes with thermal insulation for hot water supply. For type of equipment please refer to "Appliances Schedule".</p>

Item	Description
c. Kitchen	<p>Wooden cabinets with glass finished door panels are provided in the following units:</p> <p>Flat A of 87/F, Flat A of 88/F, Flat A of 89/F and Flat A of 90/F of Zone 1 of Tower 20.</p> <p>Wooden cabinets with high gloss lacquered and aluminum finished door panels are provided in the following units: All units of Zone 1 of Tower 20 (except Flat A of 87/F, Flat A of 88/F, Flat A of 89/F and Flat A of 90/F) ; All Flat A and Flat B units of Zone 2 of Tower 20, Flat C of 38/F of Zone 2 of Tower 20 ; All units of Zone 1 and Zone 2 and Zone 3 of Tower 21 ; All Flat A and Flat B units of Zone 6 of Tower 21, Flat C of 38/F of Zone 6 of Tower 21.</p> <p>Wooden cabinets with matt lacquered and wood finished door panels are provided in the following unit: Flat A of 91/F of Zone 1 of Tower 20</p> <p>Wooden cabinets with high gloss lacquered and wood finished door panels are provided in the following unit: Flat C of 91/F of Zone 1 of Tower 20</p> <p>Wooden cabinets with high gloss lacquered door panels are provided in the following units: All Flat C and Flat D units of 12/F - 37/F of Zone 2 of Tower 20 ; All Flat E units of 16/F - 38/F of Zone 2 of Tower 20, all units of Zone 5 of Tower 21 ; All Flat C and Flat D units of 12/F - 37/F of Zone 6 of Tower 21, Flat E of 15/F - 38/F of Zone 6 of Tower 21.</p> <p>Wooden cabinets with high gloss lacquered finish door panels and compact laminated door panels are provided in the following units: Flat D of 91/F of Zone 1 of Tower 20; Falt C of 79/F and Flat C of 80/F of Zone 3 of Tower 21.</p> <p>Wooden cabinets with compact laminated door panels are provided in the following units: Flat A of 90/F, Flat A of 91/F and Flat C of 91/F of Zone 1 of Tower 21.</p> <p>Copper pipes for cold water supply and copper pipes with thermal insulation for hot water supply. For type of equipment please refer to "Appliances Schedule".</p> <p>Kitchen is fitted with stainless steel sink and chrome-plated sink mixer.</p>
d. Bedroom	<p>Built-in wooden wardrobe is provided in the following bedrooms: Bedroom 4 of Flat A, Bedroom 2 of Flat B, Bedroom 3 of Flat C and Bedroom 3 of Flat D of 67/F - 90/F of Zone 1 of Tower 20;</p> <p>Bedroom 1 and Bedroom 5 of Flat A of 91/F of Zone 1 of Tower 20;</p> <p>Bedroom 3 of Flat C of 91/F of Zone 1 of Tower 20;</p> <p>Bedroom 3 of Flat D of 91/F of Zone 1 of Tower 20;</p> <p>Bedroom 2 of Flat C of 79/F of Zone 3 of Tower 21;</p> <p>Bedroom 1 and 4 of Flat C of 80/F of Zone 3 of Tower 21;</p> <p>Bedroom 3 of Flat A of 90/F of Zone 1 of Tower 21;</p> <p>Bedroom 2, 3 and 4 of Flat A of 91/F of Zone 1 of Tower 21.</p>
e. Telephone	<p>Telephone outlets are provided in living/dining room and bedrooms. For the location and number of the connection points, please refer to "Mechanical & Electrical Provision Plan/Schedule".</p>
f. Aerials	<p>Communal TV/FM/Satellite TV outlets are provided at living/dining room and bedrooms. For the location and number of the connection points, please refer to "Mechanical & Electrical Provision Plan/Schedule".</p>
g. Electrical Installations	<p>Concealed conduits are provided. Three/Single-phase electricity supply with miniature circuit breaker (MCB) distribution board is provided. Ceiling light points, socket outlets, lighting switches, switches for air-conditioner, water heater and exhaust fan are provided. Power point for curtain is provided at living room and bedroom.</p> <p>For the locations and numbers of power points and air-conditioner points, please refer to "Mechanical & Electrical Provision Plan/Schedule".</p>
h. Gas Supply	<p>Gas meter with gas supply pipe is provided and connected to gas hob (except Tower 21 : Flat K of Zone 5) and gas water heater (except Tower 21 : Flat E of 87/F of Zone 1 and Flat E of 90/F of Zone 1). Gas meter is located in kitchen for all units. For the location of gas meter, please refer to "Mechanical & Electrical Provision Plan/Schedule".</p>

Fittings, finishes and appliances

裝置、裝修物料及設備

Item	Description
j. Water Supply	Concealed and exposed copper water pipes# for cold water supply. Concealed and exposed copper water pipes# with thermal insulation for hot water supply. Hot water is available.

4. Miscellaneous		
a. Lifts	Tower 21	13 nos. of "Hitachi" passenger lifts and 3 nos. of "Hitachi" service lifts installed serving floors as below: 3 nos. passenger lifts of Model No. HVF3 serving Zone 1 (L/F, 67/F-73/F, 75/F-83/F, 85/F-91/F); 3 nos. passenger lifts of Model No. HVF3 serving Zone 2 (L/F, 15/F-23/F, 25/F-33/F, 35/F-38/F, 50/F-52/F, 55/F-57/F, 59/F-63/F); 2 nos. passenger lifts of Model No. UVF serving Zone 3 (L/F, 67/F-73/F, 75/F-81/F); 3 nos. passenger lifts of Model No. HVF3 serving Zone 5 (L/F, 15/F-23/F, 25/F-33/F, 35/F-38/F, 50/F-52/F, 55/F-57/F, 59/F-63/F); 2 nos. passenger lifts of Model No. HVF3 serving Zone 6 (L/F, 12/F, 15/F-23/F, 25/F-33/F, 35/F-38/F); 1 no. service lift of Model No. HVF3 serving B1/F, G/F, 1/F-3/F, L/F, CH1/F, CH2/F, CH3/F, 15/F-23/F, 25/F-33/F, 35/F-38/F, 50/F-52/F, 55/F-57/F, 59/F-63/F, 67/F-73/F, 75/F-83/F and 85/F-91/F of Zone 1, 2, 3 and 5; 1 no. service lift of Model No. UVF4 serving B1/F, G/F, M/F, 1/F-3/F, L/F, CH1/F, CH2/F, CH3/F, 8/F, 12/F, 15-23/F, 25/F-33/F, 35/F-40/F, 50/F-52/F, 55/F-57/F, 59/F-63/F, 65/F-73/F, 75/F-83/F and 85/F-91/F of Zone 1, 2, 3, and 5; and 1 no. service lift of Model No. VF5 serving 3/F, L/F, CH1/F, CH2/F, CH3/F, 8/F, 12/F, 15/F-23/F, 25/F-33/F and 35/F-38/F of Zone 6.
	Tower 20	5 nos. of "Fujitec" passenger lifts of Model No. VVVF and 2 nos. of "Fujitec" service lifts of Model No. VVVF are installed at Tower 20 serving floors as below: 3 nos. passenger lifts serving Zone 1 (L/F, 67/F-73/F, 75/F-83/F, 85/F-91/F); 2 nos. passenger lifts serving Zone 2 (L/F, 12/F, 15/F-23/F, 25/F-33/F, 35/F-38/F); 1 no. service lift serving B1/F, G/F, 3/F, L/F, 6/F-8/F, U8/F, 16/F-23/F, 25/F-33/F, 35/F-38/F, 50/F-52/F, 55/F-57/F, 59/F-63/F, 66/F-73/F, 75/F-83/F and 85/F-91/F of Zone 1; and 1 no. service lift serving 3/F, L/F, 6/F-8/F, U8/F, 12/F, 15/F-23/F, 25/F-32/F, 33/F and 35/F-39/F of Zone 2.
	Lobby Floor (L/F) and Carpark	1 no. "Fujitec" passenger lift of Model No. VVVF serves 3/F carpark and L/F. 2 nos. of "Hitachi" passenger lifts of Model No. VF5 serves 1/F, 3/F carpark and L/F.
b. Letter Box	Stainless steel letter boxes are provided.	
c. Refuse Collection	Refuse room is provided at each service apartment and residential floor. Collected refuse is centrally handled at Refuse Storage and Material Recovery Room at B1/F.	

Item	Description
d. Water Meter, Electricity Meter and Gas Meter	Separate gas meter is provided in the kitchen of individual unit. Separate water and electricity meters for each individual unit are provided in common meter rooms on respective service apartment and residential floors.

5. Security Facilities
The main entrance, car park lift lobbies, lifts, clubhouse and L/F common areas are installed with CCTV system. Colored video door phone is installed in each service apartment and residential unit and linked to the visitor panel at the main entrance and the concierge at main lobby. Visitor panel with build-in card reader and combination lock for residents' access is provided at the main entrance at L/F. Vehicular control system is installed at the carpark entrances at 3/F. Panic alarm push button is installed in master bedroom of each unit and is linked to Security Control Room at 3/F.

6. Appliances
As set out in the "Appliances Schedule".

In relation to item 4(a) and 6 in the Phase specified in the above table, the Vendor undertakes that if lifts or appliances of the specified brand name or model number are not installed in the Phase , lifts or appliances of comparable quality will be installed.

Remark : # Exposed water pipes are not readily visible as they are placed behind false ceilings and cabinets.

Fittings, finishes and appliances

裝置、裝修物料及設備

細項	描述
1. 外部裝修物料	
a. 外牆	大廈外牆裝有鋁飾板、玻璃百葉、瓦片及玻璃幕牆。 平台外牆以白微晶石材及鋁飾板鋪砌，並裝有鋁百葉及玻璃幕牆。
b. 窗	窗戶及玻璃幕牆均以鋁質窗框配以氟碳噴塗及有色玻璃。
c. 窗台	沒有
d. 花槽	大堂樓層及以下單位之平台之花槽的外部表面鋪上天然石材： 第20座：第2區，37樓B室及38樓C室； 第21座：第1區，82樓A室及91樓B室； 第21座：第3區，81樓A室、81樓B室及81樓D室； 第21座：第6區，12樓A室、12樓B室、37樓B室及38樓C室。 以下單位之平台裝有不銹鋼花槽： 第20座：第1區，91樓A室及91樓C室； 第20座：第1區，91樓D室； 第20座：第2區，12樓A室及B室； 第21座：第1區，91樓A室。 以下單位之平台裝有不銹鋼花槽及洗水石米花槽： 第21座：第3區，80樓C室。 以下單位之平台裝有不銹鋼花槽及外部表面鋪上天然石材之花槽： 第21座：第1區，91樓C室。
e. 陽台或露台	沒有
f. 乾衣設施	沒有

2. 室內裝修物料		
a. 大堂	穿梭升降機平台大堂	地台鋪砌天然石材。牆身鋪砌天然石材、裝飾玻璃、鏡及不銹鋼板飾面。天花裝設石膏板假天花。
	住宅升降機入口大堂	地台鋪砌天然石材。牆身鋪砌天然石材、裝飾玻璃、鏡及不銹鋼板飾面。天花裝設石膏板假天花。
	住宅各樓層升降機大堂	地台鋪砌天然石材。牆身鋪砌天然石材、裝飾玻璃及鏡。天花裝設石膏板假天花。
b. 內牆及天花板	各單位客廳、飯廳及睡房內牆身均髹上乳膠漆;客廳、飯廳及睡房天花板髹上乳膠漆及部份裝設石膏板假天花。下列單位除外： 第20座，第1區，67樓至85樓A室： 客廳、飯廳及睡房內牆身均髹上乳膠漆，但睡房1的玻璃牆牆身不設裝修物料; 客廳、飯廳及睡房天花板髹上乳膠漆及部份裝設石膏板假天花。 第20座，第1區，86樓A室： 客廳及飯廳內牆身均鋪貼牆紙，部分牆身位置裝有鏡飾面； 睡房內牆身均鋪貼牆紙，但睡房1的玻璃牆牆身不設裝修物料； 客廳、飯廳及睡房的天花板均髹上乳膠漆及部份裝設石膏板假天花。 第20座，第1區，87樓A室、88樓A室及89樓A室： 客廳及飯廳內牆身均髹上乳膠漆，部分牆身位置裝有木皮飾面； 睡房內牆身均髹上乳膠漆； 客廳、飯廳及睡房的天花板均髹上乳膠漆及部份裝設木及石膏板假天花。	

細項	描述
	第20座，第1區，90樓A室： 客廳及飯廳內牆身均鋪貼牆紙，部分牆身位置裝有木皮及鏡飾面，客廳及飯廳天花板均髹上乳膠漆及部份裝設木、不銹鋼及石膏板假天花； 所有睡房內牆身均鋪貼牆紙，所有睡房天花板均髹上乳膠漆及部份裝設石膏板假天花。 第20座，第1區，91樓A室： 客廳及飯廳內牆身均髹上乳膠漆，部分牆身位置裝有金屬、木皮及天然石材，客廳及飯廳天花板均髹上乳膠漆及部份裝設石膏板假天花； 所有睡房內牆身(睡房4除外)均髹上乳膠漆及部分牆身位置裝有木皮，所有睡房天花板均髹上乳膠漆及部份裝設石膏板假天花。 睡房4內牆身髹上乳膠漆及部份裝設玻璃牆身。 第20座，第1區，91樓C室： 客廳及飯廳內牆身均髹上乳膠漆，部分牆身位置裝有木皮及天然石材，客廳及飯廳天花板均髹上乳膠漆及部份裝設石膏板假天花； 所有睡房內牆身髹上乳膠漆及部分牆身位置裝有木皮，所有睡房天花板均髹上乳膠漆及部份裝設石膏板假天花。 第20座，第1區，91樓D室： 客廳及飯廳內牆身均鋪貼牆紙，鋪砌天然石材、木皮、鏡面、人造皮、不銹鋼框及玻璃面板飾面； 睡房2內牆身鋪砌鏡面、木皮、織布咕臣及人造皮飾面； 睡房3內牆身鋪砌天然石材，裝有鏡面、木皮、咕臣及鏡飾面配以金屬框； 睡房4內牆身鋪貼牆紙，鋪砌天然石材、不銹鋼架及人造塑料飾面； 客廳及飯廳天花板裝設石膏板假天花及髹上乳膠漆，配上金屬飾條； 睡房2、3及4天花板均裝設石膏板假天花及髹上乳膠漆。 第21座，第3區，79樓C室： 客廳及飯廳內牆身均鋪貼牆紙，鋪砌天然石材、人造皮、鏡面、不銹鋼架、玻璃面板及馬賽克連玻璃面板飾面； 睡房1內牆身鋪貼牆紙，裝有人造皮面板配上不銹鋼架、鏡面及木皮飾面； 睡房2內牆身鋪貼牆紙，裝有人造皮面板配上不銹鋼架、鏡面、木皮及馬賽克連不銹鋼架飾面； 睡房4內牆身鋪貼牆紙，裝有玻璃牆連不銹鋼架、不銹鋼面板、鏡面及木皮飾面； 客廳、飯廳、睡房1、2及4天花板均裝設石膏板假天花及髹上乳膠漆。 第21座，第3區，80樓C室： 客廳及飯廳內牆身均髹上乳膠漆，鋪貼牆紙，鋪砌天然石材，裝有玻璃牆連不銹鋼框、鏡面及木皮飾面； 睡房1內牆身髹上油漆，鋪砌天然石材，裝有木皮、人造皮、玻璃牆連不銹鋼框及不銹鋼飾面； 睡房2內牆身鋪貼牆紙，裝有鏡面及木皮飾面； 睡房3內牆身鋪貼牆紙，裝有鏡面、木皮及人造皮飾面； 睡房4內牆身鋪貼牆紙，裝有玻璃板及木皮飾面； 睡房5內牆身鋪貼牆紙，裝有咕臣、鏡面、木皮及織布飾面； 客廳及飯廳天花板均鋪貼牆紙、裝設石膏板假天花及髹上乳膠漆； 睡房1天花板裝設有色鏡飾面； 睡房2、3及4天花板均裝設石膏板假天花及髹上乳膠漆； 睡房5天花板裝有鏡面，裝設石膏板假天花及髹上乳膠漆。 第21座，第1區，90樓A室： 客廳及飯廳內牆身裝有不銹鋼、鏡面、木皮飾面及玻璃牆；睡房1內牆身鋪貼牆紙，裝有鏡面及玻璃牆連不銹鋼架； 睡房2內牆身鋪貼牆紙，裝有鏡面及人造皮飾面； 睡房3內牆身裝有鏡面、不銹鋼框、木皮、人造皮及玻璃飾面； 睡房4內牆身鋪貼牆紙，裝有玻璃面板、鏡面及木皮飾面； 客廳及飯廳天花板均裝設木製面板、石膏板假天花及髹上乳膠漆； 睡房1、2、3及4天花板均裝設石膏板假天花及髹上乳膠漆。 第21座，第1區，91樓A室： 客廳及飯廳內牆身均鋪貼牆紙連不銹鋼格仔框，鋪砌天然石材，裝有金屬面板及木皮飾面； 睡房2內牆身鋪砌天然石材，裝有織布及木皮飾面； 睡房3內牆身鋪砌天然石材，裝有木皮、人造皮及不銹鋼板飾面； 睡房4內牆身鋪砌天然石材，裝有木皮、織布及不銹鋼飾面； 客廳、飯廳、睡房2、3及4天花板均裝設石膏板假天花及髹上乳膠漆。 第21座，第1區，91樓C室： 客廳及飯廳內牆身均鋪砌天然石材，裝有木皮配以高光焗漆飾面、鏡面、織布咕臣飾面及石膏天花裝飾板條； 睡房1內牆身裝有木皮配以高光焗漆飾面、鏡面、織布咕臣飾面及石膏天花裝飾板條；睡房2內牆身鋪貼牆紙，裝有木皮配以高光焗漆飾面、鏡面、人造皮飾面及石膏天花裝飾板條； 睡房3內牆身鋪貼牆紙，裝有織布咕臣、鏡面、木皮配以高光焗漆飾面及石膏天花裝飾板條； 睡房4內牆身鋪砌天然石材，裝有咕臣、鏡面、木皮配以高光焗漆飾面、織布咕臣連不銹鋼格仔框； 客廳及飯廳天花板均裝設石膏板假天花及髹上乳膠漆連鏡飾邊； 睡房1天花板裝設石膏板假天花髹上乳膠漆連鏡飾邊； 睡房2、3及4天花板均裝設石膏板假天花及髹上乳膠漆。

Fittings, finishes and appliances

裝置、裝修物料及設備

細項	描述
c. 內部地板	<p>各單位客廳、飯廳及睡房內地台鋪砌複合木地板及木地腳線。下列單位除外：</p> <p>第20座，第1區所有A室單位(91樓A室除外)： 客廳、飯廳及睡房 1 之地台均鋪砌天然石材及天然石材地腳線； 全部睡房內部地台鋪砌複合木地板及木地腳線。</p> <p>第20座，第1區，91樓A室： 客廳及飯廳之內部地台均鋪砌天然石材，天然石材地腳線及不銹鋼地腳線； 所有睡房內部地台鋪砌複合木地板及木地腳線。</p> <p>第20座，第1區，91樓C室： 客廳及飯廳之內部地台均鋪砌天然石材及天然石材地腳線； 所有睡房內部地台鋪砌複合木地板及木地腳線。</p> <p>第20座，第1區，91樓D室： 客廳及飯廳之內部地台均鋪砌天然石材及不銹鋼地腳線； 睡房2、3及4之內部地台均鋪砌地毯。</p> <p>第20座，第2區，12樓A室： 客廳及飯廳之內部地台鋪砌天然石材及天然石材地腳線、玻璃及複合木地板及木地腳線； 睡房1、2、3及4之內部地台鋪砌複合木地板及木地腳線。</p> <p>第21座，第3區，79樓C室： 客廳及飯廳之內部地台均鋪砌天然石材及不銹鋼地腳線； 睡房1、2及4之內部地台均鋪砌地毯及不銹鋼地腳線。</p> <p>第21座，第3區，80樓C室： 客廳及飯廳之內部地台均鋪砌天然石材； 睡房1之內部地台鋪砌膠地板及木地腳線； 睡房2之內部地台鋪砌地毯及木地腳線； 睡房3及5之內部地台均鋪砌地毯及木地腳線； 睡房4之內部地台鋪砌膠地板。</p> <p>第21座，第1區，90樓A室： 客廳、飯廳及睡房 1之內部地台均鋪砌天然石材及不銹鋼地腳線； 睡房2及4之內部地台均鋪砌複合木地板及不銹鋼地腳線； 睡房3之內部地台鋪砌地毯及不銹鋼地腳線。</p> <p>第21座，第1區，91樓A室： 客廳及飯廳均鋪砌天然石材及複合木地板； 睡房2、3及4之內部地台均鋪砌複合木地板。</p> <p>第21座，第1區，91樓C室： 客廳及飯廳之內部地台均鋪砌天然石材及天然石材地腳線； 睡房1之內部地台鋪砌天然石材及天然石材地腳線； 睡房2及3之內部地台均鋪砌地毯及木地腳線； 睡房4之內部地台鋪砌地毯、天然石材及木地腳線配以高光焗漆飾面。</p>
d. 浴室	<p>各單位的浴室牆身鋪砌天然石材及鏡飾面至假天花底。下列單位除外：</p> <p>第20座，第1區，91樓A室及C室： 浴室牆身鋪砌木皮、金屬、天然石材及鏡面至假天花底。</p> <p>第20座，第1區，91樓D室： 睡房3浴室：浴室牆身鋪砌天然石材，裝有鏡面及木皮飾面至假天花底； 睡房4浴室：浴室牆身鋪砌天然石材，裝有玻璃面板及鏡面至假天花底； 書房浴室及浴室: 浴室牆身鋪砌天然石材及裝有鏡面至假天花底。</p> <p>第21座，第3區，79樓C室： 睡房2及4浴室及浴室：浴室牆身鋪砌天然石材及裝有鏡面至假天花底。</p>

細項	描述
	<p>第21座，第3區，80樓C室： 睡房3浴室：浴室牆身鋪砌天然石材、馬賽克及裝有鏡面至假天花底； 睡房4浴室：浴室牆身鋪砌天然石材及裝有玻璃面板至假天花底； 睡房5浴室：浴室牆身鋪砌天然石材及裝有玻璃面板、鏡面及木皮飾面至假天花底； 書房浴室：浴室牆身鋪砌天然石材，裝有不銹鋼面板及鏡面至假天花底； 浴室：浴室牆身鋪砌天然石材及裝有鏡面至假天花底。</p> <p>第21座，第1區，90樓A室： 睡房3浴室：浴室牆身鋪砌天然石材及裝有鏡面至假天花底； 睡房4浴室：浴室牆身鋪砌天然石材，裝有玻璃面板配以不銹鋼框及鏡面至假天花底； 浴室：浴室牆身鋪砌天然石材至假天花底。</p> <p>第21座，第1區，91樓A室： 睡房3及4浴室及浴室：浴室牆身鋪砌天然石及不銹鋼至假天花底； 書房浴室: 浴室牆身鋪砌天然石材及裝有玻璃面板至假天花底。</p> <p>第21座，第1區，91樓C室， 浴室、睡房3及4 (睡房4右方) 浴室及書房浴室：浴室牆身鋪砌天然石材至假天花底； 睡房4浴室 (睡房4左方)：浴室牆身裝有鏡面及天然石材至假天花底。</p> <p>各單位的浴室地台鋪砌天然石材。</p> <p>各單位的浴室天花板裝設石膏板假天花。下列單位除外：</p> <p>第20座，第1區，91樓A室： 浴室天花板(睡房5的浴室除外)裝設石膏板假天花及髹上乳膠漆。 睡房5的浴室: 天花板裝設石膏板假天花及髹上乳膠漆及裝設鋁質假天花。</p> <p>第20座，第1區，91樓C室及D室，第21座，第3區，80樓C室 (睡房3及5浴室除外)，第21座，第1區，90樓A室 (睡房3浴室除外)、91樓A室及91樓C室 (睡房4浴室 (睡房4左方) 除外)： 浴室天花板裝設石膏板假天花及髹上乳膠漆。</p> <p>第21座，第1區，90樓A室： 睡房3浴室：天花板裝設鏡面、石膏板假天花及髹上乳膠漆。</p> <p>第21座，第3區79樓C室： 浴室、睡房2及4浴室: 浴室天花板裝設石膏板假天花及髹上乳膠漆及裝設鋁質假天花。</p> <p>第21座，第3區，80樓C室： 睡房3浴室：浴室天花板裝設石膏板假天花及髹上乳膠漆及鋪砌紙皮石； 睡房5浴室：浴室天花板裝有鋼飾面、裝設石膏板假天花及髹上乳膠漆。</p> <p>第21座，第1區，91樓C室： 睡房4浴室 (睡房4左方): 浴室天花板裝設膠片燈箱、不銹鋼框、石膏板假天花及髹上乳膠漆。</p>
e. 廚房	<p>各單位的廚房牆身鋪砌白色微晶人造石及不銹鋼飾面至假天花底。下列單位除外：</p> <p>第20座，第1區，91樓A室： 廚房牆身鋪砌天然石材，裝有不銹鋼面板及木皮飾面至假天花底及部份裝設玻璃牆身。</p> <p>第20座，第1區，91樓C室： 廚房牆身鋪砌天然石材，裝有金屬飾條、玻璃及木皮飾面至假天花底。</p> <p>第20座，第1區，91樓D室： 廚房牆身鋪砌天然石材、木皮及裝有不銹鋼面板至假天花底。</p> <p>第21座，第3區79樓C室及第1區，91樓C室： 廚房牆身鋪砌天然石材，裝有不銹鋼面板至假天花底。</p> <p>第21座，第3區，80樓C室： 廚房牆身鋪砌天然石材，裝有不銹鋼面板及玻璃面板至假天花底。</p> <p>第21座，第1區，90樓A室： 廚房牆身鋪砌天然石材，裝有不銹鋼面板、鏡面及木皮飾面至假天花底。</p> <p>第21座，第1區，91樓A室： 廚房牆身鋪砌天然石材，裝有不銹鋼面板及木皮飾面至假天花底。</p> <p>各單位的廚房地台鋪砌天然石材。</p> <p>各單位的廚房天花板裝設金屬板及石膏板假天花。以下單位除外:</p> <p>第20座：第1區，91樓D室，第21座：第3區，80樓C室，第21座：第1區，90樓A室、91樓A室及C室： 廚房天花板裝設石膏板假天花及髹上乳膠漆。</p> <p>各單位的廚房灶台鋪砌無縫人造塑料。 以下單位除外： 第20座，第1區，91樓A室及C室： 廚房灶台鋪砌人造石。</p>

Fittings, finishes and appliances

裝置、裝修物料及設備

細項	描述	
3. 室內裝置		
a. 門	單位大門	實心木門配上木皮飾面，裝有金屬門鎖、防盜眼、門擋及隱蔽式氣鼓。下列單位除外: 第20座,第1區,91樓A室及C室: 木皮及金屬飾面實心木門，裝有門鎖、防盜眼、門擋及隱蔽式氣鼓。 第20座，第1區，91樓D室、第21座,第3區，79樓C室、80及81樓C室： 木皮飾面實心木門，裝有門鎖、隱藏式氣鼓及防盜眼。 第21座，第1區，91樓C室： 木皮飾面實心木門，裝有門鎖及隱藏式氣鼓。
	廚房門	實心木門配上木皮飾面，裝有金屬門手抽、門擋、隱蔽式氣鼓及鑲配玻璃。下列單位除外: 第20座,第1區,91樓A室: 玻璃掩門配金屬門框裝有地鉸鏈。 第20座,第1區,91樓C室: 木皮及金屬飾面實心木門，裝有手抽、門擋、隱蔽式氣鼓及鑲配玻璃。 第20座，第1區，91樓D室： 不銹鋼飾條及木皮飾面實心木門，裝有門鎖及隱藏式氣鼓。 第21座，第3區，79樓C室： 人造皮革飾面實心木門，裝有隱藏式氣鼓。 第21座，第3區，80樓C室: 雙掩玻璃門。 第21座,第1區,90樓A室： 木皮飾面實心木門，裝有隱藏式氣鼓及門擋。 第21座，第1區，91樓A室： 木皮飾面實心木門，裝有金屬門手抽、門擋、自動關門裝置及鑲配玻璃。 第21座，第1區，91樓C室： 木皮飾面實心木門，裝有門鎖及隱藏式氣鼓。
	睡房門	空心木門配上木皮飾面，裝有金屬門鎖及門擋。下列單位除外： 第20座第1區所有單位(91樓A室、C室及D室除外)： 實心木門配上木皮飾面，裝有金屬門鎖及門擋。 第20座，第1區所有A室(91樓A室除外)： 睡房1：裝有玻璃趟門配金屬門框。 第20座,第1區,91樓A室及C室： 實心木門配上木皮飾面及不銹鋼飾條，裝有門鎖及門擋。 第20座,第1區,91樓A室： 睡房4: 裝有玻璃趟門配金屬門框。 第20座，第1區，91樓D室： 睡房2、3及4：空心木門配上木皮飾面及金屬飾條，裝有門鎖。 第21座，第3區，79樓C室： 睡房1、2及3：木皮飾面空心木門，裝有門鎖及門擋； 睡房3出口門：實心木門連鏡面，裝有門鎖、隱藏式氣鼓及防盜眼； 睡房4：玻璃門連不銹鋼框，裝有門擋。 第21座，第3區，80樓C室： 睡房1及4：玻璃趟門； 睡房2及3：木皮飾面空心木門，裝有門鎖及門擋； 睡房5：木皮飾面空心木門，裝有門鎖。

細項	描述	
		第21座，第1區，90樓A室： 睡房1：鏡面玻璃趟門； 睡房2、3及4：木皮飾面空心木門，裝有門鎖及門擋。 第21座，第1區，91樓A室： 睡房2、3及4：木皮飾面空心木門，裝有門鎖及門擋。 第21座，第1區，91樓C室： 睡房1：玻璃趟門配上木腳線連不銹鋼飾條及玻璃趟門配以木框； 睡房2：木皮飾面空心木趟門，裝有門鎖； 睡房3：木皮飾面空心木門，裝有門鎖及門擋； 睡房4：木皮飾面連咕臣面板空心木門，裝有門鎖及門擋。
浴室門		空心木門配上木皮飾面，裝有金屬門鎖及門擋。下列單位除外： 第20座第1區所有單位 (91樓A室、C室及D室除外): 實心木門配上木皮飾面，裝有金屬門鎖及門擋。 第20座，第1區，91樓A室： 睡房1的浴室及睡房5的浴室：木皮及金屬飾條飾面實心木門，裝有門鎖及門擋。 浴室及書房內的浴室：木皮及金屬飾條飾面實心木門，裝有門鎖、門擋及木皮木百葉窗。 第20座,第1區,91樓C室: 木皮及金屬飾條飾面實心木門，裝有門鎖、門擋及木皮木百葉窗。 第20座，第1區，91樓D室： 睡房3及4浴室：玻璃門； 浴室：不銹鋼飾條配木皮飾面及鏡面空心木門，裝有門鎖、鋼百葉窗及隱藏式氣鼓； 書房浴室：不銹鋼飾條配鏡面空心木門，裝有門鎖及隱藏式氣鼓。 第21座,第3區,79樓C室: 睡房2浴室：雙掩玻璃門； 睡房4浴室：木皮飾面空心木門，裝有門鎖。浴室門配上木皮百葉窗； 浴室：木皮飾面空心木門，裝有門鎖。浴室門配上木皮百葉窗。 第21座，第3區，80樓C室： 睡房3浴室：木皮飾面空心木門，裝有門鎖； 睡房4浴室：木皮飾面空心木門，裝有門鎖及門擋。浴室門配上木皮百葉窗； 睡房5浴室：空心木趟門； 浴室：木皮飾面空心木門，裝有門鎖。浴室門配上木皮百葉窗； 書房浴室：玻璃趟門。 第21座，第1區,90樓A室： 睡房3及4浴室：玻璃門，裝有門擋； 浴室：木皮飾面空心木門，裝有門鎖。浴室門配上木皮百葉窗。 第21座,第1區,91樓A室: 睡房3及4浴室：玻璃門； 書房浴室：木皮飾面空心木門，裝有門鎖及門擋； 浴室：木皮飾面空心木門，裝有門鎖及門擋。浴室門配上木皮百葉窗。 第21座，第1區，91樓C室： 睡房3浴室：木皮飾面空心木門，裝有門鎖及門擋； 睡房4浴室：木皮及咕臣面板空心木趟門； 浴室：木皮飾面空心木門，裝有門鎖及門擋。浴室門配上木皮百葉窗； 書房浴室：木皮飾面空心木門，裝有門鎖及門擋。
後門		以下單位安裝木皮及金屬飾面實心木門，裝有門鎖、防盜眼、門擋及隱蔽式氣鼓： 第20座,第1區,91樓A室睡房1 第20座,第1區,91樓C室睡房3 以下單位安裝木皮及金屬飾條飾面實心木門，裝有門鎖、門擋及隱蔽式氣鼓： 第20座,第1區,91樓A室睡房5
客/飯廳洗手間		以下單位安裝木皮及金屬飾條飾面實心木門，裝有門鎖、門擋及木皮木百葉窗： 第20座,第1區,91樓A室
書房內的洗手間		以下單位安裝木皮及金屬飾面空心木趟門，裝有門鎖及木皮木百葉窗： 第20座,第1區,91樓C室
儲物室門		空心木門配上木皮飾面，裝有金屬門鎖。下列單位除外： 第20座第1區之所有單位 (91樓A室、C室及D室除外): 實心木門配上木皮飾面，裝有金屬門鎖。 第20座,第1區,91樓A室: 儲物室門 (廚房內的儲物室): 木皮及金屬飾條飾面空心木趟門，裝有門鎖。 儲物室門 (樓梯內的儲物室): 木皮及金屬飾條飾面空心木門，裝有門鎖及門擋。 第20座,第1區,91樓C室: 木皮及金屬飾條飾面空心木門，裝有門鎖及門擋。 第20座,第1區,91樓D室: 木條木皮飾面空心木門，裝有門鎖及隱藏式氣鼓。

Fittings, finishes and appliances

裝置、裝修物料及設備

細項	描述	
a. 門	儲物室門	第21座，第3區，79樓C室： 不銹鋼柵間隔趟牆。 第21座，第3區，80樓C室： 木皮飾面空心木門連鏡面，裝有門擋。 第21座，第1區，90樓A室： 木皮飾面空心木門，裝有門鎖及門擋。 第21座，第1區，91樓A室： 木皮飾面空心木趟門，裝有門鎖。 第21座，第1區，91樓C室： 木皮飾面空心木門，裝有門鎖及門擋。
	儲物室洗手間	磨沙玻璃門配金屬門框。下列單位除外： 第20座，第1區，91樓A室及C室： 金屬摺門配磨沙玻璃板，裝有門鎖及金屬百葉窗。 第20座，第1區，91樓D室： 玻璃門。 第21座，第3區，79樓C室： 玻璃趟門。 第21座，第3區，80樓C室： 木皮飾面空心木門，配上木皮百葉窗板及裝有門鎖。 第21座，第1區，90樓A室： 木皮飾面空心木門，裝有門鎖及門擋。 第21座，第1區，91樓A室： 木皮飾面及不銹鋼面空心木趟門。 第21座，第1區，91樓C室： 金屬摺門配玻璃面板。
	平台	以下單位安裝玻璃趟門配金屬門框及手抽，裝有金屬門鎖： 第20座，第1區，91樓A室、91樓C室及91樓D室； 第20座，第2區，12樓A室、12樓B室、37樓B室及38樓C室； 第21座，第1區，82樓A室、91樓A室、91樓B室及91樓C室； 第21座，第3區，80樓C室、81樓A室、81樓B室及81樓D室； 第21座，第6區，12樓A室、12樓B室、37樓B室及38樓C室。
b. 浴室	浴室配以天然石檯面; 鍍鉻洗手盆水龍頭、鍍鉻浴缸及花灑龍頭及花灑套裝; 搪瓷洗手盆、搪瓷坐廁連水箱、搪瓷面鑄鐵浴缸(長1500毫米 x 潤700毫米 x 高420毫米)。其他設備包括液晶體電視、熱水爐 (適用的單位請參考「設備說明」、隱藏式抽氣扇、鍍鉻毛巾掛桿、鍍鉻毛巾架、鍍鉻廁紙架及木製鏡櫃。部份浴室裝有多功能抽濕機 (顯示於機電裝置圖內)。 以下單位之睡房3的浴室裝有水晶天花燈飾： 第20座：第1區，67樓至90樓D室 第21座：第1區，15樓至91樓A室 第20座，第1區，91樓A室： 浴室及睡房1浴室：配以天然石檯面；拉絲黑金屬洗手盆水龍頭、浴缸龍頭、花灑龍頭、花灑套裝、毛巾架、毛巾掛勾及廁紙架；搪瓷洗手盆及坐廁；搪瓷鑄鐵浴缸 (長1400毫米 x 闊730毫米x 深410毫米)；木製鏡櫃。 睡房5浴室：配以天然石檯面；拉絲黑金屬洗手盆水龍頭、浴缸龍頭、花灑龍頭、花灑套裝、毛巾架、毛巾掛勾及廁紙架；搪瓷洗手盆及坐廁；搪瓷鑄鐵浴缸 (長1600毫米 x 闊700毫米x 深430毫米)。 書房內的浴室：配以天然石檯面；拉絲黑金屬洗手盆水龍頭、花灑龍頭、花灑套裝、毛巾架、毛巾掛勾及廁紙架；搪瓷洗手盆及坐廁；木製鏡櫃。 第20座，第1區，91樓C室： 浴室：配以天然石檯面；拉絲黑金屬洗手盆水龍頭、浴缸龍頭、花灑龍頭、花灑套裝、毛巾架、毛巾掛勾及廁紙架；搪瓷洗手盆及坐廁；搪瓷鑄鐵浴缸 (長1400毫米 x 闊730毫米x 深410毫米)；木製鏡櫃。	

細項	描述
	第20座，第1區，91樓D室： 睡房3浴室：配以天然石檯面；鍍鉻洗手盆水龍頭、浴缸龍頭、花灑龍頭及花灑套裝；搪瓷洗手盆、搪瓷坐廁連隱藏式水箱、纖維浴缸(長1810毫米 x 闊960毫米 x 深400毫米)。其他設備包括木製儲物櫃及隱藏式抽氣扇。 睡房4浴室：配以鍍鉻洗手盆水龍頭、花灑龍頭及花灑套裝；天然石材玻璃洗手盆及搪瓷坐廁連水箱。其他設備包括木製框鏡面； 書房浴室：配以天然石檯面；鍍鉻洗手盆水龍頭、花灑龍頭及花灑套裝；搪瓷洗手盆及搪瓷坐廁連水箱；浴室：配以天然石檯面；鍍鉻洗手盆水龍頭、花灑龍頭及花灑套裝；天然石材洗手盆及搪瓷坐廁連隱藏式水箱。 第21座，第3區，79樓C室： 睡房2浴室：配以天然石檯面；鍍鉻洗手盆水龍頭、浴缸龍頭，花灑龍頭及花灑套裝；搪瓷洗手盆，搪瓷坐廁連水箱、搪瓷鑄鐵浴缸(長1670毫米 x 闊770毫米 x 深410毫米)。其他設備包括木製鏡面儲物櫃配上高光焗漆內部飾面、鍍鉻毛巾架、鍍鉻毛巾掛捍、鍍鉻紙巾架； 睡房4浴室：配以天然石檯面；鍍鉻洗手盆水龍頭、花灑龍頭及花灑套裝；搪瓷洗手盆、搪瓷坐廁連水箱。其他設備包括木製鏡面儲物櫃配上高光焗漆內部飾面、鍍鉻毛巾架、鍍鉻毛巾掛捍、鍍鉻紙巾架； 浴室：配以天然石檯面；鍍鉻洗手盆水龍頭、花灑龍頭及花灑套裝；搪瓷洗手盆、搪瓷坐廁連水箱、搪瓷鑄鐵浴缸(長1450毫米 x 闊730毫米 x 深410毫米)。其他設備包括木製鏡面儲物櫃配上高光焗漆內部飾面、木製儲物櫃配上高光焗漆內部飾面、鍍鉻毛巾掛捍、鍍鉻紙巾架。 第21座，第3區，80樓C室： 睡房3浴室：配以天然石檯面；鍍鉻洗手盆水龍頭、浴缸龍頭、花灑龍頭及花灑套裝；天然石材洗手盆，搪瓷坐廁連隱藏式水箱、人造塑料浴缸 (長1500毫米 x 闊700毫米 x 深440毫米)。其他設備包括玻璃鏡面儲物櫃、鍍鉻毛巾掛捍、鍍鉻紙巾架； 睡房4浴室: 配以天然石檯面；鍍鉻洗手盆水龍頭、花灑龍頭及花灑套裝；搪瓷洗手盆及搪瓷坐廁連隱藏式水箱。其他設備包括木製鏡面儲物櫃、鍍鉻紙巾架； 睡房5浴室: 配以天然石檯面；鍍鉻洗手盆水龍頭、浴缸龍頭、花灑龍頭及花灑套裝；搪瓷洗手盆及搪瓷坐廁連水箱、人造塑料浴缸 (長2035毫米 x 闊995毫米 x 深370毫米)。其他設備包括木製儲物櫃配上鏡飾面、鍍鉻紙巾架； 書房浴室：配以天然石檯面；鍍鉻洗手盆水龍頭、花灑龍頭及花灑套裝；搪瓷洗手盆及搪瓷坐廁連水箱。其他設備包括鍍鉻紙巾架； 浴室：配以天然石檯面；鍍鉻洗手盆水龍頭、花灑龍頭及花灑套裝；人造塑料洗手盆及搪瓷坐廁連水箱。其他設備包括鍍鉻毛巾掛捍、鍍鉻紙巾架。 第21座，第1區，90樓A室： 睡房3浴室：配以天然石檯面；鍍鉻洗手盆水龍頭、浴缸龍頭、花灑龍頭及花灑套裝；天然石材洗手盆及搪瓷坐廁連隱藏式水箱、搪瓷鑄鐵浴缸 (長1380毫米 x 闊760毫米 x 深410毫米)。其他設備包括木製鏡面儲物櫃、鍍鉻毛巾掛捍、鍍鉻紙巾架； 睡房4浴室：配以天然石檯面；鍍鉻洗手盆水龍頭、浴缸龍頭、花灑龍頭及花灑套裝；搪瓷洗手盆及搪瓷坐廁連隱藏式水箱、搪瓷鑄鐵浴缸 (長1460毫米 x 闊700毫米 x 深440毫米)。其他設備包括木製鏡面儲物櫃、鍍鉻毛巾架、鍍鉻毛巾掛捍、鍍鉻紙巾架； 浴室：配以天然石檯面；鍍鉻洗手盆水龍頭、花灑龍頭及花灑套裝；搪瓷洗手盆及搪瓷坐廁連隱藏式水箱。其他設備包括木製鏡面儲物櫃、鍍鉻毛巾掛捍、鍍鉻紙巾架。 第21座，第1區，91樓A室： 睡房3浴室：配以天然石檯面；鍍鉻洗手盆水龍頭、浴缸龍頭、花灑龍頭及花灑套裝；搪瓷洗手盆及搪瓷坐廁連隱藏式水箱、搪瓷鑄鐵按摩浴缸 (長1460毫米 x 闊720毫米 x 深460毫米)。其他設備包括木製鏡面儲物櫃、鍍鉻毛巾架、鍍鉻毛巾掛捍、鍍鉻紙巾架； 睡房4浴室：配以天然石檯面；鍍鉻洗手盆水龍頭、浴缸龍頭、花灑龍頭及花灑套裝；搪瓷洗手盆及搪瓷坐廁連隱藏式水箱；搪瓷鑄鐵浴缸 (長1350毫米 x 闊650毫米 x 深420毫米)。其他設備包括木製鏡面儲物櫃、鍍鉻毛巾架、鍍鉻毛巾掛捍、鍍鉻紙巾架； 書房浴室：配以鍍鉻洗手盆水龍頭、花灑龍頭及花灑套裝；企身式搪瓷洗手盆及搪瓷坐廁連隱藏式水箱。其他設備包括木製鏡面儲物櫃、鍍鉻毛巾掛捍、鍍鉻紙巾架； 浴室：配以天然石檯面；鍍鉻洗手盆水龍頭、花灑龍頭及花灑套裝；搪瓷洗手盆及搪瓷坐廁連隱藏式水箱。其他設備包括木製鏡面儲物櫃、鍍鉻毛巾掛捍、鍍鉻紙巾架。 第21座，第1區，91樓C室： 睡房3浴室：配以天然石檯面；鍍鉻洗手盆水龍頭、浴缸龍頭、花灑龍頭及花灑套裝；搪瓷洗手盆及搪瓷坐廁連水箱、搪瓷鑄鐵浴缸 (長1600毫米 x 闊740毫米 x 深435毫米)。其他設備包括鏡面木製儲物櫃配上高光焗漆飾面、木製儲物櫃配上高光焗漆飾面、鍍鉻毛巾掛捍； 睡房4浴室(睡房4右方): 配以天然石檯面；鍍鉻洗手盆水龍頭、花灑龍頭及花灑套裝；搪瓷洗手盆及搪瓷坐廁連隱藏式水箱。其他設備包括鏡面木製儲物櫃配上高光焗漆飾面、木製儲物櫃配上高光焗漆飾面、鍍鉻毛巾掛捍； 睡房4浴室(睡房4左方)：配以天然石檯面；鍍鉻洗手盆水龍頭、浴缸龍頭、花灑龍頭及花灑套裝；搪瓷洗手盆及搪瓷坐廁連隱藏式水箱；人造塑料按摩池 (長2050毫米 x 闊1130毫米 x 深470毫米)；其他設備包括玻璃鏡面儲物櫃、木製儲物櫃配上高光焗漆及織布咕臣飾面、鍍鉻毛巾掛捍；

Fittings, finishes and appliances

裝置、裝修物料及設備

細項	描述
b. 浴室	書房浴室：配以鍍鉻洗手盆水龍頭、花灑龍頭及花灑套裝；企身式搪瓷洗手盆及搪瓷坐廁連隱藏式水箱。其他設備包括玻璃鏡面儲物櫃、鍍鉻毛巾掛桿； 浴室：配以天然石檯面；鍍鉻洗手盆水龍頭、花灑龍頭及花灑套裝；玻璃洗手盆及搪瓷坐廁配上隱藏式水箱。其他設備包括鏡面木製儲物櫃配上高光焗漆飾面、木製儲物櫃配上高光焗漆飾面、鍍鉻毛巾掛桿。 部份浴室(如平面圖顯示)設有淋浴間，地面鋪砌天然石及附設強化玻璃門及間隔。 由間接供水系統供水。冷水供水系統採用銅喉，熱水供水系統採用附有隔熱層之銅喉。 設備類型請參考「設備說明」。
c. 廚房	以下單位之廚房備有木製櫥櫃組合配以玻璃飾面門板： 第20座，第1區，87樓A室、88樓A室、89樓A室及90樓A室 以下單位之廚房備有木製櫥櫃組合配以高光焗漆及鋁質飾面門板： 第20座，第1區各單位（87樓A室、88樓A室、89樓A室、90樓A室除外） 第20座，第2區各樓層之A室及B室，第20座第2區38樓C室，第21座第1區各單位， 第21座第2區各單位，第21座第3區各單位，第21座第6區之各樓層之A室及B室，第21座第6區38樓C室 以下單位之廚房備有木製櫥櫃組合配以啞面焗漆及木飾面門板： 第20座，第1區，91樓A室 以下單位之廚房備有木製櫥櫃組合，配以高光焗漆及木飾面門板： 第20座，第1區，91樓C室 以下單位之廚房備有木製櫥櫃組合配以高光焗漆門板： 第20座，第2區12樓至37樓各樓層之C室及D室，第20座第2區16樓至38樓各樓層之E室， 第21座第5區各單位，第21座第6區12樓至37樓各樓層之C室及D室，第21座第6區15樓至38樓各樓層之E室 以下單位之廚房備有木製櫥櫃組合配以高光焗漆門板及複合層壓門板： 第20座：第1區，91樓D室； 第21座：第3區，79樓C室及80樓C室。 以下單位之廚房備有木製櫥櫃組合配以複合層壓門板： 第21座：第1區，90樓A室、91樓A室及91樓C室 冷水供水系統採用銅喉，熱水供水系統採用附有隔熱層之銅喉。設備類型請參考「設備說明」。 廚房均裝有不銹鋼洗滌盆及鍍鉻冷熱水龍頭。
d. 睡房	以下單位睡房裝有嵌入式木衣櫃： 第20座第1區67樓至90樓各樓層之A室睡房4、B室睡房2、C室睡房3及D室睡房3； 第20座，第1區，91樓A室睡房1及睡房5； 第20座，第1區，91樓C室睡房3； 第20座，第1區，91樓D室睡房3； 第21座，第3區，79樓C室睡房2； 第21座，第3區，80樓C室睡房1 及 4； 第21座，第1區，90樓A室睡房3； 第21座，第1區，91樓A室睡房2、3 及4。
e. 電話	客廳 / 飯廳及睡房均裝有電話插座。有關接駁點的位置及數量請參考「機電裝置圖/機電裝置數量說明」。
f. 天線	客廳 / 飯廳及睡房均裝有公用電視 / 收音機天線 / 衛星電視插座。有關接駁點的位置及數量請參考「機電裝置圖/機電裝置數量說明」。

細項	描述	
g. 電力裝置	裝有隱蔽導管。提供配有微型斷路器配電箱的單相/三相電源。裝有天花燈位、電插座、燈掣、冷氣機開關掣、熱水爐開關掣及抽氣扇開關。客廳及睡房裝設有窗簾電源插座。 有關電插座及空調機接駁點的位置及數量請參考「機電裝置圖/機電裝置數量說明」。	
h. 氣體供應	裝有煤氣喉接駁煤氣煮食爐(第21座：第5區，K室除外) 及煤氣熱水爐(第21座：第1區，87樓E室及90樓E室除外)，並裝有獨立煤氣錶於單位之廚房內。有關煤氣錶位置請參考「機電裝置圖/機電裝置數量說明」。	
i. 洗衣機接駁點	洗衣機入水及排水位設於廚房/儲物室內。有關接駁點的位置請參考「機電裝置圖/機電裝置數量說明」。	
j. 供水	冷水喉採用隱藏式及外露式銅喉 [#] 。熱水喉採用附有隔熱層的隱藏式及外露式銅喉 [#] 。有熱水供應。	
4. 雜項		
a. 升降機	第21座	共設有13部"日立"牌客用升降機及3部"日立"牌載貨升降機，詳見下列為可達到之樓層： 3部客用升降機(型號HVF3)可到達第1區；大堂樓層、67樓至73樓、75樓至83樓、85樓至91樓； 3部客用升降機(型號HVF3)可到達第2區；大堂樓層、15樓至23樓、25樓至33樓、35樓至38樓、50樓至52樓、55樓至57樓、59樓至63樓； 2部客用升降機(型號UVF)可到達第3區；大堂樓層、67樓至73樓、75樓至81樓； 3部客用升降機(型號HVF3)可到達第5區；大堂樓層、15樓至23樓、25樓至33樓、35樓至38樓、50樓至52樓、55樓至57樓、59樓至63樓； 2部客用升降機(型號HVF3)可到達第6區；大堂樓層、12樓、15樓至23樓、25樓至33樓、35樓至38樓； 1部載貨升降機(型號為HVF3)可到達第1，2，3及5 區 B1樓，G樓，1樓-3樓，大堂樓層，CH1樓，CH2樓，CH3樓，15樓-23樓，25樓-33樓，35樓-38樓，50樓至52樓，55樓至57樓，59樓至63樓，67樓至73樓，75樓至83樓及85樓至91樓； 1部載貨升降機(型號為UVF4)可到達第1，2，3及5區 B1樓，G樓，M樓，1樓至3樓，大堂樓層，CH1樓，CH2樓，CH3樓，8樓，12樓，15樓至23樓，25樓至33樓，35樓至40樓，50樓至52樓，55樓至57樓，59樓至63樓，65樓至73樓，75樓至83樓及85樓至91樓；及 1部載貨升降機(型號VF5)可到達第6區3樓，大堂樓層，CH1樓，CH2樓，CH3樓，8樓，12樓，15樓至23樓，25樓至33樓及35樓至38樓
	第20座	共設有5部"富士達"客用升降機(型號VVVF)及2部"富士達"載貨升降機(型號VVVF)，詳見下列為可達到之樓層： 3部客用升降機可到達第 1 區 (大堂樓層，67樓至73樓，75樓至83樓，85樓至91樓)； 2部客用升降機可到達第 2 區 (大堂樓層，12樓，15樓至23樓，25樓至33樓，35樓至38樓)； 1部載貨升降機可到達第1區B1樓，G樓，3樓，大堂樓層，6樓-8樓，U8樓，16樓至23樓，25樓至33樓，35樓至38樓，50樓至52樓，55樓至57樓，59樓至63樓，66樓至73樓，75樓至83樓 及 85樓至91樓；及 1部載貨升降機可到達第2區3樓，大堂樓層，6樓-8樓，U8樓，12樓，15樓至23樓，25樓至32樓，33樓及35樓至39樓
	大堂樓層及停車場	設有1部"富士達"客用升降機(型號VVVF)到達3樓停車場及大堂樓層。 另有2部"日立"牌客用升降機(形號VF5)到達1樓、3樓停車場及大堂樓層。
b. 信箱	不銹鋼信箱。	
c. 垃圾收集	每層服務式公寓及住宅樓層均設有垃圾收集房。收集後的垃圾會在位於地庫1樓的垃圾及物料回收房作中央處理。	
d. 水錶、電錶及氣體錶	每戶於單位廚房內裝有獨立煤氣錶。另每層服務式公寓及住宅之錶房均裝有每戶專用之獨立水錶及電錶。	

5. 保安設施
住客入口大堂、停車場大堂、升降機、會所及大堂樓層公用位置均設有閉路電視系統。各服務式公寓及住宅單位設有彩色視像對講機，連接大堂樓層住客入口之訪客對講系統及大堂禮賓部。各住客出入口均裝置備有智能咭及密碼鎖之訪客對講系統。於3樓停車場出入口均設有出入控制閘。 主人房備有防盜警鐘按鈕，連接3樓保安控制室。

6. 設備
在「設備說明」表示。

就以上列表所指明的期數中的第4(a)及6細項，賣方承諾如期數中沒有安裝指明的品牌名稱或產品型號的升降機或設備，便會安裝品質相若的升降機或設備。

(This page is left blank intentionally. 此頁保留空白)

Fittings, finishes and appliances

裝置、裝修物料及設備

Appliances Schedule 設備說明

				Flat A, 91/F, Zone 1, Tower 20 第20座第1區 91樓A室	Flat C, 91/F, Zone 1, Tower 20 第20座第1區 91樓C室	Flat D, 91/F, Zone 1, Tower 20 第20座第1區 91樓D室	Flat A, 12/F, Zone 2, Tower 20 第20座第2區 12樓A室	Flat B, 37/F, Zone 2, Tower 20 第20座第2區 37樓B室	Flat B, 12/F, Zone 2, Tower 20 第20座第2區 12樓B室	Flat C, 38/F, Zone 2, Tower 20 第20座第2區 38樓C室
Location 位置	Appliance 設備		Brand 品牌	Model No. 型號						
Living/Dining Room/ Bedroom/Store/ Kitchen/Bathroom 客飯廳/睡房/ 儲物室/廚房及 浴室	Water Cooled Split Type Air-conditioner 水冷分體式冷氣機	Indoor Unit 室內機	Daikin 大金	FXDP71QPVC FXDP56QPVC FXDP45QPVC FXDP36QPVC FXDP28QPVC FXAQ25AVM	FXDP71QPVC FXDP45QPVC FXDP36QPVC FXDP28QPVC FXAQ25AVM	MCC015TP MCC020TP MCC025TP MCC030TP				
		Outdoor Unit 室外機		RWXYQ6BY1C RWXYQ10BY1 RWXYQ10BY1 RWXYQ10BY1	RWXY8BY1C RWXYQ6BY1C RWXYQ8BY1C	MWSC015DRP MWSC020DRP MWSC025DRP MWSC030DRP				
	Air Cooled Split Type Air-conditioner 風冷分體式冷氣機	Indoor Unit 室內機	Daikin 大金				FDXS35CVMA			
		Outdoor Unit 室外機					RXS35EBVMA			
		Indoor Unit 室內機	Panasonic 樂聲牌				CS-E12JD4H CS-E18JD4H CS-E23JD4H CS-YE9MKA	CS-E12JD4H CS-E18JD4H CS-YE9MKA	CS-E18JD4H CS-YE9MKA	CS-E12JD4H CS-YE9MKA CS-YE18MKA
		Outdoor Unit 室外機					CU-E12JBH CU-E18JBH CU-E23JBH CU-YE9MKA	CU-E12JBH CU-E18JBH CU-YE9MKA	CU-E18JBH CU-YE9MKA	CU-E12JBH CU-YE9MKA CU-YE18MKA
	MasterCool Refrigerator & Freezer MasterCool 雪櫃及冰箱		Miele	K2801Vi F2411Vi						
	2-in-1 Induction hob with extractor 二合一電磁爐連抽氣裝置		Miele	KMDA7476FL						
	Oven 焗爐		Miele	H2890B						
	Steam combination oven 蒸焗爐		Miele	DGC7440						
	MasterCool Wine conditioning unit MasterCool 酒櫃		Miele	KWT2611Vi						
	Dishwasher 洗碗碟機		Miele	G7150CSCVi						

Fittings, finishes and appliances

裝置、裝修物料及設備

Appliances Schedule 設備說明

			Flat A, 91/F, Zone 1, Tower 20 第20座第1區 91樓A室	Flat C, 91/F, Zone 1, Tower 20 第20座第1區 91樓C室	Flat D, 91/F, Zone 1, Tower 20 第20座第1區 91樓D室	Flat A, 12/F, Zone 2, Tower 20 第20座第2區 12樓A室	Flat B, 37/F, Zone 2, Tower 20 第20座第2區 37樓B室	Flat B, 12/F, Zone 2, Tower 20 第20座第2區 12樓B室	Flat C, 38/F, Zone 2, Tower 20 第20座第2區 38樓C室
Location 位置	Appliance 設備	Brand 品牌	Model No. 型號						
Bedroom1 睡房1	Cosmetics Cabinet with Refrigerator 化妝品雪櫃	Biszet	B7						
Bedroom3 睡房3				B7					
Bedroom5 睡房5			B7						
Kitchen 廚房	Gas Hob (Single-burner) 煤氣煮食爐（單爐頭）	Miele			KM-416-3	CS1018G	KM-416-3	CS1018G	KM-416-3
	Gas hob (Wok burner) 炒鑊氣體煮食爐	Miele	CS1018G	CS1018G	KM-416-3	CS1018G	KM-416-3	CS1018G	KM-416-3
	Gas Hob (Double-burner) 煤氣煮食爐（雙爐頭）	Miele			KM-405-3	CS1013-1	KM-405-3	CS1013-1	KM-405-3
	Gas hob (2 burners) 煤氣煮食爐（雙爐頭）	Miele	CS1013-1	CS1013-1	KM-405-3	CS1013-1	KM-405-3	CS1013-1	KM-405-3
	Induction Hob (2-zones) 雙頭電磁爐	Miele	CS1212-1	CS1212-1					
	Electric BBQ Grill 電燒烤爐	Miele			KM-411-3	CS1312BG	KM-411-3	CS1312BG	KM-411-3
	Cooker Hood 抽油煙機	Miele	DA 4298W	DA 4298W	DA422-4	DA422	DA422	DA422	DA422
	Exhaust Fan (Mounted above false ceiling) 抽氣扇（置於假天花上）	Panasonic 樂聲牌	FV-04NU1H	FV-04NU1H	FV-20NS1H	FV-18NS1H	FV-20NS1H	FV-20NS1H	FV-20NS1H
	Gas Water Heater 煤氣熱水爐	TGC		TRJW162TFQL (for Bathroom of Bedroom 4) （供應睡房4的浴室）			NJW160TFQL (for Bathroom) （供應浴室）	NJW160TFQL (for Bathroom) （供應浴室）	NJW160TFQL (for Bathroom) （供應浴室）
	Microwave Oven 微波爐	Miele			M8261	M8261	M8261	M8261	M8261
	Oven 焗爐	Miele		H2890B	H4900B	H4900B	H4900B	H4900B	H4900B
	Steam combination oven 蒸焗爐	Miele		DGC7440	DG 4060	DG 4060	DG 4060	DG 4060	DG 4060
	Wine Cooler 紅酒冷藏櫃	Miele				KWT 4154 UG			
	Wine conditioning unit 酒櫃	Miele		KWT 6321 UG					
	Washer / Dryer 洗衣乾衣機	Siemens 西門子	WK14D321HK	WK14D321HK	WT 2679 I WPM	WT 2679 I WPM	WT 2679 I WPM	WT 2679 I WPM	WT 2679 I WPM
	Refrigerator 雪櫃	Subzero		I650	I650	I650G	I650G	I650G	I650G
	Fridge-freezer 雪櫃連冰箱	Miele	KFNS7734D						
	Dishwasher 洗碗碟機	Miele				G1630 SCI			
	LCD TV in Kitchen 廚房液晶體電視	JSA				B51002D	B51002D	B51002D	B51002D
	Electric Water Heater 電熱水爐	Stiebel Eltron 斯寶亞創	(Supplied from Toilet inside Store) （由儲物室洗手間供應）	(Supplied from Toilet inside Store) （由儲物室洗手間供應）	(Supplied from Toilet inside Store) （由儲物室洗手間供應）	DT 6	(Supplied from Toilet inside Store) （由儲物室洗手間供應）	(Supplied from Toilet inside Store) （由儲物室洗手間供應）	DT 6

Fittings, finishes and appliances

裝置、裝修物料及設備

Appliances Schedule 設備說明

			Flat A, 91/F, Zone 1, Tower 20 第20座第1區 91樓A室	Flat C, 91/F, Zone 1, Tower 20 第20座第1區 91樓C室	Flat D, 91/F, Zone 1, Tower 20 第20座第1區 91樓D室	Flat A, 12/F, Zone 2, Tower 20 第20座第2區 12樓A室	Flat B, 37/F, Zone 2, Tower 20 第20座第2區 37樓B室	Flat B, 12/F, Zone 2, Tower 20 第20座第2區 12樓B室	Flat C, 38/F, Zone 2, Tower 20 第20座第2區 38樓C室
Location 位置	Appliance 設備	Brand 品牌	Model No. 型號						
Bathroom 浴室	LCD TV in Bathroom 浴室液晶體電視	COMEMON				TM102W	TM102W	TM102W	TM102W
	Gas Water Heater 煤氣熱水爐	TGC					(Supplied from Kitchen) (由廚房供應)	(Supplied from Kitchen) (由廚房供應)	(Supplied from Kitchen) (由廚房供應)
	Electric Water Heater 電熱水爐	Stiebel Eltron 斯寶亞創	DHE 27	DHE 21 DHE 27 (for Bathroom of Bedroom 3) (供應睡房3的浴室)	DHE 21	DHE 21			
	Mirror Defroster 鏡面除霧器	BMB			HKA-179A	HKA-179A	HKA-179A	HKA-179A	HKA-179A
	Ventilation Fan 抽氣扇	Panasonic 樂聲牌	FV-04NU1H	FV-02NU1H	FV-15NS1H	FV-15NS1H	FV-15NS1H	FV-15NS1H	FV-15NS1H
	Multifunctional Dehumidifier 多功能抽濕機	Cold Magic 高美	CDH-22R2B	CDH-22R2B		CDH22R2	CDH22R2	CDH22R2	CDH22R2
Bathroom inside Bedroom 睡房內的浴室			Bathroom of Bedroom 1 睡房1的浴室	Bathroom of Bedroom 4 睡房4的浴室	Bathroom of Bedroom 4 睡房4的浴室	Bathroom of Bedroom 1 睡房1的浴室	Bathroom of Bedroom 4 睡房4的浴室		
	LCD TV in Bathroom 浴室液晶體電視	COMEMON				TM102W	TM102W		
	Floor Heating System 地暖系統	Danfoss	Touch						
	Gas Water Heater 煤氣熱水爐	TGC		(Supplied from Kitchen) (由廚房供應)					
	Electric Water Heater 電熱水爐	Stiebel Eltron 斯寶亞創	DHE 27		DHE 21	DHE 27	DHE 27		
	Mirror Defroster 鏡面除霧器	BMB			HKA-179A	HKA-179A	HKA-179A		
	Ventilation Fan 抽氣扇	Panasonic 樂聲牌	FV-04NU1H	FV-02NU1H	FV-15NS1H	FV-18NS1H	FV-15NS1H		
	Multifunctional Dehumidifier 多功能抽濕機	Cold Magic 高美	CDH-22R2B	CDH-22R2B					

Fittings, finishes and appliances

裝置、裝修物料及設備

Appliances Schedule 設備說明

			Flat A, 91/F, Zone 1, Tower 20 第20座第1區 91樓A室	Flat C, 91/F, Zone 1, Tower 20 第20座第1區 91樓C室	Flat D, 91/F, Zone 1, Tower 20 第20座第1區 91樓D室	Flat A, 12/F, Zone 2, Tower 20 第20座第2區 12樓A室	Flat B, 37/F, Zone 2, Tower 20 第20座第2區 37樓B室	Flat B, 12/F, Zone 2, Tower 20 第20座第2區 12樓B室	Flat C, 38/F, Zone 2, Tower 20 第20座第2區 38樓C室
Location 位置	Appliance 設備	Brand 品牌	Model No. 型號						
Bathroom inside Bedroom 睡房內的浴室						Bathroom of Bedroom 4 睡房4的浴室			
	LCD TV in Bathroom 浴室液晶體電視	COMEMON				TM102W			
	Electric Water Heater 電熱水爐	Stiebel Eltron 斯寶亞創				DHE 27			
	Mirror Defroster 鏡面除霧器	BMB				HKA-179A			
	Ventilation Fan 抽氣扇	Panasonic 樂聲牌				FV-18NS1H			
Bathroom inside Bedroom 睡房內的浴室			Bathroom of Bedroom 5 睡房5的浴室	Bathroom of Bedroom 3 睡房3的浴室	Bathroom of Bedroom 3 睡房3的浴室	Bathroom of Bedroom 2 睡房2的浴室	Bathroom of Bedroom 1 睡房1的浴室	Bathroom of Bedroom 1 睡房1的浴室	Bathroom of Bedroom 3 睡房3的浴室
	LCD TV in Bathroom 浴室液晶體電視	Toshiba 東芝				20V300H	20V300H	20V300H	20V300H
	Floor Heating System 地暖系統	Danfoss	Touch	Touch					
	Electric Water Heater 電熱水爐	Stiebel Eltron 斯寶亞創	DHE 27	(Supplied from Bathroom) (由浴室供應)	DHE 27	DHE 27	DHE 27	DHE 27	DHE 27
	Mirror Defroster 鏡面除霧器	BMB	HKA-179A	HKA-179A	HKA-179A	HKA-179A	HKA-179A	HKA-179A	HKA-179A
	Multifunctional Dehumidfier 多功能抽濕機	Cold Magic 高美	CDH-22R2B	CDH-22R2B					
	Ventilation Fan 抽氣扇	Panasonic 樂聲牌	FV-05NU1H	FV-04NU1H	FV-18NS1H:	FV-18NS1H	FV-18NS1H	FV-18NS1H	FV-18NS1H

Fittings, finishes and appliances

裝置、裝修物料及設備

Appliances Schedule 設備說明

			Flat A, 91/F, Zone 1, Tower 20 第20座第1區 91樓A室	Flat C, 91/F, Zone 1, Tower 20 第20座第1區 91樓C室	Flat D, 91/F, Zone 1, Tower 20 第20座第1區 91樓D室	Flat A, 12/F, Zone 2, Tower 20 第20座第2區 12樓A室	Flat B, 37/F, Zone 2, Tower 20 第20座第2區 37樓B室	Flat B, 12/F, Zone 2, Tower 20 第20座第2區 12樓B室	Flat C, 38/F, Zone 2, Tower 20 第20座第2區 38樓C室
Location 位置	Appliance 設備	Brand 品牌	Model No. 型號						
Bathroom inside Study 書房內的浴室	Electric Water Heater 電熱水爐	Stiebel Eltron 斯寶亞創	DHE 21		DHE 21				
	Thermo Ventilator 浴室寶	Panasonic 樂聲牌	FV-40BEN4H						
	Ventilation Fan 抽氣扇	Panasonic 樂聲牌			FV-12NS1H				
Toilet inside Study 書房內的洗手間	Electric Water Heater 電熱水爐	Stiebel Eltron 斯寶亞創		DHE 27					
	Ventilation Fan 抽氣扇	Panasonic 樂聲牌		FV-02NU1H					
Toilet inside Living/Dining Room 客飯廳的洗手間	Electric Water Heater 電熱水爐	Stiebel Eltron 斯寶亞創	DHM6						
	Ventilation Fan 抽氣扇	Panasonic 樂聲牌	FV-02NU1H						
Toilet inside Store 儲物室洗手間	Electric Water Heater 電熱水爐	Stiebel Eltron 斯寶亞創	HDB-E-21S	HDB-E-21S	HDB 21	HDB 21	HDB 21	HDB 21	HDB 21
	Ventilation Fan 抽氣扇	Panasonic 樂聲牌	FV-02NU1H	FV-02NU1H	FV-12NS1H	FV-12NS1H	FV-12NS1H	FV-12NS1H	FV-12NS1H

Fittings, finishes and appliances

裝置、裝修物料及設備

Appliances Schedule 設備說明

				Flat A, 90/F, Zone 1, Tower 20 第20座第1區90樓A室	Flat A, 87/F-89/F, Zone 1, Tower 20 第20座第1區87至89樓A室	Flat A, 67/F-73/F, 75/F-83/F and 85/F-86/F, Zone 1, Tower 20 第20座第1區67至73樓， 75至83樓及 85至86樓A室	Flat B, 67/F-73/F, 75/F-83/F and 85/F-90/F, Zone 1, Tower 20 第20座第1區67至73樓， 75至83樓及 85至90樓B室	Flat C, 67/F-73/F, 75/F-83/F and 85/F-90/F, Zone 1, Tower 20 第20座第1區67至73樓， 75至83樓及 85至90樓C室	Flat D, 67/F-73/F, 75/F-83/F and 85/F-90/F, Zone 1, Tower 20 第20座第1區67至73樓， 75至83樓及 85至90樓D室	Flat A, 16/F-23/F, 25/F-33/F and 35/F-36/F, Zone 2, Tower 20 第20座第2區16至23樓， 25至33樓及 35至36樓A室	Flat B, 38/F, Zone 2, Tower 20 第20座第2區38樓B室	Flat B, 15/F-23/F, 25/F-33/F and 35/F-36/F, Zone 2, Tower 20 第20座第2區15至23樓， 25至33樓及 35至36樓B室	Flat C, 12/F, 15/F-23/F, 25/F-33/F, and 35/F-37/F, Zone 2, Tower 20 第20座第2區12樓， 15至23樓， 25至33樓及 35至37樓C室	Flat D, 12/F, 15/F-23/F, 25/F-33/F, and 35/F-37/F, Zone 2, Tower 20 第20座第2區12樓， 15至23樓， 25至33樓及 35至37樓D室	Flat E, 16/F-23/F, 25/F-33/F and 35/F-38/F, Zone 2, Tower 20 第20座第2區16至23樓， 25至33樓及 35至38樓E室
Location 位置	Appliance 設備		Brand 品牌	Model No. 型號											
Living/Dining Room/ Bedroom/Store/ Kitchen/Bathroom 客飯廳、睡房、 儲物室、廚房及 浴室	Water Cooled Split Type Air-conditioner 水冷分體式冷氣機	Indoor Unit 室內機	McQuay 麥克維爾	MCC015TP MCC025TP MCC030TP M5WM10JR M5WM15JR M5WM20JR	MCC015TP MCC025TP MCC030TP M5WM10JR M5WM15JR M5WM20JR	MCC025TP MCC030TP M5WM10JR M5WM15JR M5WM20JR	MCC015TP MCC020TP MCC030TP M5WM10JR	MCC015TP MCC025TP M5WM10JR M5WM20JR	MCC015TP MCC020TP MCC025TP M5WM10JR M5WM20JR						
		Outdoor Unit 室外機		MWSC015DRP MWSC025DRP MWSC030DRP MWSC010DRP MWSC020DRP	MWSC015DRP MWSC025DRP MWSC030DRP MWSC010DRP MWSC020DRP	MWSC025DRP MWSC030DRP MWSC010DRP MWSC015DRP MWSC020DRP	MWSC015DRP MWSC020DRP MWSC030DRP MWSC010DRP	MWSC015DRP MWSC025DRP MWSC010DRP MWSC020DRP	MWSC015DRP MWSC020DRP MWSC025DRP MWSC010DRP						
	Air cooled split type Air-conditioner 風冷分體式冷氣機	Indoor Unit 室內機	Daikin 大金												
		Outdoor Unit 室外機													
		Indoor Unit 室內機	Panasonic 樂聲牌							CS-E23JD4H CS-E18JD4H CS-YE9MKA	CS-E12JD4H CS-E18JD4H CS-YE9MKA	CS-E12JD4H CS-E18JD4H CS-YE9MKA	CS-YE9MKA CS-YE18MKA	CS-YE12MKA CS-YE18MKA	CS-YE12MKA CS-YE18MKA
		Outdoor Unit 室外機								CU-E23JBH CU-E18JBH CU-YE9MKA	CU-E12JBH CU-E18JBH CU-YE9MKA	CU-E12JBH CU-E18JBH CU-YE9MKA	CU-YE9MKA CU-YE18MKA	CU-YE12MKA CU-YE18MKA	CU-YE12MKA CU-YE18MKA
	Exhaust Hood 抽油煙機		Miele	DA422-4	DA422-6										
	Refrigerator 雪櫃		Subzero	ICBBI-42 S/O	ICBBI-42 S/O										
Living/Dining Room 客飯廳	Induction Hob (Double-burner) 電磁爐（雙爐頭）		Miele	KM 6352	KM 6358										
	Coffee Maker 咖啡機		Miele	CVA6401	CVA6401										
	Microwave Oven 微波爐		Miele	H6400BM	H6400BM										
	Oven 焗爐		Miele	H6890BP	H6890BP										
	Wine Cooler 紅酒冷藏櫃		Miele	KWT 4154 UG-I	KWT 4154 UG-I										
	Ventilation Fan 抽氣扇		Ostberg	REF140A	REF140A										
	Ventilation Fan 抽氣扇		Panasonic 樂聲牌												

Fittings, finishes and appliances

裝置、裝修物料及設備

Appliances Schedule 設備說明

			Flat A, 90/F, Zone 1, Tower 20 第20座第1區90樓A室	Flat A, 87/F-89/F, Zone 1, Tower 20 第20座第1區87至89樓A室	Flat A, 67/F-73/F, 75/F-83/F and 85/F-86/F, Zone 1, Tower 20 第20座第1區67至73樓， 75至83樓及 85至86樓A室	Flat B, 67/F-73/F, 75/F-83/F and 85/F-90/F, Zone 1, Tower 20 第20座第1區67至73樓， 75至83樓及 85至90樓B室	Flat C, 67/F-73/F, 75/F-83/F and 85/F-90/F, Zone 1, Tower 20 第20座第1區67至73樓， 75至83樓及 85至90樓C室	Flat D, 67/F-73/F, 75/F-83/F and 85/F-90/F, Zone 1, Tower 20 第20座第1區67至73樓， 75至83樓及 85至90樓D室	Flat A, 16/F-23/F, 25/F-33/F and 35/F-36/F, Zone 2, Tower 20 第20座第2區16至23樓， 25至33樓及 35至36樓A室	Flat B, 38/F, Zone 2, Tower 20 第20座第2區38樓B室	Flat B, 15/F-23/F, 25/F-33/F and 35/F-36/F, Zone 2, Tower 20 第20座第2區15至23樓， 25至33樓及 35至36樓B室	Flat C, 12/F, 15/F-23/F, 25/F-33/F, and 35/F-37/F, Zone 2, Tower 20 第20座第2區12樓， 15至23樓， 25至33樓及 35至37樓C室	Flat D, 12/F, 15/F-23/F, 25/F-33/F, and 35/F-37/F, Zone 2, Tower 20 第20座第2區12樓， 15至23樓， 25至33樓及 35至37樓D室	Flat E, 16/F-23/F, 25/F-33/F and 35/F-38/F, Zone 2, Tower 20 第20座第2區16至23樓， 25至33樓及 35至38樓E室
Location 位置	Appliance 設備	Brand 品牌	Model No. 型號											
Kitchen 廚房	Gas Hob (Single-burner) 煤氣煮食爐（單爐頭）	Miele	CS1018	CS1018	CS1018	CS1018	CS1018	CS1018	KM-416-3	KM-416-3	KM-416-3	KM-416-3	KM-416-3	KM-416-3
	Gas Hob (Double-burner) 煤氣煮食爐（雙爐頭）	Miele	CS1013-1	CS1013-1	CS1013-1	CS1013-1	CS1013-1	CS1013-1	KM-405-3	KM-405-3	KM-405-3	KM-405-3	KM-405-3	KM-405-3
	Electric BBQ Grill 電燒烤爐	Miele	CS1312BG	CS1312BG	CS1312BG		CS1312BG	CS1312BG		KM-411-3	KM-411-3			
	Exhaust Hood 抽油煙機	Miele	DA422-4	DA422-6	DA422-6	DA429-6	DA422-6	DA422-6	DA439	DA422	DA422	DA439	DA439	DA439
	Exhaust Fan (Mounted above false ceiling) 抽氣扇（置於假天花上）	Ostberg												
	Exhaust Fan (Mounted above false ceiling) 抽氣扇（置於假天花上）	Panasonic 樂聲牌	FV-20NS1H	FV-20NS1H	FV-20NS1H	FV-20NS1H	FV-20NS1H	FV-20NS1H	FV-20NS1H	FV-20NS1H	FV-20NS1H	FV-20NS1H	FV-20NS1H	FV-20NS1H
	Gas Water Heater 煤氣熱水爐	TGC				NJW160TFQL (for Bathroom) （供應浴室）	NJW160TFQL (for Bathroom of Bedroom 4) （供應睡房4 的浴室）			NJW160TFQL (for Bathroom) （供應浴室）	NJW160TFQL (for Bathroom) （供應浴室）	NJW160TFQL (for Bathroom) （供應浴室）	NJW160TFQL (for Bathroom) （供應浴室）	NJW160TFQL (for Bathroom) （供應浴室）

Fittings, finishes and appliances

裝置、裝修物料及設備

Appliances Schedule 設備說明

			Flat A, 90/F, Zone 1, Tower 20 第20座第1區90樓A室	Flat A, 87/F-89/F, Zone 1, Tower 20 第20座第1區87至89樓A室	Flat A, 67/F-73/F, 75/F-83/F and 85/F-86/F, Zone 1, Tower 20 第20座第1區67至73樓， 75至83樓及 85至86樓A室	Flat B, 67/F-73/F, 75/F-83/F and 85/F-90/F, Zone 1, Tower 20 第20座第1區67至73樓， 75至83樓及 85至90樓B室	Flat C, 67/F-73/F, 75/F-83/F and 85/F-90/F, Zone 1, Tower 20 第20座第1區67至73樓， 75至83樓及 85至90樓C室	Flat D, 67/F-73/F, 75/F-83/F and 85/F-90/F, Zone 1, Tower 20 第20座第1區67至73樓， 75至83樓及 85至90樓D室	Flat A, 16/F-23/F, 25/F-33/F and 35/F-36/F, Zone 2, Tower 20 第20座第2區16至23樓， 25至33樓及 35至36樓A室	Flat B, 38/F, Zone 2, Tower 20 第20座第2區38樓B室	Flat B, 15/F-23/F, 25/F-33/F and 35/F-36/F, Zone 2, Tower 20 第20座第2區15至23樓， 25至33樓及 35至36樓B室	Flat C, 12/F, 15/F-23/F, 25/F-33/F, and 35/F-37/F, Zone 2, Tower 20 第20座第2區12樓， 15至23樓， 25至33樓及 35至37樓C室	Flat D, 12/F, 15/F-23/F, 25/F-33/F, and 35/F-37/F, Zone 2, Tower 20 第20座第2區12樓， 15至23樓， 25至33樓及 35至37樓D室	Flat E, 16/F-23/F, 25/F-33/F and 35/F-38/F, Zone 2, Tower 20 第20座第2區16至23樓， 25至33樓及 35至38樓E室
Location 位置	Appliance 設備	Brand 品牌	Model No. 型號											
Kitchen 廚房	Microwave Oven 微波爐	Miele			M6262	M6262	M6262	M6262	M8261	M8261	M8261	M8261	M8261	M8261
	Oven 焗爐	Miele			H6090B	H6260B	H6090B	H6090B	H5240B	H4900B	H4900B			
	Steamer 電蒸爐	Miele	DG 6401	DG 6401	DG 6401	DG 6401	DG 6401	DG 6401	DG 5061	DG 4060	DG 4060			
	Wine Cooler 紅酒冷藏櫃	Miele			KWT 4154 UG-1									
	Washer / Dryer 洗衣乾衣機	Miele	WT2789 i WPMLW	WT2789 i WPMLW	WT2789 i WPMLW	WT2789 i WPMLW	WT2789 i WPMLW	WT2789 i WPMLW	WDi1641HK	WDi1641HK	WDi1641HK	WDi1641HK	WDi1641HK	WDi1641HK
	Refrigerator 雪櫃	Subzero			I650	I611	I650	I650	700 Tei	I650	I650			
	Refrigerator 雪櫃	Siemens 西門子										KI34NP60	KI34NP60	KI34NP60
	Dishwasher 洗碗碟機	Miele	G6160SCVi	G6160SCVi	G6160SCVi									
	Dishwasher 洗碗碟機	Miele												
	LED iDTV in Kitchen 廚房液晶體電視內置 高清接收器	Oolaa			KTV 2.0	KTV 2.0	KTV 2.0	KTV 2.0						
	LCD TV in Kitchen 廚房液晶體電視	JSA							B51002D	B51002D	B51002D	B51002D	B51002D	B51002D
	Electric Water Heater 電熱水爐	Stiebel Eltron 斯寶亞創	(Supplied from Toilet inside Store) (由儲物室洗手間供應)		(Supplied from Toilet inside Store) (由儲物室洗手間供應)	DT 6	(Supplied from Toilet inside Store) (由儲物室洗手間供應)	(Supplied from Toilet inside Store) (由儲物室洗手間供應)	DT 6	(Supplied from Toilet inside Store) (由儲物室洗手間供應)	(Supplied from Toilet inside Store) (由儲物室洗手間供應)	DT 6	DT 6	DT 6
Bathroom 浴室	LED iDTV in Bathroom 浴室液晶體電視內 置高清接收器	Oolaa	BTV10(MF)	BTV10(MF)	BTV10(MF)	BTV10(MF)	BTV10(MF)	BTV10(MF)						
	LCD TV in Bathroom 浴室液晶體電視	COMEMON							TM102W	TM102W	TM102W	TM102W	TM102W	TM102W
	Gas Water Heater 煤氣熱水爐	TGC				(Supplied from Kitchen) (由廚房供應)				(Supplied from Kitchen) (由廚房供應)	(Supplied from Kitchen) (由廚房供應)	(Supplied from Kitchen) (由廚房供應)	(Supplied from Kitchen) (由廚房供應)	(Supplied from Kitchen) (由廚房供應)
	Electric Water Heater 電熱水爐	Stiebel Eltron 斯寶亞創	(Supplied from Bathroom of Bedroom 2) (由睡房2的浴室供應)	(Supplied from Bathroom of Bedroom 2) (由睡房2的浴室供應)	(Supplied from Bathroom of Bedroom 2) (由睡房2的浴室供應)		DHE 21 DHE 27 (for Bathroom of Bedroom 3) (供應睡房3的浴室)	DHE 21	DHE 27					

Fittings, finishes and appliances

裝置、裝修物料及設備

Appliances Schedule 設備說明

			Flat A, 90/F, Zone 1, Tower 20 第20座第1區90樓A室	Flat A, 87/F-89/F, Zone 1, Tower 20 第20座第1區87至89樓A室	Flat A, 67/F-73/F, 75/F-83/F and 85/F-86/F, Zone 1, Tower 20 第20座第1區67至73樓， 75至83樓及 85至86樓A室	Flat B, 67/F-73/F, 75/F-83/F and 85/F-90/F, Zone 1, Tower 20 第20座第1區67至73樓， 75至83樓及 85至90樓B室	Flat C, 67/F-73/F, 75/F-83/F and 85/F-90/F, Zone 1, Tower 20 第20座第1區67至73樓， 75至83樓及 85至90樓C室	Flat D, 67/F-73/F, 75/F-83/F and 85/F-90/F, Zone 1, Tower 20 第20座第1區67至73樓， 75至83樓及 85至90樓D室	Flat A, 16/F-23/F, 25/F-33/F and 35/F-36/F, Zone 2, Tower 20 第20座第2區16至23樓， 25至33樓及 35至36樓A室	Flat B, 38/F, Zone 2, Tower 20 第20座第2區38樓B室	Flat B, 15/F-23/F, 25/F-33/F and 35/F-36/F, Zone 2, Tower 20 第20座第2區15至23樓， 25至33樓及 35至36樓B室	Flat C, 12/F, 15/F-23/F, 25/F-33/F, and 35/F-37/F, Zone 2, Tower 20 第20座第2區12樓， 15至23樓， 25至33樓及 35至37樓C室	Flat D, 12/F, 15/F-23/F, 25/F-33/F, and 35/F-37/F, Zone 2, Tower 20 第20座第2區12樓， 15至23樓， 25至33樓及 35至37樓D室	Flat E, 16/F-23/F, 25/F-33/F and 35/F-38/F, Zone 2, Tower 20 第20座第2區16至23樓， 25至33樓及 35至38樓E室	
Location 位置	Appliance 設備	Brand 品牌	Model No. 型號												
Bathroom 浴室	Mirror Defogster 鏡面除霧器	BMB	HKA-179A	HKA-179A	HKA-179A	HKA-179A	HKA-179A	HKA-179A	HKA-179A	HKA-179A	HKA-179A	HKA-179A	HKA-179A	HKA-179A	HKA-179A
	Ventilation Fan 抽氣扇	Ostberg													
	Ventilation Fan 抽氣扇	Panasonic 樂聲牌	FV-15NS1H (installed in Living & Dinning Room) (在飯客廳)	FV-15NS1H (installed in Living & Dinning Room) (在飯客廳)	FV-15NS1H (installed in Store Room) (在儲物 室)	FV-15NS1H	FV-15NS1H	FV-15NS1H	FV-15NS1H	FV-18NS1H	FV-15NS1H	FV-15NS1H (installed in Kitchen) (在廚房)	FV-15NS1H (installed in Kitchen) (在廚房)	FV-18NS1H (installed in pipe duct) (在管道槽)	
	Multifunctional Dehumidifier 多功能抽濕機	Cold Magic 高美	CDH22R2	CDH22R2	CDH22R2	CDH22R2	CDH22R2	CDH22R2	CDH22R2	CDH22R2	CDH22R2	CDH22R2	CDH22R2	CDH22R2	CDH22R2
Bathroom inside Bedroom 睡房內的浴室			Bathroom of Bedroom 2 睡房2的浴室	Bathroom of Bedroom 2 睡房2的浴室	Bathroom of Bedroom 2 睡房2的浴室		Bathroom of Bedroom 4 睡房4的浴室	Bathroom of Bedroom 4 睡房4的浴室		Bathroom of Bedroom 4 睡房4的浴室					
	LED iDTV in Bathroom 浴室液晶體電視內 置高清接收器	Oolaa	BTV10(MF)	BTV10(MF)	BTV10(MF)		BTV10(MF)	BTV10(MF)							
	LCD TV in Bathroom 浴室液晶體電視	COMEMON								TM102W					
	Gas Water Heater 煤氣熱水爐	TGC					(Supplied from Kitchen) (由廚房供應)								
	Electric Water Heater 電熱水爐	Stiebel Eltron 斯寶亞創	DHE 21 DHE 21 (for Bathroom) (供應浴室)	DHE 21 DHE 21 (for Bathroom) (供應浴室)	DHE 21 DHE 21 (for Bathroom) (供應浴室)			DHE 21 [#] DHE 21 SLi*		DHE 21					
	Mirror Defogster 鏡面除霧器	BMB	HKA-179A	HKA-179A	HKA-179A		HKA-179A	HKA-179A		HKA-179A					
	Ventilation Fan 抽氣扇	Ostberg													
	Ventilation Fan 抽氣扇	Pansonaic	FV-15NS1H	FV-15NS1H	FV-15NS1H		FV-15NS1H	FV-15NS1H		FV-15NS1H					
	Multifunctional Dehumidifier 多功能抽濕機	Cold Magic 高美													

Not applicable to Flat D, 75/F, Zone 1, Tower 20

不適用於第20座第1區75樓D室

* Only applicable to Flat D, 75/F, Zone 1, Tower 20

只適用於第20座第1區75樓D室

Fittings, finishes and appliances

裝置、裝修物料及設備

Appliances Schedule 設備說明

			Flat A, 90/F, Zone 1, Tower 20 第20座第1區90樓A室	Flat A, 87/F-89/F, Zone 1, Tower 20 第20座第1區87至89樓A室	Flat A, 67/F-73/F, 75/F-83/F and 85/F-86/F, Zone 1, Tower 20 第20座第1區67至73樓， 75至83樓及 85至86樓A室	Flat B, 67/F-73/F, 75/F-83/F and 85/F-90/F, Zone 1, Tower 20 第20座第1區67至73樓， 75至83樓及 85至90樓B室	Flat C, 67/F-73/F, 75/F-83/F and 85/F-90/F, Zone 1, Tower 20 第20座第1區67至73樓， 75至83樓及 85至90樓C室	Flat D, 67/F-73/F, 75/F-83/F and 85/F-90/F, Zone 1, Tower 20 第20座第1區67至73樓， 75至83樓及 85至90樓D室	Flat A, 16/F-23/F, 25/F-33/F and 35/F-36/F, Zone 2, Tower 20 第20座第2區16至23樓， 25至33樓及 35至36樓A室	Flat B, 38/F, Zone 2, Tower 20 第20座第2區38樓B室	Flat B, 15/F-23/F, 25/F-33/F and 35/F-36/F, Zone 2, Tower 20 第20座第2區15至23樓， 25至33樓及 35至36樓B室	Flat C, 12/F, 15/F-23/F, 25/F-33/F, and 35/F-37/F, Zone 2, Tower 20 第20座第2區12樓， 15至23樓， 25至33樓及 35至37樓C室	Flat D, 12/F, 15/F-23/F, 25/F-33/F, and 35/F-37/F, Zone 2, Tower 20 第20座第2區12樓， 15至23樓， 25至33樓及 35至37樓D室	Flat E, 16/F-23/F, 25/F-33/F and 35/F-38/F, Zone 2, Tower 20 第20座第2區16至23樓， 25至33樓及 35至38樓E室	
Location 位置	Appliance 設備	Brand 品牌	Model No. 型號												
Bathroom inside Bedroom 睡房內的浴室			Bathroom of Bedroom 4 睡房4的浴室	Bathroom of Bedroom 4 睡房4的浴室	Bathroom of Bedroom 4 睡房4的浴室	Bathroom of Bedroom 2 睡房2的浴室	Bathroom of Bedroom 3 睡房3的浴室	Bathroom of Bedroom 3 睡房3的浴室	Bathroom of Bedroom 1 睡房1的浴室	Bathroom of Bedroom 1 睡房1的浴室	Bathroom of Bedroom 1 睡房1的浴室	Bathroom of Bedroom 1 睡房1的浴室	Bathroom of Bedroom 2 睡房2的浴室	Bathroom of Bedroom 2 睡房2的浴室	Bathroom of Bedroom 2 睡房2的浴室
	LED iDTV in Bathroom 浴室液晶體電視內置高清接收器	Oolaa	BTV19(MF-WLS)	BTV19(MF-WLS)	BTV19(MF-WLS)	BTV19(MF-WLS)	BTV19(MF-WLS)	BTV17(MF-WLS)							
	LCD TV in Bathroom 浴室液晶體電視	Toshiba 東芝							20V 300H	20V 300H	20V 300H	20V 300H	20V 300H	20V 300H	20V 300H
	Electric Water Heater 電熱水爐	Stiebel Eltron 斯寶亞創	DHE 27	DHE 27	DHE 27	DHE 27	(Supplied from Bathroom) (由浴室供應)	DHE 27	DHE 27	DHE 27	DHE 27	DHE 27	DHE 27	DHE 27	DHE 27
	Mirror Defogster 鏡面除霧器	BMB	HKA-179A	HKA-179A	HKA-179A	HKA-179A	HKA-179A	HKA-179A	HKA-179A	HKA-179A	HKA-179A	HKA-179A	HKA-179A	HKA-179A	HKA-179A
	Ventilation Fan 抽氣扇	Ostberg													
	Ventilation Fan 抽氣扇	Panasonic 樂聲牌	FV-18NS1H	FV-18NS1H	FV-18NS1H	FV-18NS1H	FV-18NS1H	FV-18NF1H	FV-18NS1H	FV-18NS1H	FV-18NS1H	FV-18NS1H	FV-18NS1H	FV-18NS1H	FV-18NS1H (installed in pipe duct) (在管道槽)
Toilet inside Living/Dining 客飯廳洗手間	Electric Water Heater 電熱水爐	Stiebel Eltron 斯寶亞創													
	Mirror Defogster 鏡面除霧器	BMB													
	Ventilation Fan 抽氣扇	Ostberg													
	Ventilation Fan 抽氣扇	Panasonic 樂聲牌													
Toilet inside Store 儲物室洗手間	Electric Water Heater 電熱水爐	Stiebel Eltron 斯寶亞創	HDB 21	HDB 21	HDB 21		HDB 21	HDB 21	HDB 21	HDB 21	HDB 21				
	Ventilation Fan 抽氣扇	Ostberg													
	Ventilation Fan 抽氣扇	Vortice													
	Ventilation Fan 抽氣扇	Panasonic 樂聲牌	FV-12NS1H	FV-12NS1H	FV-12NS1H		FV-12NS1H	FV-12NS1H	FV-12NS1H	FV-12NS1H	FV-12NS1H				

Fittings, finishes and appliances

裝置、裝修物料及設備

Appliances Schedule 設備說明

				Flat A, 91/F, Zone 1, Tower 21 第21座第1區 91樓A室	Flat A, 90/F, Zone 1, Tower 21 第21座第1區 90樓A室	Flat A, 82/F, Zone 1, Tower 21 第21座第1區 82樓A室	Flat B, 91/F, Zone 1, Tower 21 第21座第1區 91樓B室	Flat C, 91/F, Zone 1, Tower 21 第21座第1區 91樓C室	Flat A, 81/F, Zone 3, Tower 21 第21座第3區 81樓A室	Flat B, 81/F, Zone 3, Tower 21 第21座第3區 81樓B室
Location 位置	Appliance 設備		Brand 品牌	Model No. 型號						
Living/Dining Room/ Bedroom/Store/ Kitchen/Bathroom 客飯廳、睡房、 儲物室、廚房及 浴室	Water Cooled Split Type Air-conditioner 水冷分體式冷氣機	Indoor Unit 室內機	McQuay 麥克維爾	MCC015TP MCC020TP MCC025TP MCC030TP M5WM10JR M5WM15JR M5WM20JR	MCC015TP MCC020TP MCC025TP M5WM10JR M5WM15JR	MCC015MR MCC020MR MCC025MR MCC030MR MWM010GR MWM015GR	MCC015TP MCC020TP MCC025TP MCC030TP M5WM10JR M5WM15JR M5WM15JR	MCC015TP MCC020TP MCC030TP M5WM10JR M5WM15JR M5WM20JR	MCC015TP MCC020TP MCC025TP MCC030TP M5WM10JR	MCC015TP MCC020TP MCC025TP MCC030TP M5WM10JR M5WM15JR
		Outdoor Unit 室外機		MWSC010DRP MWSC015DRP MWSC020DRP MWSC025DRP MWSC030DRP	MWSC010DRP MWSC015DRP MWSC020DRP MWSC025DRP	MWSC015BR MWSC020BR MWSC025BR MWSC030BR MWSC010BR	MWSC010DRP MWSC015DRP MWSC020DRP MWSC025DRP MWSC030DRP	MWSC010DRP MWSC015DRP MWSC020DRP MWSC025DRP MWSC030DRP	MWSC010DRP MWSC015DRP MWSC020DRP MWSC025DRP MWSC030DRP	MWSC010DRP MWSC015DRP MWSC020DRP MWSC025DRP MWSC030DRP
	Air Cooled Split Type Air-conditioner 風冷分體式冷氣機	Indoor Unit 室內機	Daikin 大金							
		Outdoor Unit 室外機								
		Indoor Unit 室內機	Panasonic 樂聲牌							
		Outdoor Unit 室外機								
Living/Dining Room 客飯廳	Exhaust Hood 抽油煙機		Miele	DA420V	DA 420V	DA420V				
	Refrigerator 雪櫃		Subzero	I650G	I650G	I650G				
	Refrigerator 雪櫃		Siemens 西門子	KU15RA40	KU15R441	KU15RA40		KU15RA40		
	Induction Hob (Double-burner) 電磁爐（雙爐頭）		Miele	KM-418	KM 418-1	KM-418				
	Electric BBQ Grill 電燒烤爐		Miele	KM-411-3	KM 411-3	KM-411-3				
	Microwave Oven 微波爐		Miele	M8261	M8261	M8261				
	Oven 焗爐		Miele	H4900B		H4900B				
	Steamer 電蒸爐		Miele	DG 4060	DG 4060	DG 4060				
	Coffee Maker 咖啡機		Miele	CVA4060	CVA4060					
	Wine Cooler 紅酒冷藏櫃		Miele	KWT 4154 UG	KWT 4154 UG-1	KWT 4154 UG		KWT 4154 UG-1		
	Dishwasher 洗碗碟機		Miele	G1833 SCi	G1833 SCi	G1833 SCi				
	Washer / Dryer 洗衣乾衣機		Miele		WT 2679i WPM	WT 2679 I WPM				
	LCD TV 液晶體電視		Sharp 聲寶			LC-19A35H				
	LCD TV 液晶體電視		Sony 索尼		KLV-20S400A					
	Electric Water Heater 電熱水爐		斯寶亞創 Stiebel Eltron							

Fittings, finishes and appliances

裝置、裝修物料及設備

Appliances Schedule 設備說明

			Flat A, 91/F, Zone 1, Tower 21 第21座第1區 91樓A室	Flat A, 90/F, Zone 1, Tower 21 第21座第1區 90樓A室	Flat A, 82/F, Zone 1, Tower 21 第21座第1區 82樓A室	Flat B, 91/F, Zone 1, Tower 21 第21座第1區 91樓B室	Flat C, 91/F, Zone 1, Tower 21 第21座第1區 91樓C室	Flat A, 81/F, Zone 3, Tower 21 第21座第3區 81樓A室	Flat B, 81/F, Zone 3, Tower 21 第21座第3區 81樓B室
Location 位置	Appliance 設備	Brand 品牌	Model No. 型號						
Kitchen 廚房	Gas Hob (Single-burner) 煤氣煮食爐（單爐頭）	Miele	KM-416-3	KM-416-3	KM-416-3	KM-416-3	KM 416	KM-416-3	KM-416-3
	Gas Hob (Double-burner) 煤氣煮食爐（雙爐頭）	Miele	KM-405-3	KM 405-3	KM-405-3	KM-405-3	KM 405	KM-405-3	KM-405-3
	Induction Hob (Double-burner) 電磁爐（雙爐頭）	Miele							
	Electric BBQ Grill 電燒烤爐	Miele				KM-411-3	KM-411-3	KM-411-3	KM-411-3
	Exhaust Hood 抽油煙機	Miele	DA422-4	DA 422-4	DA422	DA422	DA 422-4	DA422	DA422
	Exhaust Fan (Mounted above false ceiling) 抽氣扇（置於假天花上）	Ostberg	LPK 200B	LPK 200B	LPK 200B	LPK 200B	LPK 200B	LPK 200B	LPK 200B
	Exhaust Fan (Mounted above false ceiling) 抽氣扇（置於假天花上）	Panasonic 樂聲牌							
	Gas Water Heater 煤氣熱水爐	TGC				NJW160TFQL (for Bathroom of Bedroom 4) （供應睡房4的浴室）			
	Microwave Oven 微波爐	Miele				M8261	M8261	M8261	M8261
	Oven 焗爐	Miele		H4900B		H4900B	H4900B	H4900B	H4900B
	Steamer 電蒸爐	Miele				DG 4060	DG 4060	DG 4060	DG 4060
	Coffee Maker 咖啡機	Miele					CVA4060		
	Wine Cooler 紅酒冷藏櫃	Miele				KWT 4154 UG			
	Washer / Dryer 洗衣乾衣機	Miele	WT 2679 I WPM			WT 2679 I WPN	WT 2679 I WPM	WT 2679 i WPM	WT 2679 i WPM
	Refrigerator 雪櫃	Subzero				I650G	I650	I650	I661
	Refrigerator 雪櫃	Siemens 西門子							
	Dishwasher 洗碗碟機	Miele				G1833 SCi	G1833 SCi		
	LCD TV in Kitchen 廚房液晶體電視	JSA				B51002D		B51002D	B51002D
	LCD TV in Kitchen 廚房液晶體電視	Sharp 聲寶							
	Electric Water Heater 電熱水爐	Stiebel Eltron 斯寶亞創	(Supplied from Toilet inside Store) （由儲物室洗手間供應）	(Supplied from Toilet inside Store) （由儲物室洗手間供應）	(Supplied from Toilet inside Store) （由儲物室洗手間供應）	DT 6	(Supplied from Toilet inside Store) （由儲物室洗手間供應）	(Supplied from Toilet inside Store) （由儲物室洗手間供應）	DT 6

Fittings, finishes and appliances

裝置、裝修物料及設備

Appliances Schedule 設備說明

			Flat A, 91/F, Zone 1, Tower 21 第21座第1區 91樓A室	Flat A, 90/F, Zone 1, Tower 21 第21座第1區 90樓A室	Flat A, 82/F, Zone 1, Tower 21 第21座第1區 82樓A室	Flat B, 91/F, Zone 1, Tower 21 第21座第1區 91樓B室	Flat C, 91/F, Zone 1, Tower 21 第21座第1區 91樓C室	Flat A, 81/F, Zone 3, Tower 21 第21座第3區 81樓A室	Flat B, 81/F, Zone 3, Tower 21 第21座第3區 81樓B室
Location 位置	Appliance 設備	Brand 品牌	Model No. 型號						
Bathroom 浴室	LCD TV in Bathroom 浴室液晶體電視	COMEMON			TM102W	TM102W		TM102W	TM102W
	Gas Water Heater 煤氣熱水爐	TGC							
	Electric Water Heater 電熱水爐	Stiebel Eltron 斯寶亞創	DHE 21 SL	DHE 21 SL	DHE 21	DHE 21 SL	DHE 21 SL	DHE 21	DHE 21
	Mirror Defroster 鏡面除霧器	BMB	HKA-179A		HKA-179A	HKA-179A		HKA-179A	HKA-179A
	Ventilation Fan 抽氣扇	Ostberg	RFE 140A	RFE 140A	RFE 140A	RFE 140A	RFE 140A	RFE 140A (installed in A/C Room) (在冷氣機機房)	RFE 140A (installed in A/C Room) (在冷氣機機房)
	Ventilation Fan 抽氣扇	Panasonic 樂聲牌							
	Multifunctional Dehumidifier 多功能抽濕機	Cold Magic 高美	CDH22R2	CDH22R2	CDH22R2	CDH22R2	CDH22R2	CDH22R2	CDH22R2
Bathroom inside Bedroom 睡房內的浴室			Bathroom of Bedroom 4 睡房4的浴室	Bathroom of Bedroom 4 睡房4的浴室	Bathroom of Bedroom 4 睡房4的浴室	Bathroom of Bedroom 4 睡房4的浴室		Bathroom of Bedroom 3 睡房3的浴室	
	LCD TV in Bathroom 浴室液晶體電視	COMEMON		TM102W	TM102W	TM102W		TM102W	
	LCD TV in Bathroom 浴室液晶體電視	COSTEL	CVB170						
	Gas Water Heater 煤氣熱水爐	TGC				(Supplied from Kitchen) (由廚房供應)			
	Electric Water Heater 電熱水爐	Stiebel Eltron 斯寶亞創	DHE 21 SL	DHE 21 SL	DHE 21			DHE 27	
	Mirror Defroster 鏡面除霧器	BMB	HKA-179A		HKA-179A	HKA-179A		HKA-179A	
	Ventilation Fan 抽氣扇	Ostberg	RFE 140A	RFE 140A	RFE 140A	RFE 140A (installed in Kitchen) (在廚房)		RFE 140B	
	Ventilation Fan 抽氣扇	Panasonic 樂聲牌							
	Multifunctional Dehumidifier 多功能抽濕機	Cold Magic 高美							

Fittings, finishes and appliances

裝置、裝修物料及設備

Appliances Schedule 設備說明

			Flat A, 91/F, Zone 1, Tower 21 第21座第1區 91樓A室	Flat A, 90/F, Zone 1, Tower 21 第21座第1區 90樓A室	Flat A, 82/F, Zone 1, Tower 21 第21座第1區 82樓A室	Flat B, 91/F, Zone 1, Tower 21 第21座第1區 91樓B室	Flat C, 91/F, Zone 1, Tower 21 第21座第1區 91樓C室	Flat A, 81/F, Zone 3, Tower 21 第21座第3區 81樓A室	Flat B, 81/F, Zone 3, Tower 21 第21座第3區 81樓B室
Location 位置	Appliance 設備	Brand 品牌	Model No. 型號						
Bathroom inside Bedroom 睡房內的浴室					Bathroom of Bedroom 3 睡房3的浴室		Bathroom of Bedroom 3 睡房3的浴室		
	LCD TV in Bathroom 浴室液晶體電視	COMEMON			TM102W				
	LCD TV in Bathroom 浴室液晶體電視	LG					22LM20R-TA		
	Electric Water Heater 電熱水爐	Stiebel Eltron 斯寶亞創			DHE 27		DHE 21 SL		
	Mirror Defroster 鏡面除霧器	BMB			HKA-179A				
	Ventilation Fan 抽氣扇	Ostberg			LPK 200A		RFE 140A		
	Ventilation Fan 抽氣扇	Panasonic 樂聲牌							
	Multifunctional Dehumidifier 多功能抽濕機	Cold Magic 高美					CDH22R2		
Bathroom inside Bedroom 睡房內的浴室			Bathroom of Bedroom 3 睡房3的浴室	Bathroom of Bedroom 3 睡房3的浴室		Bathroom of Bedroom 3 睡房3的浴室	Bathroom of Bedroom 4 睡房4的浴室		Bathroom of Bedroom 1 睡房1的浴室
	LCD TV in Bathroom 浴室液晶體電視	Toshiba 東芝							20V300H
	LCD TV in Bathroom 浴室液晶體電視	COMEMON		TM102W		TM102W			
	LCD TV in Bathroom 浴室液晶體電視	COSTEL	CVB103						
	Electric Water Heater 電熱水爐	Stiebel Eltron 斯寶亞創	DHE 27	DHE 27		DHE 27	DHE 21 SL		DHE 27
	Mirror Defroster 鏡面除霧器	BMB	HKA-179A	HKA-179A		HKA-179A			HKA-179A
	Ventilation Fan 抽氣扇	Ostberg	LPK 200A	LPK 200A		RFE 140B	RFE 140A		RFE 140B (installed in A/C Room) (在冷氣機機房)
	Ventilation Fan 抽氣扇	Panasonic 樂聲牌							
Bathroom inside Bedroom 睡房內的浴室							Bathroom of Bedroom 4 睡房4的浴室		
	LCD TV in Bathroom 浴室液晶體電視	LG					20LH20R-TA		
	Electric Water Heater 電熱水爐	Stiebel Eltron 斯寶亞創					DHE 27		
	Ventilation Fan 抽氣扇	Ostberg					RFE 140B		

Fittings, finishes and appliances

裝置、裝修物料及設備

Appliances Schedule 設備說明

			Flat A, 91/F, Zone 1, Tower 21 第21座第1區 91樓A室	Flat A, 90/F, Zone 1, Tower 21 第21座第1區 90樓A室	Flat A, 82/F, Zone 1, Tower 21 第21座第1區 82樓A室	Flat B, 91/F, Zone 1, Tower 21 第21座第1區 91樓B室	Flat C, 91/F, Zone 1, Tower 21 第21座第1區 91樓C室	Flat A, 81/F, Zone 3, Tower 21 第21座第3區 81樓A室	Flat B, 81/F, Zone 3, Tower 21 第21座第3區 81樓B室
Location 位置	Appliance 設備	Brand 品牌	Model No. 型號						
Bathroom inside Study 書房內的浴室	Electric Water Heater 電熱水爐	Stiebel Eltron 斯寶亞創	HDB 21				DHE 21 SL		
	Mirror Defroster 鏡面除霧器	BMB	HKA-179A						
	LCD TV in Bathroom 浴室液晶體電視	COMEMON							
	Ventilation Fan 抽氣扇	Ostberg	RFE 140A				RFE 140A		
	Ventilation Fan 抽氣扇	Panasonic 樂聲牌							
Toilet inside Study 書房內的洗手間	Electric Water Heater 電熱水爐	Stiebel Eltron 斯寶亞創				DT 6		DT 6	DT 6
	Mirror Defroster 鏡面除霧器	BMB				HKA-179A		HKA-179A	HKA-179A
	Ventilation Fan 抽氣扇	Ostberg				RFE 140A		RFE 140A	REF 140A
	Ventilation Fan 抽氣扇	Panasonic 樂聲牌							
Toilet inside Living/Dinning Room 客飯廳的洗手間	Electric Water Heater 電熱水爐	Stiebel Eltron 斯寶亞創							
	Mirror Defroster 鏡面除霧器	BMB							
	Ventilation Fan 抽氣扇	Ostberg		RFE 140A					
	Ventilation Fan 抽氣扇	Panasonic 樂聲牌							
Toilet inside Store 儲物室洗手間	Electric Water Heater 電熱水爐	Stiebel Eltron 斯寶亞創	HDB 21	HDB 21	HDB 21	HDB 21	HDB 21	HDB 21	HDB 21
	Ventilation Fan 抽氣扇	Ostberg	RFE 140A	RFE 140A	RFE 140A	RFE 140A (installed in Kitchen) (在廚房)	RFE 140A	RFE 140A (installed in A/C Room) (在冷氣機機房)	RFE 140A (installed in A/C Room) (在冷氣機機房)
	Ventilation Fan 抽氣扇	Panasonic 樂聲牌							

Fittings, finishes and appliances

裝置、裝修物料及設備

Appliances Schedule 設備說明

				Flat C, 80/F, Zone 3, Tower 21 第21座第3區 80樓C室	Flat C, 79/F, Zone 3, Tower 21 第21座第3區 79樓C室	Flat D, 81/F, Zone 3, Tower 21 第21座第3區 81樓D室	Flat A, 12/F, Zone 6, Tower 21 第21座第6區 12樓A室	Flat B, 37/F, Zone 6, Tower 21 第21座第6區 37樓B室	Flat B, 12/F, Zone 6, Tower 21 第21座第6區 12樓B室	Flat C, 38/F, Zone 6, Tower 21 第21座第6區 38樓C室
Location 位置	Appliance 設備		Brand 品牌	Model No. 型號						
Living/Dining Room/ Bedroom/Store/ Kitchen/Bathroom 客飯廳、睡房、 儲物室、廚房及 浴室	Water Cooled Split Type Air-conditioner 水冷分體式冷氣機	Indoor Unit 室內機	Panasonic 樂聲牌	MCC015TP MCC020TP MCC025TP M5WM10JR M5WM15JR M5WM20JR	MCC015TP MCC020TP MCC025TP M5WM10JR M5WM15JR	MCC015TP MCC020TP MCC025TP MCC030TP M5WM10JR				
		Outdoor Unit 室外機		MWSC010DRP MWSC015DRP MWSC020DRP MWSC025DRP	MWSC010DRP MWSC015DRP MWSC020DRP MWSC025DRP	MWSC010DRP MWSC015DRP MWSC020DRP MWSC025DRP MWSC030DRP				
	Air Cooled Split Type Air-conditioner 風冷分體式冷氣機	Indoor Unit 室內機	Daikin 大金				FDYB35KAVE FDYB60KAVE FTXD25DVMA	FDYB35KAVE FTXD25DVMA FTXD35DVMA	FDYB35KAVE FDYB50KAVE FTXD25DVMA	FDYB35KAVE FDYB50KAVE FTXD25DVMA
		Outdoor Unit 室外機					RY35FV1A RY60GAV1A RXD25DVMA	RY35FV1A RXD25DVMA RXD35DVMA	RY35FV1A RY50GV1A RXD25DVMA	RY35FV1A RY50GV1A RXD25DVMA
		Indoor Unit 室內機	Panasonic 樂聲牌	CS-E28RKDS						
		Outdoor Unit 室外機		CU-E28RKD						
Living/Dining Room 客飯廳	Exhaust Hood 抽油煙機		Miele	DA420V						
	Refrigerator 雪櫃		Subzero	I650G						
	Refrigerator 雪櫃		Siemens 西門子							
	Induction Hob (Double-burner) 電磁爐（雙爐頭）		Miele	KM-418						
	Electric BBQ Grill 電燒烤爐		Miele	KM-411-3						
	Microwave Oven 微波爐		Miele							
	Oven 焗爐		Miele							
	Steamer 電蒸爐		Miele							
	Coffee Maker 咖啡機		Miele							
	Wine Cooler 紅酒冷藏櫃		Miele	KWT 4154 UG						
	Dishwasher 洗碗碟機		Miele							

Fittings, finishes and appliances

裝置、裝修物料及設備

Appliances Schedule 設備說明

			Flat C, 80/F, Zone 3, Tower 21 第21座第3區 80樓C室	Flat C, 79/F, Zone 3, Tower 21 第21座第3區 79樓C室	Flat D, 81/F, Zone 3, Tower 21 第21座第3區 81樓D室	Flat A, 12/F, Zone 6, Tower 21 第21座第6區 12樓A室	Flat B, 37/F, Zone 6, Tower 21 第21座第6區 37樓B室	Flat B, 12/F, Zone 6, Tower 21 第21座第6區 12樓B室	Flat C, 38/F, Zone 6, Tower 21 第21座第6區 38樓C室
Location 位置	Appliance 設備	Brand 品牌	Model No. 型號						
Living/Dining Room 客飯廳	Washer / Dryer 洗衣乾衣機	Miele							
	LCD TV 液晶體電視	Sharp 聲寶							
	LCD TV 液晶體電視	Sony 索尼							
	Electric Water Heater 電熱水爐	斯寶亞創 Stiebel Eltron	DT 6						
Kitchen 廚房	Gas Hob (Single-burner) 煤氣煮食爐（單爐頭）	Miele	KM-416-3	KM-416-3	KM-416-3	KM-416-3	KM-416-3	KM-416-3	KM-416-3
	Gas Hob (Double-burner) 煤氣煮食爐（雙爐頭）	Miele	KM-405-3	KM-405-3	KM-405-3	KM-405-3	KM-405-3	KM-405-3	KM-405-3
	Induction Hob (Double-burner) 電磁爐（雙爐頭）	Miele							
	Electric BBQ Grill 電燒烤爐	Miele		KM-411-3	KM-411-3	KM-411-3	KM-411-3	KM-411-3	KM-411-3
	Exhaust Hood 抽油煙機	Miele	DA422-4	DA422	DA422	DA422	DA422	DA422	DA422
	Exhaust Fan (Mounted above false ceiling) 抽氣扇（置於假天花上）	Ostberg	LPK 200B	LPK 200B	LPK 200B	RFE 140B	LPK 200B	RFE 140B	LPK 200B
	Exhaust Fan (Mounted above false ceiling) 抽氣扇（置於假天花上）	Panasonic 樂聲牌							
	Gas Water Heater 煤氣熱水爐	TGC					NJW160TFQL (for Bathroom) （供應浴室）	NJW160TFQL (for Bathroom) （供應浴室）	
	Microwave Oven 微波爐	Miele	M8261	M8261	M8261	M8261	M8261	M8261	M8261
	Oven 焗爐	Miele	H4900B	H4900B	H4900B	H4900B	H4900B	H4900B	H4900B
	Steamer 電蒸爐	Miele	DG 4060	DG 4060	DG 4060	DG 4060	DG 4060	DG 4060	DG 4060
	Coffee Maker 咖啡機	Miele							
	Wine Cooler 紅酒冷藏櫃	Miele	KWT 4154 UG	KWT 4154 UG		KMT 4154 UG			
	Washer / Dryer 洗衣乾衣機	Miele	WT 2679 I WPM	WT 2679 I WPM	WT 2679 I WPM	WT 2679 I WPM	WT 2679 I WPM	WT 2679 I WPM	WT 2679 I WPM
	Refrigerator 雪櫃	Subzero		I650G	I661	I650	I661	I650	I650G
	Refrigerator 雪櫃	Siemens 西門子							
	Dishwasher 洗碗碟機	Miele	G1834 SCi			G1834 SCi			
	LCD TV in Kitchen 廚房液晶體電視	JSA			B51002D	B51002D	B51002D	B51002D	B51002D
	LCD TV in Kitchen 廚房液晶體電視	Sharp 聲寶		LC-20S5H					
	Electric Water Heater 電熱水爐	Stiebel Eltron 斯寶亞創	DT 6	DT 6	DT 6	DT 6	(Supplied from Toilet inside Store) （由儲物室洗手間供應）	(Supplied from Toilet inside Store) （由儲物室洗手間供應）	DT 6

Fittings, finishes and appliances

裝置、裝修物料及設備

Appliances Schedule 設備說明

			Flat C, 80/F, Zone 3, Tower 21 第21座第3區 80樓C室	Flat C, 79/F, Zone 3, Tower 21 第21座第3區 79樓C室	Flat D, 81/F, Zone 3, Tower 21 第21座第3區 81樓D室	Flat A, 12/F, Zone 6, Tower 21 第21座第6區 12樓A室	Flat B, 37/F, Zone 6, Tower 21 第21座第6區 37樓B室	Flat B, 12/F, Zone 6, Tower 21 第21座第6區 12樓B室	Flat C, 38/F, Zone 6, Tower 21 第21座第6區 38樓C室
Location 位置	Appliance 設備	Brand 品牌	Model No. 型號						
Bathroom 浴室	LCD TV in Bathroom 浴室液晶體電視	COMEMON	TM102W	TM102W	TM102W	TM102W	TM102W	TM102W	TM102W
	Gas Water Heater 煤氣熱水爐	TGC					(Supplied from Kitchen) (由廚房供應)	(Supplied from Kitchen) (由廚房供應)	
	Electric Water Heater 電熱水爐	Stiebel Eltron 斯寶亞創	DHE 21	DHE 27	DHE 21	DHE 21			DHE 21
	Mirror Defroster 鏡面除霧器	BMB		HKA-179A	HKA-179A	HKA-179A	HKA-179A	HKA-179A	HKA-179A
	Ventilation Fan 抽氣扇	Ostberg	RFE 140A (installed in A/C Room) (在冷氣機機房)	RFE 140B (installed in A/C Room) (在冷氣機機房)	RFE 140A (installed in E&M Room) (在機電房)	RFE 140A(Bathroom of Lower Floor) (下層浴室) RFE 140B (Bathroom of Upper Floor) (上層浴室)	RFE 140A	RFE 140A	RFE 140A
	Ventilation Fan 抽氣扇	Panasonic 樂聲牌							
	Multifunctional Dehumidifier 多功能抽濕機	Cold Magic 高美	CDH22R2		CDH22R2	CDH22R2	CDH22R2		
Bathroom inside Bedroom 睡房內的浴室			Bathroom of Bedroom 3 睡房3的浴室	Bathroom of Bedroom 4 睡房4的浴室		Bathroom of Bedroom 1 睡房1的浴室	Bathroom of Bedroom 4 睡房4的浴室		
	LCD TV in Bathroom 浴室液晶體電視	COMEMON	TM102W	TM102W		TM102W	TM102W		
	LCD TV in Bathroom 浴室液晶體電視	COSTEL							
	Gas Water Heater 煤氣熱水爐	TGC							
	Electric Water Heater 電熱水爐	Stiebel Eltron 斯寶亞創	DHE 27	DHE 21		DHE 27	DHE 21		
	Mirror Defroster 鏡面除霧器	BMB		HKA-179A		HKA-179A	HKA-179A		
	Ventilation Fan 抽氣扇	Ostberg	RFE 140B	RFE 140A		RFE 140B	RFE 140A		
	Ventilation Fan 抽氣扇	Panasonic 樂聲牌							
	Multifunctional Dehumidifier 多功能抽濕機	Cold Magic 高美		CDH22R2					

Fittings, finishes and appliances

裝置、裝修物料及設備

Appliances Schedule 設備說明

			Flat C, 80/F, Zone 3, Tower 21 第21座第3區 80樓C室	Flat C, 79/F, Zone 3, Tower 21 第21座第3區 79樓C室	Flat D, 81/F, Zone 3, Tower 21 第21座第3區 81樓D室	Flat A, 12/F, Zone 6, Tower 21 第21座第6區 12樓A室	Flat B, 37/F, Zone 6, Tower 21 第21座第6區 37樓B室	Flat B, 12/F, Zone 6, Tower 21 第21座第6區 12樓B室	Flat C, 38/F, Zone 6, Tower 21 第21座第6區 38樓C室
Location 位置	Appliance 設備	Brand 品牌	Model No. 型號						
Bathroom inside Bedroom 睡房內的浴室			Bathroom of Bedroom 4 睡房4的浴室			Bathroom of Bedroom 4 睡房4的浴室			
	LCD TV in Bathroom 浴室液晶體電視	COMEMON	TM102W			TM102W			
	LCD TV in Bathroom 浴室液晶體電視	LG							
	Electric Water Heater 電熱水爐	Stiebel Eltron 斯寶亞創	DHE 21			DHE 27			
	Mirror Defroster 鏡面除霧器	BMB				HKA-179A			
	Ventilation Fan 抽氣扇	Ostberg	RFE 140A			RFE 140B			
	Ventilation Fan 抽氣扇	Panasonic 樂聲牌							
	Multifunctional Dehumidifier 多功能抽濕機	Cold Magic 高美							
Bathroom inside Bedroom 睡房內的浴室			Bathroom of Bedroom 5 睡房5的浴室	Bathroom of Bedroom 2 睡房2的浴室	Bathroom of Bedroom 3 睡房3的浴室	Bathroom of Bedroom 2 睡房2的浴室	Bathroom of Bedroom 1 睡房1的浴室	Bathroom of Bedroom 1 睡房1的浴室	Bathroom of Bedroom 3 睡房3的浴室
	LCD TV in Bathroom 浴室液晶體電視	Toshiba 東芝	20V300H	20V300H	20V300H	20V300H	20V300H	20V300H	20V300H
	LCD TV in Bathroom 浴室液晶體電視	COMEMON							
	LCD TV in Bathroom 浴室液晶體電視	COSTEL							
	Electric Water Heater 電熱水爐	Stiebel Eltron 斯寶亞創	DHE 27	DHE 27	DHE 27	DHE 27	DHE 27	DHE 27	DHE 27
	Mirror Defroster 鏡面除霧器	BMB		HKA-179A	HKA-179A	HKA-179A	HKA-179A	HKA-179A	HKA-179A
	Ventilation Fan 抽氣扇	Ostberg	LPK 200A	LPK 200A	LPK 200A	RFE 140B	RFE 140B	RFE 140B	RFE 140B
	Ventilation Fan 抽氣扇	Panasonic 樂聲牌							
Bathroom inside Bedroom 睡房內的浴室									
	LCD TV in Bathroom 浴室液晶體電視	LG							
	Electric Water Heater 電熱水爐	Stiebel Eltron 斯寶亞創							
	Ventilation Fan 抽氣扇	Ostberg							