

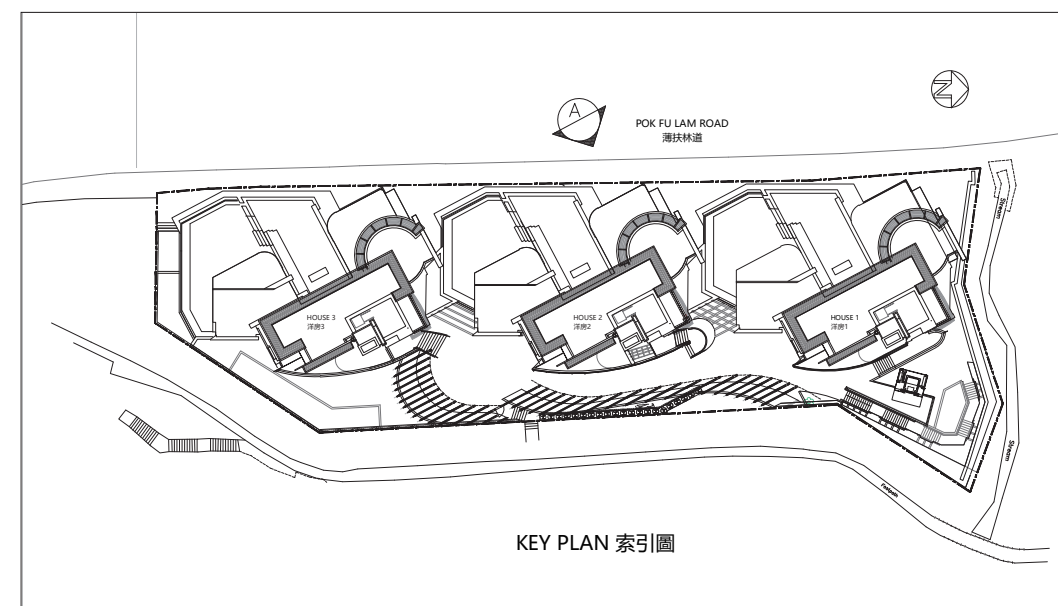
ELEVATION A  
立面圖 A

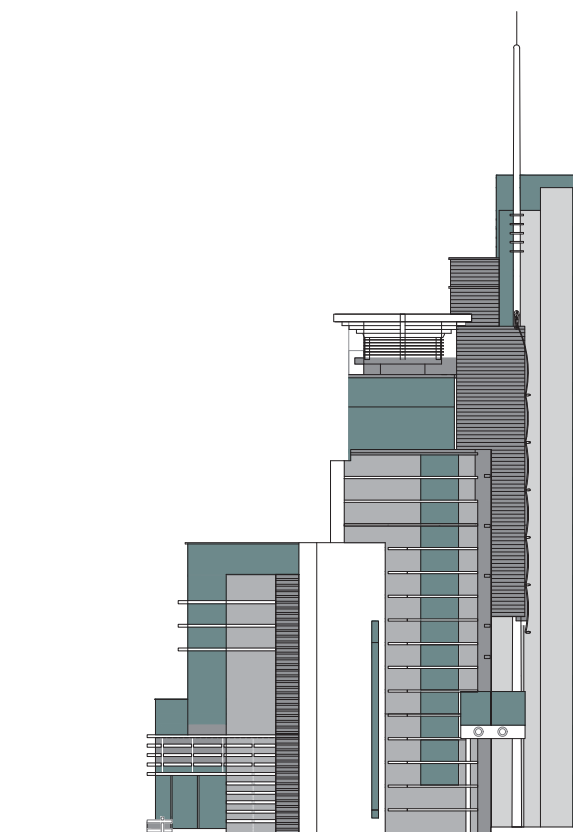
Authorized Person for the Development certified that the elevation shown on this plan:

1. are prepared on the basis of the approved Building Plans for the Development as of 30 October 2023; and
2. are in general accordance with the outward appearance of the Development.

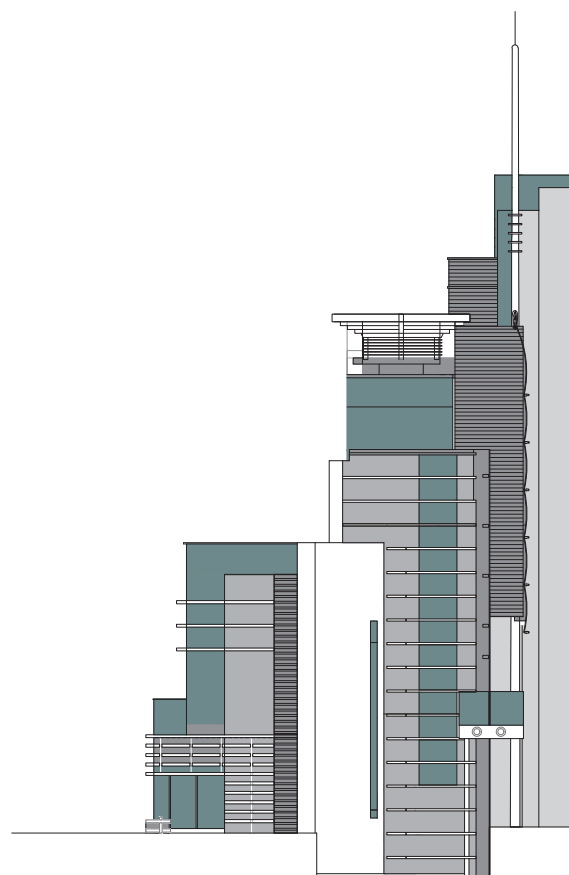
發展項目的認可人士證明本圖所顯示的立面:

1. 以2023年10月30日的情況為準的發展項目的批准的建築圖則為基礎擬備;及
2. 大致上與發展項目的外觀一致。

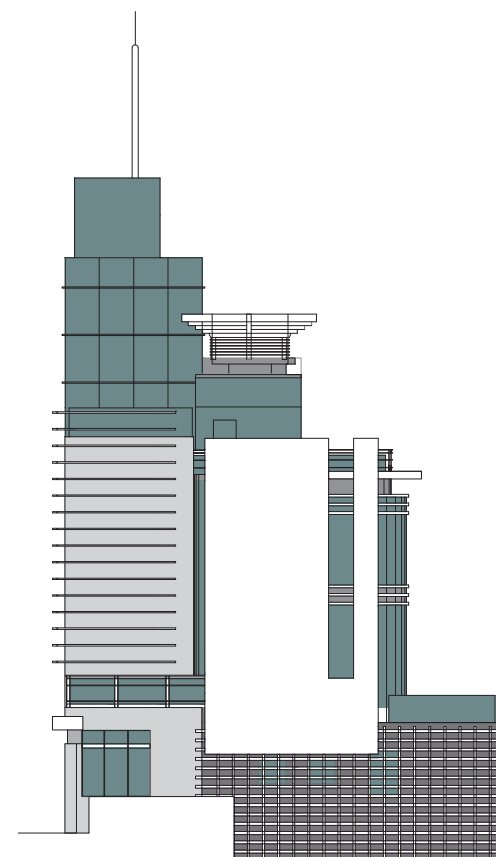




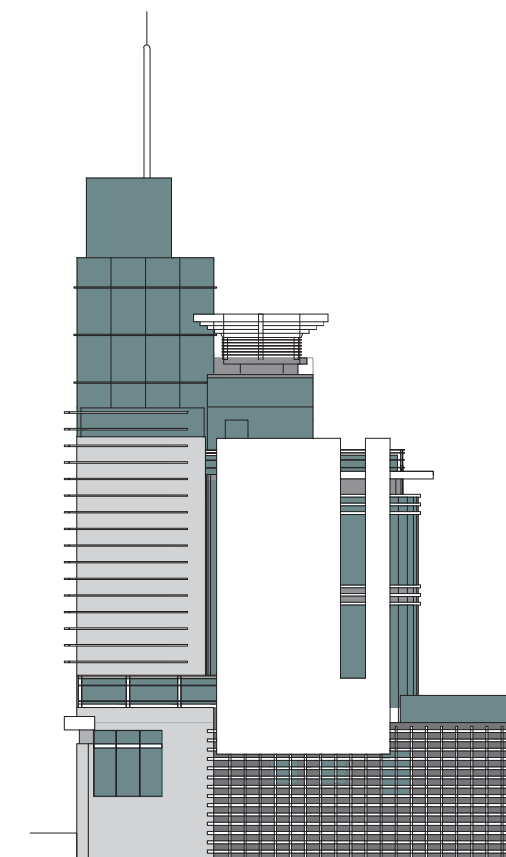
ELEVATION B1 (HOUSE 3)  
立面圖 B1 (洋房3)



ELEVATION B2 (HOUSE 1 & 2)  
立面圖 B2 (洋房1及2)



ELEVATION C1 (HOUSE 2 & 3)  
立面圖 C1 (洋房2及3)



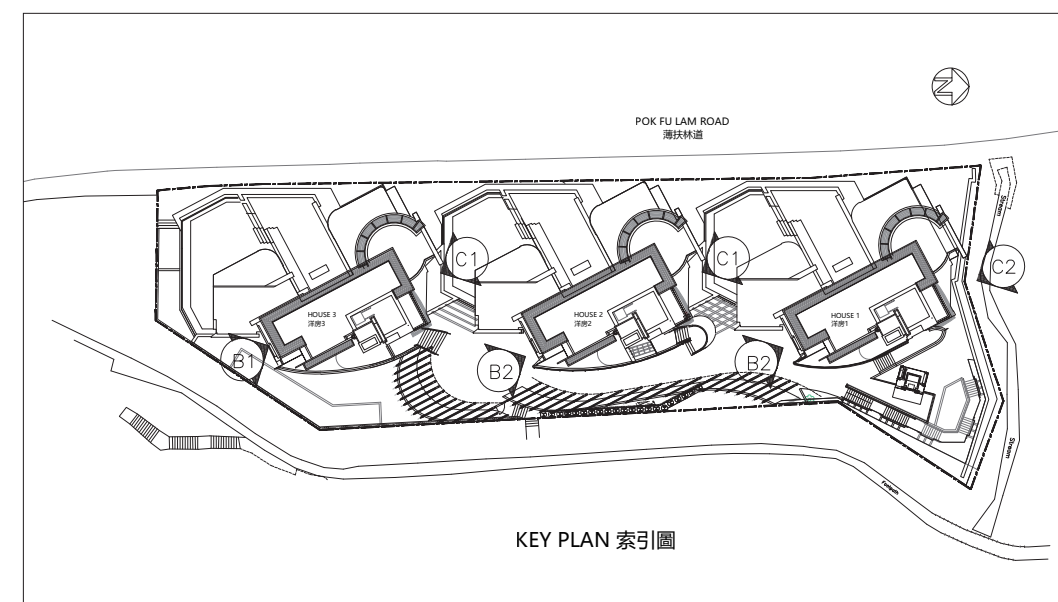
ELEVATION C2 (HOUSE 1)  
立面圖 C2 (洋房1)

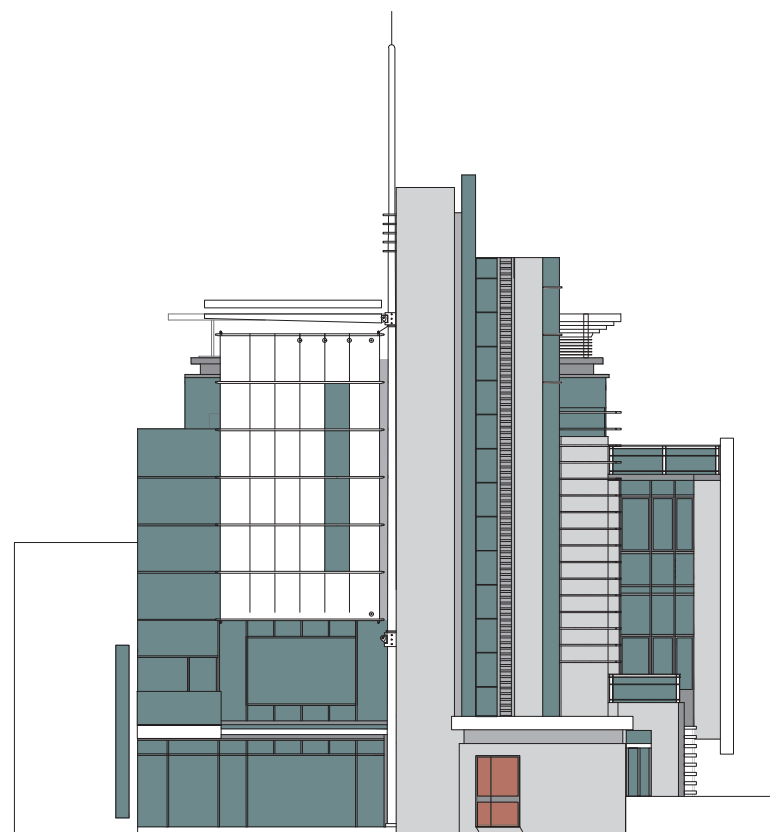
Authorized Person for the Development certified that the elevation shown on this plan:

1. are prepared on the basis of the approved Building Plans for the Development as of 30 October 2023; and
2. are in general accordance with the outward appearance of the Development.

發展項目的認可人士證明本圖所顯示的立面:

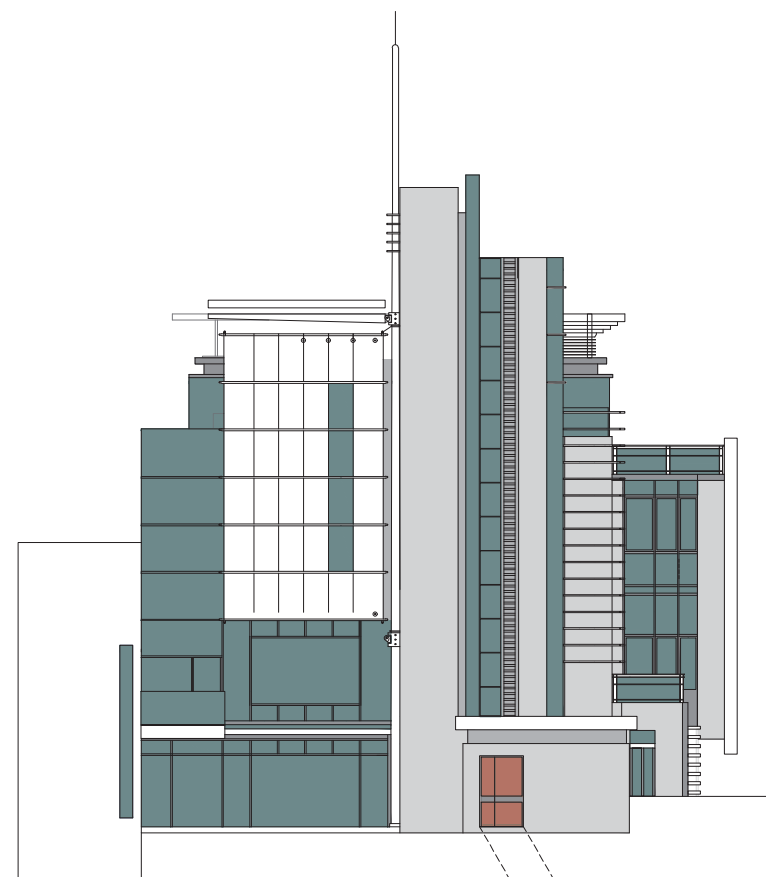
1. 以2023年10月30日的情況為準的發展項目的批准的建築圖則為基礎擬備;及
2. 大致上與發展項目的外觀一致。





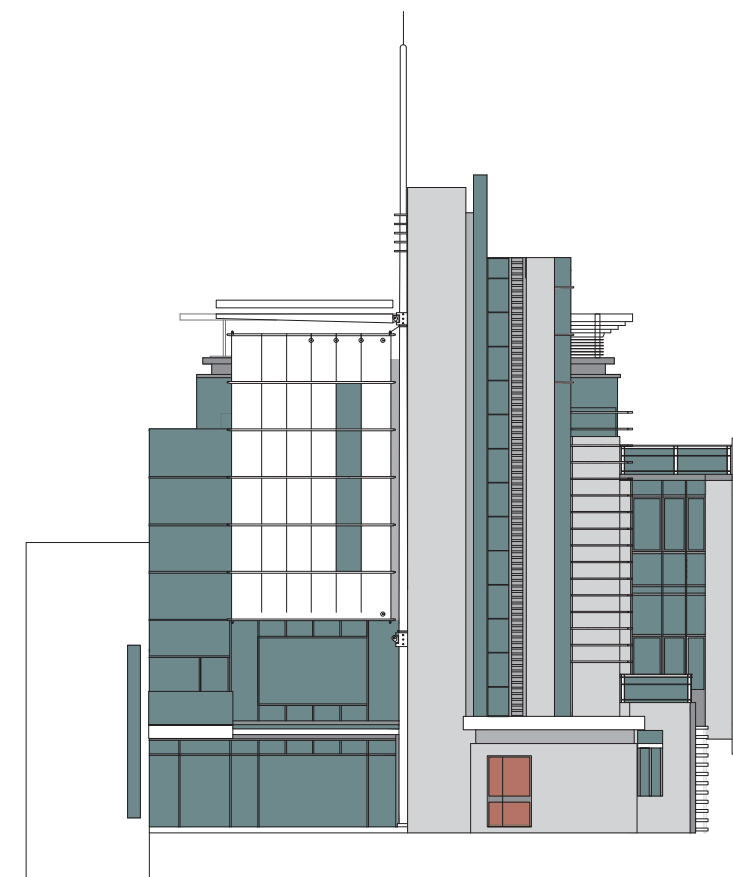
ELEVATION D1 (HOUSE 3)  
立面圖 D1 (洋房3)

As-is Elevation Plan\*  
現狀立面圖



ELEVATION D2 (HOUSE 2)  
立面圖 D2 (洋房2)

As-is Elevation Plan\*  
現狀立面圖



ELEVATION D3 (HOUSE 1)  
立面圖 D3 (洋房1)

Notes:

Authorized Person for the Development has certified that the elevation shown on the plans:-

1. are prepared on the basis of the approved Building Plans for the Development as of 30 October 2023; and
2. are in general accordance with the outward appearance of the Development.

\* This part of Houses 2 and 3 has been altered by way of designated exempted works, or exempted works under the Buildings Ordinance after completion of the Development, the latest condition of which are shown on the relevant as-in elevation plan. The alteration work(s) is as follows:

1. Replacement of timber door and door swing direction altered.

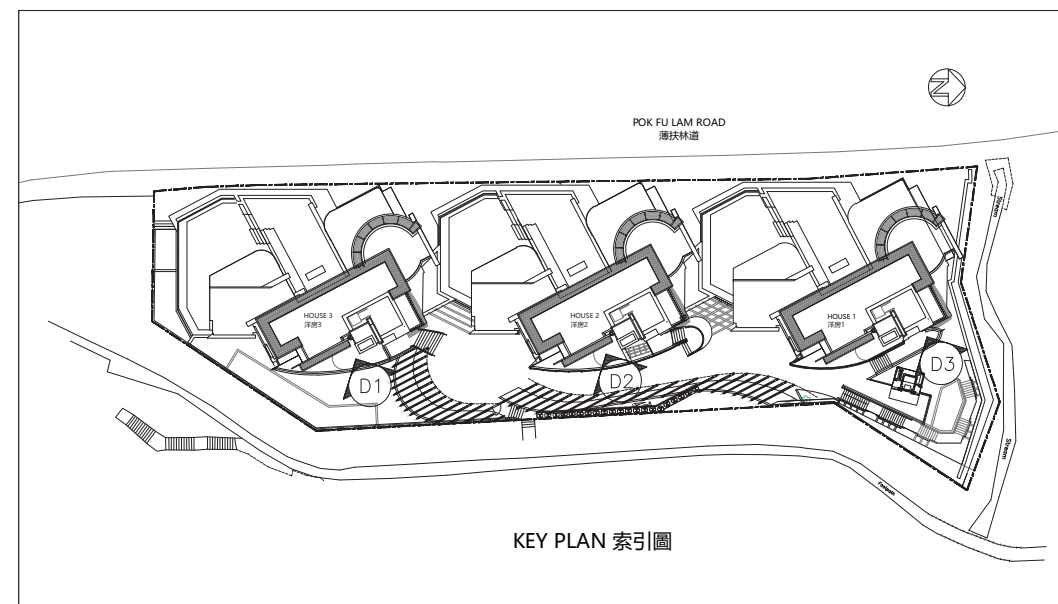
備註:

發展項目的認可人士已證明此等圖顯示的立面：

1. 以2023年10月30日的情況為準的發展項目的經批准的建築圖則為基礎擬備；及
2. 大致上與發展項目的外觀一致。

\* 洋房2及3的部分地方在發展項目落成後進行了指定豁免工程或獲《建築物條例》豁免的工程而有所改動，現狀請參閱有關現狀立面圖。該等改動如下：

1. 更換木門及開門方向更改。



KEY PLAN 索引圖