

FLOOR PLANS OF RESIDENTIAL PROPERTIES IN THE PHASE

期數的住宅物業的樓面平面圖

LEGEND OF TERMS AND ABBREVIATIONS FOR FLOOR PLANS:
樓面平面圖中所使用名詞及簡稱之圖例：

ACD AT X/F - X/F	= AUTO-CLOSING DOOR AT X/F - X/F	自動關閉式門於X樓至X樓
ACPF	= AIR-CONDITIONER PLATFORM	冷氣機平台
ACCESS PANEL FOR FILTRATION PLANT PIT BELOW	= ACCESS PANEL FOR FILTRATION PLANT PIT BELOW	供過濾機坑置下的檢修門
AD	= AIR DUCT	風管
AF	= ARCHITECTURAL FEATURE	建築裝飾
AF PIPE ENCLOSURE	= ARCHITECTURAL FEATURE PIPE ENCLOSURE	封閉式建築裝飾管道
AW AT X/F - X/F	= ACOUSTIC WINDOW (BAFFLE TYPE) AT X/F - X/F	減音窗(擋音式) 於X樓至X樓
BAL	= BALCONY	露台
BATH	= BATHROOM	浴室
BATH 1	= BATHROOM 1	浴室1
BATH 3	= BATHROOM 3	浴室3
BR1	= BEDROOM 1	睡房1
BR2	= BEDROOM 2	睡房2
BR3	= BEDROOM 3	睡房3
COVER FOR BAL BELOW	= COVER FOR BALCONY BELOW	露台上蓋置下

1. Symbols of fittings and fitments shown on the floor plans, such as bathtubs, sink, water closets, shower, sink counter, etc. are architectural symbols retrieved from the latest approved general building plans and are for general indication only.
2. There may be architectural features and exposed pipes/ductings on external walls of some of the floors.
3. There may be ceiling bulkheads and sunken slab at living room, dining room, bedrooms, store, kitchen, bathroom, lavatory, utility room and/or corridors of some units for the air-conditioning system and/or mechanical and electrical services.
4. The internal ceiling height within some units may vary due to structural, architectural and/or decoration design variations.
5. There may be communal pipes and/or mechanical and electrical services within the balcony, utility platform, verandah, flat roof and roof of some units.
6. Balconies, utility platforms and verandah are non-enclosed areas.

1. 樓面平面圖上所顯示的形象裝置符號，例如浴缸、洗滌盆、坐廁、花灑、洗滌盆櫃等乃摘自最新的經批准的建築圖則，只作一般性標誌。
2. 部份樓層外牆或設有建築裝飾及外露喉管／管道。
3. 部份單位之客廳、飯廳、睡房、士多房、廚房、浴室、洗手間、儲物間及／或走廊，或設有假天花及上層跌級樓板，內裝有冷氣系統及／或其他機電設備。
4. 部份單位之天花高度將會因應結構、建築設計及／或裝修設計上的需要而有差異。
5. 部份單位之露台、工作平台、陽台、平台及天台內或裝有公用喉管及／或其他機電設備。
6. 露台、工作平台及陽台為不可封閉的地方。

FLOOR PLANS OF RESIDENTIAL PROPERTIES IN THE PHASE

期數的住宅物業的樓面平面圖

LEGEND OF TERMS AND ABBREVIATIONS FOR FLOOR PLANS:
樓面平面圖中所使用名詞及簡稱之圖例：

COVER FOR U.P. BELOW	= COVER FOR UTILITY PLATFORM BELOW	工作平台上蓋置下
DN	= DOWN	落
ED	= EXHAUST DUCT	排氣管
ELE	= ELECTRICAL CABINET	電掣櫃
ELE FOR X/F & X/F ONLY	= ELECTRICAL CABINET FOR X/F AND X/F ONLY	供X樓及X樓之電掣櫃
ELV	= EXTRA-LOW VOLTAGE CABLE DUCT	特低壓電線槽
EMR	= ELECTRIC METER ROOM	電錶房
FAM	= FAMILY ROOM	家庭房
FAN ROOM FOR RSMRR	= FAN ROOM FOR REFUSE STORAGE AND MATERIAL RECOVERY ROOM	垃圾及物料回收室風機房
FG WITH MW AT X/F - X/F	= FIXED GLAZING WITH MAINTENANCE WINDOW AT X/F - X/F	固定玻璃(包括維修窗)於X樓至X樓
FIREMAN'S LIFT LOBBY	= FIREMAN'S LIFT LOBBY	消防員升降機大堂
FLAT ROOF	= FLAT ROOF	平台
FLUSHING WATER PUMP ROOM	= FLUSHING WATER PUMP ROOM	沖廁水泵房
HR	= HOSE REEL	消防喉轆
KIT	= KITCHEN	廚房

1. Symbols of fittings and fitments shown on the floor plans, such as bathtubs, sink, water closets, shower, sink counter, etc. are architectural symbols retrieved from the latest approved general building plans and are for general indication only.
2. There may be architectural features and exposed pipes/ductings on external walls of some of the floors.
3. There may be ceiling bulkheads and sunken slab at living room, dining room, bedrooms, store, kitchen, bathroom, lavatory, utility room and/or corridors of some units for the air-conditioning system and/or mechanical and electrical services.
4. The internal ceiling height within some units may vary due to structural, architectural and/or decoration design variations.
5. There may be communal pipes and/or mechanical and electrical services within the balcony, utility platform, verandah, flat roof and roof of some units.
6. Balconies, utility platforms and verandah are non-enclosed areas.

1. 樓面平面圖上所顯示的形象裝置符號，例如浴缸、洗滌盆、坐廁、花灑、洗滌盆櫃等乃摘自最新的經批准的建築圖則，只作一般性標誌。
2. 部份樓層外牆或設有建築裝飾及外露喉管／管道。
3. 部份單位之客廳、飯廳、睡房、士多房、廚房、浴室、洗手間、儲物間及／或走廊，或設有假天花及上層跌級樓板，內裝有冷氣系統及／或其他機電設備。
4. 部份單位之天花高度將會因應結構、建築設計及／或裝修設計上的需要而有差異。
5. 部份單位之露台、工作平台、陽台、平台及天台內或裝有公用喉管及／或其他機電設備。
6. 露台、工作平台及陽台為不可封閉的地方。

FLOOR PLANS OF RESIDENTIAL PROPERTIES IN THE PHASE

期數的住宅物業的樓面平面圖

LEGEND OF TERMS AND ABBREVIATIONS FOR FLOOR PLANS:
樓面平面圖中所使用名詞及簡稱之圖例：

LAV	= LAVATORY	洗手間
LAWN	= LAWN	草地
LIFT	= LIFT	升降機
LIFT MACHINE ROOM	= LIFT MACHINE ROOM	升降機機房
LIFT SHAFT	= LIFT SHAFT	升降機槽
LIV / DIN	= LIVING & DINING ROOM	客飯廳
M BATH	= MASTER BATHROOM	主人浴室
MBR	= MASTER BEDROOM	主人睡房
ML AT H/L	= METAL LOUVRE AT HIGH LEVEL	金屬百葉於高位
P	= PLANTER	花槽
PD	= PIPE DUCT	管道槽
POOL	= POOL	游泳池
POWDER RM	= POWDER ROOM	化妝間
PRIVATE LIFT LOBBY	= PRIVATE LIFT LOBBY	私人升降機大堂
ROOF	= ROOF	天台

1. Symbols of fittings and fitments shown on the floor plans, such as bathtubs, sink, water closets, shower, sink counter, etc. are architectural symbols retrieved from the latest approved general building plans and are for general indication only.
2. There may be architectural features and exposed pipes/ductings on external walls of some of the floors.
3. There may be ceiling bulkheads and sunken slab at living room, dining room, bedrooms, store, kitchen, bathroom, lavatory, utility room and/or corridors of some units for the air-conditioning system and/or mechanical and electrical services.
4. The internal ceiling height within some units may vary due to structural, architectural and/or decoration design variations.
5. There may be communal pipes and/or mechanical and electrical services within the balcony, utility platform, verandah, flat roof and roof of some units.
6. Balconies, utility platforms and verandah are non-enclosed areas.

1. 樓面平面圖上所顯示的形象裝置符號，例如浴缸、洗滌盆、坐廁、花灑、洗滌盆櫃等乃摘自最新的經批准的建築圖則，只作一般性標誌。
2. 部份樓層外牆或設有建築裝飾及外露喉管／管道。
3. 部份單位之客廳、飯廳、睡房、士多房、廚房、浴室、洗手間、儲物間及／或走廊，或設有假天花及上層跌級樓板，內裝有冷氣系統及／或其他機電設備。
4. 部份單位之天花高度將會因應結構、建築設計及／或裝修設計上的需要而有差異。
5. 部份單位之露台、工作平台、陽台、平台及天台內或裝有公用喉管及／或其他機電設備。
6. 露台、工作平台及陽台為不可封閉的地方。

FLOOR PLANS OF RESIDENTIAL PROPERTIES IN THE PHASE

期數的住宅物業的樓面平面圖

LEGEND OF TERMS AND ABBREVIATIONS FOR FLOOR PLANS:
樓面平面圖中所使用名詞及簡稱之圖例：

RSMRR	= REFUSE STORAGE AND MATERIAL RECOVERY ROOM	垃圾及物料回收房
STO	= STORE	士多房
SUNSHADE	= SUNSHADE	遮陽棚
UP	= UP	上
U.P.	= UTILITY PLATFORM	工作平台
VOID	= VOID	中空
VOID ABOVE	= VOID ABOVE	中空置上
WIC	= WALK IN CLOSET	衣帽間
WMC	= WATER METER CABINET	水錶櫃

1. Symbols of fittings and fitments shown on the floor plans, such as bathtubs, sink, water closets, shower, sink counter, etc. are architectural symbols retrieved from the latest approved general building plans and are for general indication only.
2. There may be architectural features and exposed pipes/ductings on external walls of some of the floors.
3. There may be ceiling bulkheads and sunken slab at living room, dining room, bedrooms, store, kitchen, bathroom, lavatory, utility room and/or corridors of some units for the air-conditioning system and/or mechanical and electrical services.
4. The internal ceiling height within some units may vary due to structural, architectural and/or decoration design variations.
5. There may be communal pipes and/or mechanical and electrical services within the balcony, utility platform, verandah, flat roof and roof of some units.
6. Balconies, utility platforms and verandah are non-enclosed areas.

1. 樓面平面圖上所顯示的形象裝置符號，例如浴缸、洗滌盆、坐廁、花灑、洗滌盆櫃等乃摘自最新的經批准的建築圖則，只作一般性標誌。
2. 部份樓層外牆或設有建築裝飾及外露喉管／管道。
3. 部份單位之客廳、飯廳、睡房、士多房、廚房、浴室、洗手間、儲物間及／或走廊，或設有假天花及上層跌級樓板，內裝有冷氣系統及／或其他機電設備。
4. 部份單位之天花高度將會因應結構、建築設計及／或裝修設計上的需要而有差異。
5. 部份單位之露台、工作平台、陽台、平台及天台內或裝有公用喉管及／或其他機電設備。
6. 露台、工作平台及陽台為不可封閉的地方。

FLOOR PLANS OF RESIDENTIAL PROPERTIES IN THE PHASE

期數的住宅物業的樓面平面圖

		Floor 樓層	Flat 單位	
			A	B
TOWER 7 第7座	Floor-to-floor height of each residential property (mm) 每個住宅物業的層與層之間的高度（毫米）	2/F-3/F, 5/F-12/F & 15/F-22/F 2樓至3樓、5樓至12樓 及 15樓至22樓	2850, 2950, 3200, 3300	2850, 2950, 3200, 3300
		23/F & 25/F 23樓 及 25樓	2950, 3050, 3300, 3400	2950, 3050, 3300, 3400
		26/F 26樓	3150, 3200, 3500	3150, 3200, 3400, 3500
	The thickness of the floor slabs (excluding plaster) of each residential property (mm) 每個住宅物業的樓板的厚度(不包括灰泥)（毫米）	2/F-3/F, 5/F-12/F, 15/F-23/F & 25/F 2樓至3樓、5樓至12樓、15樓至23樓 及 25樓	150, 175	150, 175
		26/F 26樓	150, 170, 200	150, 170, 200

The internal areas of the residential properties on the upper floors will generally be slightly larger than those on the lower floors because of the reducing thickness of the structural walls on the upper floors. (This does not apply to the residential properties in the Phase because the design of the Phase does not involve reducing thickness of structural walls of residential properties on the upper floors and hence internal areas of those residential properties will not be increased.)

因住宅物業的較高樓層的結構牆的厚度遞減，較高樓層的內部面積，一般比較低樓層的內部面積稍大。(不適用於期數內的住宅物業，因為期數的設計是不牽涉較高樓層的住宅物業的結構牆的厚度遞減。因此，該等住宅物業的內部面積不會增加。)

Notes:

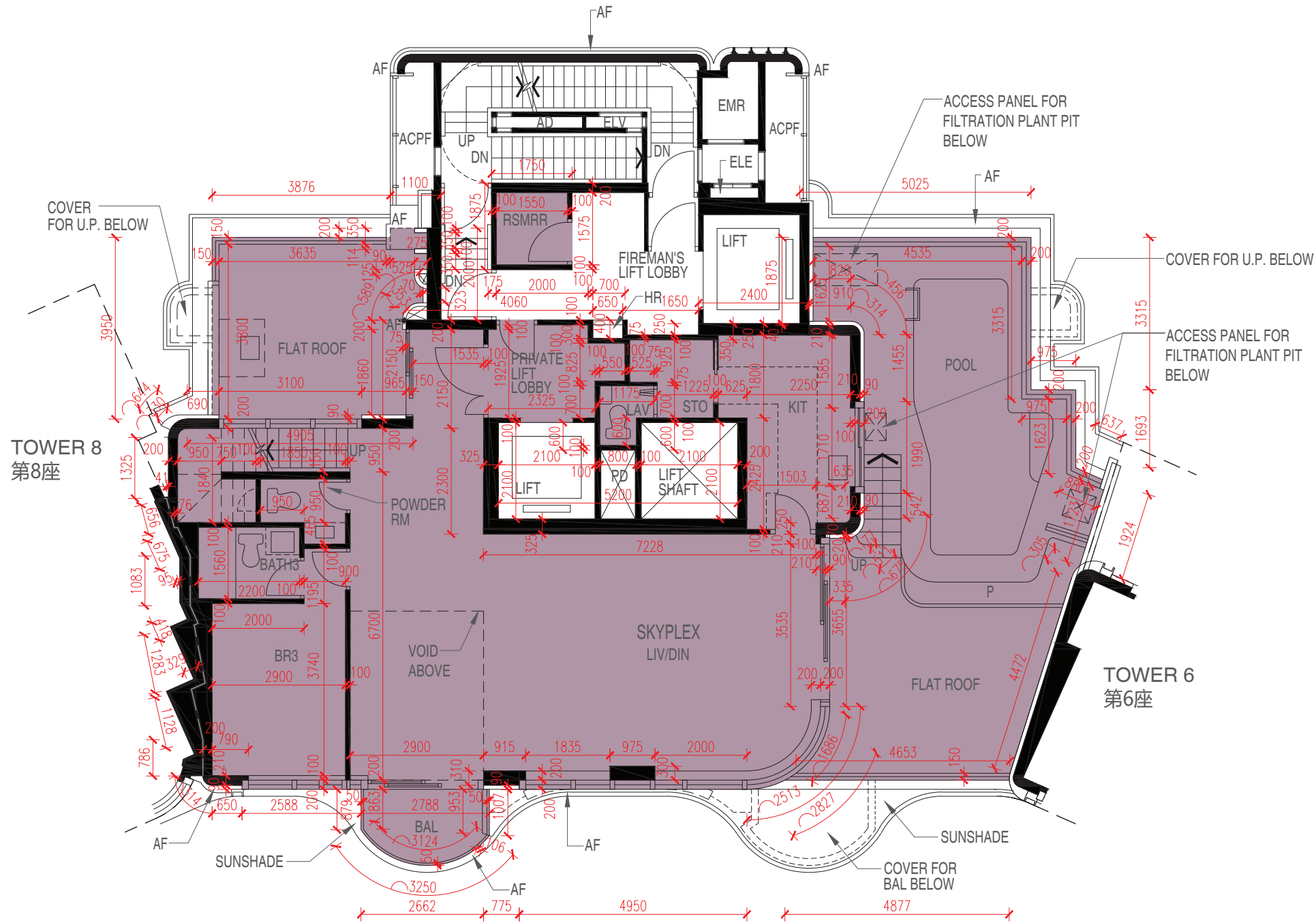
1. The dimensions of floor plans are all structural dimensions in millimetre.
2. Please refer to Pages AL01 to AL04 of this sales brochure for remarks, legend of the terms and abbreviations shown in the floor plan.
3. Dotted line in a residential unit with open kitchen (if any) delineates the extent of open kitchen area.

備註:

1. 樓面平面圖所列之尺寸數字為毫米標示的建築結構尺寸。
2. 樓面平面圖中顯示之附註、名詞及簡稱圖例請參閱本售樓說明書第AL01至AL04頁。
3. 設有開放式廚房的住宅單位(如有)內所顯示的虛線代表開放式廚房範圍。

期數的住宅物業的樓面平面圖

TOWER 7 27/F
第7座 27樓



FLOOR PLANS OF RESIDENTIAL PROPERTIES IN THE PHASE

期數的住宅物業的樓面平面圖

		Floor 樓層	Flat 單位
			SKYPLEX
TOWER 7 第7座	Floor-to-floor height of each residential property (mm) 每個住宅物業的層與層之間的高度（毫米）	27/F 27樓	3550, 3650, 3900, 4000, 6650
	The thickness of the floor slabs (excluding plaster) of each residential property (mm) 每個住宅物業的樓板的厚度(不包括灰泥)（毫米）	27/F 27樓	150, 175, 200, 225

The internal areas of the residential properties on the upper floors will generally be slightly larger than those on the lower floors because of the reducing thickness of the structural walls on the upper floors. (This does not apply to the residential properties in the Phase because the design of the Phase does not involve reducing thickness of structural walls of residential properties on the upper floors and hence internal areas of those residential properties will not be increased.)

因住宅物業的較高樓層的結構牆的厚度遞減，較高樓層的內部面積，一般比較低樓層的內部面積稍大。(不適用於期數內的住宅物業，因為期數的設計是不牽涉較高樓層的住宅物業的結構牆的厚度遞減。因此，該等住宅物業的內部面積不會增加。)

Notes:

1. The dimensions of floor plans are all structural dimensions in millimetre.
2. Please refer to Pages AL01 to AL04 of this sales brochure for remarks, legend of the terms and abbreviations shown in the floor plan.
3. Dotted line in a residential unit with open kitchen (if any) delineates the extent of open kitchen area.

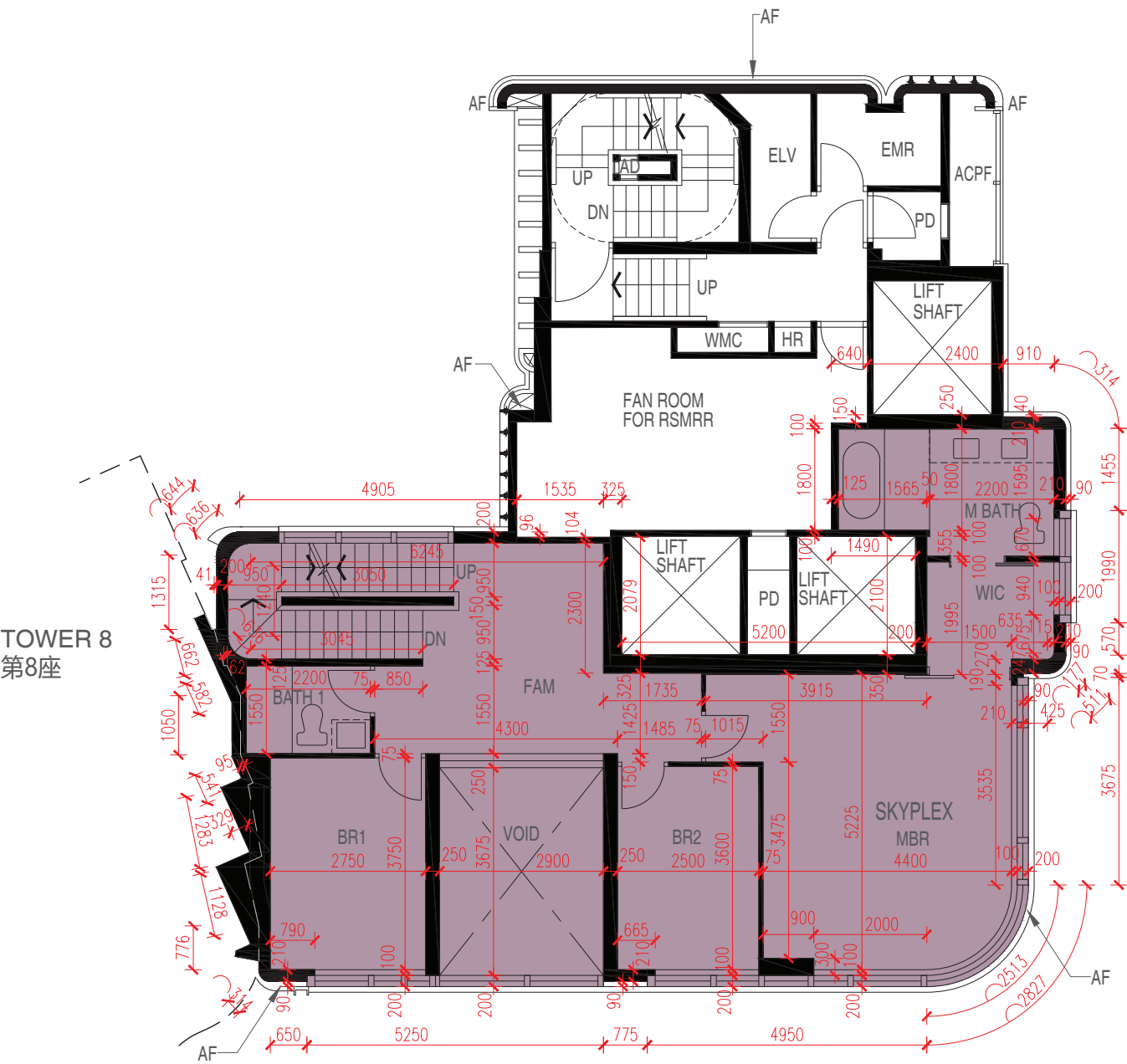
備註:

1. 樓面平面圖所列之尺寸數字為毫米標示的建築結構尺寸。
2. 樓面平面圖中顯示之附註、名詞及簡稱圖例請參閱本售樓說明書第AL01至AL04頁。
3. 設有開放式廚房的住宅單位(如有)內所顯示的虛線代表開放式廚房範圍。

FLOOR PLANS OF RESIDENTIAL PROPERTIES IN THE PHASE

期數的住宅物業的樓面平面圖

TOWER 7 28/F
第7座 28樓



FLOOR PLANS OF RESIDENTIAL PROPERTIES IN THE PHASE

期數的住宅物業的樓面平面圖

		Floor 樓層	Flat 單位
			SKYPLEX
TOWER 7 第7座	Floor-to-floor height of each residential property (mm) 每個住宅物業的層與層之間的高度（毫米）	28/F 28樓	3500
	The thickness of the floor slabs (excluding plaster) of each residential property (mm) 每個住宅物業的樓板的厚度(不包括灰泥)（毫米）	28/F 28樓	175, 225

The internal areas of the residential properties on the upper floors will generally be slightly larger than those on the lower floors because of the reducing thickness of the structural walls on the upper floors. (This does not apply to the residential properties in the Phase because the design of the Phase does not involve reducing thickness of structural walls of residential properties on the upper floors and hence internal areas of those residential properties will not be increased.)
因住宅物業的較高樓層的結構牆的厚度遞減，較高樓層的內部面積，一般比較低樓層的內部面積稍大。(不適用於期數內的住宅物業，因為期數的設計是不牽涉較高樓層的住宅物業的結構牆的厚度遞減。因此，該等住宅物業的內部面積不會增加。)

Notes:

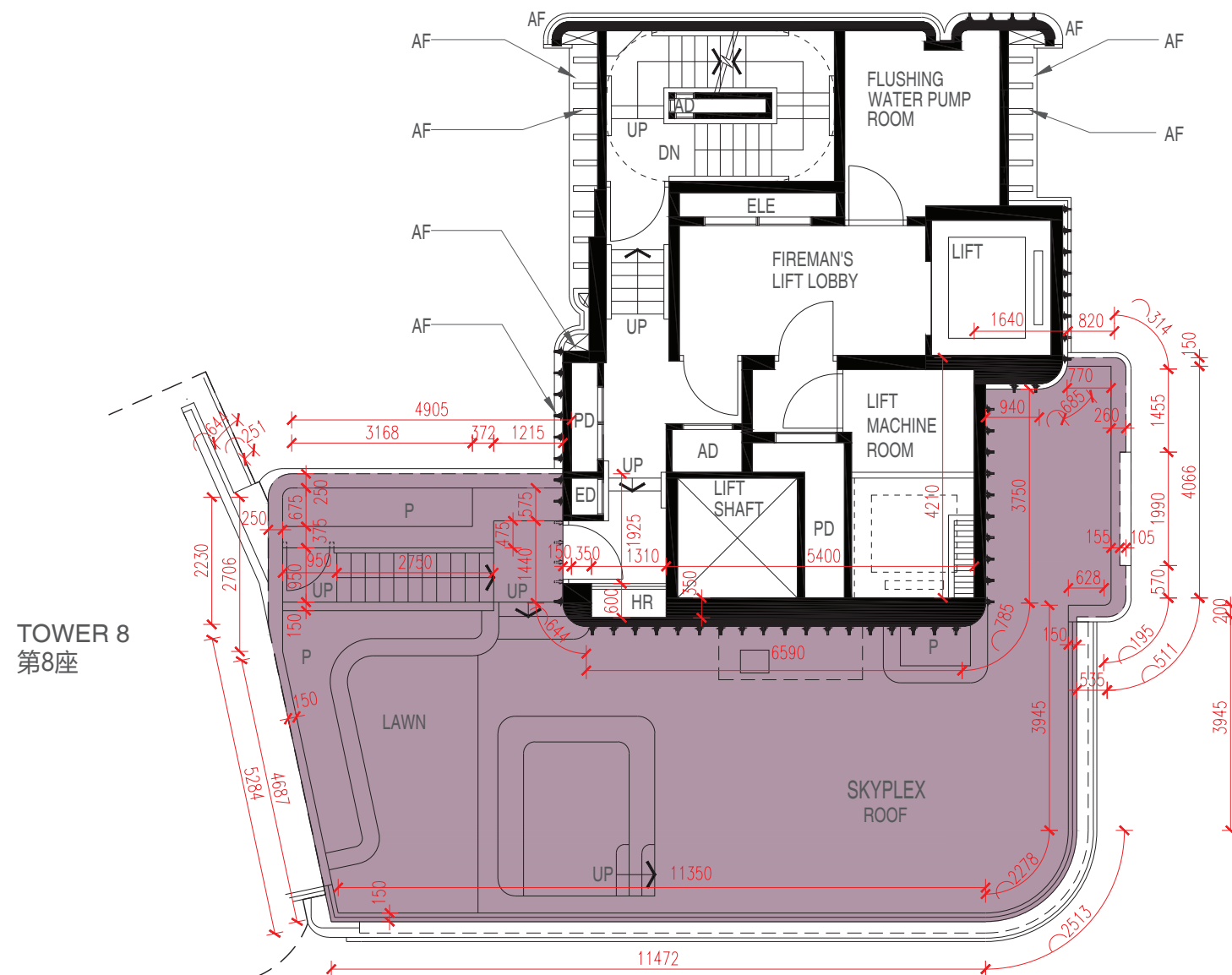
1. The dimensions of floor plans are all structural dimensions in millimetre.
2. Please refer to Pages AL01 to AL04 of this sales brochure for remarks, legend of the terms and abbreviations shown in the floor plan.
3. Dotted line in a residential unit with open kitchen (if any) delineates the extent of open kitchen area.

備註:

1. 樓面平面圖所列之尺寸數字為毫米標示的建築結構尺寸。
2. 樓面平面圖中顯示之附註、名詞及簡稱圖例請參閱本售樓說明書第AL01至AL04頁。
3. 設有開放式廚房的住宅單位(如有)內所顯示的虛線代表開放式廚房範圍。

FLOOR PLANS OF RESIDENTIAL PROPERTIES IN THE PHASE 期數的住宅物業的樓面平面圖

TOWER 7 ROOF
第7座 天台



FLOOR PLANS OF RESIDENTIAL PROPERTIES IN THE PHASE

期數的住宅物業的樓面平面圖

		Floor 樓層	Flat 單位
			SKYPLEX
TOWER 7 第7座	Floor-to-floor height of each residential property (mm) 每個住宅物業的層與層之間的高度（毫米）	ROOF 天台	Not applicable 不適用
	The thickness of the floor slabs (excluding plaster) of each residential property (mm) 每個住宅物業的樓板的厚度(不包括灰泥)（毫米）	ROOF 天台	Not applicable 不適用

The internal areas of the residential properties on the upper floors will generally be slightly larger than those on the lower floors because of the reducing thickness of the structural walls on the upper floors. (This does not apply to the residential properties in the Phase because the design of the Phase does not involve reducing thickness of structural walls of residential properties on the upper floors and hence internal areas of those residential properties will not be increased.)
因住宅物業的較高樓層的結構牆的厚度遞減，較高樓層的內部面積，一般比較低樓層的內部面積稍大。(不適用於期數內的住宅物業，因為期數的設計是不牽涉較高樓層的住宅物業的結構牆的厚度遞減。因此，該等住宅物業的內部面積不會增加。)

Notes:

- 1. The dimensions of floor plans are all structural dimensions in millimetre.
- 2. Please refer to Pages AL01 to AL04 of this sales brochure for remarks, legend of the terms and abbreviations shown in the floor plan.
- 3. Dotted line in a residential unit with open kitchen (if any) delineates the extent of open kitchen area.

備註:

- 1. 樓面平面圖所列之尺寸數字為毫米標示的建築結構尺寸。
- 2. 樓面平面圖中顯示之附註、名詞及簡稱圖例請參閱本售樓說明書第AL01至AL04頁。
- 3. 設有開放式廚房的住宅單位(如有)內所顯示的虛線代表開放式廚房範圍。