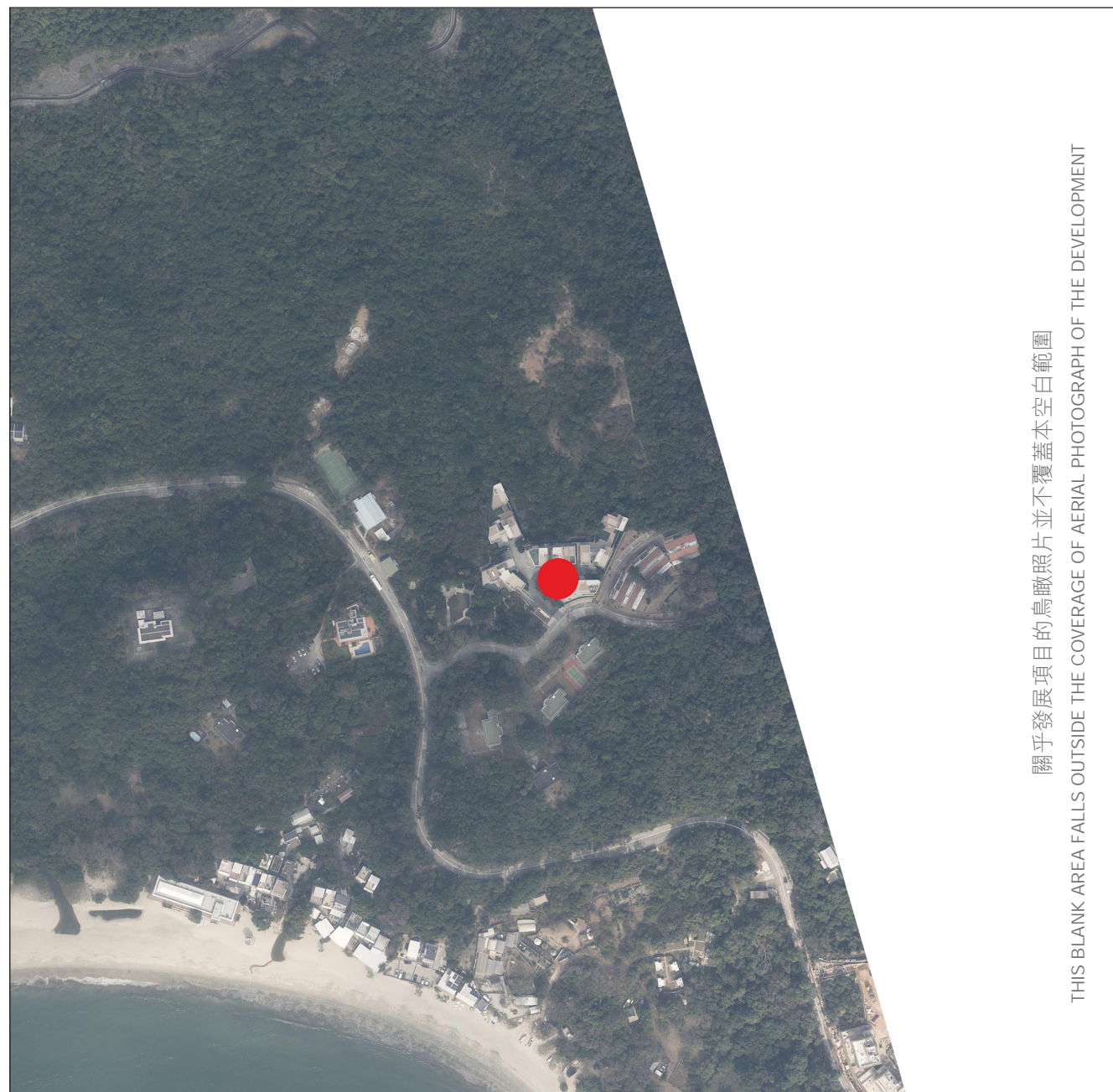


8

AERIAL PHOTOGRAPH OF THE DEVELOPMENT

發展項目的鳥瞰照片



關乎發展項目的鳥瞰照片並不覆蓋本空白範圍

THIS BLANK AREA FALLS OUTSIDE THE COVERAGE OF AERIAL PHOTOGRAPH OF THE DEVELOPMENT

● Location of the Development
發展項目的位置



Adopted from part of the aerial photograph taken by the Survey and Mapping Office, Lands Department at a flying height of 6,900 feet, photo No. E216648C, date of flight: 11 January 2024.

摘錄自地政總署測繪處在6,900呎的飛行高度拍攝之鳥瞰照片，照片編號E216648C，飛行日期：2024年1月11日。

Survey and Mapping Office, Lands Department, The Government of HKSAR © Copyright reserved – reproduction by permission only.

香港特別行政區政府地政總署測繪處 © 版權所有，未經許可，不得複製。

Notes :

- Copy of the aerial photograph of the Development is available for free inspection at the sales office during opening hours.
- The aerial photograph may show more than the area required under the Residential Properties (First-hand Sales) Ordinance due to technical reason that the boundary of the Development is irregular.

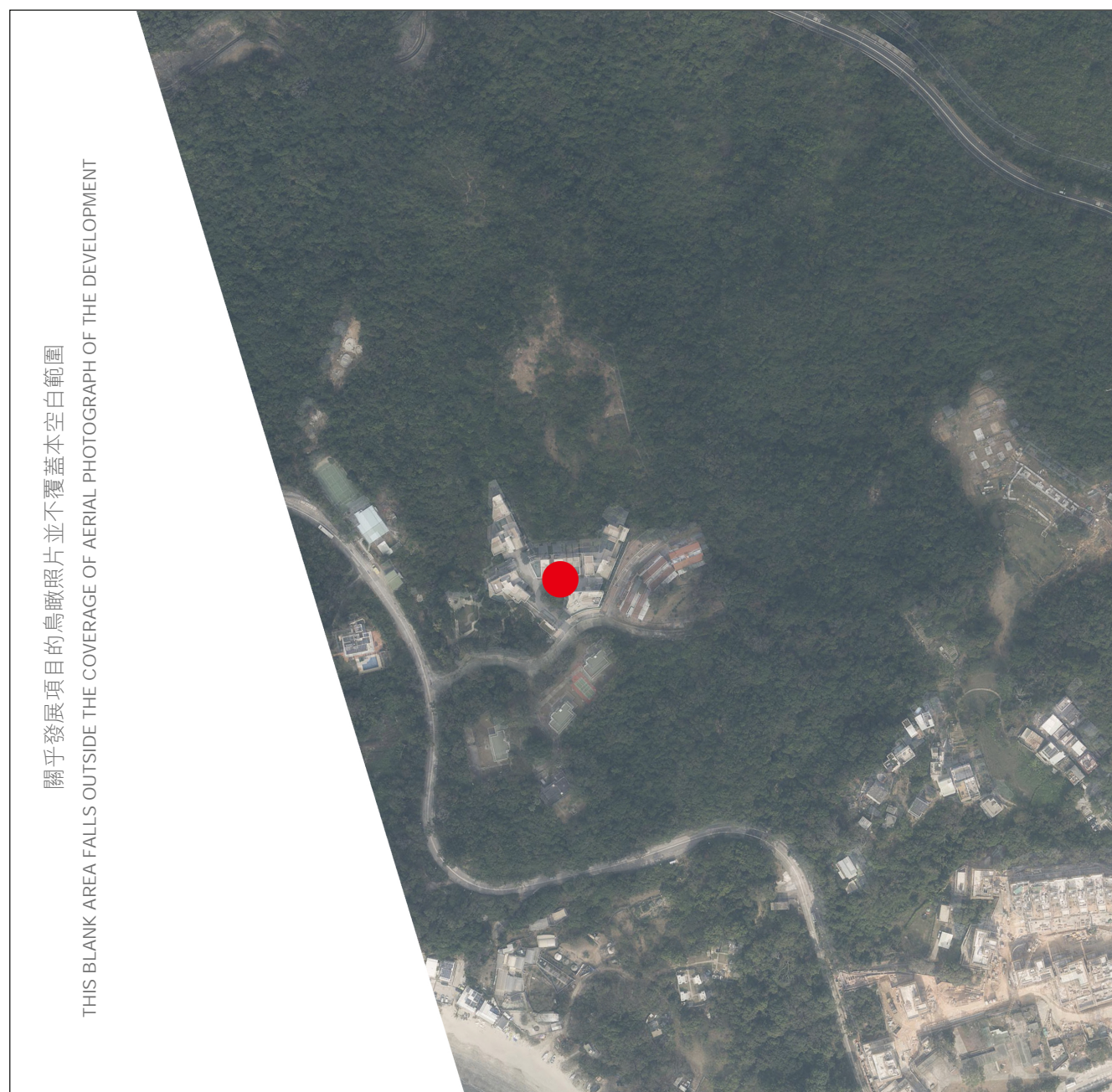
備註：

- 發展項目的鳥瞰照片之副本可於售樓處開放時間內免費查閱。
- 由於發展項目的邊界不規則的技術原因，此照片所顯示的範圍可能超過《一手住宅物業銷售條例》所規定的範圍。

8

AERIAL PHOTOGRAPH OF THE DEVELOPMENT

發展項目的鳥瞰照片



關乎發展項目的鳥瞰照片並不覆蓋本空白範圍

THIS BLANK AREA FALLS OUTSIDE THE COVERAGE OF AERIAL PHOTOGRAPH OF THE DEVELOPMENT

● Location of the Development
發展項目的位置



Adopted from part of the aerial photograph taken by the Survey and Mapping Office, Lands Department at a flying height of 6,900 feet, photo No. E216650C, date of flight: 11 January 2024.

摘錄自地政總署測繪處在6,900呎的飛行高度拍攝之鳥瞰照片，照片編號E216650C，飛行日期：2024年1月11日。

Survey and Mapping Office, Lands Department, The Government of HKSAR © Copyright reserved – reproduction by permission only.

香港特別行政區政府地政總署測繪處 © 版權所有，未經許可，不得複製。

Notes :

- Copy of the aerial photograph of the Development is available for free inspection at the sales office during opening hours.
- The aerial photograph may show more than the area required under the Residential Properties (First-hand Sales) Ordinance due to technical reason that the boundary of the Development is irregular.

備註：

- 發展項目的鳥瞰照片之副本可於售樓處開放時間內免費查閱。
- 由於發展項目的邊界不規則的技術原因，此照片所顯示的範圍可能超過《一手住宅物業銷售條例》所規定的範圍。