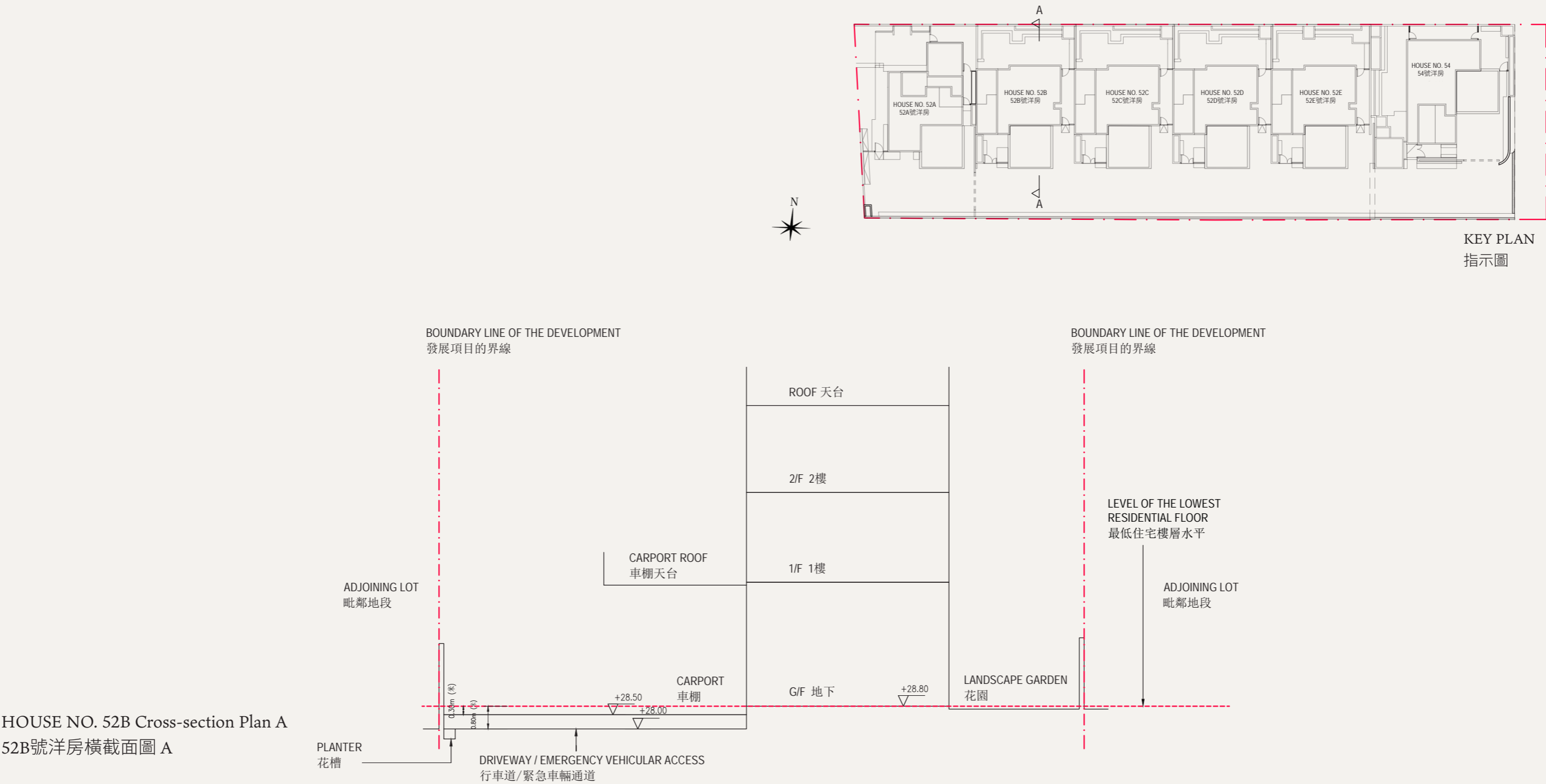


19 CROSS-SECTION PLAN OF BUILDING IN THE DEVELOPMENT 發展項目中的建築物的橫截面圖



Notes:

¹ ▽ Denotes height (in metres) above the Hong Kong Principal Datum.

² - - - Dotted line denotes the level of the lowest residential floor.

³ The part of Driveway / Emergency Vehicular Access adjacent to the building is 28.00 metres to 28.50 metres above the Hong Kong Principal Datum.

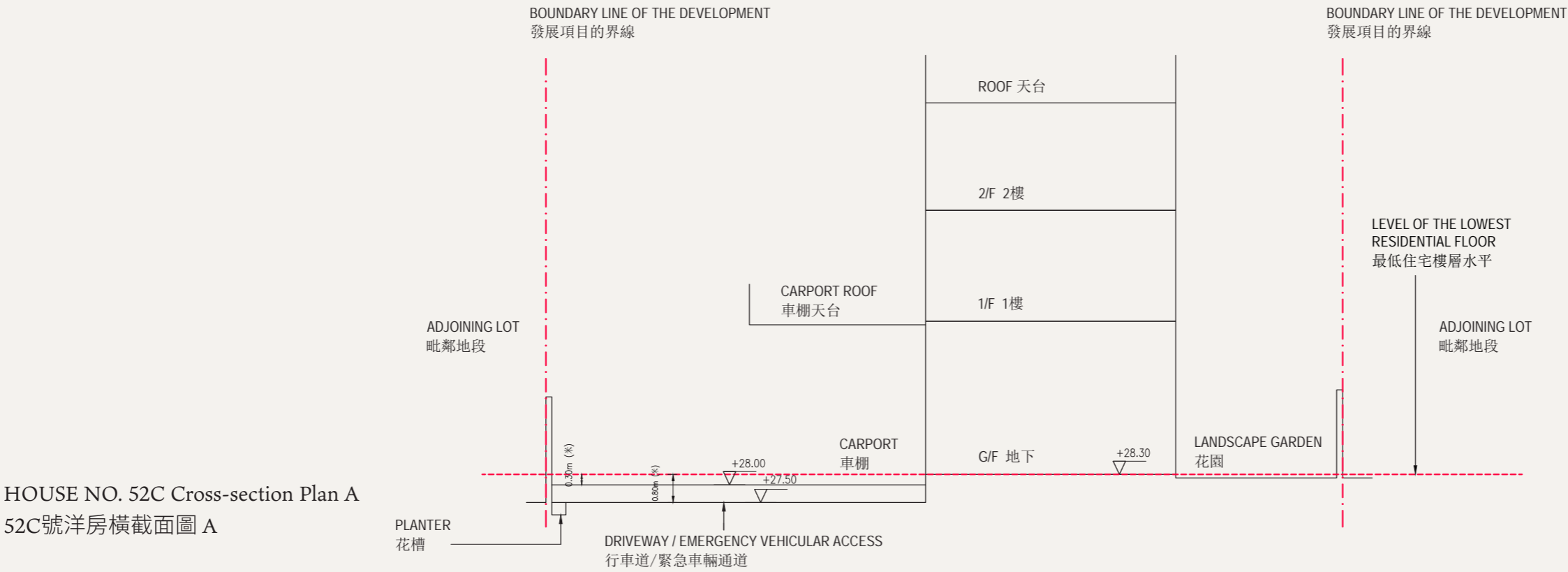
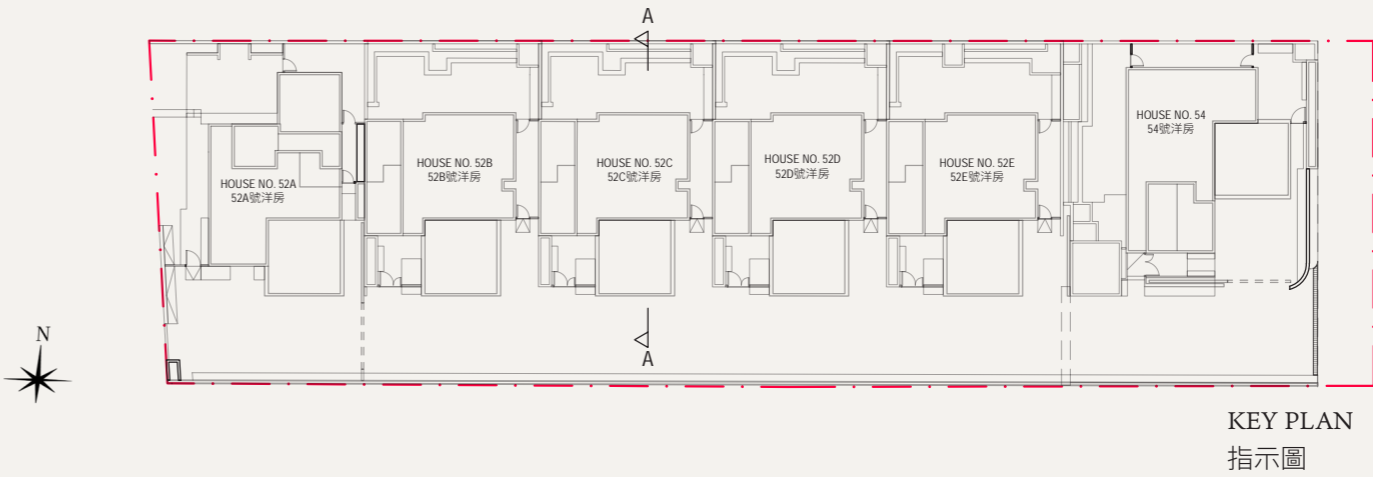
備註：

¹ ▽ 代表香港水平基準以上的高度(米)。

² - - - 虛線代表建築物之最低住宅樓層水平。

³ 毗連建築物的一段行車道/緊急車輛通道為香港主水平基準以上28.00米至28.50米。

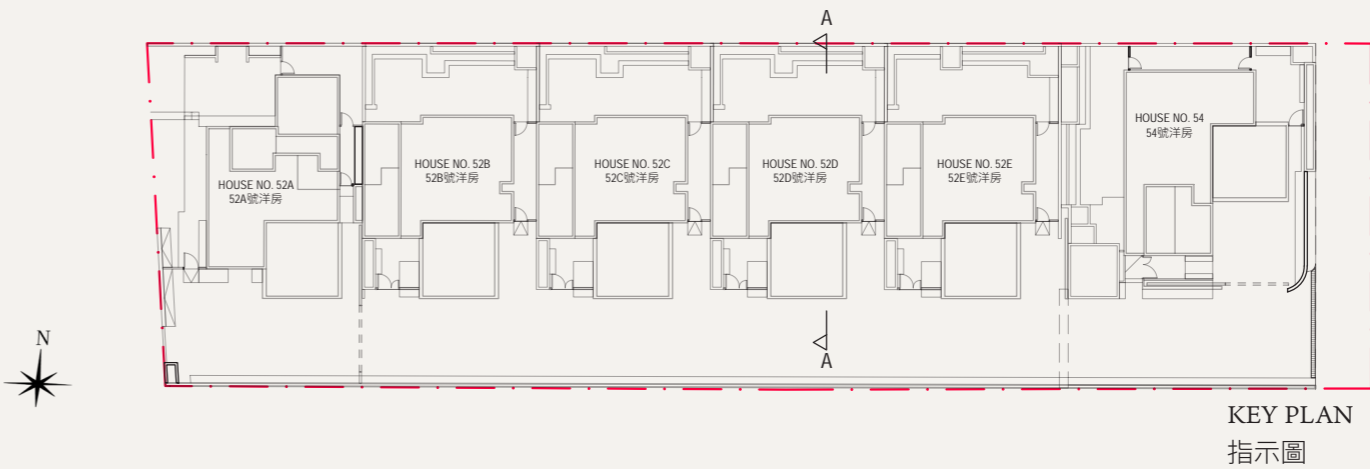
19 CROSS-SECTION PLAN OF BUILDING IN THE DEVELOPMENT 發展項目中的建築物的橫截面圖



- Notes:
- ¹ ▽ Denotes height (in metres) above the Hong Kong Principal Datum.
 - ² - - - Dotted line denotes the level of the lowest residential floor.
 - ³ The part of Driveway / Emergency Vehicular Access adjacent to the building is 27.50 metres to 28.00 metres above the Hong Kong Principal Datum.

- 備註：
- ¹ ▽ 代表香港水平基準以上的高度(米)。
 - ² - - - 虛線代表建築物之最低住宅樓層水平。
 - ³ 毗連建築物的一段行車道/緊急車輛通道為香港主水平基準以上27.50米至28.00米。

19 CROSS-SECTION PLAN OF BUILDING IN THE DEVELOPMENT 發展項目中的建築物的橫截面圖

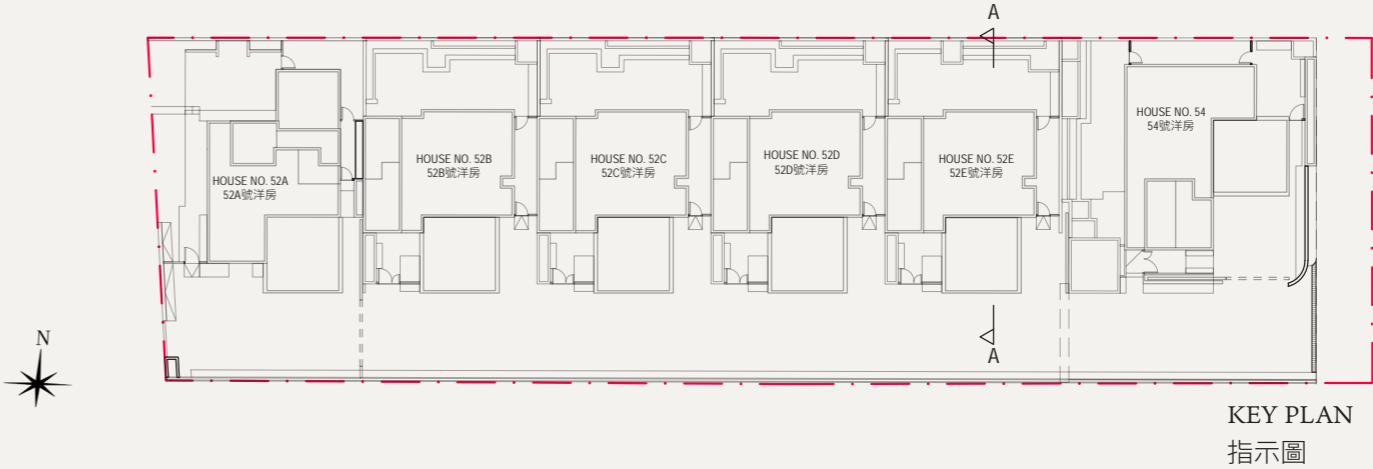


HOUSE NO. 52D Cross-section Plan A
52D號洋房橫截面圖 A

- Notes:
- ¹ ▽ Denotes height (in metres) above the Hong Kong Principal Datum.
 - ² - - - Dotted line denotes the level of the lowest residential floor.
 - ³ The part of Driveway / Emergency Vehicular Access adjacent to the building is 27.00 metres to 27.50 metres above the Hong Kong Principal Datum.

- 備註：
- ¹ ▽ 代表香港水平基準以上的高度(米)。
 - ² - - - 虛線代表建築物之最低住宅樓層水平。
 - ³ 毗連建築物的一段行車道/緊急車輛通道為香港主水平基準以上27.00米至27.50米。

19 CROSS-SECTION PLAN OF BUILDING IN THE DEVELOPMENT 發展項目中的建築物的橫截面圖

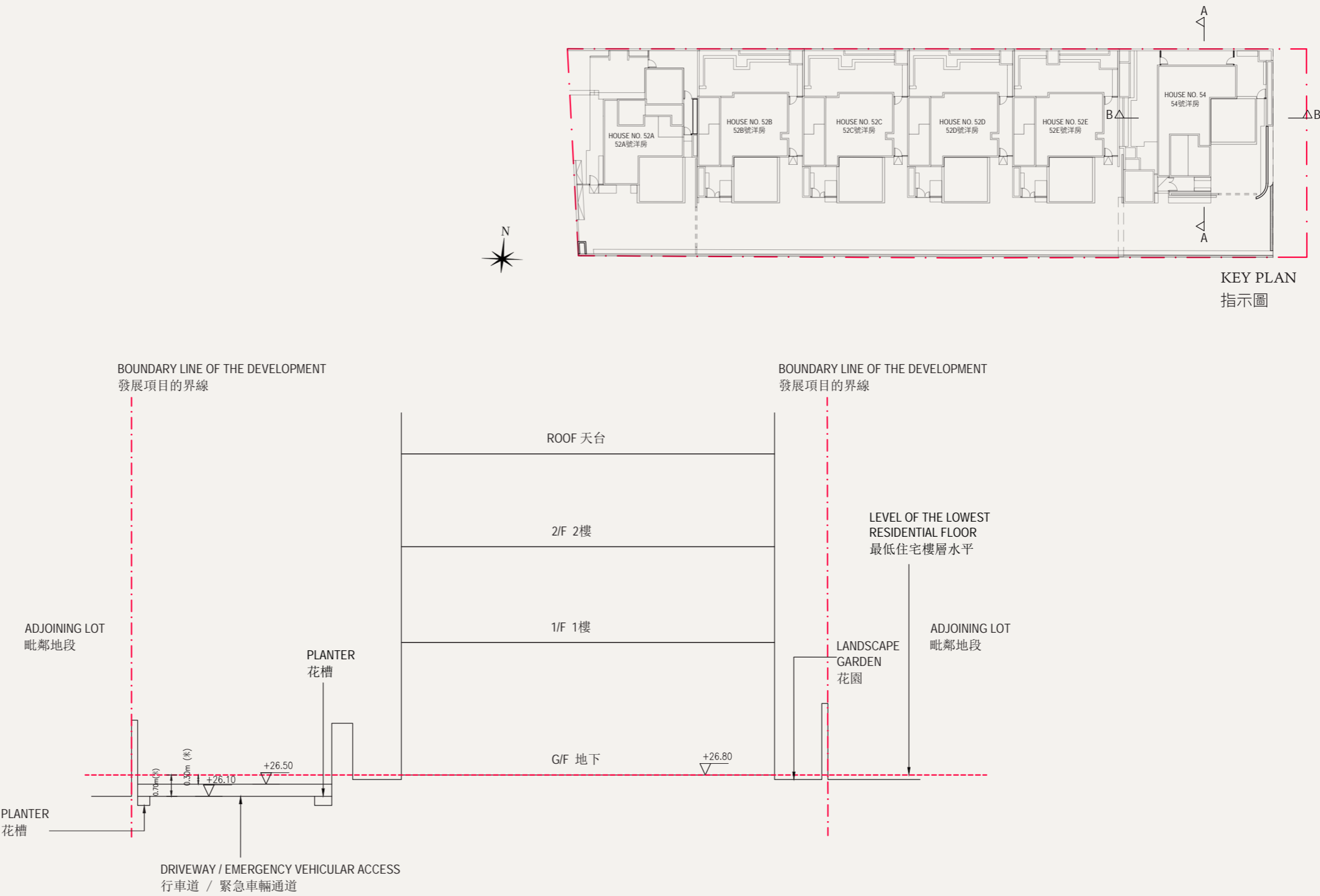


HOUSE NO. 52E Cross-section Plan A
52E號洋房橫截面圖 A

- Notes:
- Denotes height (in metres) above the Hong Kong Principal Datum.
 - Dotted line denotes the level of the lowest residential floor.
 - The part of Driveway / Emergency Vehicular Access adjacent to the building is 26.50 metres to 27.00 metres above the Hong Kong Principal Datum.

- 備註：
- 代表香港水平基準以上的高度(米)。
 - 虛線代表建築物之最低住宅樓層水平。
 - 毗連建築物的一段行車道/緊急車輛通道為香港主水平基準以上26.50米至27.00米。

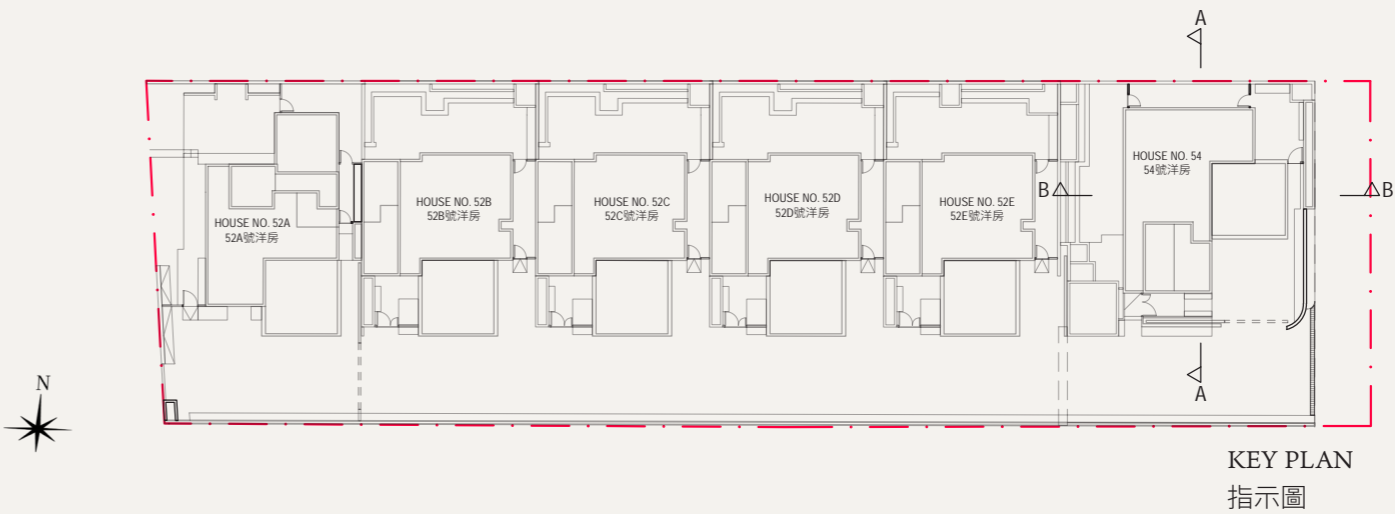
19 CROSS-SECTION PLAN OF BUILDING IN THE DEVELOPMENT 發展項目中的建築物的橫截面圖



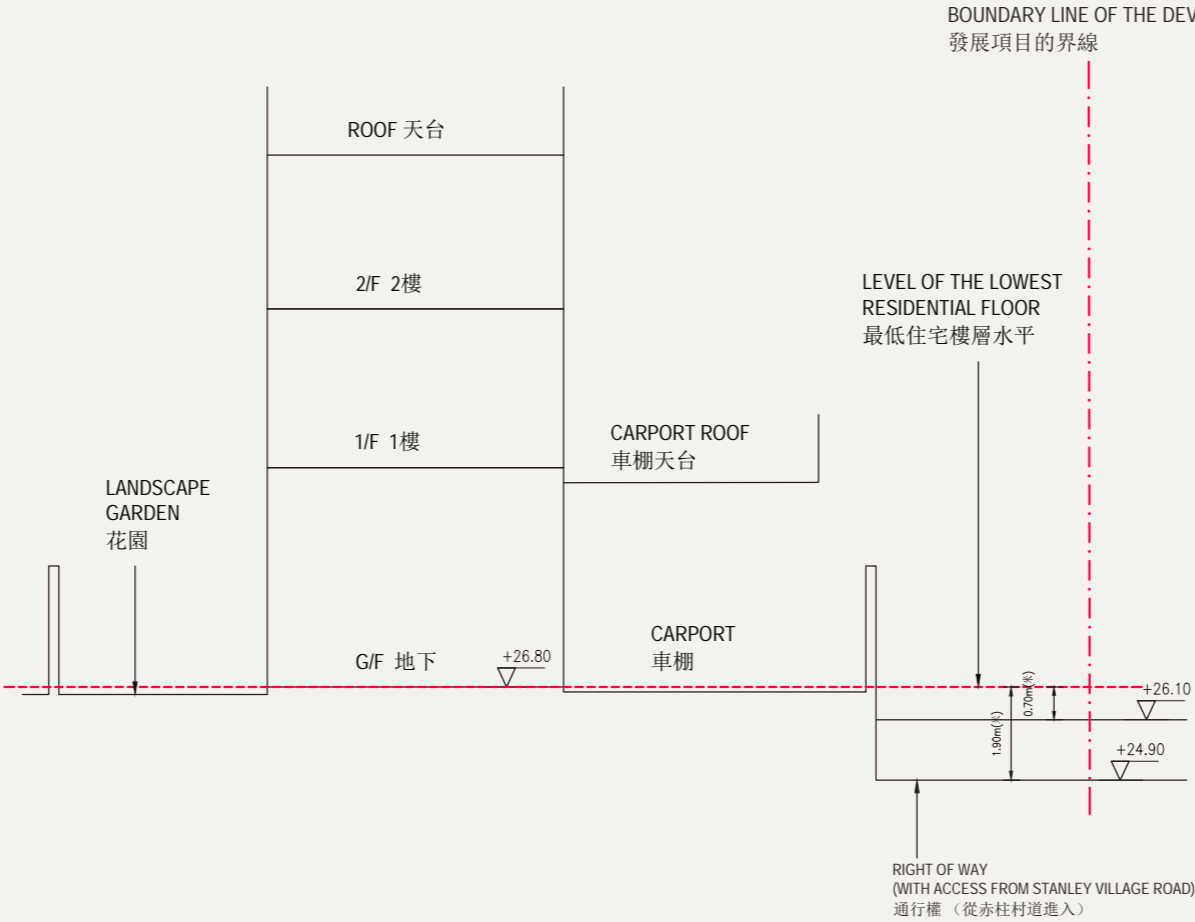
- Notes:
- ¹ ▽ Denotes height (in metres) above the Hong Kong Principal Datum.
 - ² - - - Dotted line denotes the level of the lowest residential floor.
 - ³ The part of Driveway / Emergency Vehicular Access adjacent to the building is 26.10 metres to 26.50 metres above the Hong Kong Principal Datum.

- 備註：
- ¹ ▽ 代表香港水平基準以上的高度(米)。
 - ² - - - 虛線代表建築物之最低住宅樓層水平。
 - ³ 毗連建築物的一段行車道/緊急車輛通道為香港主水平基準以上26.10米至26.50米。

19 CROSS-SECTION PLAN OF BUILDING IN THE DEVELOPMENT 發展項目中的建築物的橫截面圖



HOUSE NO. 54 Cross-section Plan B
54號洋房橫截面圖 B



- Notes:
- ¹ ▽ Denotes height (in metres) above the Hong Kong Principal Datum.
 - ² - - - Dotted line denotes the level of the lowest residential floor.
 - ³ The part of Right of way (with access from Stanley Village Road) adjacent to the building is 24.90 metres to 26.10 metres above the Hong Kong Principal Datum.

- 備註：
- ¹ ▽ 代表香港水平基準以上的高度(米)。
 - ² - - - 虛線代表建築物之最低住宅樓層水平。
 - ³ 毗連建築物的一段通行權(從赤柱村道進入)為香港主水平基準以上24.90米至26.10米。