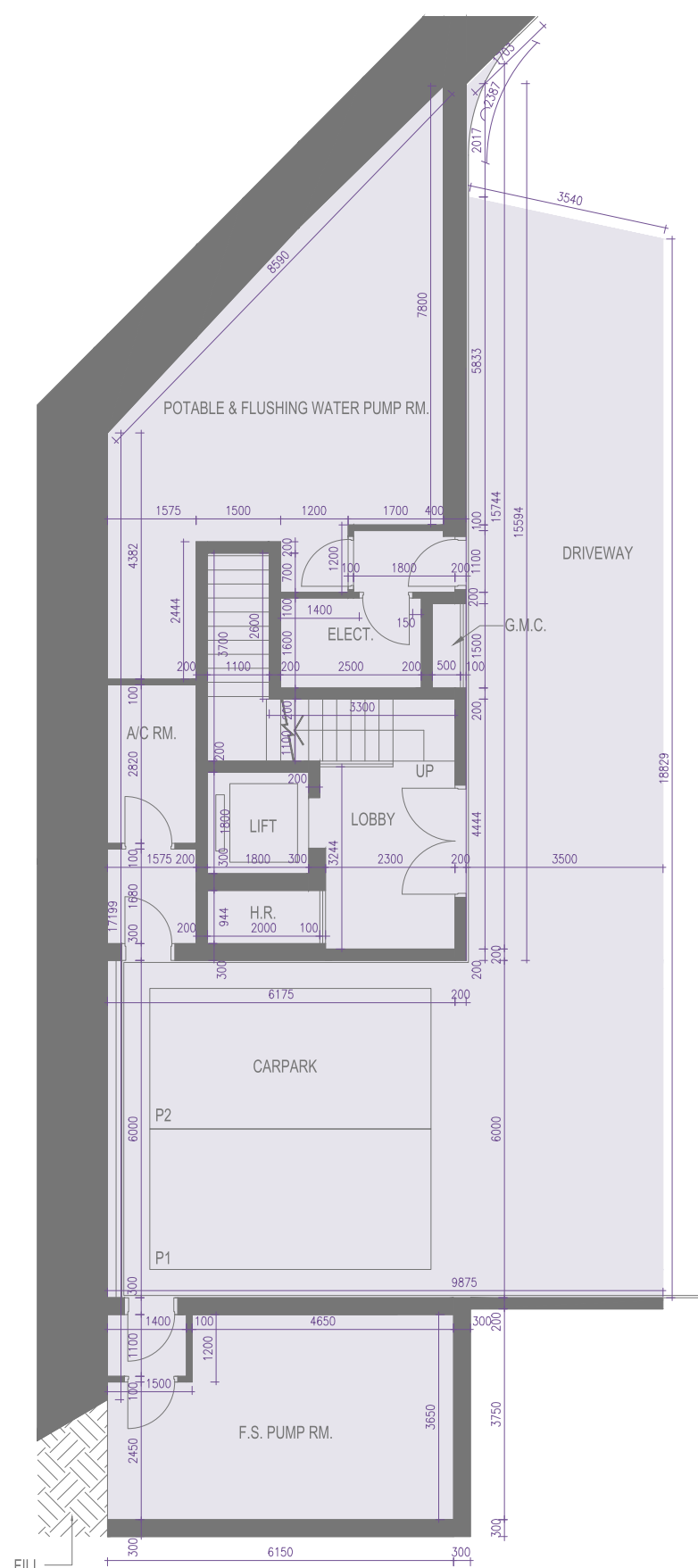


Legend of Terms and Abbreviations used on Floor Plans  
平面圖中所使用名詞及簡稱之圖例

A/C Platform = Air-conditioning Platform	空調機平台
A/C Rm. = Air-conditioning Plant Room	空調機房
Balcony	露台
Bathroom 1/2/3	浴室 1/2/3
Bedroom 1/2/3	套房 1/2/3
Canopy	簷篷
Carpark	停車位
Closet 1/2/3	衣帽間 1/2/3
Corridor	走廊
Dining Room	飯廳
DN = Down	向下
Elect. = Electrical Room	電錶房
Family Room	起居室
F.H. = Fire Hydrant	消防栓
Fill	回填
Flat Roof	平台
Foyer	前廳
F.S. Pump Rm. = Fire Services Pump Room	消防泵房
F.S. Fibre Glass Water Tank = Fire Services Fibre Glass Water Tank	消防玻璃纖維水缸
Garden	花園
G.M.C. = Gas Meter Cabinet	煤氣錶箱
Guest Closet	客人衣帽間
H.R. = Hose Reel	消防喉轆
Kitchen	廚房
Lift	升降機
Lift Hall	升降機大堂
Living Room	客廳
Lobby	大堂
Master Bath 1/2 = Master Bathroom 1/2	主人浴室 1/2
Master Bedroom	主人寢室
Master Closet 1/2	主人衣帽間 1/2/3
P.D. = Pipe Duct	管槽
Pitch Roof	斜屋頂
Planter	花槽
Potable & Flushing Water Pump Rm.= Potable & Flushing Water Pump Room	食水和沖廁水泵房
Store	儲物室
Study	書房
UP	向上
Utility	工作間
W/C 1/2 = Water Closet 1/2	洗手間 1/2
W.M.C. = Water Meter Cabinet 1/2	水錶箱
Yard	庭院

Note applicable to this section:  
Floor-to-floor height: refer to the height between the top surface of the structural slab of the floor and the top surface of the structural slab of its immediate upper floor.

本節適用之備註：  
層與層之間的高度：指該樓層之石屎地台面與上一層石屎地台面之高度距離。

Plantation Boulevard House 1  
Plantation Boulevard 1 號洋房Basement Floor Plan  
地庫平面圖

SCALE 0M(米) 2.5M(米) 5.0M(米)  
比例

The internal areas of the residential properties on the upper floors will generally be slightly larger than those on the lower floors because of the reducing thickness of the structural walls on the upper floors (Not applicable).

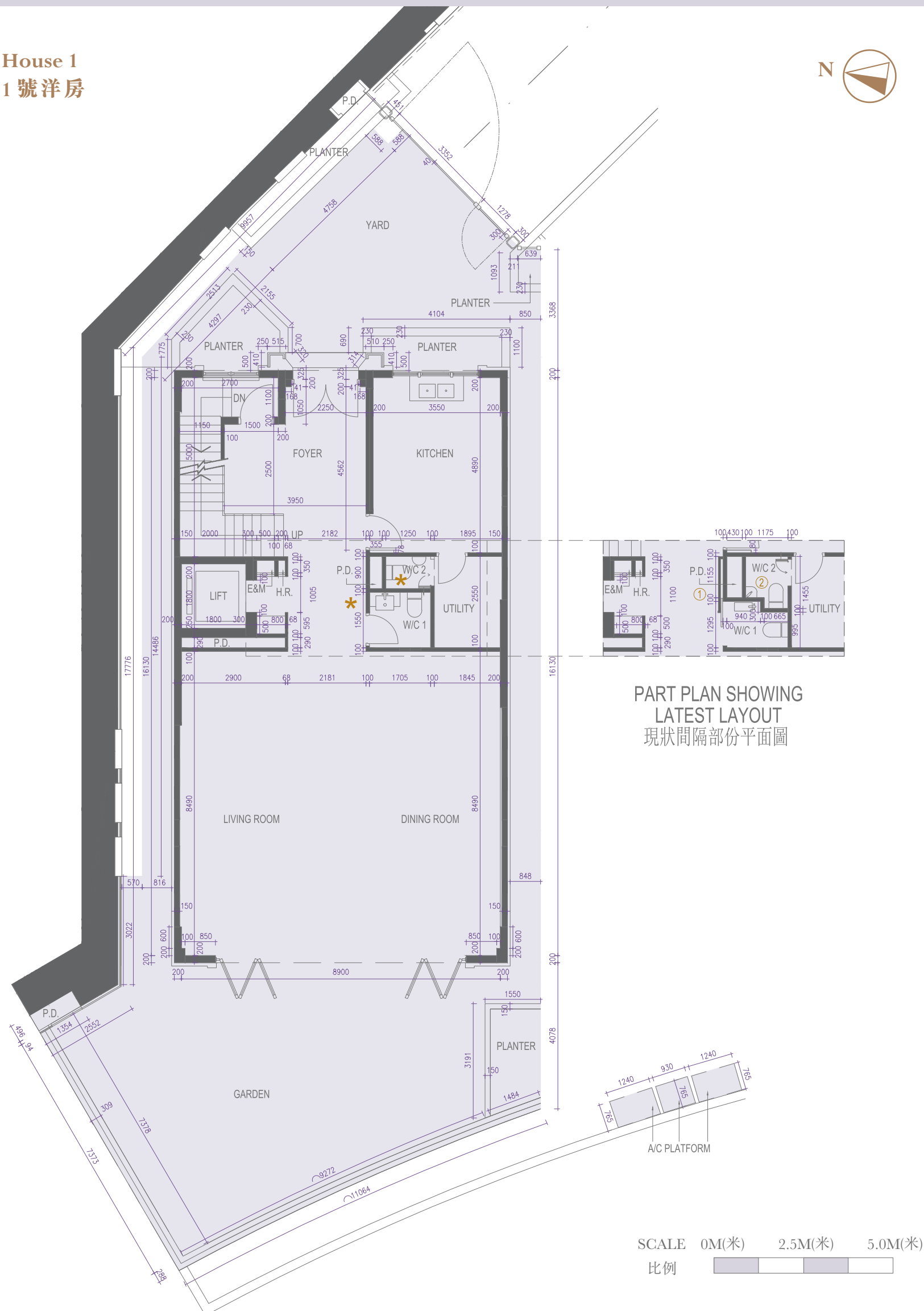
Please refer to the first page of the section "Floor Plans of Residential Properties in the Phase" for legend of the terms and abbreviation shown on the floor plan above.

因住宅物業的較高樓層的結構牆的厚度遞減，較高樓層的內部面積，一般比較低樓層的內部面積稍大(不適用)。

以上平面圖中顯示之名詞及簡稱請參閱「期數的住宅物業的樓面平面圖」一節首頁。

Plantation Boulevard House 1  
Plantation Boulevard 1 號洋房

Ground Floor Plan  
地下平面圖



The internal areas of the residential properties on the upper floors will generally be slightly larger than those on the lower floors because of the reducing thickness of the structural walls on the upper floors (Not applicable).

Please refer to the first page of the section "Floor Plans of Residential Properties in the Phase" for legend of the terms and abbreviation shown on the floor plan above.

\*This part of House 1 has been altered by way of minor works or exempted building works under the Building Ordinance after completion of the development, the latest condition of which is shown on the relevant part plan. The alteration works are as follows:

1. Non-structural wall within lift hall on G/F has been amended. Swing door at W/C 1 has been changed to sliding door.
2. Partition walls between W/C 1, W/C 2 and P.D. on G/F have been amended. Positions of sanitary fittings and drainage works within W/C 1 and W/C 2 on G/F have been amended.

因住宅物業的較高樓層的結構牆的厚度遞減，較高樓層的內部面積，一般比較低樓層的內部面積稍大(不適用)。

以上平面圖中顯示之名詞及簡稱請參閱「期數的住宅物業的樓面平面圖」一節首頁。

\*1號洋房此部份因在發展項目落成後進行小型工程或獲《建築物條例》豁免的工程而有所改動，現狀請參閱有關部份平面圖。該等改動如下：

1. 地下升降機大堂的非結構牆布局改動。洗手間1掩門更改為趟門。
2. 地下洗手間1，洗手間2與管槽之間的非結構牆布局改動。地下洗手間1與洗手間2的衛浴潔具及排水渠位置改動。

Plantation Boulevard House 1  
Plantation Boulevard 1 號洋房



## First Floor Plan 一樓平面圖



SCALE 0M(米) 2.5M(米) 5.0M(米)

比例 

The internal areas of the residential properties on the upper floors will generally be slightly larger than those on the lower floors because of the reducing thickness of the structural walls on the upper floors (Not applicable).

Please refer to the first page of the section "Floor Plans of Residential Properties in the Phase" for legend of the terms and abbreviation shown on the floor plan above.

\*This part of House 1 has been altered by way of minor works or exempted building works under the Building Ordinance after completion of the development, the latest condition of which is shown on the relevant part plan. The alteration works are as follows::

1. Non-structural walls within P.D. and H.R. and Bedroom 3 on 1/F have been amended.
2. Sliding door of Bedroom 3 on 1/F has changed to swing door.
3. Non-structural walls and direction of swing doors of Bedroom 1 and Bedroom 2 on 1/F have been amended.

因住宅物業的較高樓層的結構牆的厚度遞減，較高樓層的內部面積，一般比較低樓層的內部面積稍大(不適用)。

以上平面圖中顯示之名詞及簡稱請參閱「期數的住宅物業的樓面平面圖」一節首頁。

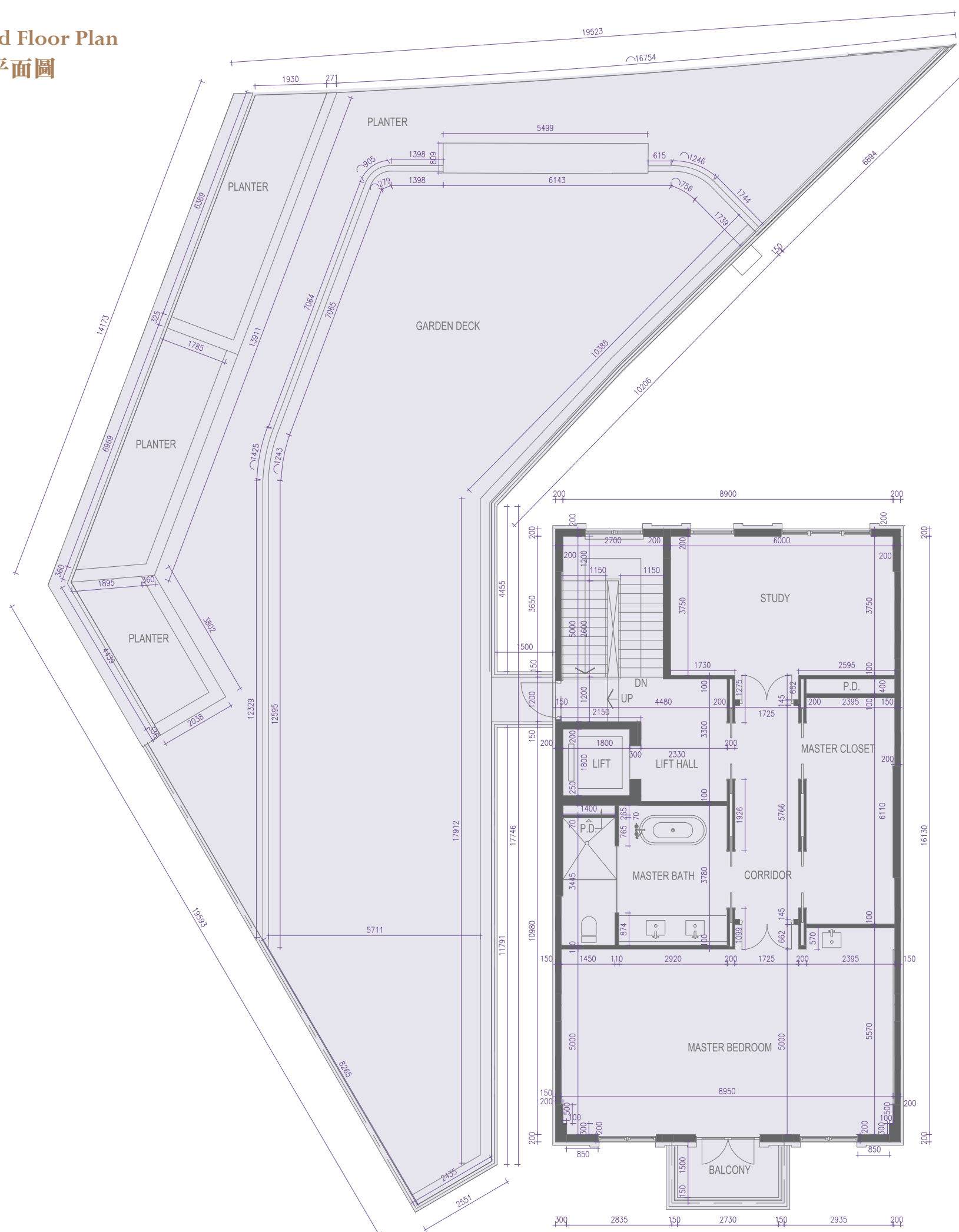
\*1號洋房此部份因在發展項目落成後進行小型工程或獲《建築物條例》豁免的工程而有所改動，現狀請參閱有關部份平面圖。該等改動如下：

1. 一樓管槽與消防喉轆之間和套房3的非結構牆布局改動。
2. 一樓套房3的趟門更改為掩門。
3. 一樓走廊的非結構牆布局和掩門方向改動。

Plantation Boulevard House 1  
Plantation Boulevard 1 號洋房



Second Floor Plan  
二樓平面圖



SCALE 0M(米) 2.5M(米) 5.0M(米)  
比例

The internal areas of the residential properties on the upper floors will generally be slightly larger than those on the lower floors because of the reducing thickness of the structural walls on the upper floors (Not applicable).

Please refer to the first page of the section "Floor Plans of Residential Properties in the Phase" for legend of the terms and abbreviation shown on the floor plan above.

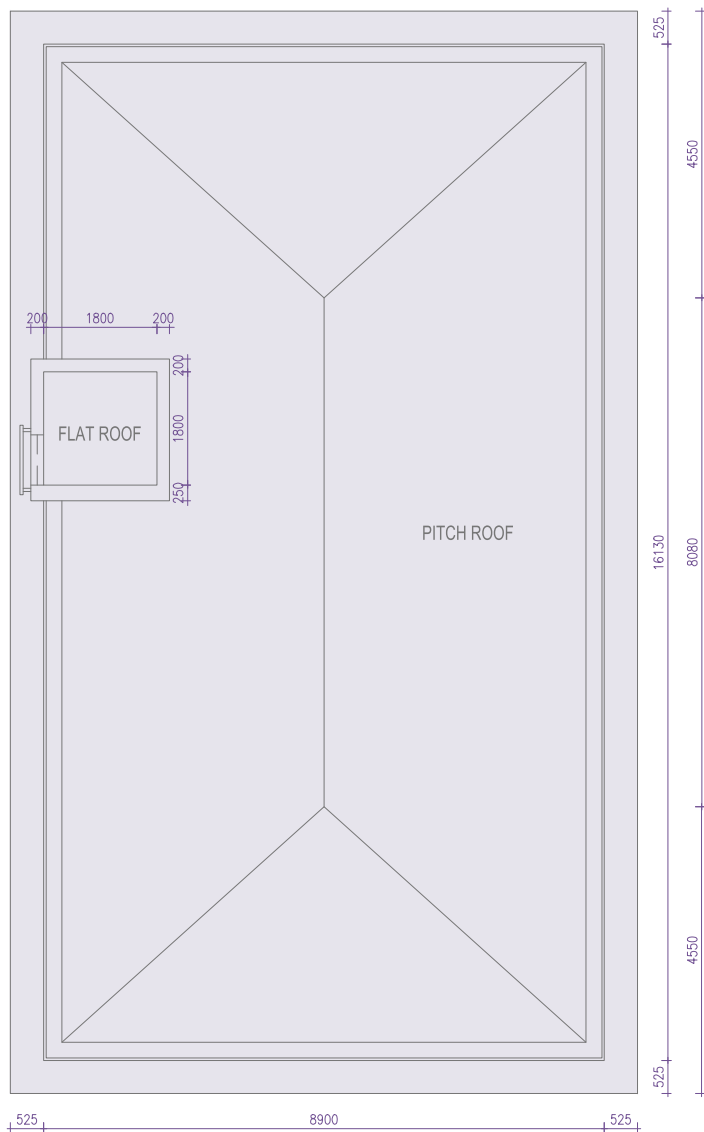
因住宅物業的較高樓層的結構牆的厚度遞減，較高樓層的內部面積，一般比較低樓層的內部面積稍大(不適用)。

以上平面圖中顯示之名詞及簡稱請參閱「期數的住宅物業的樓面平面圖」一節首頁。

Plantation Boulevard House 1  
Plantation Boulevard 1 號洋房



Roof Floor Plan  
天台平面圖



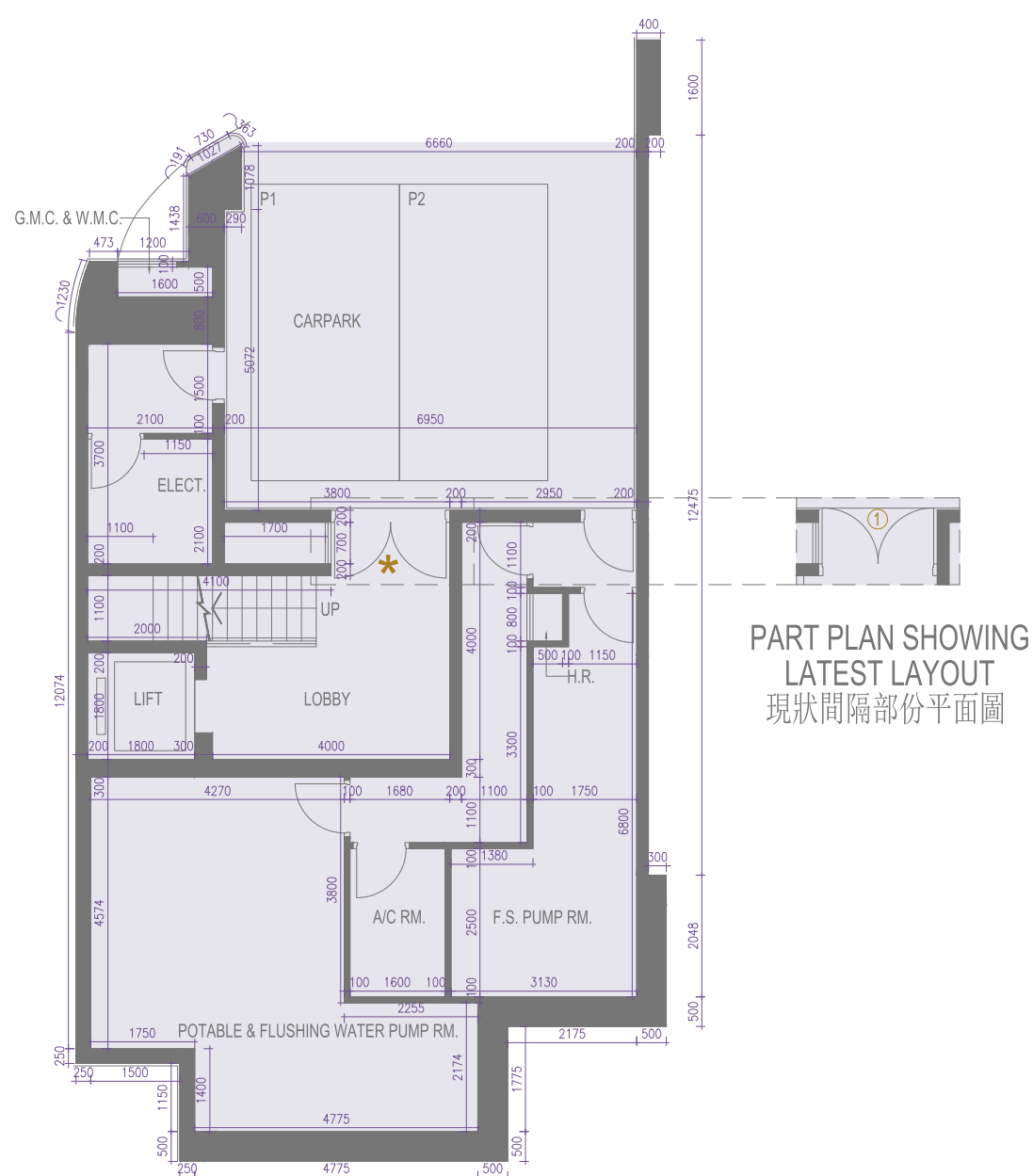
The internal areas of the residential properties on the upper floors will generally be slightly larger than those on the lower floors because of the reducing thickness of the structural walls on the upper floors. (Not applicable)  
Please refer to the first page of the section "Floor Plans of Residential Properties in the Phase" for legend of the terms and abbreviation shown on the floor plan above.

- Notes :
- 1. The dimensions in the floor plans are all structural dimensions in millimetre.

因住宅物業的較高樓層的結構牆的厚度遞減，較高樓層的內部面積，一般比較低樓層的內部面積稍大（不適用）。  
以上平面圖中顯示之名詞及簡稱請參閱「期數的住宅物業的樓面平面圖」一節首頁。

- 備註：
- 1. 樓面平面圖所列之尺寸為以毫米標示之建築結構尺寸。

Plantation Boulevard House 1 Plantation Boulevard 1 號洋房	Basement Floor 地庫	Ground Floor 地下	First Floor 一樓	Second Floor 二樓	Roof Floor 天台
The floor-to-floor height of the residential property (mm) 住宅物業的層與層之間的高度 (毫米)	4000	4200	3500	3000-4325	N/A
The thickness of the floor slabs (excluding plaster) of the residential property (mm) 住宅物業的樓板 (不包括灰泥) 的厚度 (毫米)	2000	400, 600	175, 200, 250, 325	150, 175, 200, 250, 325	325

Plantation Boulevard House 2  
Plantation Boulevard 2 號洋房Basement Floor Plan  
地庫平面圖

SCALE 0M(米) 2.5M(米) 5.0M(米)  
比例

The internal areas of the residential properties on the upper floors will generally be slightly larger than those on the lower floors because of the reducing thickness of the structural walls on the upper floors (Not applicable).

Please refer to the first page of the section "Floor Plans of Residential Properties in the Phase" for legend of the terms and abbreviation shown on the floor plan above.

\*This part of House 2 has been altered by way of exempted building works under the Building Ordinance after completion of the development, the latest condition of which is shown on the relevant part plan. The alteration works are as follows:

1. Layout and direction of swing doors of Lobby on B/F have been amended.

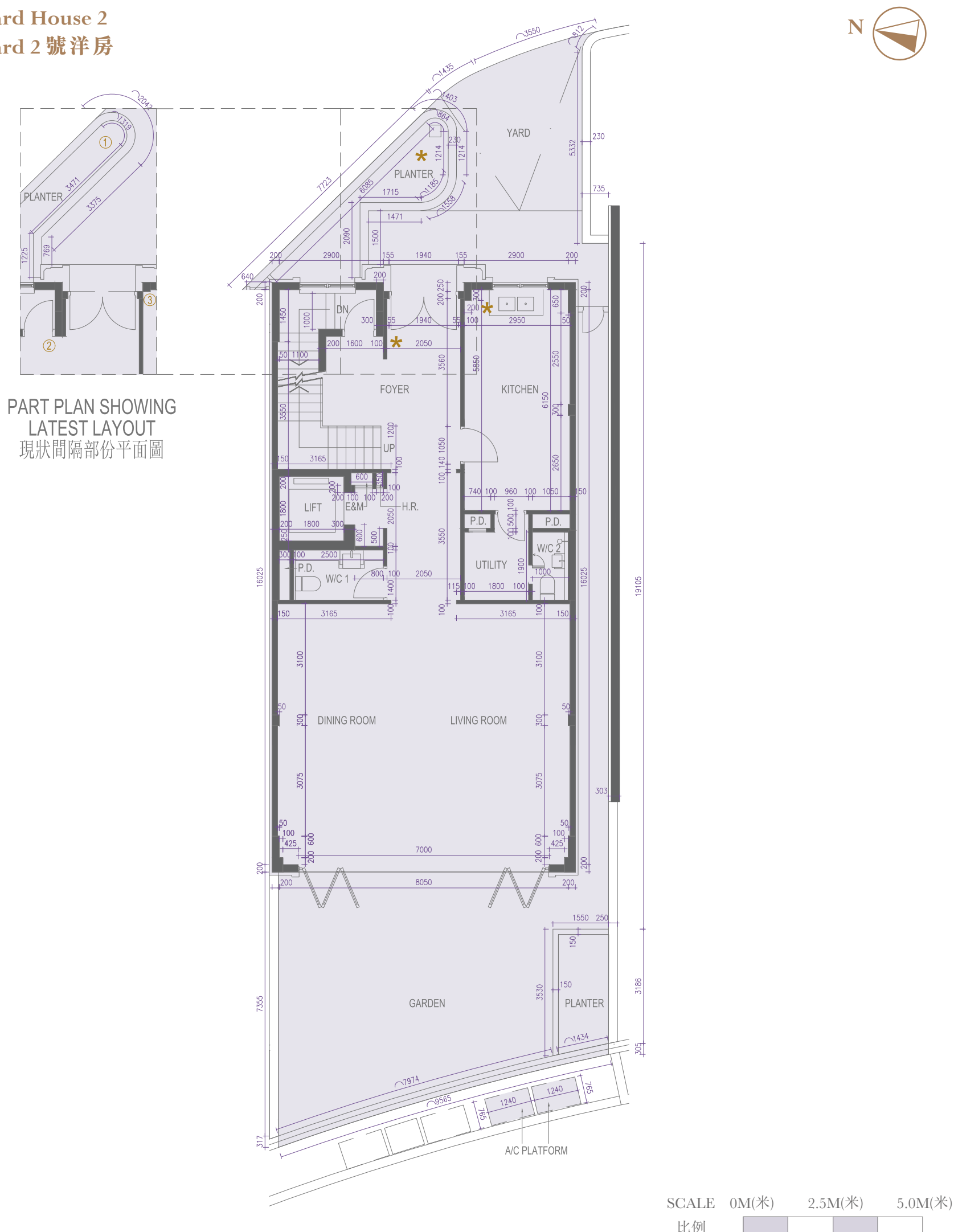
因住宅物業的較高樓層的結構牆的厚度遞減，較高樓層的內部面積，一般比較低樓層的內部面積稍大(不適用)。

以上平面圖中顯示之名詞及簡稱請參閱「期數的住宅物業的樓面平面圖」一節首頁。

\*2號洋房此部份因在發展項目落成後進行獲《建築物條例》豁免的工程而有所改動，現狀請參閱有關部份平面圖。該等改動如下：

1. 地庫大堂的掩門布局 and 方向改動。



Plantation Boulevard House 2  
Plantation Boulevard 2 號洋房Ground Floor Plan  
地下平面圖

The internal areas of the residential properties on the upper floors will generally be slightly larger than those on the lower floors because of the reducing thickness of the structural walls on the upper floors (Not applicable).

Please refer to the first page of the section "Floor Plans of Residential Properties in the Phase" for legend of the terms and abbreviation shown on the floor plan above.

\*This part of House 2 has been altered by way of exempted building works under the Building Ordinance after completion of the development, the latest condition of which is shown on the relevant part plan. The alteration works are as follow:

1. G/F Yard planter has been amended.
2. Non-structural wall within Foyer on G/F has been removed.
3. Non-structural wall within Kitchen on G/F has been removed.

因住宅物業的較高樓層的結構牆的厚度遞減，較高樓層的內部面積，一般比較低樓層的內部面積稍大(不適用)。

以上平面圖中顯示之名詞及簡稱請參閱「期數的住宅物業的樓面平面圖」一節首頁。

\*2號洋房此部份因在發展項目落成後進行獲《建築物條例》豁免的工程而有所改動，現狀請參閱有關部份平面圖。該等改動如下：

1. 地下庭院花槽布局改動。
2. 地下前廳的非結構牆已移除。
3. 地下廚房的非結構牆已移除。



Plantation Boulevard House 2  
Plantation Boulevard 2 號洋房First Floor Plan  
一樓平面圖

SCALE 0M(米) 2.5M(米) 5.0M(米)  
比例

The internal areas of the residential properties on the upper floors will generally be slightly larger than those on the lower floors because of the reducing thickness of the structural walls on the upper floors (Not applicable).

Please refer to the first page of the section "Floor Plans of Residential Properties in the Phase" for legend of the terms and abbreviation shown on the floor plan above.

\*This part of House 2 has been altered by way of Alterations and Additions works or minor works under the Building Ordinance after completion of the development, the latest condition of which is shown on the relevant part plan. The alteration works are as follow:

1. Structural wall of Lift on 1/F has been amended.
2. Non-structural wall and location of swing doors of Corridor on 1/F have been amended.

因住宅物業的較高樓層的結構牆的厚度遞減，較高樓層的內部面積，一般比較低樓層的內部面積稍大(不適用)。

以上平面圖中顯示之名詞及簡稱請參閱「期數的住宅物業的樓面平面圖」一節首頁。

\*2號洋房此部份因在發展項目落成後進行根據《建築物條例》加建改動的工程或小型工程而有所改動，現狀請參閱有關部份平面圖。該等改動如下：

1. 一樓升降機的結構牆改動。
2. 一樓走廊的非結構牆和掩門位置改動。

Plantation Boulevard House 2  
Plantation Boulevard 2 號洋房Second Floor Plan  
二樓平面圖

SCALE 0M(米) 2.5M(米) 5.0M(米)  
比例

The internal areas of the residential properties on the upper floors will generally be slightly larger than those on the lower floors because of the reducing thickness of the structural walls on the upper floors (Not applicable).

Please refer to the first page of the section "Floor Plans of Residential Properties in the Phase" for legend of the terms and abbreviation shown on the floor plan above.

\*This part of House 2 has been altered by way of Alterations and Additions works or exempted building works under the Building Ordinance after completion of the development, the latest condition of which is shown on the relevant part plan. The alteration works are as follow:

1. Structural wall of Lift on 2/F has been amended.
2. The partition wall of master closet 1 on 2/F has been removed and non-structural wall extended to 2450mm.
3. Sliding door at Lift Hall on 2/F has been changed to swing door.
4. Location of swing doors of Master Closet 1 on 2/F has been altered.

因住宅物業的較高樓層的結構牆的厚度遞減，較高樓層的內部面積，一般比較低樓層的內部面積稍大(不適用)。

以上平面圖中顯示之名詞及簡稱請參閱「期數的住宅物業的樓面平面圖」一節首頁。

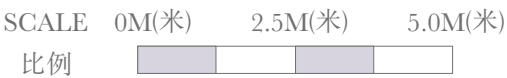
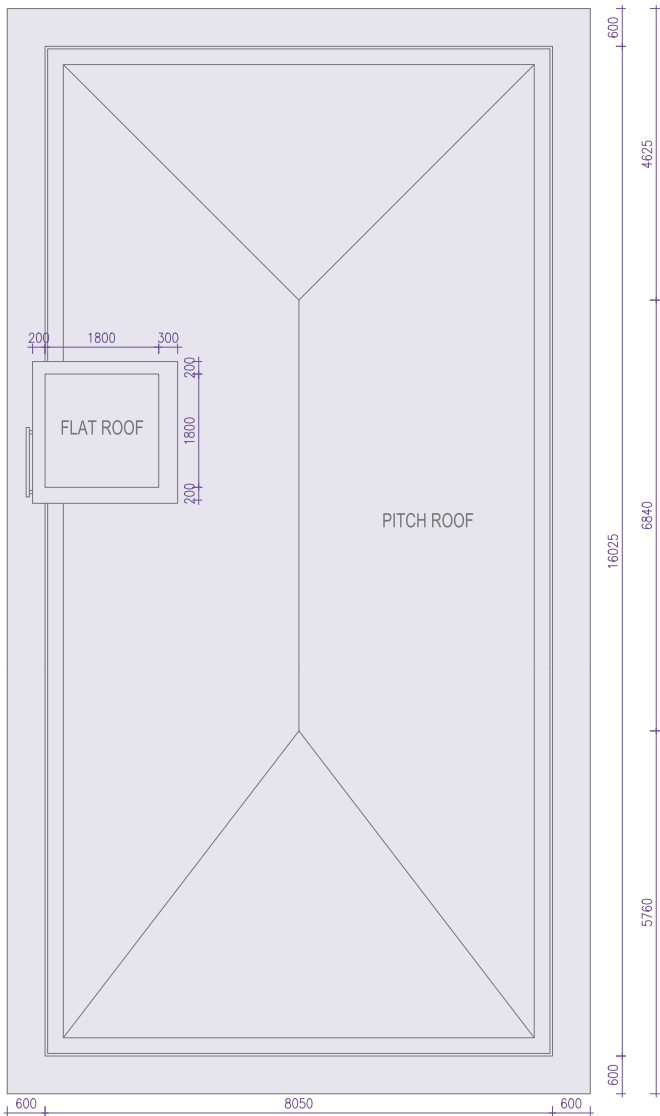
\*2號洋房此部份因在發展項目落成後進行根據《建築物條例》加建改動的工程或獲《建築物條例》豁免的工程而有所改動，現狀請參閱有關部份平面圖。該等改動如下：

1. 二樓升降機的結構牆改動。
2. 二樓主人衣帽間1的間隔牆已移除和非結構牆延長至2450毫米。
3. 二樓升降機大堂的趟門更改為掩門。
4. 二樓主人衣帽間1的掩門位置改動。

Plantation Boulevard House 2  
Plantation Boulevard 2 號洋房



Roof Floor Plan  
天台平面圖



The internal areas of the residential properties on the upper floors will generally be slightly larger than those on the lower floors because of the reducing thickness of the structural walls on the upper floors. (Not applicable)

Please refer to the first page of the section "Floor Plans of Residential Properties in the Phase" for legend of the terms and abbreviation shown on the floor plan above.

因住宅物業的較高樓層的結構牆的厚度遞減，較高樓層的內部面積，一般比較低樓層的內部面積稍大（不適用）。

以上平面圖中顯示之名詞及簡稱請參閱「期數的住宅物業的樓面平面圖」一節首頁。

- Notes :
- 1. The dimensions in the floor plans are all structural dimensions in millimetre.

- 備註：
- 1. 樓面平面圖所列之尺寸為以毫米標示之建築結構尺寸。

Plantation Boulevard House 2 Plantation Boulevard 2 號洋房	Basement Floor 地庫	Ground Floor 地下	First Floor 一樓	Second Floor 二樓	Roof Floor 天台
The floor-to-floor height of the residential property (mm) 住宅物業的層與層之間的高度 (毫米)	4000	4200	3500	3000-4325	N/A
The thickness of the floor slabs (excluding plaster) of the residential property (mm) 住宅物業的樓板 (不包括灰泥) 的厚度 (毫米)	2000	400, 600	175, 200, 250, 325	150, 175, 200, 250, 325	325

Plantation Boulevard House 3  
Plantation Boulevard 3 號洋房



Basement Floor Plan  
地庫平面圖



SCALE 0M(米) 2.5M(米) 5.0M(米)  
比例

The internal areas of the residential properties on the upper floors will generally be slightly larger than those on the lower floors because of the reducing thickness of the structural walls on the upper floors (Not applicable).

Please refer to the first page of the section "Floor Plans of Residential Properties in the Phase" for legend of the terms and abbreviation shown on the floor plan above.

\*This part of House 3 has been altered by way of exempted building works under the Building Ordinance after completion of the development, the latest condition of which is shown on the relevant part plan. The alteration works are as follows:

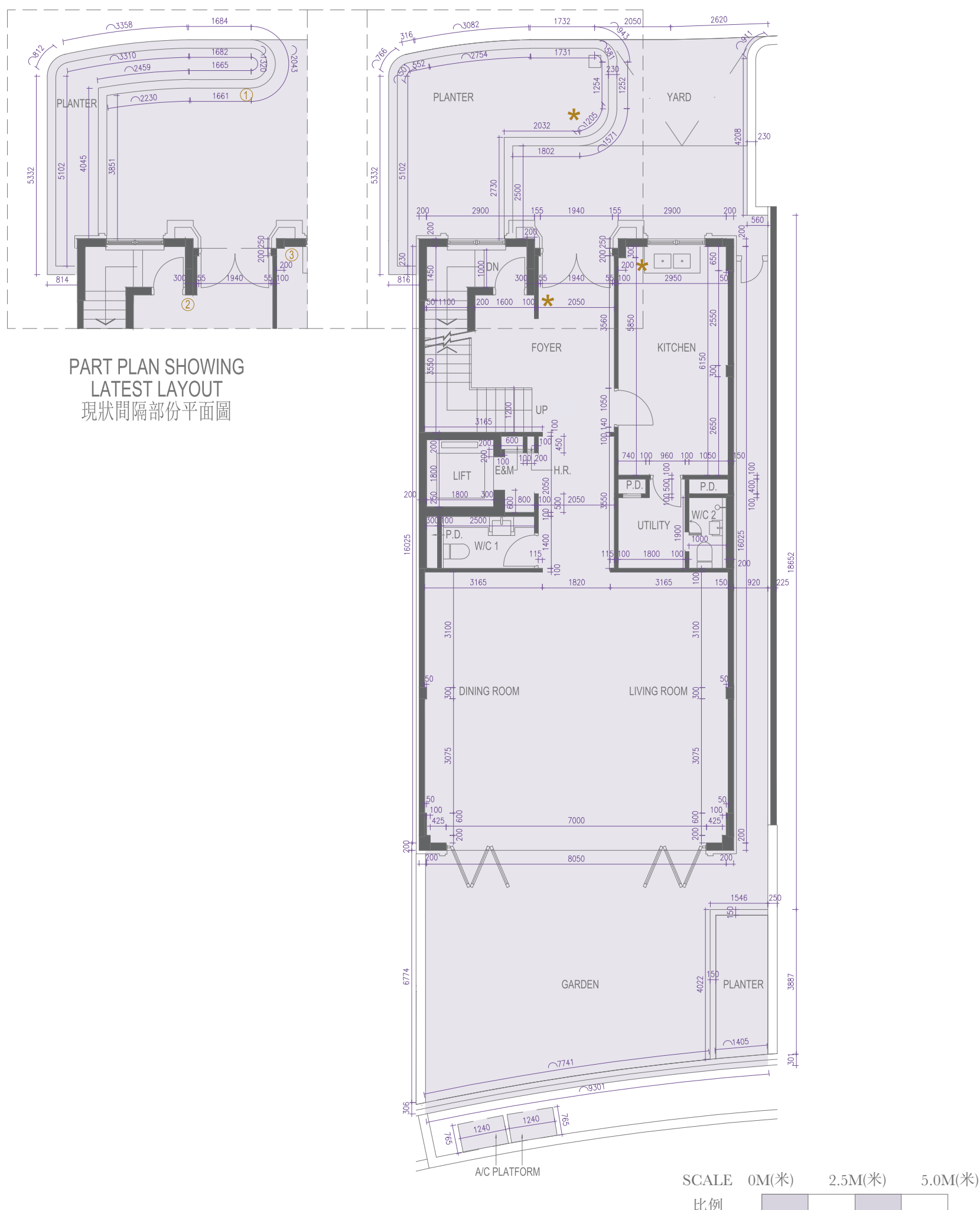
1. Layout and direction of swing doors of Lobby on B/F have been amended.

因住宅物業的較高樓層的結構牆的厚度遞減，較高樓層的內部面積，一般比較低樓層的內部面積稍大(不適用)。

以上平面圖中顯示之名詞及簡稱請參閱「期數的住宅物業的樓面平面圖」一節首頁。

\*3號洋房此部份因在發展項目落成後進行獲《建築物條例》豁免的工程而有所改動，現狀請參閱有關部份平面圖。該等改動如下：

1. 地庫大堂的掩門布局 and 方向改動。

Plantation Boulevard House 3  
Plantation Boulevard 3 號洋房Ground Floor Plan  
地下平面圖

The internal areas of the residential properties on the upper floors will generally be slightly larger than those on the lower floors because of the reducing thickness of the structural walls on the upper floors (Not applicable).

Please refer to the first page of the section "Floor Plans of Residential Properties in the Phase" for legend of the terms and abbreviation shown on the floor plan above.

\*This part of House 3 has been altered by way of exempted building works under the Building Ordinance after completion of the development, the latest condition of which is shown on the relevant part plan. The alteration works are as follow:

1. G/FYard planter has been amended.
2. Non-structural wall within Foyer on G/F has been removed.
3. Non-structural wall within Kitchen on G/F has been removed.

因住宅物業的較高樓層的結構牆的厚度遞減，較高樓層的內部面積，一般比較低樓層的內部面積稍大(不適用)。

以上平面圖中顯示之名詞及簡稱請參閱「期數的住宅物業的樓面平面圖」一節首頁。

\*3號洋房此部份因在發展項目落成後進行獲《建築物條例》豁免的工程而有所改動，現狀請參閱有關部份平面圖。該等改動如下：

1. 地下庭院花槽改動。
2. 地下前廳的非結構牆已移除。
3. 地下廚房的非結構牆已移除。

Plantation Boulevard House 3  
Plantation Boulevard 3 號洋房First Floor Plan  
一樓平面圖

SCALE 0M(米) 2.5M(米) 5.0M(米)  
比例

The internal areas of the residential properties on the upper floors will generally be slightly larger than those on the lower floors because of the reducing thickness of the structural walls on the upper floors (Not applicable).

Please refer to the first page of the section "Floor Plans of Residential Properties in the Phase" for legend of the terms and abbreviation shown on the floor plan above.

\*This part of House 3 has been altered by way of Alterations and Additions works or minor works under the Building Ordinance after completion of the development, the latest condition of which is shown on the relevant part plan. The alteration works are as follow:

1. Structural wall of Lift on 1/F has been amended.
2. Non-structural wall and location of swing doors of Corridor on 1/F have been amended.

因住宅物業的較高樓層的結構牆的厚度遞減，較高樓層的內部面積，一般比較低樓層的內部面積稍大(不適用)。

以上平面圖中顯示之名詞及簡稱請參閱「期數的住宅物業的樓面平面圖」一節首頁。

\*3號洋房此部份因在發展項目落成後根據《建築物條例》進行加建改動的工程或小型工程而有所改動，現狀請參閱有關部份平面圖。該等改動如下：

1. 一樓升降機的結構牆改動。
2. 一樓走廊的非結構牆和掩門位置改動。



Plantation Boulevard House 3  
Plantation Boulevard 3 號洋房Second Floor Plan  
二樓平面圖

The internal areas of the residential properties on the upper floors will generally be slightly larger than those on the lower floors because of the reducing thickness of the structural walls on the upper floors (Not applicable).

Please refer to the first page of the section "Floor Plans of Residential Properties in the Phase" for legend of the terms and abbreviation shown on the floor plan above.

\*This part of House 3 has been altered by way of Alterations and Additions works or exempted building works under the Building Ordinance after completion of the development, the latest condition of which is shown on the relevant part plan. The alteration works are as follow:

1. Structural wall of Lift on 2/F has been amended.
2. The partition wall of master closet 1 on 2/F has been removed and non-structural wall extended to 2450mm.
3. Sliding door at Lift Hall on 2/F has been changed to swing door.
4. Location of swing doors of Master Closet 1 on 2/F has been altered.

因住宅物業的較高樓層的結構牆的厚度遞減，較高樓層的內部面積，一般比較低樓層的內部面積稍大(不適用)。

以上平面圖中顯示之名詞及簡稱請參閱「期數的住宅物業的樓面平面圖」一節首頁。

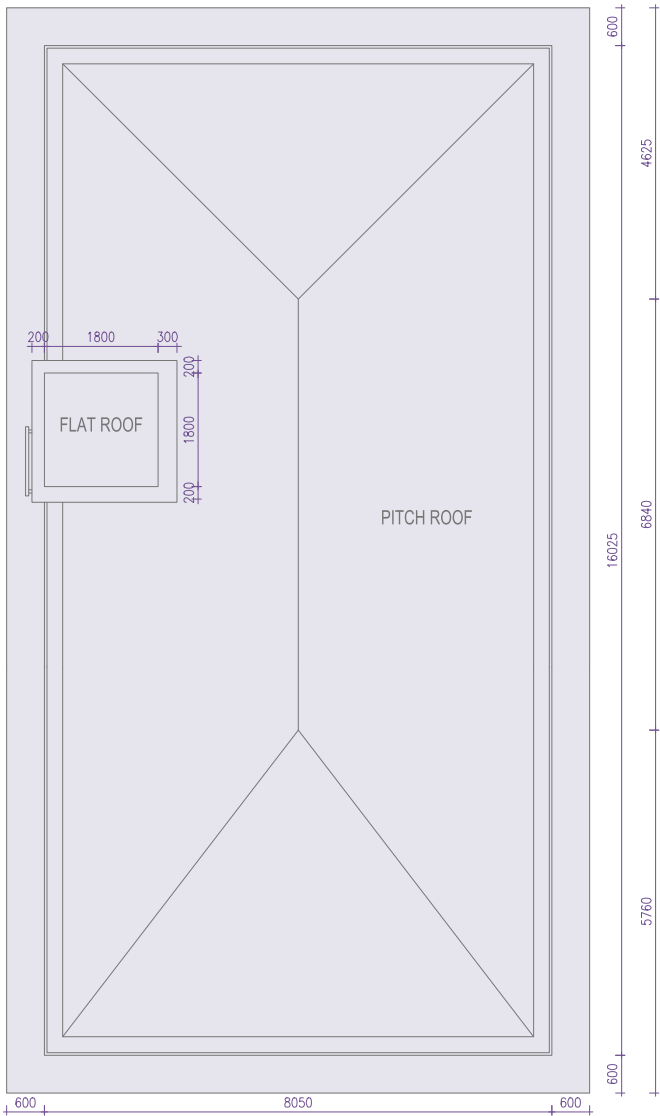
\*3號洋房此部份因在發展項目落成後進行加建改動的工程或獲《建築物條例》豁免的工程而有所改動，現狀請參閱有關部份平面圖。該等改動如下

1. 二樓升降機的結構牆改動。
2. 二樓主人衣帽間的間隔牆已移除和非結構牆延長至2450毫米。
3. 二樓升降機大堂的趟門更改為掩門。
4. 二樓主人衣帽間的掩門位置改動。

Plantation Boulevard House 3  
Plantation Boulevard 3 號洋房



Roof Floor Plan  
天台平面圖



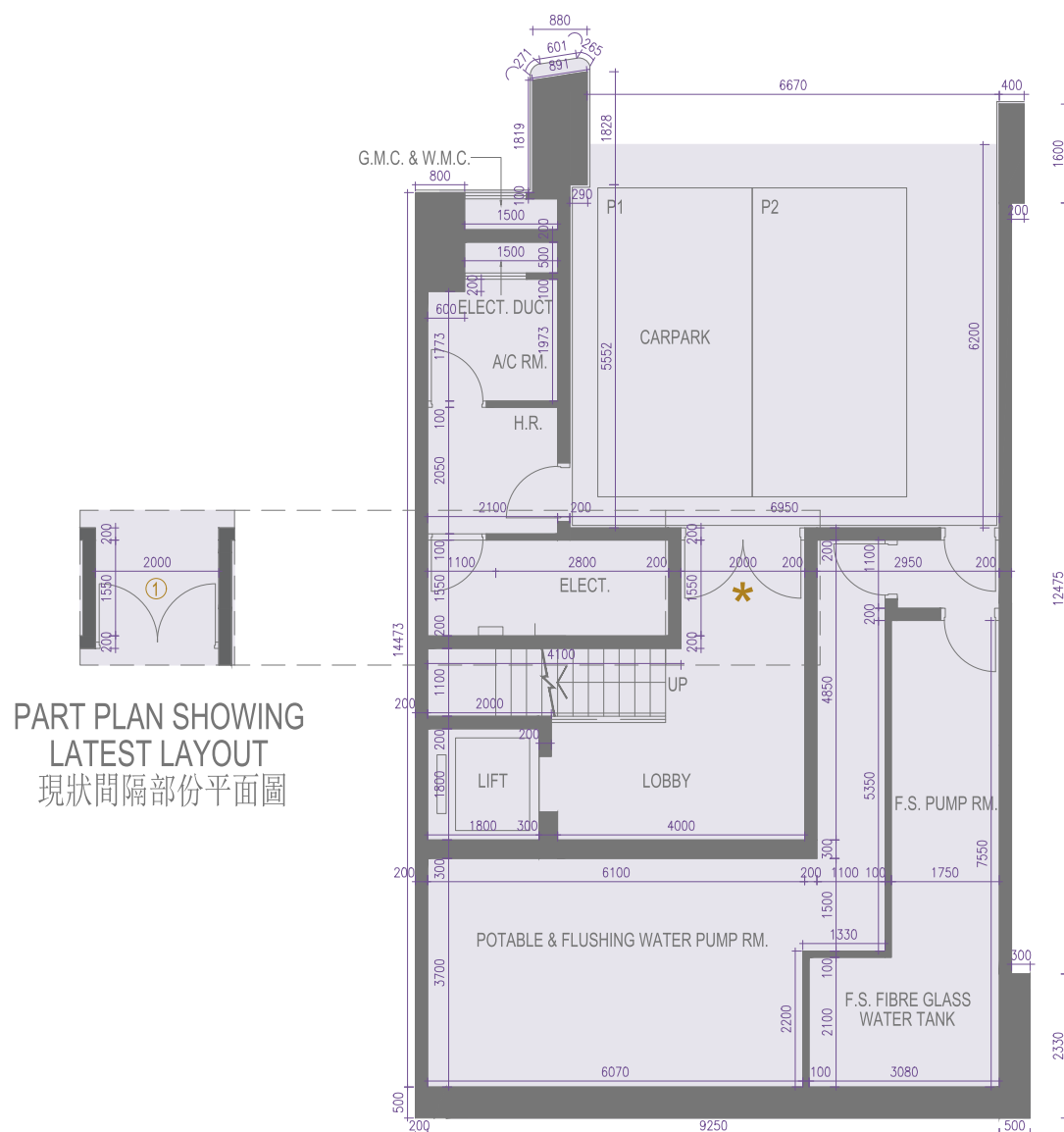
The internal areas of the residential properties on the upper floors will generally be slightly larger than those on the lower floors because of the reducing thickness of the structural walls on the upper floors. (Not applicable)  
Please refer to the first page of the section "Floor Plans of Residential Properties in the Phase" for legend of the terms and abbreviation shown on the floor plan above.

因住宅物業的較高樓層的結構牆的厚度遞減，較高樓層的內部面積，一般比較低樓層的內部面積稍大（不適用）。  
以上平面圖中顯示之名詞及簡稱請參閱「期數的住宅物業的樓面平面圖」一節首頁。

- Notes :
- 1. The dimensions in the floor plans are all structural dimensions in millimetre.

- 備註：
- 1. 樓面平面圖所列之尺寸為以毫米標示之建築結構尺寸。

Plantation Boulevard House 3 Plantation Boulevard 3 號洋房	Basement Floor 地庫	Ground Floor 地下	First Floor 一樓	Second Floor 二樓	Roof Floor 天台
The floor-to-floor height of the residential property (mm) 住宅物業的層與層之間的高度 (毫米)	4000	4200	3500	3000-4325	N/A
The thickness of the floor slabs (excluding plaster) of the residential property (mm) 住宅物業的樓板(不包括灰泥)的厚度 (毫米)	2000	400, 600	175, 200, 250, 325	150, 175, 200, 250, 325	325

Plantation Boulevard House 5  
Plantation Boulevard 5 號洋房Basement Floor Plan  
地庫平面圖

SCALE 0M(米) 2.5M(米) 5.0M(米)  
比例

The internal areas of the residential properties on the upper floors will generally be slightly larger than those on the lower floors because of the reducing thickness of the structural walls on the upper floors (Not applicable).

Please refer to the first page of the section "Floor Plans of Residential Properties in the Phase" for legend of the terms and abbreviation shown on the floor plan above.

\*This part of House 5 has been altered by way of exempted building works under the Building Ordinance after completion of the development, the latest condition of which is shown on the relevant part plan. The alteration works are as follows:

1. Layout and direction of swing doors of Lobby on B/F have been amended.

因住宅物業的較高樓層的結構牆的厚度遞減，較高樓層的內部面積，一般比較低樓層的內部面積稍大(不適用)。

以上平面圖中顯示之名詞及簡稱請參閱「期數的住宅物業的樓面平面圖」一節首頁。

\*5號洋房此部份因在發展項目落成後進行獲《建築物條例》豁免的工程而有所改動，現狀請參閱有關部份平面圖。該等改動如下：

1. 地庫大堂的掩門布局 and 方向改動。

Plantation Boulevard House 5  
Plantation Boulevard 5 號洋房Ground Floor Plan  
地下平面圖

The internal areas of the residential properties on the upper floors will generally be slightly larger than those on the lower floors because of the reducing thickness of the structural walls on the upper floors (Not applicable).

Please refer to the first page of the section "Floor Plans of Residential Properties in the Phase" for legend of the terms and abbreviation shown on the floor plan above.

\*This part of House 5 has been altered by way of exempted building works under the Building Ordinance after completion of the development, the latest condition of which is shown on the relevant part plan. The alteration works are as follow:

1. G/F Yard planter has been amended.
2. Non-structural wall within Foyer on G/F has been removed.
3. Non-structural wall within Kitchen on G/F has been removed.

因住宅物業的較高樓層的結構牆的厚度遞減，較高樓層的內部面積，一般比較低樓層的內部面積稍大（不適用）。

以上平面圖中顯示之名詞及簡稱請參閱「期數的住宅物業的樓面平面圖」一節首頁。

\*5號洋房此部份因在發展項目落成後進行獲《建築物條例》豁免的工程而有所改動，現狀請參閱有關部份平面圖。該等改動如下：

1. 地下庭院花槽改動。
2. 地下前廳的非結構牆已移除。
3. 地下廚房的非結構牆已移除。

Plantation Boulevard House 5  
Plantation Boulevard 5 號洋房



## First Floor Plan 一樓平面圖



SCALE 0M(米) 2.5M(米) 5.0M(米)

比例 

The internal areas of the residential properties on the upper floors will generally be slightly larger than those on the lower floors because of the reducing thickness of the structural walls on the upper floors (Not applicable).

Please refer to the first page of the section "Floor Plans of Residential Properties in the Phase" for legend of the terms and abbreviation shown on the floor plan above.

\*This part of House 5 has been altered by way of Alterations and Additions works or minor works under the Building Ordinance after completion of the development, the latest condition of which is shown on the relevant part plan. The alteration works are as follow:

1. Structural wall of Lift on 1/F has been amended.
2. Non-structural wall and location of swing doors of Corridor on 1/F have been amended.

因住宅物業的較高樓層的結構牆的厚度遞減，較高樓層的內部面積，一般比較低樓層的內部面積稍大(不適用)。

以上平面圖中顯示之名詞及簡稱請參閱「期數的住宅物業的樓面平面圖」一節首頁。

\*5號洋房此部份因在發展項目落成後根據《建築物條例》進行加建改動的工程或小型工程而有所改動，現狀請參閱有關部份平面圖。該等改動如下：

1. 一樓升降機的結構牆改動。
2. 一樓走廊的非結構牆和掩門位置改動。

Plantation Boulevard House 5  
Plantation Boulevard 5 號洋房Second Floor Plan  
二樓平面圖

SCALE 0M(米) 2.5M(米) 5.0M(米)  
比例

The internal areas of the residential properties on the upper floors will generally be slightly larger than those on the lower floors because of the reducing thickness of the structural walls on the upper floors (Not applicable).

Please refer to the first page of the section "Floor Plans of Residential Properties in the Phase" for legend of the terms and abbreviation shown on the floor plan above.

\*This part of House 5 has been altered by way of Alterations and Additions works or exempted building works under the Building Ordinance after completion of the development, the latest condition of which is shown on the relevant part plan. The alteration works are as follow:

1. Structural wall of Lift on 2/F has been amended.
2. The partition wall of master closet 1 on 2/F has been removed and non-structural wall extended to 2450mm.
3. Sliding door at Lift Hall on 2/F has been changed to swing door.
4. Location of swing doors of Master Closet 1 on 2/F has been altered.

因住宅物業的較高樓層的結構牆的厚度遞減，較高樓層的內部面積，一般比較低樓層的內部面積稍大(不適用)。

以上平面圖中顯示之名詞及簡稱請參閱「期數的住宅物業的樓面平面圖」一節首頁。

\*5號洋房此部份因在發展項目落成後進行加建改動的工程或獲《建築物條例》豁免的工程而有所改動，現狀請參閱有關部份平面圖。該等改動如下：

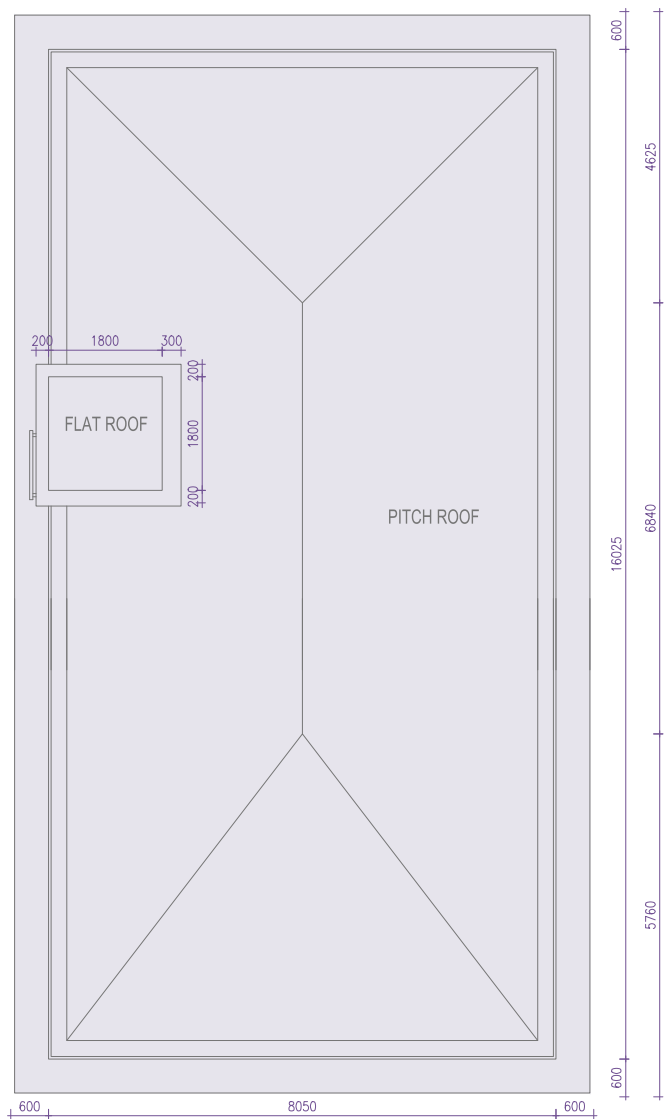
1. 二樓升降機的結構牆改動。
2. 二樓主人衣帽間的間隔牆已移除和非結構牆延長至2450毫米。
3. 二樓升降機大堂的趟門更改為掩門。
4. 二樓主人衣帽間的掩門位置改動。



Plantation Boulevard House 5  
Plantation Boulevard 5 號洋房



Roof Floor Plan  
天台平面圖



The internal areas of the residential properties on the upper floors will generally be slightly larger than those on the lower floors because of the reducing thickness of the structural walls on the upper floors. (Not applicable)

Please refer to the first page of the section "Floor Plans of Residential Properties in the Phase" for legend of the terms and abbreviation shown on the floor plan above.

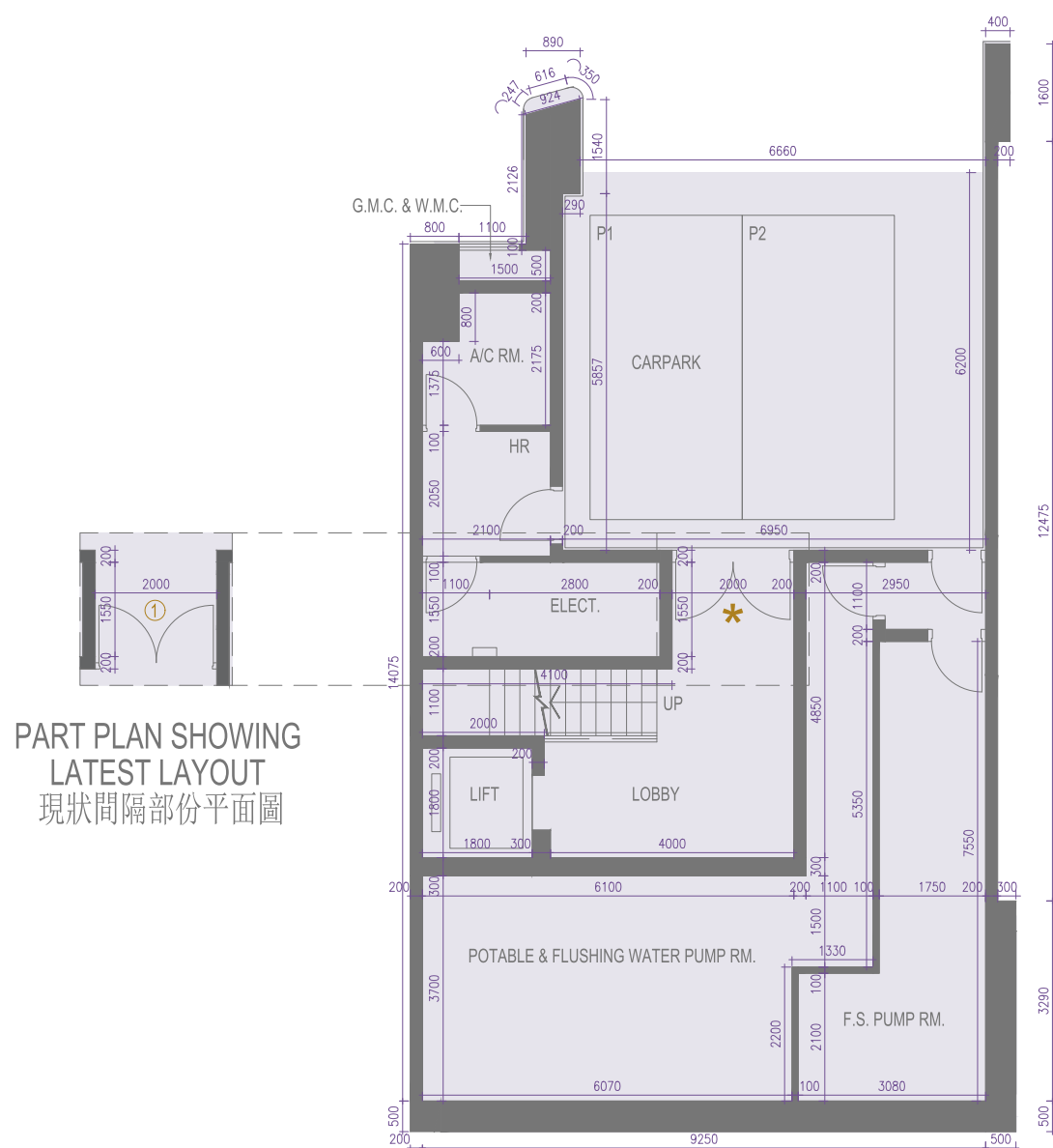
因住宅物業的較高樓層的結構牆的厚度遞減，較高樓層的內部面積，一般比較低樓層的內部面積稍大（不適用）。

以上平面圖中顯示之名詞及簡稱請參閱「期數的住宅物業的樓面平面圖」一節首頁。

- Notes :
- 1. The dimensions in the floor plans are all structural dimensions in millimetre.

- 備註：
- 1. 樓面平面圖所列之尺寸為以毫米標示之建築結構尺寸。

Plantation Boulevard House 5 Plantation Boulevard 5 號洋房	Basement Floor 地庫	Ground Floor 地下	First Floor 一樓	Second Floor 二樓	Roof Floor 天台
The floor-to-floor height of the residential property (mm) 住宅物業的層與層之間的高度 (毫米)	4000	4200	3500	3000-4325	N/A
The thickness of the floor slabs (excluding plaster) of the residential property (mm) 住宅物業的樓板 (不包括灰泥) 的厚度 (毫米)	2000	400, 600	175, 200, 250, 325	150, 175, 200, 250, 325	325

Plantation Boulevard House 6  
Plantation Boulevard 6 號洋房Basement Floor Plan  
地庫平面圖

SCALE 0M(米) 2.5M(米) 5.0M(米)  
比例

The internal areas of the residential properties on the upper floors will generally be slightly larger than those on the lower floors because of the reducing thickness of the structural walls on the upper floors (Not applicable).

Please refer to the first page of the section "Floor Plans of Residential Properties in the Phase" for legend of the terms and abbreviation shown on the floor plan above.

\*This part of House 6 has been altered by way of exempted building works under the Building Ordinance after completion of the development, the latest condition of which is shown on the relevant part plan. The alteration works are as follows:

1. Layout and direction of swing doors of Lobby on B/F have been amended.

因住宅物業的較高樓層的結構牆的厚度遞減，較高樓層的內部面積，一般比較低樓層的內部面積稍大(不適用)。

以上平面圖中顯示之名詞及簡稱請參閱「期數的住宅物業的樓面平面圖」一節首頁。

\*6號洋房此部份因在發展項目落成後進行獲《建築物條例》豁免的工程而有所改動，現狀請參閱有關部份平面圖。該等改動如下：

1. 地庫大堂的掩門布局 and 方向改動。

Plantation Boulevard House 6  
Plantation Boulevard 6 號洋房Ground Floor Plan  
地下平面圖

The internal areas of the residential properties on the upper floors will generally be slightly larger than those on the lower floors because of the reducing thickness of the structural walls on the upper floors (Not applicable).

Please refer to the first page of the section "Floor Plans of Residential Properties in the Phase" for legend of the terms and abbreviation shown on the floor plan above.

\*This part of House 6 has been altered by way of exempted building works under the Building Ordinance after completion of the development, the latest condition of which is shown on the relevant part plan. The alteration works are as follow:

1. G/F Yard planter has been amended.
2. Non-structural wall within Foyer on G/F has been removed.
3. Non-structural wall within Kitchen on G/F has been removed.

因住宅物業的較高樓層的結構牆的厚度遞減，較高樓層的內部面積，一般比較低樓層的內部面積稍大（不適用）。

以上平面圖中顯示之名詞及簡稱請參閱「期數的住宅物業的樓面平面圖」一節首頁。

\*6號洋房此部份因在發展項目落成後進行獲《建築物條例》豁免的工程而有所改動，現狀請參閱有關部份平面圖。該等改動如下：

1. 地下庭院花槽改動。
2. 地下前廳的非結構牆已移除。
3. 地下廚房的非結構牆已移除。

Plantation Boulevard House 6  
Plantation Boulevard 6 號洋房First Floor Plan  
一樓平面圖

SCALE 0M(米) 2.5M(米) 5.0M(米)  
比例

The internal areas of the residential properties on the upper floors will generally be slightly larger than those on the lower floors because of the reducing thickness of the structural walls on the upper floors (Not applicable).

Please refer to the first page of the section "Floor Plans of Residential Properties in the Phase" for legend of the terms and abbreviation shown on the floor plan above.

\*This part of House 6 has been altered by way of Alterations and Additions works or minor works under the Building Ordinance after completion of the development, the latest condition of which is shown on the relevant part plan. The alteration works are as follow:

1. Structural wall of Lift on 1/F has been amended.
2. Non-structural wall and location of swing doors of Corridor on 1/F have been amended.

因住宅物業的較高樓層的結構牆的厚度遞減，較高樓層的內部面積，一般比較低樓層的內部面積稍大(不適用)。

以上平面圖中顯示之名詞及簡稱請參閱「期數的住宅物業的樓面平面圖」一節首頁。

\*6號洋房此部份因在發展項目落成後根據《建築物條例》進行加建改動的工程或小型工程而有所改動，現狀請參閱有關部份平面圖。該等改動如下：

1. 一樓升降機的結構牆改動。
2. 一樓走廊的非結構牆和掩門位置改動。

Plantation Boulevard House 6  
Plantation Boulevard 6 號洋房



## Second Floor Plan 二樓平面圖



SCALE 0M(米) 2.5M(米) 5.0M(米)

比例 

The internal areas of the residential properties on the upper floors will generally be slightly larger than those on the lower floors because of the reducing thickness of the structural walls on the upper floors (Not applicable).

Please refer to the first page of the section "Floor Plans of Residential Properties in the Phase" for legend of the terms and abbreviation shown on the floor plan above.

\*This part of House 6 has been altered by way of Alterations and Additions works or exempted building works under the Building Ordinance after completion of the development, the latest condition of which is shown on the relevant part plan. The alteration works are as follow:

1. Structural wall of Lift on 2/F has been amended.
2. The partition wall of master closet 1 on 2/F has been removed and non-structural wall extended to 2450mm.
3. Sliding door at Lift Hall on 2/F has been changed to swing door.
4. Location of swing doors of Master Closet 1 on 2/F has been altered.

因住宅物業的較高樓層的結構牆的厚度遞減，較高樓層的內部面積，一般比較低樓層的內部面積稍大(不適用)。

以上平面圖中顯示之名詞及簡稱請參閱「期數的住宅物業的樓面平面圖」一節首頁。

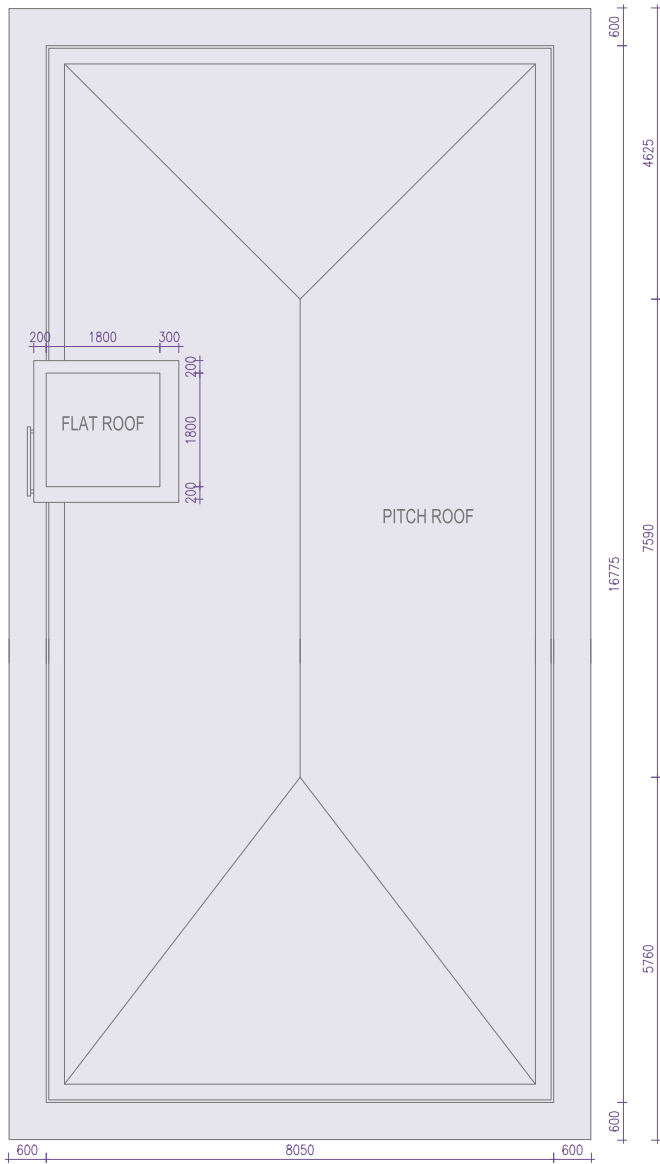
\*6號洋房此部份因在發展項目落成後進行加建改動的工程或獲《建築物條例》豁免的工程而有所改動，現狀請參閱有關部份平面圖。該等改動如下：

1. 二樓升降機的結構牆改動。
2. 二樓主人衣帽間1的間隔牆已移除和非結構牆延長至2450毫米。
3. 二樓升降機大堂的趟門更改為掩門。
4. 二樓主人衣帽間1的掩門位置改動。

Plantation Boulevard House 6  
Plantation Boulevard 6 號洋房



Roof Floor Plan  
天台平面圖



The internal areas of the residential properties on the upper floors will generally be slightly larger than those on the lower floors because of the reducing thickness of the structural walls on the upper floors. (Not applicable)

Please refer to the first page of the section "Floor Plans of Residential Properties in the Phase" for legend of the terms and abbreviation shown on the floor plan above.

因住宅物業的較高樓層的結構牆的厚度遞減，較高樓層的內部面積，一般比較低樓層的內部面積稍大（不適用）。

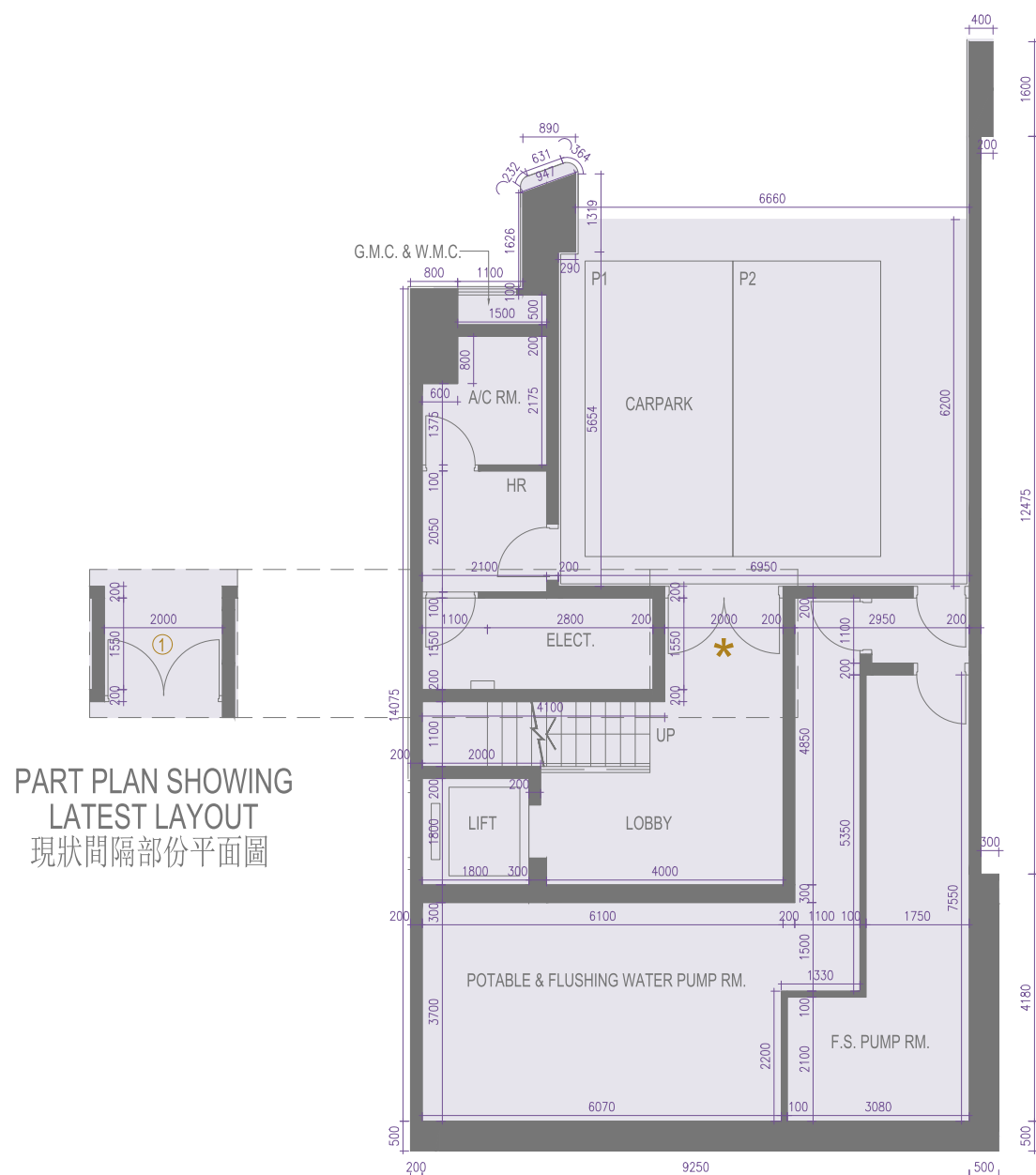
以上平面圖中顯示之名詞及簡稱請參閱「期數的住宅物業的樓面平面圖」一節首頁。

- Notes :
- 1. The dimensions in the floor plans are all structural dimensions in millimetre.

- 備註：
- 1. 樓面平面圖所列之尺寸為以毫米標示之建築結構尺寸。

Plantation Boulevard House 6 Plantation Boulevard 6 號洋房	Basement Floor 地庫	Ground Floor 地下	First Floor 一樓	Second Floor 二樓	Roof Floor 天台
The floor-to-floor height of the residential property (mm) 住宅物業的層與層之間的高度 (毫米)	4000	4200	3500	3000-4325	N/A
The thickness of the floor slabs (excluding plaster) of the residential property (mm) 住宅物業的樓板 (不包括灰泥) 的厚度 (毫米)	2000	400, 600	175, 200, 250, 325	150, 175, 200, 250, 325	325



Plantation Boulevard House 7  
Plantation Boulevard 7 號洋房Basement Floor Plan  
地庫平面圖

SCALE 0M(米) 2.5M(米) 5.0M(米)  
比例

The internal areas of the residential properties on the upper floors will generally be slightly larger than those on the lower floors because of the reducing thickness of the structural walls on the upper floors (Not applicable).

Please refer to the first page of the section "Floor Plans of Residential Properties in the Phase" for legend of the terms and abbreviation shown on the floor plan above.

\*This part of House 7 has been altered by way of exempted building works under the Building Ordinance after completion of the development, the latest condition of which is shown on the relevant part plan. The alteration works are as follows:

1. Layout and direction of swing doors of Lobby on B/F have been amended.

因住宅物業的較高樓層的結構牆的厚度遞減，較高樓層的內部面積，一般比較低樓層的內部面積稍大(不適用)。

以上平面圖中顯示之名詞及簡稱請參閱「期數的住宅物業的樓面平面圖」一節首頁。

\*7號洋房此部份因在發展項目落成後進行獲《建築物條例》豁免的工程而有所改動，現狀請參閱有關部份平面圖。該等改動如下：

1. 地庫大堂的掩門布局 and 方向改動。

Plantation Boulevard House 7  
Plantation Boulevard 7 號洋房

Ground Floor Plan  
地下平面圖



The internal areas of the residential properties on the upper floors will generally be slightly larger than those on the lower floors because of the reducing thickness of the structural walls on the upper floors (Not applicable).

Please refer to the first page of the section "Floor Plans of Residential Properties in the Phase" for legend of the terms and abbreviation shown on the floor plan above.

\*This part of House 7 has been altered by way of exempted building works under the Building Ordinance after completion of the development, the latest condition of which is shown on the relevant part plan. The alteration works are as follow:

1. G/F Yard planter has been amended.
2. Non-structural wall within Foyer on G/F has been removed.
3. Non-structural wall within Kitchen on G/F has been removed.

因住宅物業的較高樓層的結構牆的厚度遞減，較高樓層的內部面積，一般比較低樓層的內部面積稍大（不適用）。

以上平面圖中顯示之名詞及簡稱請參閱「期數的住宅物業的樓面平面圖」一節首頁。

\*7號洋房此部份因在發展項目落成後進行獲《建築物條例》豁免的工程而有所改動，現狀請參閱有關部份平面圖。該等改動如下：

1. 地下庭院花槽改動。
2. 地下前廳的非結構牆已移除。
3. 地下廚房的非結構牆已移除。

Plantation Boulevard House 7  
Plantation Boulevard 7 號洋房First Floor Plan  
一樓平面圖

SCALE 0M(米) 2.5M(米) 5.0M(米)  
比例

The internal areas of the residential properties on the upper floors will generally be slightly larger than those on the lower floors because of the reducing thickness of the structural walls on the upper floors (Not applicable).

Please refer to the first page of the section "Floor Plans of Residential Properties in the Phase" for legend of the terms and abbreviation shown on the floor plan above.

\*This part of House 7 has been altered by way of Alterations and Additions works or minor works under the Building Ordinance after completion of the development, the latest condition of which is shown on the relevant part plan. The alteration works are as follow:

1. Structural wall of Lift on 1/F has been amended.
2. Non-structural wall and location of swing doors of Corridor on 1/F have been amended.

因住宅物業的較高樓層的結構牆的厚度遞減，較高樓層的內部面積，一般比較低樓層的內部面積稍大(不適用)。

以上平面圖中顯示之名詞及簡稱請參閱「期數的住宅物業的樓面平面圖」一節首頁。

\*7號洋房此部份因在發展項目落成後根據《建築物條例》進行加建改動的工程或小型工程而有所改動，現狀請參閱有關部份平面圖。該等改動如下：

1. 一樓升降機的結構牆改動。
2. 一樓走廊的非結構牆和掩門位置改動。

Plantation Boulevard House 7  
Plantation Boulevard 7 號洋房Second Floor Plan  
二樓平面圖

SCALE 0M(米) 2.5M(米) 5.0M(米)  
比例

The internal areas of the residential properties on the upper floors will generally be slightly larger than those on the lower floors because of the reducing thickness of the structural walls on the upper floors (Not applicable).

Please refer to the first page of the section "Floor Plans of Residential Properties in the Phase" for legend of the terms and abbreviation shown on the floor plan above.

\*This part of House 7 has been altered by way of Alterations and Additions works or exempted building works under the Building Ordinance after completion of the development, the latest condition of which is shown on the relevant part plan. The alteration works are as follow:

1. Structural wall of Lift on 2/F has been amended.
2. The partition wall of master closet 1 on 2/F has been removed and non-structural wall extended to 2450mm.
3. Sliding door at Lift Hall on 2/F has been changed to swing door.
4. Location of swing doors of Master Closet 1 on 2/F has been altered.

因住宅物業的較高樓層的結構牆的厚度遞減，較高樓層的內部面積，一般比較低樓層的內部面積稍大（不適用）。

以上平面圖中顯示之名詞及簡稱請參閱「期數的住宅物業的樓面平面圖」一節首頁。

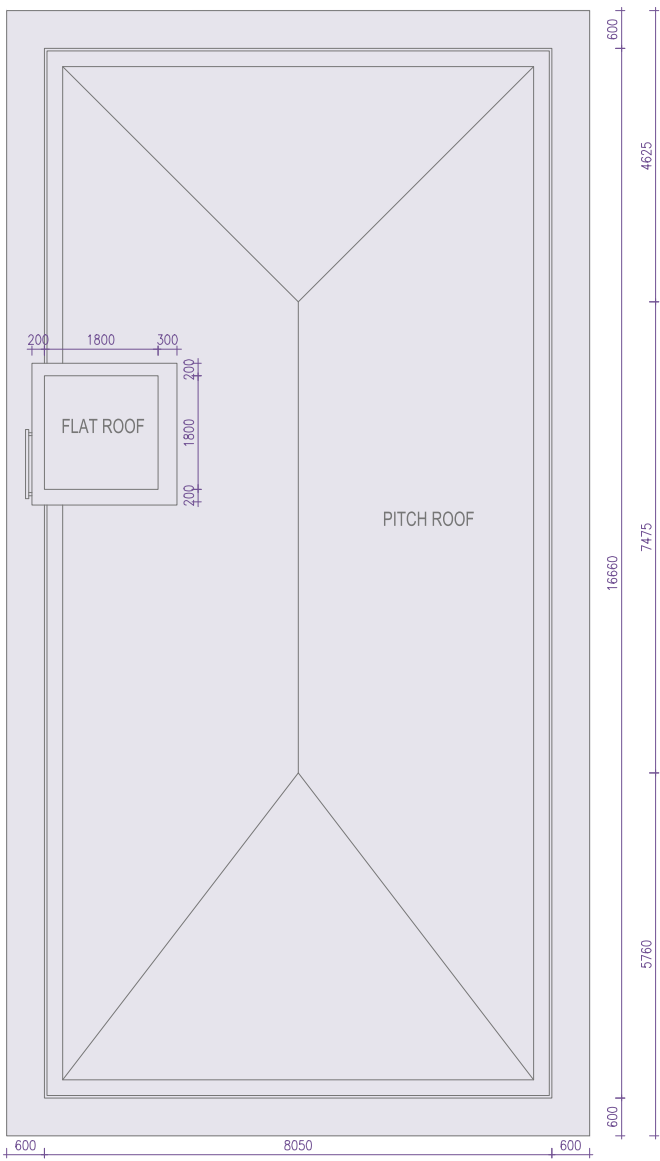
\*7號洋房此部份因在發展項目落成後進行加建改動的工程或獲《建築物條例》豁免的工程而有所改動，現狀請參閱有關部份平面圖。該等改動如下：

1. 二樓升降機的結構牆改動。
2. 二樓主人衣帽間1的間隔牆已移除和非結構牆延長至2450毫米。
3. 二樓升降機大堂的趟門更改為掩門。
4. 二樓主人衣帽間1的掩門位置改動。

Plantation Boulevard House 7  
Plantation Boulevard 7 號洋房



Roof Floor Plan  
天台平面圖



The internal areas of the residential properties on the upper floors will generally be slightly larger than those on the lower floors because of the reducing thickness of the structural walls on the upper floors. (Not applicable)

Please refer to the first page of the section "Floor Plans of Residential Properties in the Phase" for legend of the terms and abbreviation shown on the floor plan above.

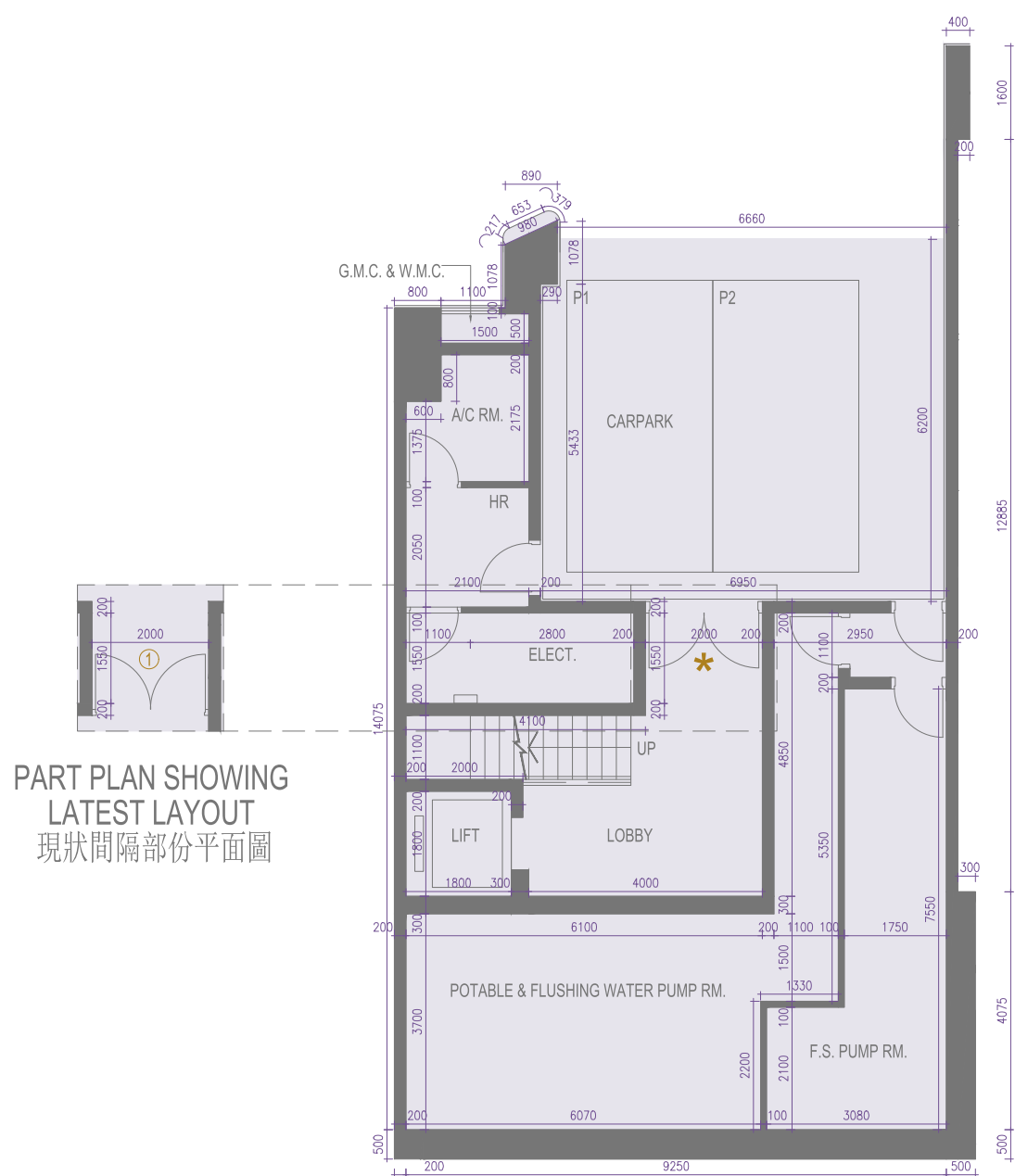
因住宅物業的較高樓層的結構牆的厚度遞減，較高樓層的內部面積，一般比較低樓層的內部面積稍大（不適用）。

以上平面圖中顯示之名詞及簡稱請參閱「期數的住宅物業的樓面平面圖」一節首頁。

- Notes :
- 1. The dimensions in the floor plans are all structural dimensions in millimetre.

- 備註：
- 1. 樓面平面圖所列之尺寸為以毫米標示之建築結構尺寸。

Plantation Boulevard House 7 Plantation Boulevard 7 號洋房	Basement Floor 地庫	Ground Floor 地下	First Floor 一樓	Second Floor 二樓	Roof Floor 天台
The floor-to-floor height of the residential property (mm) 住宅物業的層與層之間的高度 (毫米)	4000	4200	3500	3000-4325	N/A
The thickness of the floor slabs (excluding plaster) of the residential property (mm) 住宅物業的樓板 (不包括灰泥) 的厚度 (毫米)	2000	400, 600	175, 200, 250, 325	150, 175, 200, 250, 325	325

Plantation Boulevard House 8  
Plantation Boulevard 8 號洋房Basement Floor Plan  
地庫平面圖

SCALE 0M(米) 2.5M(米) 5.0M(米)  
比例

The internal areas of the residential properties on the upper floors will generally be slightly larger than those on the lower floors because of the reducing thickness of the structural walls on the upper floors (Not applicable).

Please refer to the first page of the section "Floor Plans of Residential Properties in the Phase" for legend of the terms and abbreviation shown on the floor plan above.

\*This part of House 8 has been altered by way of exempted building works under the Building Ordinance after completion of the development, the latest condition of which is shown on the relevant part plan. The alteration works are as follows:

1. Layout and direction of swing doors of Lobby on B/F have been amended.

因住宅物業的較高樓層的結構牆的厚度遞減，較高樓層的內部面積，一般比較低樓層的內部面積稍大(不適用)。

以上平面圖中顯示之名詞及簡稱請參閱「期數的住宅物業的樓面平面圖」一節首頁。

\*8號洋房此部份因在發展項目落成後進行獲《建築物條例》豁免的工程而有所改動，現狀請參閱有關部份平面圖。該等改動如下：

1. 地庫大堂的掩門布局 and 方向改動。



Plantation Boulevard House 8  
Plantation Boulevard 8 號洋房

Ground Floor Plan  
地下平面圖



The internal areas of the residential properties on the upper floors will generally be slightly larger than those on the lower floors because of the reducing thickness of the structural walls on the upper floors (Not applicable).

Please refer to the first page of the section "Floor Plans of Residential Properties in the Phase" for legend of the terms and abbreviation shown on the floor plan above.

\*This part of House 8 has been altered by way of exempted building works under the Building Ordinance after completion of the development, the latest condition of which is shown on the relevant part plan. The alteration works are as follow:

1. G/F Yard planter has been amended.
2. Non-structural wall within Foyer on G/F has been removed.
3. Non-structural wall within Kitchen on G/F has been removed.

因住宅物業的較高樓層的結構牆的厚度遞減，較高樓層的內部面積，一般比較低樓層的內部面積稍大(不適用)。

以上平面圖中顯示之名詞及簡稱請參閱「期數的住宅物業的樓面平面圖」一節首頁。

\*8號洋房此部份因在發展項目落成後進行獲《建築物條例》豁免的工程而有所改動，現狀請參閱有關部份平面圖。該等改動如下：

1. 地下庭院花槽改動。
2. 地下前廳的非結構牆已移除。
3. 地下廚房的非結構牆已移除。

Plantation Boulevard House 8  
Plantation Boulevard 8 號洋房First Floor Plan  
一樓平面圖

The internal areas of the residential properties on the upper floors will generally be slightly larger than those on the lower floors because of the reducing thickness of the structural walls on the upper floors (Not applicable).

Please refer to the first page of the section "Floor Plans of Residential Properties in the Phase" for legend of the terms and abbreviation shown on the floor plan above.

\*This part of House 8 has been altered by way of Alterations and Additions works or minor works under the Building Ordinance after completion of the development, the latest condition of which is shown on the relevant part plan. The alteration works are as follow:

1. Structural wall of Lift on 1/F has been amended.
2. Non-structural wall and location of swing doors of Corridor on 1/F have been amended

因住宅物業的較高樓層的結構牆的厚度遞減，較高樓層的內部面積，一般比較低樓層的內部面積稍大(不適用)。

以上平面圖中顯示之名詞及簡稱請參閱「期數的住宅物業的樓面平面圖」一節首頁。

\*8號洋房此部份因在發展項目落成後根據《建築物條例》進行加建改動的工程或小型工程而有所改動，現狀請參閱有關部份平面圖。該等改動如下：

1. 一樓升降機的結構牆改動。
2. 一樓走廊的非結構牆和掩門位置改動。

Plantation Boulevard House 8  
Plantation Boulevard 8 號洋房Second Floor Plan  
二樓平面圖

SCALE 0M(米) 2.5M(米) 5.0M(米)  
比例

The internal areas of the residential properties on the upper floors will generally be slightly larger than those on the lower floors because of the reducing thickness of the structural walls on the upper floors (Not applicable).

Please refer to the first page of the section "Floor Plans of Residential Properties in the Phase" for legend of the terms and abbreviation shown on the floor plan above.

\*This part of House 8 has been altered by way of Alterations and Additions works or exempted building works under the Building Ordinance after completion of the development, the latest condition of which is shown on the relevant part plan. The alteration works are as follow:

1. Structural wall of Lift on 2/F has been amended.
2. The partition wall of master closet 1 on 2/F has been removed and non-structural wall extended to 2450mm.
3. Sliding door at Lift Hall on 2/F has been changed to swing door.
4. Location of swing doors of Master Closet 1 on 2/F has been altered.

因住宅物業的較高樓層的結構牆的厚度遞減，較高樓層的內部面積，一般比較低樓層的內部面積稍大(不適用)。

以上平面圖中顯示之名詞及簡稱請參閱「期數的住宅物業的樓面平面圖」一節首頁。

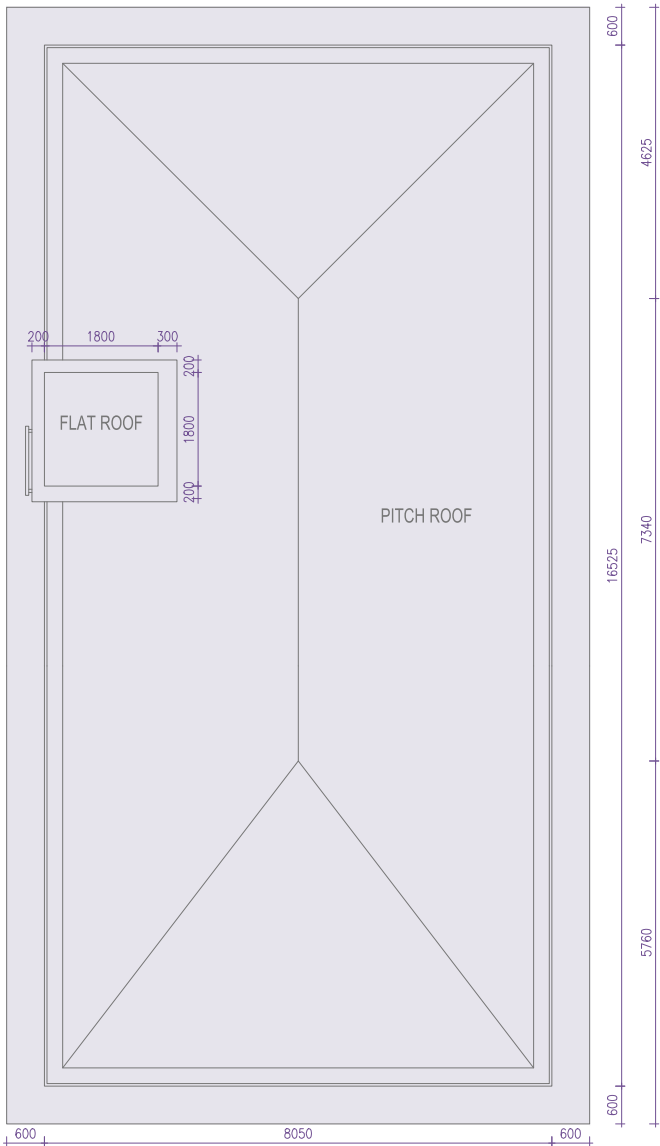
\*8號洋房此部份因在發展項目落成後進行加建改動的工程或獲《建築物條例》豁免的工程而有所改動，現狀請參閱有關部份平面圖。該等改動如下：

1. 二樓升降機的結構牆改動。
2. 二樓主人衣帽間1的間隔牆已移除和非結構牆延長至2450毫米。
3. 二樓升降機大堂的趟門更改為掩門。
4. 二樓主人衣帽間1的掩門位置改動。

Plantation Boulevard House 8  
Plantation Boulevard 8 號洋房



Roof Floor Plan  
天台平面圖



The internal areas of the residential properties on the upper floors will generally be slightly larger than those on the lower floors because of the reducing thickness of the structural walls on the upper floors. (Not applicable)

Please refer to the first page of the section "Floor Plans of Residential Properties in the Phase" for legend of the terms and abbreviation shown on the floor plan above.

因住宅物業的較高樓層的結構牆的厚度遞減，較高樓層的內部面積，一般比較低樓層的內部面積稍大（不適用）。

以上平面圖中顯示之名詞及簡稱請參閱「期數的住宅物業的樓面平面圖」一節首頁。

- Notes :
- 1. The dimensions in the floor plans are all structural dimensions in millimetre.

- 備註：
- 1. 樓面平面圖所列之尺寸為以毫米標示之建築結構尺寸。

Plantation Boulevard House 8 Plantation Boulevard 8 號洋房	Basement Floor 地庫	Ground Floor 地下	First Floor 一樓	Second Floor 二樓	Roof Floor 天台
The floor-to-floor height of the residential property (mm) 住宅物業的層與層之間的高度 (毫米)	4000	4200	3500	3000-4325	N/A
The thickness of the floor slabs (excluding plaster) of the residential property (mm) 住宅物業的樓板 (不包括灰泥) 的厚度 (毫米)	2000	400, 600	175, 200, 250, 325	150, 175, 200, 250, 325	325

Plantation Boulevard House 9  
Plantation Boulevard 9 號洋房Basement Floor Plan  
地庫平面圖

SCALE 0M(米) 2.5M(米) 5.0M(米)  
比例

The internal areas of the residential properties on the upper floors will generally be slightly larger than those on the lower floors because of the reducing thickness of the structural walls on the upper floors (Not applicable).

Please refer to the first page of the section "Floor Plans of Residential Properties in the Phase" for legend of the terms and abbreviation shown on the floor plan above.

\*This part of House 9 has been altered by way of exempted building works under the Building Ordinance after completion of the development, the latest condition of which is shown on the relevant part plan. The alteration works are as follows:

1. Layout of swing doors of Lobby on B/F have been amended.

因住宅物業的較高樓層的結構牆的厚度遞減，較高樓層的內部面積，一般比較低樓層的內部面積稍大(不適用)。

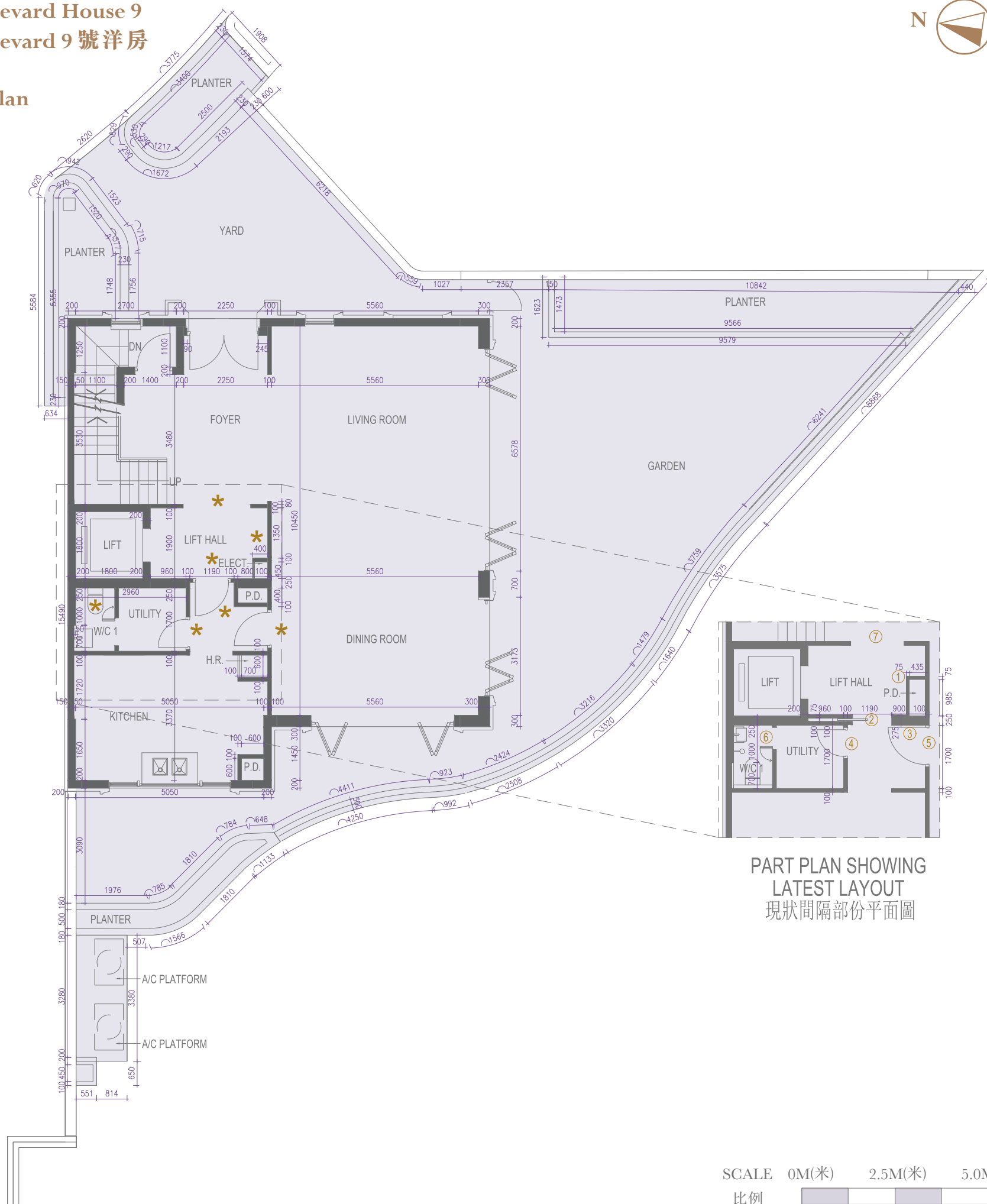
以上平面圖中顯示之名詞及簡稱請參閱「期數的住宅物業的樓面平面圖」一節首頁。

\*9號洋房此部份因在發展項目落成後進行獲《建築物條例》豁免的工程而有所改動，現狀請參閱有關部份平面圖。該等改動如下：

1. 地庫大堂的掩門布局改動。

Plantation Boulevard House 9  
Plantation Boulevard 9 號洋房

Ground Floor Plan  
地下平面圖



The internal areas of the residential properties on the upper floors will generally be slightly larger than those on the lower floors because of the reducing thickness of the structural walls on the upper floors (Not applicable).

Please refer to the first page of the section "Floor Plans of Residential Properties in the Phase" for legend of the terms and abbreviation shown on the floor plan above.

\*This part of House 9 has been altered by way of minor works or exempted building works under the Building Ordinance after completion of the development, the latest condition of which is shown on the relevant part plan. The alteration works are as follow:

1. Non-structural wall between Foyer and Kitchen on G/F has been amended.
2. Swing door between Foyer and Kitchen changed to sliding door.
3. Non-structural wall and Pipes within Kitchen on G/F has been amended.
4. Location of swing doors within Kitchen has been amended.
5. Location of swing doors within Utility has been amended.
6. Non-structural wall and folding door of W/C 1 has been amended. Positions of sanitary fittings and drainage works within W/C 1 has been amended.
7. Non-structural wall between Foyer and Lift Hall has been amended.

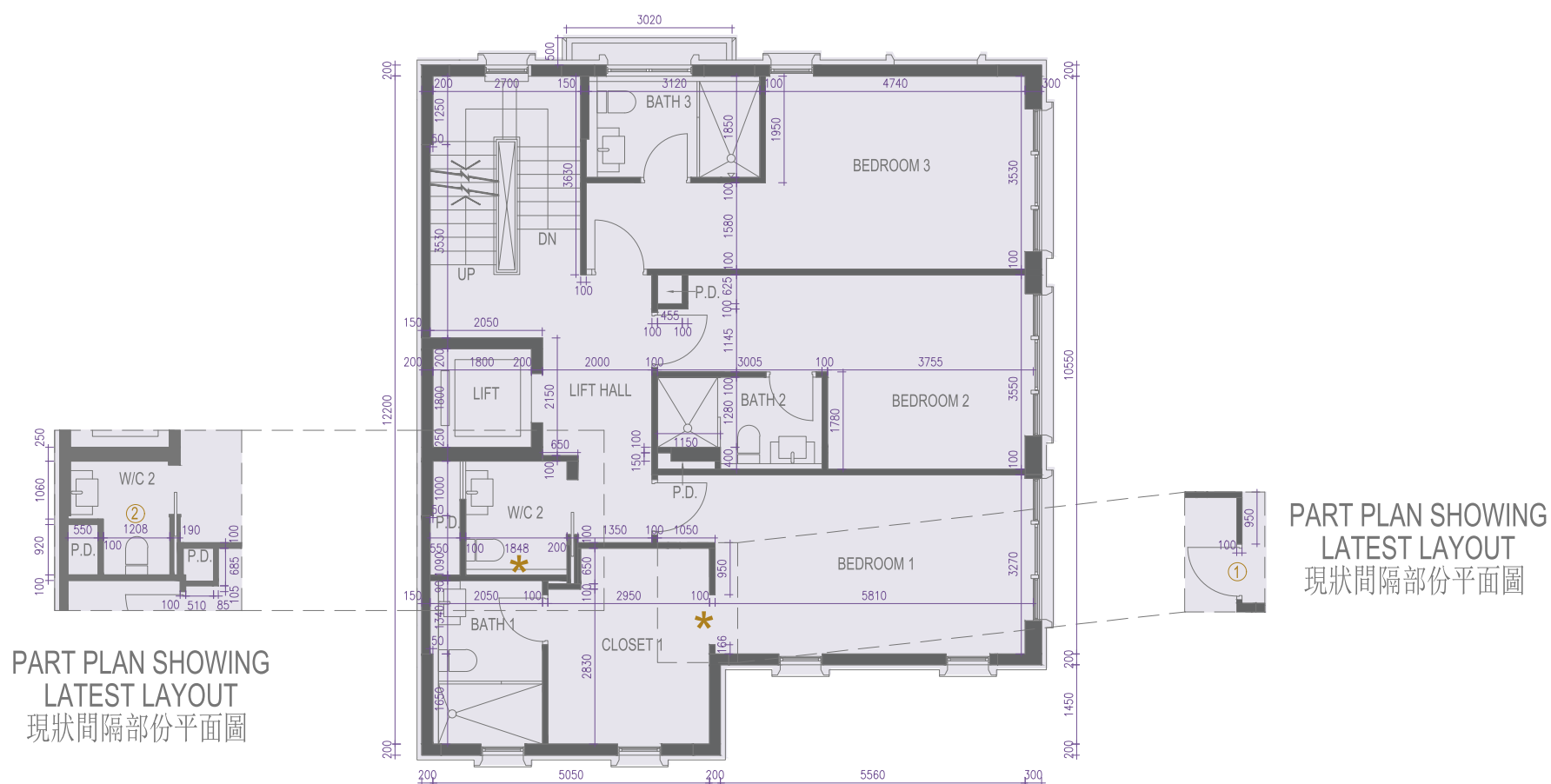
因住宅物業的較高樓層的結構牆的厚度遞減，較高樓層的內部面積，一般比較低樓層的內部面積稍大（不適用）。

以上平面圖中顯示之名詞及簡稱請參閱「期數的住宅物業的樓面平面圖」一節首頁。

\*9號洋房此部份因在發展項目落成後進行小型工程或獲《建築物條例》豁免的工程而有所改動，現狀請參閱有關部份平面圖。該等改動如下：

1. 前廳與廚房之間的非結構牆布局改動。
2. 前廳與廚房之間的掩門更改為趟門。
3. 廚房的非結構牆和喉管布局改動。
4. 廚房的擺門位置改動。
5. 工作間的擺門位置改動。
6. 洗手間1的非結構牆布局和摺門方向改動。洗手間1的衛浴潔具及排水渠位置改動。
7. 前廳與升降機大堂之間的非結構牆改動。



Plantation Boulevard House 9  
Plantation Boulevard 9 號洋房First Floor Plan  
一樓平面圖

SCALE 0M(米) 2.5M(米) 5.0M(米)  
比例

The internal areas of the residential properties on the upper floors will generally be slightly larger than those on the lower floors because of the reducing thickness of the structural walls on the upper floors (Not applicable).

Please refer to the first page of the section "Floor Plans of Residential Properties in the Phase" for legend of the terms and abbreviation shown on the floor plan above.

\*This part of House 9 has been altered by way of minor works or exempted building works under the Building Ordinance after completion of the development, the latest condition of which is shown on the relevant part plan. The alteration works are as follow:

1. Swing door has been added to Closet 1 on 1/F.
2. Non-structural walls and pipes between W/C 2 and P.D. and W/C 2 and Closet 1 on 1/F have been amended.

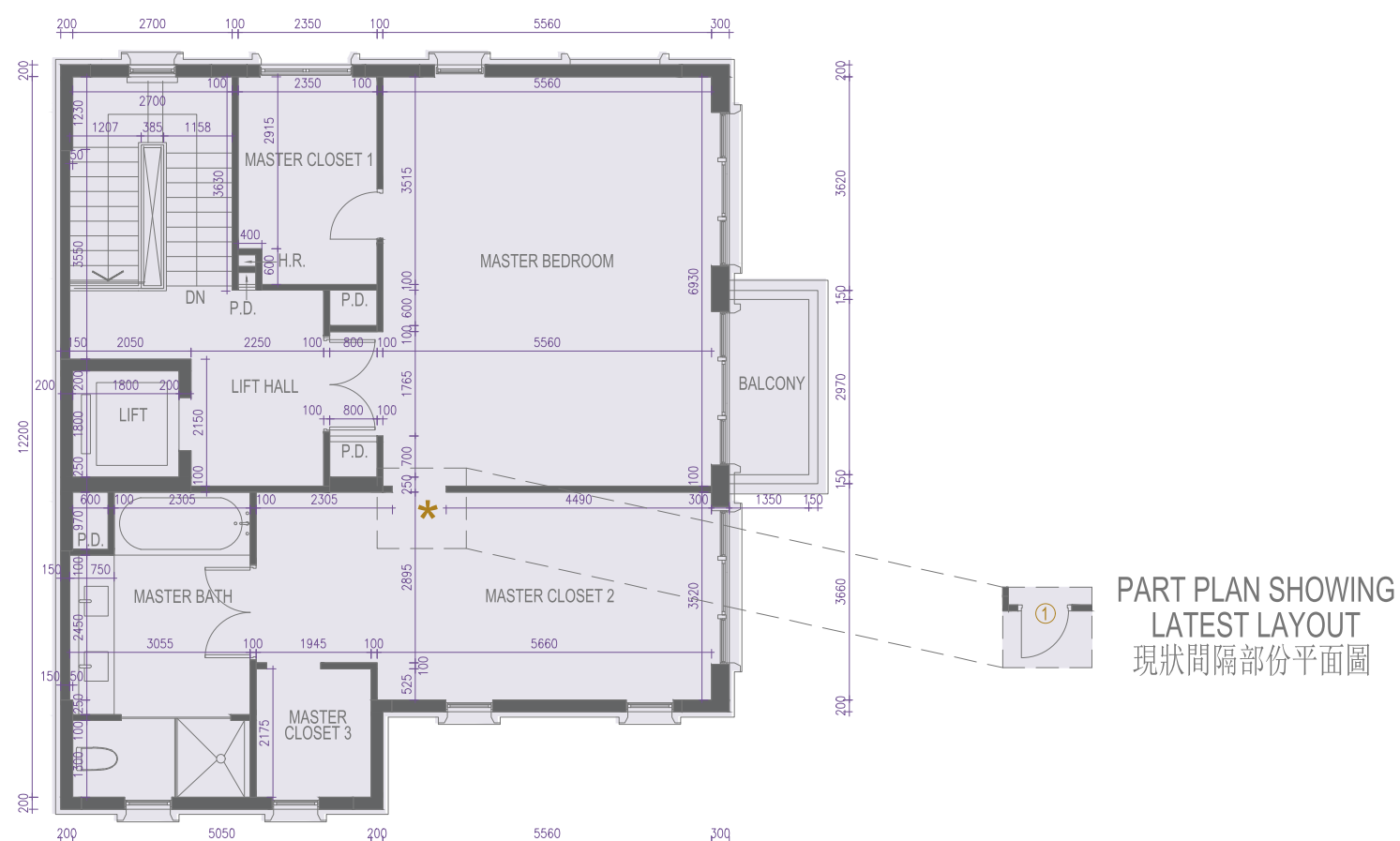
因住宅物業的較高樓層的結構牆的厚度遞減，較高樓層的內部面積，一般比較低樓層的內部面積稍大(不適用)。

以上平面圖中顯示之名詞及簡稱請參閱「期數的住宅物業的樓面平面圖」一節首頁。

\*9號洋房此部份因在發展項目落成後進行小型工程或獲《建築物條例》豁免的工程而有所改動，現狀請參閱有關部份平面圖。該等改動如下：

1. 一樓衣帽間1加建擺門。
2. 一樓洗手間2與管槽和洗手間2與衣帽間1之間的非結構牆和喉管改動。



Plantation Boulevard House 9  
Plantation Boulevard 9 號洋房Second Floor Plan  
二樓平面圖

SCALE 0M(米) 2.5M(米) 5.0M(米)  
比例

The internal areas of the residential properties on the upper floors will generally be slightly larger than those on the lower floors because of the reducing thickness of the structural walls on the upper floors (Not applicable).

Please refer to the first page of the section "Floor Plans of Residential Properties in the Phase" for legend of the terms and abbreviation shown on the floor plan above.

\*This part of House 9 has been altered by way of exempted building works under the Building Ordinance after completion of the development, the latest condition of which is shown on the relevant part plan. The alteration works are as follow:

1. Swing door has been added to Master Closet 2 on 2/F.

因住宅物業的較高樓層的結構牆的厚度遞減，較高樓層的內部面積，一般比較低樓層的內部面積稍大(不適用)。

以上平面圖中顯示之名詞及簡稱請參閱「期數的住宅物業的樓面平面圖」一節首頁。

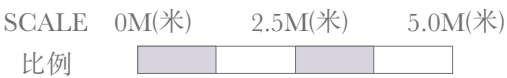
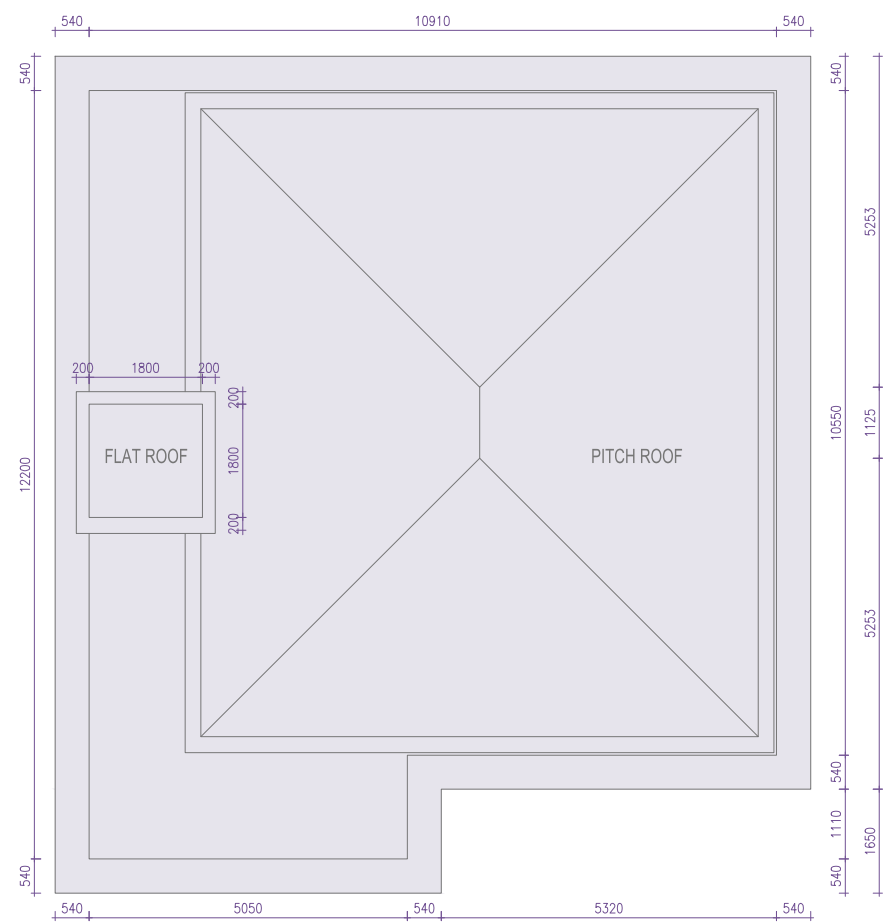
\*9號洋房此部份因在發展項目落成後進行獲《建築物條例》豁免的工程而有所改動，現狀請參閱有關部份平面圖。該等改動如下：

1. 二樓主人衣帽間2加建掩門。

Plantation Boulevard House 9  
Plantation Boulevard 9 號洋房



Roof Floor Plan  
天台平面圖



The internal areas of the residential properties on the upper floors will generally be slightly larger than those on the lower floors because of the reducing thickness of the structural walls on the upper floors. (Not applicable)

Please refer to the first page of the section "Floor Plans of Residential Properties in the Phase" for legend of the terms and abbreviation shown on the floor plan above.

- Notes :
- 1. The dimensions in the floor plans are all structural dimensions in millimetre.

因住宅物業的較高樓層的結構牆的厚度遞減，較高樓層的內部面積，一般比較低樓層的內部面積稍大（不適用）。

以上平面圖中顯示之名詞及簡稱請參閱「期數的住宅物業的樓面平面圖」一節首頁。

- 備註：
- 1. 樓面平面圖所列之尺寸為以毫米標示之建築結構尺寸。

Plantation Boulevard House 9 Plantation Boulevard 9 號洋房	Basement Floor 地庫	Ground Floor 地下	First Floor 一樓	Second Floor 二樓	Roof Floor 天台
The floor-to-floor height of the residential property (mm) 住宅物業的層與層之間的高度 (毫米)	4140	4200	3500	3000-4275	N/A
The thickness of the floor slabs (excluding plaster) of the residential property (mm) 住宅物業的樓板 (不包括灰泥) 的厚度 (毫米)	2000	400, 600	150, 175, 200, 250	150, 175, 200, 250	325