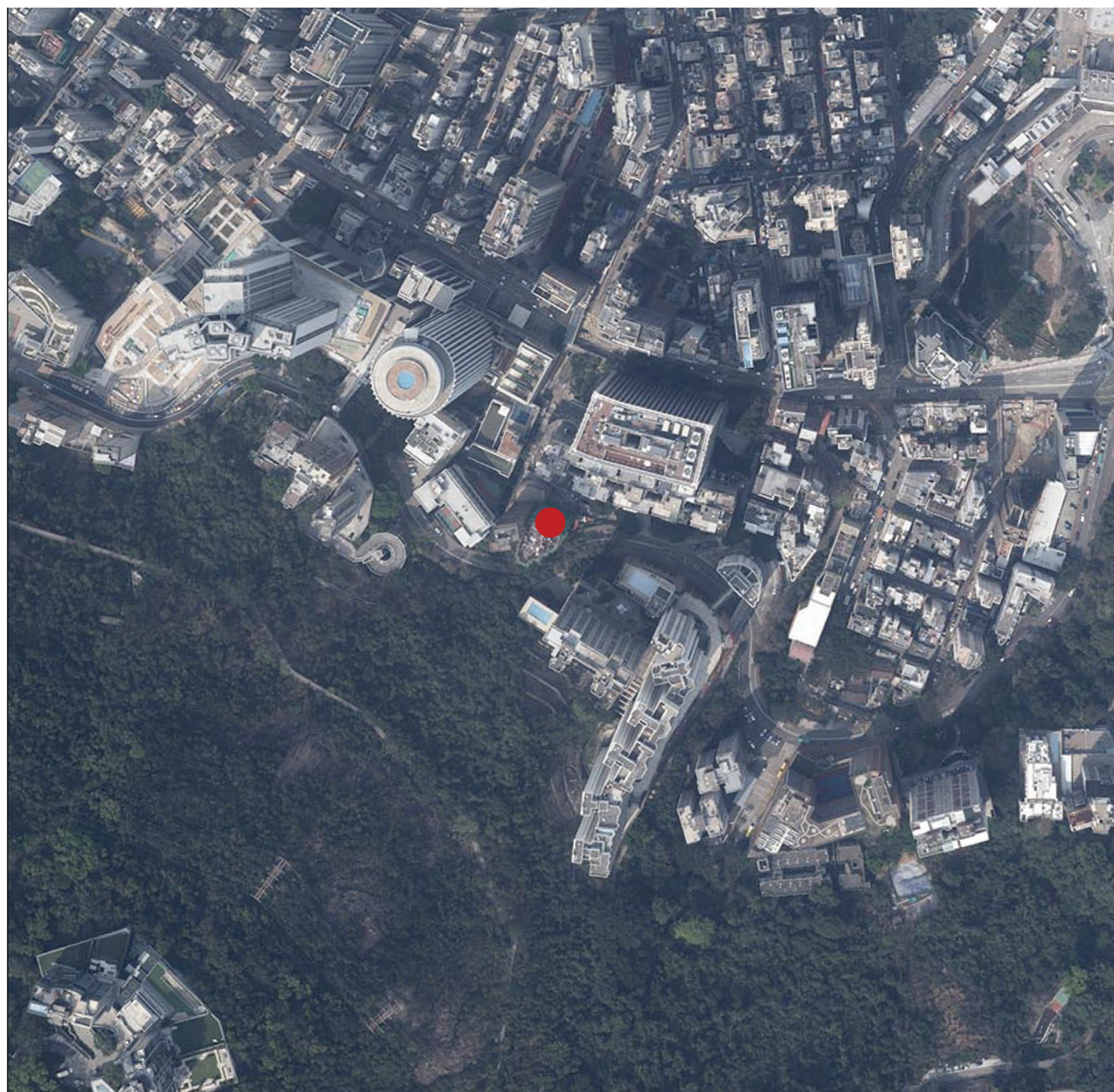


## AERIAL PHOTOGRAPH OF THE DEVELOPMENT

## 發展項目的鳥瞰照片



Adopted from part of the Aerial Photograph taken by the Survey and Mapping Office of Lands Department at a flying height of 6,000 feet, photo No. E219060C, dated 8<sup>th</sup> March 2024.

摘錄自地政總署測繪處在6,000呎的飛行高度拍攝之鳥瞰照片，照片編號E219060C，飛行日期：2024年3月8日。

Survey and Mapping Office, Lands Department, The Government of HKSAR © copyright reserved - reproduction by permission only.

香港特別行政區政府地政總署測繪處版權所有，未經許可，不得複製。

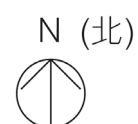
## Notes:

1. The Aerial Photograph may show more than the area required under the Residential Properties (First-hand Sales) Ordinance due to technical reason.
2. The Vendor advises prospective purchasers to conduct an on-site visit for a better understanding of the Development site, its surrounding environment and the public facilities nearby.

## 備註：

1. 由於技術原因，鳥瞰照片可能顯示多於《一手住宅物業銷售條例》所要求顯示的面積。
2. 賣方建議準買家到有關發展地盤作實地考察，以對該發展地盤、其周邊地區環境及附近的公共設施有較佳了解。

● Location of the Development  
發展項目的位置





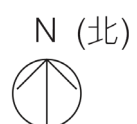
## AERIAL PHOTOGRAPH OF THE DEVELOPMENT

## 發展項目的鳥瞰照片



This blank area falls outside the coverage of the relevant aerial photograph  
鳥瞰照片並不覆蓋本空白範圍

● Location of the Development  
發展項目的位置



Adopted from part of the Aerial Photograph taken by the Survey and Mapping Office of Lands Department at a flying height of 6,000 feet, photo No. E226417C, dated 7<sup>th</sup> August 2024.

摘錄自地政總署測繪處在6,000呎的飛行高度拍攝之鳥瞰照片，照片編號E226417C，飛行日期：2024年8月7日。

Survey and Mapping Office, Lands Department, The Government of HKSAR © copyright reserved - reproduction by permission only.

香港特別行政區政府地政總署測繪處版權所有，未經許可，不得複製。

## Notes:

1. The Aerial Photograph may show more than the area required under the Residential Properties (First-hand Sales) Ordinance due to technical reason.
2. The Vendor advises prospective purchasers to conduct an on-site visit for a better understanding of the Development site, its surrounding environment and the public facilities nearby.

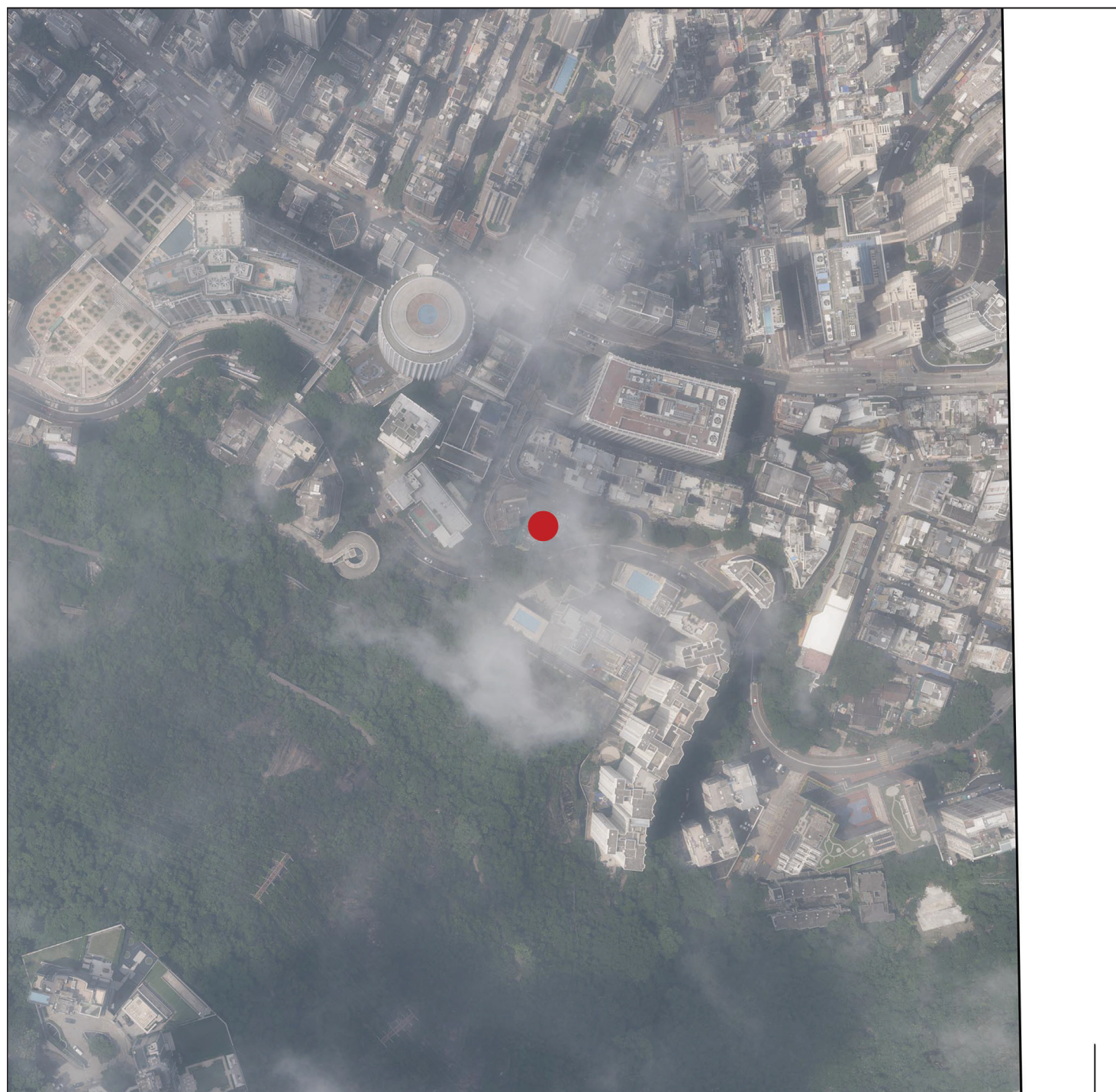
## 備註：

1. 由於技術原因，鳥瞰照片可能顯示多於《一手住宅物業銷售條例》所要求顯示的面積。
2. 賣方建議準買家到有關發展地盤作實地考察，以對該發展地盤、其周邊地區環境及附近的公共設施有較佳了解。



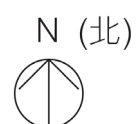
## AERIAL PHOTOGRAPH OF THE DEVELOPMENT

## 發展項目的鳥瞰照片



This blank area falls outside the coverage of the relevant aerial photograph  
鳥瞰照片並不覆蓋本空白範圍

● Location of the Development  
發展項目的位置



Adopted from part of the Aerial Photograph taken by the Survey and Mapping Office of Lands Department at a flying height of 6,000 feet, photo No. E226418C, dated 7<sup>th</sup> August 2024.

摘錄自地政總署測繪處在6,000呎的飛行高度拍攝之鳥瞰照片，照片編號E226418C，飛行日期：2024年8月7日。

Survey and Mapping Office, Lands Department, The Government of HKSAR © copyright reserved - reproduction by permission only.

香港特別行政區政府地政總署測繪處版權所有，未經許可，不得複製。

## Notes:

1. The Aerial Photograph may show more than the area required under the Residential Properties (First-hand Sales) Ordinance due to technical reason.
2. The Vendor advises prospective purchasers to conduct an on-site visit for a better understanding of the Development site, its surrounding environment and the public facilities nearby.

## 備註：

1. 由於技術原因，鳥瞰照片可能顯示多於《一手住宅物業銷售條例》所要求顯示的面積。
2. 賣方建議準買家到有關發展地盤作實地考察，以對該發展地盤、其周邊地區環境及附近的公共設施有較佳了解。