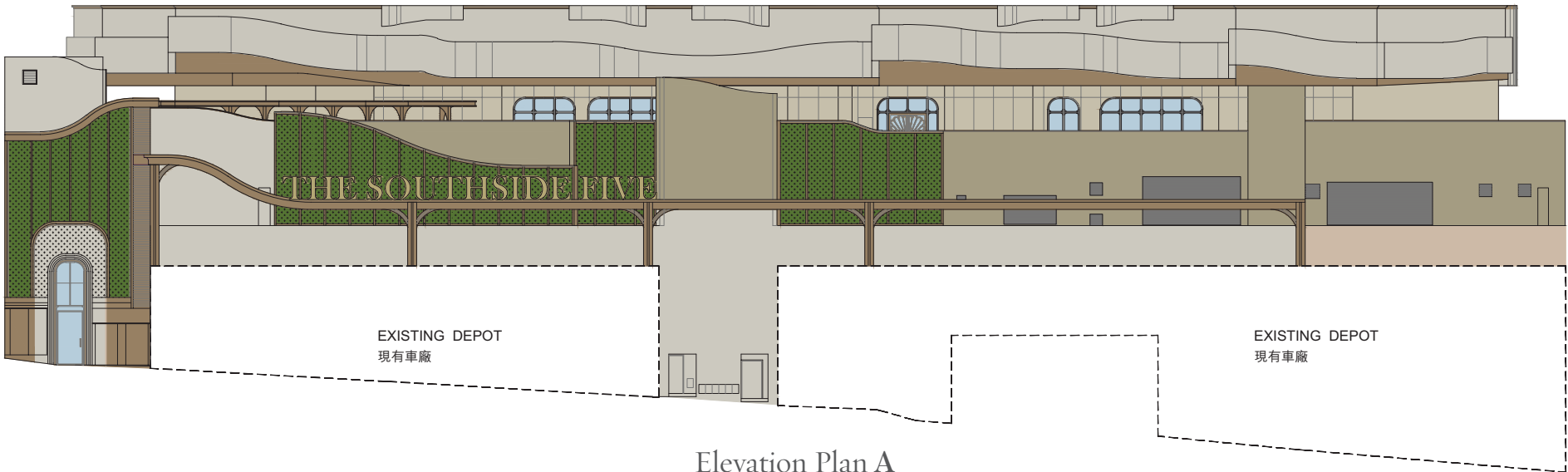


Elevation plan

立面圖



Elevation Plan A

立面圖A



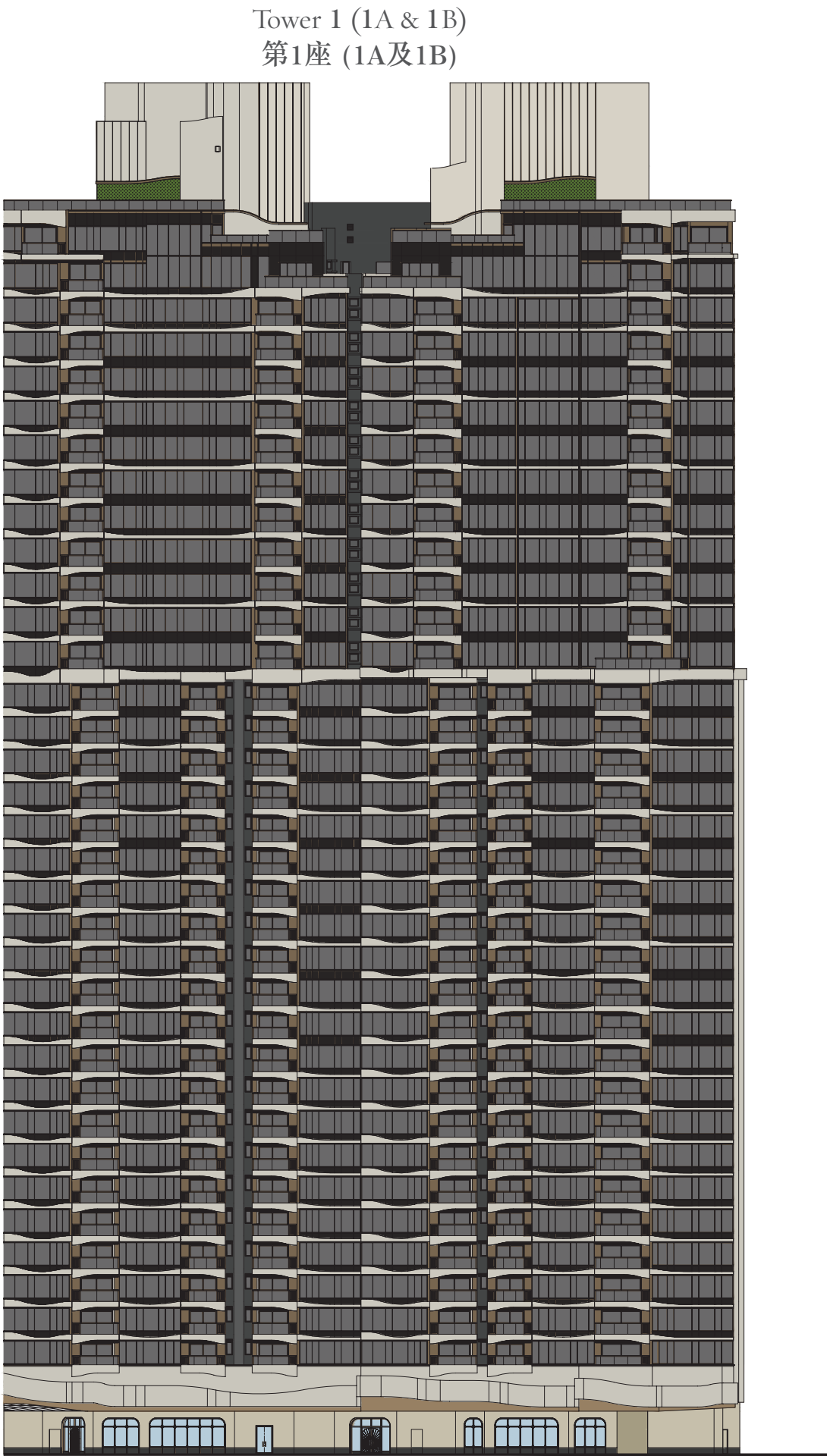
The Authorized Person for the Phase has certified that the elevations shown on these plans:

- are prepared on the basis of the approved building plans for the Phase as of 13 December 2024; and
- are in general accordance with the outward appearance of the Phase.

期數的認可人士已證明此等圖所顯示的立面：

- 以2024年12月13日的情況為準的期數的經批准的建築圖則為基礎擬備；及
- 大致上與此期數的外觀一致。

Elevation plan
立面圖



Elevation Plan 1
立面圖1



Elevation Plan 2
立面圖2



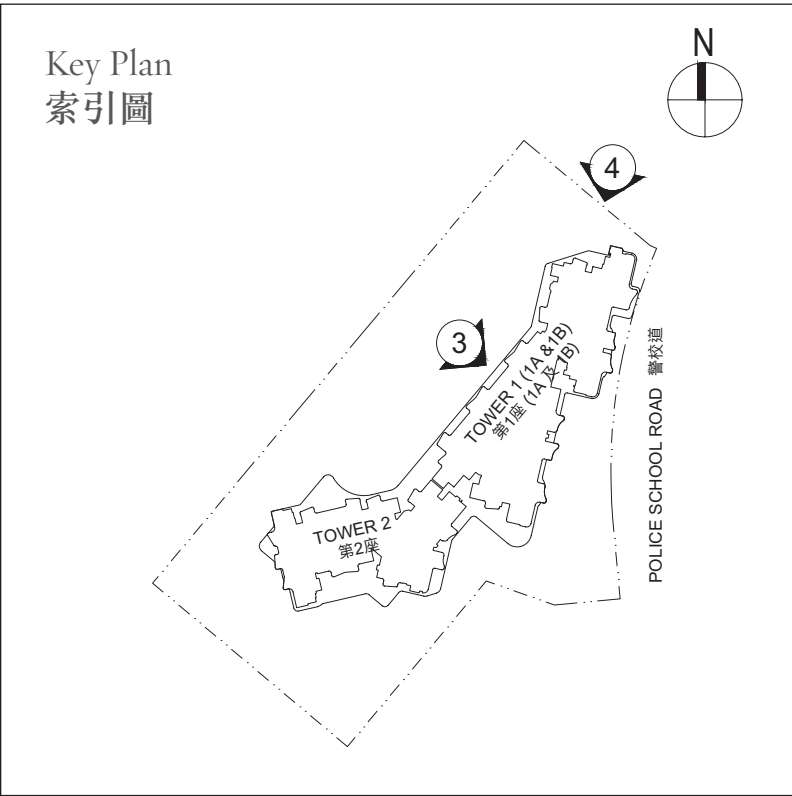
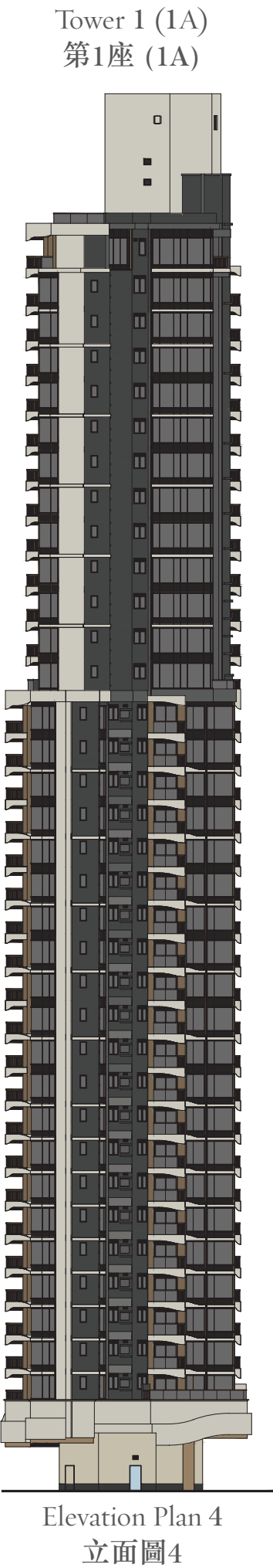
The Authorized Person for the Phase has certified that the elevations shown on these plans:

1. are prepared on the basis of the approved building plans for the Phase as of 13 May 2025; and
2. are in general accordance with the outward appearance of the Phase.

期數的認可人士已證明此等圖所顯示的立面：

1. 以2025年5月13日的情況為準的期數的經批准的建築圖則為基礎擬備；及
2. 大致上與此期數的外觀一致。

Elevation plan
立面圖



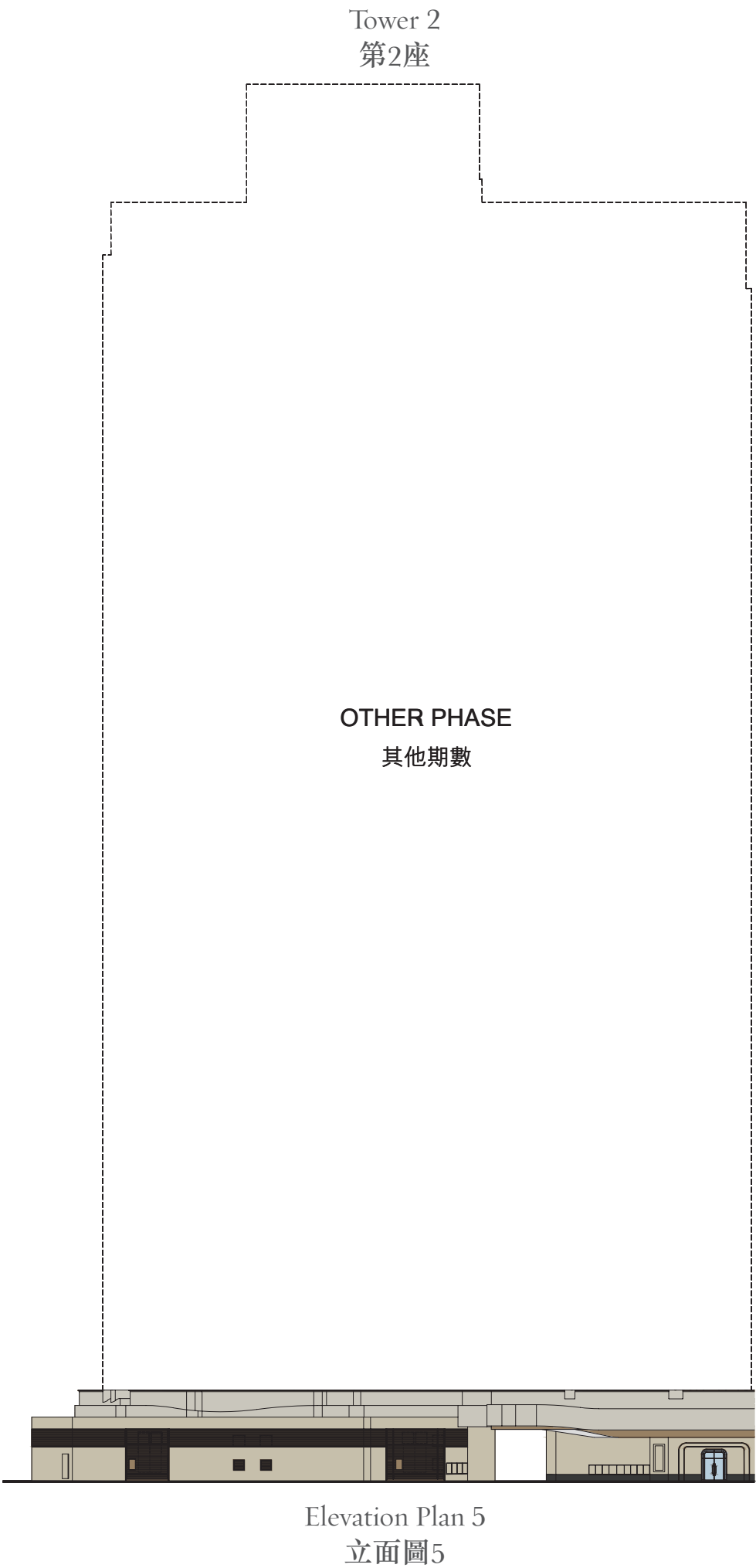
The Authorized Person for the Phase has certified that the elevations shown on these plans:

- are prepared on the basis of the approved building plans for the Phase as of 13 May 2025; and
- are in general accordance with the outward appearance of the Phase.

期數的認可人士已證明此等圖所顯示的立面：

- 以2025年5月13日的情況為準的期數的經批准的建築圖則為基礎擬備；及
- 大致上與此期數的外觀一致。

Elevation plan
立面圖



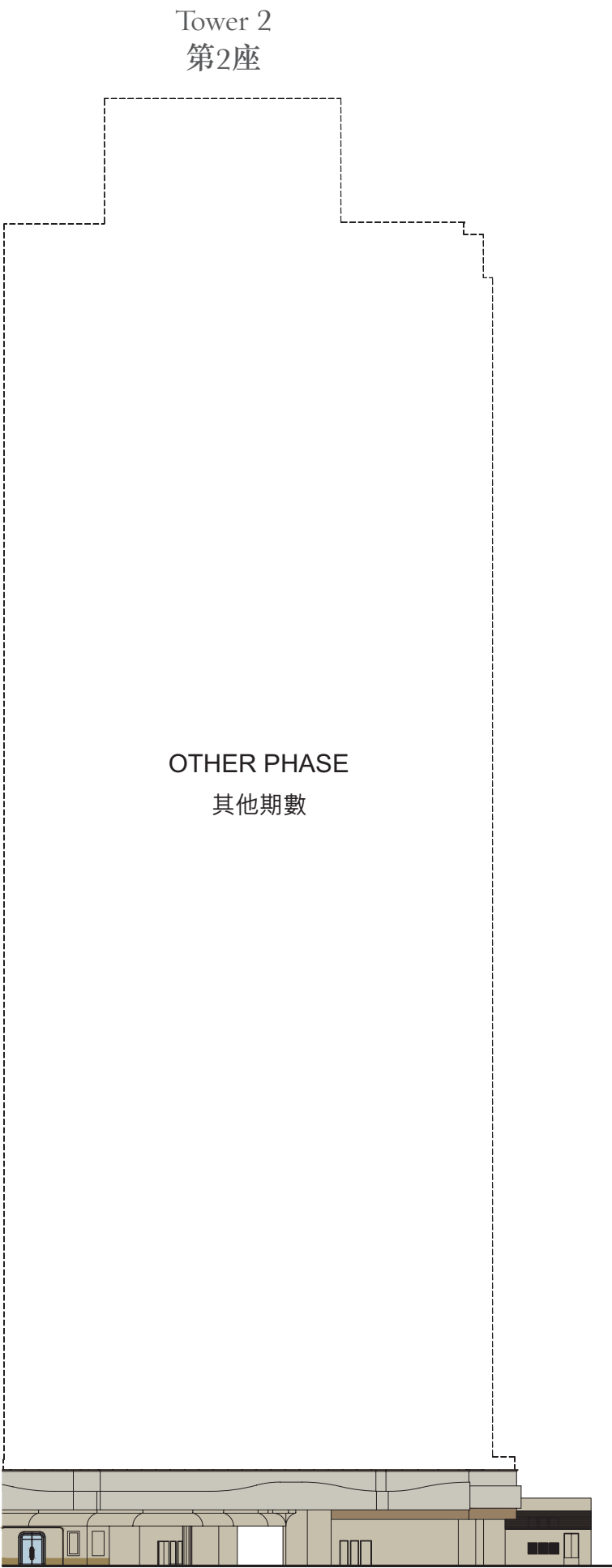
The Authorized Person for the Phase has certified that the elevations shown on these plans:

1. are prepared on the basis of the approved building plans for the Phase as of 13 May 2025; and
2. are in general accordance with the outward appearance of the Phase.

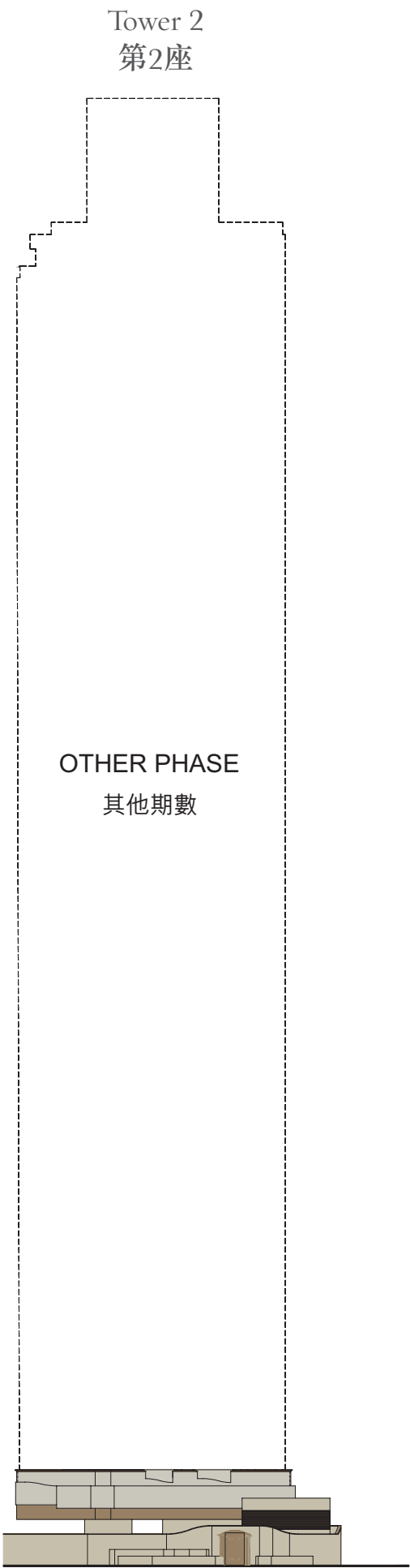
期數的認可人士已證明此等圖所顯示的立面：

1. 以2025年5月13日的情況為準的期數的經批准的建築圖則為基礎擬備；及
2. 大致上與此期數的外觀一致。

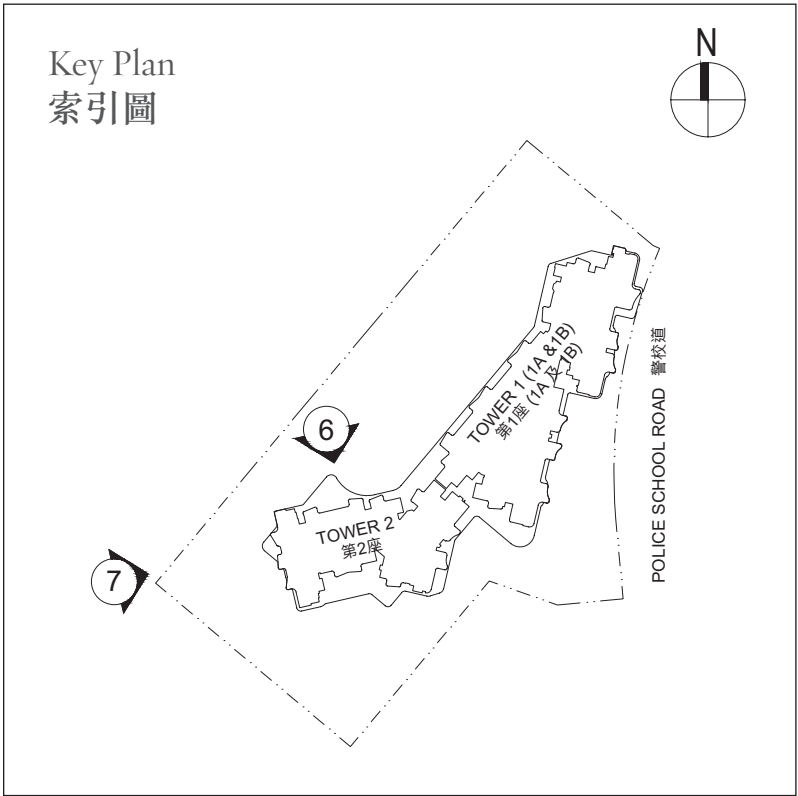
Elevation plan
立面圖



Elevation Plan 6
立面圖6



Elevation Plan 7
立面圖7



The Authorized Person for the Phase has certified that the elevations shown on these plans:

1. are prepared on the basis of the approved building plans for the Phase as of 13 May 2025; and
2. are in general accordance with the outward appearance of the Phase.

期數的認可人士已證明此等圖所顯示的立面：

1. 以2025年5月13日的情況為準的期數的經批准的建築圖則為基礎擬備；及
2. 大致上與此期數的外觀一致。