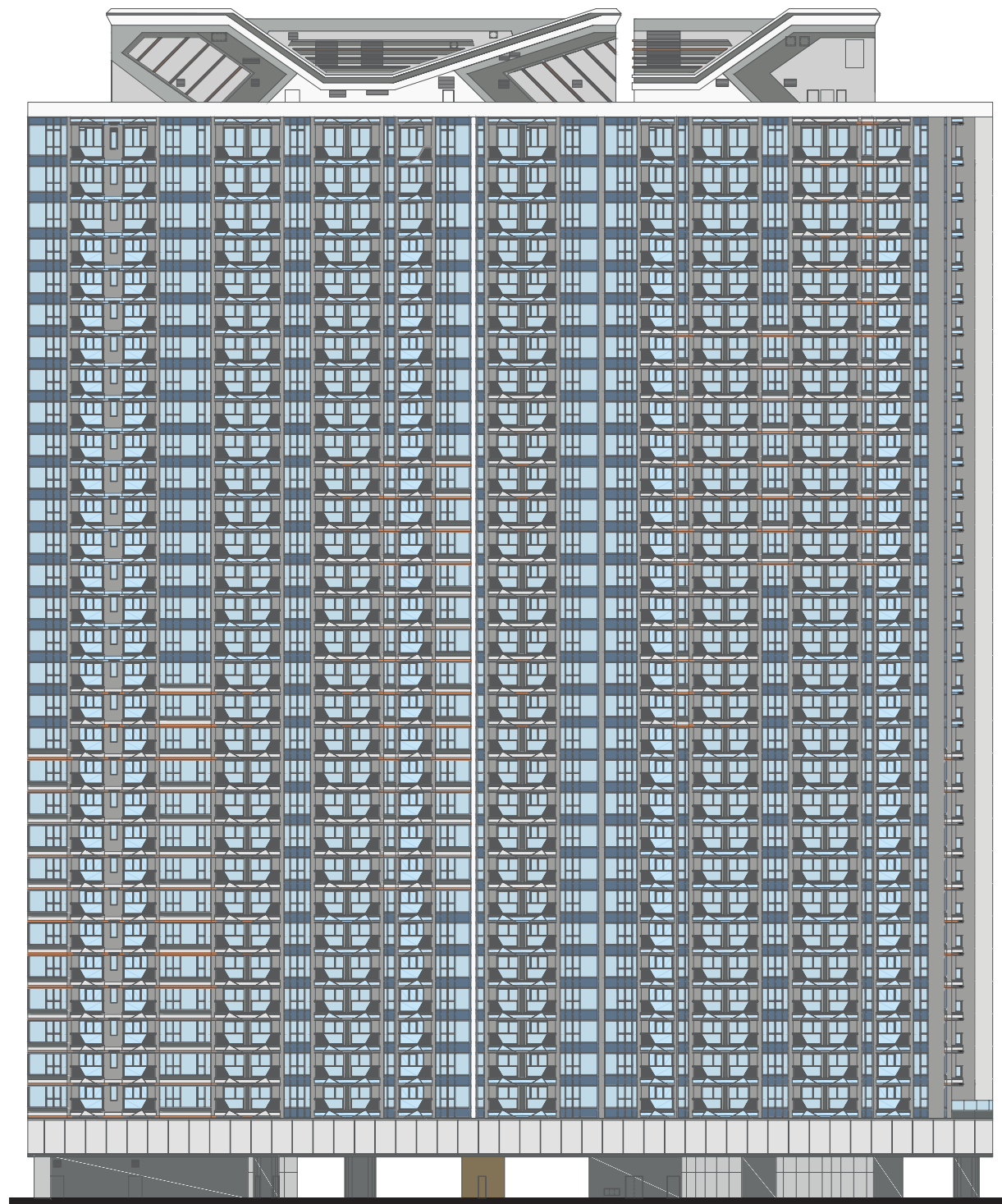
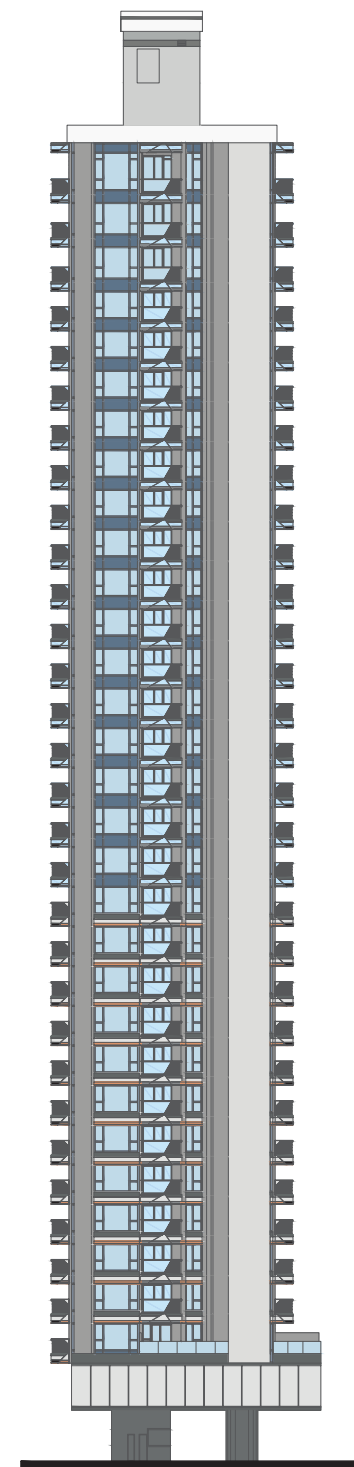


20 ELEVATION PLAN 立面圖

Tower 2 (Tower 2A, Tower 2B, Tower 2C)
第2座(第2A座、第2B座、第2C座)

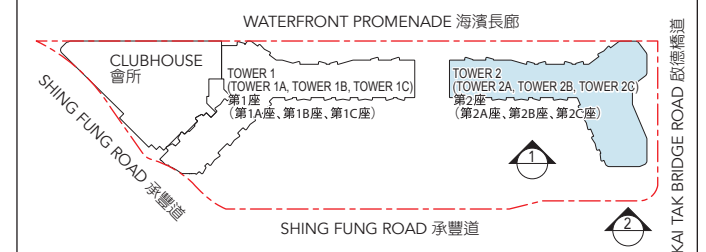


Elevation Plan 1 - Tower 2 (Tower 2A, Tower 2B, Tower 2C)
立面圖1 - 第2座(第2A座、第2B座、第2C座)



Elevation Plan 2 - Tower 2 (Tower 2C)
立面圖2 - 第2座(第2C座)

Key Plan 索引圖



Authorized person for the Phase has certified that the elevations shown on these plans:

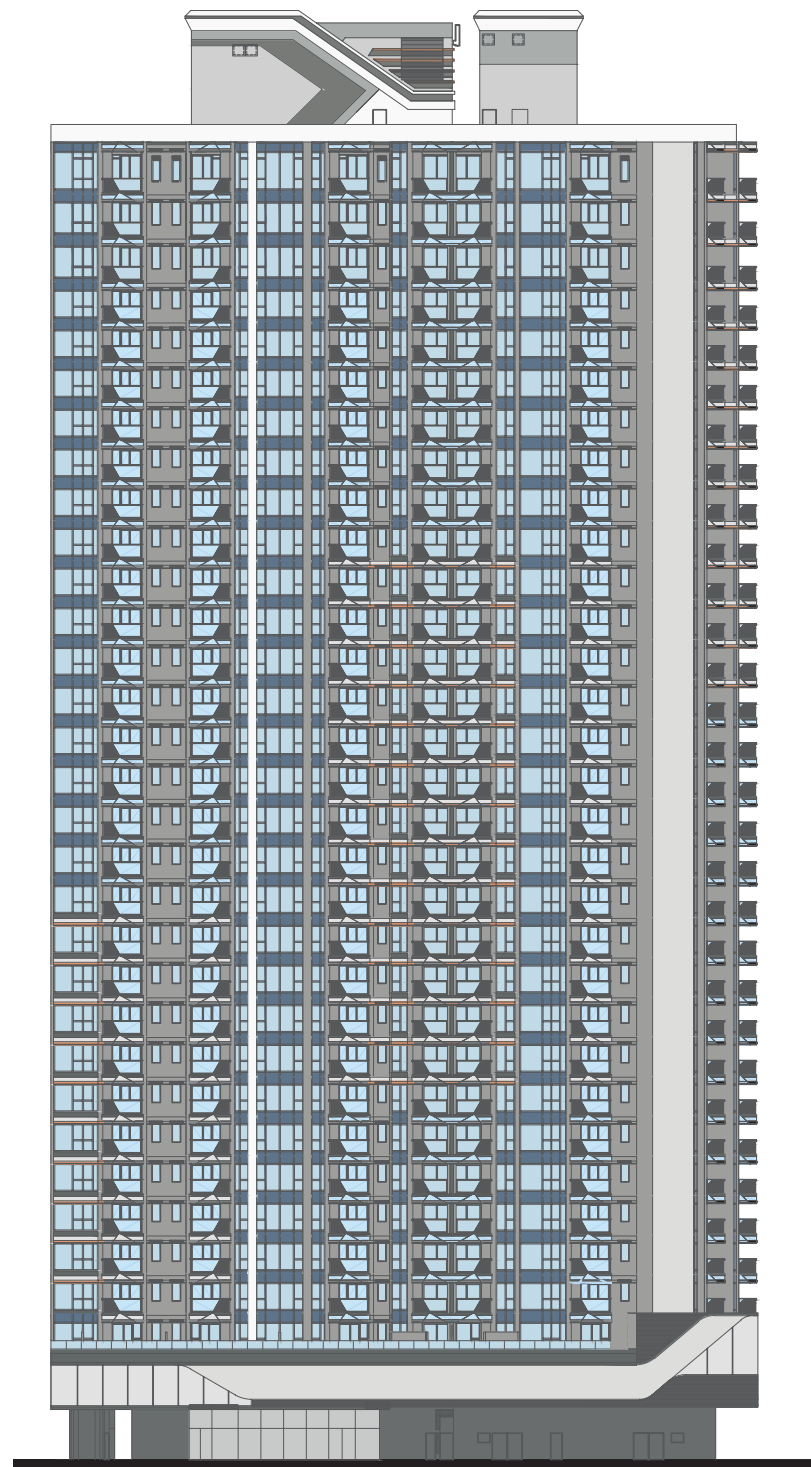
- (1) are prepared on the basis of the approved building plans for the Phase as of 9th September 2022 as amended by subsequent amendments approved on 16th May 2023 and 8th January 2024; and
- (2) are in general accordance with the outward appearance of the Phase.

期數的認可人士證明本立面圖所顯示的立面：

- (1) 以2022年9月9日的情況為準的期數的經批准的建築圖則及其後於2023年5月16日及2024年1月8日批准之改動的情況為基礎擬備；及
- (2) 大致上與期數的外觀一致。



Tower 2 (Tower 2A, Tower 2B, Tower 2C)
第2座(第2A座、第2B座、第2C座)



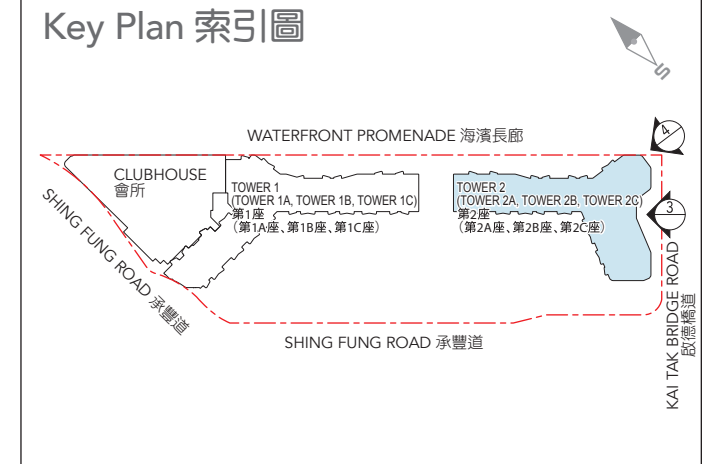
Elevation Plan 3 - Tower 2 (Tower 2B, Tower 2C)
立面圖3 - 第2座(第2B座、第2C座)



Elevation Plan 4 - Tower 2 (Tower 2B)
立面圖4 - 第2座(第2B座)

ELEVATION PLAN 20 立面圖

Key Plan 索引圖



Authorized person for the Phase has certified that the elevations shown on these plans:

- (1) are prepared on the basis of the approved building plans for the Phase as of 9th September 2022 as amended by subsequent amendments approved on 16th May 2023 and 8th January 2024; and
- (2) are in general accordance with the outward appearance of the Phase.

期數的認可人士證明本立面圖所顯示的立面：

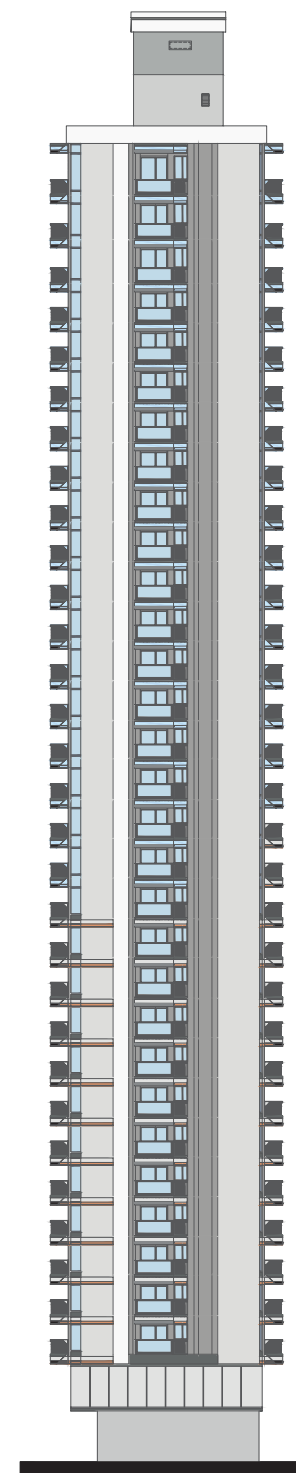
- (1) 以2022年9月9日的情況為準的期數的經批准的建築圖則及其後於2023年5月16日及2024年1月8日批准之改動的情況為基礎擬備；及
- (2) 大致上與期數的外觀一致。

20 ELEVATION PLAN 立面圖

Tower 2 (Tower 2A, Tower 2B, Tower 2C)
第2座(第2A座、第2B座、第2C座)



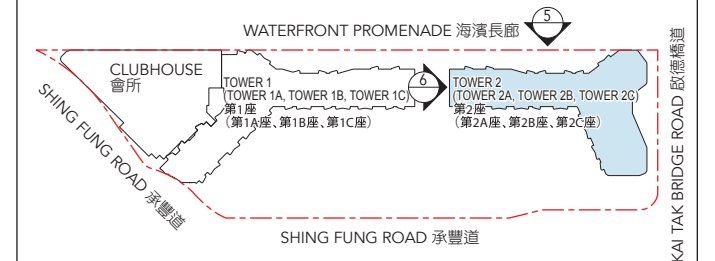
Elevation Plan 5 - Tower 2 (Tower 2A, Tower 2B)
立面圖5 - 第2座(第2A座、第2B座)



Elevation Plan 6 - Tower 2 (Tower 2A)
立面圖6 - 第2座(第2A座)



Key Plan 索引圖



Authorized person for the Phase has certified that the elevations shown on these plans:

- (1) are prepared on the basis of the approved building plans for the Phase as of 9th September 2022 as amended by subsequent amendments approved on 16th May 2023 and 8th January 2024; and
- (2) are in general accordance with the outward appearance of the Phase.

期數的認可人士證明本立面圖所顯示的立面：

- (1) 以2022年9月9日的情況為準的期數的經批准的建築圖則及其後於2023年5月16日及2024年1月8日批准之改動的情況為基礎擬備；及
- (2) 大致上與期數的外觀一致。