


# FLOOR PLANS OF RESIDENTIAL PROPERTIES IN THE DEVELOPMENT

## 發展項目的住宅物業的樓面平面圖

### Legend of Terms and Abbreviations used on Floor Plans:

樓面平面圖中所使用名詞及簡稱之圖例：

A/C	= 空調機平台 Air-Conditioning Platform
A/C Plinth	= 空調機機台 Air-Conditioning Plinth
Archi. Feature	= 建築裝飾 Architectural Feature
Architectural Feature at 17/F-18/F, 20/F, 22/F and 25/F L/L	= 建築裝飾於17至18樓，20樓，22樓及25樓低位 Architectural Feature at 17/F-18/F, 20/F, 22/F and 25/F Low Level
Architectural Feature at 17/F, 19/F, 21/F and 23/F L/L	= 建築裝飾於17樓，19樓，21樓及23樓低位 Architectural Feature at 17/F, 19/F, 21/F and 23/F Low Level
Architectural Feature at L/L	= 建築裝飾於低位 Architectural Feature at Low Level
Archi. Feature For Ext. Pipework	= 供外露管道的建築裝飾 Architectural Feature for External Pipework
Bal. / U.P.	= 露台 / 工作平台 Balcony / Utility Platform
Bal./ U.P. Above	= 露台 / 工作平台置上 Balcony / Utility Platform above
Bath	= 浴室 Bathroom
B.R.	= 睡房 Bedroom
Common Flat Roof	= 公共平台
DN	= 下 Down
E.M.C.	= 電錶櫃 Electrical Meter Cabinet
H.R.	= 消防喉轆 Hose Reel
Glass Balustrade On RC Curb	= 玻璃欄河於鋼筋混凝土圍邊上 Glass Balustrade On Reinforced Concrete Curb
Lift	= 升降機
Lift Lobby	= 升降機大堂
Liv. / Din.	= 客廳 / 飯廳 Living Room / Dining Room
M.B.R.	= 主人睡房 Master Bedroom
Open Kit.	= 開放式廚房 Open Kitchen
Private Flat Roof for Unit A	= A單位私人平台
Private Flat Roof for Unit B	= B單位私人平台
Private Flat Roof for Unit C	= C單位私人平台
Private Flat Roof for Unit D	= D單位私人平台
Private Flat Roof for Unit E	= E單位私人平台
Private Flat Roof for 16/F Unit D	= 16樓D單位私人平台

Private Flat Roof for 26/F Unit A	= 26樓A單位私人平台
Private Flat Roof for 26/F Unit B	= 26樓B單位私人平台
Private Roof for 26/F Unit A	= 26樓A單位私人天台
Private Roof for 26/F Unit B	= 26樓B單位私人天台
P.D.	= 管槽 Pipe Duct
Potable & Flushing Water Pump Room	= 食水及沖廁水泵房
R.C. Cover	= 鋼筋混凝土蓋 Reinforced Concrete Cover
R.C. Doghouse	= 鋼筋混凝土管道檢修井 Reinforced Concrete Dog House
1100mmH Parapet Wall	= 1100毫米(高) 分隔牆 1100mm(Height) Parapet Wall
1800mmH Parapet Wall	= 1800毫米(高)分隔牆 1800mm (Height) Parapet Wall
UP	= 上 Up
W.M.C.	= 水錶櫃 Water Meter Cabinet
	= 隨樓附送之嵌入式裝置 Built-in fittings provided in the units

Notes applicable to the floor plans of this section:

1. Common pipes exposed or enclosed in cladding may be located at/adjacent to the balcony, utility platform, air conditioning platform, flat roof, roof or external wall of some residential properties.
2. There may be sunken slabs at some parts of the ceiling inside some residential properties for the installation of mechanical and electrical services of the floor above or due to the structural, architectural and/or decoration design requirements of the floor above.
3. There may be ceiling bulkheads or false ceiling inside some residential properties for the installation of air-conditioning conduits and/or other mechanical and electrical services.
4. The outdoor unit of air-conditioning for some residential properties are placed on the designated air-conditioning platforms or flat roof. Such outdoor unit of air-conditioning may create heat and/or noise.
5. Those icons of fittings and appliances shown on the floor plans of residential properties like wash basins, water closets, shower cubicles, sink units, cabinets (if any) etc. are prepared in accordance with the latest approved building plans. Their shapes, dimensions, scales may be differed from the fittings and appliances actually provided and they are for indication and reference only.
6. The dimensions of the floor plans are all structural dimensions in millimeter.

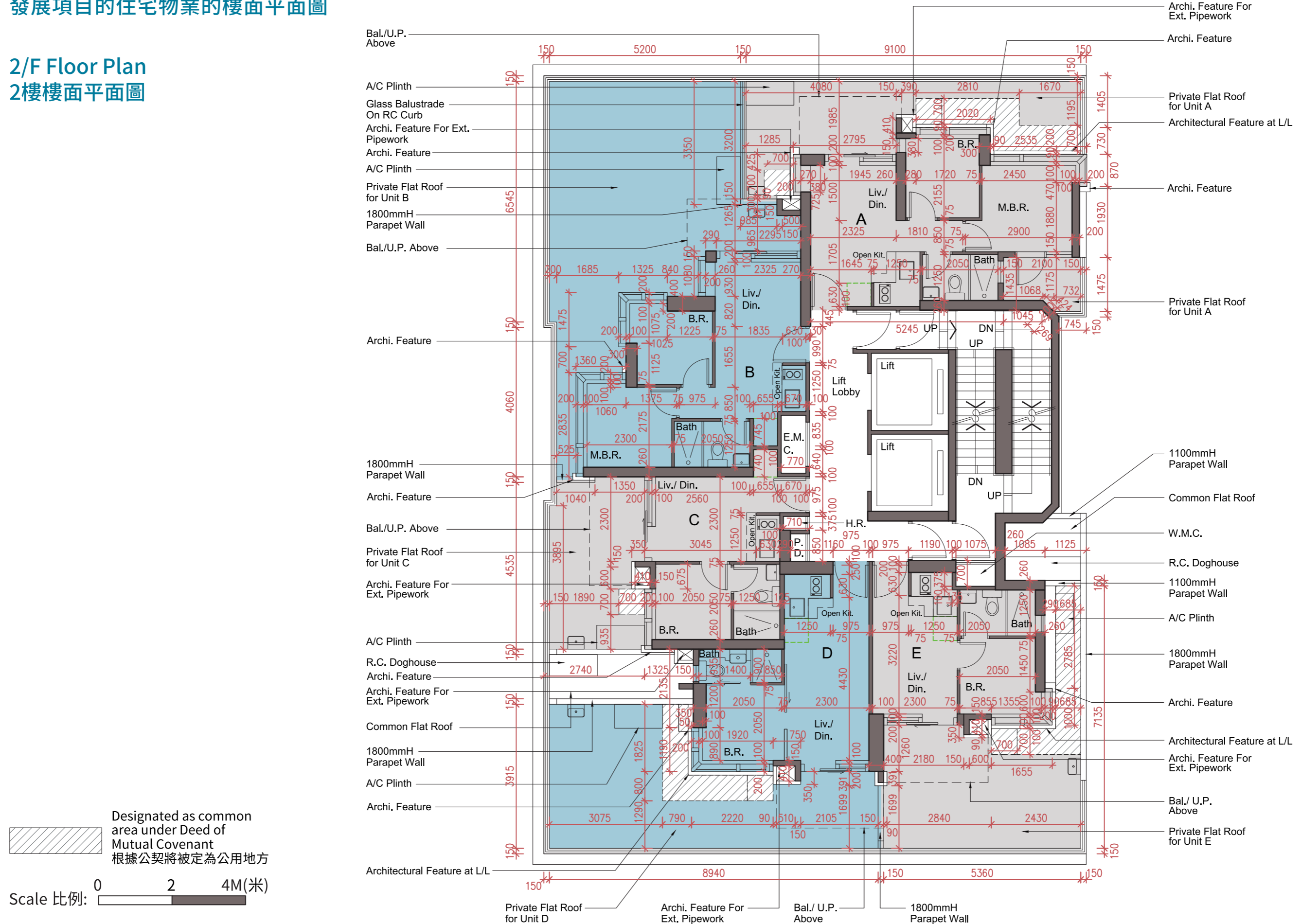
適用於本節各樓面平面圖之備註:

1. 部分住宅物業的露台、工作平台、空調機平台、平台、天台或外牆上/附近或設有外露之公用喉管，或外牆裝飾板內藏之公用喉管。
2. 部分住宅物業內之部分天花或有跌級樓板，用以安裝上層之機電設備或配合上層之結構、建築設計及/或裝修設計上的需要。
3. 部分住宅物業內或設有假陣或假天花用以安裝空調喉管及/或其他機電設備。
4. 部分住宅物業的空調機之室外機放置於指定的空調機平台或平台。該等空調機之室外機可能發出熱力及/或聲音。
5. 各住宅物業的樓面平面圖內所展示之裝置及設備的圖標如洗面盆、座廁、淋浴間、洗滌盆、櫃(如有)等乃根據最新經批准的建築圖則擬備，其形狀、尺寸、比例或與實際提供的裝置及設備存在差異，僅供示意及參考之用。
6. 樓面平面圖所列之數字為以毫米標示之建築結構尺寸。

# FLOOR PLANS OF RESIDENTIAL PROPERTIES IN THE DEVELOPMENT

## 發展項目的住宅物業的樓面平面圖

### 2/F Floor Plan 2樓樓面平面圖



Note : The dimensions of the floor plan are all structural dimensions in millimeter.  
備註 : 平面圖所列之數字為以毫米標示之建築結構尺寸。

## FLOOR PLANS OF RESIDENTIAL PROPERTIES IN THE DEVELOPMENT

### 發展項目的住宅物業的樓面平面圖

	Floor 樓層	Unit 單位				
		A	B	C	D	E
Thickness of the floor slabs (excluding plaster) of each residential property (mm) 每個住宅物業的樓板(不包括灰泥)的厚度 (毫米)	2/F 2樓	125, 150, 175	125, 150, 175	125, 150, 175	125, 150, 175	125, 150, 175
Floor-to-floor height of each residential property (mm) 每個住宅物業的層與層之間的高度 (毫米)		2875, 3325, 3525	2825, 2875, 3325, 3525	2875, 3325, 3525	2875, 3325, 3525	2975, 3325, 3525

Notes :

1. The internal areas of the residential properties on the upper floors will generally be slightly larger than those on the lower floors because of the reducing thickness of the structural walls on the upper floors.
2. Please refer to page 17 of this Sales Brochure for legend of the terms and abbreviations used on the floor plans and the explanatory notes that are applicable thereto.
3. 4/F, 13/F, 14/F and 24/F are omitted.

備註：

1. 因住宅物業的較高樓層的結構牆的厚度遞減，較高樓層的內部面積，一般比較低樓層的內部面積稍大。
2. 樓面平面圖中所使用名詞及簡稱之圖例及其適用的備註，請參閱本售樓說明書第17頁。
3. 不設4樓、13樓、14樓及24樓。

# FLOOR PLANS OF RESIDENTIAL PROPERTIES IN THE DEVELOPMENT

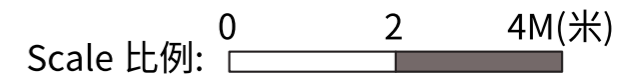
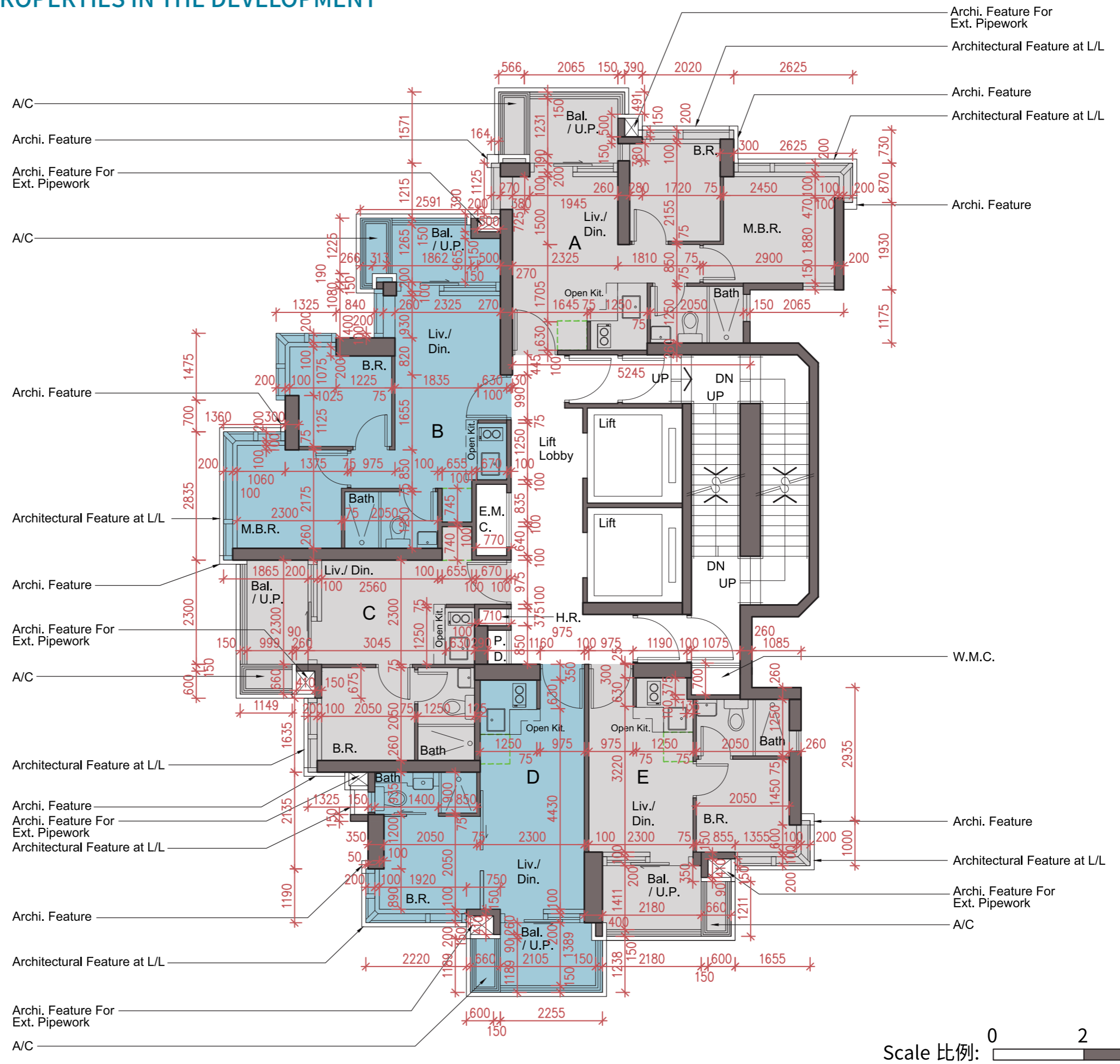
## 發展項目的住宅物業的樓面平面圖

3/F, 5/F-12/F & 15/F

Floor Plan

3樓、5樓至12樓及15樓

樓面平面圖



Note : The dimensions of the floor plan are all structural dimensions in millimeter.  
 備註 : 平面圖所列之數字為以毫米標示之建築結構尺寸。

## FLOOR PLANS OF RESIDENTIAL PROPERTIES IN THE DEVELOPMENT

### 發展項目的住宅物業的樓面平面圖

	Floor 樓層	Unit 單位				
		A	B	C	D	E
Thickness of the floor slabs (excluding plaster) of each residential property (mm) 每個住宅物業的樓板(不包括灰泥)的厚度 (毫米)	3/F & 5/F-12/F 3樓及5樓至12樓	125, 150, 175	125, 150, 175	125, 150, 175	125, 150, 175	125, 150, 175
Floor-to-floor height of each residential property (mm) 每個住宅物業的層與層之間的高度 (毫米)		2875, 3275, 3325	2825, 2875, 3275, 3325	2875, 3275, 3325	2875, 3275, 3325	2975, 3275, 3325
Thickness of the floor slabs (excluding plaster) of each residential property (mm) 每個住宅物業的樓板(不包括灰泥)的厚度 (毫米)	15/F 15樓	125, 150, 175	125, 150, 175	125, 150, 175	125, 150, 175	150, 175
Floor-to-floor height of each residential property (mm) 每個住宅物業的層與層之間的高度 (毫米)		2875, 3275, 3325	2825, 2875, 3275, 3325	2875, 3275, 3325	2875, 3275, 3325	2875, 3275, 3325, 3375

Notes :

1. The internal areas of the residential properties on the upper floors will generally be slightly larger than those on the lower floors because of the reducing thickness of the structural walls on the upper floors.
2. Please refer to page 17 of this Sales Brochure for legend of the terms and abbreviations used on the floor plans and the explanatory notes that are applicable thereto.
3. 4/F, 13/F, 14/F and 24/F are omitted.

備註：

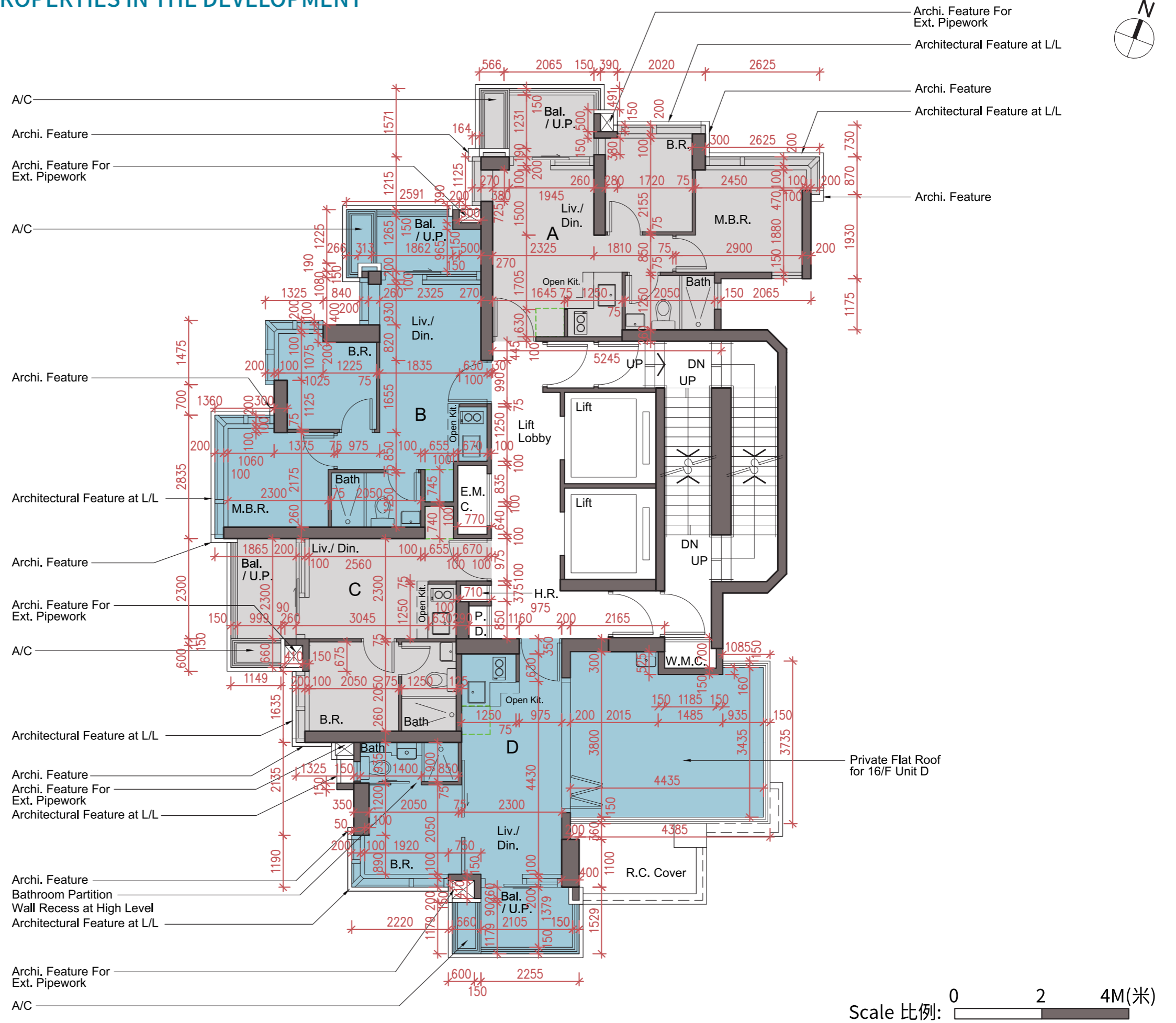
1. 因住宅物業的較高樓層的結構牆的厚度遞減，較高樓層的內部面積，一般比較低樓層的內部面積稍大。
2. 樓面平面圖中所使用名詞及簡稱之圖例及其適用的備註，請參閱本售樓說明書第17頁。
3. 不設4樓、13樓、14樓及24樓。

# FLOOR PLANS OF RESIDENTIAL PROPERTIES IN THE DEVELOPMENT

## 發展項目的住宅物業的樓面平面圖

### 16/F Floor Plan

### 16樓樓面平面圖



Note : The dimensions of the floor plan are all structural dimensions in millimeter.

備註 : 平面圖所列之數字為以毫米標示之建築結構尺寸。

## FLOOR PLANS OF RESIDENTIAL PROPERTIES IN THE DEVELOPMENT

### 發展項目的住宅物業的樓面平面圖

	Floor 樓層	Unit 單位			
		A	B	C	D
Thickness of the floor slabs (excluding plaster) of each residential property (mm) 每個住宅物業的樓板(不包括灰泥)的厚度 (毫米)	16/F 16樓	125, 150, 175	125, 150, 175	125, 150, 175	125, 150, 175
Floor-to-floor height of each residential property (mm) 每個住宅物業的層與層之間的高度 (毫米)		2875, 3275, 3325	2825, 2875, 3275, 3325	2875, 3275, 3325	2875, 3275, 3325

Notes :

1. The internal areas of the residential properties on the upper floors will generally be slightly larger than those on the lower floors because of the reducing thickness of the structural walls on the upper floors.
2. Please refer to page 17 of this Sales Brochure for legend of the terms and abbreviations used on the floor plans and the explanatory notes that are applicable thereto.
3. 4/F, 13/F, 14/F and 24/F are omitted.

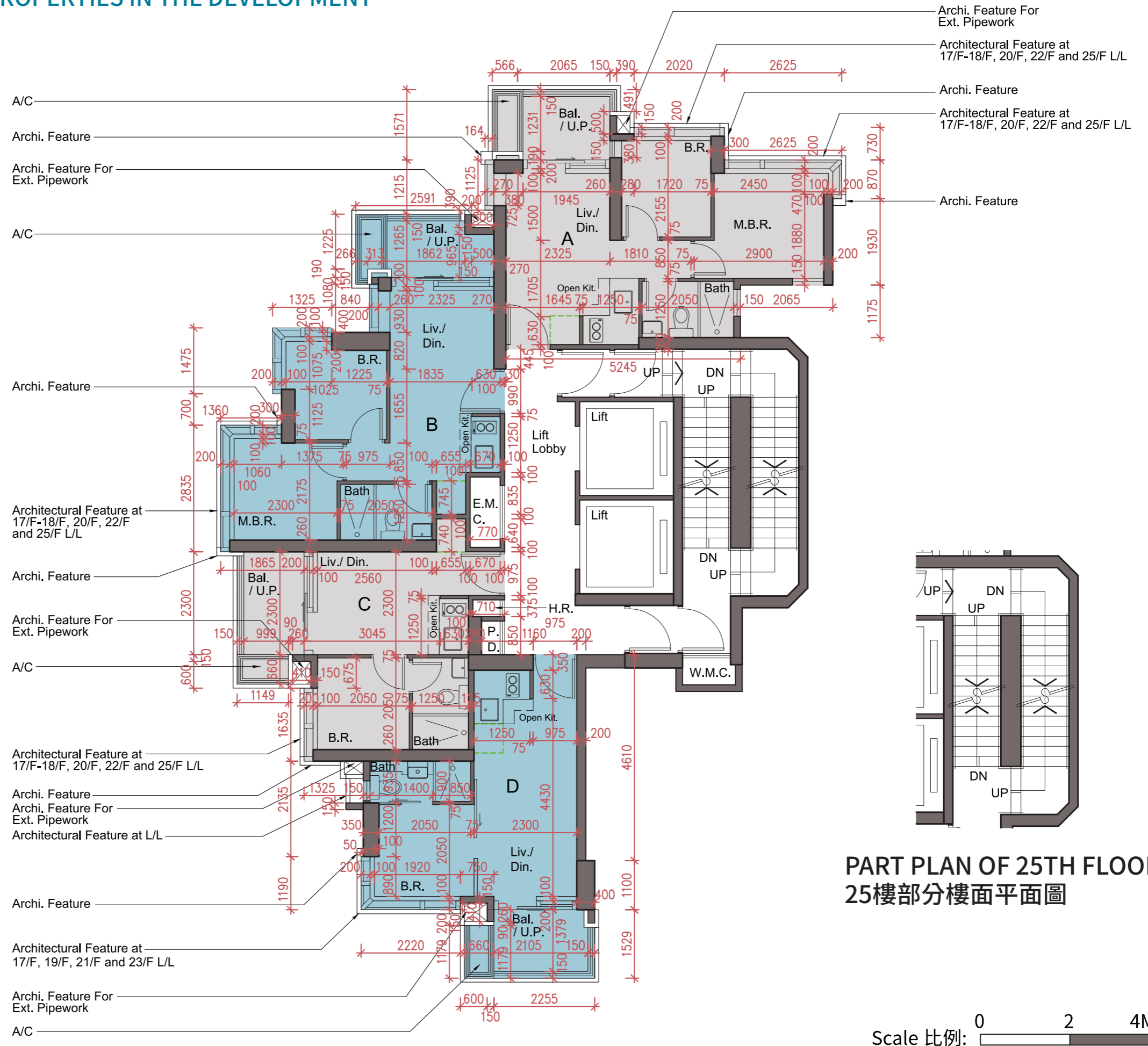
備註：

1. 因住宅物業的較高樓層的結構牆的厚度遞減，較高樓層的內部面積，一般比較低樓層的內部面積稍大。
2. 樓面平面圖中所使用名詞及簡稱之圖例及其適用的備註，請參閱本售樓說明書第17頁。
3. 不設4樓、13樓、14樓及24樓。

# FLOOR PLANS OF RESIDENTIAL PROPERTIES IN THE DEVELOPMENT

## 發展項目的住宅物業的樓面平面圖

### 17/F-23/F & 25/F Floor Plan 17樓至23樓及25樓樓面平面圖



Note : The dimensions of the floor plan are all structural dimensions in millimeter.  
備註 : 平面圖所列之數字為以毫米標示之建築結構尺寸。



## FLOOR PLANS OF RESIDENTIAL PROPERTIES IN THE DEVELOPMENT

### 發展項目的住宅物業的樓面平面圖

	Floor 樓層	Unit 單位			
		A	B	C	D
Thickness of the floor slabs (excluding plaster) of each residential property (mm) 每個住宅物業的樓板(不包括灰泥)的厚度 (毫米)	17/F-23/F 17樓至23樓	125, 150, 175	125, 150, 175	125, 150, 175	125, 150, 175
Floor-to-floor height of each residential property (mm) 每個住宅物業的層與層之間的高度 (毫米)		2875, 3275, 3325	2825, 2875, 3275, 3325	2875, 3275, 3325	2875, 3275, 3325
Thickness of the floor slabs (excluding plaster) of each residential property (mm) 每個住宅物業的樓板(不包括灰泥)的厚度 (毫米)	25/F 25樓	125, 150, 175	125, 150, 175	150, 175	150, 175
Floor-to-floor height of each residential property (mm) 每個住宅物業的層與層之間的高度 (毫米)		3050, 3450, 3500	3050, 3450, 3500, 3550	3250, 3450, 3500, 3550	3450, 3500, 3550

Notes :

1. The internal areas of the residential properties on the upper floors will generally be slightly larger than those on the lower floors because of the reducing thickness of the structural walls on the upper floors.
2. Please refer to page 17 of this Sales Brochure for legend of the terms and abbreviations used on the floor plans and the explanatory notes that are applicable thereto.
3. 4/F, 13/F, 14/F and 24/F are omitted.

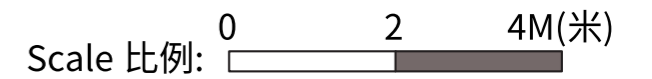
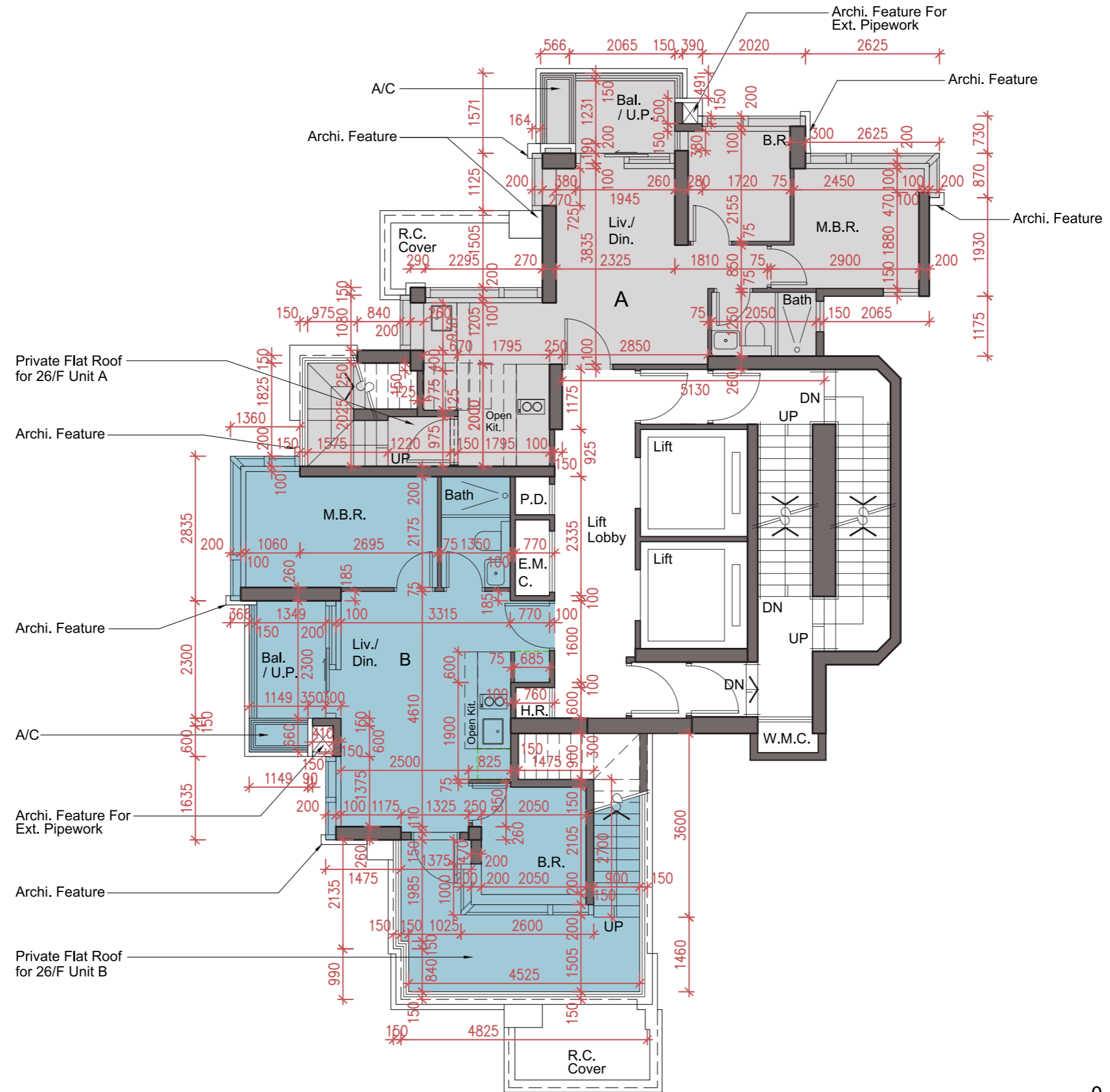
備註：

1. 因住宅物業的較高樓層的結構牆的厚度遞減，較高樓層的內部面積，一般比較低樓層的內部面積稍大。
2. 樓面平面圖中所使用名詞及簡稱之圖例及其適用的備註，請參閱本售樓說明書第17頁。
3. 不設4樓、13樓、14樓及24樓。



26/F Floor Plan

26樓樓面平面圖



Note : The dimensions of the floor plan are all structural dimensions in millimeter.  
 備註 : 平面圖所列之數字為以毫米標示之建築結構尺寸。

## FLOOR PLANS OF RESIDENTIAL PROPERTIES IN THE DEVELOPMENT

### 發展項目的住宅物業的樓面平面圖

	Floor 樓層	Unit 單位	
		A	B
Thickness of the floor slabs (excluding plaster) of each residential property (mm) 每個住宅物業的樓板(不包括灰泥)的厚度 (毫米)	26/F 26樓	150, 175	150, 175, 300
Floor-to-floor height of each residential property (mm) 每個住宅物業的層與層之間的高度 (毫米)		3450, 3500, 3550	3450, 3500, 3550

#### Notes :

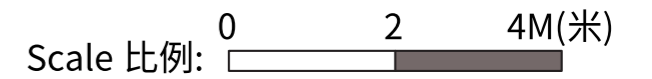
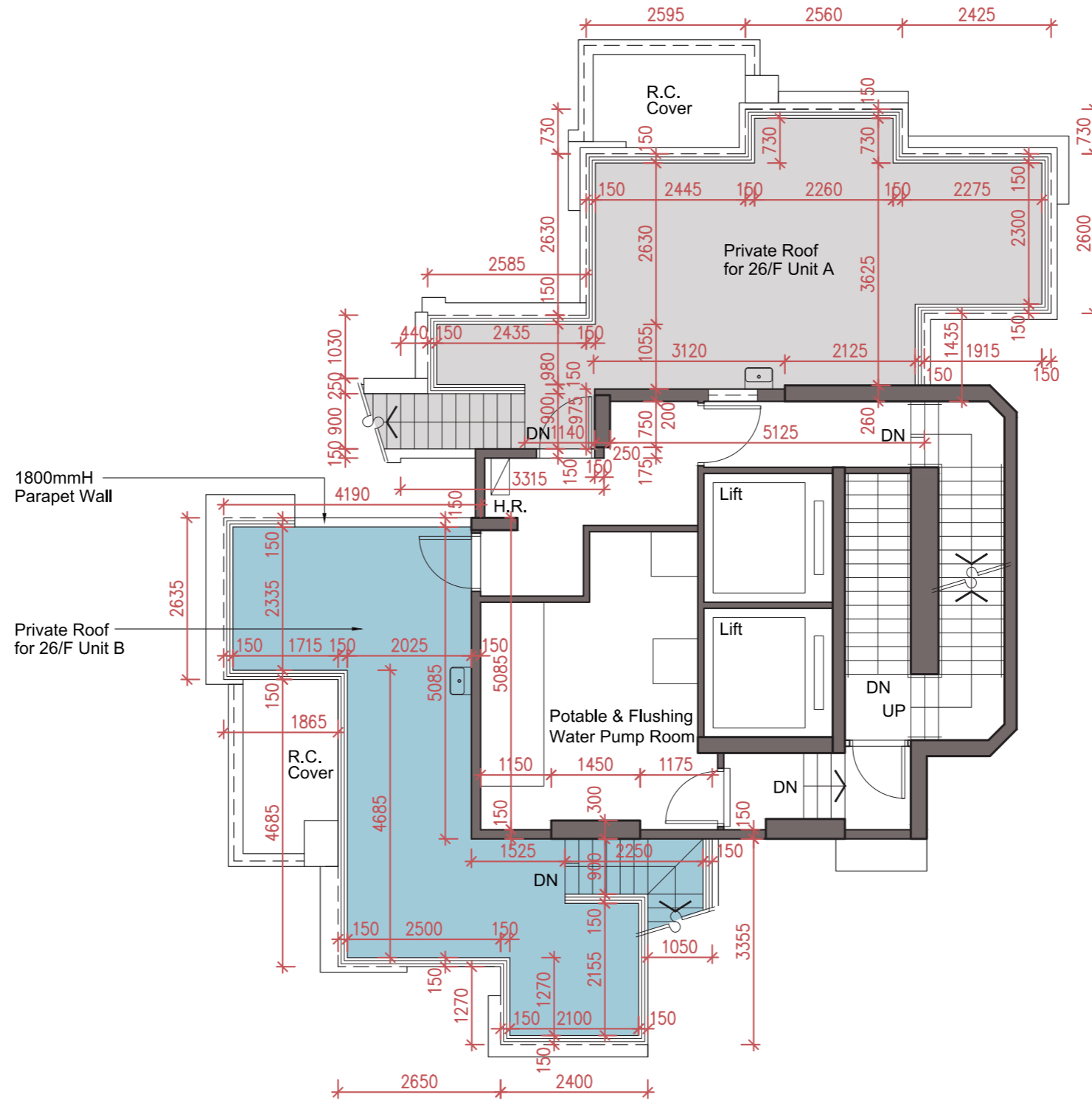
1. The internal areas of the residential properties on the upper floors will generally be slightly larger than those on the lower floors because of the reducing thickness of the structural walls on the upper floors.
2. Please refer to page 17 of this Sales Brochure for legend of the terms and abbreviations used on the floor plans and the explanatory notes that are applicable thereto.
3. 4/F, 13/F, 14/F and 24/F are omitted.

#### 備註：

1. 因住宅物業的較高樓層的結構牆的厚度遞減，較高樓層的內部面積，一般比較低樓層的內部面積稍大。
2. 樓面平面圖中所使用名詞及簡稱之圖例及其適用的備註，請參閱本售樓說明書第17頁。
3. 不設4樓、13樓、14樓及24樓。



Roof Floor Plan  
 天台樓面平面圖



Note : The dimensions of the floor plan are all structural dimensions in millimeter.  
 備註 : 平面圖所列之數字為以毫米標示之建築結構尺寸。

## FLOOR PLANS OF RESIDENTIAL PROPERTIES IN THE DEVELOPMENT

### 發展項目的住宅物業的樓面平面圖

	Floor 樓層	Unit 單位	
		A	B
Thickness of the floor slabs (excluding plaster) of each residential property (mm) 每個住宅物業的樓板(不包括灰泥)的厚度 (毫米)	Roof 天台	Not Applicable 不適用	
Floor-to-floor height of each residential property (mm) 每個住宅物業的層與層之間的高度 (毫米)		Not Applicable 不適用	

Notes :

1. The internal areas of the residential properties on the upper floors will generally be slightly larger than those on the lower floors because of the reducing thickness of the structural walls on the upper floors.
2. Please refer to page 17 of this Sales Brochure for legend of the terms and abbreviations used on the floor plans and the explanatory notes that are applicable thereto.

備註：

1. 因住宅物業的較高樓層的結構牆的厚度遞減，較高樓層的內部面積，一般比較低樓層的內部面積稍大。
2. 樓面平面圖中所使用名詞及簡稱之圖例及其適用的備註，請參閱本售樓說明書第17頁。