

11 FLOOR PLANS OF RESIDENTIAL PROPERTIES IN THE DEVELOPMENT

發展項目的住宅物業的樓面平面圖

Legend of terms and abbreviations for Floor Plan 樓面平面圖中所使用名詞及簡稱之圖例

A/C PLATFORM	=	AIR-CONDITIONING PLATFORM 空調機平台
A/C PLANT ROOM	=	AIR-CONDITIONING PLANT ROOM 空調機房
C.L.	=	CAT LADDER 豎梯
DN	=	DOWN 落
F.S.I COVER	=	FIRE SERVICE INLET COVER 消防入水掣頂蓋
RSMRR	=	REFUSE STORAGE AND MATERIAL RECOVERY ROOM 垃圾及回收物料房
	=	AIR-CONDITIONING UNIT 空調機

Notes:

1. There are architectural features, metal grilles and/or exposed pipes on the external walls of some of the floors. For details, please refer to the latest approved building plans and/or approved drainage plans and/or other relevant plans.
2. Common pipes exposed and/or enclosed in cladding are located at/adjacent to the balcony and/or utility platform and/or flat roof and/or air-conditioning plant room and/or external wall of some residential units. For details, please refer to the latest approved building plans and/or approved drainage plans and/or other relevant plans.
3. There are sunken slabs for mechanical and electrical services and/or false ceiling/bulkheads for the air-conditioning fittings and/or mechanical and electrical services at some residential units.
4. There are exposed pipes installed in some bathrooms and lavatories.
5. Balconies and utility platforms are non-enclosed areas.
6. Symbols of fittings and fitments such as bath tub, sink, water closet, shower, sink counter, etc. on the floor plans are prepared based on the latest approved building plans and are for general indication only.
7. The internal ceiling height within some residential units may vary due to structural, architectural and/or decoration design variations.
8. There are non-structural prefabricated external walls and curtain walls in the residential units. The Saleable Area as defined in the Formal Agreement for Sale and Purchase of a residential unit has included the non-structural prefabricated external walls and curtain walls, and is measured from the exterior of such non-structural prefabricated external walls and curtain walls.

備註：

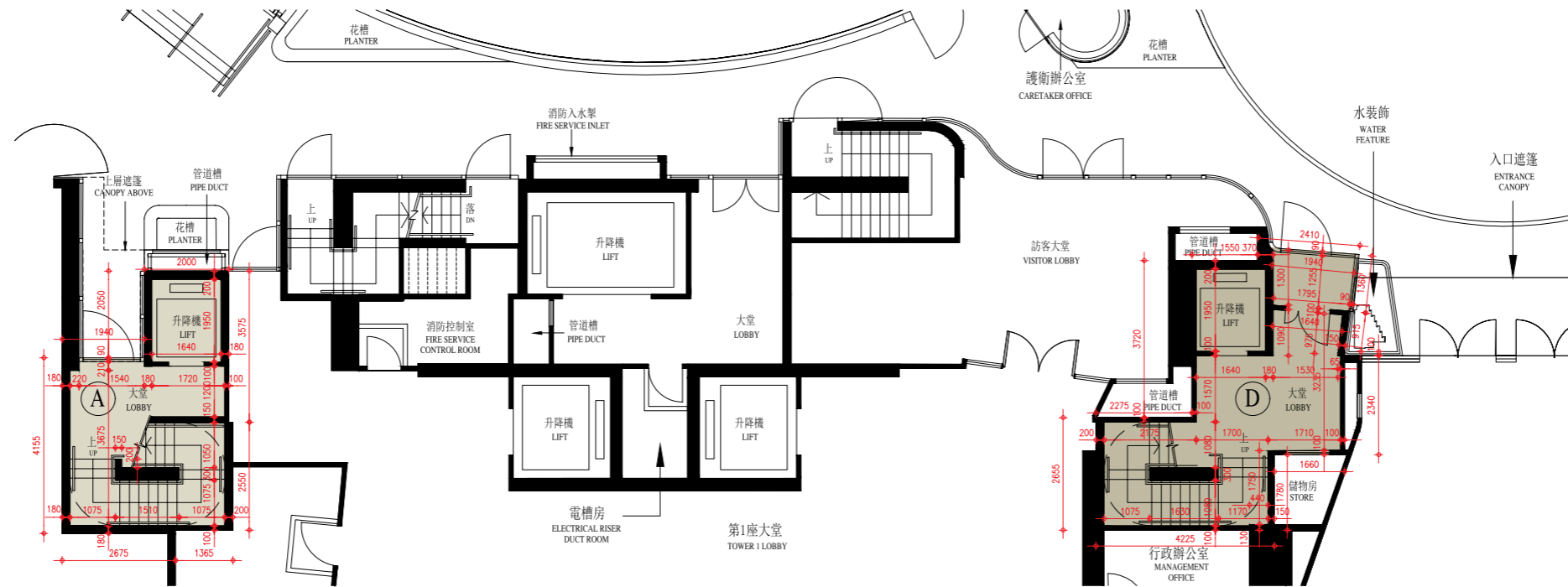
1. 部分樓層外牆範圍設有建築裝飾、金屬格柵及 / 或外露喉管，詳細資料請參考最新經批准的建築圖則及 / 或經批准的排水設施圖則及 / 或其他相關圖則。
2. 部分住宅單位的露台及 / 或工作平台及 / 或平台及 / 或空調機房及 / 或外牆上 / 附近設有外露及 / 或內藏於覆蓋板之公用喉管，詳細資料請參考最新經批准的建築圖則及 / 或經批准的排水設施圖則及 / 或其他相關圖則。
3. 部分住宅單位有用以安裝機電設備的跌級樓板及 / 或用以裝置空調裝備及 / 或其他機電設備的假天花 / 裝飾橫樑。
4. 部分浴室及廁所內裝有外露喉管。
5. 露台及工作平台為不可封閉的地方。
6. 樓面平面圖上所顯示的裝置符號，如浴缸、洗滌盆、坐廁、花灑、洗滌盆櫃等乃按最新的經批准的建築圖則繪製，只作一般示意用途。
7. 部份住宅單位之天花高度將會因應結構、建築及 / 或裝修設計上的需要而有差異。
8. 住宅單位有非結構預製外牆及幕牆。住宅單位之正式買賣合約內所定義之實用面積已包括非結構的預製外牆及幕牆，並由該非結構預製外牆及幕牆之外圍起計。

11 FLOOR PLANS OF RESIDENTIAL PROPERTIES IN THE DEVELOPMENT

發展項目的住宅物業的樓面平面圖

TOWER 1 G/F FLOOR PLAN

第1座 地下平面圖



SCALE BAR 比例尺

0 5 10M (米)



Description 描述	Flat 單位	
	A	D
The thickness of the floor slabs (excluding plaster) of each residential property (mm) 每個住宅物業的樓板 (不包括灰泥) 的厚度 (毫米)	1600 2000	2400 2800
The floor-to-floor height of each residential property (mm) 每個住宅物業的層與層之間的高度 (毫米)	6600 7000	6600 7000

The internal areas of the residential properties on the upper floors will generally be slightly larger than those on the lower floors because of reducing thickness of the structural walls on the upper floors.

因住宅物業的較高樓層的結構牆的厚度遞減，較高樓層的內部面積，一般比較低樓層的內部面積稍大。

Notes:

1. Floor-to-floor height refer to the height between the top surface of the structural slab of the floor and the top surface of the structural slab of its immediate upper floor.
2. The dimensions of floor plan are all structural dimensions in millimeter.
3. Please refer to page 19 of this sales brochure for notes and legend of the terms and abbreviations shown on floor plans.

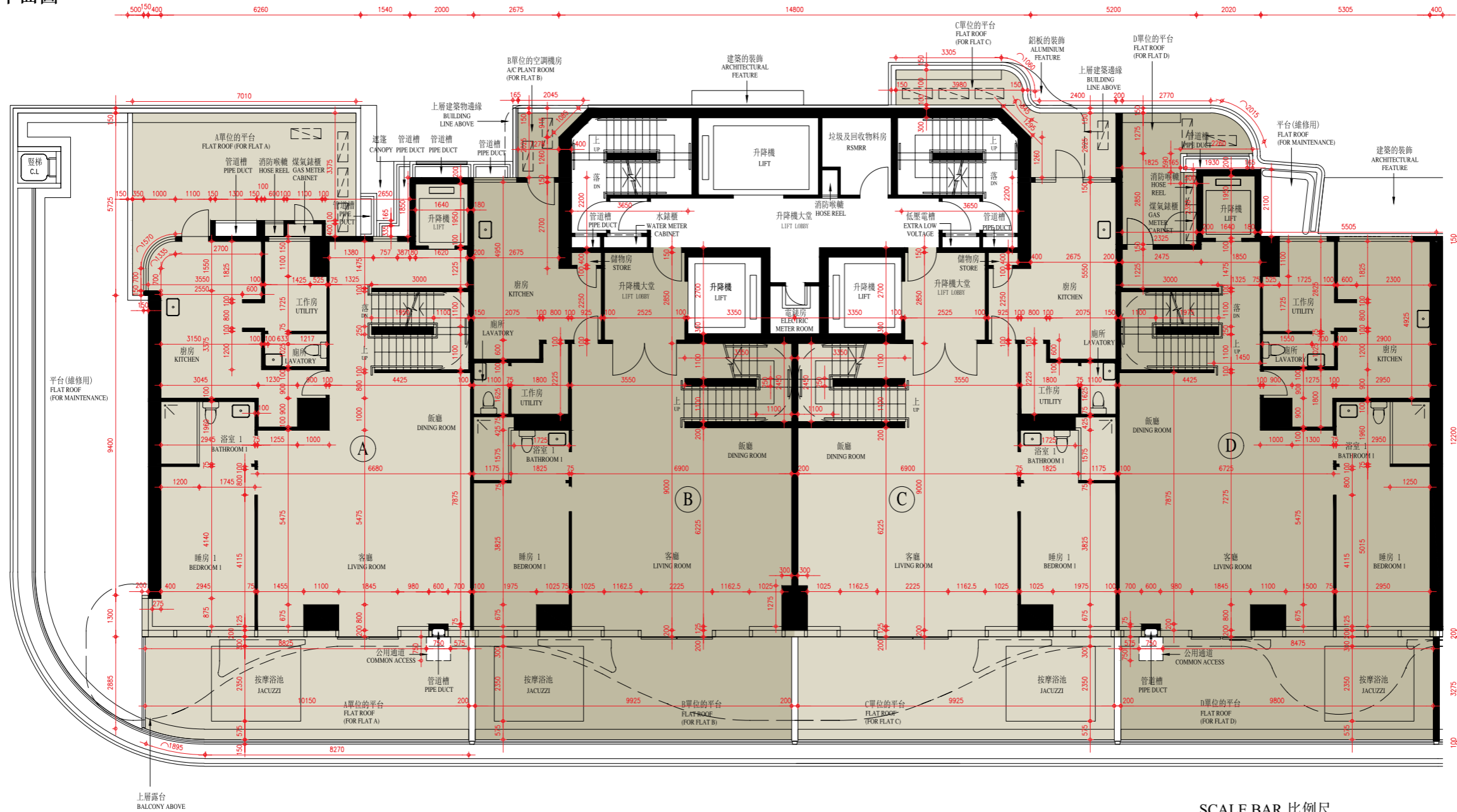
備註：

1. 層與層之間的高度指該樓層之石屎地台面之高度距離。
2. 樓面平面圖之尺規所列數字以毫米標示之建築結構尺寸。
3. 樓面平面圖中顯示之備註及名詞及簡稱之圖例，請參閱本售樓說明書第19頁。

11

FLOOR PLANS OF RESIDENTIAL PROPERTIES IN THE DEVELOPMENT 發展項目的住宅物業的樓面平面圖

TOWER 1 1/F FLOOR PLAN
第1座1樓平面圖



SCALE BAR 比例尺



Description 描述	Flat 單位			
	A	B	C	D
The thickness of the floor slabs (excluding plaster) of each residential property (mm) 每個住宅物業的樓板 (不包括灰泥) 的厚度 (毫米)	150 200			
The floor-to-floor height of each residential property (mm) 每個住宅物業的層與層之間的高度 (毫米)	2850	2850	2850	2850
	2900	2900	2900	2900
	3000	3000	3000	3000
	3050	3050	3050	3050
	3400	3400	3400	3400

The internal areas of the residential properties on the upper floors will generally be slightly larger than those on the lower floors because of reducing thickness of the structural walls on the upper floors.
因住宅物業的較高樓層的結構牆的厚度遞減，較高樓層的內部面積，一般比較低樓層的內部面積稍大。

Notes:

1. Floor-to-floor height refer to the height between the top surface of the structural slab of the floor and the top surface of the structural slab of its immediate upper floor.
2. The dimensions of floor plan are all structural dimensions in millimeter.
3. Please refer to page 19 of this sales brochure for notes and legend of the terms and abbreviations shown on floor plans.

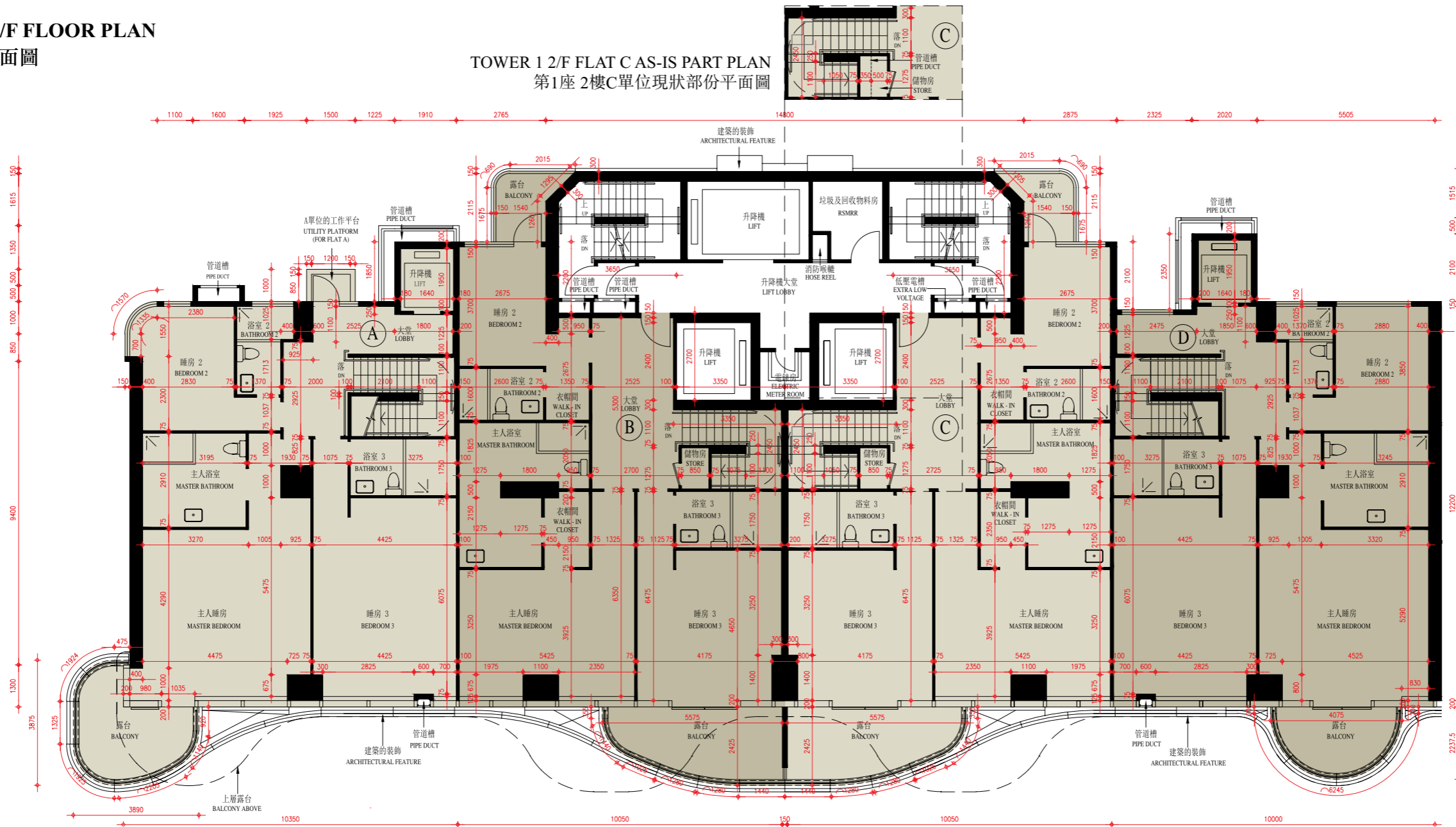
備註:

1. 層與層之間的高度指該樓層之石屎地台面之高度距離。
2. 樓面平面圖之尺規所列數字以毫米標示之建築結構尺寸。
3. 樓面平面圖中顯示之備註及名詞及簡稱之圖例，請參閱本售樓說明書第19頁。

11 FLOOR PLANS OF RESIDENTIAL PROPERTIES IN THE DEVELOPMENT

發展項目的住宅物業的樓面平面圖

TOWER 1 2/F FLOOR PLAN
第1座2樓平面圖



Description 描述	Flat 單位			
	A	B	C	D
The thickness of the floor slabs (excluding plaster) of each residential property (mm) 每個住宅物業的樓板 (不包括灰泥) 的厚度 (毫米)	150			
	175			
The floor-to-floor height of each residential property (mm) 每個住宅物業的層與層之間的高度 (毫米)	2900	3050	3050	2900
	3000	3150	3150	3000
	3050	3400	3400	3050
	3400			3400

The internal areas of the residential properties on the upper floors will generally be slightly larger than those on the lower floors because of reducing thickness of the structural walls on the upper floors.

因住宅物業的較高樓層的結構牆的厚度遞減，較高樓層的內部面積，一般比較低樓層的內部面積稍大。

Notes:

1. Floor-to-floor height refer to the height between the top surface of the structural slab of the floor and the top surface of the structural slab of its immediate upper floor.
2. The dimensions of floor plan are all structural dimensions in millimeter.
3. Please refer to page 19 of this sales brochure for notes and legend of the terms and abbreviations shown on floor plans.
4. Alteration(s) to Flat B and Flat C are made by way of minor works and/or exempted works under the Buildings Ordinance, please refer to the as-is part plan(s) for such alteration(s).

備註:

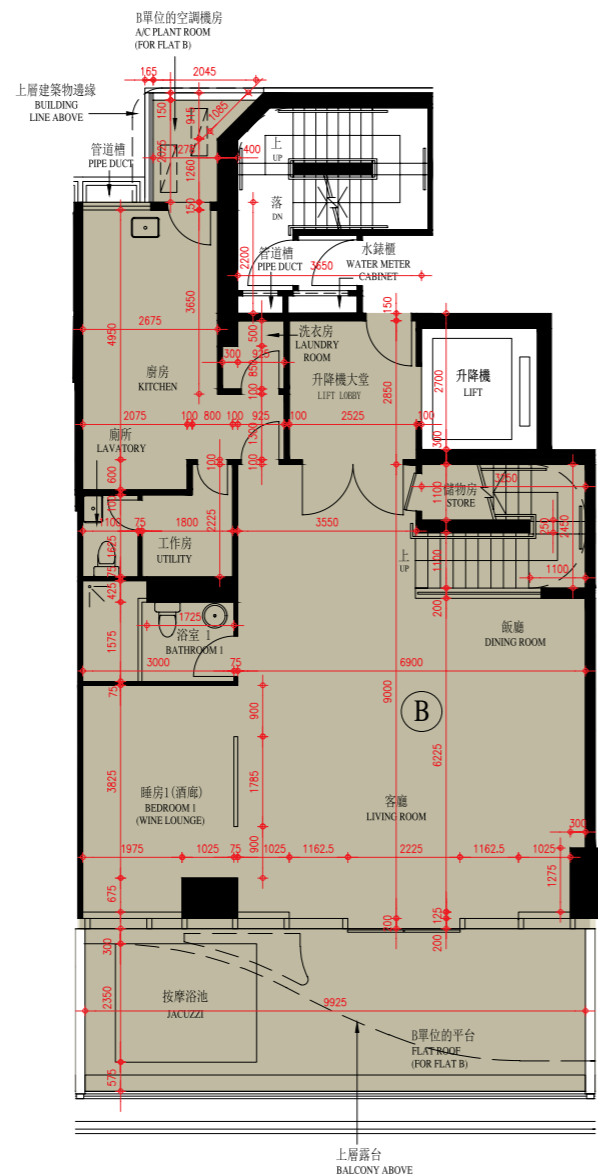
1. 層與層之間的高度指該樓層之石屎地台面之高度距離。
2. 樓面平面圖之尺規所列數字以毫米標示之建築結構尺寸。
3. 樓面平面圖中顯示之備註及名詞及簡稱之圖例，請參閱本售樓說明書第19頁。
4. 單位B及單位C已進行《建築物條例》下的小型工程及/或獲豁免入則的改動工程，有關改動請參閱現狀部份平面圖。

11 FLOOR PLANS OF RESIDENTIAL PROPERTIES IN THE DEVELOPMENT

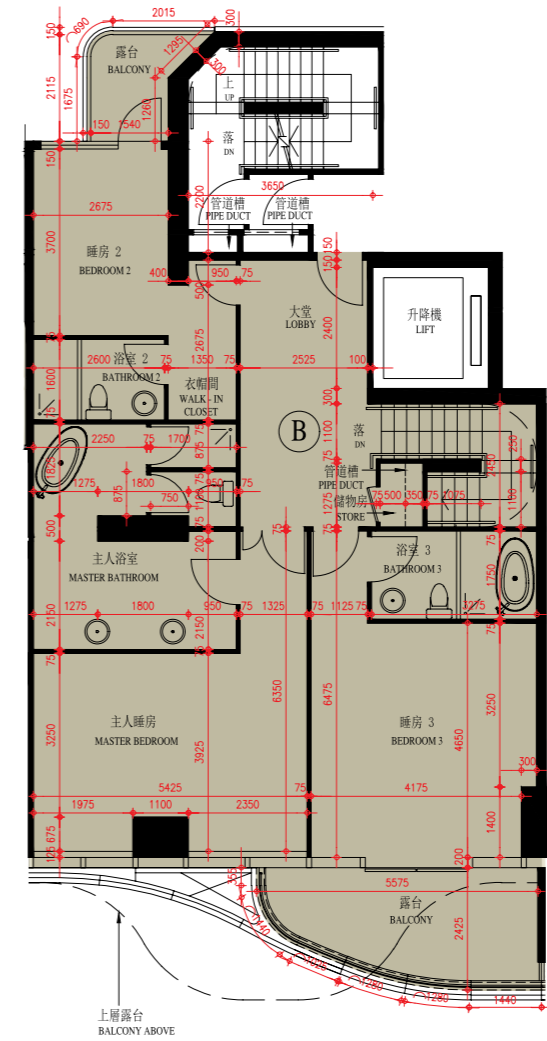
發展項目的住宅物業的樓面平面圖

TOWER 1 1/F AND 2/F FLAT B AS-IS PART PLAN

第1座 1樓及2樓B單位現狀部份平面圖



TOWER 1 1/F FLAT B AS-IS PART PLAN
第1座 1樓B單位現狀部份平面圖



TOWER 1 2/F FLAT B AS-IS PART PLAN
第1座 2樓B單位現狀部份平面圖

SCALE BAR 比例尺



Description 描述	Flat 單位
	B
The thickness of the floor slabs (excluding plaster) of each residential property (mm) 每個住宅物業的樓板 (不包括灰泥) 的厚度 (毫米)	150 175
The floor-to-floor height of each residential property (mm) 每個住宅物業的層與層之間的高度 (毫米)	2850
	2900
	3000
	3050
	3150 3400

The internal areas of the residential properties on the upper floors will generally be slightly larger than those on the lower floors because of reducing thickness of the structural walls on the upper floors.

因住宅物業的較高樓層的結構牆的厚度遞減，較高樓層的內部面積，一般比較低樓層的內部面積稍大。

Notes:

1. Floor-to-floor height refer to the height between the top surface of the structural slab of the floor and the top surface of the structural slab of its immediate upper floor.
2. The dimensions of floor plan are all structural dimensions in millimeter.
3. Please refer to page 19 of this sales brochure for notes and legend of the terms and abbreviations shown on floor plans.
4. Alteration(s) to Flat B is made by way of minor works and/ or exempted works under the Buildings Ordinance, please refer to the as-is part plan(s) for such alteration(s).
5. The original location of "BEDROOM 1" has been altered into a wine lounge. The relevant part has been indicated on the as-is part plan with "BEDROOM 1 (WINE LOUNGE)".

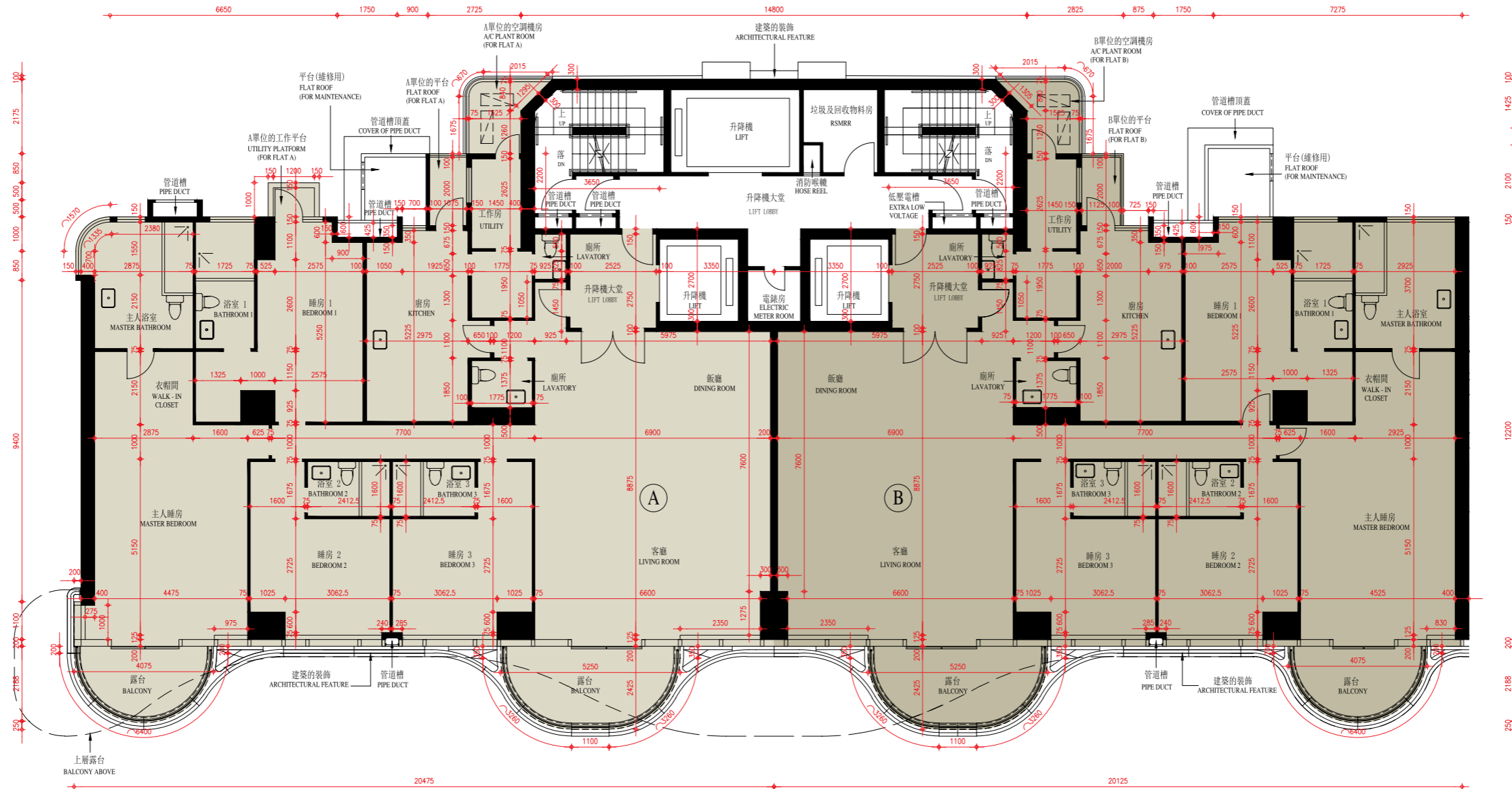
備註：

1. 層與層之間的高度指該樓層之石屎地台面之高度距離。
2. 樓面平面圖之尺規所列數字以毫米標示之建築結構尺寸。
3. 樓面平面圖中顯示之備註及名詞及簡稱之圖例，請參閱本售樓說明書第19頁。
4. 單位B已進行《建築物條例》下的小型工程及/或獲豁免入則的改動工程，有關改動請參閱現狀部份平面圖。
5. 「睡房1」之原本位置經改動後為酒廊，有關部份於現狀部份平面圖以「睡房1 (酒廊)」標示。

11 FLOOR PLANS OF RESIDENTIAL PROPERTIES IN THE DEVELOPMENT

發展項目的住宅物業的樓面平面圖

TOWER 1 3/F FLOOR PLAN 第1座3樓平面圖



Description 描述	Flat 單位	
	A	B
The thickness of the floor slabs (excluding plaster) of each residential property (mm) 每個住宅物業的樓板 (不包括灰泥) 的厚度 (毫米)	150 175 200	
The floor-to-floor height of each residential property (mm) 每個住宅物業的層與層之間的高度 (毫米)	2900 3000 3050 3400	2900 3000 3050 3400

The internal areas of the residential properties on the upper floors will generally be slightly larger than those on the lower floors because of reducing thickness of the structural walls on the upper floors.

因住宅物業的較高樓層的結構牆的厚度遞減，較高樓層的內部面積，一般比較低樓層的內部面積稍大。

Notes:

1. Floor-to-floor height refer to the height between the top surface of the structural slab of the floor and the top surface of the structural slab of its immediate upper floor.
2. The dimensions of floor plan are all structural dimensions in millimeter.
3. Please refer to page 19 of this sales brochure for notes and legend of the terms and abbreviations shown on floor plans.

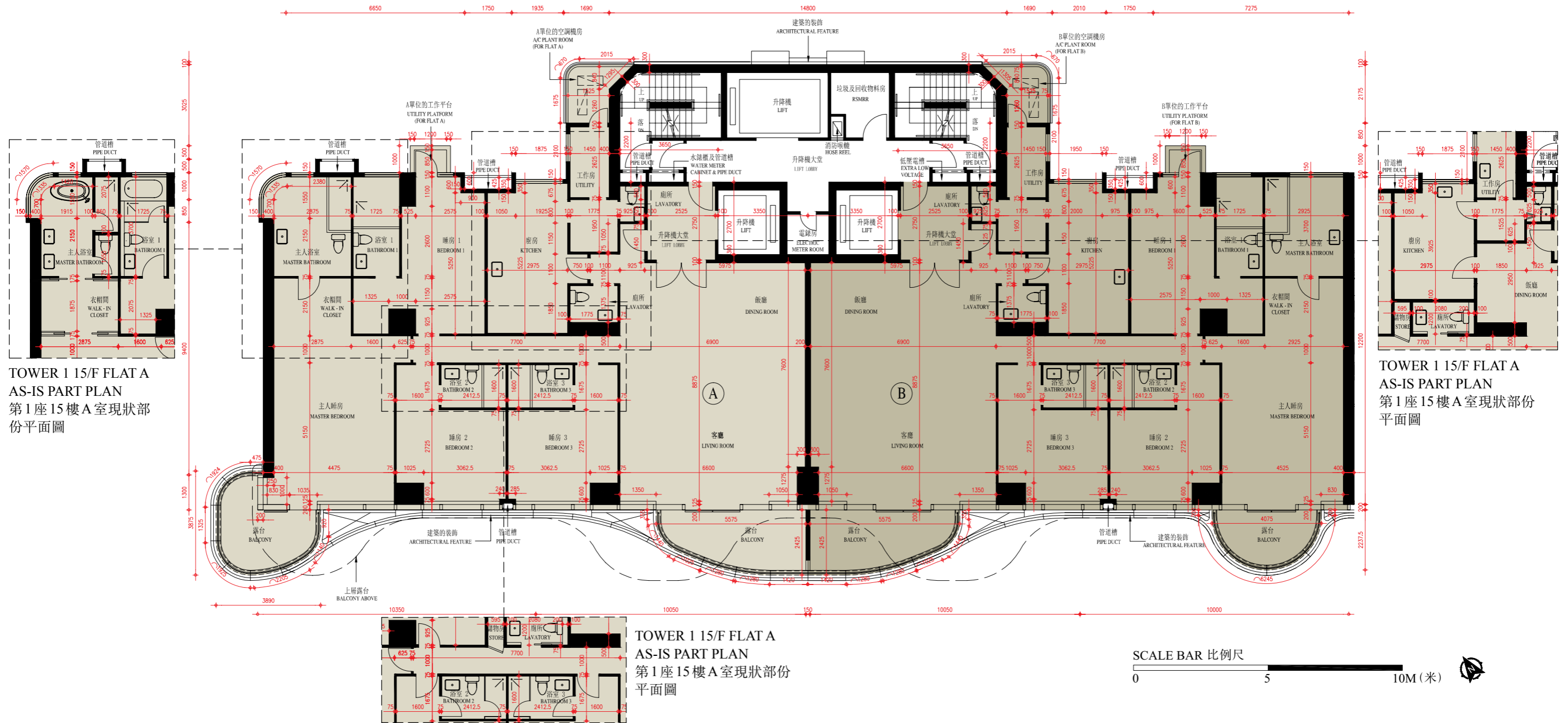
備註：

1. 層與層之間的高度指該樓層之石屎地台面之高度距離。
2. 樓面平面圖之尺規所列數字以毫米標示之建築結構尺寸。
3. 樓面平面圖中顯示之備註及名詞及簡稱之圖例，請參閱本售樓說明書第19頁。

11

FLOOR PLANS OF RESIDENTIAL PROPERTIES IN THE DEVELOPMENT 發展項目的住宅物業的樓面平面圖

TOWER 1 5/F, 7/F, 9/F, 11/F & 15/F FLOOR PLAN 第1座5樓、7樓、9樓、11樓及15樓平面圖



TOWER 1 15/F FLAT A
AS-IS PART PLAN
第1座15樓A室現狀部份
平面圖

TOWER 1 15/F FLAT A
AS-IS PART PLAN
第1座15樓A室現狀部份
平面圖

TOWER 1 15/F FLAT A
AS-IS PART PLAN
第1座15樓A室現狀部份
平面圖



Description 描述	Flat 單位	
	A	B
The thickness of the floor slabs (excluding plaster) of each residential property (mm) 每個住宅物業的樓板 (不包括灰泥) 的厚度 (毫米)	150 175 200	
The floor-to-floor height of each residential property (mm) 每個住宅物業的層與層之間的高度 (毫米)	2900 3000 3050 3400	2900 3000 3050 3400

The internal areas of the residential properties on the upper floors will generally be slightly larger than those on the lower floors because of reducing thickness of the structural walls on the upper floors.

因住宅物業的較高樓層的結構牆的厚度遞減，較高樓層的內部面積，一般比較低樓層的內部面積稍大。

Notes:

1. Floor-to-floor height refer to the height between the top surface of the structural slab of the floor and the top surface of the structural slab of its immediate upper floor.
2. The dimensions of floor plan are all structural dimensions in millimeter.
3. Please refer to page 19 of this sales brochure for notes and legend of the terms and abbreviations shown on floor plans.
4. Alteration(s) to 15/F Flat A is made by way of minor works and/ or exempted works under the Buildings Ordinance, please refer to the as-is part plan(s) for such alteration(s).

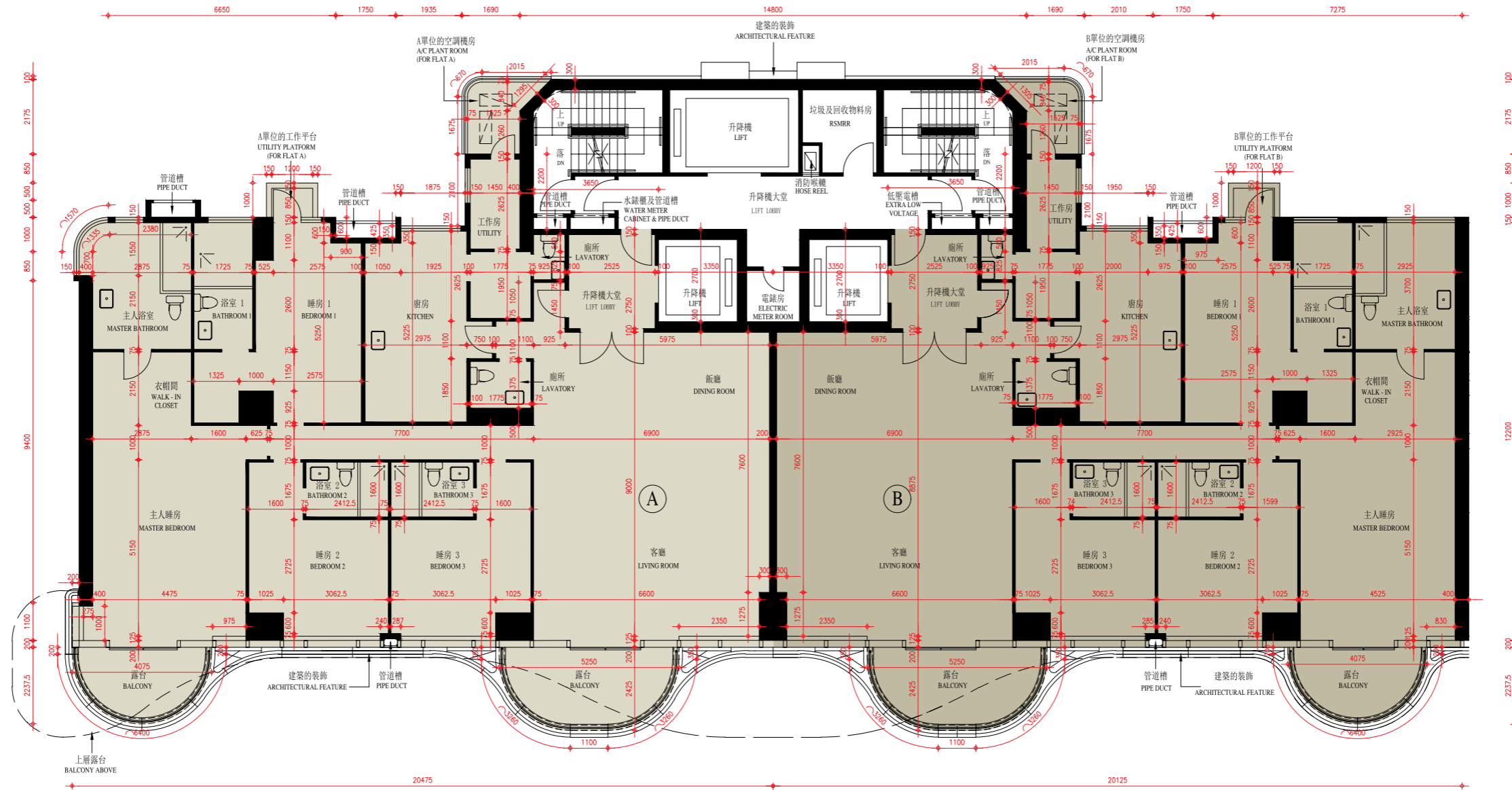
備註:

1. 層與層之間的高度指該樓層之石屎地台面之高度距離。
2. 樓面平面圖之尺規所列數字以毫米標示之建築結構尺寸。
3. 樓面平面圖中顯示之備註及名詞及簡稱之圖例，請參閱本售樓說明書第19頁。
4. 15樓單位A已進行《建築物條例》下的小型工程及/或獲豁免入則的改動工程，有關改動請參閱現狀部份平面圖。

11 FLOOR PLANS OF RESIDENTIAL PROPERTIES IN THE DEVELOPMENT

發展項目的住宅物業的樓面平面圖

TOWER 1 6/F, 8/F, 10/F, 12/F & 16/F FLOOR PLAN
第1座 6樓、8樓、10樓、12樓及16樓平面圖



SCALE BAR 比例尺



Description 描述	Flat 單位	
	A	B
The thickness of the floor slabs (excluding plaster) of each residential property (mm) 每個住宅物業的樓板 (不包括灰泥) 的厚度 (毫米)	150 175 200	
The floor-to-floor height of each residential property (mm) 每個住宅物業的層與層之間的高度 (毫米)	2900 3000 3050 3400	2900 3000 3050 3400

The internal areas of the residential properties on the upper floors will generally be slightly larger than those on the lower floors because of reducing thickness of the structural walls on the upper floors.

因住宅物業的較高樓層的結構牆的厚度遞減，較高樓層的內部面積，一般比較低樓層的內部面積稍大。

Notes:

1. Floor-to-floor height refer to the height between the top surface of the structural slab of the floor and the top surface of the structural slab of its immediate upper floor.
2. The dimensions of floor plan are all structural dimensions in millimeter.
3. Please refer to page 19 of this sales brochure for notes and legend of the terms and abbreviations shown on floor plans.

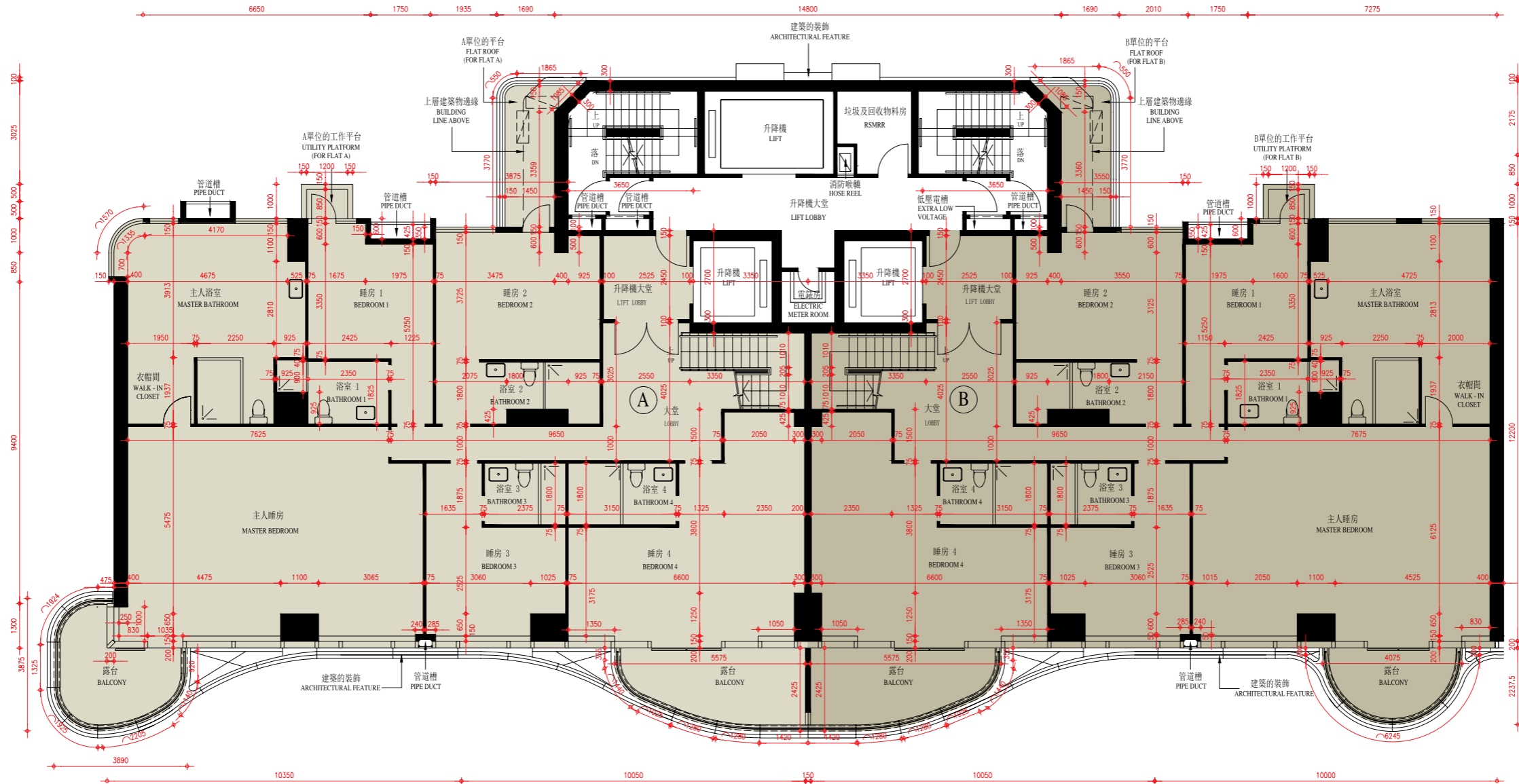
備註：

1. 層與層之間的高度指該樓層之石屎地台面之高度距離。
2. 樓面平面圖之尺規所列數字以毫米標示之建築結構尺寸。
3. 樓面平面圖中顯示之備註及名詞及簡稱之圖例，請參閱本售樓說明書第19頁。

11 FLOOR PLANS OF RESIDENTIAL PROPERTIES IN THE DEVELOPMENT

發展項目的住宅物業的樓面平面圖

TOWER 1 17/F FLOOR PLAN
第1座 17樓平面圖



SCALE BAR 比例尺



Description 描述	Flat 單位	
	A	B
The thickness of the floor slabs (excluding plaster) of each residential property (mm) 每個住宅物業的樓板 (不包括灰泥) 的厚度 (毫米)	150 175 200	
The floor-to-floor height of each residential property (mm) 每個住宅物業的層與層之間的高度 (毫米)	2850	2850
	2900	2900
	3000	3000
	3050	3050
	3100 3400	3100 3400

The internal areas of the residential properties on the upper floors will generally be slightly larger than those on the lower floors because of reducing thickness of the structural walls on the upper floors.

因住宅物業的較高樓層的結構牆的厚度遞減，較高樓層的內部面積，一般比較低樓層的內部面積稍大。

Notes:

1. Floor-to-floor height refer to the height between the top surface of the structural slab of the floor and the top surface of the structural slab of its immediate upper floor.
2. The dimensions of floor plan are all structural dimensions in millimeter.
3. Please refer to page 19 of this sales brochure for notes and legend of the terms and abbreviations shown on floor plans.

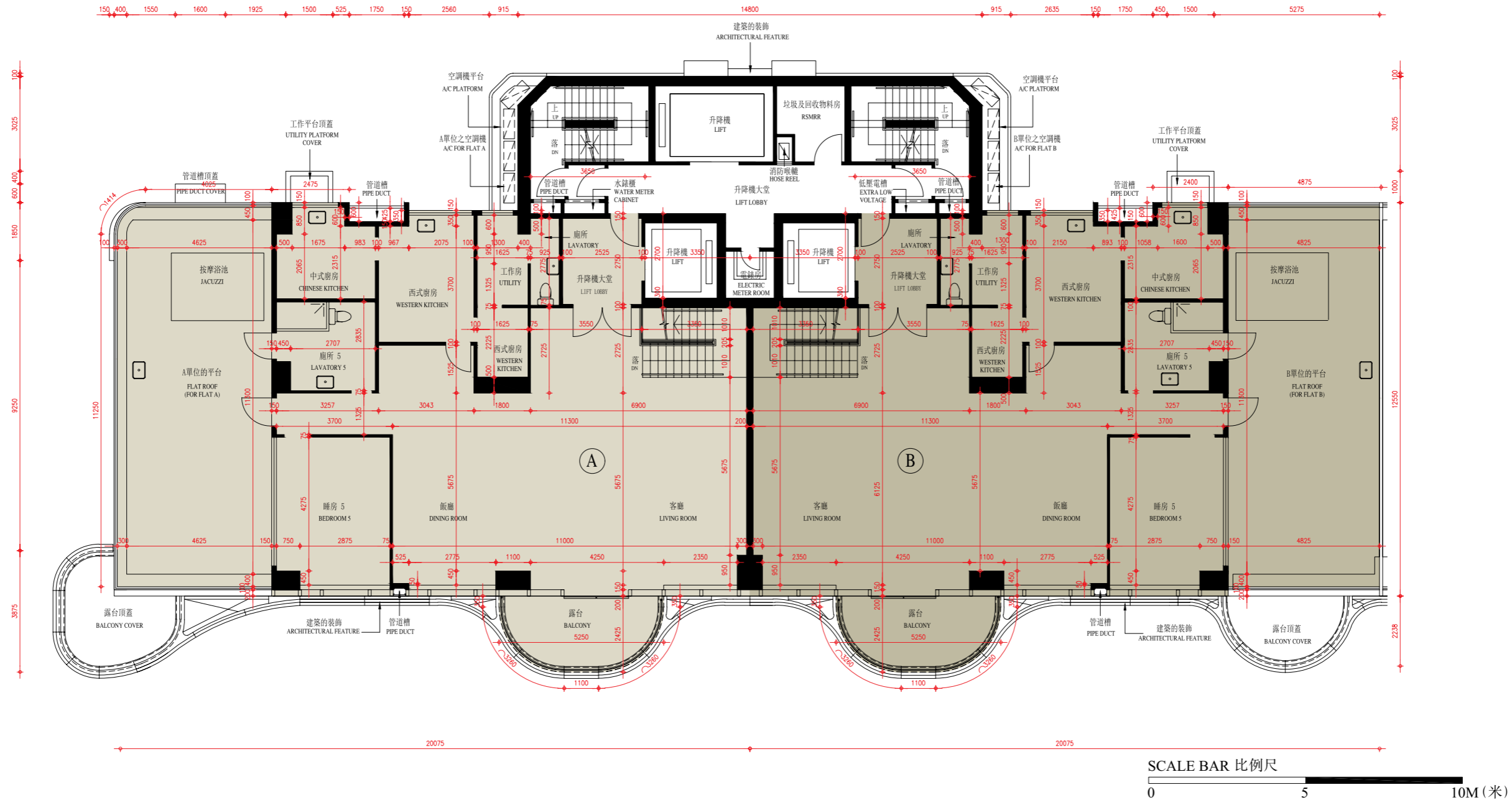
備註：

1. 層與層之間的高度指該樓層之石屎地台面之高度距離。
2. 樓面平面圖之尺規所列數字以毫米標示之建築結構尺寸。
3. 樓面平面圖中顯示之備註及名詞及簡稱之圖例，請參閱本售樓說明書第19頁。

11 FLOOR PLANS OF RESIDENTIAL PROPERTIES IN THE DEVELOPMENT

發展項目的住宅物業的樓面平面圖

TOWER 1 18/F FLOOR PLAN
第1座 18樓平面圖



Description 描述	Flat 單位	
	A	B
The thickness of the floor slabs (excluding plaster) of each residential property (mm) 每個住宅物業的樓板 (不包括灰泥) 的厚度 (毫米)	150	175
The floor-to-floor height of each residential property (mm) 每個住宅物業的層與層之間的高度 (毫米)	2525	2900
	2900	3000
	3000	3050
	3050	3400

The internal areas of the residential properties on the upper floors will generally be slightly larger than those on the lower floors because of reducing thickness of the structural walls on the upper floors.
因住宅物業的較高樓層的結構牆的厚度遞減，較高樓層的內部面積，一般比較低樓層的內部面積稍大。

Notes:

1. Floor-to-floor height refer to the height between the top surface of the structural slab of the floor and the top surface of the structural slab of its immediate upper floor.
2. The dimensions of floor plan are all structural dimensions in millimeter.
3. Please refer to page 19 of this sales brochure for notes and legend of the terms and abbreviations shown on floor plans.

備註:

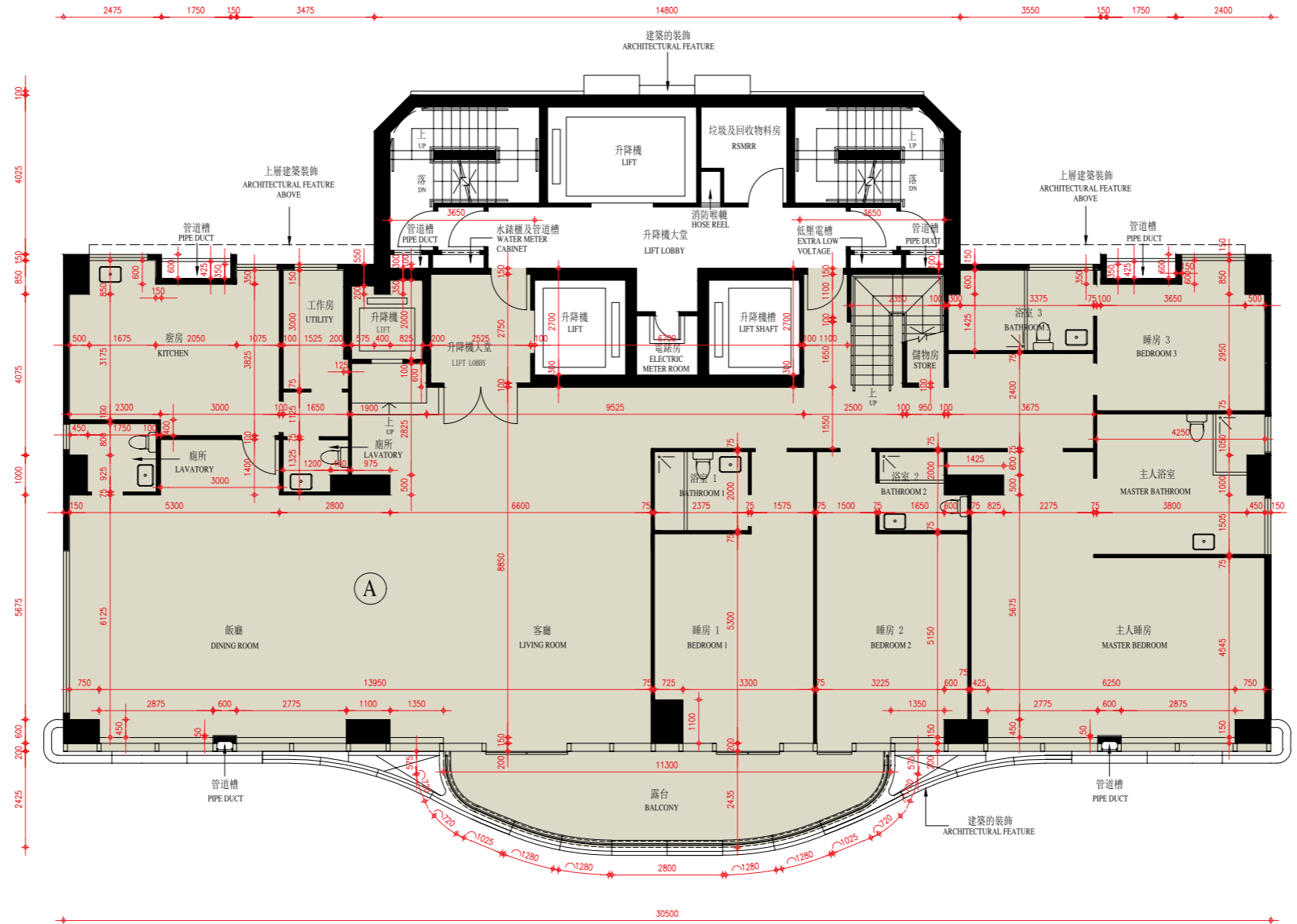
1. 層與層之間的高度指該樓層之石屎地台面之高度距離。
2. 樓面平面圖之尺規所列數字以毫米標示之建築結構尺寸。
3. 樓面平面圖中顯示之備註及名詞及簡稱之圖例，請參閱本售樓說明書第19頁。

11 FLOOR PLANS OF RESIDENTIAL PROPERTIES IN THE DEVELOPMENT

發展項目的住宅物業的樓面平面圖

TOWER 1 19/F FLOOR PLAN

第1座 19樓平面圖



Description 描述	Flat 單位
	A
The thickness of the floor slabs (excluding plaster) of each residential property (mm) 每個住宅物業的樓板 (不包括灰泥) 的厚度 (毫米)	150
	200
	250
	300
The floor-to-floor height of each residential property (mm) 每個住宅物業的層與層之間的高度 (毫米)	2900
	3000
	3050
	3100
	3400
	3500

SCALE BAR 比例尺



The internal areas of the residential properties on the upper floors will generally be slightly larger than those on the lower floors because of reducing thickness of the structural walls on the upper floors.

因住宅物業的較高樓層的結構牆的厚度遞減，較高樓層的內部面積，一般比較低樓層的內部面積稍大。

Notes:

1. Floor-to-floor height refer to the height between the top surface of the structural slab of the floor and the top surface of the structural slab of its immediate upper floor.
2. The dimensions of floor plan are all structural dimensions in millimeter.
3. Please refer to page 19 of this sales brochure for notes and legend of the terms and abbreviations shown on floor plans.

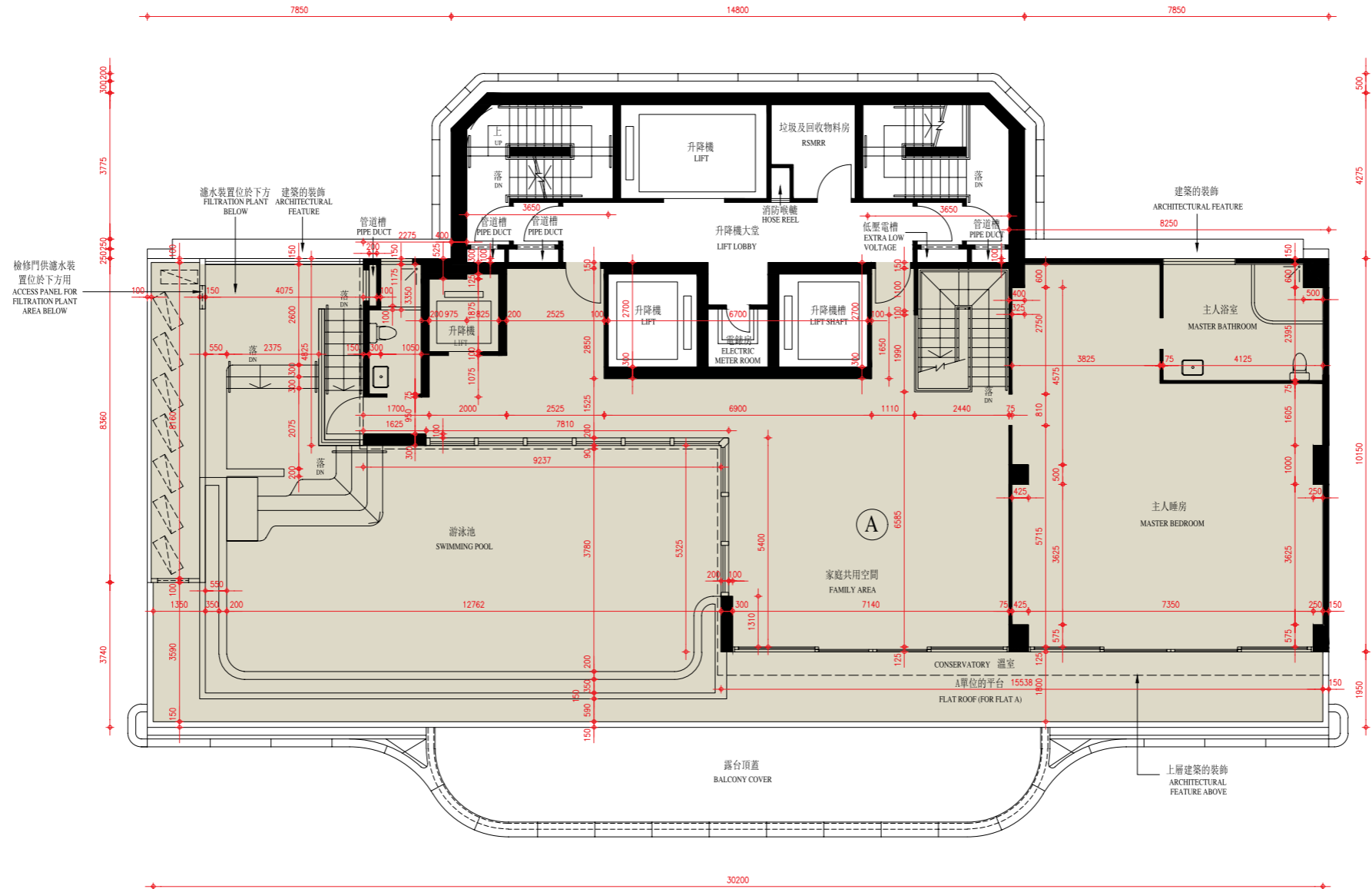
備註：

1. 層與層之間的高度指該樓層之石屎地台面之高度距離。
2. 樓面平面圖之尺規所列數字以毫米標示之建築結構尺寸。
3. 樓面平面圖中顯示之備註及名詞及簡稱之圖例，請參閱本售樓說明書第19頁。

11 FLOOR PLANS OF RESIDENTIAL PROPERTIES IN THE DEVELOPMENT

發展項目的住宅物業的樓面平面圖

TOWER 1 20/F FLOOR PLAN 第1座 20樓平面圖



Description 描述	Flat 單位
	A
The thickness of the floor slabs (excluding plaster) of each residential property (mm) 每個住宅物業的樓板 (不包括灰泥) 的厚度 (毫米)	150 200
The floor-to-floor height of each residential property (mm) 每個住宅物業的層與層之間的高度 (毫米)	3000 3400 3700 4200 4500

The internal areas of the residential properties on the upper floors will generally be slightly larger than those on the lower floors because of reducing thickness of the structural walls on the upper floors.

因住宅物業的較高樓層的結構牆的厚度遞減，較高樓層的內部面積，一般比較低樓層的內部面積稍大。

Notes:

1. Floor-to-floor height refer to the height between the top surface of the structural slab of the floor and the top surface of the structural slab of its immediate upper floor.
2. The dimensions of floor plan are all structural dimensions in millimeter.
3. Please refer to page 19 of this sales brochure for notes and legend of the terms and abbreviations shown on floor plans.
4. The conservatory, if any, forms part of a residential property, is not common part of the Development. Where applicable, the saleable area of the relevant residential properties specified in the section "Area of Residential Properties in the Development" already includes the floor areas of such conservatory. The Authorised Person for the Development has certified that (a) there is no restriction on the usage of such conservatory which will affect owner's enjoyment of the relevant residential property and (b) such conservatory is made for the exclusive use of the owner of the relevant residential property.

備註:

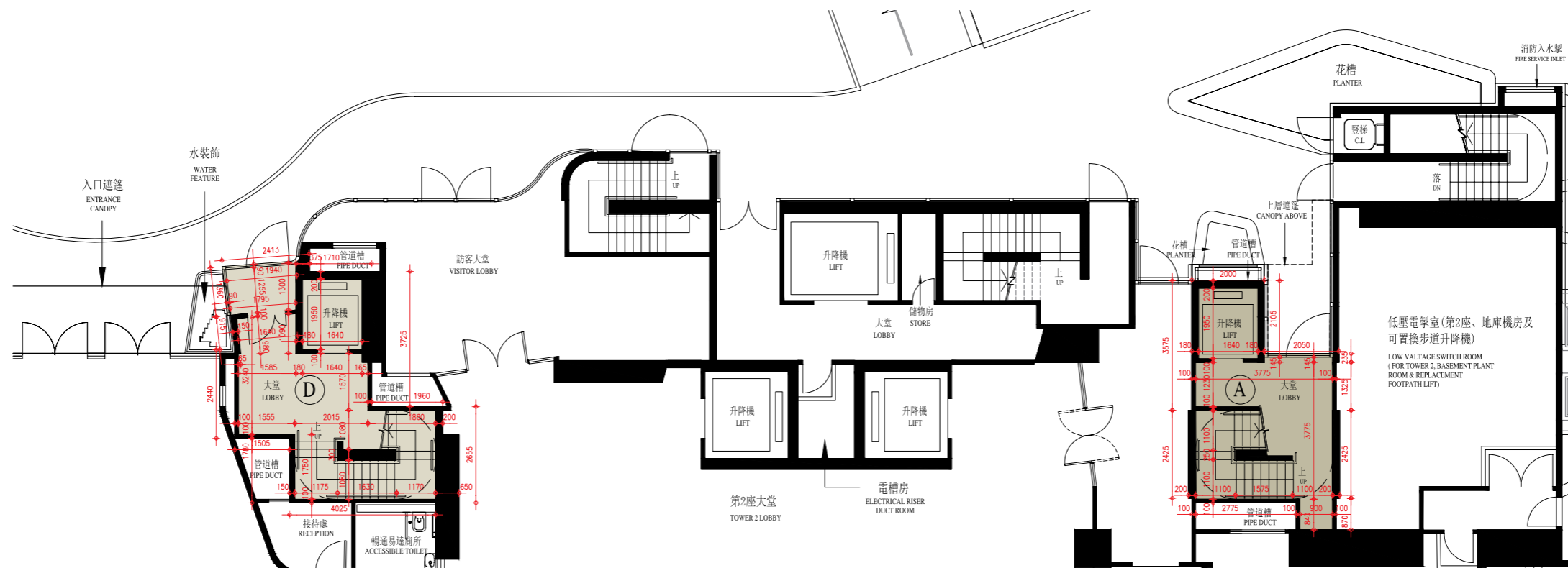
1. 層與層之間的高度指該樓層之石屎地台面之高度距離。
2. 樓面平面圖之尺規所列數字以毫米標示之建築結構尺寸。
3. 樓面平面圖中顯示之備註及名詞及簡稱之圖例，請參閱本售樓說明書第19頁。
4. 溫室 (如有) 屬住宅物業一部分，並非發展項目之公用部分。如適用，在「發展項目中的住宅物業的面積」部份內所列出的有關住宅物業之實用面積包括該溫室之樓面面積。發展項目的認可人士已證明溫室(a)在使用上沒有限制亦不會對相關住宅物業業主享用該住宅物業造成影響及(b)是專供相關住宅物業業主使用而設。

11 FLOOR PLANS OF RESIDENTIAL PROPERTIES IN THE DEVELOPMENT

發展項目的住宅物業的樓面平面圖

TOWER 2 G/F FLOOR PLAN

第2座 地下平面圖



SCALE BAR 比例尺

0 5 10M (米)



Description 描述	Flat 單位	
	A	D
The thickness of the floor slabs (excluding plaster) of each residential property (mm) 每個住宅物業的樓板 (不包括灰泥) 的厚度 (毫米)	1600 2000	2400 2800
The floor-to-floor height of each residential property (mm) 每個住宅物業的層與層之間的高度 (毫米)	6600 7000	6600 7000

The internal areas of the residential properties on the upper floors will generally be slightly larger than those on the lower floors because of reducing thickness of the structural walls on the upper floors.

因住宅物業的較高樓層的結構牆的厚度遞減，較高樓層的內部面積，一般比較低樓層的內部面積稍大。

Notes:

1. Floor-to-floor height refer to the height between the top surface of the structural slab of the floor and the top surface of the structural slab of its immediate upper floor.
2. The dimensions of floor plan are all structural dimensions in millimeter.
3. Please refer to page 19 of this sales brochure for notes and legend of the terms and abbreviations shown on floor plans.

備註：

1. 層與層之間的高度指該樓層之石屎地台面之高度距離。
2. 樓面平面圖之尺規所列數字以毫米標示之建築結構尺寸。
3. 樓面平面圖中顯示之備註及名詞及簡稱之圖例，請參閱本售樓說明書第19頁。

11 FLOOR PLANS OF RESIDENTIAL PROPERTIES IN THE DEVELOPMENT

發展項目的住宅物業的樓面平面圖

TOWER 2 1/F FLOOR PLAN
第2座 1樓平面圖

The internal areas of the residential properties on the upper floors will generally be slightly larger than those on the lower floors because of reducing thickness of the structural walls on the upper floors.

因住宅物業的較高樓層的結構牆的厚度遞減，較高樓層的內部面積，一般比較低樓層的內部面積稍大。

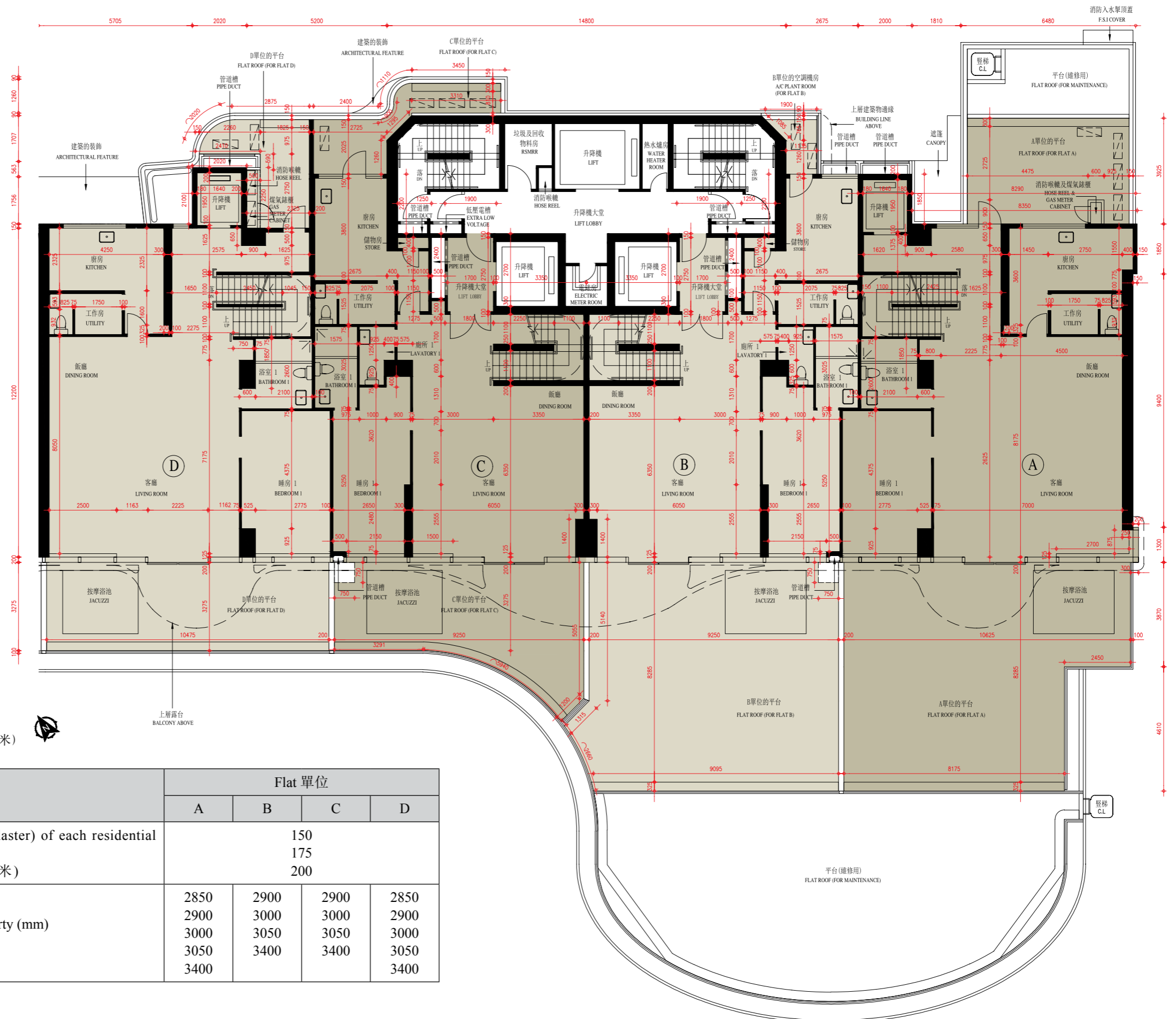
Notes:

1. Floor-to-floor height refer to the height between the top surface of the structural slab of the floor and the top surface of the structural slab of its immediate upper floor.
2. The dimensions of floor plan are all structural dimensions in millimeter.
3. Please refer to page 19 of this sales brochure for notes and legend of the terms and abbreviations shown on floor plans.

備註：

1. 層與層之間的高度指該樓層之石屎地台面之高度距離。
2. 樓面平面圖之尺規所列數字以毫米標示之建築結構尺寸。
3. 樓面平面圖中顯示之備註及名詞及簡稱之圖例，請參閱本售樓說明書第19頁。

SCALE BAR 比例尺



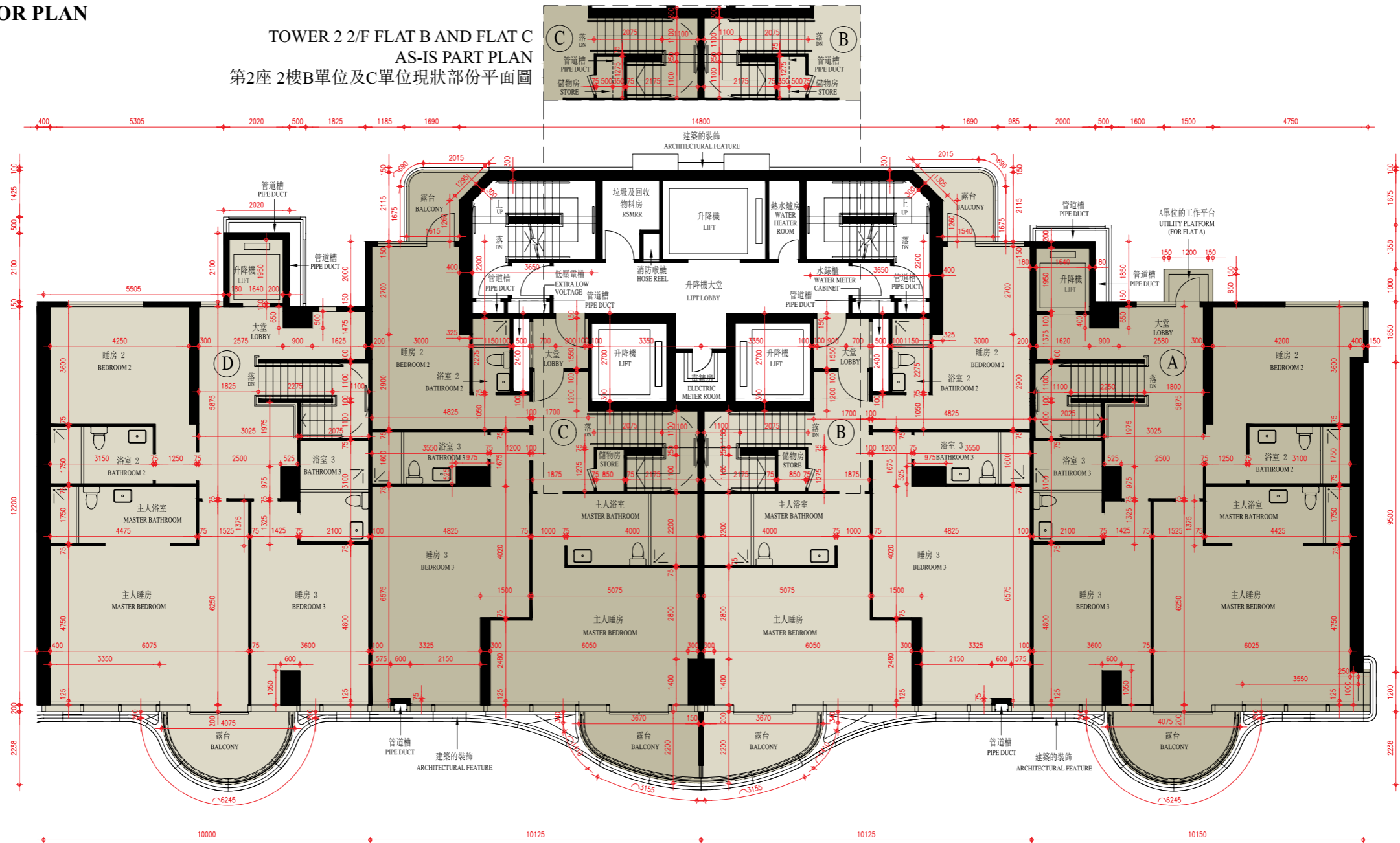
Description 描述	Flat 單位			
	A	B	C	D
The thickness of the floor slabs (excluding plaster) of each residential property (mm) 每個住宅物業的樓板 (不包括灰泥) 的厚度 (毫米)		150 175 200		
The floor-to-floor height of each residential property (mm) 每個住宅物業的層與層之間的高度 (毫米)	2850	2900	2900	2850
	2900	3000	3000	2900
	3000	3050	3050	3000
	3050	3400	3400	3050

11 FLOOR PLANS OF RESIDENTIAL PROPERTIES IN THE DEVELOPMENT

發展項目的住宅物業的樓面平面圖

TOWER 2 2/F FLOOR PLAN
第2座2樓平面圖

TOWER 2 2/F FLAT B AND FLAT C
AS-IS PART PLAN
第2座2樓B單位及C單位現狀部份平面圖



SCALE BAR 比例尺

0 5 10M (米)

Description 描述	Flat 單位			
	A	B	C	D
The thickness of the floor slabs (excluding plaster) of each residential property (mm) 每個住宅物業的樓板 (不包括灰泥) 的厚度 (毫米)	150 175	150 175 200	150	150 175
The floor-to-floor height of each residential property (mm) 每個住宅物業的層與層之間的高度 (毫米)	2900 3000 3050 3400	2900 3000 3050 3150 3400	2900 3000 3050 3150 3400	2900 3000 3050 3400

The internal areas of the residential properties on the upper floors will generally be slightly larger than those on the lower floors because of reducing thickness of the structural walls on the upper floors.
因住宅物業的較高樓層的結構牆的厚度遞減，較高樓層的內部面積，一般比較低樓層的內部面積稍大。

Notes:

1. Floor-to-floor height refer to the height between the top surface of the structural slab of the floor and the top surface of the structural slab of its immediate upper floor.
2. The dimensions of floor plan are all structural dimensions in millimeter.
3. Please refer to page 19 of this sales brochure for notes and legend of the terms and abbreviations shown on floor plans.
4. Alteration(s) to Flat B and Flat C are made by way of minor works and/or exempted works under the Buildings Ordinance, please refer to the as-is part plan(s) for such alteration(s).

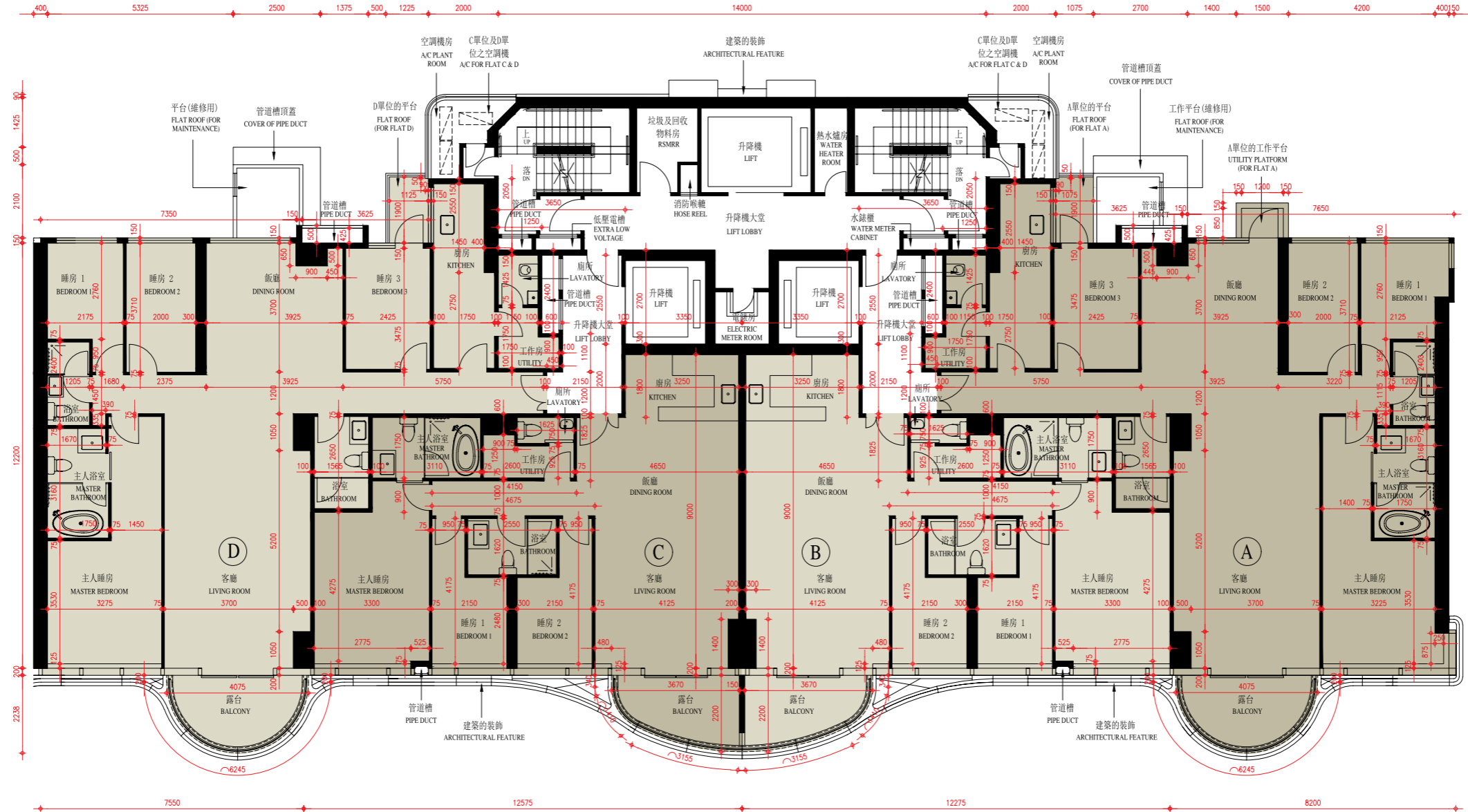
備註:

1. 層與層之間的高度指該樓層之石屎地台面之高度距離。
2. 樓面平面圖之尺規所列數字以毫米標示之建築結構尺寸。
3. 樓面平面圖中顯示之備註及名詞及簡稱之圖例，請參閱本售樓說明書第19頁。
4. 單位B及單位C已進行《建築物條例》下的小型工程及/或獲豁免入則的動工工程，有關動工請參閱現狀部份平面圖。

11 FLOOR PLANS OF RESIDENTIAL PROPERTIES IN THE DEVELOPMENT

發展項目的住宅物業的樓面平面圖

TOWER 2 3/F FLOOR PLAN 第2座3樓平面圖



Description 描述	Flat 單位			
	A	B	C	D
The thickness of the floor slabs (excluding plaster) of each residential property (mm) 每個住宅物業的樓板 (不包括灰泥) 的厚度 (毫米)	150 200			
The floor-to-floor height of each residential property (mm) 每個住宅物業的層與層之間的高度 (毫米)	2900	3000	3000	2900
	3000	3050	3050	3000
	3050	3400	3400	3050
	3400			3400

The internal areas of the residential properties on the upper floors will generally be slightly larger than those on the lower floors because of reducing thickness of the structural walls on the upper floors.
因住宅物業的較高樓層的結構牆的厚度遞減，較高樓層的內部面積，一般比較低樓層的內部面積稍大。

Notes:

1. Floor-to-floor height refer to the height between the top surface of the structural slab of the floor and the top surface of the structural slab of its immediate upper floor.
2. The dimensions of floor plan are all structural dimensions in millimeter.
3. Please refer to page 19 of this sales brochure for notes and legend of the terms and abbreviations shown on floor plans.

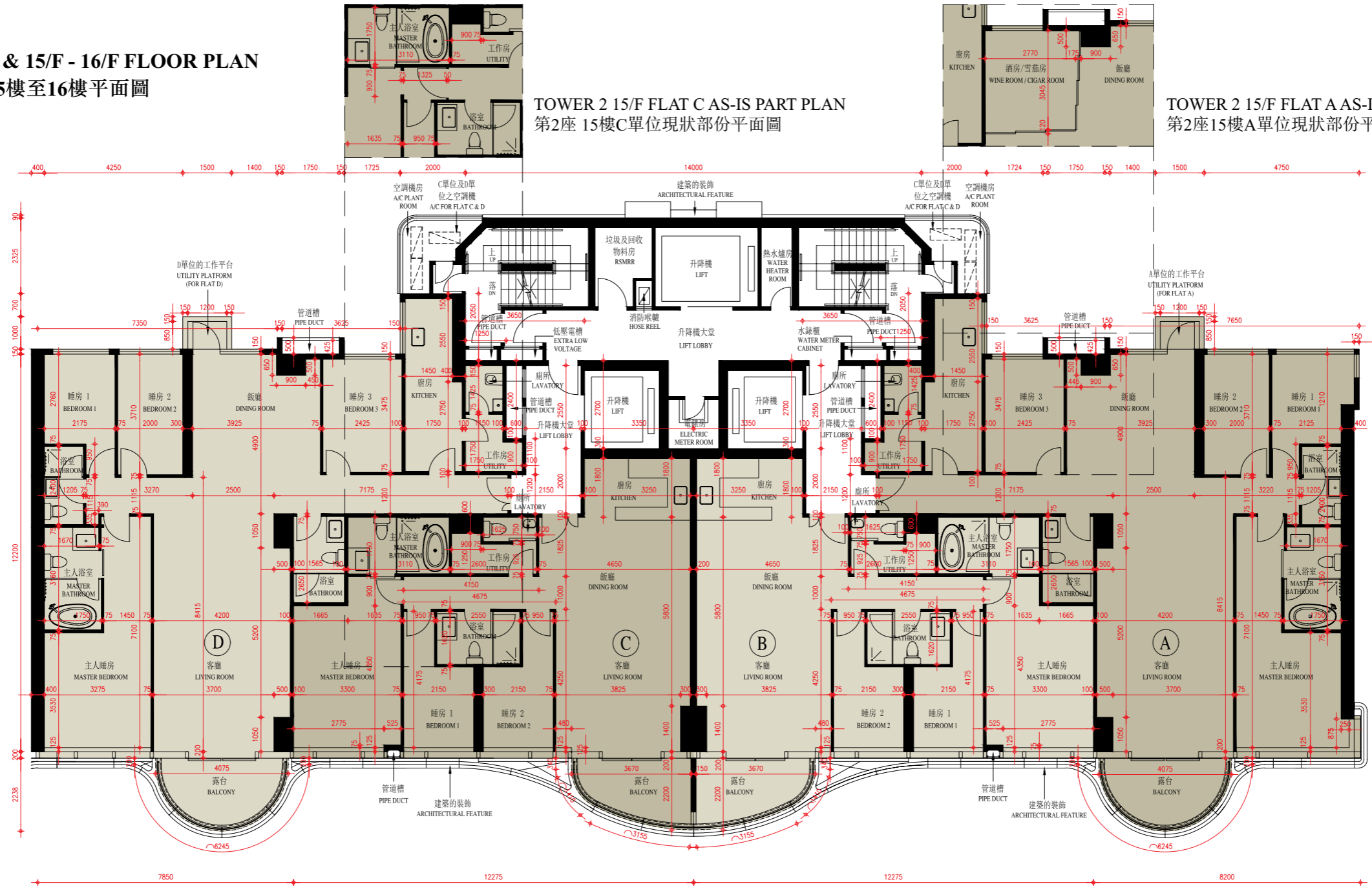
備註：

1. 層與層之間的高度指該樓層之石屎地台面之高度距離。
2. 樓面平面圖之尺規所列數字以毫米標示之建築結構尺寸。
3. 樓面平面圖中顯示之備註及名詞及簡稱之圖例，請參閱本售樓說明書第19頁。

11 FLOOR PLANS OF RESIDENTIAL PROPERTIES IN THE DEVELOPMENT

發展項目的住宅物業的樓面平面圖

TOWER 2 5/F - 12/F & 15/F - 16/F FLOOR PLAN
第2座 5樓至12樓及15樓至16樓平面圖



TOWER 2 15/F FLAT C AS-IS PART PLAN
第2座 15樓C單位現狀部份平面圖

TOWER 2 15/F FLAT A AS-IS PART PLAN
第2座 15樓A單位現狀部份平面圖



Description 描述	Flat 單位			
	A	B	C	D
The thickness of the floor slabs (excluding plaster) of each residential property (mm) 每個住宅物業的樓板 (不包括灰泥) 的厚度 (毫米)	150 200			
The floor-to-floor height of each residential property (mm) 每個住宅物業的層與層之間的高度 (毫米)	2900 3000 3050 3400	3000 3050 3400	3000 3050 3400	2900 3000 3050 3400

The internal areas of the residential properties on the upper floors will generally be slightly larger than those on the lower floors because of reducing thickness of the structural walls on the upper floors.
因住宅物業的較高樓層的結構牆的厚度遞減，較高樓層的內部面積，一般比較低樓層的內部面積稍大。

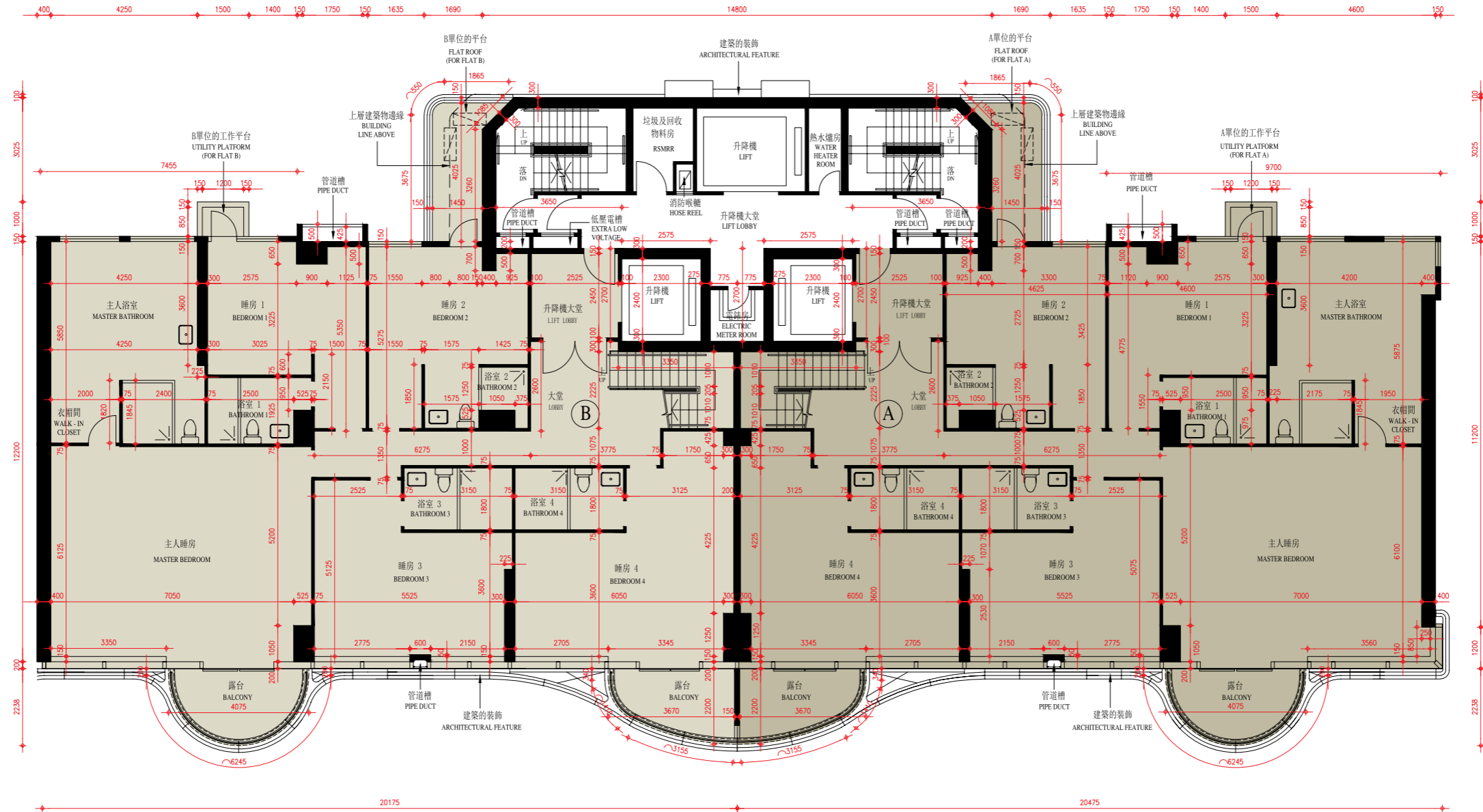
Notes:
1. Floor-to-floor height refer to the height between the top surface of the structural slab of the floor and the top surface of the structural slab of its immediate upper floor.
2. The dimensions of floor plan are all structural dimensions in millimeter.
3. Please refer to page 19 of this sales brochure for notes and legend of the terms and abbreviations shown on floor plans.
4. Alteration(s) to Flat A and Flat C on 15/F are made by way of minor works and/or exempted works under the Buildings Ordinance, please refer to the as-is part plan(s) for such alteration(s).

備註：
1. 層與層之間的高度指該樓層之石屎地台面之高度距離。
2. 樓面平面圖之尺規所列數字以毫米標示之建築結構尺寸。
3. 樓面平面圖中顯示之備註及名詞及簡稱之圖例，請參閱本售樓說明書第19頁。
4. 15樓單位A及單位C已進行《建築物條例》下的小型工程及/或獲豁免入則的改動工程，有關改動請參閱現狀部份平面圖。

11 FLOOR PLANS OF RESIDENTIAL PROPERTIES IN THE DEVELOPMENT

發展項目的住宅物業的樓面平面圖

TOWER 2 17/F FLOOR PLAN 第2座 17樓平面圖



Description 描述	Flat 單位	
	A	B
The thickness of the floor slabs (excluding plaster) of each residential property (mm) 每個住宅物業的樓板 (不包括灰泥) 的厚度 (毫米)	150 175 200	
The floor-to-floor height of each residential property (mm) 每個住宅物業的層與層之間的高度 (毫米)	2850	2850
	2900	2900
	3000	3000
	3050	3050
	3100	3100
	3250 3400	3250 3400



The internal areas of the residential properties on the upper floors will generally be slightly larger than those on the lower floors because of reducing thickness of the structural walls on the upper floors.

因住宅物業的較高樓層的結構牆的厚度遞減，較高樓層的內部面積，一般比較低樓層的內部面積稍大。

Notes:

1. Floor-to-floor height refer to the height between the top surface of the structural slab of the floor and the top surface of the structural slab of its immediate upper floor.
2. The dimensions of floor plan are all structural dimensions in millimeter.
3. Please refer to page 19 of this sales brochure for notes and legend of the terms and abbreviations shown on floor plans.

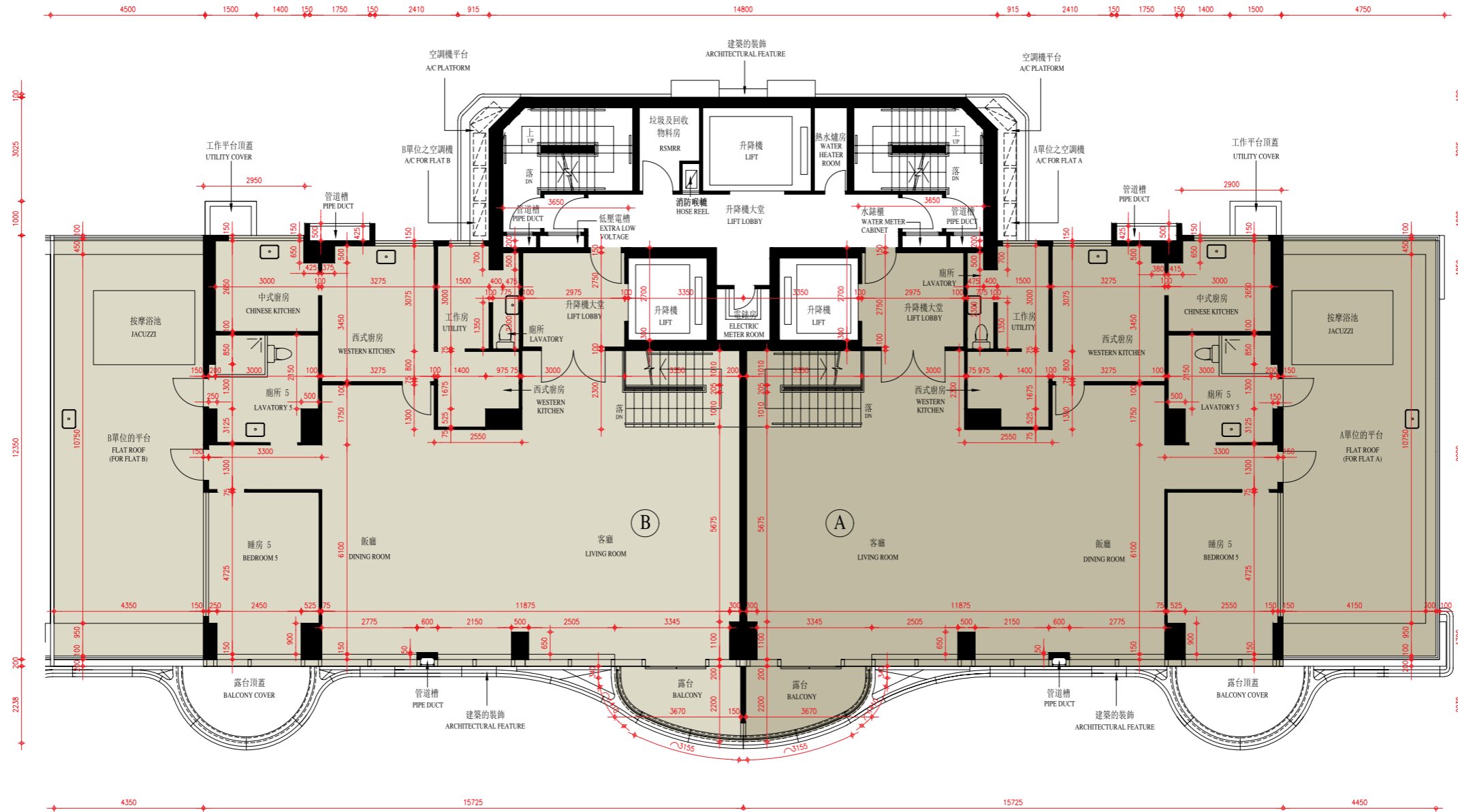
備註:

1. 層與層之間的高度指該樓層之石屎地台面之高度距離。
2. 樓面平面圖之尺規所列數字以毫米標示之建築結構尺寸。
3. 樓面平面圖中顯示之備註及名詞及簡稱之圖例，請參閱本售樓說明書第19頁。

11 FLOOR PLANS OF RESIDENTIAL PROPERTIES IN THE DEVELOPMENT

發展項目的住宅物業的樓面平面圖

TOWER 2 18/F FLOOR PLAN 第2座 18樓平面圖



Description 描述	Flat 單位	
	A	B
The thickness of the floor slabs (excluding plaster) of each residential property (mm) 每個住宅物業的樓板 (不包括灰泥) 的厚度 (毫米)	150 175	
The floor-to-floor height of each residential property (mm) 每個住宅物業的層與層之間的高度 (毫米)	2525	2900
	2900	3000
	3000	3050
	3400	3400

The internal areas of the residential properties on the upper floors will generally be slightly larger than those on the lower floors because of reducing thickness of the structural walls on the upper floors.

因住宅物業的較高樓層的結構牆的厚度遞減，較高樓層的內部面積，一般比較低樓層的內部面積稍大。

Notes:

1. Floor-to-floor height refer to the height between the top surface of the structural slab of the floor and the top surface of the structural slab of its immediate upper floor.
2. The dimensions of floor plan are all structural dimensions in millimeter.
3. Please refer to page 19 of this sales brochure for notes and legend of the terms and abbreviations shown on floor plans.

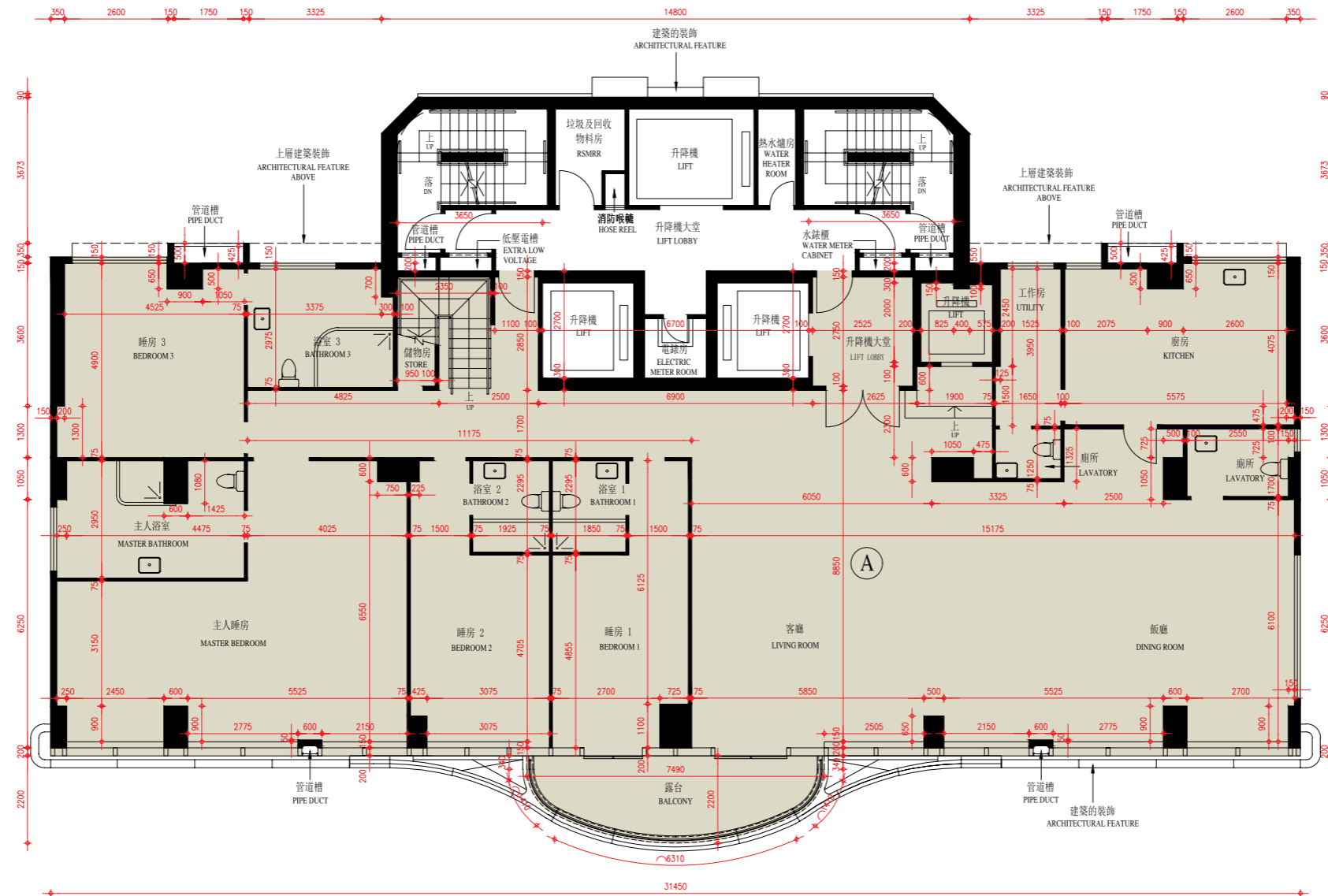
備註：

1. 層與層之間的高度指該樓層之石屎地台面之高度距離。
2. 樓面平面圖之尺規所列數字以毫米標示之建築結構尺寸。
3. 樓面平面圖中顯示之備註及名詞及簡稱之圖例，請參閱本售樓說明書第19頁。

11 FLOOR PLANS OF RESIDENTIAL PROPERTIES IN THE DEVELOPMENT

發展項目的住宅物業的樓面平面圖

TOWER 2 19/F FLOOR PLAN
第2座 19樓平面圖



Description 描述	Flat 單位
	A
The thickness of the floor slabs (excluding plaster) of each residential property (mm) 每個住宅物業的樓板 (不包括灰泥) 的厚度 (毫米)	150
	200
	250
	300
The floor-to-floor height of each residential property (mm) 每個住宅物業的層與層之間的高度 (毫米)	2900
	2950
	3000
	3050
	3100
	3500



The internal areas of the residential properties on the upper floors will generally be slightly larger than those on the lower floors because of reducing thickness of the structural walls on the upper floors.

因住宅物業的較高樓層的結構牆的厚度遞減，較高樓層的內部面積，一般比較低樓層的內部面積稍大。

Notes:

1. Floor-to-floor height refer to the height between the top surface of the structural slab of the floor and the top surface of the structural slab of its immediate upper floor.
2. The dimensions of floor plan are all structural dimensions in millimeter.
3. Please refer to page 19 of this sales brochure for notes and legend of the terms and abbreviations shown on floor plans.

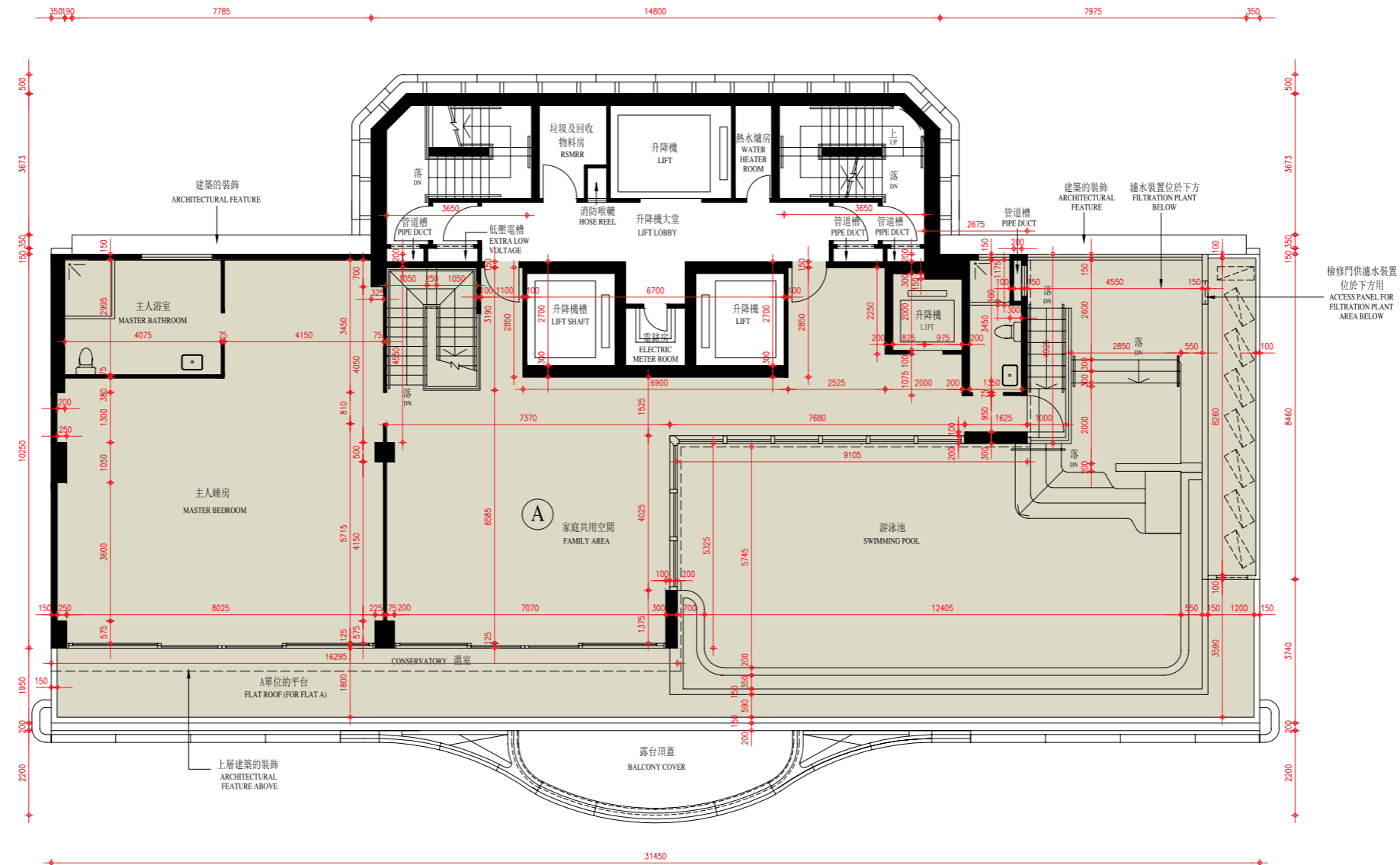
備註：

1. 層與層之間的高度指該樓層之石屎地台面之高度距離。
2. 樓面平面圖之尺規所列數字以毫米標示之建築結構尺寸。
3. 樓面平面圖中顯示之備註及名詞及簡稱之圖例，請參閱本售樓說明書第19頁。

11 FLOOR PLANS OF RESIDENTIAL PROPERTIES IN THE DEVELOPMENT

發展項目的住宅物業的樓面平面圖

TOWER 2 20/F FLOOR PLAN
第2座 20樓平面圖



Description 描述	Flat 單位
	A
The thickness of the floor slabs (excluding plaster) of each residential property (mm) 每個住宅物業的樓板 (不包括灰泥) 的厚度 (毫米)	150 200
The floor-to-floor height of each residential property (mm) 每個住宅物業的層與層之間的高度 (毫米)	3000
	3400
	3700
	4200 4500

The internal areas of the residential properties on the upper floors will generally be slightly larger than those on the lower floors because of reducing thickness of the structural walls on the upper floors.

因住宅物業的較高樓層的結構牆的厚度遞減，較高樓層的內部面積，一般比較低樓層的內部面積稍大。

Notes:

1. Floor-to-floor height refer to the height between the top surface of the structural slab of the floor and the top surface of the structural slab of its immediate upper floor.
2. The dimensions of floor plan are all structural dimensions in millimeter.
3. Please refer to page 19 of this sales brochure for notes and legend of the terms and abbreviations shown on floor plans.
4. The conservatory, if any, forms part of a residential property, is not common part of the Development. Where applicable, the saleable area of the relevant residential properties specified in the section "Area of Residential Properties in the Development" already includes the floor areas of such conservatory. The Authorised Person for the Development has certified that (a) there is no restriction on the usage of such conservatory which will affect owner's enjoyment of the relevant residential property and (b) such conservatory is made for the exclusive use of the owner of the relevant residential property.

備註:

1. 層與層之間的高度指該樓層之石屎地台面之高度距離。
2. 樓面平面圖之尺規所列數字以毫米標示之建築結構尺寸。
3. 樓面平面圖中顯示之備註及名詞及簡稱之圖例，請參閱本售樓說明書第19頁。
4. 溫室 (如有) 屬住宅物業一部分，並非發展項目之公用部分。如適用，在「發展項目中的住宅物業的面積」部份內所列出的有關住宅物業之實用面積包括該溫室之樓面面積。發展項目的認可人士已證明溫室(a)在使用上沒有限制亦不會對相關住宅物業業主享用該住宅物業造成影響及(b)是專供相關住宅物業業主使用而設。