

LEGEND FOR FLOOR PLAN 平面圖圖例

A/C PLATFORM	= Air-conditioner Platform	= 冷氣機平台
BAL.	= Balcony	= 露台
BATH	= Bathroom	= 浴室
DINING	= Dining Room	= 飯廳
KIT.	= Kitchen	= 廚房
LIVING	= Living Room	= 客廳
OPEN KIT.	= Open Kitchen	= 開放式廚房
TOP OF BAL.	= Top of Balcony	= 露台頂部

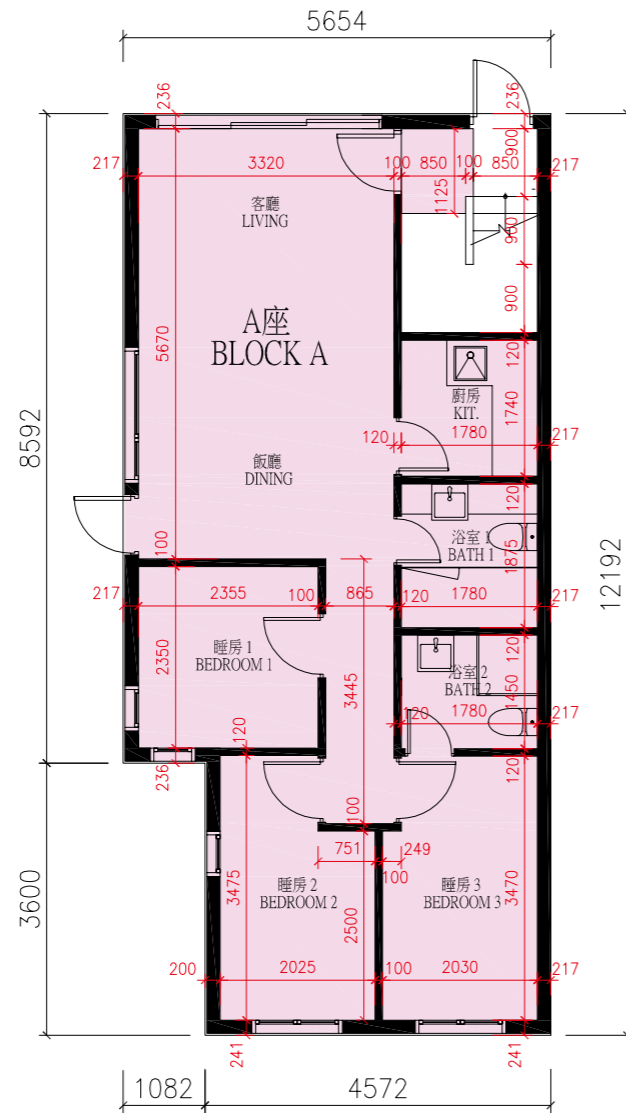
Notes:

1. There may be architectural features on external walls of some of the floors.
2. Common pipes exposed and/or enclosed in cladding are located at/adjacent to flat roof and/or external wall of some flats.
3. There are sunken slabs and/or ceiling bulkheads at living rooms, dining rooms, bedrooms, corridors, bathrooms, store rooms, lavatories and kitchens of some flats for the air-conditioning system and/or M&E services. There are exposed pipes/ductings for air-conditioning system and/ or M&E services within some store rooms.
4. Balconies and utility platforms are non-enclosed areas.
5. Symbols of fittings and fitments shown on the floor plans, such as bathtubs, sink, water closets, shower, sink counter etc. are architectural symbols retrieved from the latest approved general building plans for general indication only.
6. Floor-to-floor height refers to the height between the top surface of the structural slab of the floor and the top surface of the structural slab of its immediate upper floor.
7. The internal ceiling height within some residential properties may vary due to structural, architectural and/or decoration design variations.

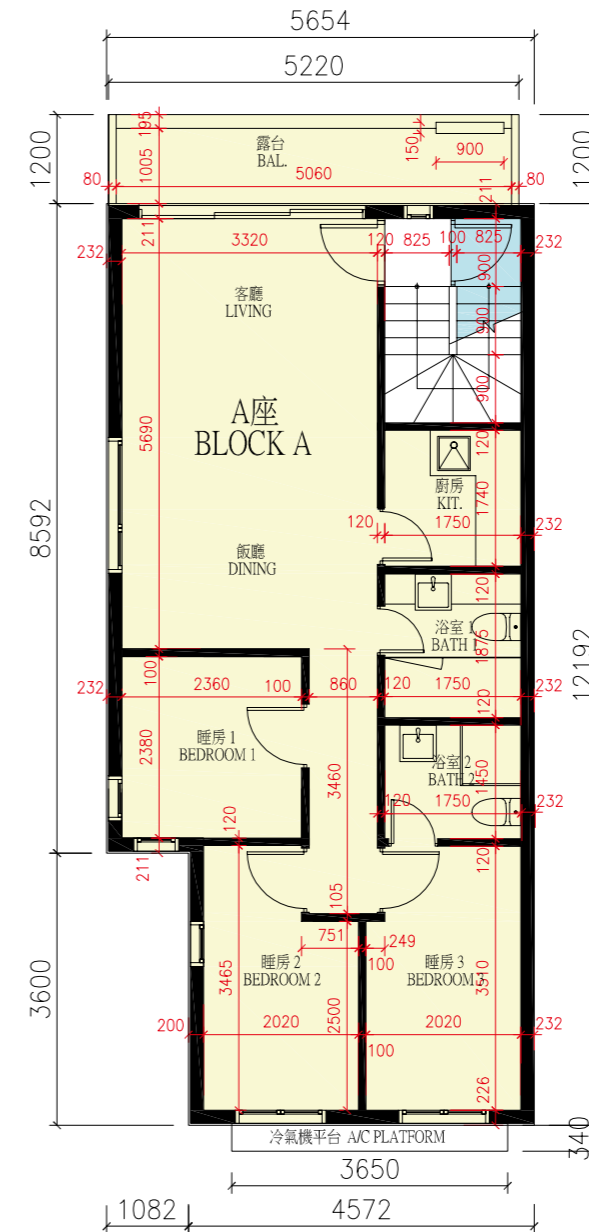
備註:

1. 部分樓層外牆範圍設有建築裝飾。
2. 部分單位的平台及 / 或外牆處或附近設有外露及 / 或外牆裝飾板內藏之公用喉管。
3. 部分單位客廳、飯廳、睡房、走廊、浴室、儲物室、洗手間及廚房天花有跌級樓板及 / 或假天花用以裝置冷氣系統及 / 或其他機電設備。部分儲物室內設有冷氣及 / 或機電設備之外露喉管 / 管道。
4. 露台及工作平台為不可封閉的地方。
5. 樓面平面圖上所顯示的形象裝置符號，例如浴缸、洗滌盆、坐廁、淋浴間、洗滌盆櫃等乃摘自最新的經批准的建築圖則，只作一般性標誌。
6. 層與層之間的高度指該樓層之石屎地台面與上一層石屎地台面之高度距離。
7. 部分住宅物業之天花高度將會因結構、建築設計及 / 或裝修設計上的需要而有差異。

BLOCK A A座



Ground Floor Plan
地下樓面平面圖



First Floor Plan
一樓樓面平面圖

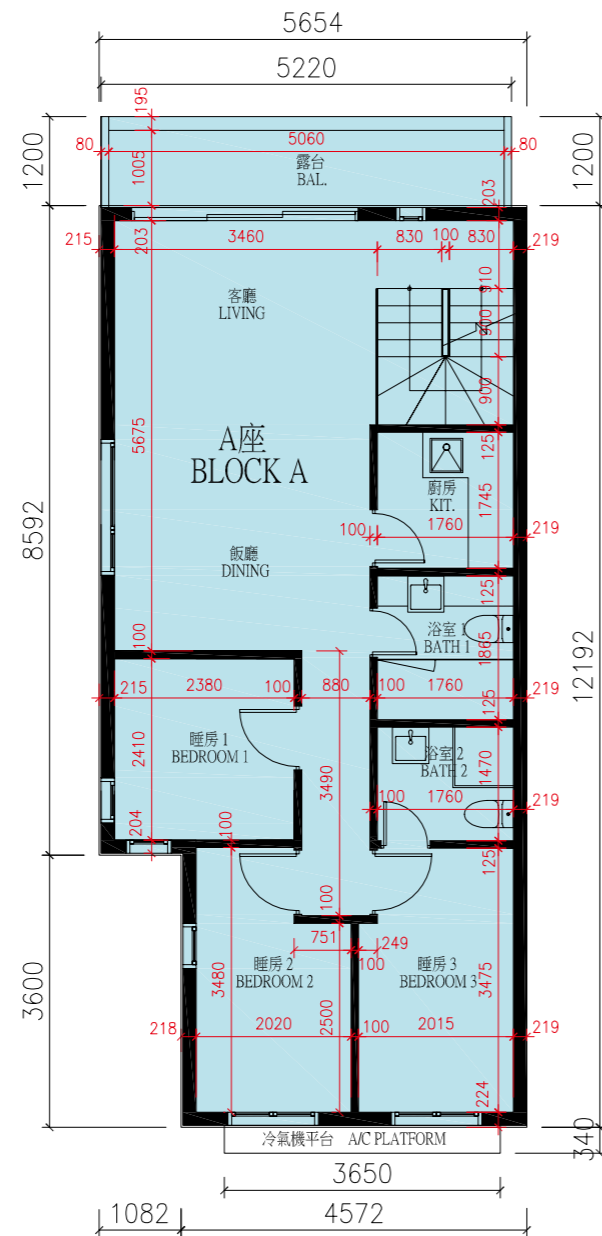
SCALE 比例:
0 5M/米



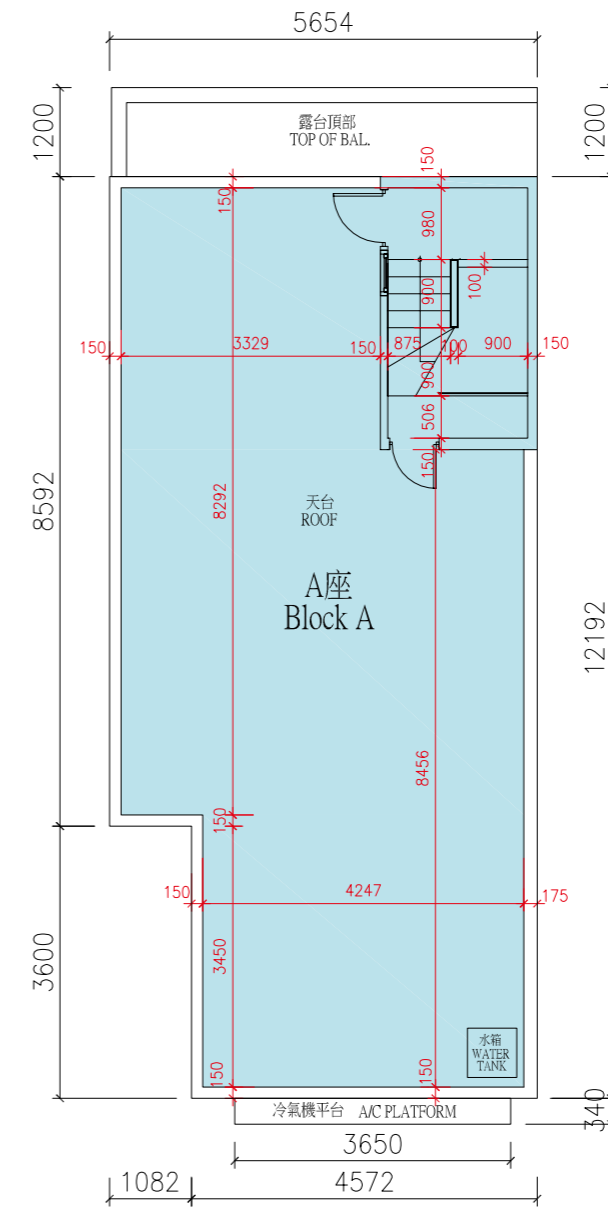
1. The dimensions in the floor plans are all structural dimensions in millimeter.
2. The thickness of the floor slabs (excluding plaster) of each residential property: 160mm.
3. The floor-to-floor height (i.e. the height between the top surface of the structural slab of a floor and the top surface of the structural slab of its immediate upper floor) of each residential property: 2700mm.
4. The internal areas of the residential properties on the upper floors will generally be slightly larger than those on the lower floors because of the reducing thickness of the structural walls on the upper floors. (Note: Not Applicable to this Development)

1. 平面圖所列之尺寸為以毫米標示之建築結構尺寸。
2. 每個住宅物業的樓板 (不包括灰泥) 的厚度: 160 毫米。
3. 每個住宅物業的層與層之間的高度 (指該樓層之石屎地台面與上一層石屎地台面之高度距離): 2700 毫米。
4. 因住宅物業的較高樓層的結構牆的厚度遞減, 較高樓層的內部面積, 一般比較低樓層的內部面積稍大。(註: 不適用於此發展項目)

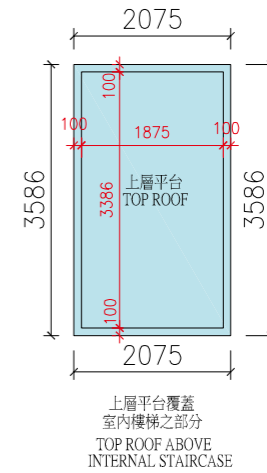
BLOCK A A座



Second Floor Plan
二樓樓面平面圖



Roof Floor Plan
天台樓面平面圖



SCALE 比例:
0 5M/米



1. The dimensions in the floor plans are all structural dimensions in millimeter.
2. The thickness of the floor slabs (excluding plaster) of each residential property: 160mm.
3. The floor-to-floor height (i.e. the height between the top surface of the structural slab of a floor and the top surface of the structural slab of its immediate upper floor) of each residential property: 2700mm.
4. The internal areas of the residential properties on the upper floors will generally be slightly larger than those on the lower floors because of the reducing thickness of the structural walls on the upper floors. (Note: Not Applicable to this Development)

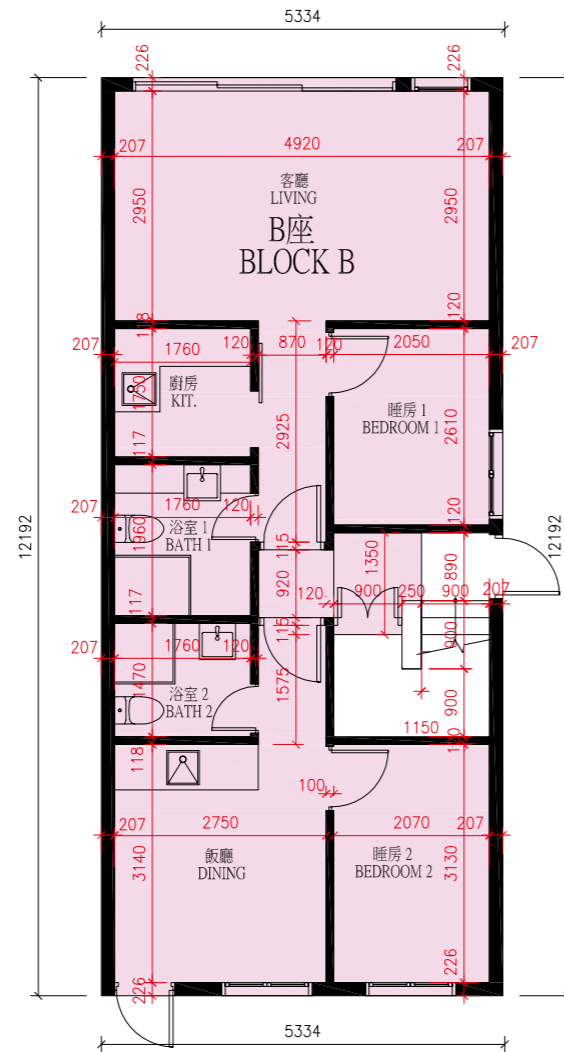
1. 平面圖所列之尺寸為以毫米標示之建築結構尺寸。
2. 每個住宅物業的樓板 (不包括灰泥) 的厚度: 160 毫米。
3. 每個住宅物業的層與層之間的高度 (指該樓層之石屎地台面與上一層石屎地台面之高度距離): 2700 毫米。
4. 因住宅物業的較高樓層的結構牆的厚度遞減, 較高樓層的內部面積, 一般比較低樓層的內部面積稍大。(註: 不適用於此發展項目)



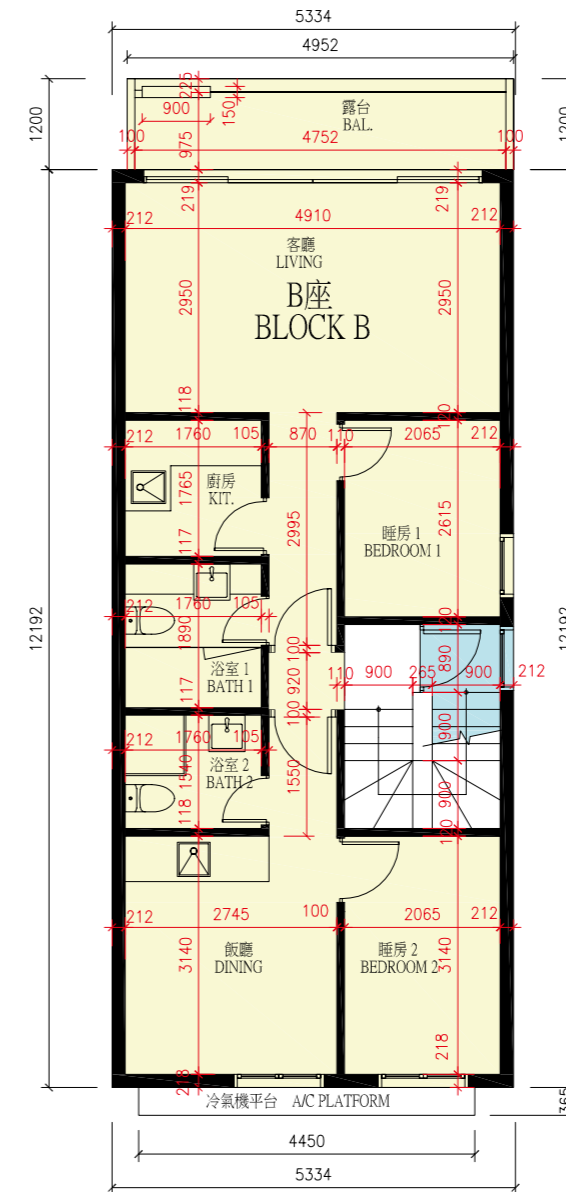
FLOOR PLANS OF RESIDENTIAL PROPERTIES IN THE DEVELOPMENT

發展項目的住宅物業的樓面平面圖

BLOCK B B座



Ground Floor Plan
地下樓面平面圖



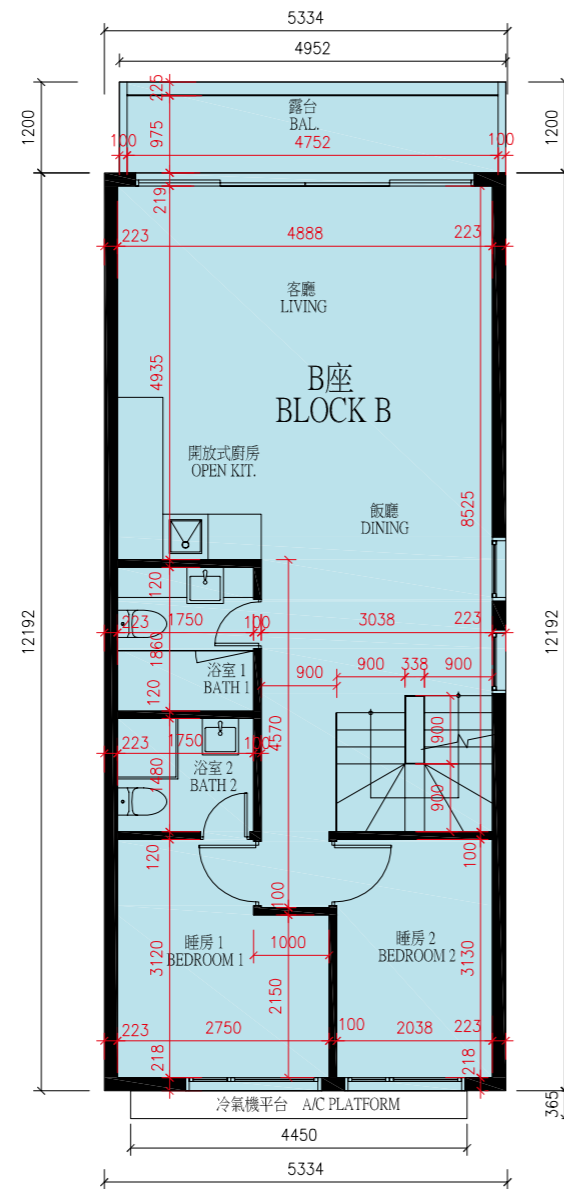
First Floor Plan
一樓樓面平面圖



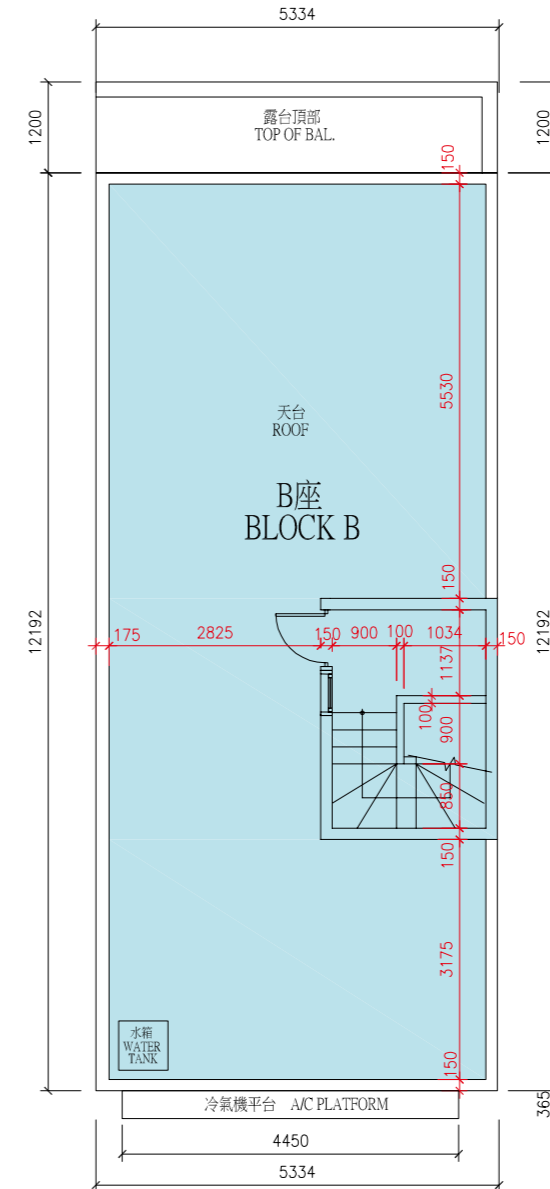
1. The dimensions in the floor plans are all structural dimensions in millimeter.
2. The thickness of the floor slabs (excluding plaster) of each residential property: 160mm.
3. The floor-to-floor height (i.e. the height between the top surface of the structural slab of a floor and the top surface of the structural slab of its immediate upper floor) of each residential property: 2700mm.
4. The internal areas of the residential properties on the upper floors will generally be slightly larger than those on the lower floors because of the reducing thickness of the structural walls on the upper floors. (Note: Not Applicable to this Development)

1. 平面圖所列之尺寸為以毫米標示之建築結構尺寸。
2. 每個住宅物業的樓板 (不包括灰泥) 的厚度: 160 毫米。
3. 每個住宅物業的層與層之間的高度 (指該樓層之石屎地台面與上一層石屎地台面之高度距離): 2700 毫米。
4. 因住宅物業的較高樓層的結構牆的厚度遞減, 較高樓層的內部面積, 一般比較低樓層的內部面積稍大。(註: 不適用於此發展項目)

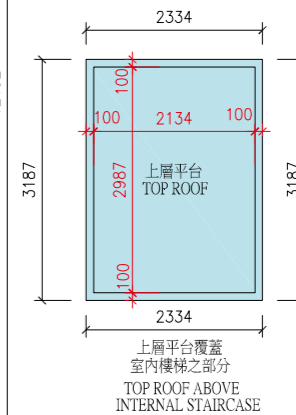
BLOCK B B座



Second Floor Plan
二樓樓面平面圖



Roof Floor Plan
天台樓面平面圖



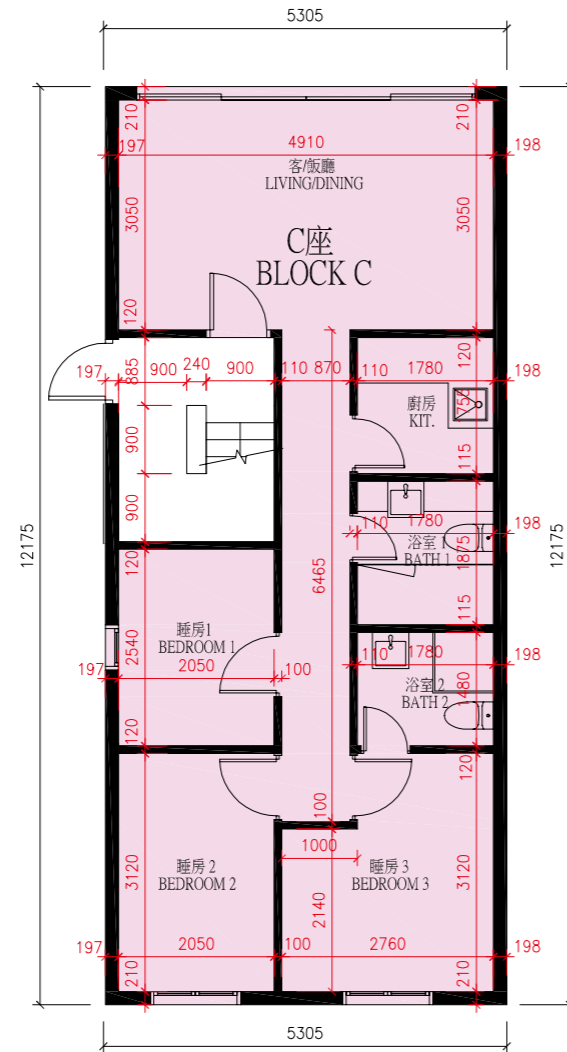
SCALE 比例:
0 5M/米



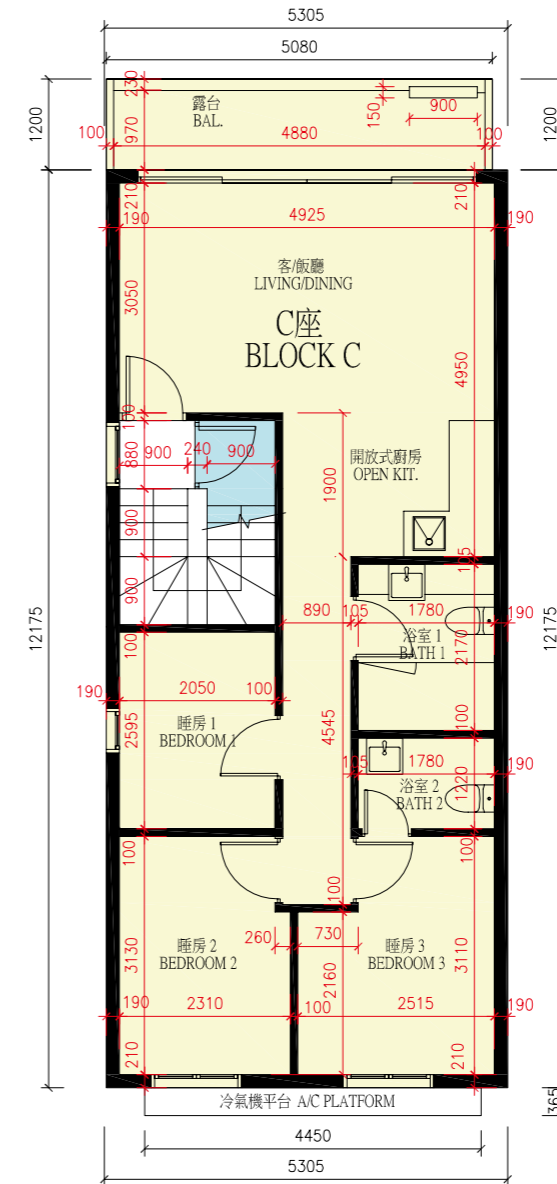
1. The dimensions in the floor plans are all structural dimensions in millimeter.
2. The thickness of the floor slabs (excluding plaster) of each residential property: 160mm.
3. The floor-to-floor height (i.e. the height between the top surface of the structural slab of a floor and the top surface of the structural slab of its immediate upper floor) of each residential property: 2700mm.
4. The internal areas of the residential properties on the upper floors will generally be slightly larger than those on the lower floors because of the reducing thickness of the structural walls on the upper floors. (Note: Not Applicable to this Development)

1. 平面圖所列之尺寸為以毫米標示之建築結構尺寸。
2. 每個住宅物業的樓板 (不包括灰泥) 的厚度: 160 毫米。
3. 每個住宅物業的層與層之間的高度 (指該樓層之石屎地台面與上一層石屎地台面之高度距離): 2700 毫米。
4. 因住宅物業的較高樓層的結構牆的厚度遞減, 較高樓層的內部面積, 一般比較低樓層的內部面積稍大。(註: 不適用於此發展項目)

BLOCK C C座



Ground Floor Plan
地下樓面平面圖



First Floor Plan
一樓樓面平面圖

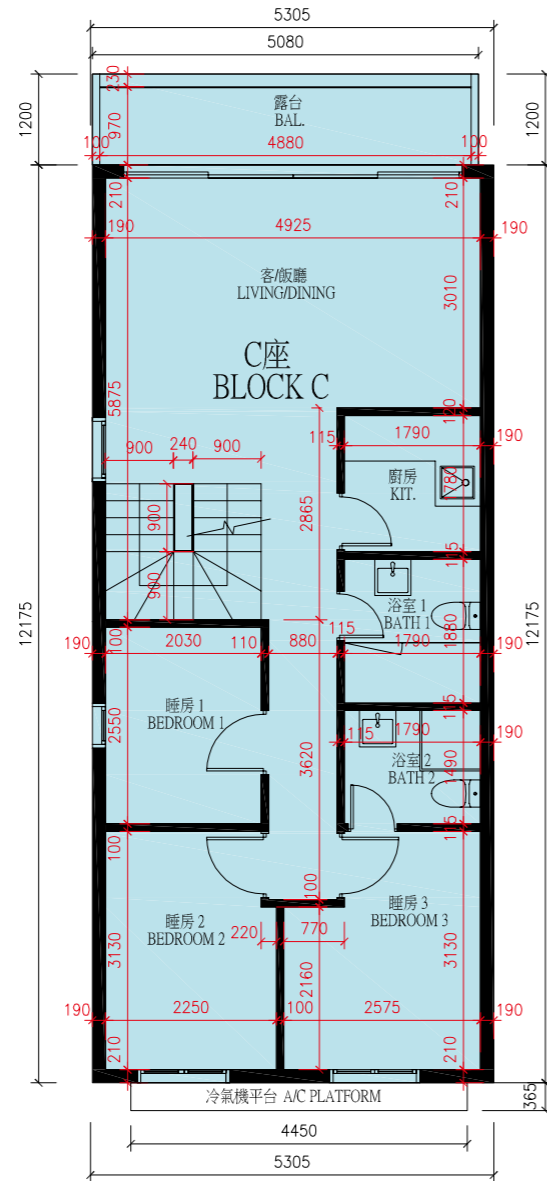
SCALE 比例:
0 5M/米



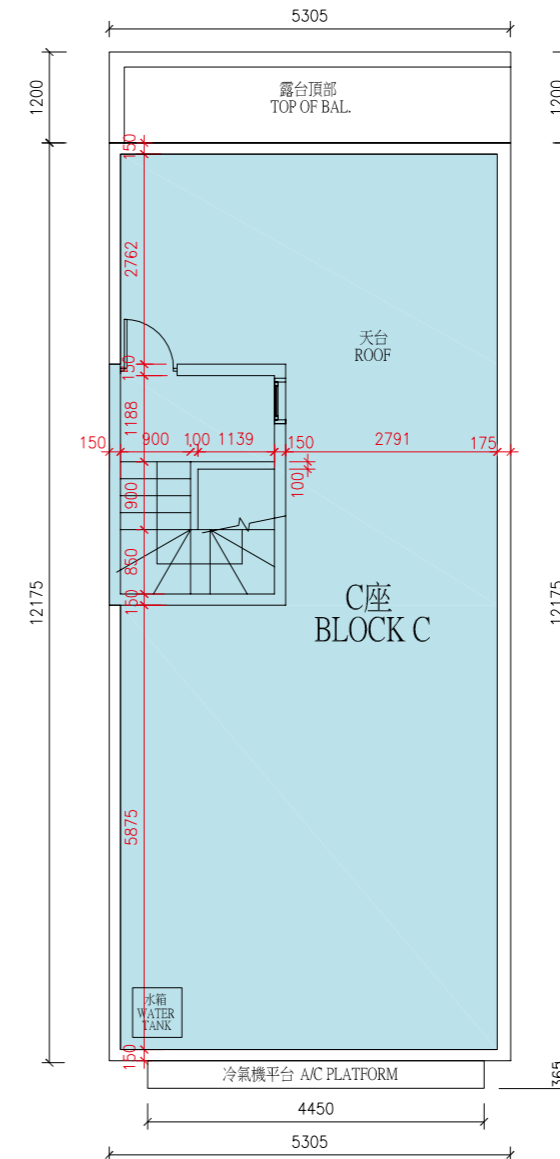
1. The dimensions in the floor plans are all structural dimensions in millimeter.
2. The thickness of the floor slabs (excluding plaster) of each residential property: 160mm.
3. The floor-to-floor height (i.e. the height between the top surface of the structural slab of a floor and the top surface of the structural slab of its immediate upper floor) of each residential property: 2700mm.
4. The internal areas of the residential properties on the upper floors will generally be slightly larger than those on the lower floors because of the reducing thickness of the structural walls on the upper floors. (Note: Not Applicable to this Development)

1. 平面圖所列之尺寸為以毫米標示之建築結構尺寸。
2. 每個住宅物業的樓板 (不包括灰泥) 的厚度: 160 毫米。
3. 每個住宅物業的層與層之間的高度 (指該樓層之石屎地台面與上一層石屎地台面之高度距離): 2700 毫米。
4. 因住宅物業的較高樓層的結構牆的厚度遞減, 較高樓層的內部面積, 一般比較低樓層的內部面積稍大。(註: 不適用於此發展項目)

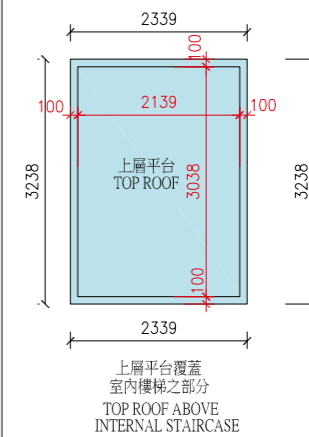
BLOCK C C座



Second Floor Plan
二樓樓面平面圖



Roof Floor Plan
天台樓面平面圖



1. The dimensions in the floor plans are all structural dimensions in millimeter.
2. The thickness of the floor slabs (excluding plaster) of each residential property: 160mm.
3. The floor-to-floor height (i.e. the height between the top surface of the structural slab of a floor and the top surface of the structural slab of its immediate upper floor) of each residential property: 2700mm.
4. The internal areas of the residential properties on the upper floors will generally be slightly larger than those on the lower floors because of the reducing thickness of the structural walls on the upper floors. (Note: Not Applicable to this Development)

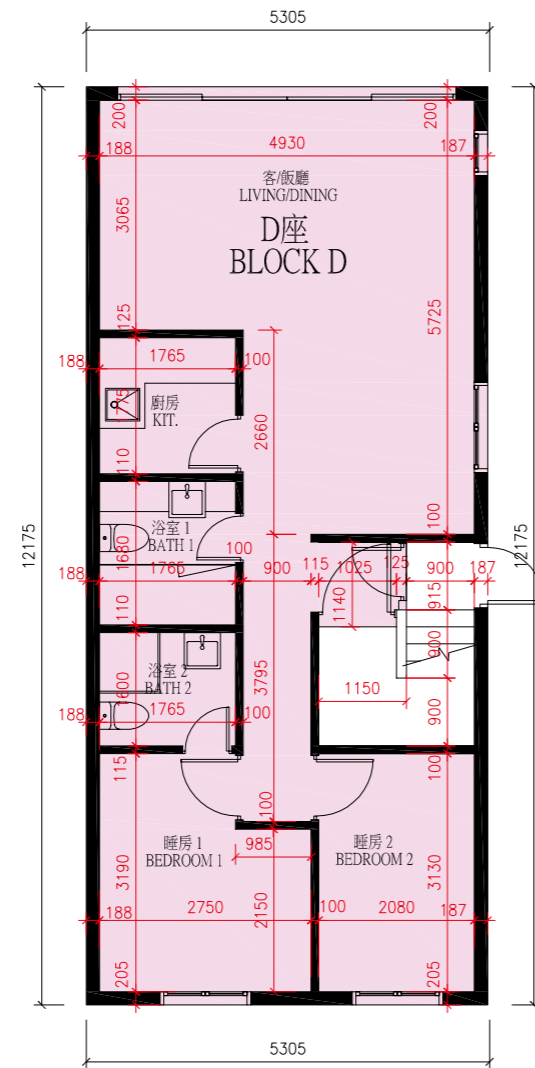
1. 平面圖所列之尺寸為以毫米標示之建築結構尺寸。
2. 每個住宅物業的樓板 (不包括灰泥) 的厚度: 160 毫米。
3. 每個住宅物業的層與層之間的高度 (指該樓層之石屎地台面與上一層石屎地台面之高度距離): 2700 毫米。
4. 因住宅物業的較高樓層的結構牆的厚度遞減, 較高樓層的內部面積, 一般比較低樓層的內部面積稍大。(註: 不適用於此發展項目)



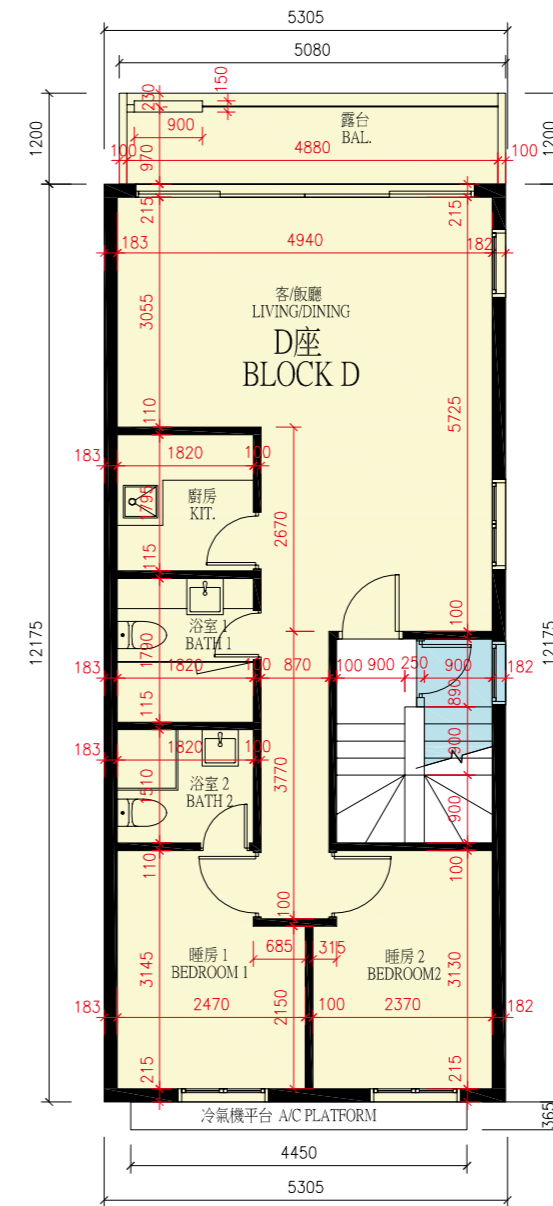
FLOOR PLANS OF RESIDENTIAL PROPERTIES IN THE DEVELOPMENT

發展項目的住宅物業的樓面平面圖

BLOCK D D座



Ground Floor Plan
地下樓面平面圖



First Floor Plan
一樓樓面平面圖

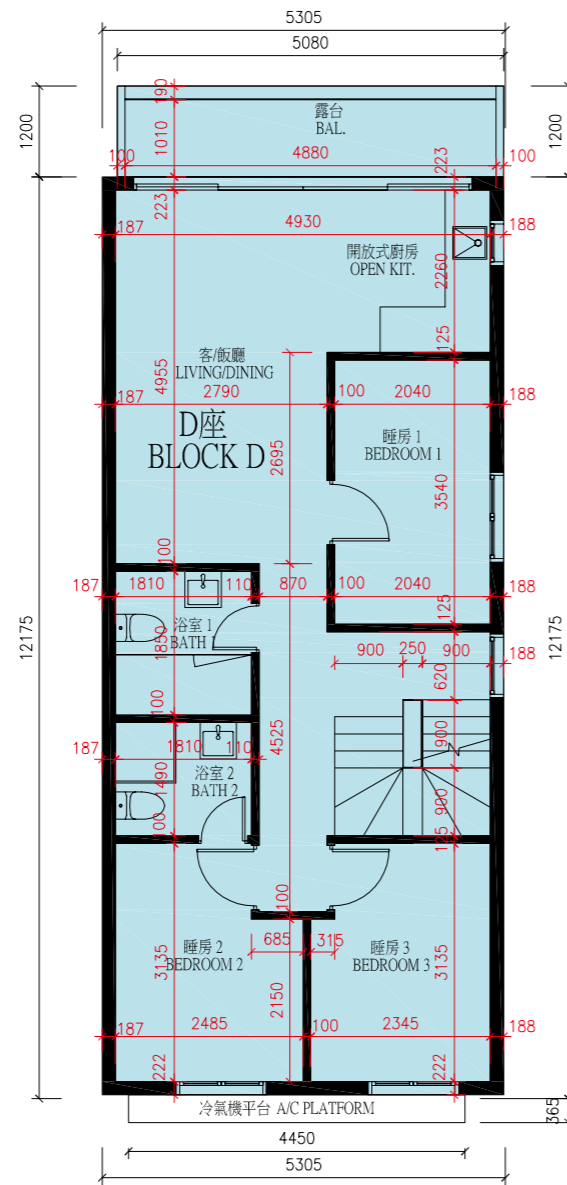
SCALE 比例:



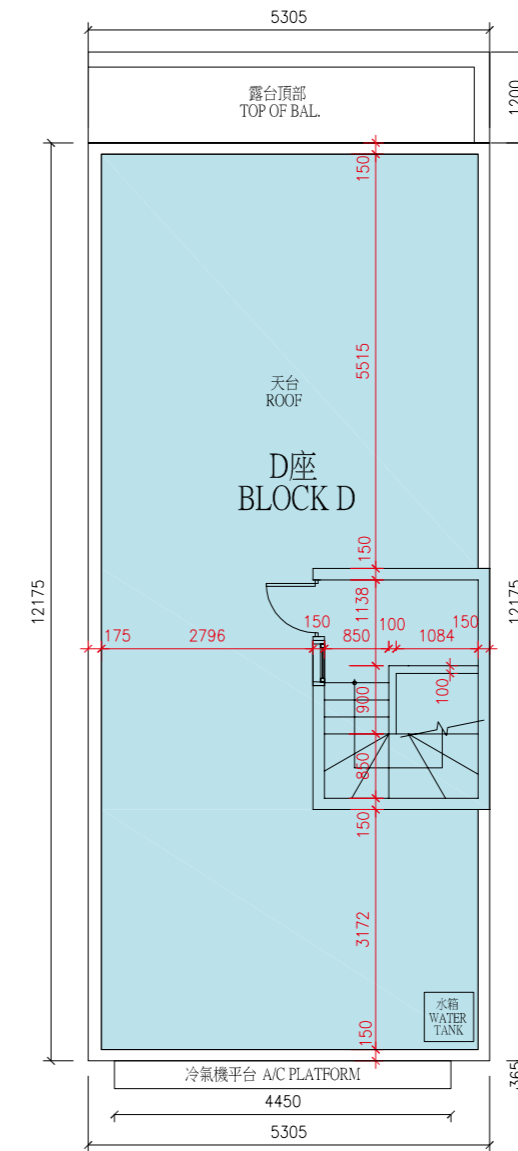
1. The dimensions in the floor plans are all structural dimensions in millimeter.
2. The thickness of the floor slabs (excluding plaster) of each residential property: 160mm.
3. The floor-to-floor height (i.e. the height between the top surface of the structural slab of a floor and the top surface of the structural slab of its immediate upper floor) of each residential property: 2700mm.
4. The internal areas of the residential properties on the upper floors will generally be slightly larger than those on the lower floors because of the reducing thickness of the structural walls on the upper floors. (Note: Not Applicable to this Development)

1. 平面圖所列之尺寸為以毫米標示之建築結構尺寸。
2. 每個住宅物業的樓板 (不包括灰泥) 的厚度: 160 毫米。
3. 每個住宅物業的層與層之間的高度 (指該樓層之石屎地台面與上一層石屎地台面之高度距離): 2700 毫米。
4. 因住宅物業的較高樓層的結構牆的厚度遞減, 較高樓層的內部面積, 一般比較低樓層的內部面積稍大。(註: 不適用於此發展項目)

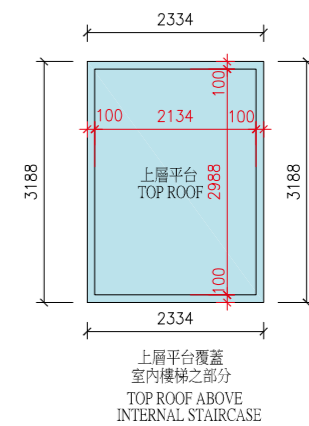
BLOCK D D座



Second Floor Plan
二樓樓面平面圖



Roof Floor Plan
天台樓面平面圖



上層平台覆蓋
室內樓梯之部分
TOP ROOF ABOVE
INTERNAL STAIRCASE



SCALE 比例:



1. The dimensions in the floor plans are all structural dimensions in millimeter.
2. The thickness of the floor slabs (excluding plaster) of each residential property: 160mm.
3. The floor-to-floor height (i.e. the height between the top surface of the structural slab of a floor and the top surface of the structural slab of its immediate upper floor) of each residential property: 2700mm.
4. The internal areas of the residential properties on the upper floors will generally be slightly larger than those on the lower floors because of the reducing thickness of the structural walls on the upper floors. (Note: Not Applicable to this Development)

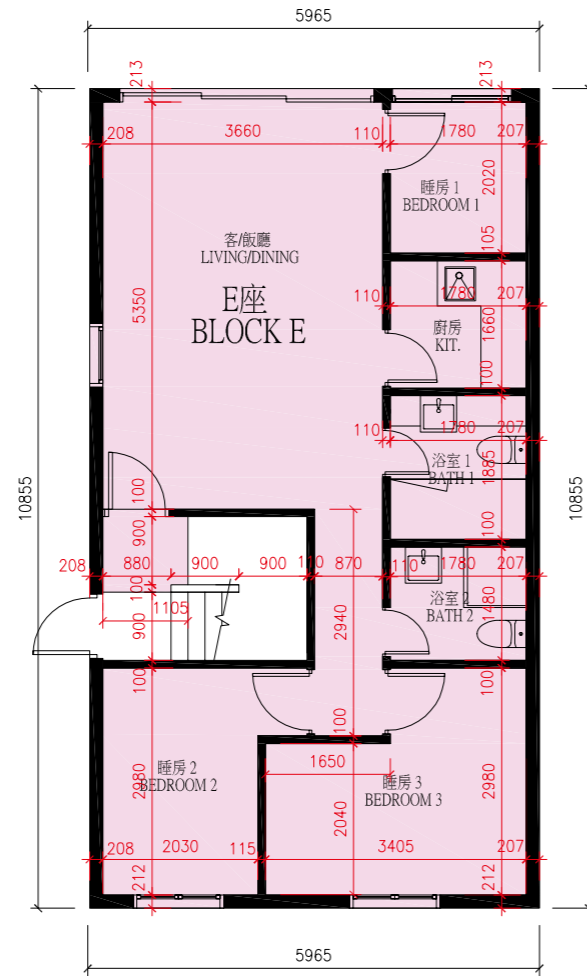
1. 平面圖所列之尺寸為以毫米標示之建築結構尺寸。
2. 每個住宅物業的樓板 (不包括灰泥) 的厚度: 160 毫米。
3. 每個住宅物業的層與層之間的高度 (指該樓層之石屎地台面與上一層石屎地台面之高度距離): 2700 毫米。
4. 因住宅物業的較高樓層的結構牆的厚度遞減, 較高樓層的內部面積, 一般比較低樓層的內部面積稍大。(註: 不適用於此發展項目)



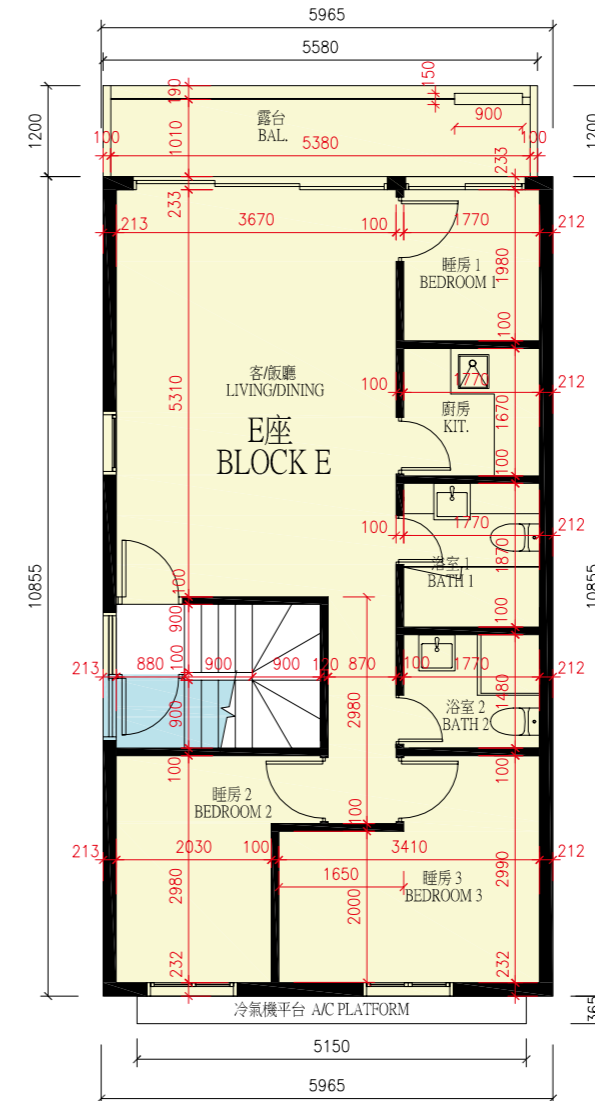
FLOOR PLANS OF RESIDENTIAL PROPERTIES IN THE DEVELOPMENT

發展項目的住宅物業的樓面平面圖

BLOCK E E座



Ground Floor Plan
地下樓面平面圖



First Floor Plan
一樓樓面平面圖



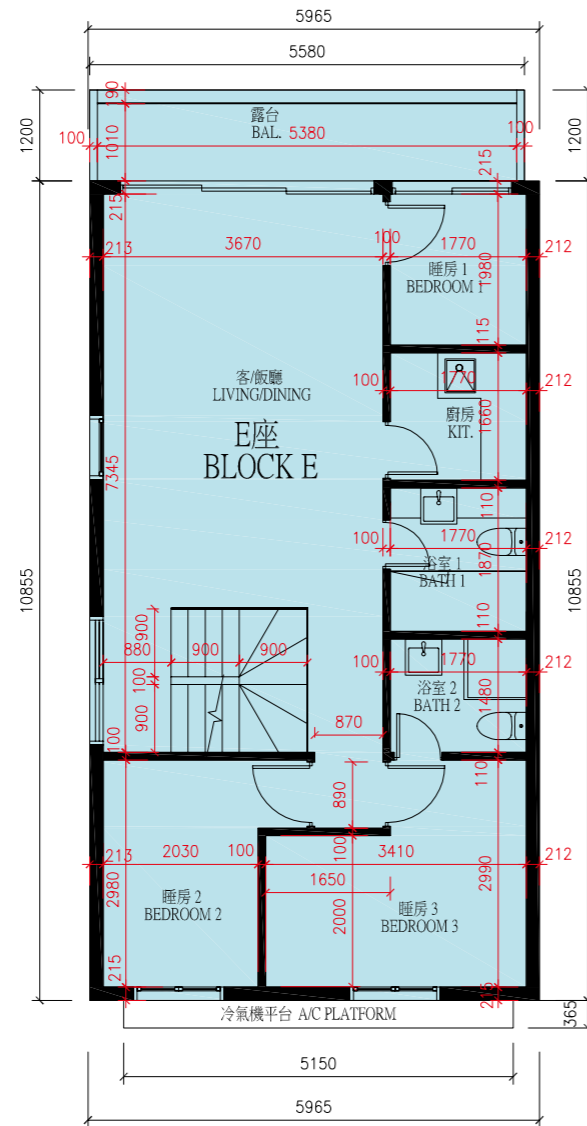
SCALE 比例:



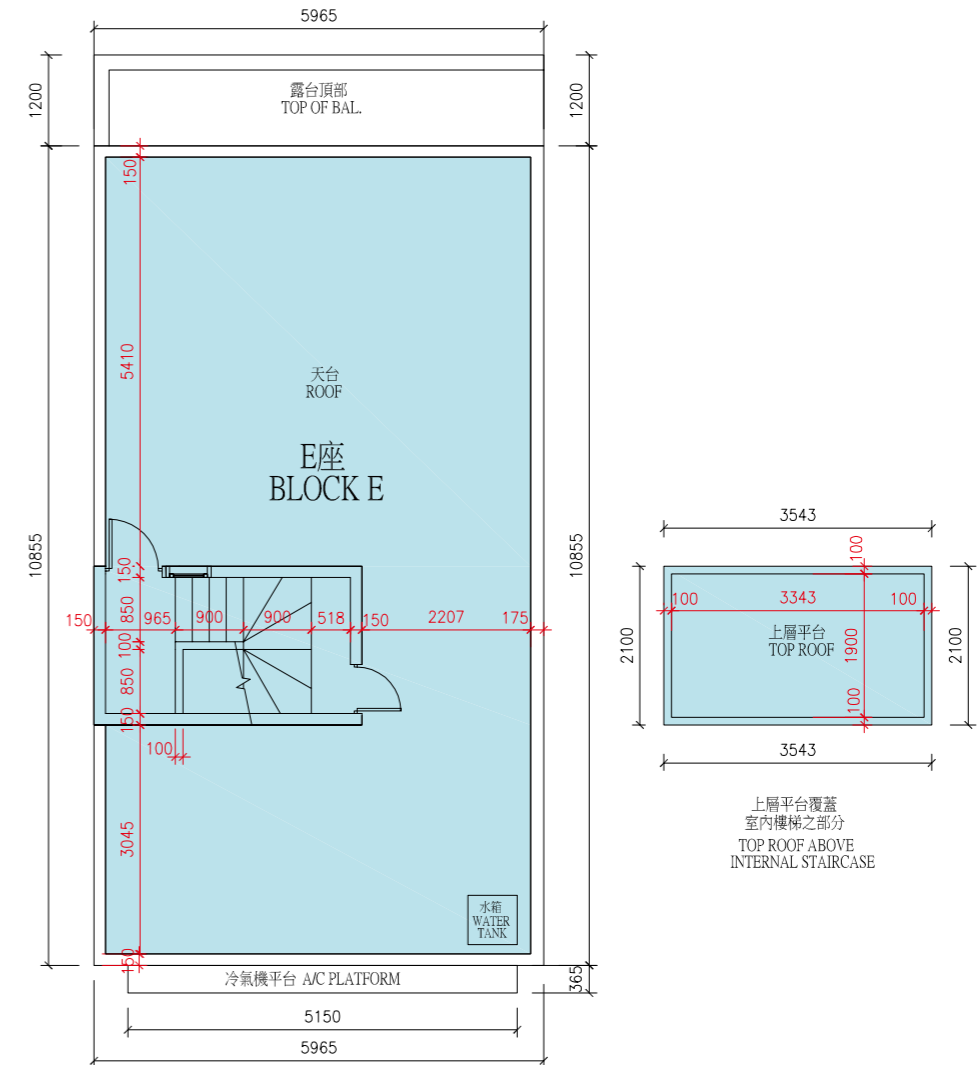
1. The dimensions in the floor plans are all structural dimensions in millimeter.
2. The thickness of the floor slabs (excluding plaster) of each residential property: 160mm.
3. The floor-to-floor height (i.e. the height between the top surface of the structural slab of a floor and the top surface of the structural slab of its immediate upper floor) of each residential property: 2700mm.
4. The internal areas of the residential properties on the upper floors will generally be slightly larger than those on the lower floors because of the reducing thickness of the structural walls on the upper floors. (Note: Not Applicable to this Development)

1. 平面圖所列之尺寸為以毫米標示之建築結構尺寸。
2. 每個住宅物業的樓板 (不包括灰泥) 的厚度: 160 毫米。
3. 每個住宅物業的層與層之間的高度 (指該樓層之石屎地台面與上一層石屎地台面之高度距離): 2700 毫米。
4. 因住宅物業的較高樓層的結構牆的厚度遞減, 較高樓層的內部面積, 一般比較低樓層的內部面積稍大。(註: 不適用於此發展項目)

BLOCK E E座



Second Floor Plan
二樓樓面平面圖



Roof Floor Plan
天台樓面平面圖

SCALE 比例:
0 5M/米



1. The dimensions in the floor plans are all structural dimensions in millimeter.
2. The thickness of the floor slabs (excluding plaster) of each residential property: 160mm.
3. The floor-to-floor height (i.e. the height between the top surface of the structural slab of a floor and the top surface of the structural slab of its immediate upper floor) of each residential property: 2700mm.
4. The internal areas of the residential properties on the upper floors will generally be slightly larger than those on the lower floors because of the reducing thickness of the structural walls on the upper floors. (Note: Not Applicable to this Development)

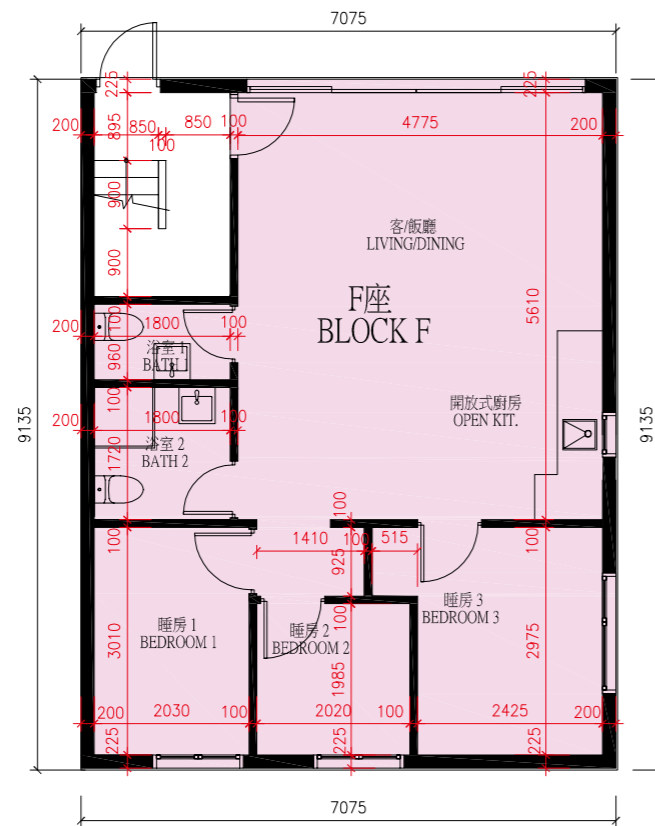
1. 平面圖所列之尺寸為以毫米標示之建築結構尺寸。
2. 每個住宅物業的樓板 (不包括灰泥) 的厚度: 160 毫米。
3. 每個住宅物業的層與層之間的高度 (指該樓層之石屎地台面與上一層石屎地台面之高度距離): 2700 毫米。
4. 因住宅物業的較高樓層的結構牆的厚度遞減, 較高樓層的內部面積, 一般比較低樓層的內部面積稍大。(註: 不適用於此發展項目)



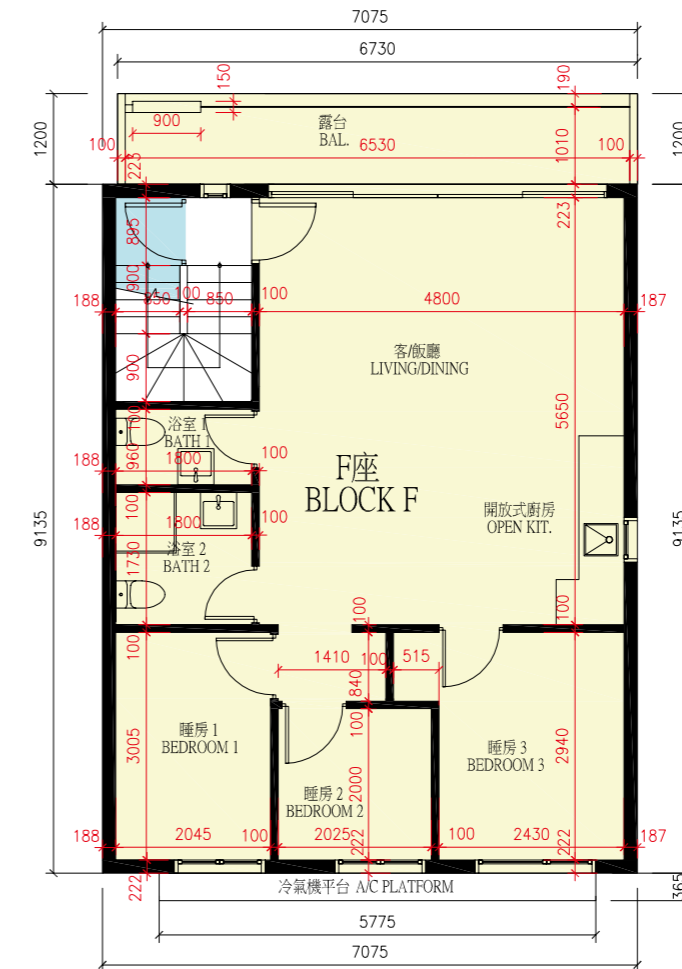
FLOOR PLANS OF RESIDENTIAL PROPERTIES IN THE DEVELOPMENT

發展項目的住宅物業的樓面平面圖

BLOCK F F座



Ground Floor Plan
地下樓面平面圖



First Floor Plan
一樓樓面平面圖



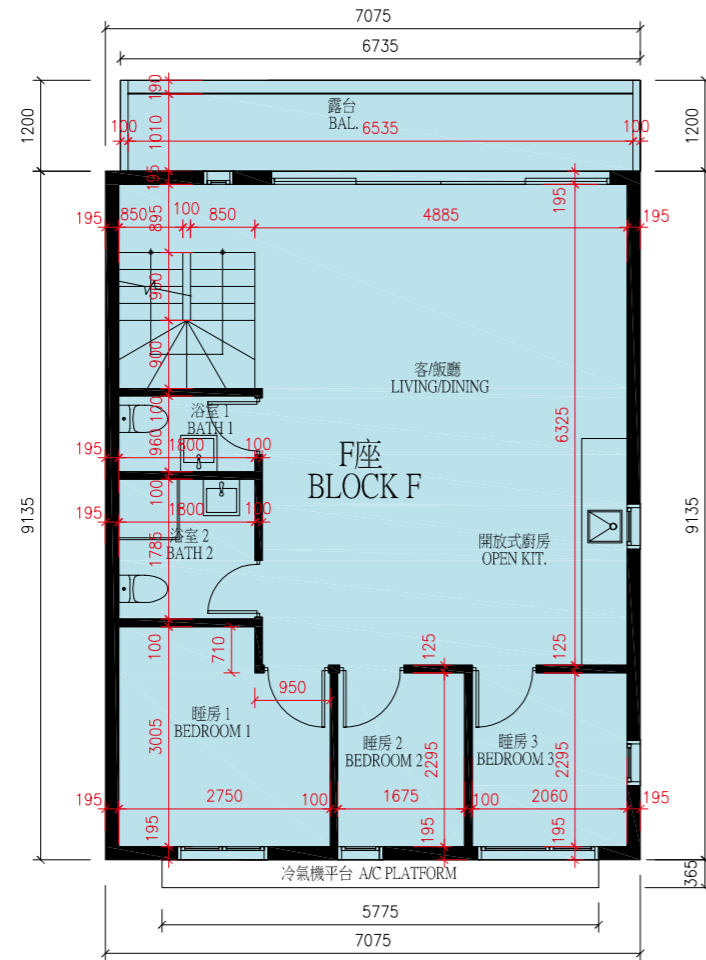
SCALE 比例:



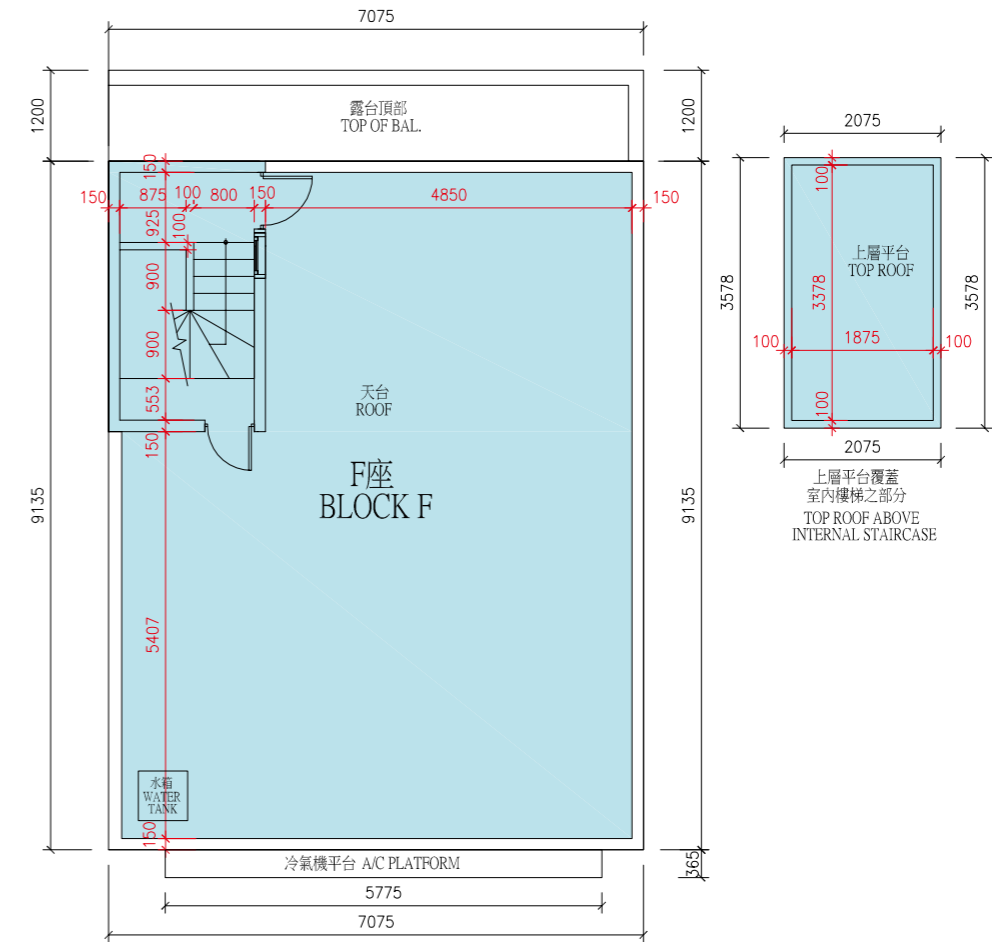
1. The dimensions in the floor plans are all structural dimensions in millimeter.
2. The thickness of the floor slabs (excluding plaster) of each residential property: 160mm.
3. The floor-to-floor height (i.e. the height between the top surface of the structural slab of a floor and the top surface of the structural slab of its immediate upper floor) of each residential property: 2700mm.
4. The internal areas of the residential properties on the upper floors will generally be slightly larger than those on the lower floors because of the reducing thickness of the structural walls on the upper floors. (Note: Not Applicable to this Development)

1. 平面圖所列之尺寸為以毫米標示之建築結構尺寸。
2. 每個住宅物業的樓板 (不包括灰泥) 的厚度: 160 毫米。
3. 每個住宅物業的層與層之間的高度 (指該樓層之石屎地台面與上一層石屎地台面之高度距離): 2700 毫米。
4. 因住宅物業的較高樓層的結構牆的厚度遞減, 較高樓層的內部面積, 一般比較低樓層的內部面積稍大。(註: 不適用於此發展項目)

BLOCK F F座



Second Floor Plan
二樓樓面平面圖



Roof Floor Plan
天台樓面平面圖



SCALE 比例:
0 5M/米

1. The dimensions in the floor plans are all structural dimensions in millimeter.
2. The thickness of the floor slabs (excluding plaster) of each residential property: 160mm.
3. The floor-to-floor height (i.e. the height between the top surface of the structural slab of a floor and the top surface of the structural slab of its immediate upper floor) of each residential property: 2700mm.
4. The internal areas of the residential properties on the upper floors will generally be slightly larger than those on the lower floors because of the reducing thickness of the structural walls on the upper floors. (Note: Not Applicable to this Development)

1. 平面圖所列之尺寸為以毫米標示之建築結構尺寸。
2. 每個住宅物業的樓板 (不包括灰泥) 的厚度: 160 毫米。
3. 每個住宅物業的層與層之間的高度 (指該樓層之石屎地台面與上一層石屎地台面之高度距離): 2700 毫米。
4. 因住宅物業的較高樓層的結構牆的厚度遞減, 較高樓層的內部面積, 一般比較低樓層的內部面積稍大。(註: 不適用於此發展項目)