

## 發展項目的住宅物業的樓面平面圖

### FLOOR PLANS OF RESIDENTIAL PROPERTIES IN THE DEVELOPMENT

#### 樓面平面圖中所使用名詞及簡稱之圖例

#### Legend of terms and abbreviations used on Floor Plan

ACCESS DOOR	= Access Door	= 檢修門
A/C	= Air Conditioner Platform	= 空調機平台
A/C AREA	= Air Conditioner Area	= 空調機區
A/C PLINTH	= Plinth for Air Conditioner	= 空調機基座
A.F./AF	= Architectural Feature	= 建築裝飾
A.F. FOR R.W.P.	= Architectural Feature for Rainwater Pipe	= 雨水管道槽之建築裝飾
ALUM. FEATURE	= Aluminium Architectural Feature	= 鋁質建築裝飾
BACK FILL WITH LIGHT WEIGHT CONCRETE	= Back fill with light weight concrete	= 輕質混凝土回填
BAL.	= Balcony	= 露台
BAL. & U.P. & A/C PLATFORM AT _/F	= Balcony and Utility Platform and Air Conditioner Platform at _ Floor	= 露台及工作平台及空調機平台位於_樓
BAL. & U.P. & A/C PLATFORM ABOVE	= Balcony and Utility Platform and Air Conditioner Platform Above	= 露台及工作平台及空調機平台置上
BATH	= Bathroom	= 浴室
BED 1	= Bedroom 1	= 睡房 1
BED 2	= Bedroom 2	= 睡房 2
COMMON AREA FOR MAINTENANCE	= Common Area for Maintenance	= 公用維修空間
COMMON FLAT ROOF	= Common Flat Roof	= 公用平台
COMMON FLAT ROOF FOR OUTDOOR VRV FOR RRF	= Common Flat Roof for Outdoor Variable Refrigerant Volume for Residential Recreational Facilities	= 公用平台供康樂設施的室外空調機
CURTAIN WALL BELOW	= Curtain Wall Below	= 下層玻璃幕牆
COVER OF BAL. & U.P. & A/C PLATFORM BELOW	= Cover of Balcony and Utility Platform and Air Conditioner Platform Below	= 遮蓋下層露台及工作平台及空調機平台之結構
DN	= Down	= 落
DIN	= Dining Room	= 飯廳
E.L./ELE.	= Electrical Duct	= 電線槽
E.L.V./ELV.	= Extra Low Voltage Electrical Room	= 特低壓電線房
E.M.C.	= Electrical Meter Cabinet	= 電錶櫃

## 發展項目的住宅物業的樓面平面圖

### FLOOR PLANS OF RESIDENTIAL PROPERTIES IN THE DEVELOPMENT

#### 樓面平面圖中所使用名詞及簡稱之圖例

#### Legend of terms and abbreviations used on Floor Plan

E.M.R.	= Electrical Meter Room	= 電錶房
EAD/E.A.D.	= Exhaust Air Duct	= 排氣管
FLAT ROOF	= Flat Roof	= 平台
FLAT ROOF BELOW AT _/F	= Flat Roof Below at _Floor	= 下層平台位於 _樓
F.S. WATER TANK (TOWER _)/ F.S. WATER TANK (TOWER _ & PODIUM)	= Fire Service Water Tank (Tower _)/ Fire Service Water Tank (Tower _ & Podium)	= 消防水缸 (第_座)/消防水缸(第_座及基座)
F.S. WATER TANK RM. (TOWER _)/ F.S. WATER TANK RM. (TOWER _ & PODIUM)	= Fire Service Water Tank Room (Tower _)/ Fire Service Water Tank Room (Tower _ & Podium)	= 消防水缸房 (第_座)/消防水缸房(第_座及基座)
FAN ROOM	= Fan Room	= 風機房
F.S.	= Fire Service Pipe Duct	= 消防管道槽
H.R./HR	= Hose Reel	= 消防喉轆
KIT.	= Kitchen	= 廚房
LAV	= Lavatory	= 洗手間
LIFT	= Lift	= 升降機
LIFT LOBBY	= Lift Lobby	= 升降機大堂
LIFT LOBBY TOWER 1(1A)	= Lift Lobby Tower 1(1A)	= 第1座(1A)升降機大堂
LIFT LOBBY TOWER 1(1B)	= Lift Lobby Tower 1(1B)	= 第1座(1B)升降機大堂
LIFT SHAFT	= Lift Shaft	= 升降機槽
LIV	= Living Room	= 客廳
M. BATH	= Master Bathroom	= 主人浴室
M. BED	= Master Bedroom	= 主人睡房
M.L. AT H/L	= Metal Louvre at High Level	= 金屬百葉設於高位
OPEN KIT.	= Open Kitchen	= 開放式廚房
P.D.	= Pipe Duct	= 管道槽
POTABLE WATER TANK	= Potable Water Tank	= 食水水缸
POTABLE WATER PUMP RM./ROOM	= Potable Water Pump Room	= 食水泵房

## 發展項目的住宅物業的樓面平面圖

### FLOOR PLANS OF RESIDENTIAL PROPERTIES IN THE DEVELOPMENT

#### 樓面平面圖中所使用名詞及簡稱之圖例

#### Legend of terms and abbreviations used on Floor Plan

PROTECTED CORRIDOR	= Protected Corridor	= 防護走廊
PROTECTED LOBBY	= Protected Lobby	= 防護門廊
R.C. FEATURE	= Reinforced Concrete Feature	= 鋼筋混凝土裝飾
R.C. FEATURE AT 3/F AND ABOVE	= Reinforced Concrete Feature at 3/F and Above	= 鋼筋混凝土裝飾於3樓及以上樓層
R.S.M.R.R.	= Refuse Storage and Material Recovery Room	= 垃圾及物料回收室
ROOF (FOR FLAT _ ON _/F)	= Roof (For Flat _on _/F)	= 天台( __單位於__樓)
S.	= Sink	= 洗滌盆
ST.	= Store	= 儲物室
ST	= Stove	= 煮食爐
UP	= Up	= 上
U.P.	= Utility Platform	= 工作平台
UT	= Utility Room	= 工作間
W.M.C.	= Water Meter Cabinet	= 水錶櫃

#### 適用於本節各樓面平面圖之備註：

1. 部分樓層外牆設有建築裝飾及/或外露喉管/管道。詳細資料請參考最新經批准的建築圖則及其他相關圖則。
2. 部分住宅物業的露台及/或平台及/或工作平台及/或空調機平台及/或外牆上/附近設有外露及/或內藏於外牆覆蓋板的公用喉管及/或機電設備。詳細資料請參考最新經批准的建築圖則及/或排水設施圖則。
3. 部分住宅物業的客廳、飯廳、睡房、儲物室、工作間、廚房、浴室、洗手間及/或走廊之天花可能設有假天花及/或跌級樓板用以裝置冷氣系統及/或其他機電設備。
4. 樓面平面圖上所顯示的裝置及設備符號，例如浴缸、淋浴間、洗滌盆、坐廁、花灑、洗滌盆櫃等乃摘錄自最新經批准的建築圖則的建築符號，只作一般性標誌，而非展示其實際大小、設計及形狀。
5. 露台、工作平台及空調機平台為不可封閉的地方。
6. 每一住宅物業的邊界以發展項目公契條款為準。
7. 住宅物業有非結構預製外牆及/或幕牆。住宅物業之實用面積之計算包括非結構預製外牆及幕牆之面積，並由非結構預製外牆及幕牆之外圍起計。

#### Notes applicable to the floor plans in this section:

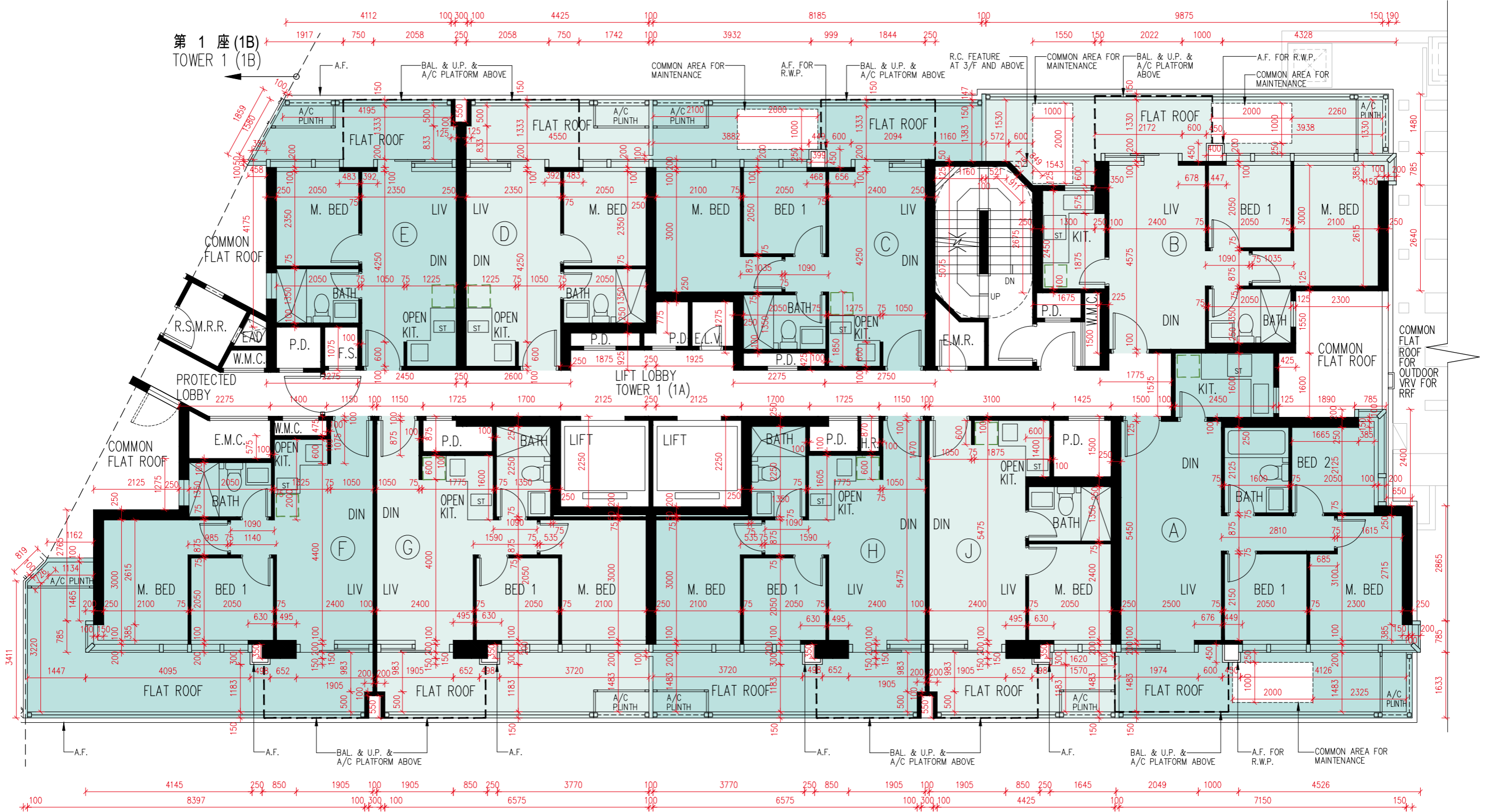
1. There are architectural features and/or exposed pipes/ ducts on the external walls of some of the floors. For details, please refer to the latest approved building plans and other relevant plans.
2. Common pipes and/or mechanical and electrical services exposed and/or enclosed in cladding are located at/ adjacent to the balcony and/or flat roof and/or utility platform and/or air conditioner platform and/or external wall of some residential properties. For details, please refer to the latest approved building plans and/or approved drainage plans.
3. There are ceiling bulkheads and/or sunken slabs on the ceiling at living rooms, dining rooms, bedrooms, store, utility room, kitchen, bathroom, lavatory and/or corridors of some residential properties for the installation of the air-conditioning system and/or other mechanical and electrical services.
4. Symbols of fittings and fitments shown on the floor plans, such as bathtubs, shower cubicle, sink, water closets, shower, sink counter etc. are architectural symbols retrieved from the latest approved building plans and are for general indication only and are not indications of their actual size, designs and shapes.
5. Balconies, utility platforms and air conditioner platforms are non-enclosed areas.
6. The demarcation of each residential property is subject to the provisions of the deed of mutual covenant of the Development.
7. There are non-structural prefabricated external walls and/or curtain walls in the residential properties. The saleable area of a residential property has included the area of non-structural prefabricated external walls and curtain walls and is measured from the exterior of such non-structural prefabricated external walls and curtain walls.

發展項目的住宅物業的樓面平面圖

FLOOR PLANS OF RESIDENTIAL PROPERTIES IN THE DEVELOPMENT

第1座(1A)  
Tower 1 (1A)

2樓  
2/F



圖例 Legend:  
 □ 隨樓附送之嵌入式裝置  
 □ Built-in Fittings Provided in the Flats

比例：0米(M) 5米(M)  
 Scale: 5米(M)

## 發展項目的住宅物業的樓面平面圖

### FLOOR PLANS OF RESIDENTIAL PROPERTIES IN THE DEVELOPMENT

第1座(1A)  
Tower 1 (1A)

2樓  
2/F

描述 Description			每個住宅物業的層與層之間的高度(指該樓層之石屎地台面與上一層石屎地台面之高度距離)(毫米) The floor-to-floor height (refers to the height between the top surface of the structural slab of a floor and the top surface of the structural slab of its immediate upper floor) of each residential property (mm)	每個住宅物業的樓板(不包括灰泥)的厚度(毫米) The thickness of the floor slabs (excluding plaster) of each residential property (mm)
座 Tower	樓層 Floor	單位 Unit		
第1座(1A) Tower 1 (1A)	2樓 2/F	A	3650*, 3800*, 4000*	150, 200
		B	3600*, 3700*, 3800*, 3925*, 4000*	150, 200
		C	3450*, 3650*, 3800*, 3925*, 4000*	150
		D	3500*, 3600*, 3650*, 3700*, 3800*, 3925*, 4000*	150
		E	3450*, 3500*, 3600*, 3650*, 3700*, 3800*, 3925*, 4000*	150
		F	3450*, 3500*, 3600*, 3650*, 3700*, 3725*, 3800*, 3925*, 4000*	150, 175, 200
		G	3600*, 3650*, 3800*, 3925*, 4000*	150, 175, 200
		H	3600*, 3650*, 3800*, 3925*, 4000*	150, 200
		J	3600*, 3650*, 3800*, 3925*, 4000*	150, 200

\*包括跌級樓板上之混凝土填充層厚度

\*Inclusive of the thickness of mass concrete fill on sunken slab

因住宅物業的較高樓層的結構牆的厚度遞減，較高樓層的內部面積，一般比較低樓層的內部面積稍大。  
(不適用於本發展項目)

The internal areas of the residential properties on the upper floors will generally be slightly larger than those on the lower floors because of the reducing thickness of the structural walls on the upper floors. (Not Applicable to the Development)

備註：

Notes:

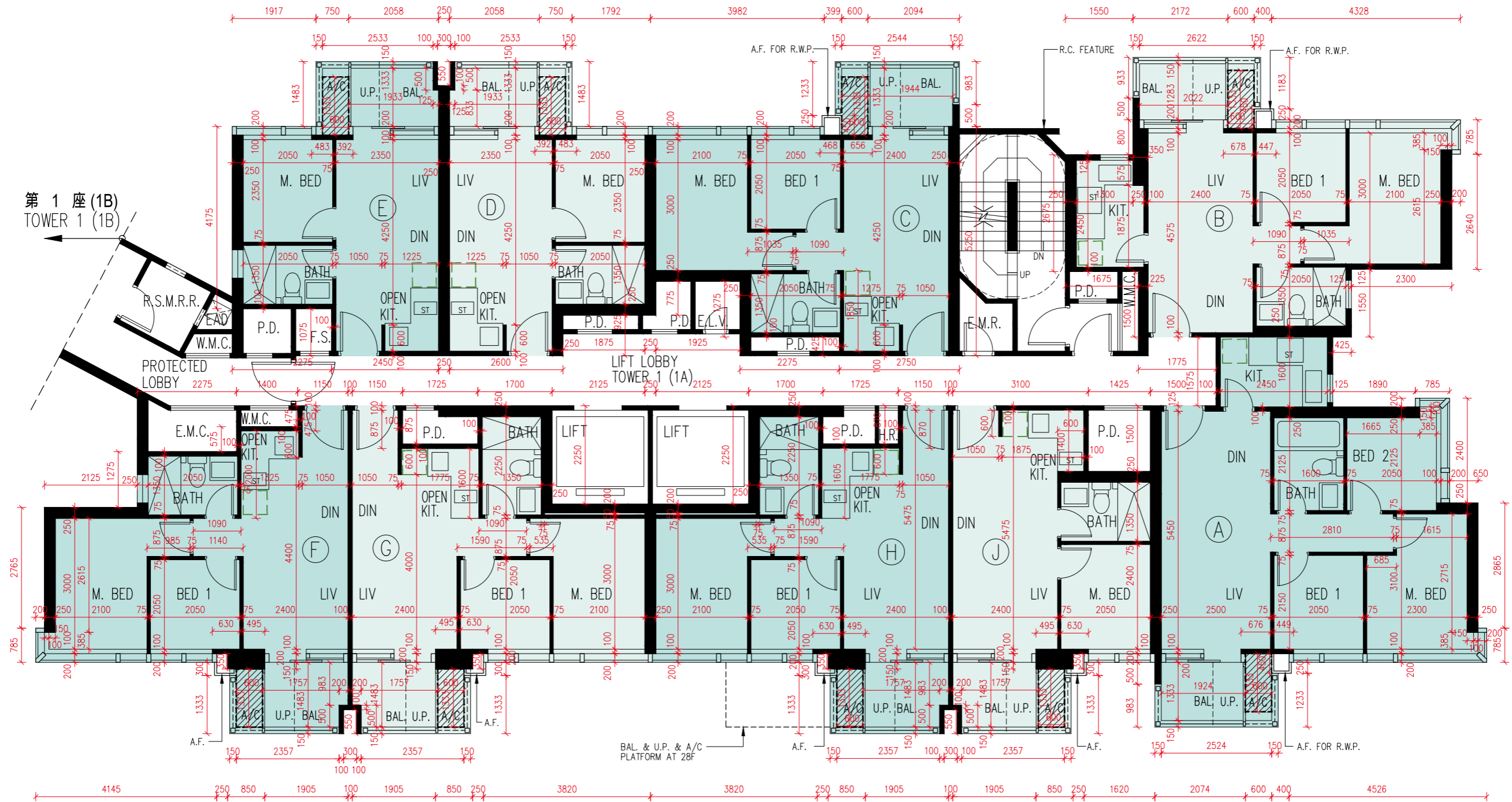
- 住宅物業之天花高度將會因應其結構、建築及/或裝修設計上的差異而有所不同。
- 樓面平面圖之尺規所列數字為以毫米標示之建築結構尺寸。
- 請參閱本售樓說明書第21至23頁之圖例以協助閱讀樓面平面圖之名稱和簡稱。

- The internal ceiling height within residential properties may vary due to structural, architectural and/or decoration design variations.
- The dimensions in the floor plans are all structural dimensions in millimetre.
- Please refer to pages 21 to 23 of this sales brochure for legend of the terms and abbreviations in studying the floor plans.

發展項目的住宅物業的樓面平面圖  
 FLOOR PLANS OF RESIDENTIAL PROPERTIES IN THE DEVELOPMENT

第1座(1A)  
 Tower 1 (1A)

3樓、5樓至12樓、15樓至23樓及25樓至27樓  
 3/F, 5/F-12/F, 15/F-23/F and 25/F-27/F



圖例 Legend:  
 □ 隨樓附送之嵌入式裝置  
 □ Built-in Fittings Provided in the Flats

比例：0米(M) 5米(M)  
 Scale: 5米(M)

## 發展項目的住宅物業的樓面平面圖

### FLOOR PLANS OF RESIDENTIAL PROPERTIES IN THE DEVELOPMENT

第1座(1A)  
Tower 1 (1A)

3樓、5樓至12樓、15樓至23樓及25樓至27樓  
3/F, 5/F-12/F, 15/F-23/F and 25/F-27/F

描述 Description			每個住宅物業的層與層之間的高度(指該樓層之石屎地台面與上一層石屎地台面之高度距離)(毫米) The floor-to-floor height (refers to the height between the top surface of the structural slab of a floor and the top surface of the structural slab of its immediate upper floor) of each residential property (mm)	每個住宅物業的樓板(不包括灰泥)的厚度(毫米) The thickness of the floor slabs (excluding plaster) of each residential property (mm)
座 Tower	樓層 Floor	單位 Unit		
第1座(1A) Tower 1 (1A)	3樓、5樓至12樓、15樓至23樓及25樓至26樓 3/F, 5/F-12/F, 15/F-23/F and 25/F-26/F	A	3500, 3500*	150, 200
		B	3500, 3500*	150, 200
		C	3500, 3500*	150
		D	3500, 3500*	150
		E	3500, 3500*	150
		F	3500, 3500*	150, 175, 200
		G	3500, 3500*	150, 175, 200
		H	3500, 3500*	150, 200
		J	3500, 3500*	150, 200
	27樓 27/F	A	3700, 3750, 4000, 4050*, 4350*	150, 200, 400
		B	3650, 3700, 3750, 3775*, 4000, 4100*, 4300*	150, 200, 350, 400
		C	3650, 3675*, 3925, 3950*, 4000, 4000*, 4075*, 4350*	150
		D	3700, 3750, 3750*, 4000, 4000*, 4075*, 4350*	150
		E	3650, 3700, 3750, 3750*, 3775*, 4000, 4000*, 4050*, 4350*	150, 400
		F	3700, 3750, 3750*, 3775*, 4000, 4000*, 4050*, 4075*, 4350*	150, 200
		G	3600, 3650, 3675*, 3700, 3750, 3750*, 3925, 3950*, 4000, 4075*, 4350*	150, 175, 200
		H	3650, 3950*, 4000, 4000*, 4075*, 4200*, 4350*	150, 200, 350, 400, 600
		J	3600, 3650, 3750, 3925, 3950*, 4000, 4000*, 4075*, 4200*, 4350*	150, 200, 350

\*包括跌級樓板上之混凝土填充層厚度

\*Inclusive of the thickness of mass concrete fill on sunken slab

因住宅物業的較高樓層的結構牆的厚度遞減，較高樓層的內部面積，一般比較低樓層的內部面積稍大。  
(不適用於本發展項目)

The internal areas of the residential properties on the upper floors will generally be slightly larger than those on the lower floors because of the reducing thickness of the structural walls on the upper floors. (Not Applicable to the Development)

備註：

Notes:

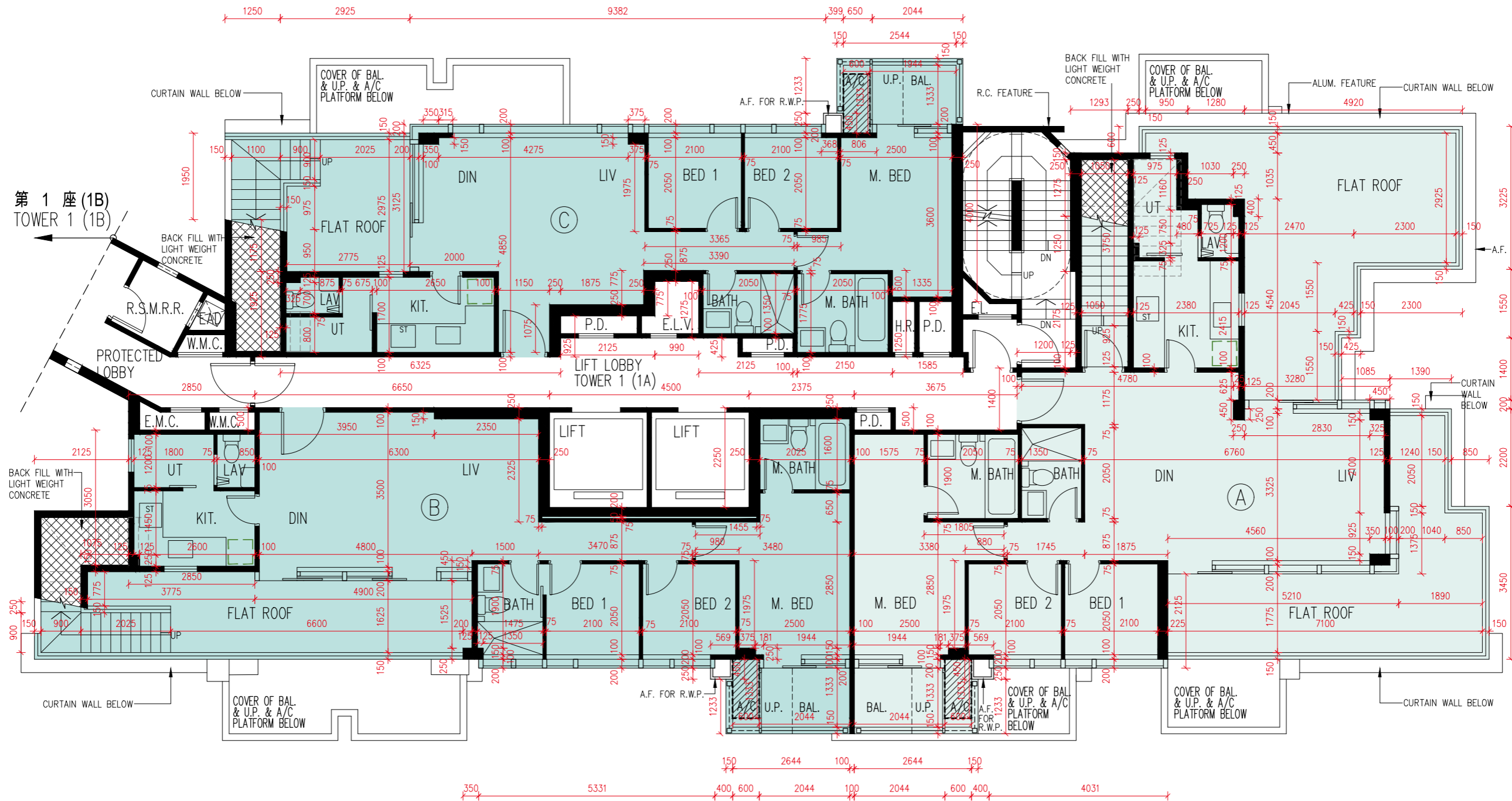
- 住宅物業之天花高度將會因應其結構、建築及/或裝修設計上的差異而有所不同。
- 樓面平面圖之尺規所列數字為以毫米標示之建築結構尺寸。
- 請參閱本售樓說明書第21至23頁之圖例以協助閱讀樓面平面圖之名稱和簡稱。

- The internal ceiling height within residential properties may vary due to structural, architectural and/or decoration design variations.
- The dimensions in the floor plans are all structural dimensions in millimetre.
- Please refer to pages 21 to 23 of this sales brochure for legend of the terms and abbreviations in studying the floor plans.

發展項目的住宅物業的樓面平面圖  
 FLOOR PLANS OF RESIDENTIAL PROPERTIES IN THE DEVELOPMENT

第1座(1A)  
 Tower 1 (1A)

28樓  
 28/F



圖例Legend:

- 隨樓附送之嵌入式裝置
- Built-in Fittings Provided in the Flats

比例：0米(M)

Scale:



5米(M)



## 發展項目的住宅物業的樓面平面圖

### FLOOR PLANS OF RESIDENTIAL PROPERTIES IN THE DEVELOPMENT

第1座(1A) 28樓  
Tower 1 (1A) 28/F

描述 Description			每個住宅物業的層與層之間的高度(指該樓層之石屎地台面與上一層石屎地台面之高度距離)(毫米) The floor-to-floor height (refers to the height between the top surface of the structural slab of a floor and the top surface of the structural slab of its immediate upper floor) of each residential property (mm)	每個住宅物業的樓板(不包括灰泥)的厚度(毫米) The thickness of the floor slabs (excluding plaster) of each residential property (mm)
座 Tower	樓層 Floor	單位 Unit		
第1座(1A) Tower 1 (1A)	28樓 28/F	A	3700, 4000, 4050*, 4075*, 4100*, 4350*, 4400*	150
		B	3700, 3775*, 4000, 4000*, 4050*, 4100*, 4350*	150
		C	3700, 4000, 4000*, 4050*, 4075*, 4350*, 4400*	150,400

\*包括跌級樓板上之混凝土填充層厚度

因住宅物業的較高樓層的結構牆的厚度遞減，較高樓層的內部面積，一般比較低樓層的內部面積稍大。  
(不適用於本發展項目)

備註：

- 住宅物業之天花高度將會因應其結構、建築及/或裝修設計上的差異而有所不同。
- 樓面平面圖之尺規所列數字為以毫米標示之建築結構尺寸。
- 請參閱本售樓說明書第21至23頁之圖例以協助閱讀樓面平面圖之名稱和簡稱。

\*Inclusive of the thickness of mass concrete fill on sunken slab

The internal areas of the residential properties on the upper floors will generally be slightly larger than those on the lower floors because of the reducing thickness of the structural walls on the upper floors. (Not Applicable to the Development)

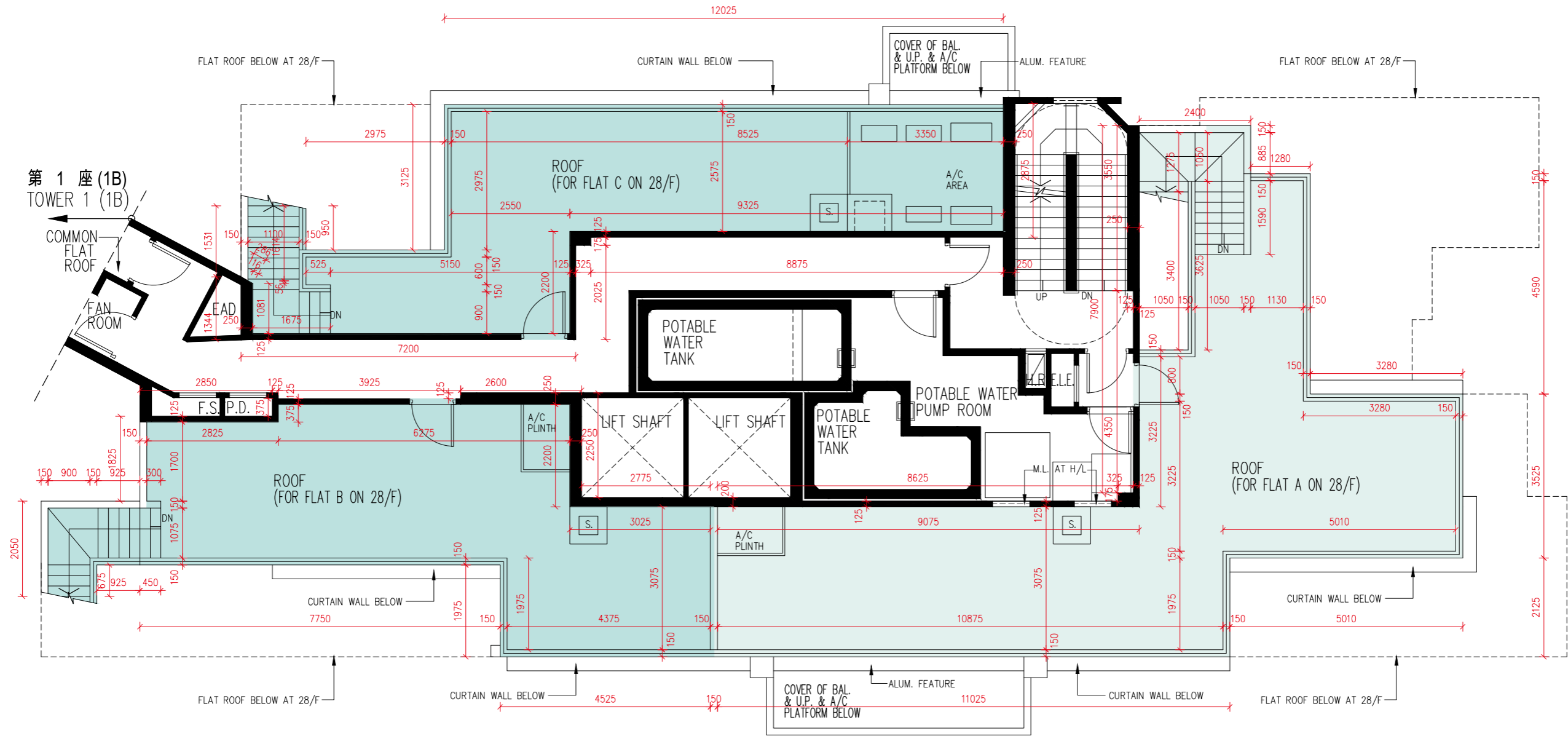
Notes:

- The internal ceiling height within residential properties may vary due to structural, architectural and/or decoration design variations.
- The dimensions in the floor plans are all structural dimensions in millimetre.
- Please refer to pages 21 to 23 of this sales brochure for legend of the terms and abbreviations in studying the floor plans.

發展項目的住宅物業的樓面平面圖  
 FLOOR PLANS OF RESIDENTIAL PROPERTIES IN THE DEVELOPMENT

第1座(1A)  
 Tower 1 (1A)

天台  
 Roof



比例：0米(M) 5米(M)  
 Scale: 5米(M)

## 發展項目的住宅物業的樓面平面圖

### FLOOR PLANS OF RESIDENTIAL PROPERTIES IN THE DEVELOPMENT

第1座 (1A)  
Tower 1 (1A)

天台  
Roof

描述 Description			每個住宅物業的層與層之間的高度 (指該樓層之石屎地台面與上一層石屎地台面之高度距離) (毫米) The floor-to-floor height (refers to the height between the top surface of the structural slab of a floor and the top surface of the structural slab of its immediate upper floor) of each residential property (mm)	每個住宅物業的樓板 (不包括灰泥) 的厚度 (毫米) The thickness of the floor slabs (excluding plaster) of each residential property (mm)
座 Tower	樓層 Floor	單位 Unit		
第1座 (1A) Tower 1 (1A)	天台 Roof	A	不適用 Not applicable	不適用 Not applicable
		B	不適用 Not applicable	不適用 Not applicable
		C	不適用 Not applicable	不適用 Not applicable

因住宅物業的較高樓層的結構牆的厚度遞減，較高樓層的內部面積，一般比較低樓層的內部面積稍大。  
(不適用於本發展項目)

備註：

- 住宅物業之天花高度將會因應其結構、建築及/或裝修設計上的差異而有所不同。
- 樓面平面圖之尺規所列數字為以毫米標示之建築結構尺寸。
- 請參閱本售樓說明書第21至23頁之圖例以協助閱讀樓面平面圖之名稱和簡稱。

The internal areas of the residential properties on the upper floors will generally be slightly larger than those on the lower floors because of the reducing thickness of the structural walls on the upper floors. (Not Applicable to the Development)

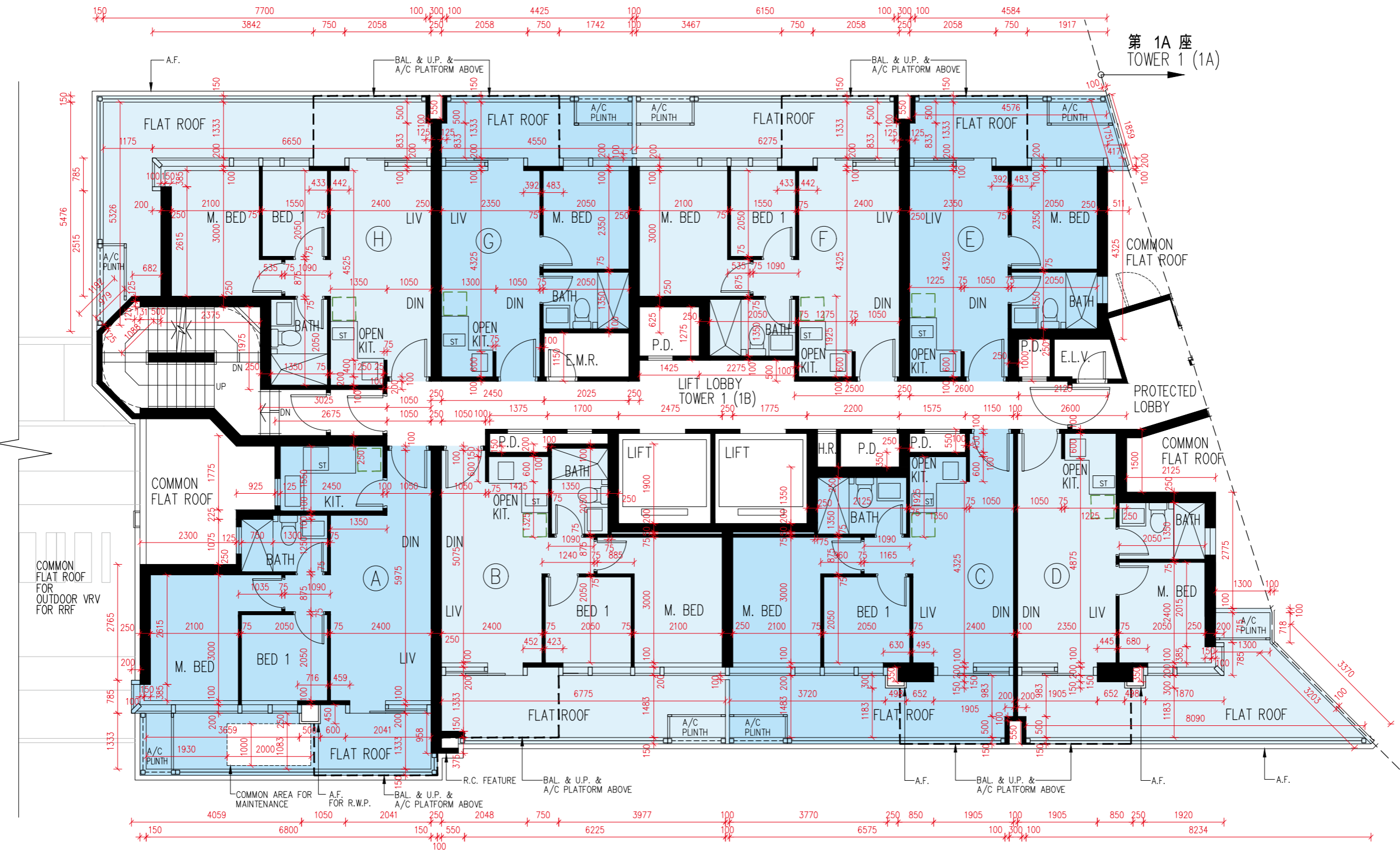
Notes:

- The internal ceiling height within residential properties may vary due to structural, architectural and/or decoration design variations.
- The dimensions in the floor plans are all structural dimensions in millimetre.
- Please refer to pages 21 to 23 of this sales brochure for legend of the terms and abbreviations in studying the floor plans.

發展項目的住宅物業的樓面平面圖  
 FLOOR PLANS OF RESIDENTIAL PROPERTIES IN THE DEVELOPMENT

第1座(1B)  
 Tower 1 (1B)

2樓  
 2/F



圖例 Legend:  
 □ 隨樓附送之嵌入式裝置  
 □ Built-in Fittings Provided in the Flats

比例：0米(M) 5米(M)  
 Scale: 5米(M)

## 發展項目的住宅物業的樓面平面圖

### FLOOR PLANS OF RESIDENTIAL PROPERTIES IN THE DEVELOPMENT

第1座 (1B)  
Tower 1 (1B)

2樓  
2/F

描述 Description			每個住宅物業的層與層之間的高度 (指該樓層之石屎地台面與上一層石屎地台面之高度距離) (毫米) The floor-to-floor height (refers to the height between the top surface of the structural slab of a floor and the top surface of the structural slab of its immediate upper floor) of each residential property (mm)	每個住宅物業的樓板 (不包括灰泥) 的厚度 (毫米) The thickness of the floor slabs (excluding plaster) of each residential property (mm)
座 Tower	樓層 Floor	單位 Unit		
第1座 (1B) Tower 1 (1B)	2樓 2/F	A	3600*, 3800*, 3925*, 4000*	150
		B	3600*, 3650*, 3800*, 3925*, 4000*	150
		C	3600*, 3650*, 3800*, 3925*, 4000*	150
		D	3450*, 3600*, 3650*, 3800*, 3925*, 4000*	150
		E	3450*, 3600*, 3650*, 3700*, 3800*, 3925*, 4000*	150
		F	3600*, 3650*, 3700*, 3800*, 3925*, 4000*	150
		G	3600*, 3650*, 3700*, 3800*, 3925*, 4000*	150
		H	3600*, 3650*, 3700*, 3800*, 3925*, 4000*	150

\*包括跌級樓板上之混凝土填充層厚度

因住宅物業的較高樓層的結構牆的厚度遞減，較高樓層的內部面積，一般比較低樓層的內部面積稍大。  
(不適用於本發展項目)

備註：

- 住宅物業之天花高度將會因應其結構、建築及/或裝修設計上的差異而有所不同。
- 樓面平面圖之尺規所列數字為以毫米標示之建築結構尺寸。
- 請參閱本售樓說明書第21至23頁之圖例以協助閱讀樓面平面圖之名稱和簡稱。

\*Inclusive of the thickness of mass concrete fill on sunken slab

The internal areas of the residential properties on the upper floors will generally be slightly larger than those on the lower floors because of the reducing thickness of the structural walls on the upper floors. (Not Applicable to the Development)

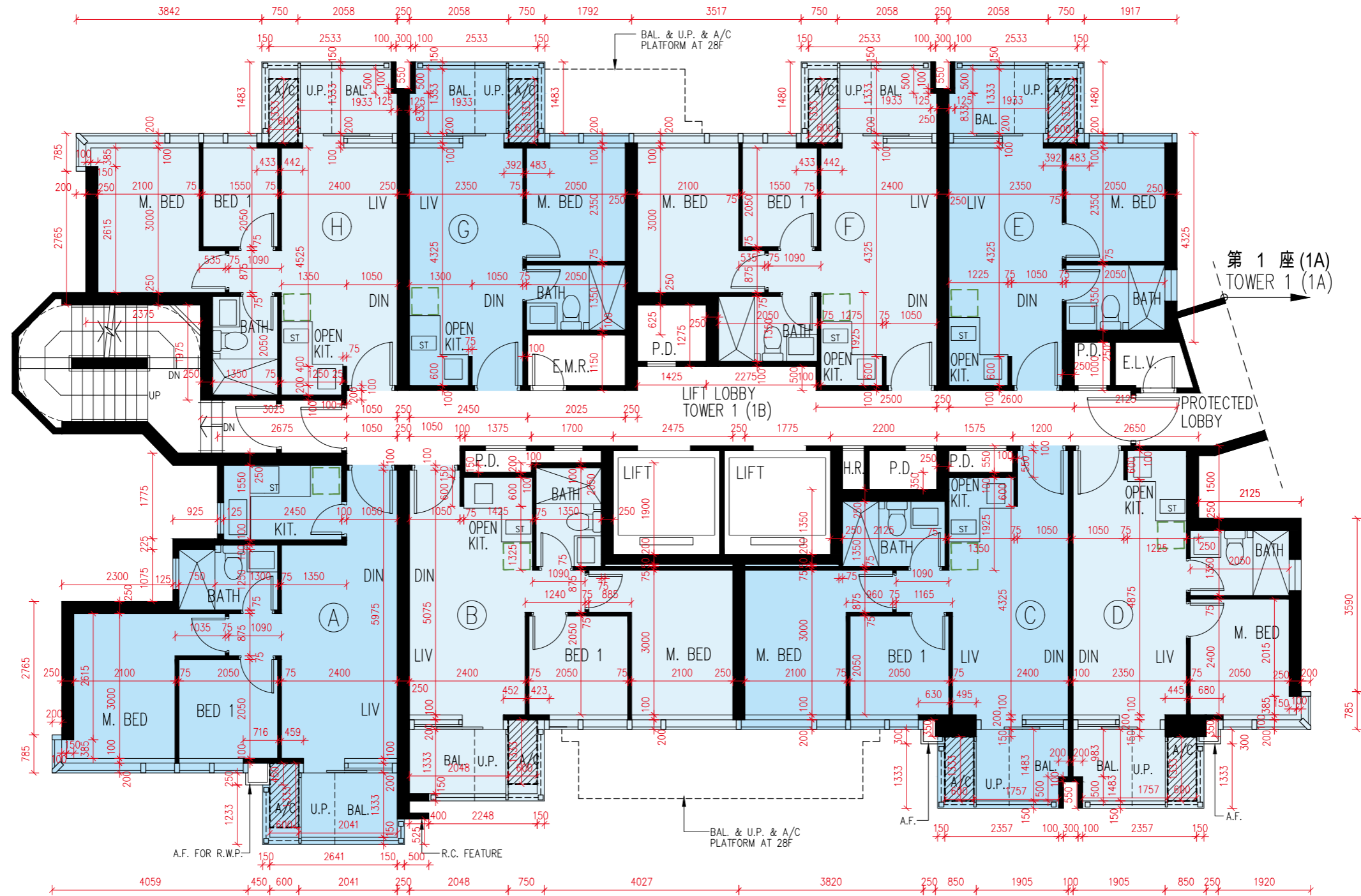
Notes:

- The internal ceiling height within residential properties may vary due to structural, architectural and/or decoration design variations.
- The dimensions in the floor plans are all structural dimensions in millimetre.
- Please refer to pages 21 to 23 of this sales brochure for legend of the terms and abbreviations in studying the floor plans.

發展項目的住宅物業的樓面平面圖  
 FLOOR PLANS OF RESIDENTIAL PROPERTIES IN THE DEVELOPMENT

第1座(1B)  
 Tower 1 (1B)

3樓、5樓至12樓、15樓至23樓及25樓至27樓  
 3/F, 5/F-12/F, 15/F-23/F and 25/F-27/F



圖例Legend:  
 □ 隨樓附送之嵌入式裝置  
 □ Built-in Fittings Provided in the Flats

比例：0米(M) 5米(M)  
 Scale: 5米(M)

## 發展項目的住宅物業的樓面平面圖

### FLOOR PLANS OF RESIDENTIAL PROPERTIES IN THE DEVELOPMENT

第1座 (1B)  
Tower 1 (1B)

3樓、5樓至12樓、15樓至23樓及25樓至27樓  
3/F, 5/F-12/F, 15/F-23/F and 25/F-27/F

描述 Description			每個住宅物業的層與層之間的高度 (指該樓層之石屎地台面與上一層石屎地台面之高度距離) (毫米) The floor-to-floor height (refers to the height between the top surface of the structural slab of a floor and the top surface of the structural slab of its immediate upper floor) of each residential property (mm)	每個住宅物業的樓板 (不包括灰泥) 的厚度 (毫米) The thickness of the floor slabs (excluding plaster) of each residential property (mm)
座 Tower	樓層 Floor	單位 Unit		
第1座 (1B) Tower 1 (1B)	3樓、5樓至12樓、15樓至23樓及 25樓至26樓 3/F, 5/F-12/F, 15/F-23/F and 25/F-26/F	A	3500, 3500*	150
		B	3500, 3500*	150
		C	3500, 3500*	150
		D	3500, 3500*	150
		E	3500, 3500*	150
		F	3500, 3500*	150
		G	3500, 3500*	150
		H	3500, 3500*	150
	27樓 27/F	A	3700, 3750, 3775*, 4000, 4100*	150, 200, 400
		B	3650, 3725*, 3750, 3925, 3950*, 4000, 4000*, 4075*, 4275*, 4350*	150
		C	3650, 3750, 3750*, 4000, 4000*	150, 200
		D	3700, 3750, 3750*, 3775*, 4000, 4050*	150, 200
		E	3700, 3750, 3750*, 3775*, 4000, 4050*, 4300*	150, 200, 400
		F	3650, 3675*, 3750, 3750*, 3925, 3950*, 4000, 4075*	150
		G	3650, 3750, 3750*, 4000, 4000*, 4075*, 4300*, 4350*	150
H	3700, 3750, 3750*, 4000, 4075*, 4300*, 4350*	150, 200, 400		

\*包括跌級樓板上之混凝土填充層厚度

\*Inclusive of the thickness of mass concrete fill on sunken slab

因住宅物業的較高樓層的結構牆的厚度遞減，較高樓層的內部面積，一般比較低樓層的內部面積稍大。  
(不適用於本發展項目)

The internal areas of the residential properties on the upper floors will generally be slightly larger than those on the lower floors because of the reducing thickness of the structural walls on the upper floors. (Not Applicable to the Development)

備註：

Notes:

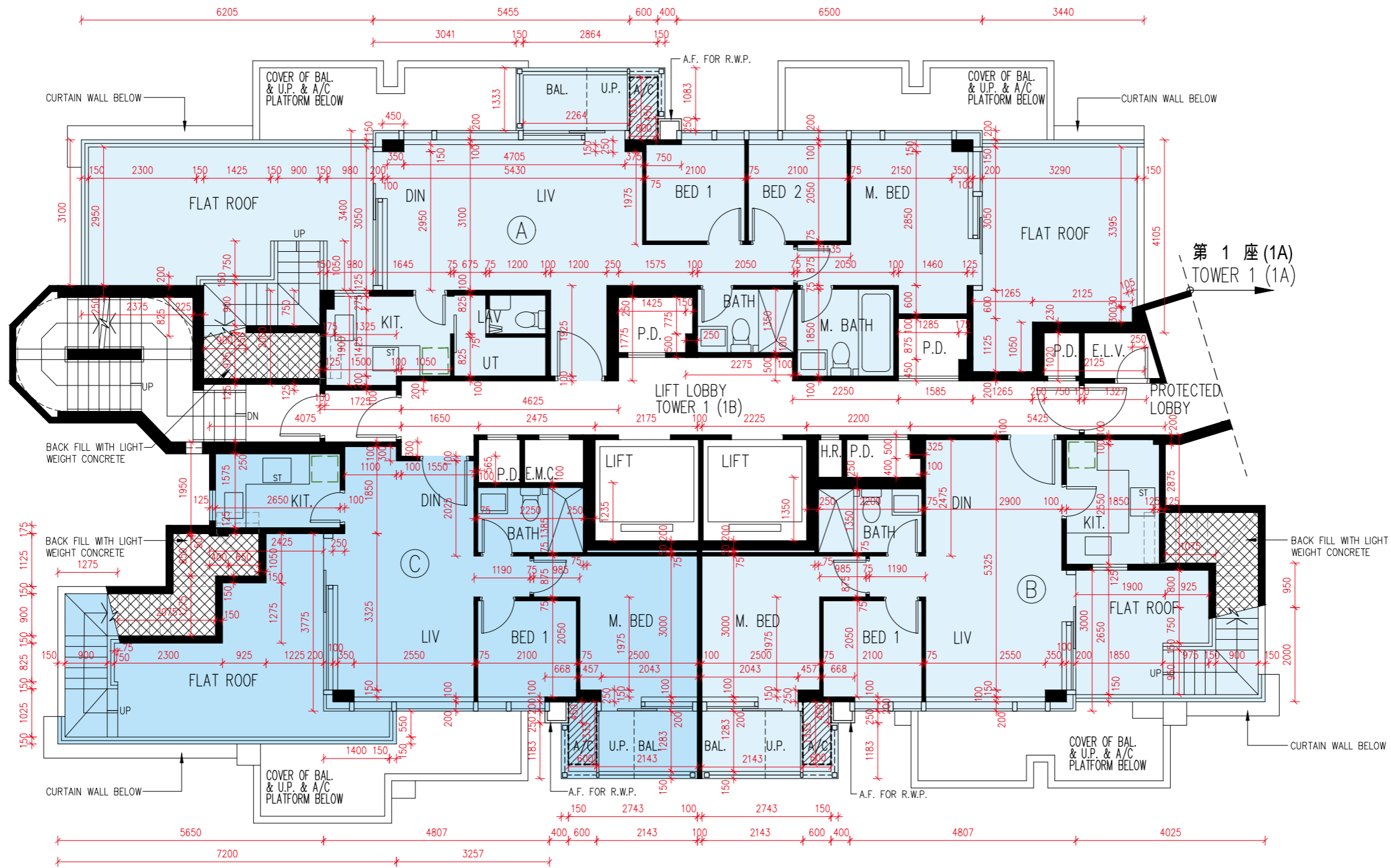
- 住宅物業之天花高度將會因應其結構、建築及/或裝修設計上的差異而有所不同。
- 樓面平面圖之尺規所列數字為以毫米標示之建築結構尺寸。
- 請參閱本售樓說明書第21至23頁之圖例以協助閱讀樓面平面圖之名稱和簡稱。

- The internal ceiling height within residential properties may vary due to structural, architectural and/or decoration design variations.
- The dimensions in the floor plans are all structural dimensions in millimetre.
- Please refer to pages 21 to 23 of this sales brochure for legend of the terms and abbreviations in studying the floor plans.

發展項目的住宅物業的樓面平面圖  
 FLOOR PLANS OF RESIDENTIAL PROPERTIES IN THE DEVELOPMENT

第1座(1B)  
 Tower 1 (1B)

28樓  
 28/F



圖例Legend:  
 □ 隨樓附送之嵌入式裝置  
 □ Built-in Fittings Provided in the Flats

比例：0米(M) 5米(M)  
 Scale: 5米(M)



## 發展項目的住宅物業的樓面平面圖

### FLOOR PLANS OF RESIDENTIAL PROPERTIES IN THE DEVELOPMENT

第1座(1B) 28樓  
Tower 1 (1B) 28/F

描述 Description			每個住宅物業的層與層之間的高度(指該樓層之石屎地台面與上一層石屎地台面之高度距離)(毫米) The floor-to-floor height (refers to the height between the top surface of the structural slab of a floor and the top surface of the structural slab of its immediate upper floor) of each residential property (mm)	每個住宅物業的樓板(不包括灰泥)的厚度(毫米) The thickness of the floor slabs (excluding plaster) of each residential property (mm)
座 Tower	樓層 Floor	單位 Unit		
第1座(1B) Tower 1 (1B)	28樓 28/F	A	3650, 3700, 4000, 4000*, 4075*, 4350*, 4400*	150, 200
		B	3700, 3775*, 4000*, 4050*	150
		C	3700, 3775*, 4050*	150

\*包括跌級樓板上之混凝土填充層厚度

因住宅物業的較高樓層的結構牆的厚度遞減，較高樓層的內部面積，一般比較低樓層的內部面積稍大。  
(不適用於本發展項目)

備註：

- 住宅物業之天花高度將會因應其結構、建築及/或裝修設計上的差異而有所不同。
- 樓面平面圖之尺規所列數字為以毫米標示之建築結構尺寸。
- 請參閱本售樓說明書第21至23頁之圖例以協助閱讀樓面平面圖之名稱和簡稱。

\*Inclusive of the thickness of mass concrete fill on sunken slab

The internal areas of the residential properties on the upper floors will generally be slightly larger than those on the lower floors because of the reducing thickness of the structural walls on the upper floors. (Not Applicable to the Development)

Notes:

- The internal ceiling height within residential properties may vary due to structural, architectural and/or decoration design variations.
- The dimensions in the floor plans are all structural dimensions in millimetre.
- Please refer to pages 21 to 23 of this sales brochure for legend of the terms and abbreviations in studying the floor plans.



## 發展項目的住宅物業的樓面平面圖

### FLOOR PLANS OF RESIDENTIAL PROPERTIES IN THE DEVELOPMENT

第B座 (1B)  
Tower B (1B)

天台  
Roof

描述 Description			每個住宅物業的層與層之間的高度 (指該樓層之石屎地台面與上一層石屎地台面之高度距離) (毫米) The floor-to-floor height (refers to the height between the top surface of the structural slab of a floor and the top surface of the structural slab of its immediate upper floor) of each residential property (mm)	每個住宅物業的樓板 (不包括灰泥) 的厚度 (毫米) The thickness of the floor slabs (excluding plaster) of each residential property (mm)
座 Tower	樓層 Floor	單位 Unit		
第1座 (1B) Tower 1 (1B)	天台 Roof	A	不適用 Not applicable	不適用 Not applicable
		B	不適用 Not applicable	不適用 Not applicable
		C	不適用 Not applicable	不適用 Not applicable

因住宅物業的較高樓層的結構牆的厚度遞減，較高樓層的內部面積，一般比較低樓層的內部面積稍大。  
(不適用於本發展項目)

備註：

- 住宅物業之天花高度將會因應其結構、建築及/或裝修設計上的差異而有所不同。
- 樓面平面圖之尺規所列數字為以毫米標示之建築結構尺寸。
- 請參閱本售樓說明書第21至23頁之圖例以協助閱讀樓面平面圖之名稱和簡稱。

The internal areas of the residential properties on the upper floors will generally be slightly larger than those on the lower floors because of the reducing thickness of the structural walls on the upper floors. (Not Applicable to the Development)

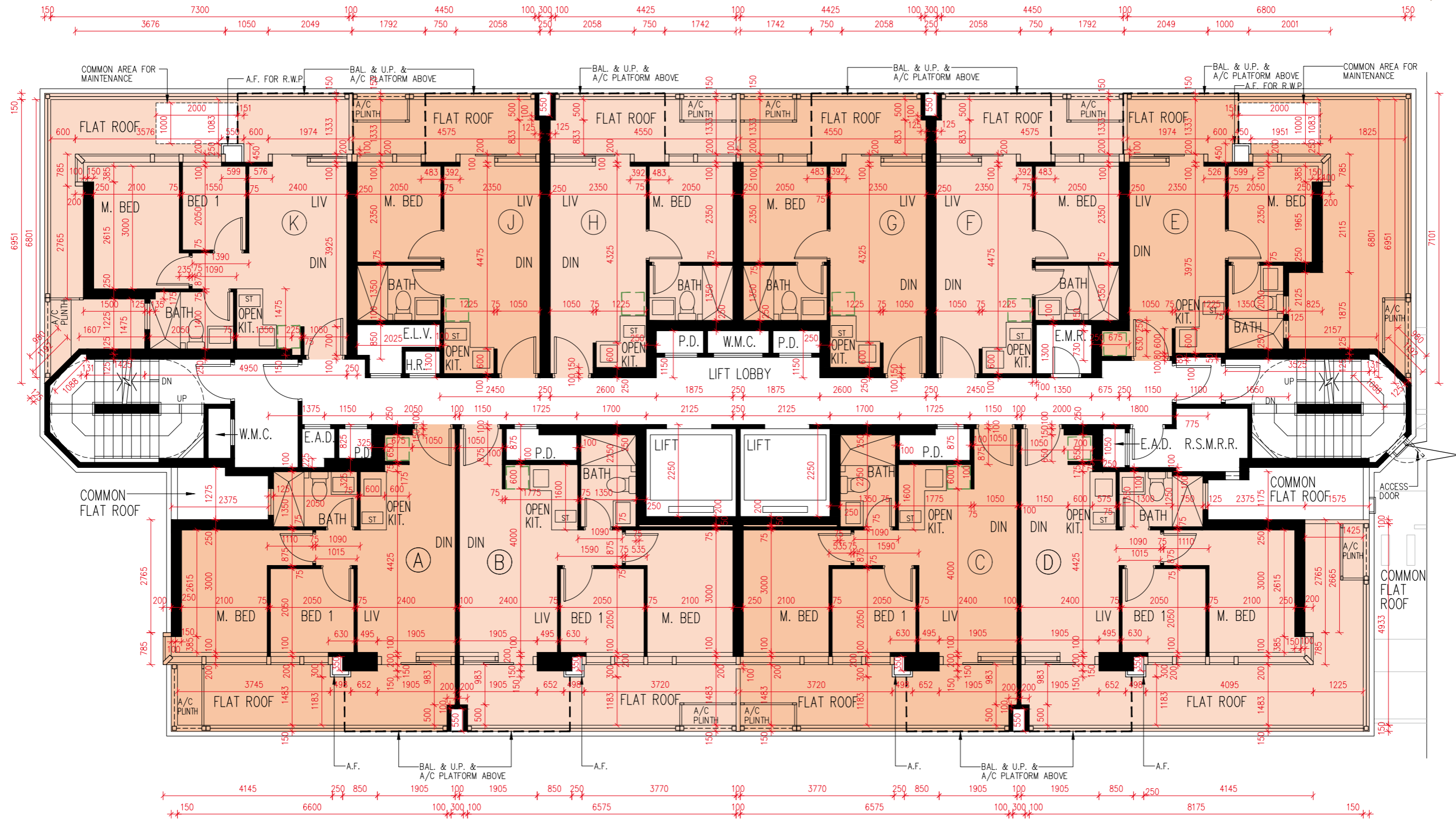
Notes:

- The internal ceiling height within residential properties may vary due to structural, architectural and/or decoration design variations.
- The dimensions in the floor plans are all structural dimensions in millimetre.
- Please refer to pages 21 to 23 of this sales brochure for legend of the terms and abbreviations in studying the floor plans.

# 發展項目的住宅物業的樓面平面圖 FLOOR PLANS OF RESIDENTIAL PROPERTIES IN THE DEVELOPMENT

第2座  
Tower 2

2樓  
2/F



圖例 Legend:  
 □ 隨樓附送之嵌入式裝置  
 □ Built-in Fittings Provided in the Flats

比例：0米(M) 5米(M)  
 Scale:

## 發展項目的住宅物業的樓面平面圖

### FLOOR PLANS OF RESIDENTIAL PROPERTIES IN THE DEVELOPMENT

第2座  
Tower 2

2樓  
2/F

描述 Description			每個住宅物業的層與層之間的高度 (指該樓層之石屎地台面與上一層石屎地台面之高度距離) (毫米) The floor-to-floor height (refers to the height between the top surface of the structural slab of a floor and the top surface of the structural slab of its immediate upper floor) of each residential property (mm)	每個住宅物業的樓板 (不包括灰泥) 的厚度 (毫米) The thickness of the floor slabs (excluding plaster) of each residential property (mm)
座 Tower	樓層 Floor	單位 Unit		
第2座 Tower 2	2樓 2/F	A	3600*, 3650*, 3800*, 3925*, 4000*	150, 200
		B	3600*, 3650*, 3800*, 3925*, 4000*	150, 200
		C	3450*, 3600*, 3650*, 3800*, 3925*, 4000*	150, 200
		D	3600*, 3650*, 3800*, 3925*, 4000*	150, 200
		E	3650*, 3800*, 3925*, 4000*	150
		F	3600*, 3650*, 3800*, 3925*, 4000*	150, 200
		G	3600*, 3650*, 3800*, 3925*, 4000*	150, 175
		H	3600*, 3650*, 3800*, 3925*, 4000*	150, 175
		J	3600*, 3650*, 3800*, 3925*, 4000*	150, 175
		K	3650*, 3800*, 3925*, 4000*	150

\*包括跌級樓板上之混凝土填充層厚度

\*Inclusive of the thickness of mass concrete fill on sunken slab

因住宅物業的較高樓層的結構牆的厚度遞減，較高樓層的內部面積，一般比較低樓層的內部面積稍大。  
(不適用於本發展項目)

The internal areas of the residential properties on the upper floors will generally be slightly larger than those on the lower floors because of the reducing thickness of the structural walls on the upper floors. (Not Applicable to the Development)

備註：

Notes:

- 住宅物業之天花高度將會因應其結構、建築及/或裝修設計上的差異而有所不同。
- 樓面平面圖之尺規所列數字為以毫米標示之建築結構尺寸。
- 請參閱本售樓說明書第21至23頁之圖例以協助閱讀樓面平面圖之名稱和簡稱。

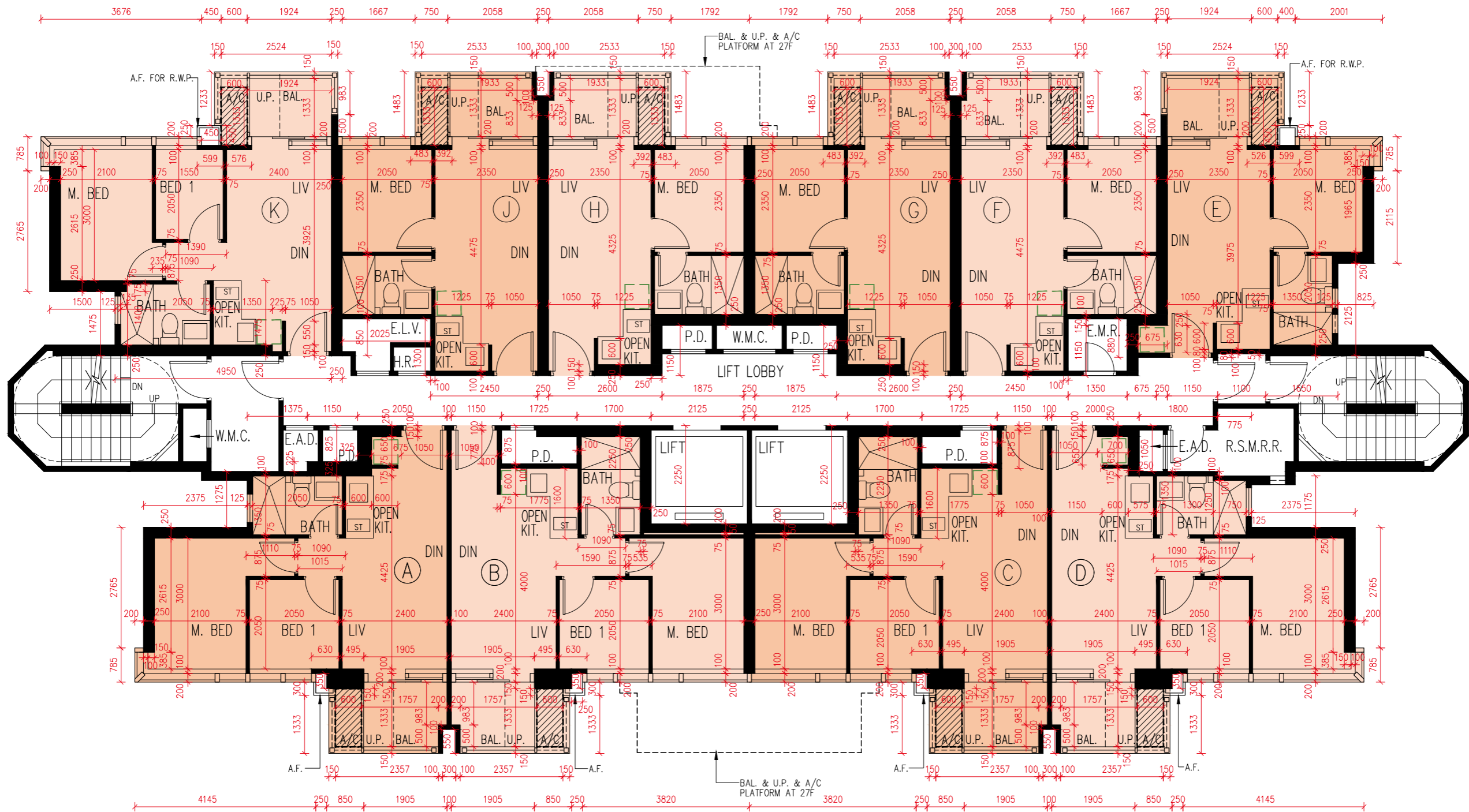
- The internal ceiling height within residential properties may vary due to structural, architectural and/or decoration design variations.
- The dimensions in the floor plans are all structural dimensions in millimetre.
- Please refer to pages 21 to 23 of this sales brochure for legend of the terms and abbreviations in studying the floor plans.

發展項目的住宅物業的樓面平面圖

FLOOR PLANS OF RESIDENTIAL PROPERTIES IN THE DEVELOPMENT

第2座  
Tower 2

3樓、5樓至12樓、15樓至23樓及25樓至26樓  
3/F, 5/F-12/F, 15/F-23/F and 25/F-26/F



圖例Legend:

- 隨樓附送之嵌入式裝置
- Built-in Fittings Provided in the Flats

比例：0米(M)

Scale:



5米(M)

## 發展項目的住宅物業的樓面平面圖

### FLOOR PLANS OF RESIDENTIAL PROPERTIES IN THE DEVELOPMENT

第2座  
Tower 2

3樓、5樓至12樓、15樓至23樓及25樓至26樓  
3/F, 5/F-12/F, 15/F-23/F and 25/F-26/F

描述 Description			每個住宅物業的層與層之間的高度 (指該樓層之石屎地台面與上一層石屎地台面之高度距離) (毫米) The floor-to-floor height (refers to the height between the top surface of the structural slab of a floor and the top surface of the structural slab of its immediate upper floor) of each residential property (mm)	每個住宅物業的樓板 (不包括灰泥) 的厚度 (毫米) The thickness of the floor slabs (excluding plaster) of each residential property (mm)
座 Tower	樓層 Floor	單位 Unit		
第2座 Tower 2	3樓、5樓至12樓、15樓至23樓及25樓 3/F, 5/F-12/F, 15/F-23/F and 25/F	A	3500, 3500*	150, 200
		B	3500, 3500*	150, 200
		C	3500, 3500*	150, 200
		D	3500, 3500*	150, 200
		E	3500, 3500*	150
		F	3500, 3500*	150, 200
		G	3500, 3500*	150, 175
		H	3500, 3500*	150, 175
		J	3500, 3500*	150, 175
	K	3500, 3500*	150	
	26樓 26/F	A	3700, 3750, 3750*, 3775*, 4000, 4050*, 4350*	150, 200
		B	3650, 3750, 3750*, 3925, 4000, 4000*, 4075*, 4275*, 4350*	150, 200
		C	3650, 3750, 3750*, 3925, 4000, 4000*, 4075*, 4275*, 4350*	150, 200
		D	3700, 3750, 3750*, 3775*, 4000, 4050*, 4075*, 4350*	150, 200
		E	3700, 3750, 3775*, 4000, 4050*	150, 200
		F	3700, 3750, 3750*, 3775*, 4000, 4075*, 4350*	150, 200
		G	3650, 3750, 3750*, 3925, 4000, 4000*, 4075*, 4275*, 4350*	150, 175
		H	3650, 4000, 4000*, 4075*, 4350*	150, 175, 400
		J	3650, 3750, 3750*, 3925, 4000, 4000*, 4075*, 4350*	150, 175
K		3700, 3750, 3775*, 4000, 4000*, 4050*, 4350*	150, 200	

\*包括跌級樓板上之混凝土填充層厚度

\*Inclusive of the thickness of mass concrete fill on sunken slab

因住宅物業的較高樓層的結構牆的厚度遞減，較高樓層的內部面積，一般比較低樓層的內部面積稍大。  
(不適用於本發展項目)

The internal areas of the residential properties on the upper floors will generally be slightly larger than those on the lower floors because of the reducing thickness of the structural walls on the upper floors. (Not Applicable to the Development)

備註：

Notes:

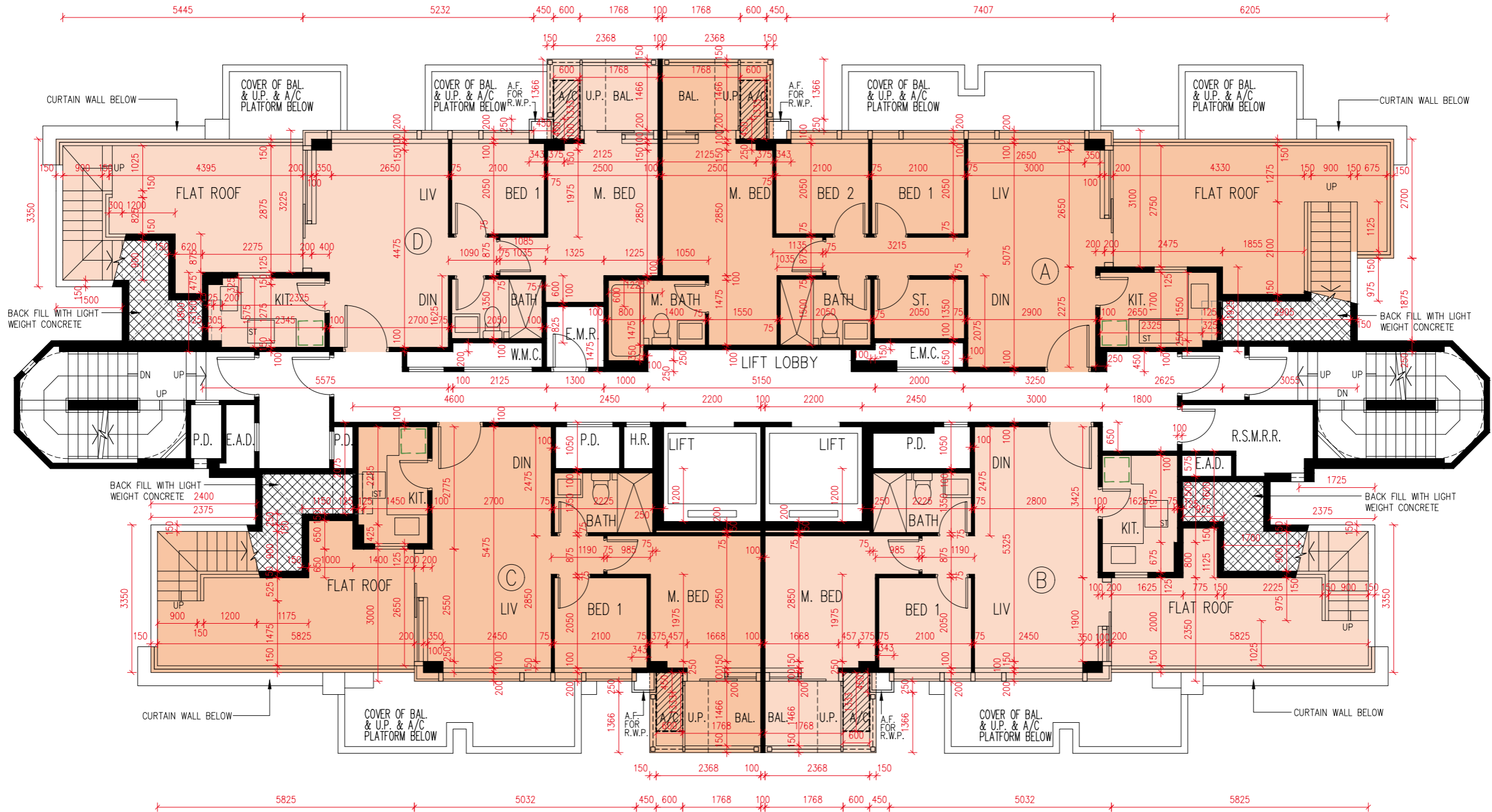
- 住宅物業之天花高度將會因應其結構、建築及/或裝修設計上的差異而有所不同。
- 樓面平面圖之尺規所列數字為以毫米標示之建築結構尺寸。
- 請參閱本售樓說明書第21至23頁之圖例以協助閱讀樓面平面圖之名稱和簡稱。

- The internal ceiling height within residential properties may vary due to structural, architectural and/or decoration design variations.
- The dimensions in the floor plans are all structural dimensions in millimetre.
- Please refer to pages 21 to 23 of this sales brochure for legend of the terms and abbreviations in studying the floor plans.

發展項目的住宅物業的樓面平面圖  
 FLOOR PLANS OF RESIDENTIAL PROPERTIES IN THE DEVELOPMENT

第2座  
 Tower 2

27樓  
 27/F



圖例 Legend:  
 □ 隨樓附送之嵌入式裝置  
 □ Built-in Fittings Provided in the Flats

比例：0米(M) 5米(M)  
 Scale: 5米(M)



## 發展項目的住宅物業的樓面平面圖

### FLOOR PLANS OF RESIDENTIAL PROPERTIES IN THE DEVELOPMENT

第2座  
Tower 2

27樓  
27/F

描述 Description			每個住宅物業的層與層之間的高度 (指該樓層之石屎地台面與上一層石屎地台面之高度距離) (毫米) The floor-to-floor height (refers to the height between the top surface of the structural slab of a floor and the top surface of the structural slab of its immediate upper floor) of each residential property (mm)	每個住宅物業的樓板 (不包括灰泥) 的厚度 (毫米) The thickness of the floor slabs (excluding plaster) of each residential property (mm)
座 Tower	樓層 Floor	單位 Unit		
第2座 Tower 2	27樓 27 /F	A	3700, 3900*, 4000, 4000*, 4075*, 4350*	150, 175
		B	3700, 3775*, 3900*, 4000, 4000*, 4050*, 4300*	150, 200
		C	3700, 3775*, 3900*, 4000, 4000*, 4050*	150, 200
		D	3700, 3900*, 4000, 4000*, 4075*, 4350*	150, 175

\*包括跌級樓板上之混凝土填充層厚度

因住宅物業的較高樓層的結構牆的厚度遞減，較高樓層的內部面積，一般比較低樓層的內部面積稍大。  
(不適用於本發展項目)

備註：

- 住宅物業之天花高度將會因應其結構、建築及/或裝修設計上的差異而有所不同。
- 樓面平面圖之尺規所列數字為以毫米標示之建築結構尺寸。
- 請參閱本售樓說明書第21至23頁之圖例以協助閱讀樓面平面圖之名稱和簡稱。

\*Inclusive of the thickness of mass concrete fill on sunken slab

The internal areas of the residential properties on the upper floors will generally be slightly larger than those on the lower floors because of the reducing thickness of the structural walls on the upper floors. (Not Applicable to the Development)

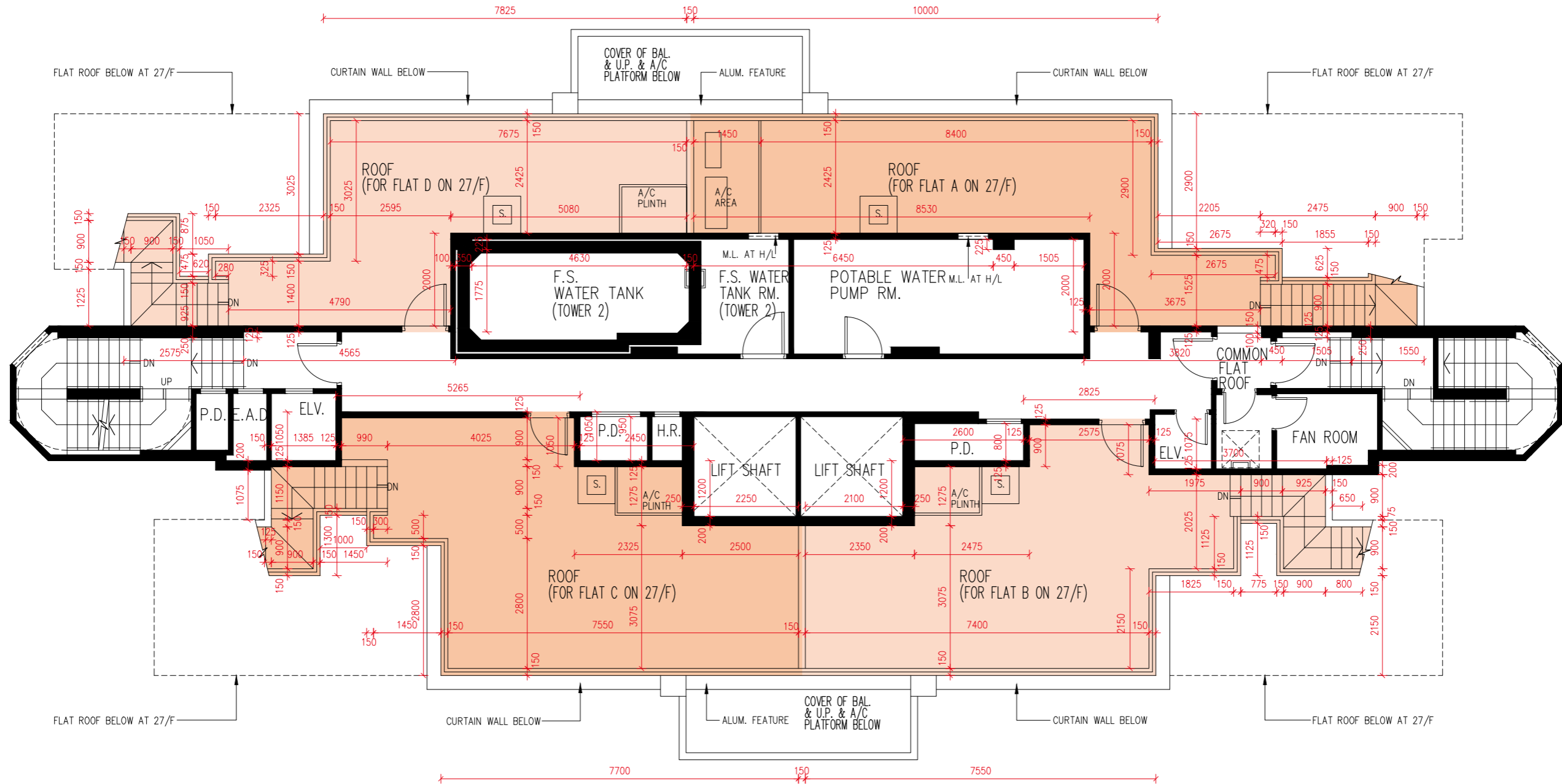
Notes:

- The internal ceiling height within residential properties may vary due to structural, architectural and/or decoration design variations.
- The dimensions in the floor plans are all structural dimensions in millimetre.
- Please refer to pages 21 to 23 of this sales brochure for legend of the terms and abbreviations in studying the floor plans.

發展項目的住宅物業的樓面平面圖  
 FLOOR PLANS OF RESIDENTIAL PROPERTIES IN THE DEVELOPMENT

第2座  
 Tower 2

天台  
 Roof



比例：0米(M) 5米(M)  
 Scale: 5米(M)

## 發展項目的住宅物業的樓面平面圖

### FLOOR PLANS OF RESIDENTIAL PROPERTIES IN THE DEVELOPMENT

第2座  
Tower 2

天台  
Roof

描述 Description			每個住宅物業的層與層之間的高度 (指該樓層之石屎地台面與上一層石屎地台面之高度距離) (毫米) The floor-to-floor height (refers to the height between the top surface of the structural slab of a floor and the top surface of the structural slab of its immediate upper floor) of each residential property (mm)	每個住宅物業的樓板 (不包括灰泥) 的厚度 (毫米) The thickness of the floor slabs (excluding plaster) of each residential property (mm)
座 Tower	樓層 Floor	單位 Unit		
第2座 Tower 2	天台 Roof	A	不適用 Not applicable	不適用 Not applicable
		B	不適用 Not applicable	不適用 Not applicable
		C	不適用 Not applicable	不適用 Not applicable
		D	不適用 Not applicable	不適用 Not applicable

因住宅物業的較高樓層的結構牆的厚度遞減，較高樓層的內部面積，一般比較低樓層的內部面積稍大。  
(不適用於本發展項目)

備註：

- 住宅物業之天花高度將會因應其結構、建築及/或裝修設計上的差異而有所不同。
- 樓面平面圖之尺規所列數字為以毫米標示之建築結構尺寸。
- 請參閱本售樓說明書第21至23頁之圖例以協助閱讀樓面平面圖之名稱和簡稱。

The internal areas of the residential properties on the upper floors will generally be slightly larger than those on the lower floors because of the reducing thickness of the structural walls on the upper floors. (Not Applicable to the Development)

Notes:

- The internal ceiling height within residential properties may vary due to structural, architectural and/or decoration design variations.
- The dimensions in the floor plans are all structural dimensions in millimetre.
- Please refer to pages 21 to 23 of this sales brochure for legend of the terms and abbreviations in studying the floor plans.