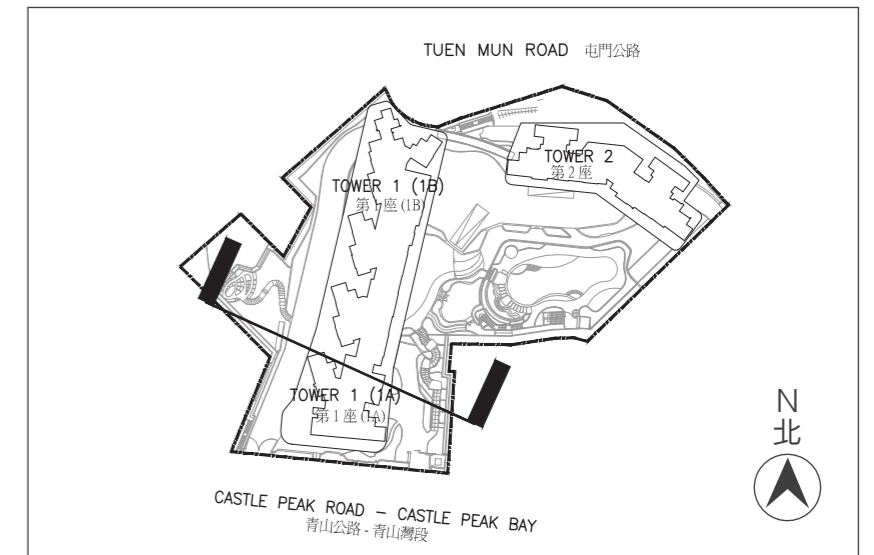
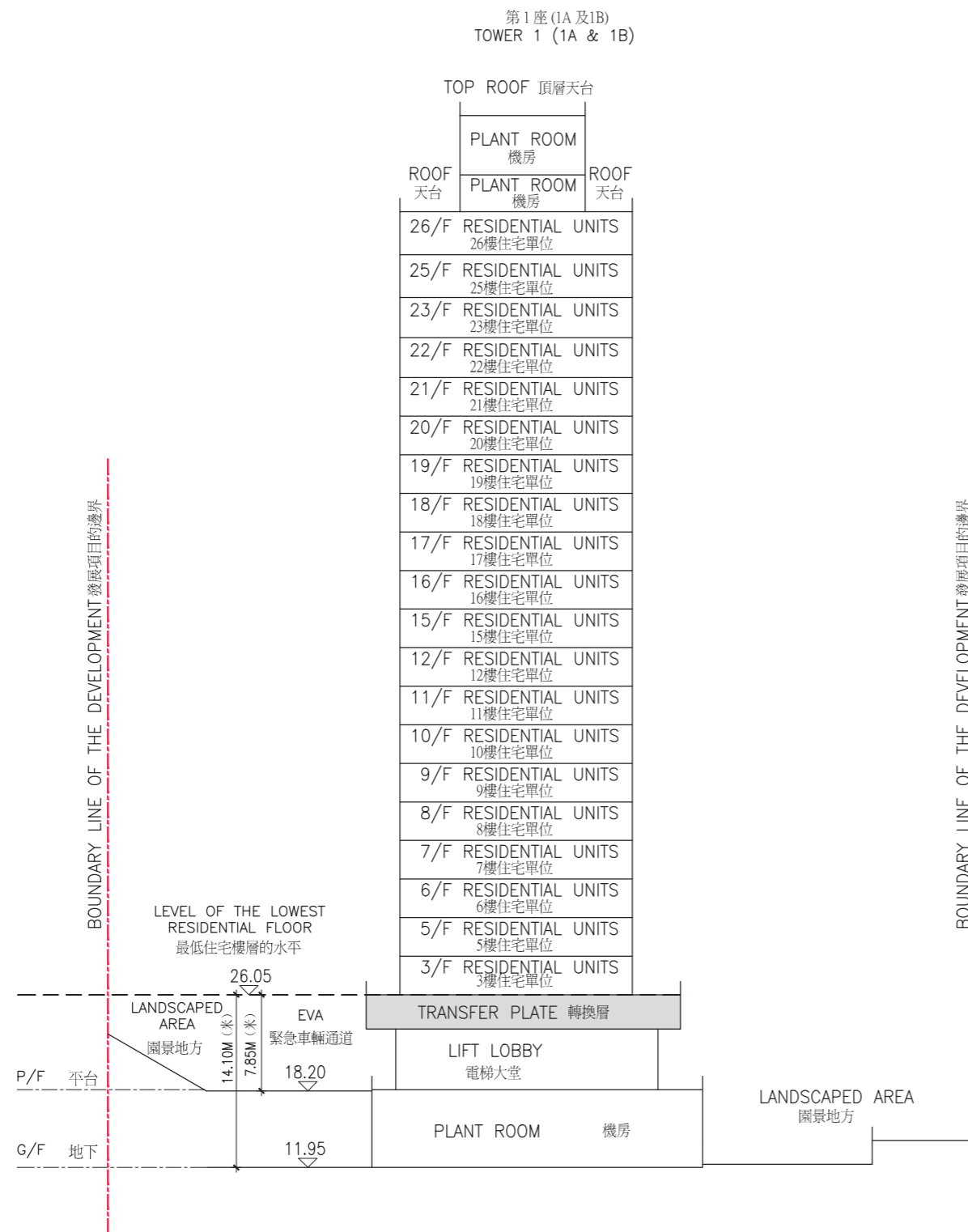


LEGEND 圖例

- Height in metres above the Hong Kong Principal Datum (HKPD) (in metres). 香港主水平基準以上的高度 (米)。
- Dotted line denotes the level of the lowest residential floor of the building. 虛線為該建築物最底住宅樓層水平。

The part of Emergency Vehicular Access (EVA) adjacent to the building is 18.20 metres above the Hong Kong Principal Datum. 毗連建築物的一段緊急車輛通道為香港主水平基準以上 18.20 米。

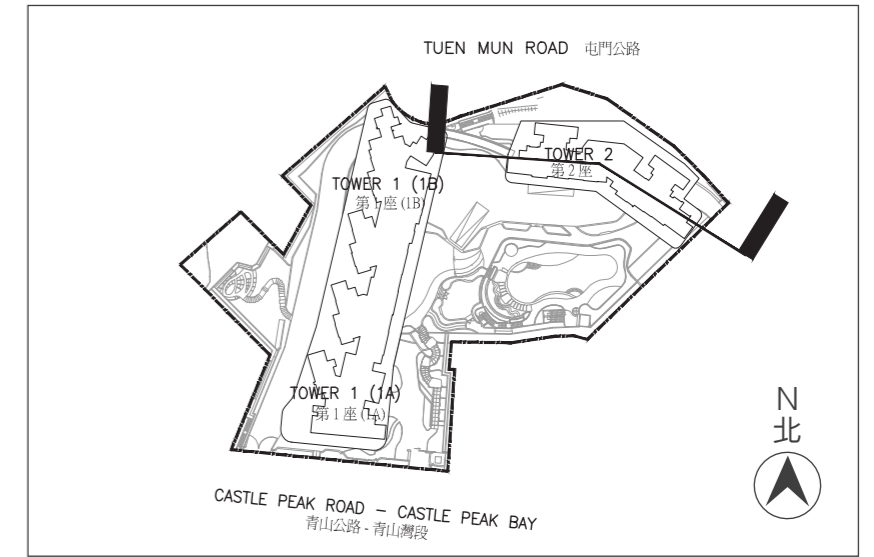
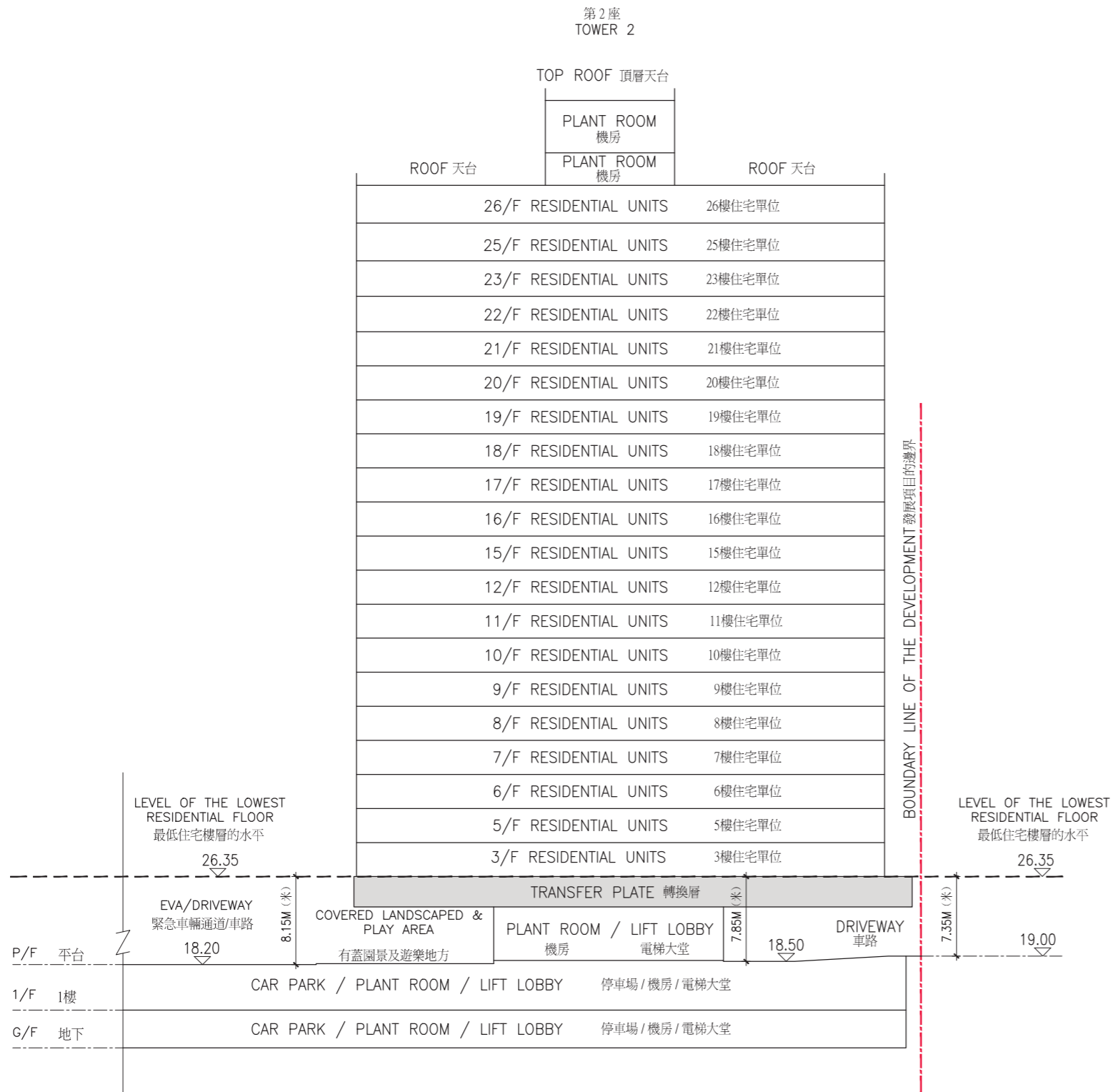
The part of Castle Peak Road - Castle Peak Bay adjacent to the building is 10.51 metres to 12.24 metres above the Hong Kong Principal Datum. 毗連建築物的一段青山公路 - 青山灣段為香港主水平基準以上 10.51 米至 12.24 米。



LEGEND 圖例

- Height in metres above the Hong Kong Principal Datum (HKPD) (in metres).
香港主水平基準以上的高度 (米)。
- Dotted line denotes the level of the lowest residential floor of the building.
虛線為該建築物最底住宅樓層水平。

The part of Emergency Vehicular Access (EVA) adjacent to the building is 11.95 metres to 18.20 metres above the Hong Kong Principal Datum. 毗連建築物的一段緊急車輛通道為香港主水平基準以上 11.95 米至 18.20 米。



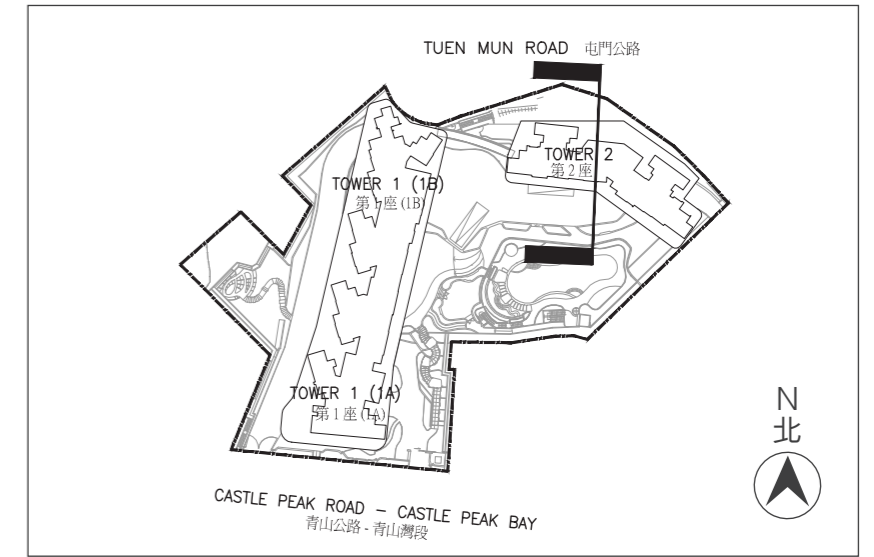
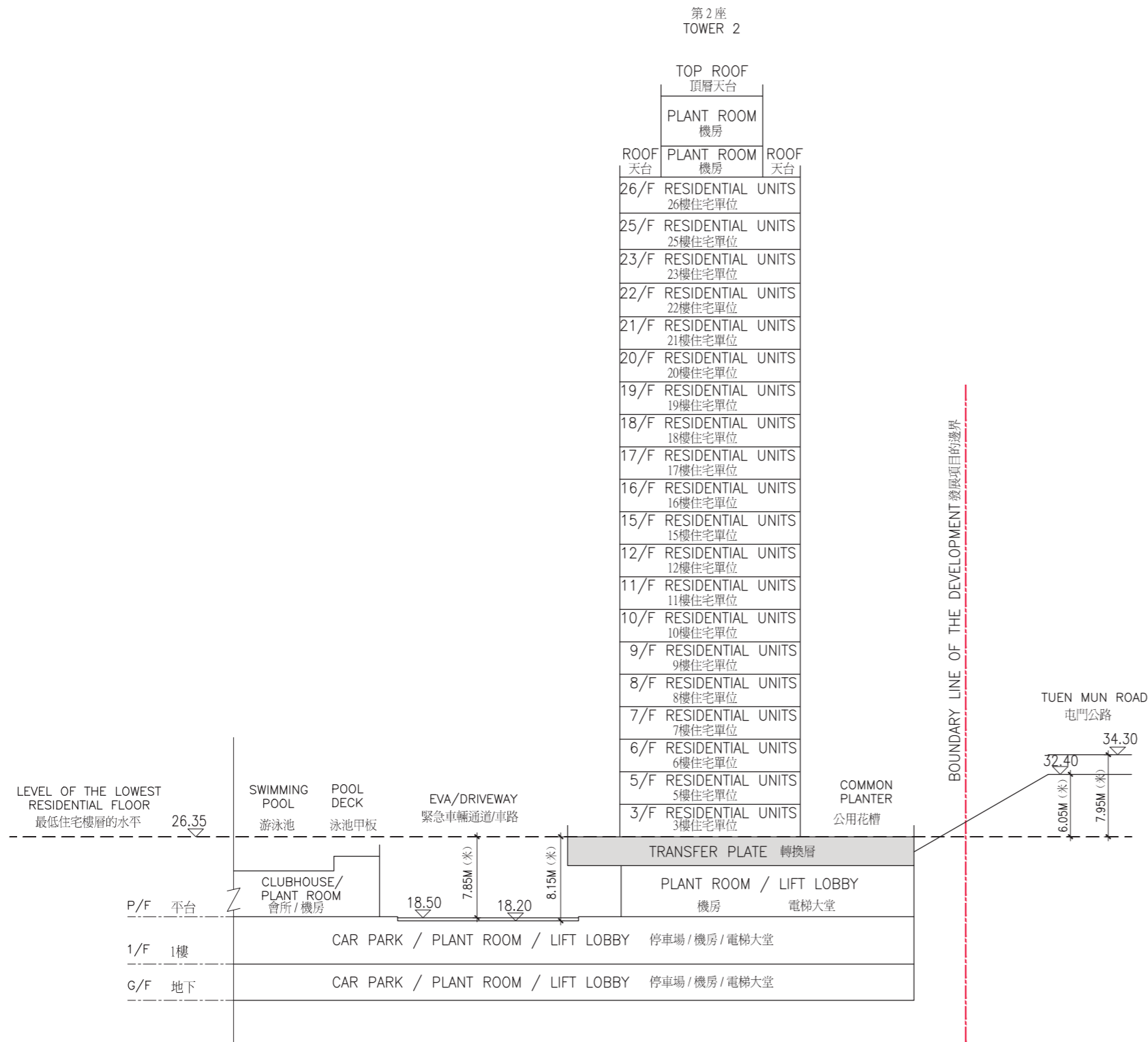
LEGEND 圖例

▽ Height in metres above the Hong Kong Principal Datum (HKPD) (in metres).
香港主水平基準以上的高度 (米)。

--- Dotted line denotes the level of the lowest residential floor of the building.
虛線為該建築物最底住宅樓層水平。

The part of Emergency Vehicular Access (EVA) / Driveway adjacent to the building is 18.20 metres above the Hong Kong Principal Datum.
毗連建築物的一段緊急車輛通道 / 車路為香港主水平基準以上 18.20 米。

The part of Driveway adjacent to the building is 18.50 metres to 19.00 metres above the Hong Kong Principal Datum.
毗連建築物的一段車路為香港主水平基準以上 18.50 米至 19.00 米。



LEGEND 圖例

▽ Height in metres above the Hong Kong Principal Datum (HKPD) (in metres).
香港主水平基準以上的高度 (米)。

--- Dotted line denotes the level of the lowest residential floor of the building.
虛線為該建築物最底住宅樓層水平。

The part of Emergency Vehicular Access (EVA) / Driveway adjacent to the building is 18.20 metres to 18.50 metres above the Hong Kong principal datum.
毗連建築物的一段緊急車輛通道 / 車路為香港主水平基準以上 18.20 米至 18.50 米。

The part of Tuen Mun Road adjacent to the building is 32.40 metres to 34.30 metres above the Hong Kong Principal Datum.
毗連建築物的一段屯門公路為香港主水平基準以上 32.40 米至 34.30 米。