

LEGEND OF THE TERMS AND ABBREVIATIONS USED ON FLOOR PLANS

樓面平面圖中所使用之名詞及簡稱之圖例

_ /F BUILDING LINE ABOVE	=	_ 樓上方建築線	COVER OF BAL. / U.P. / A.C.P.	= COVER OF BALCONY / UTILITY PLATFORM / AIR CONDITIONING PLATFORM	= 露台 / 工作平台 / 冷氣機平台上蓋
A.C.P.	=	AIR CONDITIONING PLATFORM	COVER OF BAL. / U.P. / A.C.P. (AT _ /F ONLY)	= COVER OF BALCONY / UTILITY PLATFORM / AIR CONDITIONING PLATFORM (AT _ /F ONLY)	= 露台 / 工作平台 / 冷氣機平台上蓋 (只設於 _ 樓)
A/C PLANT RM.	=	AIR CONDITIONING PLANT ROOM	COVER OF U.P.	= COVER OF UTILITY PLATFORM	= 工作平台上蓋
A/C UNIT FOR T1A _	=	AIR CONDITIONING UNIT FOR TOWER 1 (1A) _	COVER OF U.P. / A.C.P.	= COVER OF UTILITY PLATFORM / AIR CONDITIONING PLATFORM	= 工作平台 / 冷氣機平台上蓋
A/C UNIT FOR T1B _	=	AIR CONDITIONING UNIT FOR TOWER 1 (1B) _	COVER OF U.P. BELOW	= COVER OF UTILITY PLATFORM BELOW	= 下層工作平台上蓋
A/C UNIT FOR T2 _	=	AIR CONDITIONING UNIT FOR TOWER 2 _	DIN.	= DINING ROOM	= 飯廳
ACC. LIFT	=	ACCESSIBLE LIFT	DOG HOUSE		= 室外管道房
A.F.	=	ARCHITECTURAL FEATURE	DOG HOUSE FOR P.W. BELOW	= DOG HOUSE FOR PIPE WELL BELOW	= 下層天井室外管道房
A.S.D.	=	ACOUSTIC SLIDING DOOR	EAD	= EXHAUST AIR DUCT	= 排氣管道
AT _ /F ONLY		= 只設於 _ 樓	E.A.S.D. FOR _ /F ONLY	= ENHANCED ACOUSTIC SLIDING DOOR _ /F ONLY	= 強化減音趟門只設於 _ 樓
A.W.1. / A.W.2	=	ACOUSTIC WINDOW	ELECT. DUCT	= ELECTRIC DUCT	= 電氣槽
BAL.	=	BALCONY	ELECT. METER RM.	= ELECTRIC METER ROOM	= 電錶房
BAL. ABOVE	=	BALCONY ABOVE	ELV. DUCT	= EXTRA-LOW VOLTAGE DUCT	= 特低壓電槽
BAL. / U.P. / A.C.P. ABOVE	=	BALCONY / UTILITY PLATFORM / AIR CONDITIONING PLATFORM ABOVE	FAD	= FRESH AIR DUCT	= 鮮風管道
BATH	=	BATHROOM	FAN RM. / FAN ROOM	= FAN ROOM	= 風機房
BED RM.	=	BEDROOM	F.H.	= FIRE HYDRANT	= 消防柱
BED RM. _	=	BEDROOM _	FLAT ROOF		= 平台
BUILDING LINE ABOVE		= 上方建築線	FLAT ROOF BELOW		= 下層平台
CABD RM.	=	COMMUNAL AERIAL BROADCAST DISTRIBUTION ROOM	FLUSHING WATER PUMP RM.	= FLUSHING WATER PUMP ROOM	= 沖廁水泵房
COMMON PLANTER		= 公用花槽	FOR _ /F ONLY		= 只設於 _ 樓
COVER OF BAL.	=	COVER OF BALCONY	FOR _ /F - _ /F		= 設於 _ 樓至 _ 樓
COVER OF BAL (AT _ /F ONLY)	=	COVER OF BALCONY (AT _ /F ONLY)	GARDEN		= 花園
COVER OF BAL. BELOW	=	COVER OF BALCONY BELOW			

LEGEND OF THE TERMS AND ABBREVIATIONS USED ON FLOOR PLANS

樓面平面圖中所使用之名詞及簡稱之圖例

H.R.	= HOSE REEL	= 消防喉轆	M.L. BELOW	= METAL LOUVRE BELOW	= 下方金屬百葉
H.R. AT H/L	= HOSE REEL AT HIGH LEVEL	= 上方消防喉轆	M.W.	= MAINTENANCE WINDOW	= 維修窗戶
I.C.F.R.	= INACCESSIBLE COMMON FLAT ROOF	= 維修平台	ON-GRADE PLANTER		= 地面花槽
KIT.	= KITCHEN	= 廚房	OPEN KIT.	= OPEN KITCHEN	= 開放式廚房
LAV. _	= LAVATORY _	= 洗手間 _	PART PLAN AT _/F		= _樓部分平面圖
LIFT		= 升降機	PART PLAN AT _/F & _/F		= _樓及 _樓部分平面圖
LIFT LOBBY		= 升降機大堂	P.D.	= PIPE DUCT	= 管道槽
LIFT OVER-RUN		= 升降機槽	POTABLE & FLUSHING WATER PUMP RM.	= POTABLE & FLUSHING WATER PUMP ROOM	= 食水及沖廁水泵房
LIV.	= LIVING ROOM	= 客廳	POTABLE WATER PUMP RM.	= POTABLE WATER PUMP ROOM	= 食水泵房
LIV. / DIN.	= LIVING ROOM AND DINING ROOM	= 客廳及飯廳	P.W.	= PIPE WELL	= 天井
M. BATH	= MASTER BATHROOM	= 主人浴室	R.C.A.F.	= REINFORCED CONCRETE ARCHITECTURAL FEATURE	= 混凝土建築裝飾
M. BED RM.	= MASTER BEDROOM	= 主人睡房	R.C.A.F. ABOVE	= REINFORCED CONCRETE ARCHITECTURAL FEATURE ABOVE	= 上方混凝土建築裝飾
METAL A.F.	= METAL ARCHITECTURAL FEATURE	= 金屬建築裝飾	R.C. PLINTH	= REINFORCED CONCRETE PLINTH	= 混凝土基座
METAL A.F. ABOVE	= METAL ARCHITECTURAL FEATURE ABOVE	= 上方金屬建築裝飾	ROOF		= 天台
METAL A.F. ABOVE AT _/F	= METAL ARCHITECTURAL FEATURE ABOVE AT _/F	= 上方金屬建築裝飾於 _樓	ROOF BUILDING LINE ABOVE AT _/F ONLY		= 上方天台建築線於 _樓
METAL A.F. ABOVE AT TOP ROOF	= METAL ARCHITECTURAL FEATURE ABOVE AT TOP ROOF	= 天台上方金屬建築裝飾	R.S. & M.R.	= REFUSE STORAGE AND MATERIAL RECOVERY ROOM	= 垃圾及物料回收室
METAL A.F. AT _/F ONLY	= METAL ARCHITECTURAL FEATURE AT _/F ONLY	= 金屬建築裝飾只設於 _樓	S.A.M.	= SOUND ABSORPTIVE MATERIAL	= 吸音物料
METAL A.F. AT H/L	= METAL ARCHITECTURAL FEATURE AT HIGH LEVEL	= 上方金屬建築裝飾	S.C.D.	= SELF-CLOSING SWING DOOR	= 自動關閉掩門
METAL A.F. W/ ACCESS OPENING	= METAL ARCHITECTURAL FEATURE WITH ACCESS OPENING	= 金屬建築裝飾連檢修開口	SINK		= 洗滌盆
METAL A.F. W/ ACCESS OPENING (AT _/F ONLY)	= METAL ARCHITECTURAL FEATURE WITH ACCESS OPENING (AT _/F ONLY)	= 金屬建築裝飾連檢修開口 金屬建築裝飾只設於 _樓	STORE 1	= STORE ROOM 1	= 儲物室 1
M.L. AT H/L.	= METAL LOUVRE AT HIGH LEVEL	= 上方金屬百葉	STORE 2	= STORE ROOM 2	= 儲物室 2
M.L. AT H/L. FOR STAIR VENT	= METAL LOUVRE AT HIGH LEVEL FOR STAIR VENT	= 上方樓梯通風金屬百葉	STOVE		= 煮食爐

T1A	= TOWER 1 (1A)	= 第1座(1A)
T1B	= TOWER 1 (1B)	= 第1座(1B)
TO TOWER 1 (1A)		= 往第1座(1A)
TO TOWER 1 (1B)		= 往第1座(1B)
T.R.S.	= TEMPORARY REFUGE SPACE	= 臨時庇護處
UP		= 上
U.P.	= UTILITY PLATFORM	= 工作平台
U.P. ABOVE	= UTILITY PLATFORM ABOVE	= 上方工作平台
U.P. / A.C.P. ABOVE	= UTILITY PLATFORM / AIR CONDITIONING PLATFORM ABOVE	= 上方工作平台 / 冷氣機平台
WALK-IN CLOSET		= 衣帽間
W.M.C.	= WATER METER CABINET	= 水錶櫃
	= AIR CONDITIONING UNIT	= 冷氣機
	= DESIGNATED COMMON AREA IN DEED OF MUTUAL COVENANT FOR MAINTENANCE	= 公契中用作保養的特定公用地方

Notes applicable to the floor plans of this section:

1. There may be architectural features and/or exposed pipes on external walls of some floors.
2. Common pipes exposed and/ or enclosed in cladding are located at/ adjacent to balcony and/ or flat roof and/ or roof and/ or utility platform and/ or air-conditioning platform and/ or external wall of some units.
3. There are ceiling bulkheads or false ceiling at living room, dining room, bedroom, bathroom, store room, open kitchen and kitchen of some units for the air-conditioning system and/or mechanical and electrical services. There are sunken slabs for mechanical & electrical services of units above at some residential units.
4. The internal ceiling height within some units may vary due to structural, architectural and/ or decoration design variations.
5. Symbols of fittings and fitments shown on the floor plans, such as doors, bath tubs, basins, water closets, basin cabinets, sinks etc, are retrieved from the latest approved building plans and only for general indication of their approximate location, but not indications of their actual size, design, shape and quantity.
6. For some residential units, the air-conditioning platform(s) outside the residential unit will be placed with 1 or more air-conditioner(s) (Outdoor Unit). These air-conditioner(s) may generate heat and/ or sound.
7. Balconies and utility platforms are non-enclosed areas.
8. During the necessary maintenance of the external walls by manager of the Phase, the gondola will be operating in the airspace outside window of residential properties and above flat roof and roof in such tower.

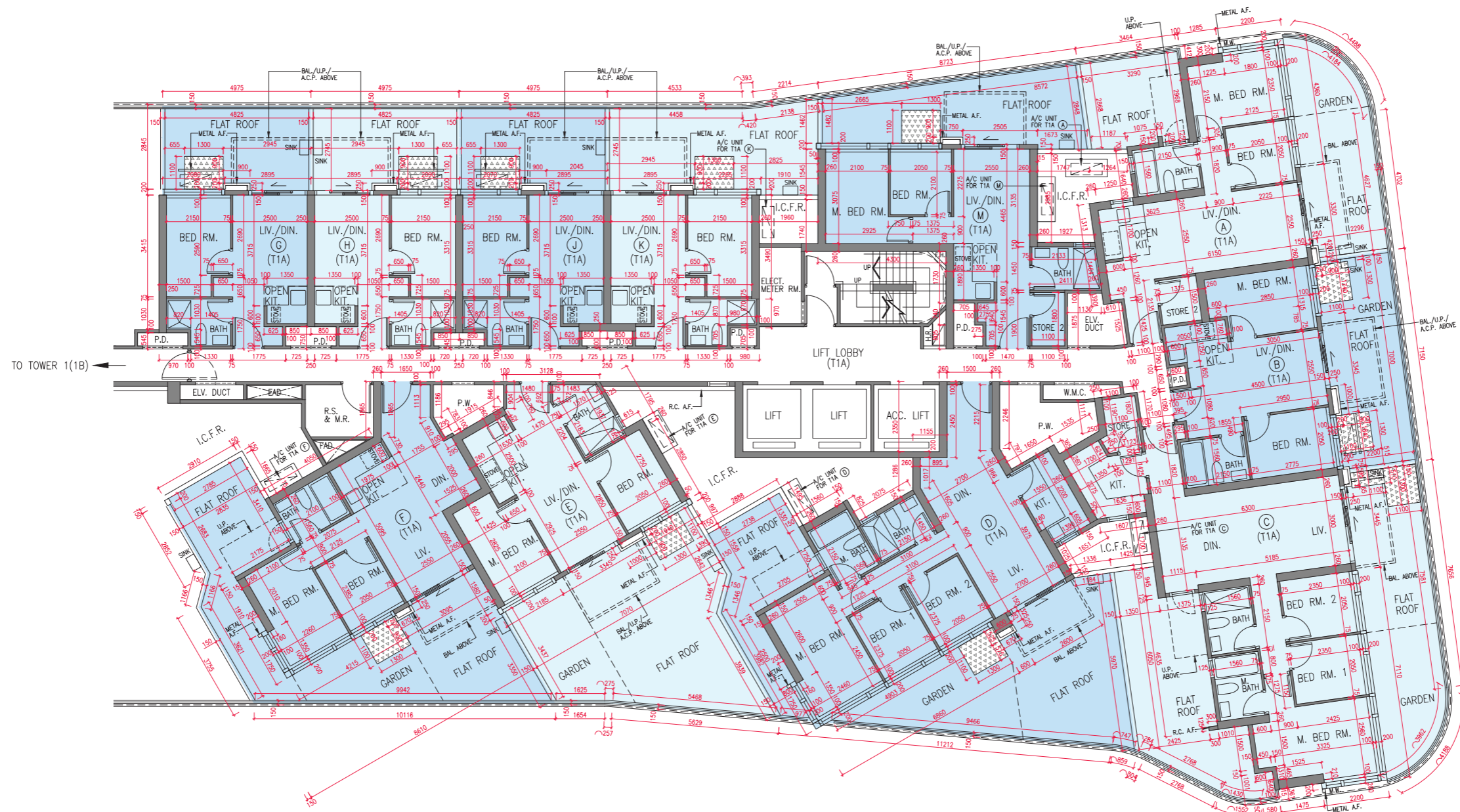
適用於本節各樓面平面圖之備註：

1. 部份樓層外牆設有建築裝飾及 / 或外露喉管。
2. 部份單位的露台及 / 或平台及 / 或天台及 / 或工作平台及 / 或冷氣機平台及 / 或外牆或其鄰近地方設有外露及 / 或內藏於飾板的公用喉管。
3. 部份單位客廳、飯廳、睡房、浴室、儲物室、開放式廚房及廚房有裝飾橫樑或假天花，用以裝置冷氣系統及 / 或機電設備。部分單位天花有跌級樓板，用以安裝樓上單位之機電設備。
4. 部份單位之天花高度將會因應結構、建築及 / 或裝修設計上的需要而有差異。
5. 樓面平面圖上所顯示的形象裝置符號，例如門、浴缸、洗面盆、坐廁、洗面盆櫃、洗滌盆等乃根據最新的經批准的建築圖則，只作一般性標誌以顯示其大約位置，而非展示其實際大小、設計、形狀及數量。
6. 部份住宅單位外的冷氣機平台將會放置一部或多部空調機(室外機)。該等空調機可能發出熱力及 / 或聲音。
7. 露台及工作平台為不可圍封的地方。
8. 在期數管理人員安排外牆之必要維修進行期間，吊船將在該等大廈的住宅物業之窗戶外及平台及天台上之空間運作。

TOWER 1 (1A)
第1座(1A)

3/F
3樓

FLOOR PLAN
樓面平面圖



Scale 0 5M/米
比例

Tower 座	Floor 樓層	Unit 單位	The thickness of the floor slabs (excluding plaster) of each residential property (mm) 每個住宅物業的樓板 (不包括灰泥) 的厚度 (毫米)	The floor-to-floor height of each residential property (mm) 每個住宅物業的層與層之間的高度 (毫米)
Tower 1 (1A) 第1座(1A)	3/F 3樓	A	150	2800, 3150
		B	150, 175	2800, 3150
		C	150	2850, 3150
		D	150	2800, 3150
		E	150, 175	2800, 3150
		F	150, 175	2800, 3150
		G	150, 175	2800, 2850, 3150
		H	150, 175	2800, 2850, 3150
		J	150, 175	2850, 3150
		K	150, 175	2850, 3150
		M	150	2850, 3150

The internal areas of the residential properties on the upper floors will generally be slightly larger than those on the lower floors because of the reducing thickness of the structural walls on the upper floors.

Notes:

1. The dimensions in the floor plan are all structural dimensions in millimeter.
2. Please refer to pages 23 to 25 of this sales brochure for legend of the terms and abbreviations and guidance notes in studying the floor plans of this section.

因住宅物業的較高樓層的結構牆的厚度遞減，較高樓層的內部面積，一般比較低樓層的內部面積稍大。

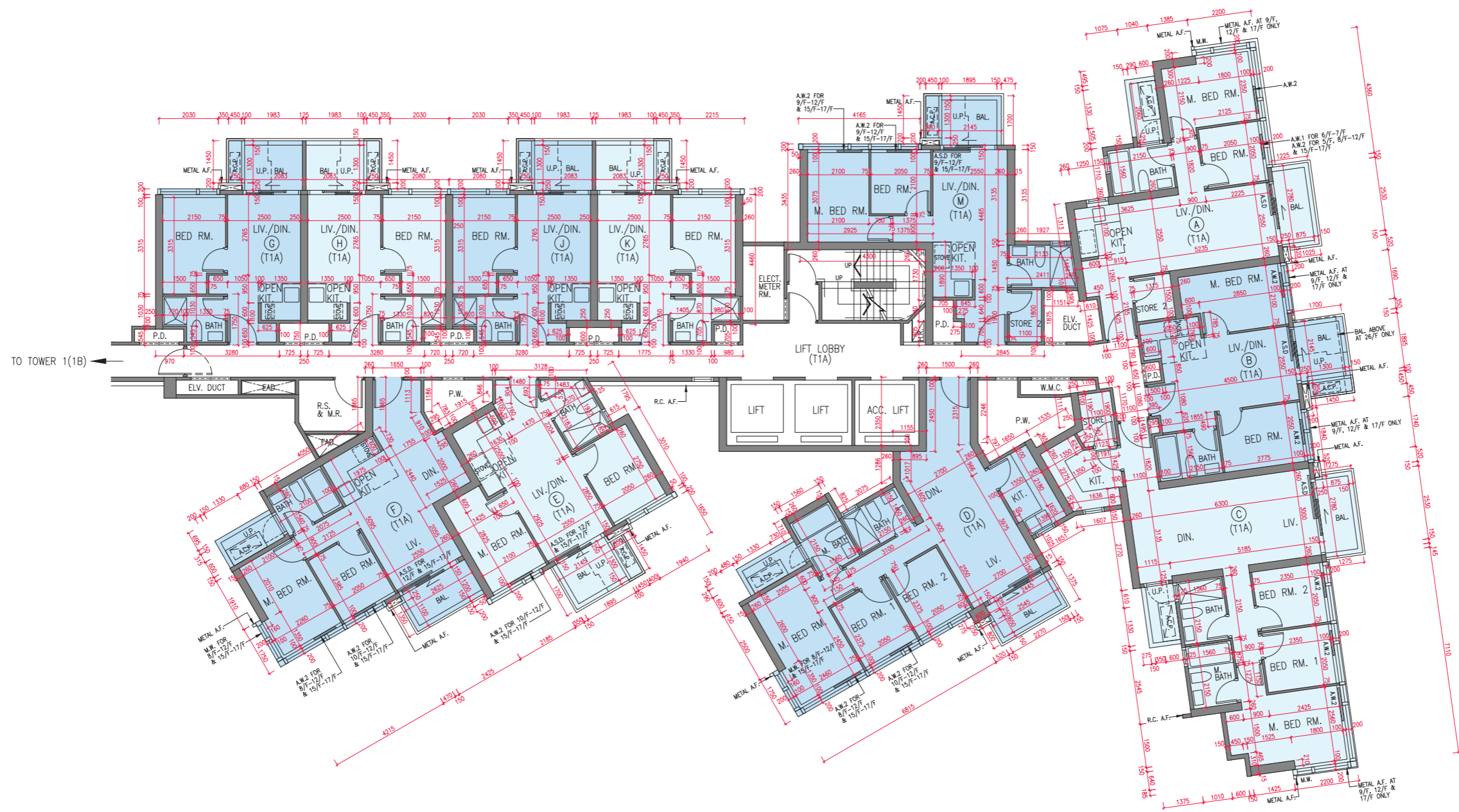
備註：

1. 平面圖所列之數字為以毫米標示之建築結構尺寸。
2. 請參閱本售樓說明書第 23 至 25 頁之圖例及指引以協助解讀此部分的平面圖及其顯示之名稱及簡稱。

TOWER 1 (1A)
第1座(1A)

5/F - 12/F & 15/F - 17/F
5樓至12樓及15樓至17樓

FLOOR PLAN
樓面平面圖



Scale 0 5M/米
比例 0 5M/米

Tower 座	Floor 樓層	Unit 單位	The thickness of the floor slabs (excluding plaster) of each residential property (mm) 每個住宅物業的樓板(不包括灰泥)的厚度(毫米)	The floor-to-floor height of each residential property (mm) 每個住宅物業的層與層之間的高度(毫米)
Tower 1 (1A) 第1座(1A)	5/F - 12/F & 15/F - 16/F 5樓至12樓 及 15樓至16樓	A	150	3150
		B	150, 175	3150
		C	150	3150
		D	150	3150
		E	150, 175	3150
		F	150, 175	3150
		G	150, 175	3150
		H	150, 175	3150
		J	150, 175	3150
		K	150, 175	3150
		M	150	3150
	17/F 17樓	A	150	2800, 3150
		B	150, 175	3150, 3500
		C	150	3150
		D	150	3150
		E	150, 175	3150
		F	150, 175	3150
		G	150, 175	3150
		H	150, 175	3150
		J	150, 175	3150
		K	150, 175	3150
		M	150	3150

The internal areas of the residential properties on the upper floors will generally be slightly larger than those on the lower floors because of the reducing thickness of the structural walls on the upper floors.

Notes:

- The dimensions in the floor plan are all structural dimensions in millimeter.
- Please refer to pages 23 to 25 of this sales brochure for legend of the terms and abbreviations and guidance notes in studying the floor plans of this section.

因住宅物業的較高樓層的結構牆的厚度遞減，較高樓層的內部面積，一般比較低樓層的內部面積稍大。

備註：

- 平面圖所列之數字為以毫米標示之建築結構尺寸。
- 請參閱本售樓說明書第23至25頁之圖例及指引以協助解讀此部分的平面圖及其顯示之名稱及簡稱。

TOWER 1 (1A)
第1座(1A)

18/F - 23/F & 25/F
18樓至23樓及25樓

FLOOR PLAN
樓面平面圖



Scale 0 5M/米
比例

Tower 座	Floor 樓層	Unit 單位	The thickness of the floor slabs (excluding plaster) of each residential property (mm) 每個住宅物業的樓板 (不包括灰泥) 的厚度 (毫米)	The floor-to-floor height of each residential property (mm) 每個住宅物業的層與層之間的高度 (毫米)
Tower 1 (1A) 第1座(1A)	18/F - 21/F 18樓至21樓	A	150, 175	3150
		C	150, 175	3150
		D	150	3150
		E	150, 175	3150
		F	150, 175	3150
		G	150, 175	3150
		H	150, 175	3150
		J	150, 175	3150
		K	150, 175	3150
	M	150	3150	
	22/F - 23/F 22樓至23樓	A	150, 175	3275
		C	150, 175	3275
		D	150	3275
		E	150, 175	3275
		F	150, 175	3275
		G	150, 175	3275
		H	150, 175	3275
		J	150, 175	3275
		K	150, 175	3275
M	150	3275		

The internal areas of the residential properties on the upper floors will generally be slightly larger than those on the lower floors because of the reducing thickness of the structural walls on the upper floors.

Notes:

1. The dimensions in the floor plan are all structural dimensions in millimeter.
2. Please refer to pages 23 to 25 of this sales brochure for legend of the terms and abbreviations and guidance notes in studying the floor plans of this section.

因住宅物業的較高樓層的結構牆的厚度遞減，較高樓層的內部面積，一般比較低樓層的內部面積稍大。

備註：

1. 平面圖所列之數字為以毫米標示之建築結構尺寸。
2. 請參閱本售樓說明書第 23 至 25 頁之圖例及指引以協助解讀此部分的平面圖及其顯示之名稱及簡稱。

Tower 座	Floor 樓層	Unit 單位	The thickness of the floor slabs (excluding plaster) of each residential property (mm) 每個住宅物業的樓板(不包括灰泥)的厚度(毫米)	The floor-to-floor height of each residential property (mm) 每個住宅物業的層與層之間的高度(毫米)
Tower 1 (1A) 第1座(1A)	25/F 25樓	A	150, 175	3150, 3500
		C	150, 200	3250, 3500, 3550
		D	150	3500
		E	150, 175	3500
		F	150, 175	3500
		G	150, 175	3500
		H	150, 175	3500
		J	150, 175	3500
		K	150, 175	3500
		M	150	3500

The internal areas of the residential properties on the upper floors will generally be slightly larger than those on the lower floors because of the reducing thickness of the structural walls on the upper floors.

Notes:

1. The dimensions in the floor plan are all structural dimensions in millimeter.
2. Please refer to pages 23 to 25 of this sales brochure for legend of the terms and abbreviations and guidance notes in studying the floor plans of this section.

因住宅物業的較高樓層的結構牆的厚度遞減，較高樓層的內部面積，一般比較低樓層的內部面積稍大。

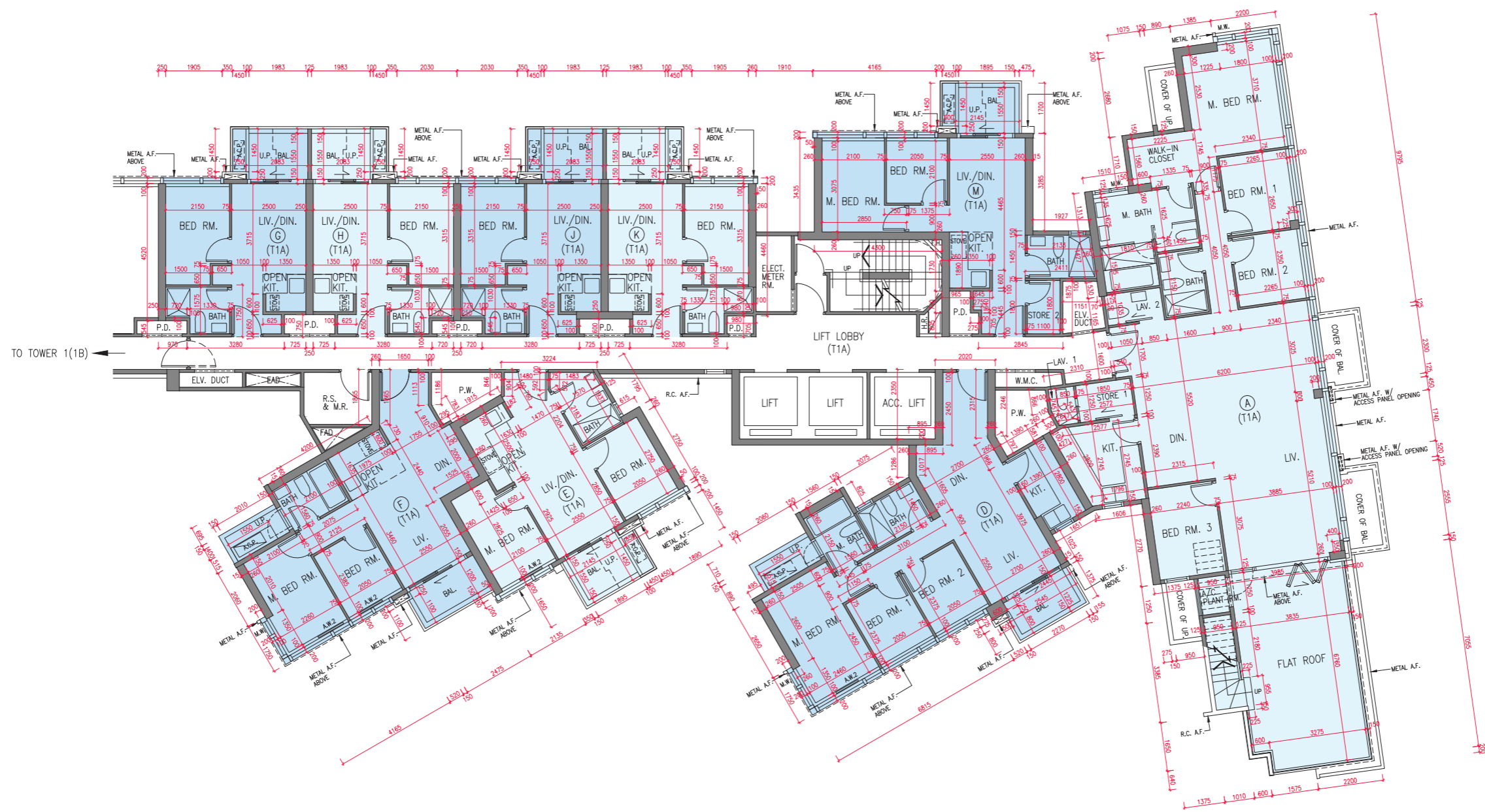
備註：

1. 平面圖所列之數字為以毫米標示之建築結構尺寸。
2. 請參閱本售樓說明書第 23 至 25 頁之圖例及指引以協助解讀此部分的平面圖及其顯示之名稱及簡稱。

TOWER 1 (1A)
第1座(1A)

26/F
26樓

FLOOR PLAN
樓面平面圖



Scale 0 5M/米
比例

Tower 座	Floor 樓層	Unit 單位	The thickness of the floor slabs (excluding plaster) of each residential property (mm) 每個住宅物業的樓板 (不包括灰泥) 的厚度 (毫米)	The floor-to-floor height of each residential property (mm) 每個住宅物業的層與層之間的高度 (毫米)
Tower 1 (1A) 第1座 (1A)	26/F 26樓	A	150, 175	3500, 3800, 3850
		D	150	3500, 3800
		E	150, 175	3500, 3800
		F	150, 175	3500, 3850
		G	150, 175	3500, 3800, 3850
		H	150, 175	3500, 3800, 3850
		J	150, 175	3500, 3800
		K	150, 175	3500, 3800
		M	150	3500, 3800

The internal areas of the residential properties on the upper floors will generally be slightly larger than those on the lower floors because of the reducing thickness of the structural walls on the upper floors.

Notes:

1. The dimensions in the floor plan are all structural dimensions in millimeter.
2. Please refer to pages 23 to 25 of this sales brochure for legend of the terms and abbreviations and guidance notes in studying the floor plans of this section.

因住宅物業的較高樓層的結構牆的厚度遞減，較高樓層的內部面積，一般比較低樓層的內部面積稍大。

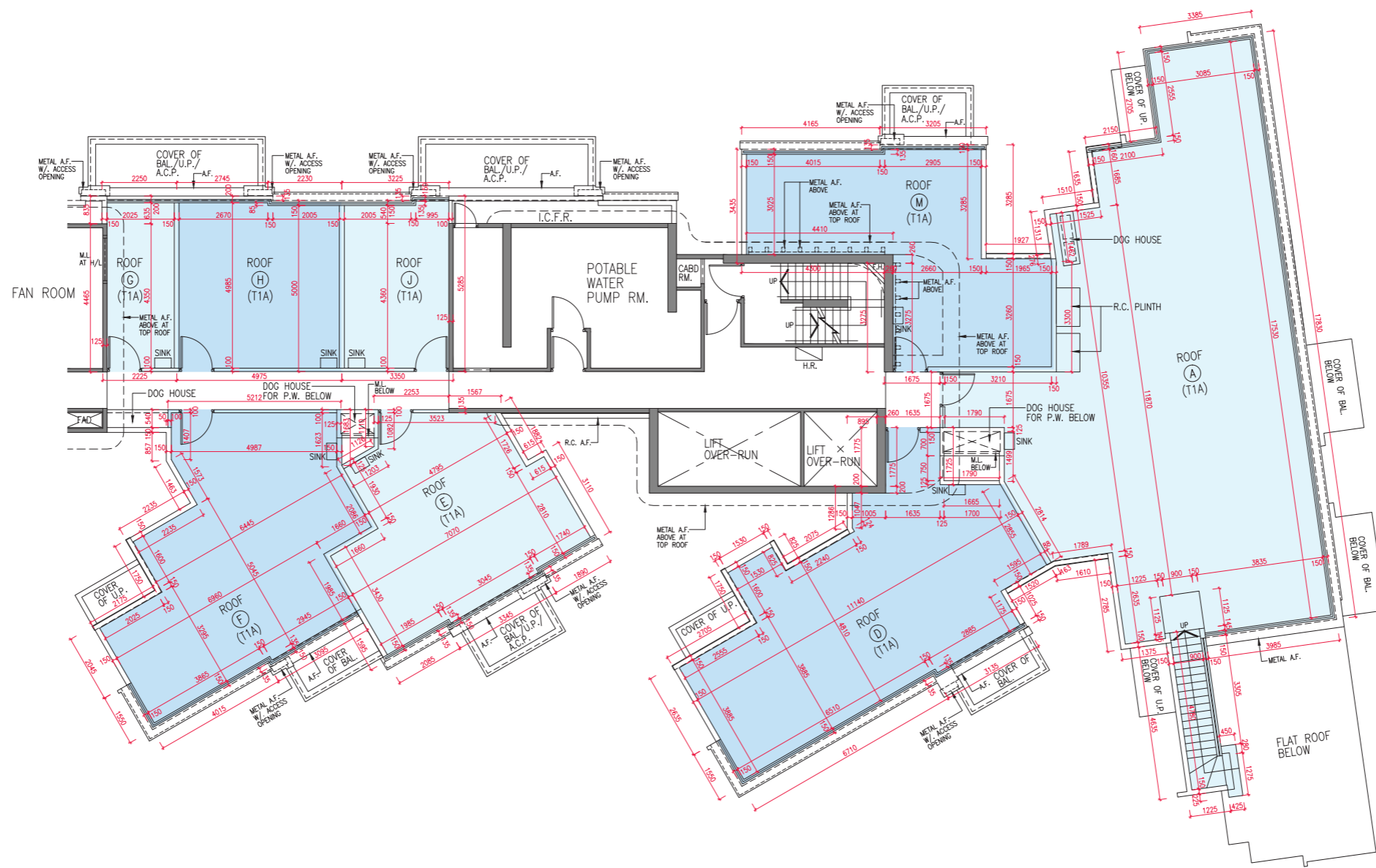
備註：

1. 平面圖所列之數字為以毫米標示之建築結構尺寸。
2. 請參閱本售樓說明書第 23 至 25 頁之圖例及指引以協助解讀此部分的平面圖及其顯示之名稱及簡稱。

TOWER 1 (1A)
第1座(1A)

ROOF
天台

FLOOR PLAN
樓面平面圖



Scale 0 5M/米
比例

Tower 座	Floor 樓層	Unit 單位	The thickness of the floor slabs (excluding plaster) of each residential property (mm) 每個住宅物業的樓板 (不包括灰泥) 的厚度 (毫米)	The floor-to-floor height of each residential property (mm) 每個住宅物業的層與層之間的高度 (毫米)
Tower 1 (1A) 第1座 (1A)	Roof 天台	A	Not Applicable 不適用	Not Applicable 不適用
		D		
		E		
		F		
		G		
		H		
		J		
		K		
		M		

The internal areas of the residential properties on the upper floors will generally be slightly larger than those on the lower floors because of the reducing thickness of the structural walls on the upper floors.

Notes:

1. The dimensions in the floor plan are all structural dimensions in millimeter.
2. Please refer to pages 23 to 25 of this sales brochure for legend of the terms and abbreviations and guidance notes in studying the floor plans of this section.

因住宅物業的較高樓層的結構牆的厚度遞減，較高樓層的內部面積，一般比較低樓層的內部面積稍大。

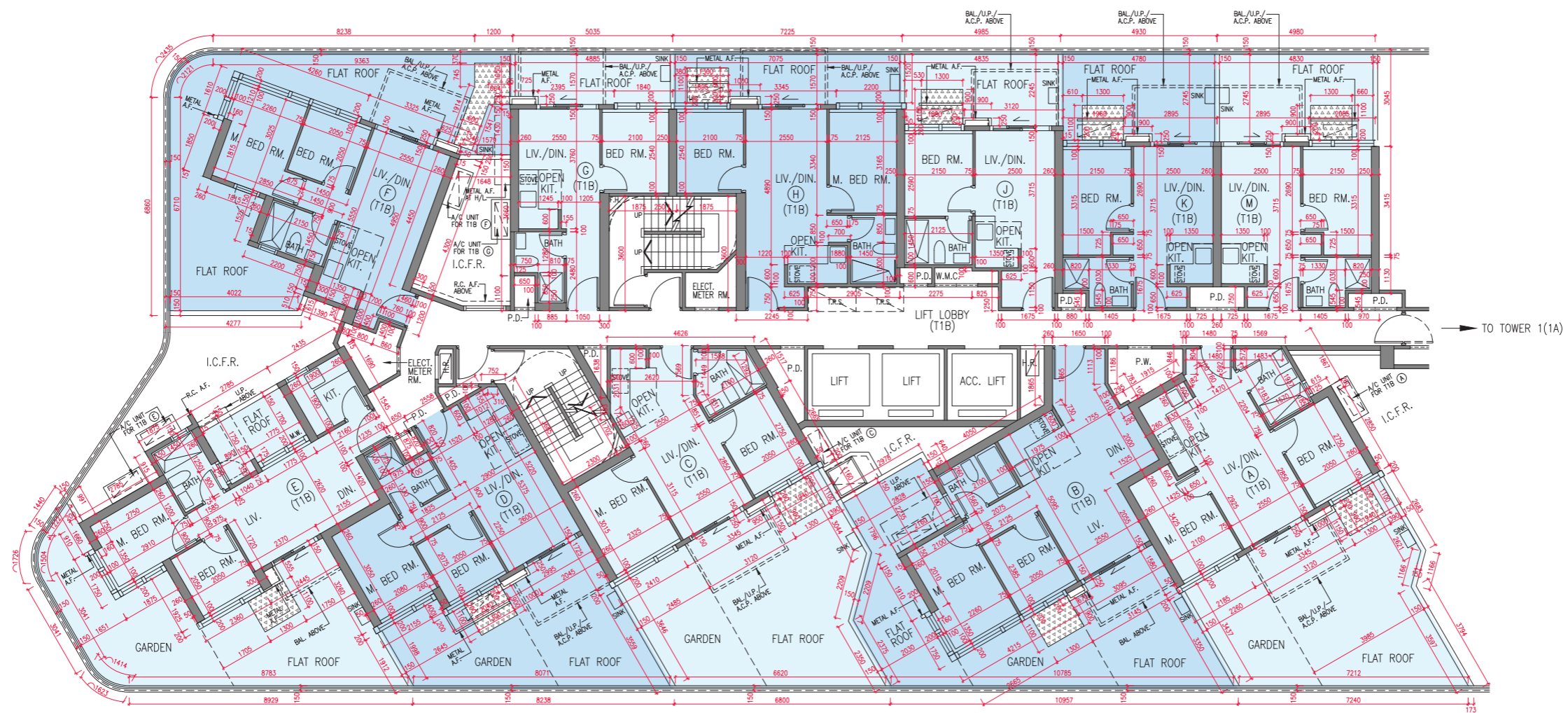
備註：

1. 平面圖所列之數字為以毫米標示之建築結構尺寸。
2. 請參閱本售樓說明書第 23 至 25 頁之圖例及指引以協助解讀此部分的平面圖及其顯示之名稱及簡稱。

TOWER 1 (1B)
第1座(1B)

3/F
3樓

FLOOR PLAN
樓面平面圖



Scale 0 5M/米
比例

Tower 座	Floor 樓層	Unit 單位	The thickness of the floor slabs (excluding plaster) of each residential property (mm) 每個住宅物業的樓板 (不包括灰泥) 的厚度 (毫米)	The floor-to-floor height of each residential property (mm) 每個住宅物業的層與層之間的高度 (毫米)
Tower 1 (1B) 第1座(1B)	3/F 3樓	A	150, 175	2850, 3150
		B	150, 175	2800, 3150
		C	150, 175	2800, 2850, 3150
		D	150, 175	2850, 3150
		E	150	2850, 2950, 3150
		F	150	2850, 3150
		G	150	2850, 3150
		H	150, 200	2800, 3150
		J	150, 175	2800, 3150
		K	150, 175	2800, 3150
		M	150, 175	2800, 2850, 3150

The internal areas of the residential properties on the upper floors will generally be slightly larger than those on the lower floors because of the reducing thickness of the structural walls on the upper floors.

Notes:

1. The dimensions in the floor plan are all structural dimensions in millimeter.
2. Please refer to pages 23 to 25 of this sales brochure for legend of the terms and abbreviations and guidance notes in studying the floor plans of this section.

因住宅物業的較高樓層的結構牆的厚度遞減，較高樓層的內部面積，一般比較低樓層的內部面積稍大。

備註：

1. 平面圖所列之數字為以毫米標示之建築結構尺寸。
2. 請參閱本售樓說明書第 23 至 25 頁之圖例及指引以協助解讀此部分的平面圖及其顯示之名稱及簡稱。

TOWER 1 (1B)
第1座(1B)

5/F - 12/F & 15/F - 17/F
5樓至12樓及15樓至17樓

FLOOR PLAN
樓面平面圖



Scale 0 5M/米
比例

Tower 座	Floor 樓層	Unit 單位	The thickness of the floor slabs (excluding plaster) of each residential property (mm) 每個住宅物業的樓板 (不包括灰泥) 的厚度 (毫米)	The floor-to-floor height of each residential property (mm) 每個住宅物業的層與層之間的高度 (毫米)
Tower 1 (1B) 第1座(1B)	5/F - 12/F & 15/F - 17/F 5樓至12樓 及 15樓至17樓	A	150, 175	3150
		B	150, 175	3150
		C	150, 175	3150
		D	150, 175	3150
		E	150	3150
		F	150	3150
		G	150	3150
		H	150, 200	3150
		J	150, 175	3150
		K	150, 175	3150
		M	150, 175	3150

The internal areas of the residential properties on the upper floors will generally be slightly larger than those on the lower floors because of the reducing thickness of the structural walls on the upper floors.

Notes:

1. The dimensions in the floor plan are all structural dimensions in millimeter.
2. Please refer to pages 23 to 25 of this sales brochure for legend of the terms and abbreviations and guidance notes in studying the floor plans of this section.

因住宅物業的較高樓層的結構牆的厚度遞減，較高樓層的內部面積，一般比較低樓層的內部面積稍大。

備註：

1. 平面圖所列之數字為以毫米標示之建築結構尺寸。
2. 請參閱本售樓說明書第 23 至 25 頁之圖例及指引以協助解讀此部分的平面圖及其顯示之名稱及簡稱。

TOWER 1 (1B)
第1座(1B)

18/F - 23/F & 25/F
18樓至23樓及25樓

FLOOR PLAN
樓面平面圖



Tower 座	Floor 樓層	Unit 單位	The thickness of the floor slabs (excluding plaster) of each residential property (mm) 每個住宅物業的樓板(不包括灰泥)的厚度(毫米)	The floor-to-floor height of each residential property (mm) 每個住宅物業的層與層之間的高度(毫米)
Tower 1 (1B) 第1座(1B)	18/F - 21/F 18樓至21樓	A	150, 175	3150
		B	150, 175	3150
		C	150, 175	3150
		D	150, 175	3150
		E	150	3150
		F	150	3150
		G	150	3150
		H	150, 200	3150
		J	150, 175	3150
		K	150, 175	3150
		M	150, 175	3150
	22/F - 23/F 22樓至23樓	A	150, 175	3275
		B	150, 175	3275
		C	150, 175	3275
		D	150, 175	3275
		E	150	3275
		F	150	3275
		G	150	3275
		H	150, 200	3275
		J	150, 175	3275
		K	150, 175	3275
		M	150, 175	3275

The internal areas of the residential properties on the upper floors will generally be slightly larger than those on the lower floors because of the reducing thickness of the structural walls on the upper floors.

Notes:

1. The dimensions in the floor plan are all structural dimensions in millimeter.
2. Please refer to pages 23 to 25 of this sales brochure for legend of the terms and abbreviations and guidance notes in studying the floor plans of this section.

因住宅物業的較高樓層的結構牆的厚度遞減，較高樓層的內部面積，一般比較低樓層的內部面積稍大。

備註：

1. 平面圖所列之數字為以毫米標示之建築結構尺寸。
2. 請參閱本售樓說明書第23至25頁之圖例及指引以協助解讀此部分的平面圖及其顯示之名稱及簡稱。

Tower 座	Floor 樓層	Unit 單位	The thickness of the floor slabs (excluding plaster) of each residential property (mm) 每個住宅物業的樓板 (不包括灰泥) 的厚度 (毫米)	The floor-to-floor height of each residential property (mm) 每個住宅物業的層與層之間的高度 (毫米)
Tower 1 (1B) 第1座(1B)	25/F 25樓	A	150, 175	3500
		B	150, 175	3500
		C	150, 175	3500
		D	150, 175	3500
		E	150	3500
		F	150	3500
		G	150	3500
		H	150, 200	3500
		J	150, 175	3500
		K	150, 175	3500
		M	150, 175	3500

The internal areas of the residential properties on the upper floors will generally be slightly larger than those on the lower floors because of the reducing thickness of the structural walls on the upper floors.

Notes:

1. The dimensions in the floor plan are all structural dimensions in millimeter.
2. Please refer to pages 23 to 25 of this sales brochure for legend of the terms and abbreviations and guidance notes in studying the floor plans of this section.

因住宅物業的較高樓層的結構牆的厚度遞減，較高樓層的內部面積，一般比較低樓層的內部面積稍大。

備註：

1. 平面圖所列之數字為以毫米標示之建築結構尺寸。
2. 請參閱本售樓說明書第 23 至 25 頁之圖例及指引以協助解讀此部分的平面圖及其顯示之名稱及簡稱。

TOWER 1 (1B)
第1座(1B)

26/F
26樓

FLOOR PLAN
樓面平面圖



Scale 0 5M/米
比例

Tower 座	Floor 樓層	Unit 單位	The thickness of the floor slabs (excluding plaster) of each residential property (mm) 每個住宅物業的樓板 (不包括灰泥) 的厚度 (毫米)	The floor-to-floor height of each residential property (mm) 每個住宅物業的層與層之間的高度 (毫米)
Tower 1 (1B) 第1座(1B)	26/F 26樓	A	150, 175	3500, 3800
		B	150, 175	3500, 3850
		C	150, 175	3500, 3800, 3850
		D	150, 175	3500, 3800
		E	150	3500, 3700, 3800
		F	150	3500, 3800
		G	150	3500, 3800
		H	150	3500, 3850
		J	150, 175	3500, 3850
		K	150, 175	3500, 3800, 3850
		M	150, 175	3500, 3800, 3850

The internal areas of the residential properties on the upper floors will generally be slightly larger than those on the lower floors because of the reducing thickness of the structural walls on the upper floors.

Notes:

1. The dimensions in the floor plan are all structural dimensions in millimeter.
2. Please refer to pages 23 to 25 of this sales brochure for legend of the terms and abbreviations and guidance notes in studying the floor plans of this section.

因住宅物業的較高樓層的結構牆的厚度遞減，較高樓層的內部面積，一般比較低樓層的內部面積稍大。

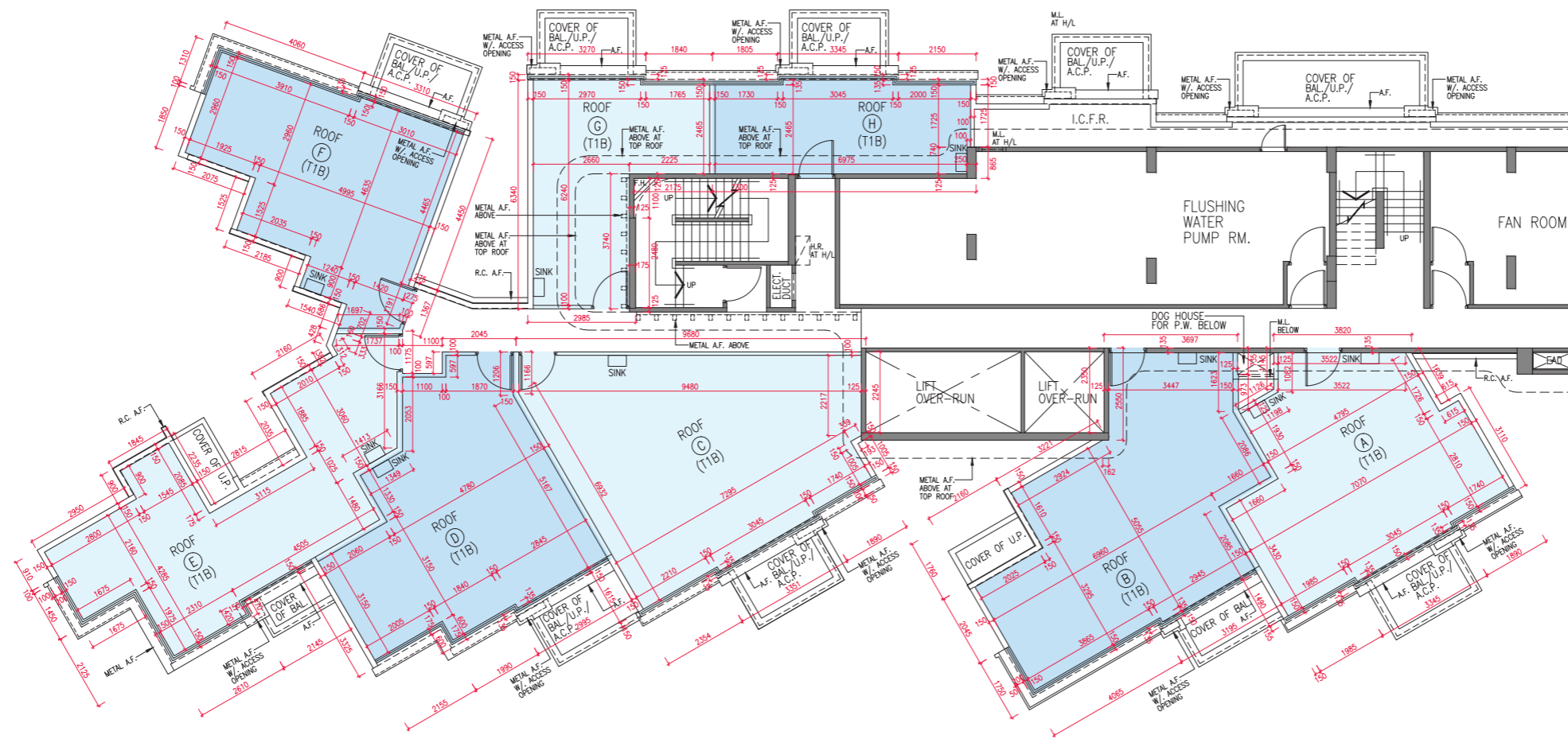
備註：

1. 平面圖所列之數字為以毫米標示之建築結構尺寸。
2. 請參閱本售樓說明書第 23 至 25 頁之圖例及指引以協助解讀此部分的平面圖及其顯示之名稱及簡稱。

TOWER 1 (1B)
第1座(1B)

ROOF
天台

FLOOR PLAN
樓面平面圖



Scale 0 5M/米
比例

Tower 座	Floor 樓層	Unit 單位	The thickness of the floor slabs (excluding plaster) of each residential property (mm) 每個住宅物業的樓板 (不包括灰泥) 的厚度 (毫米)	The floor-to-floor height of each residential property (mm) 每個住宅物業的層與層之間的高度 (毫米)
Tower 1 (1B) 第1座(1B)	Roof 天台	A	Not Applicable 不適用	Not Applicable 不適用
		B		
		C		
		D		
		E		
		F		
		G		
		H		
		J		
		K		
		M		

The internal areas of the residential properties on the upper floors will generally be slightly larger than those on the lower floors because of the reducing thickness of the structural walls on the upper floors.

Notes:

1. The dimensions in the floor plan are all structural dimensions in millimeter.
2. Please refer to pages 23 to 25 of this sales brochure for legend of the terms and abbreviations and guidance notes in studying the floor plans of this section.

因住宅物業的較高樓層的結構牆的厚度遞減，較高樓層的內部面積，一般比較低樓層的內部面積稍大。

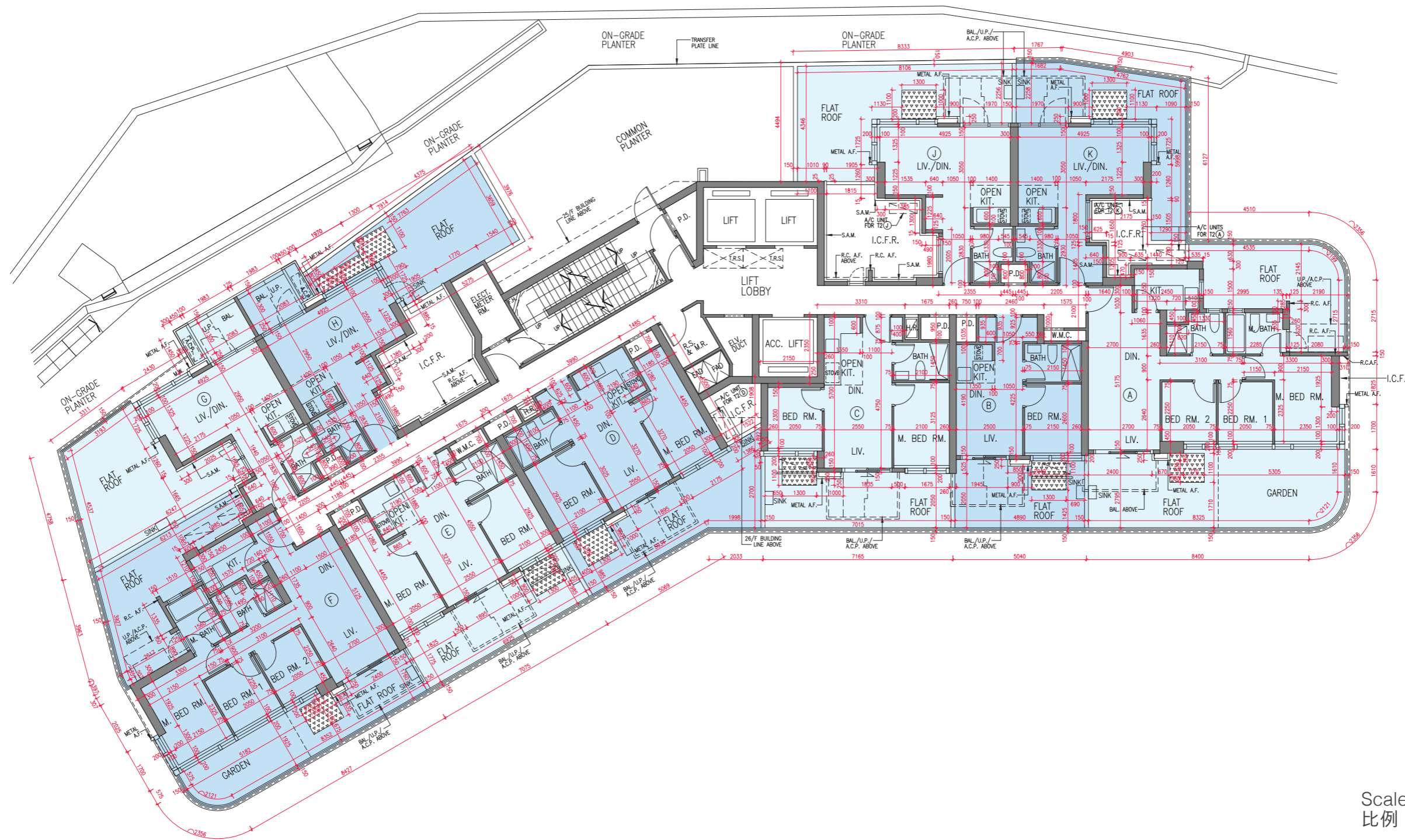
備註：

1. 平面圖所列之數字為以毫米標示之建築結構尺寸。
2. 請參閱本售樓說明書第 23 至 25 頁之圖例及指引以協助解讀此部分的平面圖及其顯示之名稱及簡稱。

TOWER 2
第2座

3/F
3樓

FLOOR PLAN
樓面平面圖



Scale 0 5M/米
比例

Tower 座	Floor 樓層	Unit 單位	The thickness of the floor slabs (excluding plaster) of each residential property (mm) 每個住宅物業的樓板 (不包括灰泥) 的厚度 (毫米)	The floor-to-floor height of each residential property (mm) 每個住宅物業的層與層之間的高度 (毫米)
Tower 2 第2座	3/F 3樓	A	150	2850, 3150
		B	150, 175	2800, 3150
		C	150, 175	2800, 2850, 3150
		D	150, 175	2850, 3150
		E	150, 175	2850, 3150
		F	150	2800, 3150
		G	150	2850, 3150
		H	150	2850, 3150
		J	150	2850, 3150
		K	150	2850, 3150

The internal areas of the residential properties on the upper floors will generally be slightly larger than those on the lower floors because of the reducing thickness of the structural walls on the upper floors.

Notes:

- The dimensions in the floor plan are all structural dimensions in millimeter.
- Please refer to pages 23 to 25 of this sales brochure for legend of the terms and abbreviations and guidance notes in studying the floor plans of this section.

因住宅物業的較高樓層的結構牆的厚度遞減，較高樓層的內部面積，一般比較低樓層的內部面積稍大。

備註：

- 平面圖所列之數字為以毫米標示之建築結構尺寸。
- 請參閱本售樓說明書第 23 至 25 頁之圖例及指引以協助解讀此部分的平面圖及其顯示之名稱及簡稱。

TOWER 2
第2座

5/F - 12/F, 15/F - 23/F & 25/F - 26/F
5樓至12樓、15樓至23樓及25樓至26樓

FLOOR PLAN
樓面平面圖



Tower 座	Floor 樓層	Unit 單位	The thickness of the floor slabs (excluding plaster) of each residential property (mm) 每個住宅物業的樓板(不包括灰泥)的厚度(毫米)	The floor-to-floor height of each residential property (mm) 每個住宅物業的層與層之間的高度(毫米)
Tower 2 第2座	5/F - 23/F 5樓至23樓	A	150	3150
		B	150, 175	3150
		C	150, 175	3150
		D	150, 175	3150
		E	150, 175	3150
		F	150	3150
		G	150	3150
		H	150	3150
		J	150	3150
		K	150	3150
	25/F 25樓	A	150	3450
		B	150, 175	3450
		C	150, 175	3450
		D	150, 175	3450
		E	150, 175	3450
		F	150	3450
		G	150	3450
		H	150	3450
		J	150	3450
K	150	3450		

The internal areas of the residential properties on the upper floors will generally be slightly larger than those on the lower floors because of the reducing thickness of the structural walls on the upper floors.

Notes:

- The dimensions in the floor plan are all structural dimensions in millimeter.
- Please refer to pages 23 to 25 of this sales brochure for legend of the terms and abbreviations and guidance notes in studying the floor plans of this section.

因住宅物業的較高樓層的結構牆的厚度遞減，較高樓層的內部面積，一般比較低樓層的內部面積稍大。

備註：

- 平面圖所列之數字為以毫米標示之建築結構尺寸。
- 請參閱本售樓說明書第23至25頁之圖例及指引以協助解讀此部分的平面圖及其顯示之名稱及簡稱。

Tower 座	Floor 樓層	Unit 單位	The thickness of the floor slabs (excluding plaster) of each residential property (mm) 每個住宅物業的樓板 (不包括灰泥) 的厚度 (毫米)	The floor-to-floor height of each residential property (mm) 每個住宅物業的層與層之間的高度 (毫米)
Tower 2 第2座	26/F 26樓	A	150	3500, 3800
		B	150, 175	3500, 3850
		C	150, 175	3500, 3800, 3850
		D	150, 175	3500, 3800
		E	150, 175	3500, 3800
		F	150	3500, 3850
		G	150	3500, 3800
		H	150	3500, 3800
		J	150	3500, 3800
		K	150	3500, 3800

The internal areas of the residential properties on the upper floors will generally be slightly larger than those on the lower floors because of the reducing thickness of the structural walls on the upper floors.

Notes:

1. The dimensions in the floor plan are all structural dimensions in millimeter.
2. Please refer to pages 23 to 25 of this sales brochure for legend of the terms and abbreviations and guidance notes in studying the floor plans of this section.

因住宅物業的較高樓層的結構牆的厚度遞減，較高樓層的內部面積，一般比較低樓層的內部面積稍大。

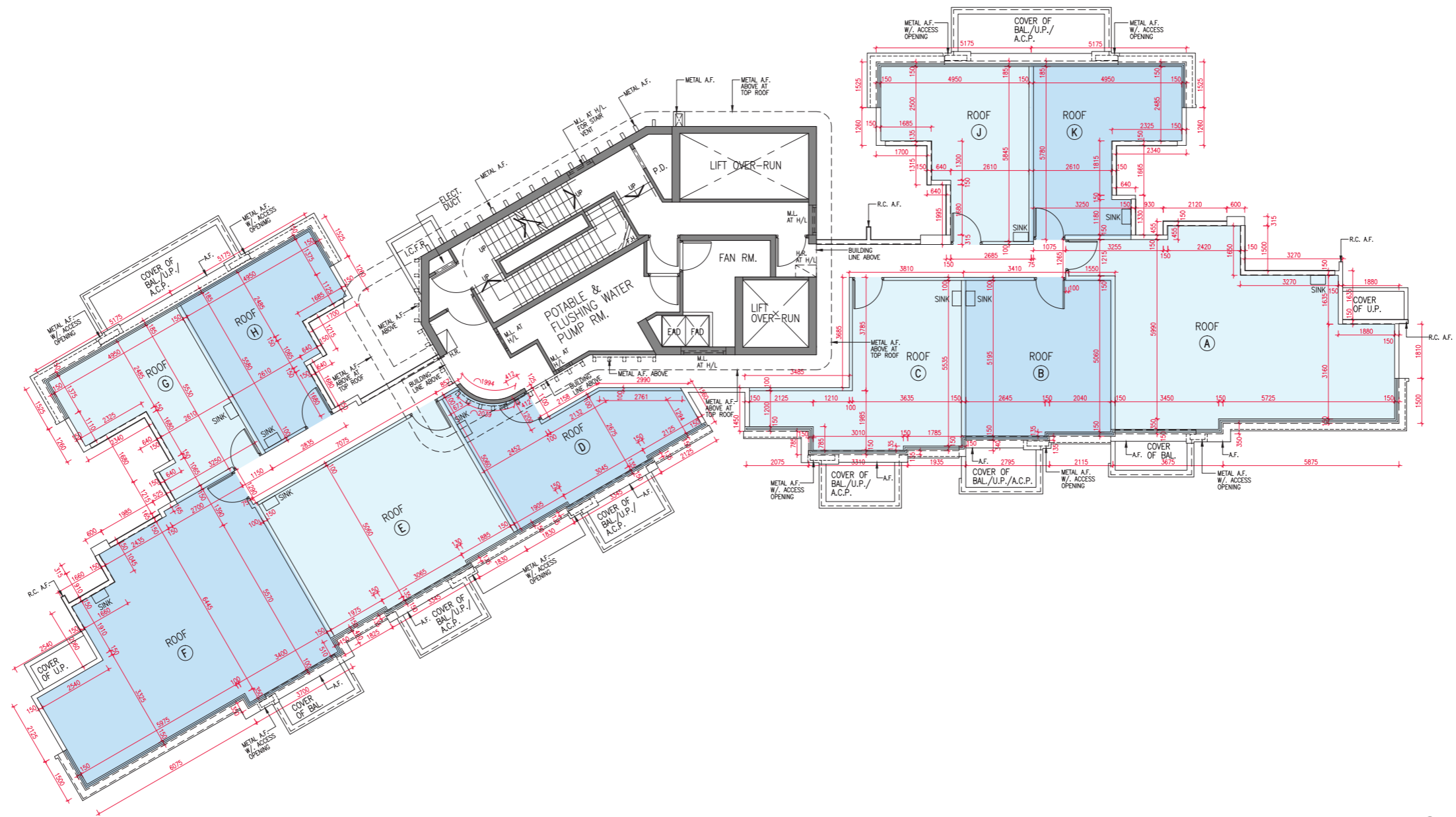
備註：

1. 平面圖所列之數字為以毫米標示之建築結構尺寸。
2. 請參閱本售樓說明書第 23 至 25 頁之圖例及指引以協助解讀此部分的平面圖及其顯示之名稱及簡稱。

TOWER 2
第2座

ROOF
天台

FLOOR PLAN
樓面平面圖



Scale 0 5M/米
比例

Tower 座	Floor 樓層	Unit 單位	The thickness of the floor slabs (excluding plaster) of each residential property (mm) 每個住宅物業的樓板 (不包括灰泥) 的厚度 (毫米)	The floor-to-floor height of each residential property (mm) 每個住宅物業的層與層之間的高度 (毫米)
Tower 2 第2座	Roof 天台	A	Not Applicable 不適用	Not Applicable 不適用
		B		
		C		
		D		
		E		
		F		
		G		
		H		
		J		
		K		

The internal areas of the residential properties on the upper floors will generally be slightly larger than those on the lower floors because of the reducing thickness of the structural walls on the upper floors.

Notes:

1. The dimensions in the floor plan are all structural dimensions in millimeter.
2. Please refer to pages 23 to 25 of this sales brochure for legend of the terms and abbreviations and guidance notes in studying the floor plans of this section.

因住宅物業的較高樓層的結構牆的厚度遞減，較高樓層的內部面積，一般比較低樓層的內部面積稍大。

備註：

1. 平面圖所列之數字為以毫米標示之建築結構尺寸。
2. 請參閱本售樓說明書第 23 至 25 頁之圖例及指引以協助解讀此部分的平面圖及其顯示之名稱及簡稱。