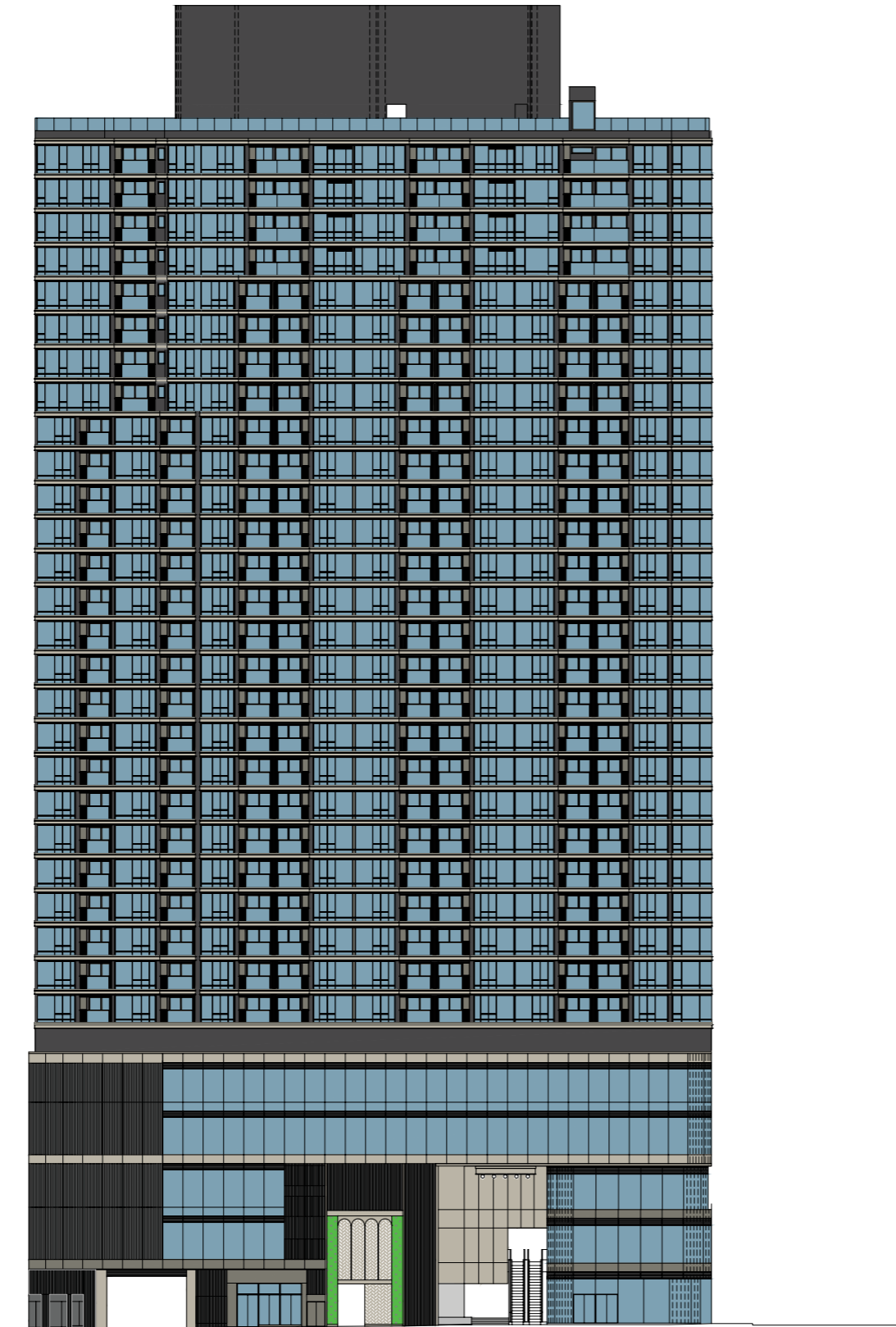
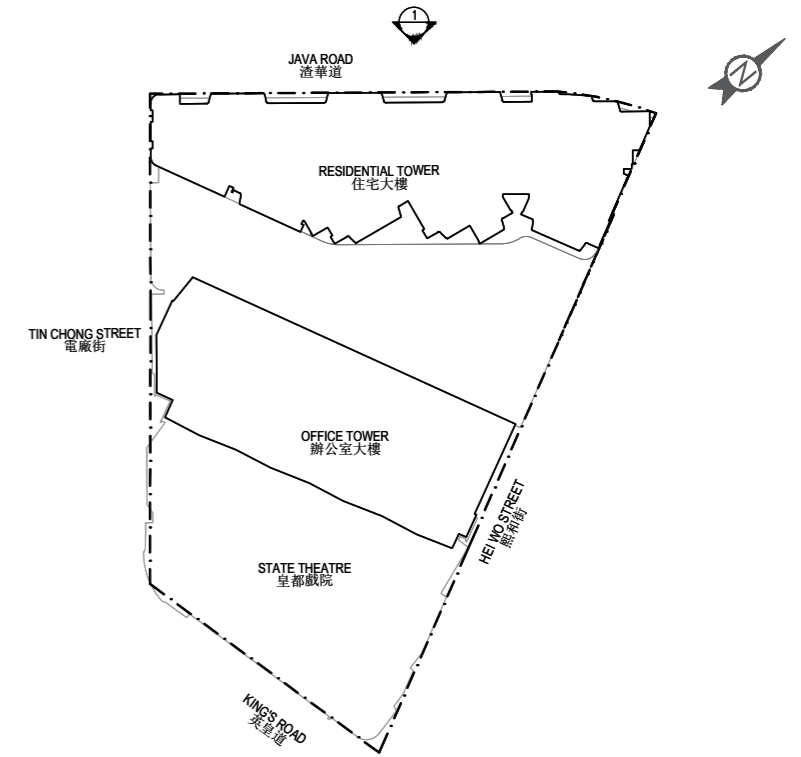


Elevation plan
立面圖



Elevation Plan 1
立面圖 1

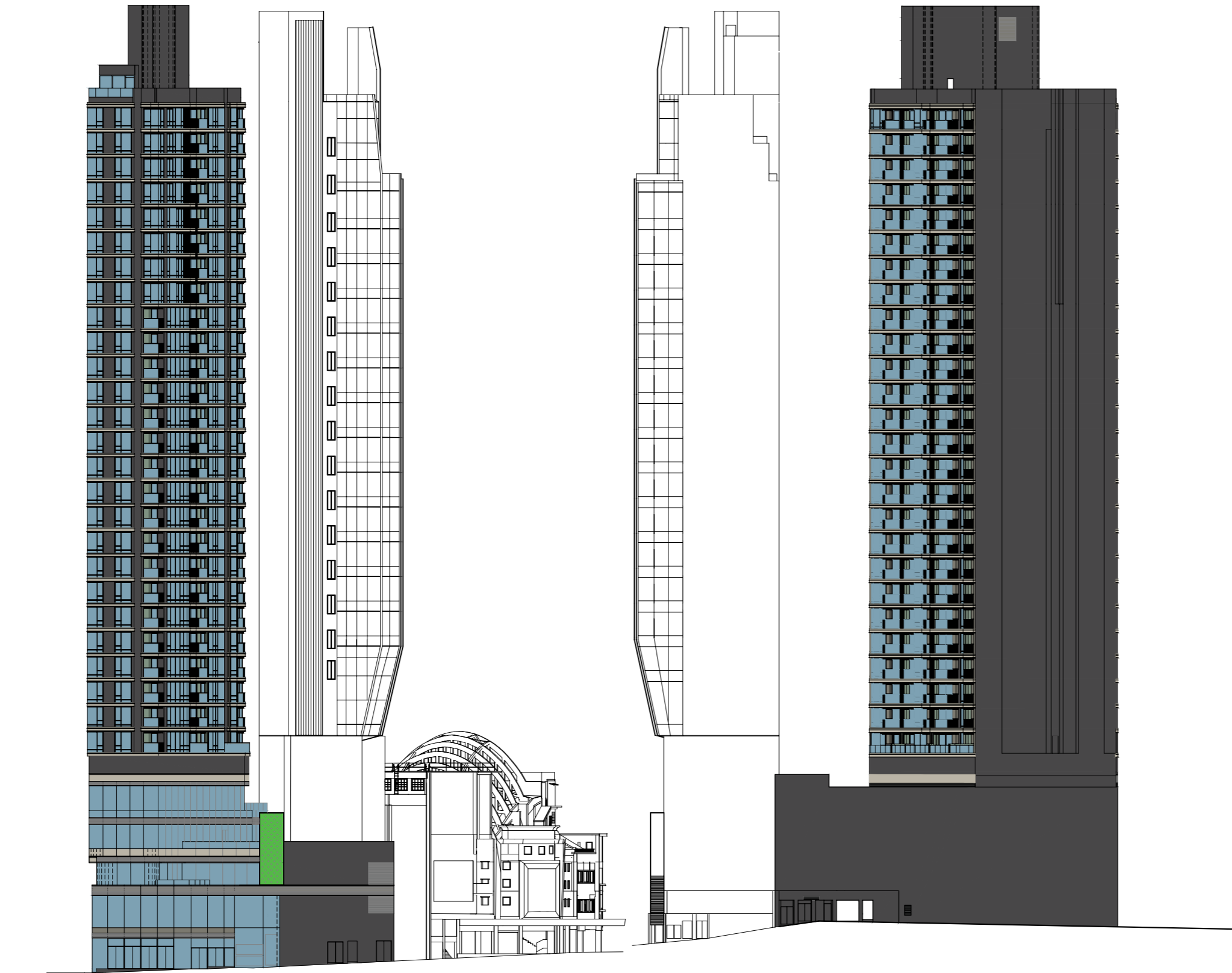
The Authorized Person for the development has certified that the elevations shown on this plan:
1. are prepared on the basis of the approved building plans for the development as of 18 November 2024;
2. are in general accordance with the outward appearance of the development.



Key plan 索引圖

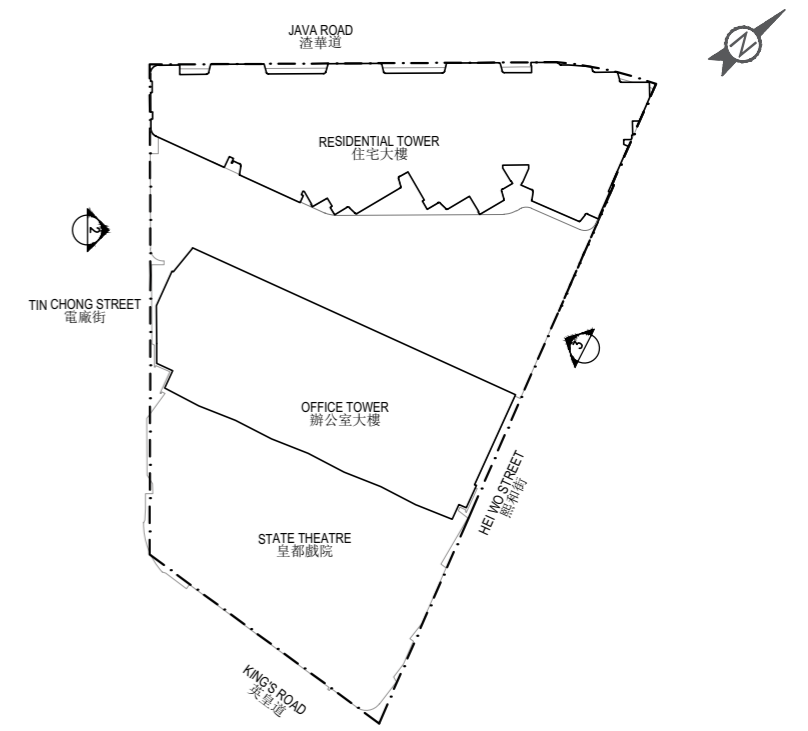
發展項目的認可人士已證明本圖所顯示的立面：
1. 以2024年11月18日的情況為準的發展項目經批准的建築圖則為基礎擬備；
2. 大致上與該發展項目的外觀一致

Elevation plan
立面圖



Elevation Plan 2
立面圖 2

Elevation Plan 3
立面圖 3

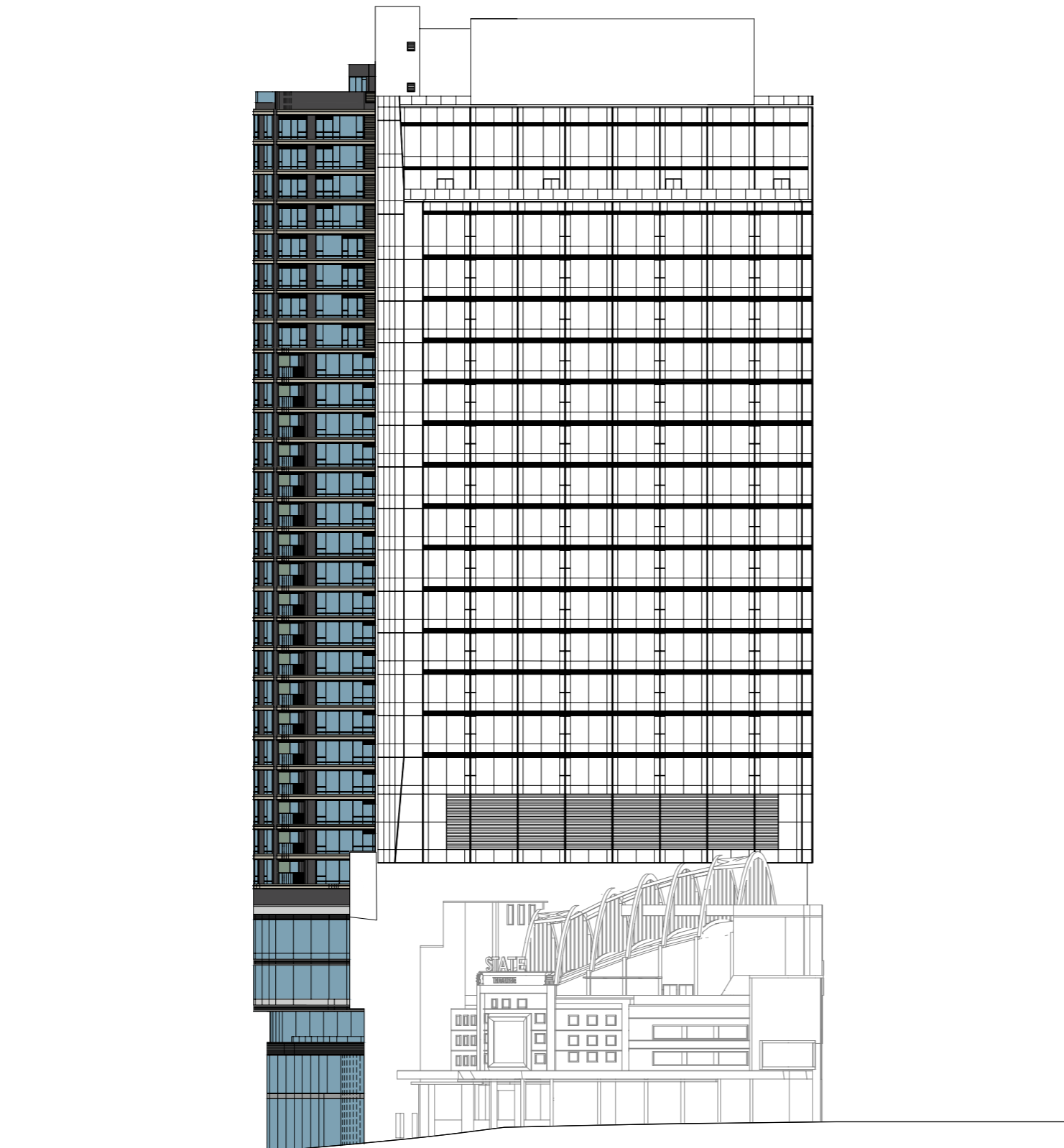


Key plan 索引圖

The Authorized Person for the development has certified that the elevations shown on this plan:
1. are prepared on the basis of the approved building plans for the development as of 18 November 2024;
2. are in general accordance with the outward appearance of the development.

發展項目的認可人士已證明本圖所顯示的立面：
1. 以2024年11月18日的情況為準的發展項目經批准的建築圖則為基礎擬備；
2. 大致上與該發展項目的外觀一致

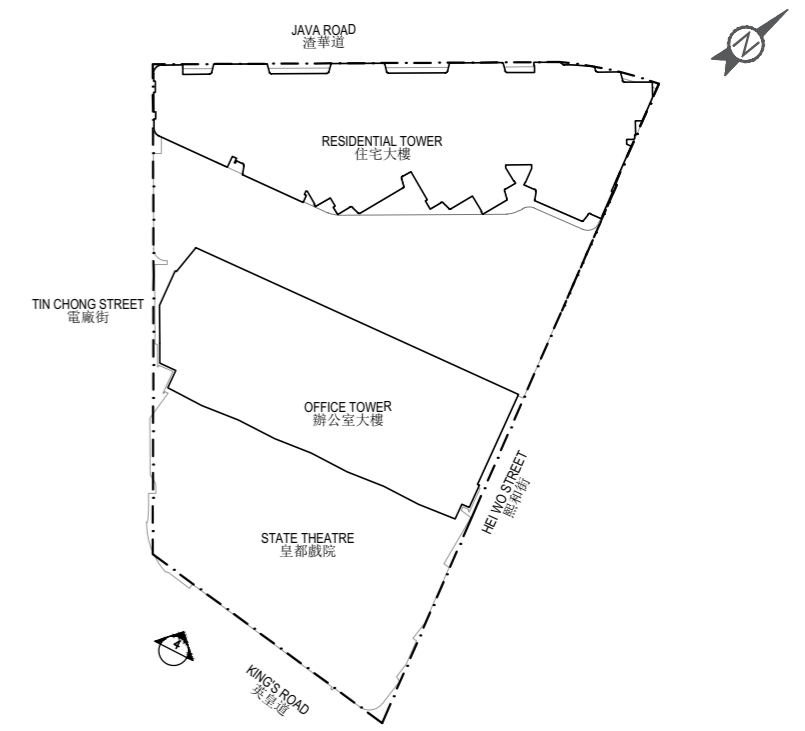
Elevation plan
立面圖



Elevation Plan 4
立面圖 4

The Authorized Person for the development has certified that the elevations shown on this plan:
1. are prepared on the basis of the approved building plans for the development as of 18 November 2024;
2. are in general accordance with the outward appearance of the development.

發展項目的認可人士已證明本圖所顯示的立面：
1. 以2024年11月18日的情況為準的發展項目經批准的建築圖則為基礎擬備；
2. 大致上與該發展項目的外觀一致



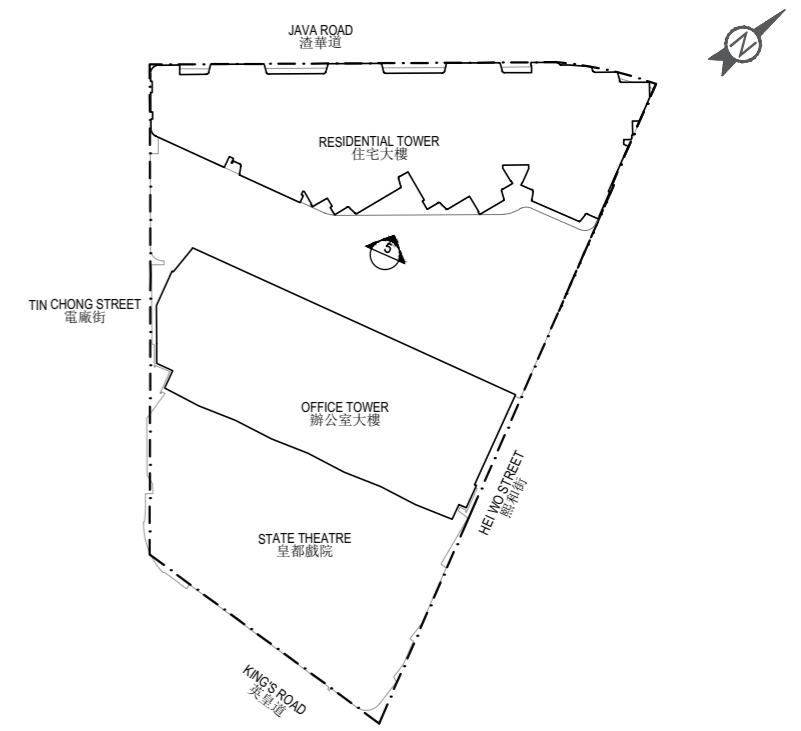
Key plan 索引圖

Elevation plan
立面圖



Elevation Plan 5
立面圖 5

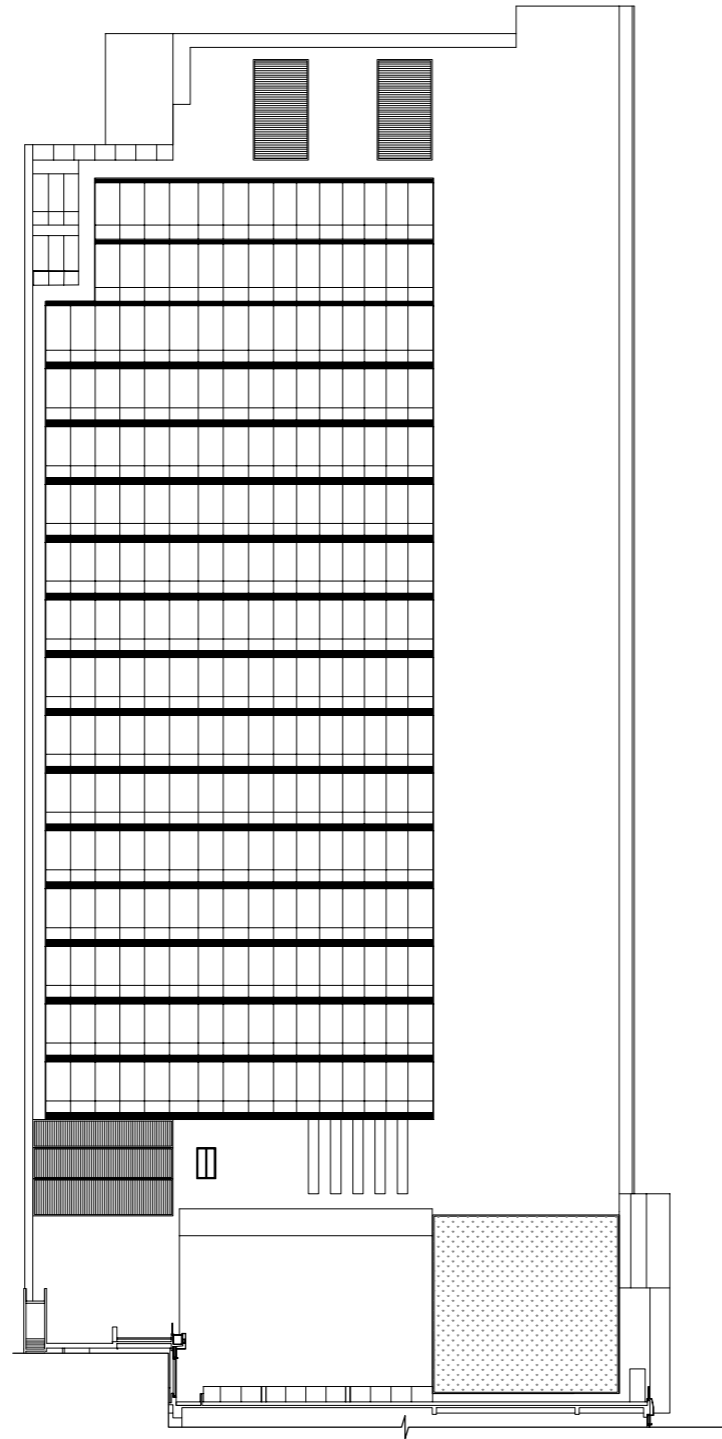
The Authorized Person for the development has certified that the elevations shown on this plan:
1. are prepared on the basis of the approved building plans for the development as of 18 November 2024;
2. are in general accordance with the outward appearance of the development.



Key plan 索引圖

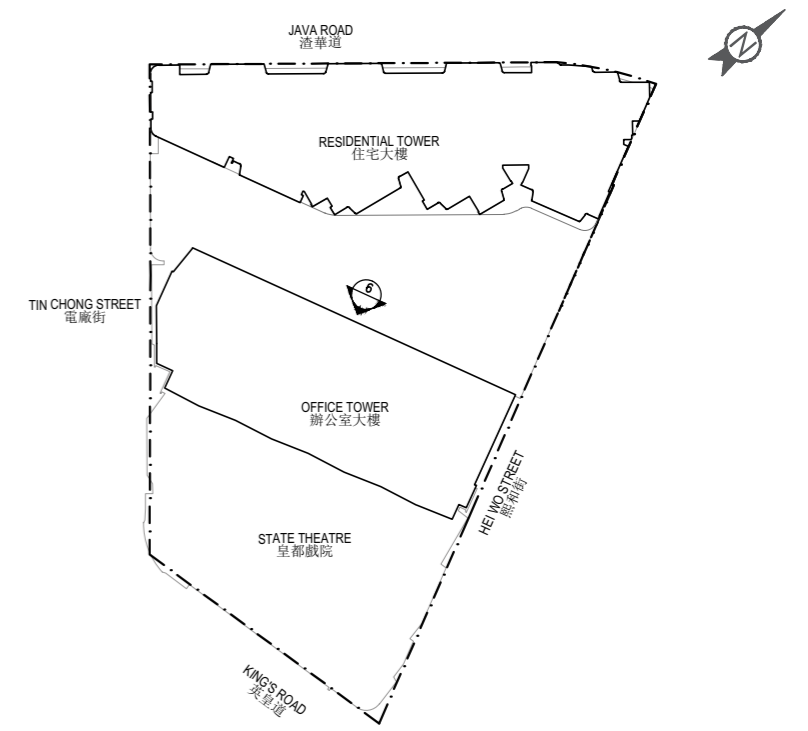
發展項目的認可人士已證明本圖所顯示的立面：
1. 以2024年11月18日的情況為準的發展項目經批准的建築圖則為基礎擬備；
2. 大致上與該發展項目的外觀一致

Elevation plan
立面圖



Elevation Plan 6
立面圖 6

The Authorized Person for the development has certified that the elevations shown on this plan:
1. are prepared on the basis of the approved building plans for the development as of 18 November 2024;
2. are in general accordance with the outward appearance of the development.



Key plan 索引圖

發展項目的認可人士已證明本圖所顯示的立面：
1. 以2024年11月18日的情況為準的發展項目經批准的建築圖則為基礎擬備；
2. 大致上與該發展項目的外觀一致