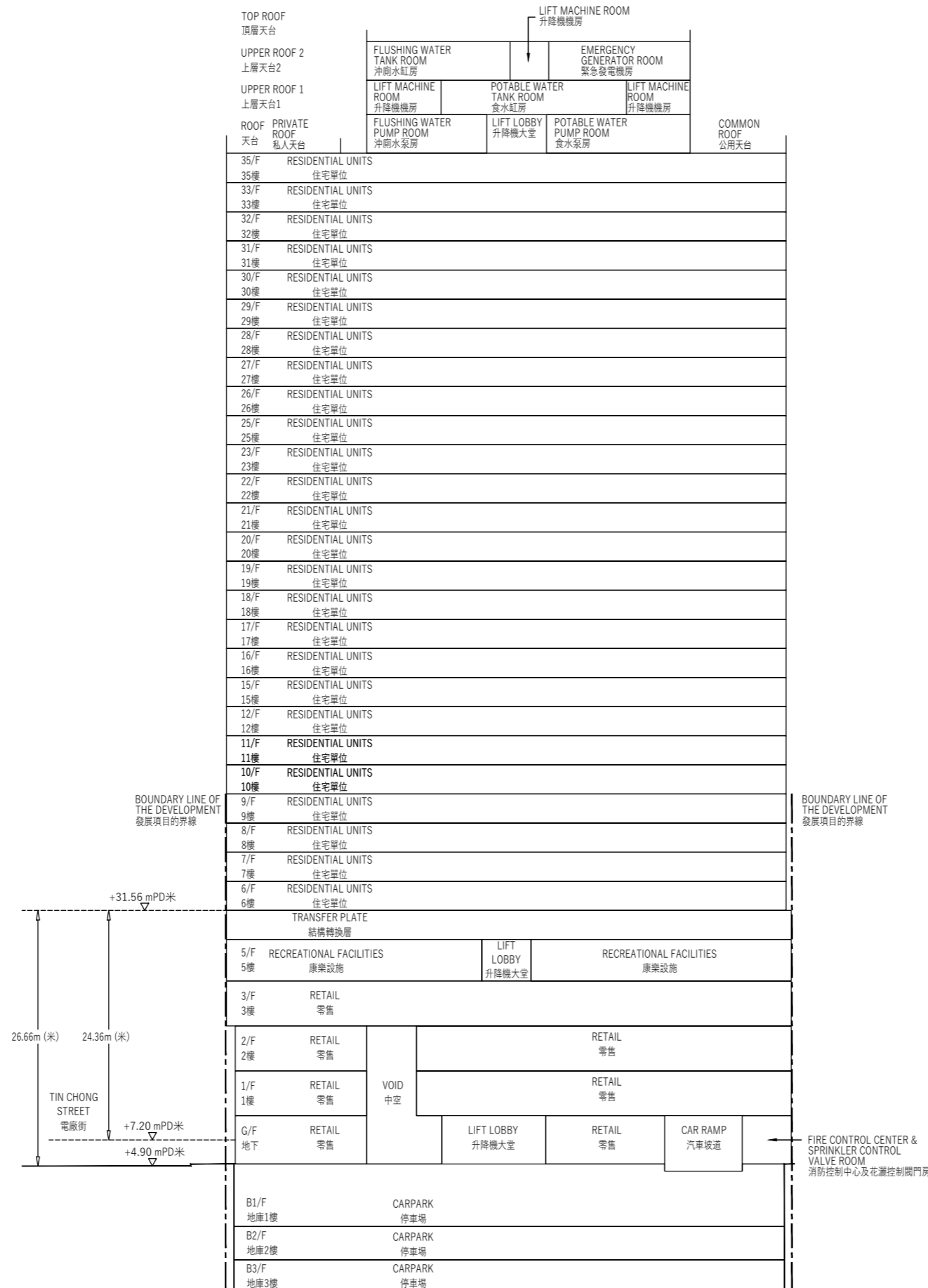
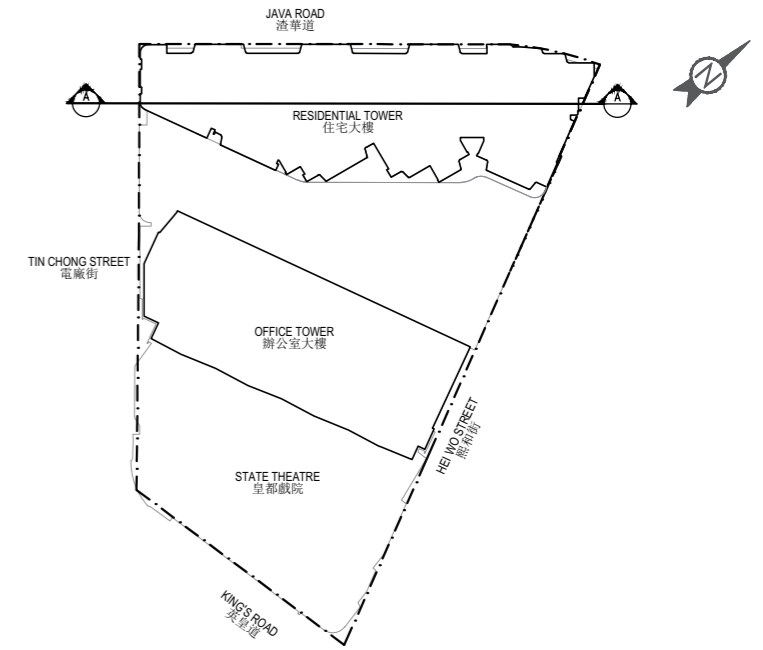


Cross-section plan of building in the development 發展項目中的建築物的橫截面圖

Cross-Section A-A
橫截面圖 A-A



The part of Tin Chong Street adjacent to the building is 4.90 to 7.20 metres above the Hong Kong Principal Datum.
毗連建築物的一段電廠街為香港主水平基準以上4.90至7.20米。



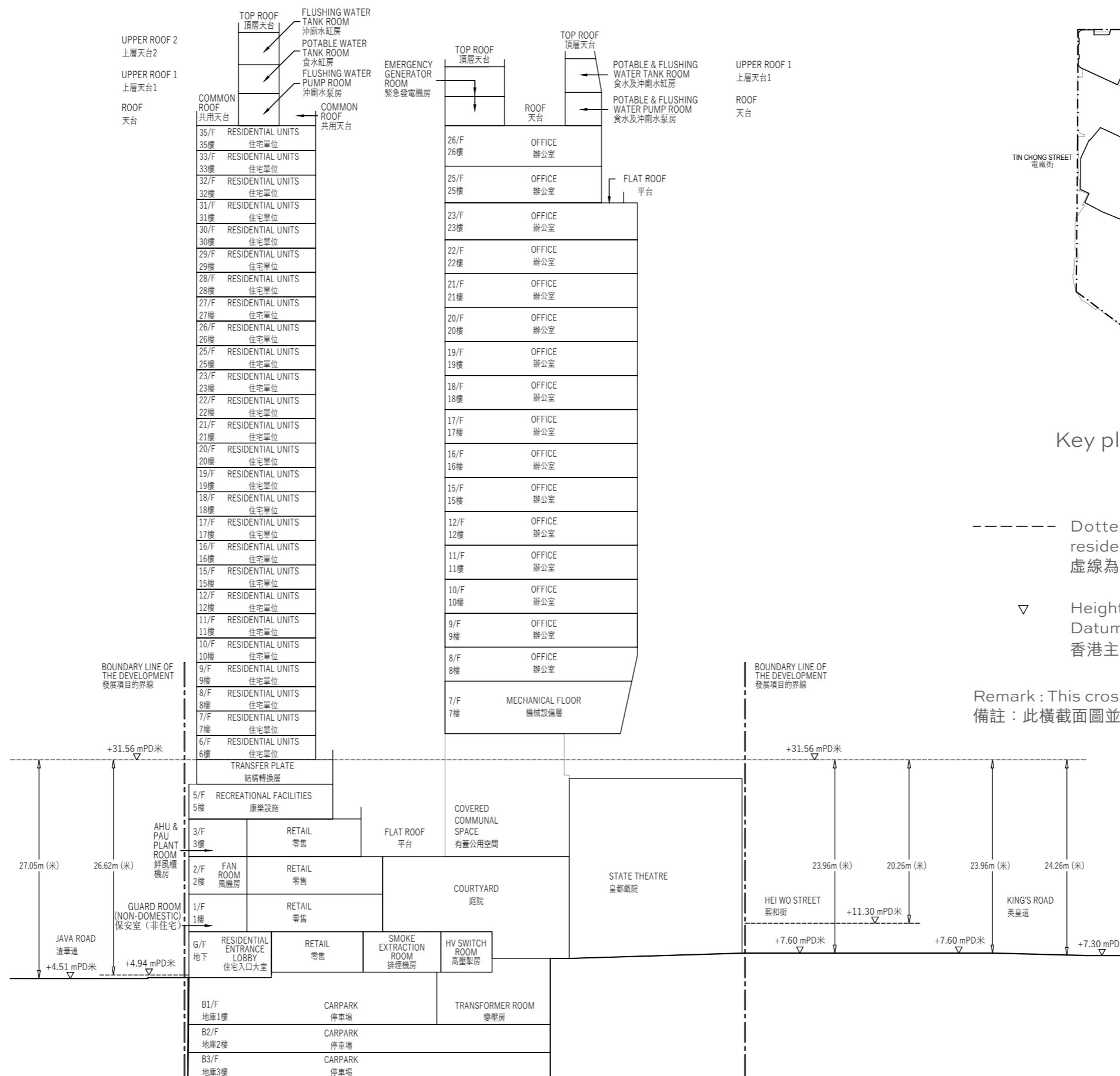
Key plan 索引圖

- Dotted line denotes the level of the lowest residential floor
虛線為最低住宅樓層水平
- ▽ Height in metre above the Hong Kong Principal Datum (PD) (Metre)
香港主水平基準以上高度 (米)

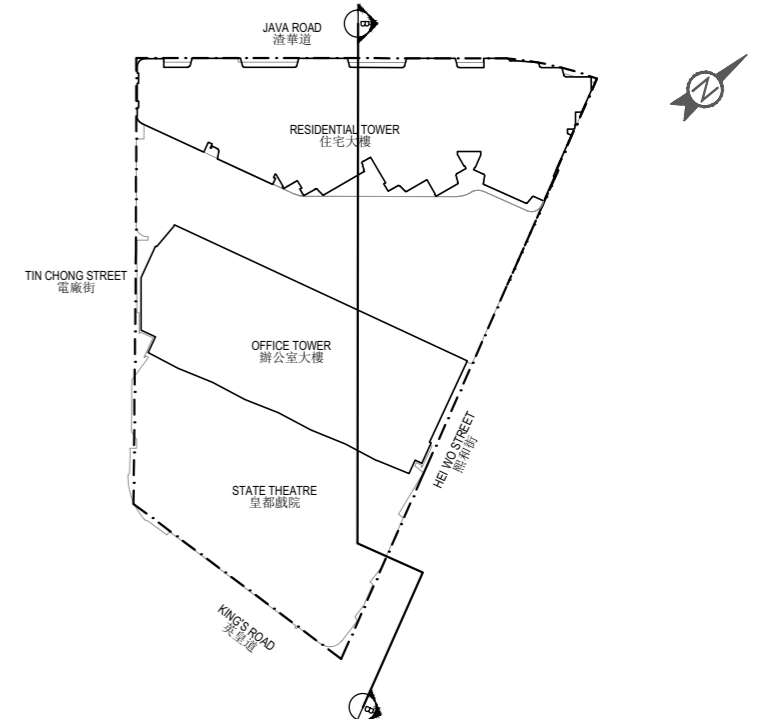
Remark : This cross-section plan is not drawn to scale
備註：此橫截面圖並非按照比例繪畫

Cross-section plan of building in the development 發展項目中的建築物的橫截面圖

Cross-Section B-B
橫截面圖 B-B



The part of Java Road adjacent to the building is 4.51 to 4.94 metres above the Hong Kong Principal Datum.
毗連建築物的一段渣華道為香港主水平基準以上4.51至4.94米。



Key plan 索引圖

- Dotted line denotes the level of the lowest residential floor
虛線為最低住宅樓層水平
- ▽ Height in metre above the Hong Kong Principal Datum (PD) (Metre)
香港主水平基準以上高度 (米)

Remark : This cross-section plan is not drawn to scale
備註：此橫截面圖並非按照比例繪畫

The part of Hei Wo Street adjacent to the building is 7.60 to 11.30 metres above the Hong Kong Principal Datum.

毗連建築物的一段熙和街為香港主水平基準以上7.60至11.30米。

The part of King's Road adjacent to the building is 7.30 to 7.60 metres above the Hong Kong Principal Datum.

毗連建築物的一段英皇道為香港主水平基準以上7.30至7.60米。